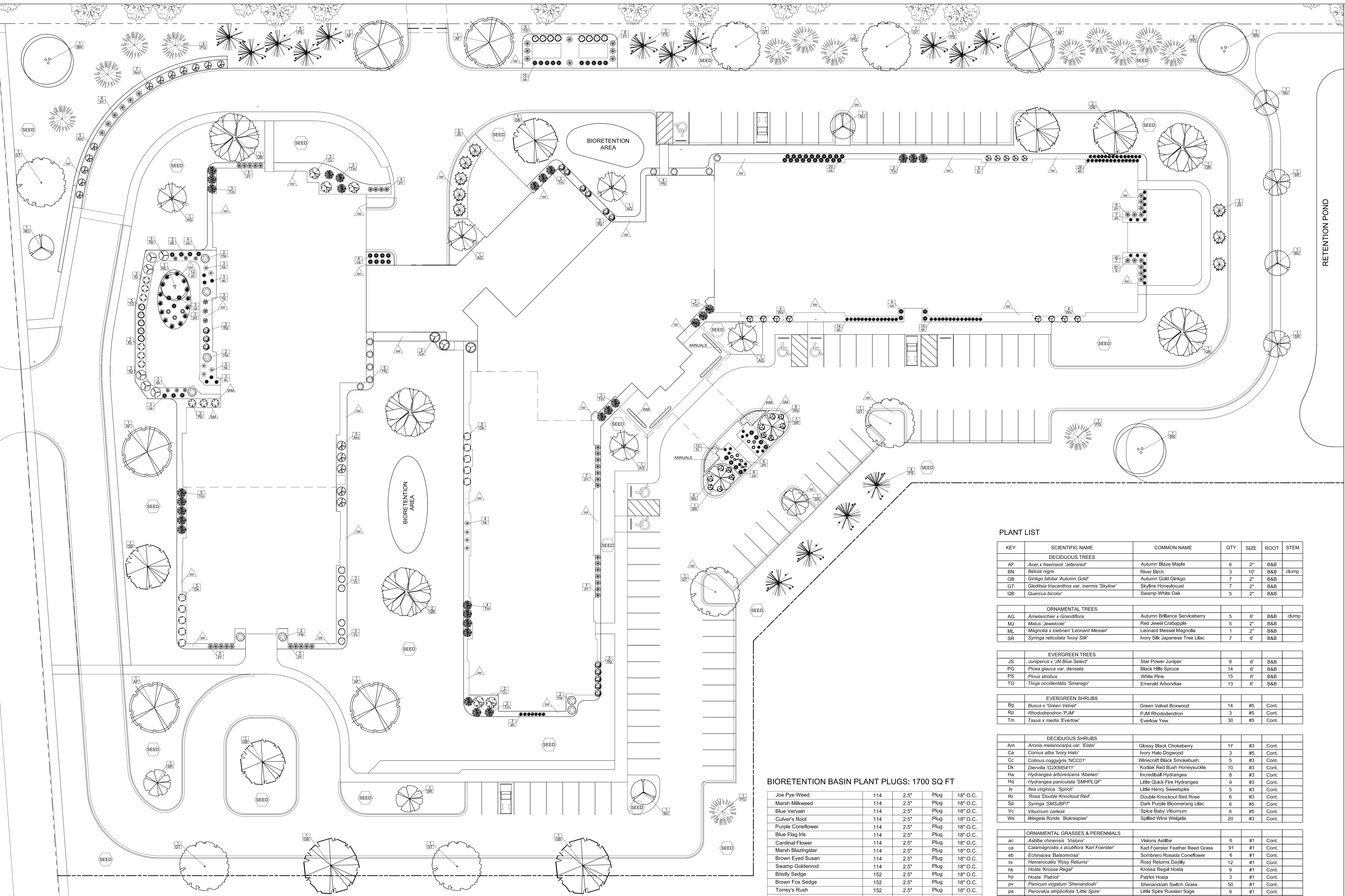


TUKKA PROPERTIES - WAUKESHA SENIOR LIVING
Summit Avenue
Waukesha, Wisconsin



LANDSCAPE NOTES:

- Please refer to Grading & Erosion Control Plan for final contour information.
- Individual tree and shrub groupings in lawn areas to receive wood mulch rings with shovel cut edge.
- Vinyl edge is Dimex EdgePro polyvinyl edging or equivalent

- 1.5" washed stone (local quarry in buff or gray colors) with professional poly vinyl edging
- Brown Dyed Wood Mulch / Shovel cut edge
- Premium sunny seed blend with straw mat. (Class 1 Type B single net)

BIORETENTION BASIN PLANT PLUGS: 1700 SQ FT

Joe Pye Weed	114	2.5"	Plug	18" O.C.
Marsh Milkweed	114	2.5"	Plug	18" O.C.
Blue Vervain	114	2.5"	Plug	18" O.C.
Culver's Root	114	2.5"	Plug	18" O.C.
Purple Coneflower	114	2.5"	Plug	18" O.C.
Blue Flag Iris	114	2.5"	Plug	18" O.C.
Cardinal Flower	114	2.5"	Plug	18" O.C.
Marsh Blazingstar	114	2.5"	Plug	18" O.C.
Brown Eyed Susan	114	2.5"	Plug	18" O.C.
Swamp Goldenrod	114	2.5"	Plug	18" O.C.
Bristly Sedge	152	2.5"	Plug	18" O.C.
Brown Fox Sedge	152	2.5"	Plug	18" O.C.
Torrey's Rush	152	2.5"	Plug	18" O.C.
Switch Grass	114	2.5"	Plug	18" O.C.

BASIN NOTES:

- See SITE DETAILS for Infiltration Basin and Bio-Retention Basin information
- place Coconut Fabric on Bio Basins and install native plant plugs 18" on center

PLANT LIST

KEY	SCIENTIFIC NAME	COMMON NAME	QTY	SIZE	ROOT	STEM
DECIDUOUS TREES						
AF	<i>Acer x freemanii 'Jelferseed'</i>	Autumn Blaze Maple	6	2"	B&B	clump
BN	<i>Betula nigra</i>	River Birch	3	10"	B&B	clump
GB	<i>Ginkgo biloba 'Autumn Gold'</i>	Autumn Gold Ginkgo	7	2"	B&B	
GT	<i>Gleditsia tricanthos var. inermis 'Skyline'</i>	Skyline Honeylocust	7	2"	B&B	
OB	<i>Quercus bicolor</i>	Swamp White Oak	5	2"	B&B	
ORNAMENTAL TREES						
AG	<i>Amelanchier x Grandiflora</i>	Autumn Brilliance Serviceberry	5	6"	B&B	clump
MJ	<i>Malus 'Jewelcole'</i>	Red Jewel Crabapple	5	2"	B&B	
ML	<i>Magnolia x leobneri 'Leonard Messel'</i>	Leonard Messel Magnolia	1	2"	B&B	
SR	<i>Syringa reticulata 'Ivory Silk'</i>	Ivory Silk Japanese Tree Lilac	7	6"	B&B	
EVERGREEN TREES						
JS	<i>Juniperus x 'JN Blue Select'</i>	Star Power Juniper	8	6"	B&B	
PG	<i>Picea glauca var. densata</i>	Black Hills Spruce	14	6"	B&B	
PS	<i>Pinus strobus</i>	White Pine	15	6"	B&B	
TO	<i>Thuja occidentalis 'Smarago'</i>	Emerald Arborvitae	13	6"	B&B	
EVERGREEN SHRUBS						
Bg	<i>Buxus x 'Green Velvet'</i>	Green Velvet Boxwood	14	#5	Cont.	
Rp	<i>Rhododendron 'PJM'</i>	PJM Rhododendron	3	#5	Cont.	
Tm	<i>Taxus x media 'Everlow'</i>	Everlow Yew	30	#5	Cont.	
DECIDUOUS SHRUBS						
Am	<i>Aronia melanocarpa var. 'Eliota'</i>	Glossy Black Chokeberry	17	#3	Cont.	
Ca	<i>Cornus alba 'Ivory Halo'</i>	Ivory Halo Dogwood	3	#5	Cont.	
Cc	<i>Cotinus coggygria 'NCC01'</i>	Winecraft Black Smokebush	5	#3	Cont.	
Dk	<i>Diervilla 'G2X885411'</i>	Kodiak Red Bush Honeysuckle	10	#3	Cont.	
Ha	<i>Hydrangea arborescens 'Abelwo'</i>	Incredible! Hydrangea	8	#3	Cont.	
Hq	<i>Hydrangea paniculata 'SMHPLQP'</i>	Little Quick Fire Hydrangea	9	#3	Cont.	
Iv	<i>Itea virginica 'Sprich'</i>	Little Henry Sweetspire	5	#3	Cont.	
Rr	<i>Rosa 'Double Knockout Red'</i>	Double Knockout Red Rose	6	#3	Cont.	
Sp	<i>Syringa 'SMSJBPP'</i>	Dark Purple Bloomerang Lilac	6	#5	Cont.	
Vc	<i>Viburnum carnaib</i>	Spike Baby Viburnum	6	#5	Cont.	
Ws	<i>Weigela florida 'Bokraspiw'</i>	Spilled Wine Weigela	20	#3	Cont.	
ORNAMENTAL GRASSES & PERENNIALS						
ac	<i>Astilbe chinensis 'Visions'</i>	Visions Astilbe	6	#1	Cont.	
ca	<i>Calamagrostis x acutiflora 'Karl Foerster'</i>	Karl Foerster Feather Reed Grass	91	#1	Cont.	
eb	<i>Echinacea 'Balsomrosa'</i>	Sombrero Rosada Coneflower	6	#1	Cont.	
hr	<i>Hemerocallis 'Rosy Returns'</i>	Rosy Returns Daylily	12	#1	Cont.	
hk	<i>Hosta 'Krossa Regal'</i>	Krossa Regal Hosta	9	#1	Cont.	
hp	<i>Hosta 'Patriot'</i>	Patriot Hosta	3	#1	Cont.	
pr	<i>Panicum virgatum 'Shenandoah'</i>	Shenandoah Switch Grass	50	#1	Cont.	
pa	<i>Perovskia atriplicifolia 'Little Spire'</i>	Little Spire Russian Sage	9	#1	Cont.	
sh	<i>Sporobolus heterolepis</i>	Prairie Dropseed	63	#1	Cont.	

Date: 2024.01.25
Scale: 1"=20'-0"
Designer: BF / KS

Seal:
To protect against legal liability,
the plans presented herein are
"schematic," and should not be
outsourced as "biddable" or
"construction documents" unless
approved by the Landscape
Designer. This is not an original
document unless stamped in
red, as ORIGINAL.

Revisions:
2024.11.18

L101

Reference Name:
ICONICA