

PROJECT INFORMATION

PHC WMH -
CENTRAL UTILITY
PLANT
725 AMERICAN
AVENUE,
WAUKESHA, WI
53188

ISSUANCE AND REVISIONS
CONSTRUCTION DOCUMENTS
BID PACKAGE 1 - SITEWORK,
FOOTINGS & FOUNDATIONS
DATE DESCRIPTION

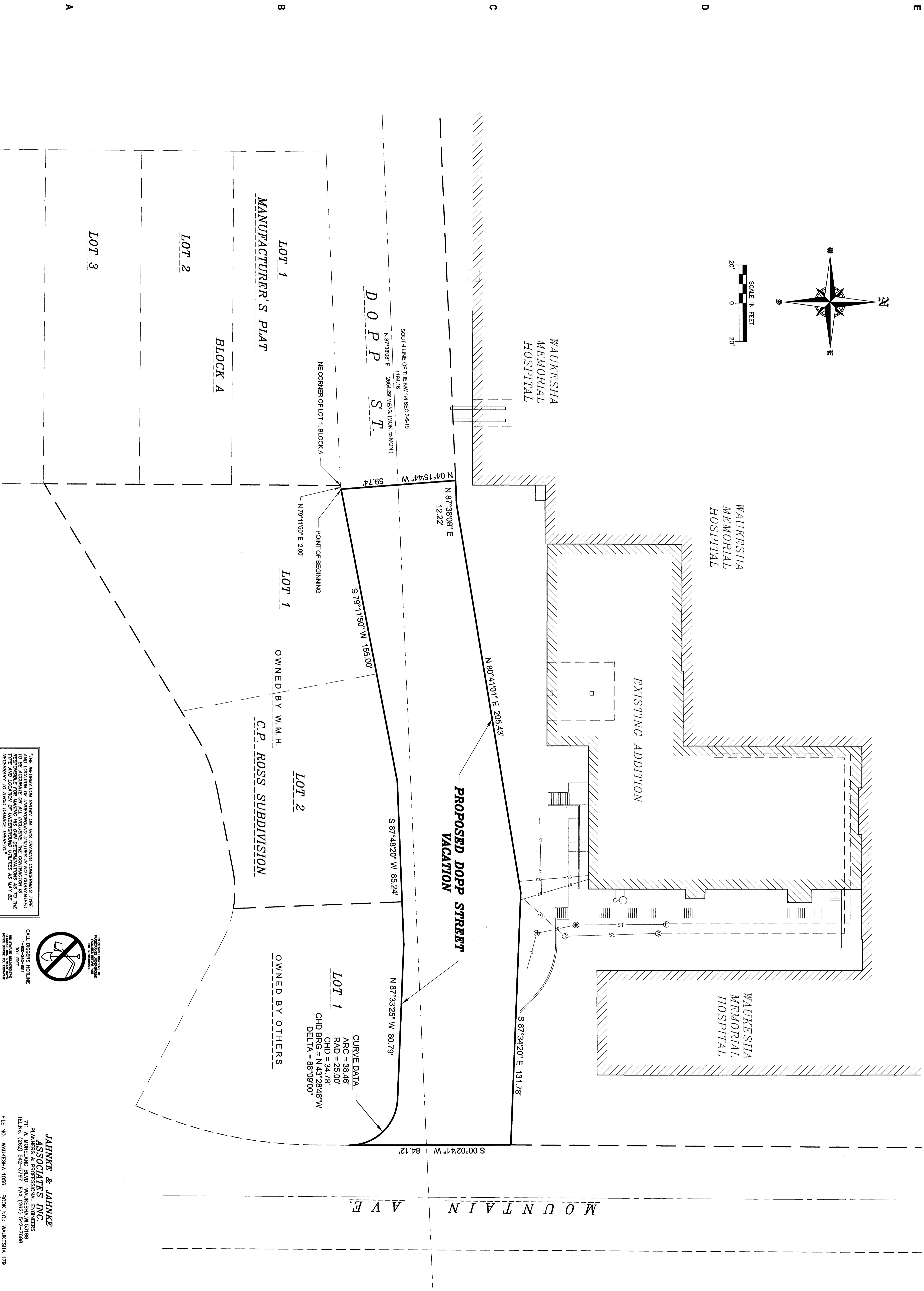
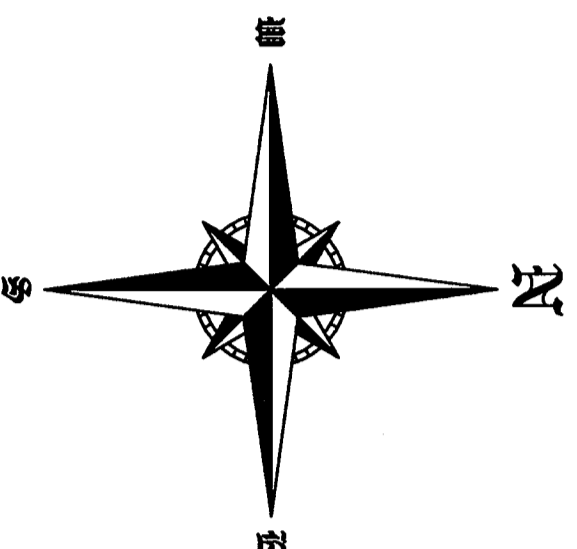
KEY PLAN

SHEET INFORMATION

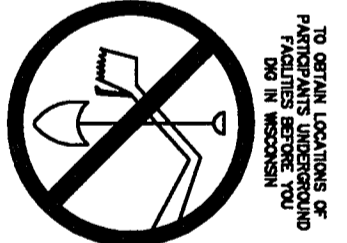
PROJECT MANAGER RK
PROJECT NUMBER 413059
DATE NOVEMBER 20, 2015

PLAT OF SURVEY

C100



THE INFORMATION SHOWN ON THIS DRAWING CONCERNING TYPE AND LOCATION OF INTERFERING UTILITIES IS NOT GUARANTEED. THE USER OF THIS DRAWING SHALL BE RESPONSIBLE FOR MAKING HIS OWN DETERMINATIONS AS TO THE NECESSITY TO AVOID DAMAGE THERE TO.



JAHNKE & JAHNKE
ASSOCIATES INC.
PLANNERS & PROFESSIONAL ENGINEERS
711 W. ARDEN AVE. 5TH FLOOR - MADISON, WI 53706
TEL: 608.782.5191 FAX: (608) 782.7988
FILE NAME: S:\projects\071323\04\2015 SE CHILLER.dwg
SCALE 1" = 20'