

GENERAL NOTES

1. REFER TO THE EXISTING CONDITIONS SURVEY FOR EXISTING CONDITIONS NOTES AND LEGEND.
2. ALL WORK IN THE ROW SHALL BE IN ACCORDANCE WITH THE MUNICIPAL STANDARD SPECIFICATIONS FOR PUBLIC WORKS CONSTRUCTION.
3. JSD SHALL BE HELD HARMLESS AND DOES NOT WARRANT ANY DEVIATIONS BY THE OWNER/CONTRACTOR FROM THE APPROVED CONSTRUCTION PLANS THAT MAY RESULT IN DISCIPLINARY ACTIONS BY ANY OR ALL REGULATORY AGENCIES.
4. DRAWING FOR REVIEW - NOT FOR CONSTRUCTION UNLESS OTHERWISE NOTED IN THE TITLE BLOCK.
5. THE LANDSCAPE CONTRACTOR SHALL COORDINATE ALL FINE GRADING AND TOPSOILING WITH GENERAL CONTRACTOR
6. REFER TO "LANDSCAPE DETAILS AND NOTES" SHEET FOR ADDITIONAL DETAILS, NOTES AND SPECIFICATION INFORMATION INCLUDING MATERIALS, GUARANTEE AND EXECUTION RELATED TO LANDSCAPE PLAN
7. CONTRACTOR SHALL REVIEW SITE CONDITIONS FOR UTILITY CONFLICTS, DRAINAGE ISSUES, SUBSURFACE ROCK, AND PLANT PLACEMENT CONFLICTS PRIOR TO PLANT INSTALLATION. REPORT ANY CONDITIONS THAT MAY HAVE ADVERSE IMPACT ON PLANTING OPERATIONS TO LANDSCAPE ARCHITECT
8. DO NOT COMMENCE PLANTING OPERATIONS UNTIL ALL ADJACENT SITE IMPROVEMENTS, IRRIGATION INSTALLATION (IF APPLICABLE), AND FINISH GRADING ARE COMPLETE

PLANT LIST

EVERGREEN TREE	CODE	BOTANICAL / COMMON NAME
PIGL		<i>Picea glauca</i> / White Spruce
ORNAMENTAL TREES	CODE	BOTANICAL / COMMON NAME
CACA		<i>Carpinus caroliniana</i> "J.M. Globe" TM / Ball O' Fire American Hornbeam
CECA		<i>Cercis canadensis</i> "Columbus" / Columbus Strain Eastern Redbud
OVERSTORY DECIDUOUS TREES	CODE	BOTANICAL / COMMON NAME
ACFR		<i>Acer x freemanii</i> "Marmo" / Marmo Freeman Maple
GIBI		<i>Ginkgo biloba</i> "Autumn Gold" TM / Autumn Gold Maidenhair Tree
DECIDUOUS SHRUBS	CODE	BOTANICAL / COMMON NAME
COSE		<i>Cornus sericea</i> "Farrow" / Arctic Fire® Red Twig Dogwood
FOIN		<i>Forsythia x intermedia</i> "Minda" / Show Off® Forsythia
SPJA		<i>Spiraea japonica</i> "SMNSJMFR" TM / Double Play Red Spiraea
SYPA		<i>Syringa x "SMNJRP"</i> TM / Blooming Dwarf Pink Lilac
EVERGREEN SHRUBS	CODE	BOTANICAL / COMMON NAME
JUCHK		<i>Juniperus chinensis</i> "Pflizerana Kallays Compacta" / Kally Pflizer Compact Juniper
JUCH		<i>Juniperus chinensis</i> "Sea Green" / Sea Green Juniper
TAMEG		<i>Taxus x media</i> "Dark Green" / Dark Green Yew
TAMEE		<i>Taxus x media</i> "Everlow" / Everlow Yew
PERENNIALS & GRASSES	CODE	BOTANICAL / COMMON NAME
ALMO		<i>Alchemilla mollis</i> / Lady's Mantle
ALSU		<i>Allium x "Summer Beauty"</i> / Summer Beauty Allium
ECPA		<i>Echinacea pallida</i> / Pale Purple Coneflower
LISP		<i>Liatris spicata</i> "Kabold" / Kabold Spike Gayfeather
PAVI		<i>Panicum virgatum</i> "Shenadoah" / Shenadoah Switch Grass
RUFU		<i>Rudbeckia fulgida sultivantii</i> "Goldsturm" / Goldsturm Coneflower
SPHE		<i>Sporobolus heterolepis</i> / Prairie Dropseed

WISCONSIN
 KEVIN C. BYRNE
 LA-552
 MILWAUKEE
 11/14/2022



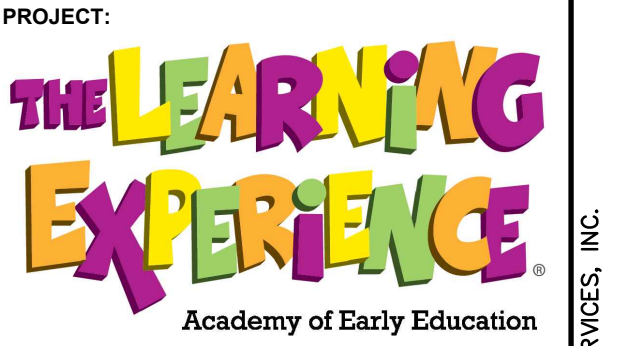
CREATE THE VISION TELL THE STORY

jsdinc.com

MILWAUKEE REGIONAL OFFICE
 W238 N1610 BUSSE ROAD, SUITE 100
 WAUKESHA, WISCONSIN 53188
 P. 262.513.0666



Building from Experience
 CLIENT ADDRESS:
 106 BARRINGTON COMMONS CT.
 SUITE 726
 BARRINGTON, IL 60010



PROJECT LOCATION:
 CITY OF WAUKESHA
 WAUKESHA COUNTY
 WISCONSIN

PLAN MODIFICATIONS:

#	Date:	Description:
1	11.14.2022	CITY COMMENTS
2		
3		
4		
5		
6		
7		
8		
9		
10		
11		
12		
13		
14		
15		

Designed By: MWS 10.05.2022
 Reviewed By: KB 10.05.2022
 Approved By: RIZ 10.05.2022

SHEET TITLE:
LANDSCAPE PLAN

SHEET NUMBER:
L-1.0

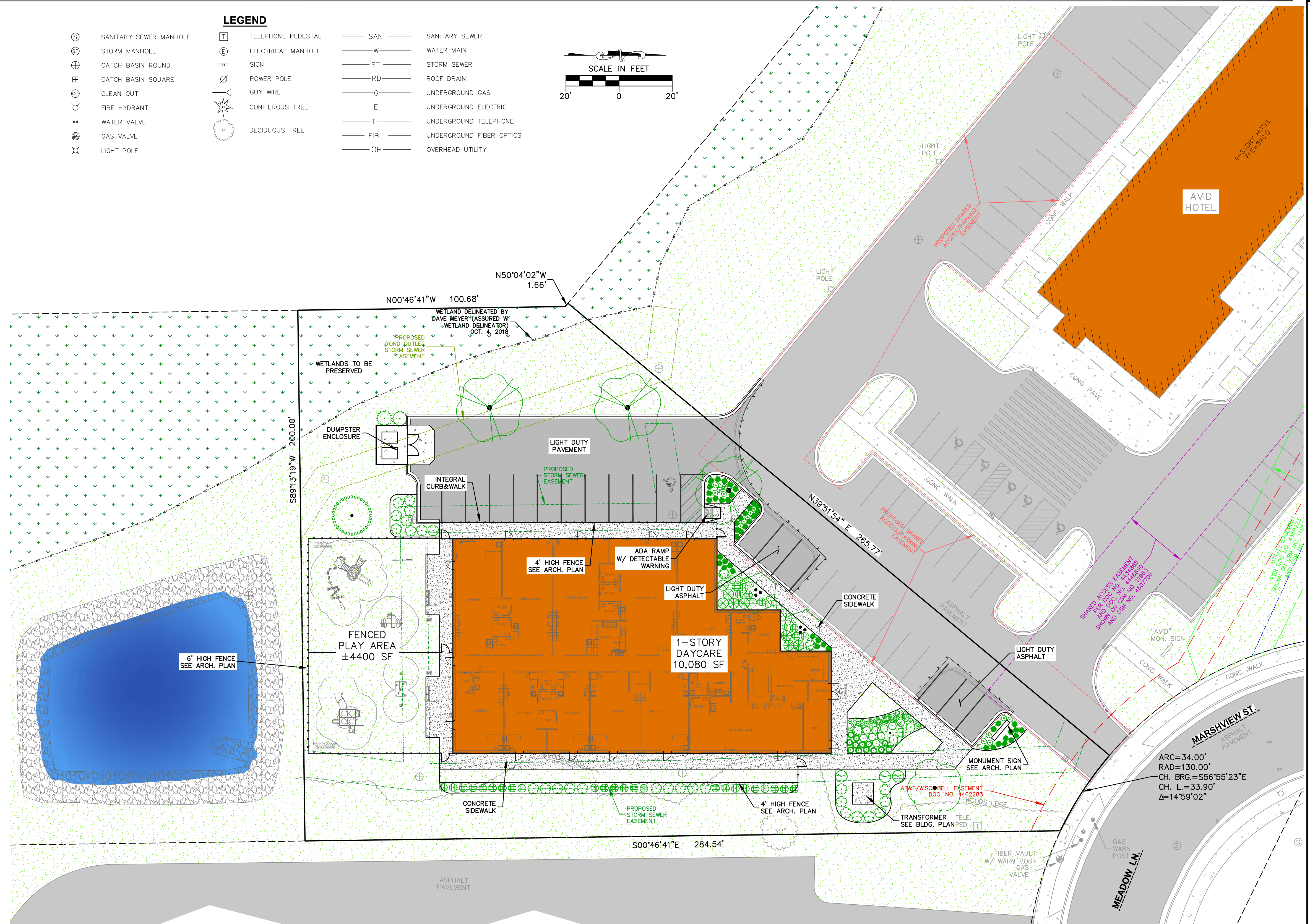
JSD PROJECT NO: 22-11335

File: R:\2022\2211335\DWG\22-11335 LANDSCAPE.dwg Layout: L1.0 User: amanda Plotted: Nov 14, 2022 2:46pm Xref's:

SCALE IN FEET
 10' 0 10'

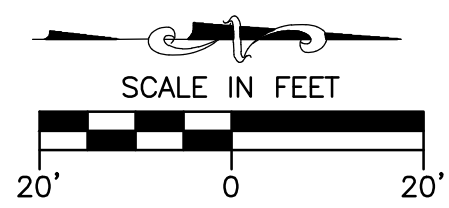
THESE PLANS AND DESIGNS ARE COPYRIGHT PROTECTED AND MAY NOT BE USED IN WHOLE OR IN PART WITHOUT THE WRITTEN CONSENT OF JSD PROFESSIONAL SERVICES, INC.


File: R:\2022\211335\DWG\211335.L1.1 Colored Landscape Plan.dwg Layout: L1.1 User: amrcz Plotter: Nov 14, 2022 - 4:08pm Xref's:



LEGEND

⊙	SANITARY SEWER MANHOLE	⊕	TELEPHONE PEDESTAL	— SAN —	SANITARY SEWER
⊕	STORM MANHOLE	⊖	ELECTRICAL MANHOLE	— W —	WATER MAIN
⊗	CATCH BASIN ROUND	⊕	SIGN	— ST —	STORM SEWER
⊗	CATCH BASIN SQUARE	⊕	POWER POLE	— RD —	ROOF DRAIN
⊗	CLEAN OUT	⊕	GUY WIRE	— G —	UNDERGROUND GAS
⊕	FIRE HYDRANT	⊕	CONIFEROUS TREE	— E —	UNDERGROUND ELECTRIC
⊕	WATER VALVE	⊕	DECIDUOUS TREE	— T —	UNDERGROUND TELEPHONE
⊕	GAS VALVE			— FIB —	UNDERGROUND FIBER OPTICS
⊕	LIGHT POLE			— OH —	OVERHEAD UTILITY






CREATE THE VISION TELL THE STORY

jsdinc.com

MILWAUKEE REGIONAL OFFICE
W238 N1610 BUSSE ROAD, SUITE 100
WAUKESHA, WISCONSIN 53188
P. 262.513.0666

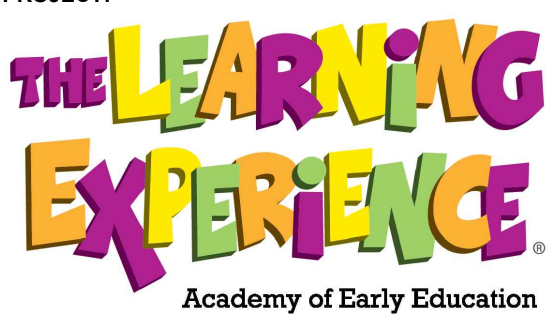
CLIENT:



Building from Experience

CLIENT ADDRESS:
106 BARRINGTON COMMONS CT.
SUITE 726
BARRINGTON, IL 60010

PROJECT:



PROJECT LOCATION:
CITY OF WAUKESHA
WAUKESHA COUNTY
WISCONSIN

PLAN MODIFICATIONS:	
#	Description:
1	11.14.2022 CITY COMMENTS
2	
3	
4	
5	
6	
7	
8	
9	
10	
11	
12	
13	
14	
15	

Designed By: APM 10.05.2022

Reviewed By: RWI 10.05.2022

Approved By: RWI 10.05.2022

SHEET TITLE:
COLORED LANDSCAPE PLAN

SHEET NUMBER:
L-1.1

JSD PROJECT NO: 22-11335


 11/14/2022

THESE PLANS AND DESIGNS ARE COPYRIGHT PROTECTED AND MAY NOT BE USED IN WHOLE OR IN PART WITHOUT THE WRITTEN CONSENT OF JSD PROFESSIONAL SERVICES, INC.

