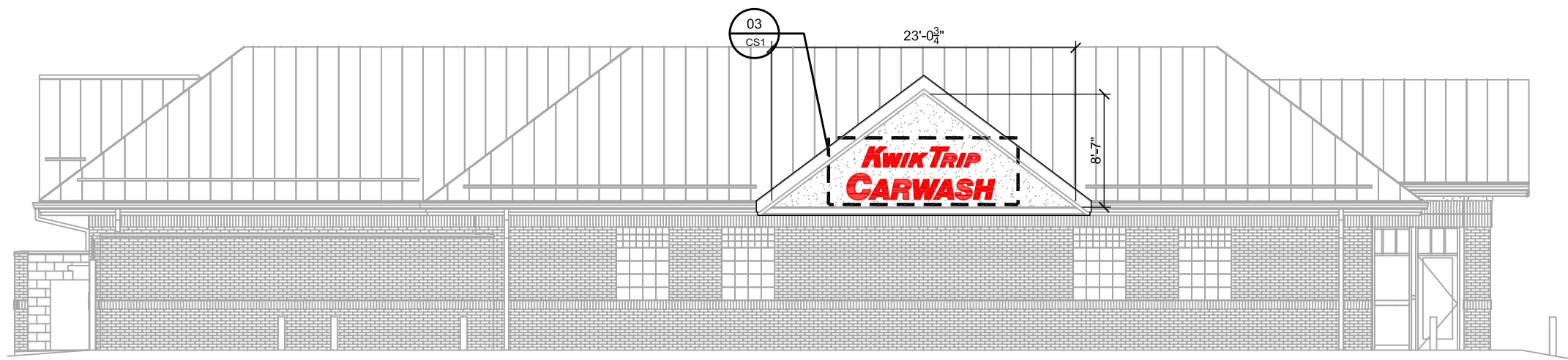


STORE ELEVATION

SCALE: 3/32" = 1'-0"



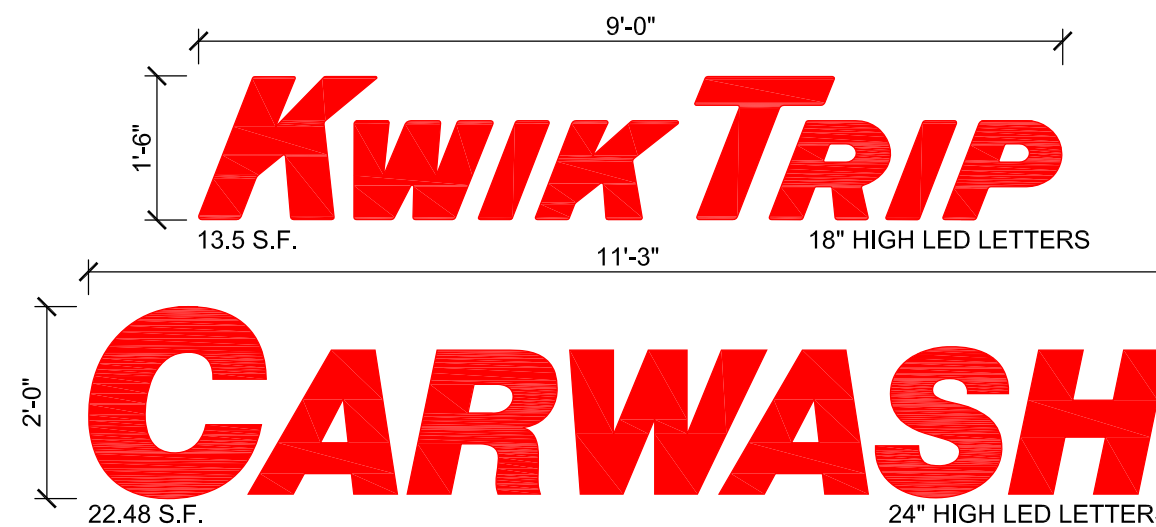
STORE ELEVATION

SCALE: 3/32" = 1'-0"



LOGO DETAIL - SIGN #01

SCALE: 1/2" = 1'-0"



LOGO DETAIL - SIGN #03

SCALE: 1/2" = 1'-0"

**Kwik
TRIP**

**Kwik
STAR**

KWIK TRIP, Inc.
P.O. BOX 2107
1626 OAK STREET
LA CROSSE, WI 54602-2107
PH. (608) 781-8988
FAX (608) 781-8960

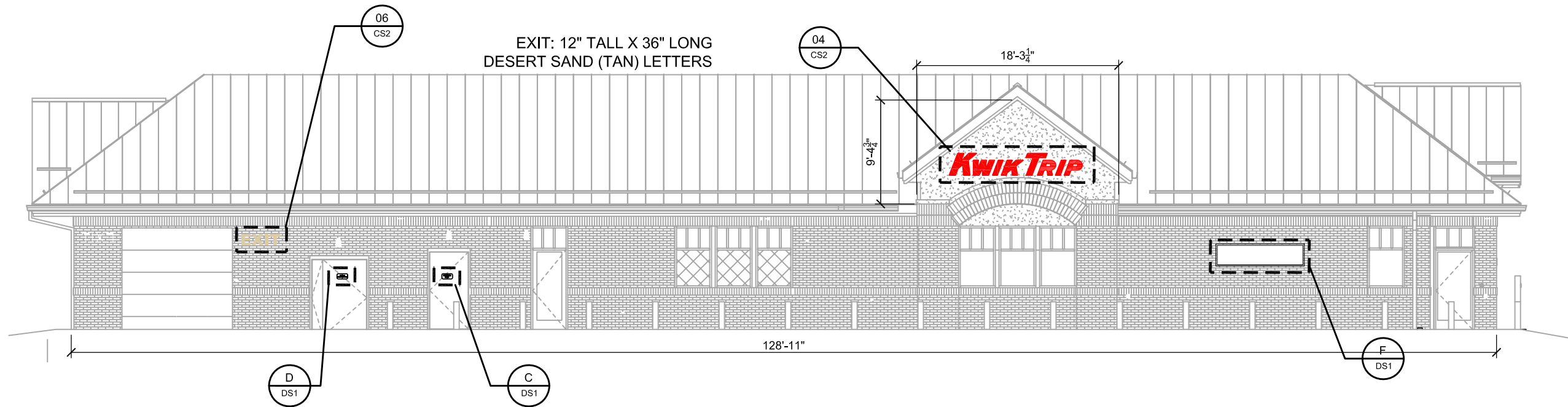
CONVENIENCE STORE SIGNAGE

CONVENIENCE STORE #1219
WITH 1 BAY CARWASH

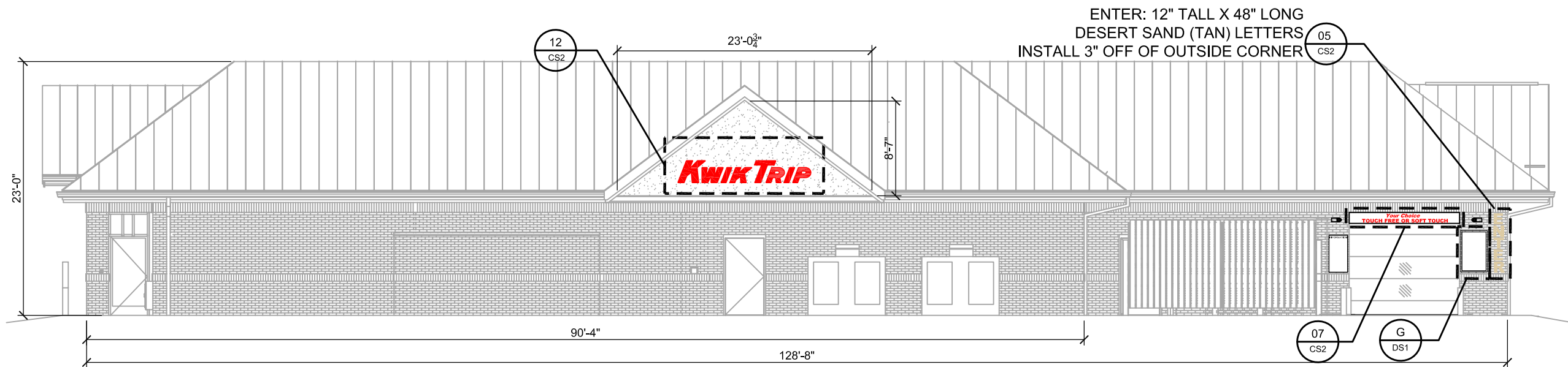
HWY 59 & X
WAUKESHA, WI

#	DATE	DESCRIPTION
△	2021/10/19	GABLE ADDED

DRAWN BY	KMK
SCALE	MULTIPLE
PROJ. NO.	0001
DATE	2021-08-16
SHEET	CS1



STORE ELEVATION
SCALE: 3/32" = 1'-0"



STORE ELEVATION
SCALE: 3/32" = 1'-0"



LOGO DETAIL - SIGNS #04 & #12
SCALE: 1/2" = 1'-0"

ENTER: 12" TALL X 48" LONG
DESERT SAND (TAN) LETTERS
INSTALL 3" OFF OF OUTSIDE CORNER

**Your Choice
TOUCH FREE OR SOFT TOUCH**

NON-LIT INFORMATIONAL SIGN
RED VINYL ON WHITE ALUMINUM
1'-0"H X 10'-0"W = 10.0 SQ FT

INFORMATIONAL SIGN #07
SCALE: 1/2" = 1'-0"

**KWIK
TRIP**

**KWIK
STAR**

KWIK TRIP, Inc.
P.O. BOX 2107
1626 OAK STREET
LA CROSSE, WI 54602-2107
PH. (608) 781-8988
FAX (608) 781-8960

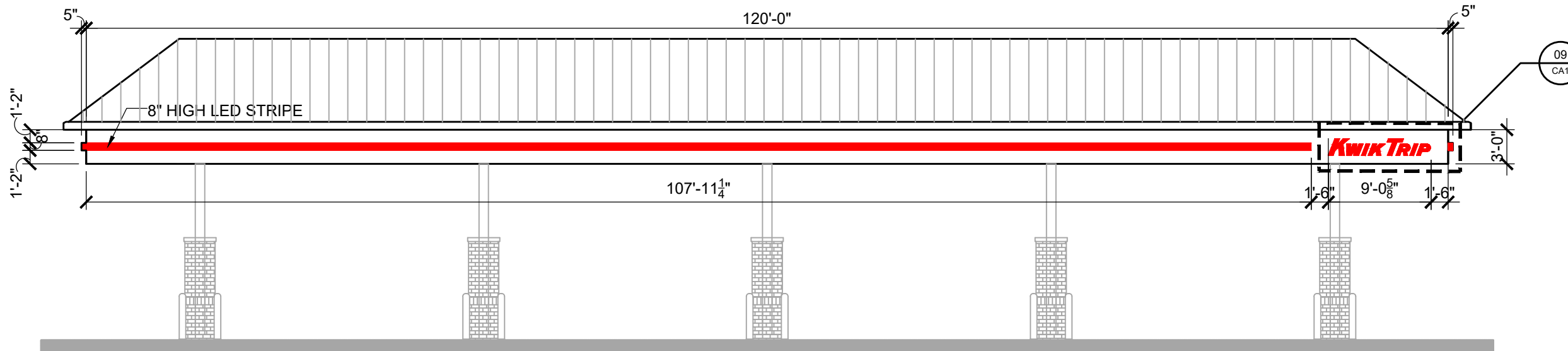
CONVENIENCE STORE SIGNAGE

CONVENIENCE STORE #1219
WITH 1 BAY CARWASH

HWY 59 & X
WAUKESHA, WI

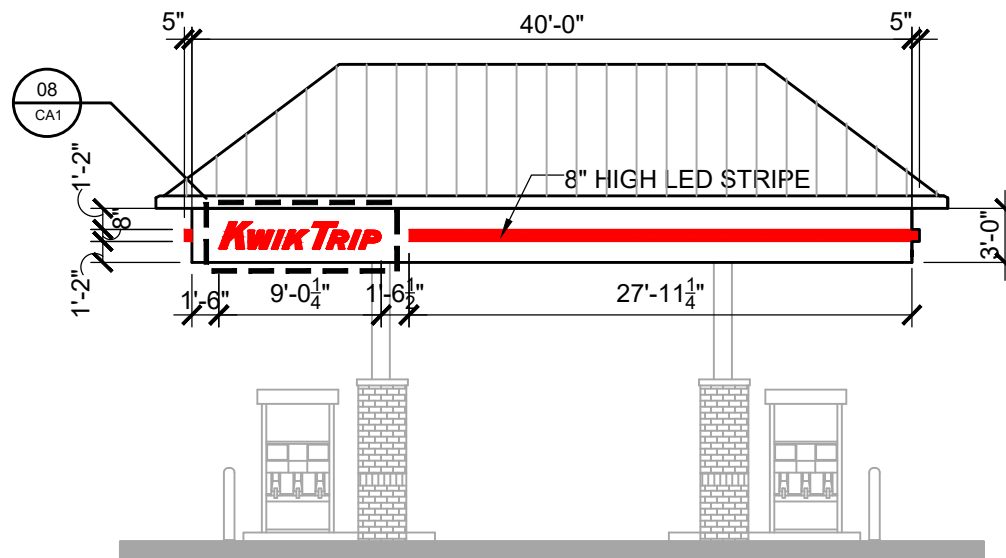
#	DATE	DESCRIPTION
△	2021/10/19	GABLE ADDED

DRAWN BY	KMK
SCALE	MULTIPLE
PROJ. NO.	0001
DATE	2021-08-16
SHEET	CS2



CANOPY ELEVATION

SCALE: 3/32" = 1'-0"



CANOPY ELEVATION

SCALE: 3/32" = 1'-0"



LOGO DETAIL - SIGNS #08 & #09

SCALE: 1/2" = 1'-0"

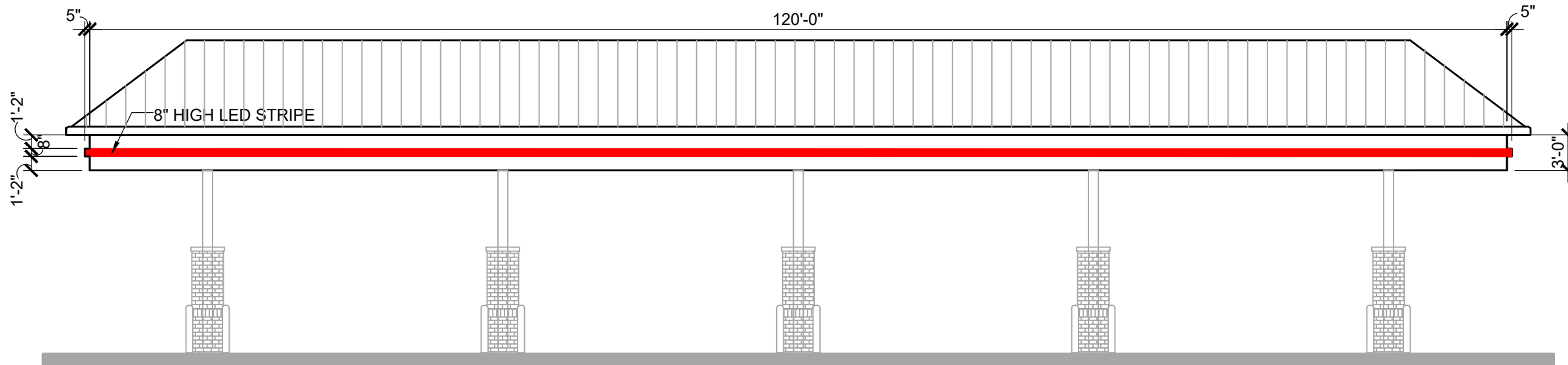


KWIK TRIP, Inc.
 P. O. BOX 2107
 1626 OAK STREET
 LA CROSSE, WI 54602-2107
 PH. (608) 781-8988
 FAX (608) 781-8960

CANOPY SIGNAGE
 CONVENIENCE STORE #XXX
 WITH 1 BAY CARWASH
 HWY 59 & X
 WAUKESHA, WI

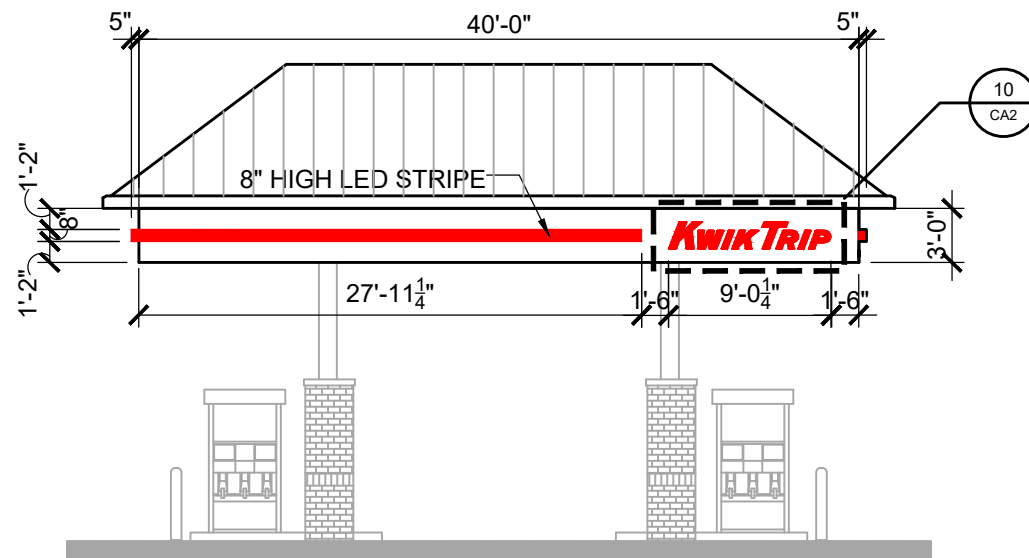
#	DATE	DESCRIPTION

DRAWN BY: KMK
 SCALE: MULTIPLE
 PROJ. NO.: 0001
 DATE: 2021-08-16
 SHEET: CA1



CANOPY ELEVATION

SCALE: 3/32" = 1'-0"



CANOPY ELEVATION

SCALE: 3/32" = 1'-0"



LOGO DETAIL - SIGN #10

SCALE: 1/2" = 1'-0"



KWIK TRIP, Inc.
P.O. BOX 2107
1626 OAK STREET
LA CROSSE, WI 54602-2107
PH. (608) 781-8988
FAX (608) 781-8960

CANOPY SIGNAGE
CONVENIENCE STORE #XXX
WITH 1 BAY CARWASH
HWY 59 & X
WAUKESHA, WI

#	DATE	DESCRIPTION

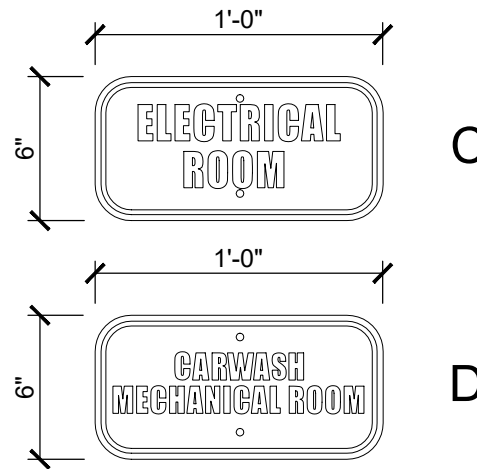
DRAWN BY: KMK
SCALE: MULTIPLE
PROJ. NO.: 0001
DATE: 2021-08-16
SHEET: CA2



5" WHITE VINYL ADDRESS LETTERS
ON GLASS DOOR AS SHOWN ABOVE
(VERIFY ACTUAL NUMBERS WITH PROJECT MANAGER)

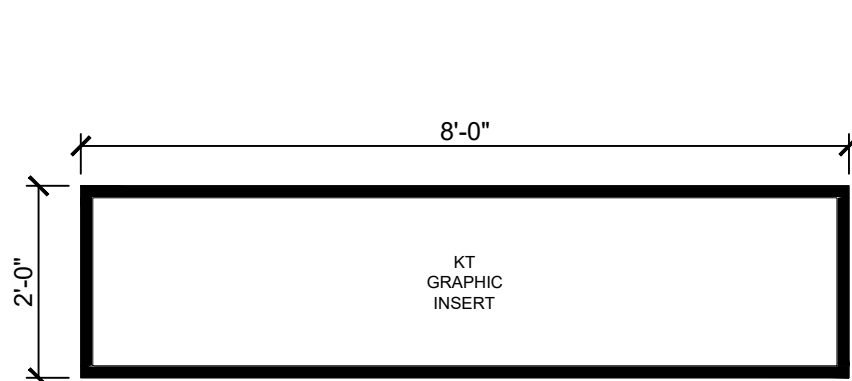
ADDRESS SIGN A

SCALE: 3/4" = 1'-0"

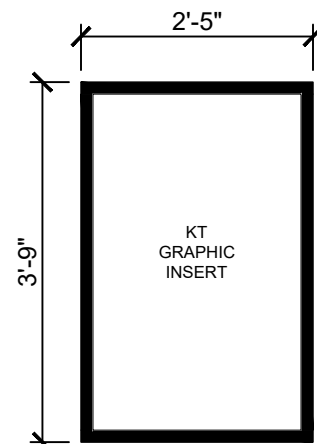


INFORMATIONAL SIGNS C & D

SCALE: 1 1/2" = 1'-0"



"SIGN F"
BLACK ALUMINUM FRAME



"SIGN G"
BLACK ALUMINUM FRAME

INFORMATIONAL SIGNS F & G

SCALE: 1/2" = 1'-0"



NON-LIT DIRECTIONAL SIGN
WHITE VINYL ON RED ALUMINUM
1'-0"H X 4'-0"W = 4.0 SQ FT

DIRECTIONAL SIGN #02

SCALE: 3/4" = 1'-0"

GENERAL SPECIFICATIONS

ROOM SIGNS
Qty: 3 total (different copy on each)
Size: per art
Material: white sign blank
Finish: cut vinyl

Install along with various signs for same site, crew to give to KT trim guys to install.

KWIK TRIP

KWIK STAR

KWIK TRIP, Inc.
P.O. BOX 2107
1626 OAK STREET
LA CROSSE, WI 54602-2107
PH. (608) 781-8988
FAX (608) 781-8960

DIRECTIONAL SIGNAGE

CONVENIENCE STORE #XXX
WITH 1 BAY CARWASH

HWY 59 & X
WAUKESHA, WI

#	DATE	DESCRIPTION

DRAWN BY	KMK
SCALE	MULTIPLE
PROJ. NO.	0001
DATE	2021-08-16
SHEET	DS1

#11 KWIK TRIP FREESTANDING MONUMENT SIGN

SEE ATTACHMENT FROM LA CROSSE SIGN CO

**KWIK
TRIP**

**KWIK
STAR**

KWIK TRIP, Inc.
P.O. BOX 2107
1626 OAK STREET
LA CROSSE, WI 54602-2107
PH. (608) 781-8988
FAX (608) 781-8960

DIRECTIONAL SIGNAGE

CONVENIENCE STORE #1219
WITH 1 BAY CARWASH

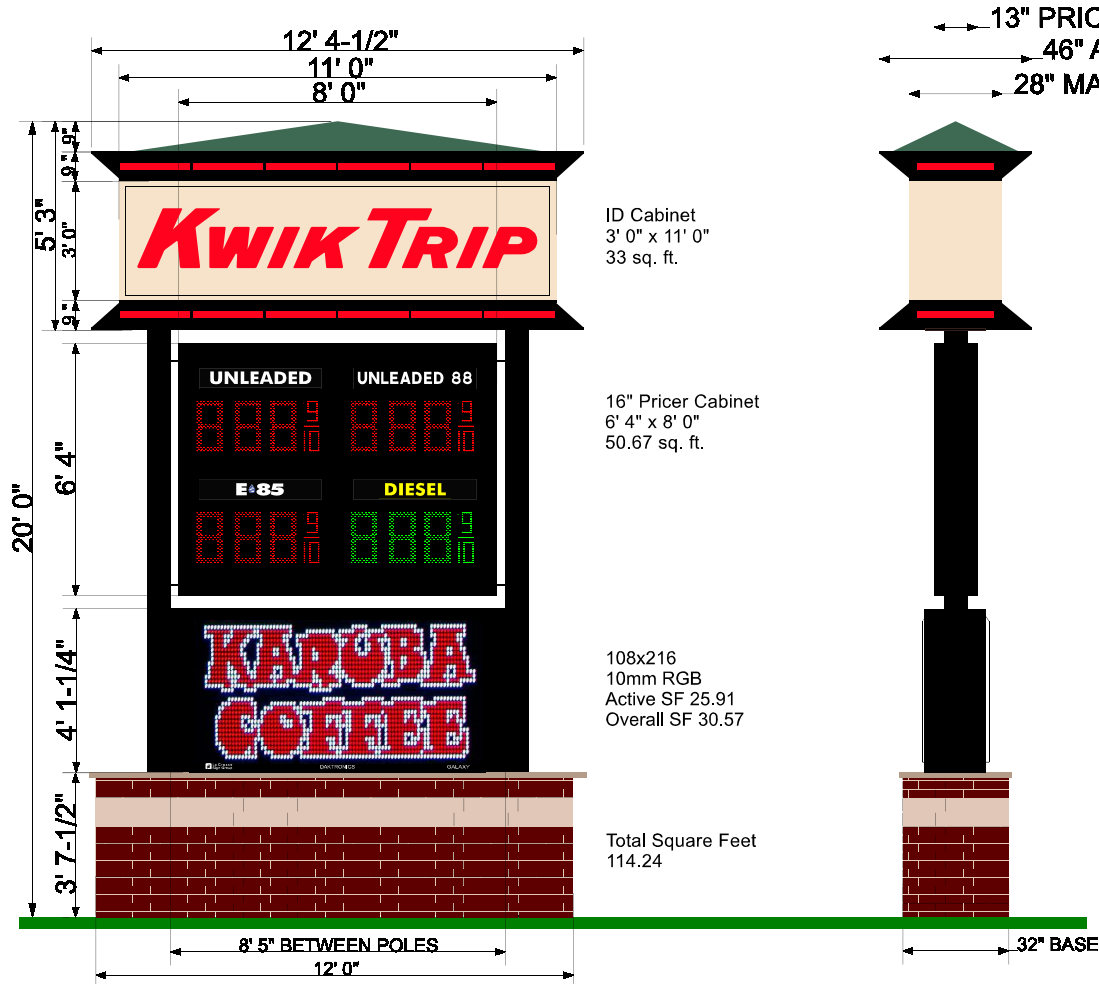
HWY 59 & X
WAUKESHA, WI

#	DATE	DESCRIPTION
▲	2021/10/19	GABLE ADDED
▲	2021 12/21	MONUMENT SIGN

DRAWN BY: KMK
SCALE: MULTIPLE
PROJ. NO.: 0001
DATE: 2021-08-16
SHEET: DS2

DOUBLE FACED MONUMENT SIGN

#1219 Waukesha, WI



Approved by: _____ Date: _____ Landlord: _____ Date: _____

This artwork is copyrighted and may not be otherwise used without permission. It is the property of La Crosse Sign Co., inc. and must be returned to them.

DESIGN

SALES

FILE

COLOR KEY

*COLORS ON SKETCH ARE ONLY A REPRESENTATION. ACTUAL COLOR OF FINISHED PRODUCT MAY DIFFER.



1450 Oak Forest Drive • Onalaska, WI 54650 • 608-781-1450
2242 Mustang Way • Madison, WI 53718 • 608-222-5353
2502 Melby Street • Eau Claire, WI 54703 • 715-835-6189

Drawing by: Danielle Hadley

Sign Type: Monument

Date Created: 3/7/2019

Last Modified:

Scale: 3/16" = 1' 0"

Job Name: Kwik Trip

Job Address:

Salesperson: Cindy Bluske

Job Number: 101716

Revision Number:

Job File Location:

- 1 NA 208080 Beige
- 2 Black S/G paint
- 3 PPG NA 208400
- 4 #2283 Red Acrylic
- 5 White of Acrylic
- 6 Red Brick
- 7 Tan Brick
- 8 Red LED
- 9 Green LED
- 10 Black (230-22)
- 11 Yellow (230-015)
- 12 Blue (230-167)
- 13 NA 307880 Hemlock