



The play components identified on this plan are IPEMA certified. (Unless model number is preceded with *) The use and layout of these components conform to the requirements of ASTM F1487. To verify product certification, visit www.ipema.org

THIS PLAY AREA & PLAY EQUIPMENT IS DESIGNED FOR AGES 2-12 YEARS UNLESS OTHERWISE NOTED ON PLAN.

IT IS THE MANUFACTURER'S OPINION THAT THIS PLAY AREA DOES CONFORM TO THE A.D.A. ACCESSIBILITY STANDARDS, ASSUMING AN ACCESSIBLE PROTECTIVE SURFACING IS PROVIDED, AS INDICATED, OR WITHIN THE ENTIRE USE ZONE.

THIS CONCEPTUAL PLAN WAS BASED ON INFORMATION AVAILABLE TO US. PRIOR TO CONSTRUCTION, DETAILED SITE INFORMATION INCLUDING SITE DIMENSIONS, TOPOGRAPHY, EXISTING UTILITIES, SOIL CONDITIONS, AND DRAINAGE SOLUTIONS SHOULD BE OBTAINED, EVALUATED, & UTILIZED IN THE FINAL DESIGN. PLEASE VERIFY ALL DIMENSIONS OF PLAY AREA, SIZE, ORIENTATION, AND LOCATION OF ALL EXISTING UTILITIES, EQUIPMENT, AND SITE FURNISHINGS PRIOR TO ORDERING. SLIDES SHOULD NOT FACE THE HOT AFTERNOON SUN.

CHOOSE A PROTECTIVE SURFACING MATERIAL THAT HAS A CRITICAL HEIGHT VALUE TO MEET THE MAXIMUM FALL HEIGHT FOR THE EQUIPMENT (REF. ASTM F1487 STANDARD CONSUMER SAFETY PERFORMANCE SPECIFICATION FOR PLAYGROUND EQUIPMENT FOR PUBLIC USE, SECTION 8 CURRENT REVISION). THE SUBSURFACE MUST BE WELL DRAINED. IF THE SOIL DOES NOT DRAIN NATURALLY IT MUST BE TILED OR SLOPED 1/8" TO 1/4" PER FOOT TO A STORM SEWER OR A "FRENCH DRAIN".

AREA OF ACCESSIBLE/PROTECTIVE SURFACING (POURED-IN-PLACE SUGGESTED)
5,290 SQ FT

IT IS THE MANUFACTURER'S OPINION AND INTENT THAT THE LAYOUT OF THESE COMPONENTS CONFORM WITH THE U.S. CONSUMER PRODUCT SAFETY COMMISSION'S (CPSC) "HANDBOOK FOR PUBLIC PLAYGROUND SAFETY".

DESIGNED BY:
KLP

COPYRIGHT: 7/22/21
LANDSCAPE STRUCTURES, INC.
601 7th STREET SOUTH - P.O. BOX 198
DELANO, MINNESOTA 55328
PH: 1-800-328-0035 FAX: 1-763-972-6091

| Date | Previous Drawing # | Initials |
|------|--------------------|----------|
| | | |



SURFACING:
TOTAL AREA = 5,290 SQ FT
8' = 2,800 SQ FT
4' = 2,490 SQ FT
CONCRETE BORDER = 233 LN FT

5-12 YEARS

2-5 YEARS

PlayBooster®
(5-12 years)

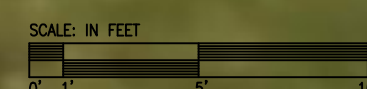
5-12 YEARS

| | | | |
|--|----|----------|---|
| TOTAL ELEVATED PLAY COMPONENTS | 4 | REQUIRED | 0 |
| TOTAL ELEVATED COMPONENTS ACCESSIBLE BY RAMP | 0 | REQUIRED | 0 |
| TOTAL ELEVATED COMPONENTS ACCESSIBLE BY TRANSFER | 2 | REQUIRED | 2 |
| TOTAL ACCESSIBLE GROUND LEVEL COMPONENTS SHOWN | 10 | REQUIRED | 1 |
| TOTAL DIFFERENT TYPES OF GROUND LEVEL COMPONENTS | 7 | REQUIRED | 7 |

PlayShaper®
(2-5 years)

2-5 YEARS

| | | | |
|--|---|----------|---|
| TOTAL ELEVATED PLAY COMPONENTS | 3 | REQUIRED | 0 |
| TOTAL ELEVATED COMPONENTS ACCESSIBLE BY RAMP | 0 | REQUIRED | 0 |
| TOTAL ELEVATED COMPONENTS ACCESSIBLE BY TRANSFER | 3 | REQUIRED | 1 |
| TOTAL ACCESSIBLE GROUND LEVEL COMPONENTS SHOWN | 6 | REQUIRED | 1 |
| TOTAL DIFFERENT TYPES OF GROUND LEVEL COMPONENTS | 6 | REQUIRED | 6 |



Dopp Park
Waukesha, WI

Gerber Leisure
Products, Inc.
Meghan Barrett

SYSTEM TYPE:
Multi-System

DRAWING #:
21072203-01



The play components identified on this plan are IPEMA certified. (Unless model number is preceded with *) The use and layout of these components conform to the requirements of ASTM F1487. To verify product certification, visit www.ipema.org

THIS PLAY AREA & PLAY EQUIPMENT IS DESIGNED FOR AGES 2-12 YEARS UNLESS OTHERWISE NOTED ON PLAN.

IT IS THE MANUFACTURER'S OPINION THAT THIS PLAY AREA DOES CONFORM TO THE A.D.A. ACCESSIBILITY STANDARDS, ASSUMING AN ACCESSIBLE PROTECTIVE SURFACING IS PROVIDED, AS INDICATED, OR WITHIN THE ENTIRE USE ZONE.

THIS CONCEPTUAL PLAN WAS BASED ON INFORMATION AVAILABLE TO US. PRIOR TO CONSTRUCTION, DETAILED SITE INFORMATION INCLUDING SITE DIMENSIONS, TOPOGRAPHY, EXISTING UTILITIES, SOIL CONDITIONS, AND DRAINAGE SOLUTIONS SHOULD BE OBTAINED, EVALUATED, & UTILIZED IN THE FINAL DESIGN. PLEASE VERIFY ALL DIMENSIONS OF PLAY AREA, SIZE, ORIENTATION, AND LOCATION OF ALL EXISTING UTILITIES, EQUIPMENT, AND SITE FURNISHINGS PRIOR TO ORDERING. SLIDES SHOULD NOT FACE THE HOT AFTERNOON SUN.

CHOOSE A PROTECTIVE SURFACING MATERIAL THAT HAS A CRITICAL HEIGHT VALUE TO MEET THE MAXIMUM FALL HEIGHT FOR THE EQUIPMENT (REF. ASTM F1487 STANDARD CONSUMER SAFETY PERFORMANCE SPECIFICATION FOR PLAYGROUND EQUIPMENT FOR PUBLIC USE, SECTION 8 CURRENT REVISION). THE SUBSURFACE MUST BE WELL DRAINED. IF THE SOIL DOES NOT DRAIN NATURALLY IT MUST BE TILED OR SLOPED 1/8" TO 1/4" PER FOOT TO A STORM SEWER OR A "FRENCH DRAIN".

AREA OF ACCESSIBLE/PROTECTIVE SURFACING (POURED-IN-PLACE SUGGESTED) 5,290 SQ FT

IT IS THE MANUFACTURER'S OPINION AND INTENT THAT THE LAYOUT OF THESE COMPONENTS CONFORM WITH THE U.S. CONSUMER PRODUCT SAFETY COMMISSION'S (CPSC) "HANDBOOK FOR PUBLIC PLAYGROUND SAFETY".

DESIGNED BY:
KLP

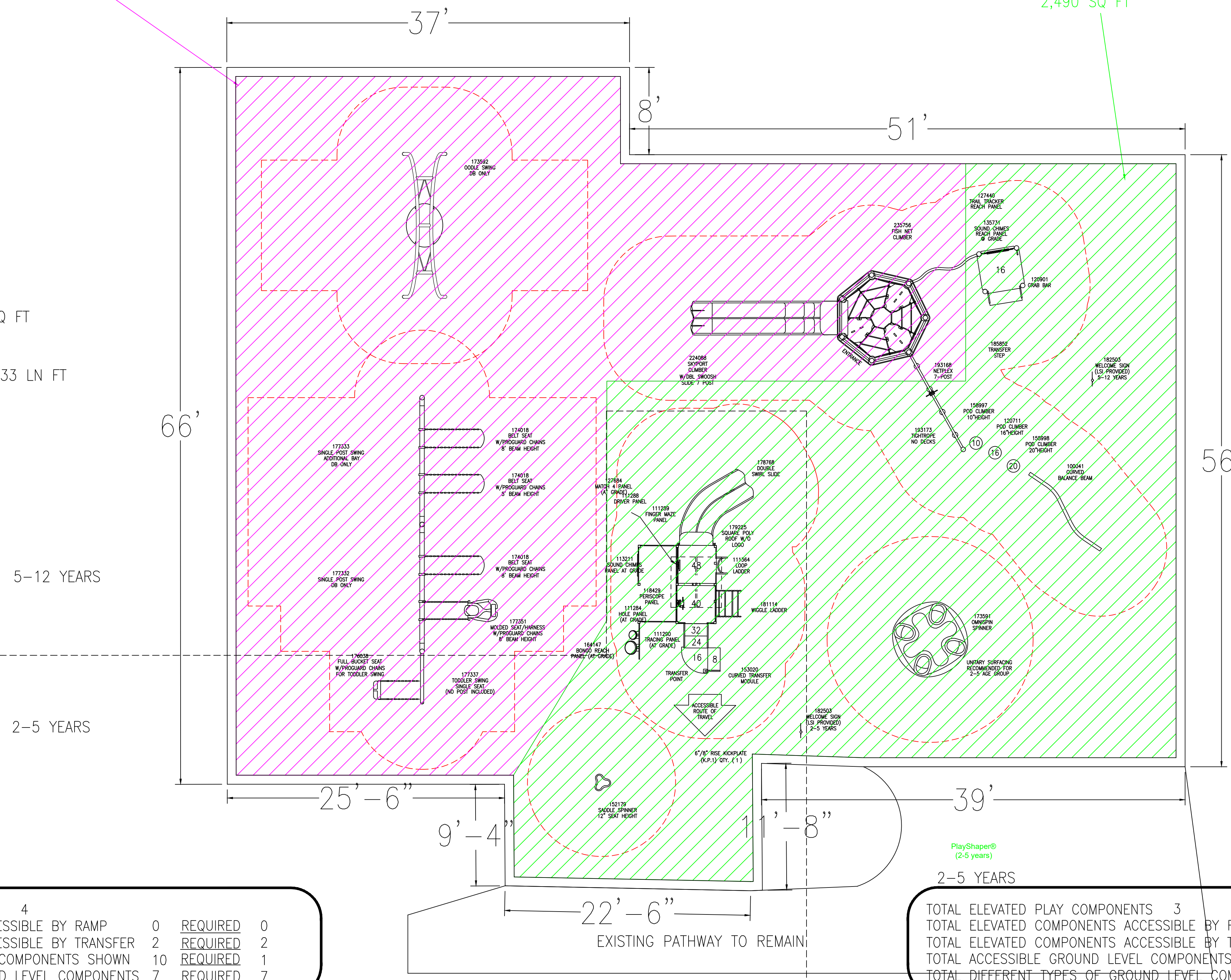
COPYRIGHT: 7/22/21
LANDSCAPE STRUCTURES, INC.
601 7th STREET SOUTH - P.O. BOX 198
DELAND, MINNESOTA 55328
PH: 1-800-328-0035 FAX: 1-763-972-6091

| Date | Previous Drawing # | Initials |
|------|--------------------|----------|
| | | |

8' FALL HEIGHT
2,800 SQ FT

4' FALL HEIGHT
2,490 SQ FT

SURFACING:
TOTAL AREA = 5,290 SQ FT
8' = 2,800 SQ FT
4' = 2,490 SQ FT
CONCRETE BORDER = 233 LN FT



| | | | |
|--|----|----------|---|
| TOTAL ELEVATED PLAY COMPONENTS | 4 | | |
| TOTAL ELEVATED COMPONENTS ACCESSIBLE BY RAMP | 0 | REQUIRED | 0 |
| TOTAL ELEVATED COMPONENTS ACCESSIBLE BY TRANSFER | 2 | REQUIRED | 2 |
| TOTAL ACCESSIBLE GROUND LEVEL COMPONENTS SHOWN | 10 | REQUIRED | 1 |
| TOTAL DIFFERENT TYPES OF GROUND LEVEL COMPONENTS | 7 | REQUIRED | 7 |

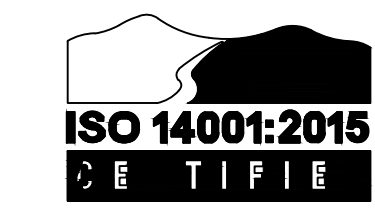
| | | | |
|--|---|----------|---|
| TOTAL ELEVATED PLAY COMPONENTS | 3 | | |
| TOTAL ELEVATED COMPONENTS ACCESSIBLE BY RAMP | 0 | REQUIRED | 0 |
| TOTAL ELEVATED COMPONENTS ACCESSIBLE BY TRANSFER | 3 | REQUIRED | 1 |
| TOTAL ACCESSIBLE GROUND LEVEL COMPONENTS SHOWN | 6 | REQUIRED | 1 |
| TOTAL DIFFERENT TYPES OF GROUND LEVEL COMPONENTS | 6 | REQUIRED | 6 |



Dopp Park
Waukesha, WI

Gerber Leisure Products, Inc.
Meghan Barrett

SYSTEM TYPE:
Multi-System
DRAWING #:
21072203-01





The play components identified on this plan are IPEMA certified. (Unless model number is preceded with *) The use and layout of these components conform to the requirements of ASTM F1487. To verify product certification, visit www.ipema.org

THIS PLAY AREA & PLAY EQUIPMENT IS DESIGNED FOR AGES 2-12 YEARS UNLESS OTHERWISE NOTED ON PLAN.

IT IS THE MANUFACTURER'S OPINION THAT THIS PLAY AREA DOES CONFORM TO THE A.D.A. ACCESSIBILITY STANDARDS, ASSUMING AN ACCESSIBLE PROTECTIVE SURFACING IS PROVIDED, AS INDICATED, OR WITHIN THE ENTIRE USE ZONE.

THIS CONCEPTUAL PLAN WAS BASED ON INFORMATION AVAILABLE TO US. PRIOR TO CONSTRUCTION, DETAILED SITE INFORMATION INCLUDING SITE DIMENSIONS, TOPOGRAPHY, EXISTING UTILITIES, SOIL CONDITIONS, AND DRAINAGE SOLUTIONS SHOULD BE OBTAINED, EVALUATED, & UTILIZED IN THE FINAL DESIGN. PLEASE VERIFY ALL DIMENSIONS OF PLAY AREA, SIZE, ORIENTATION, AND LOCATION OF ALL EXISTING UTILITIES, EQUIPMENT, AND SITE FURNISHINGS PRIOR TO ORDERING. SLIDES SHOULD NOT FACE THE HOT AFTERNOON SUN.

CHOOSE A PROTECTIVE SURFACING MATERIAL THAT HAS A CRITICAL HEIGHT VALUE TO MEET THE MAXIMUM FALL HEIGHT FOR THE EQUIPMENT (REF. ASTM F1487 STANDARD CONSUMER SAFETY PERFORMANCE SPECIFICATION FOR PLAYGROUND EQUIPMENT FOR PUBLIC USE, SECTION 8 CURRENT REVISION). THE SUBSURFACE MUST BE WELL DRAINED. IF THE SOIL DOES NOT DRAIN NATURALLY IT MUST BE TILED OR SLOPED 1/8" TO 1/4" PER FOOT TO A STORM SEWER OR A "FRENCH DRAIN".

AREA OF ACCESSIBLE/PROTECTIVE SURFACING (POURED-IN-PLACE SUGGESTED)
5,290 SQ FT

IT IS THE MANUFACTURER'S OPINION AND INTENT THAT THE LAYOUT OF THESE COMPONENTS CONFORM WITH THE U.S. CONSUMER PRODUCT SAFETY COMMISSION'S (CPSC) "HANDBOOK FOR PUBLIC PLAYGROUND SAFETY".

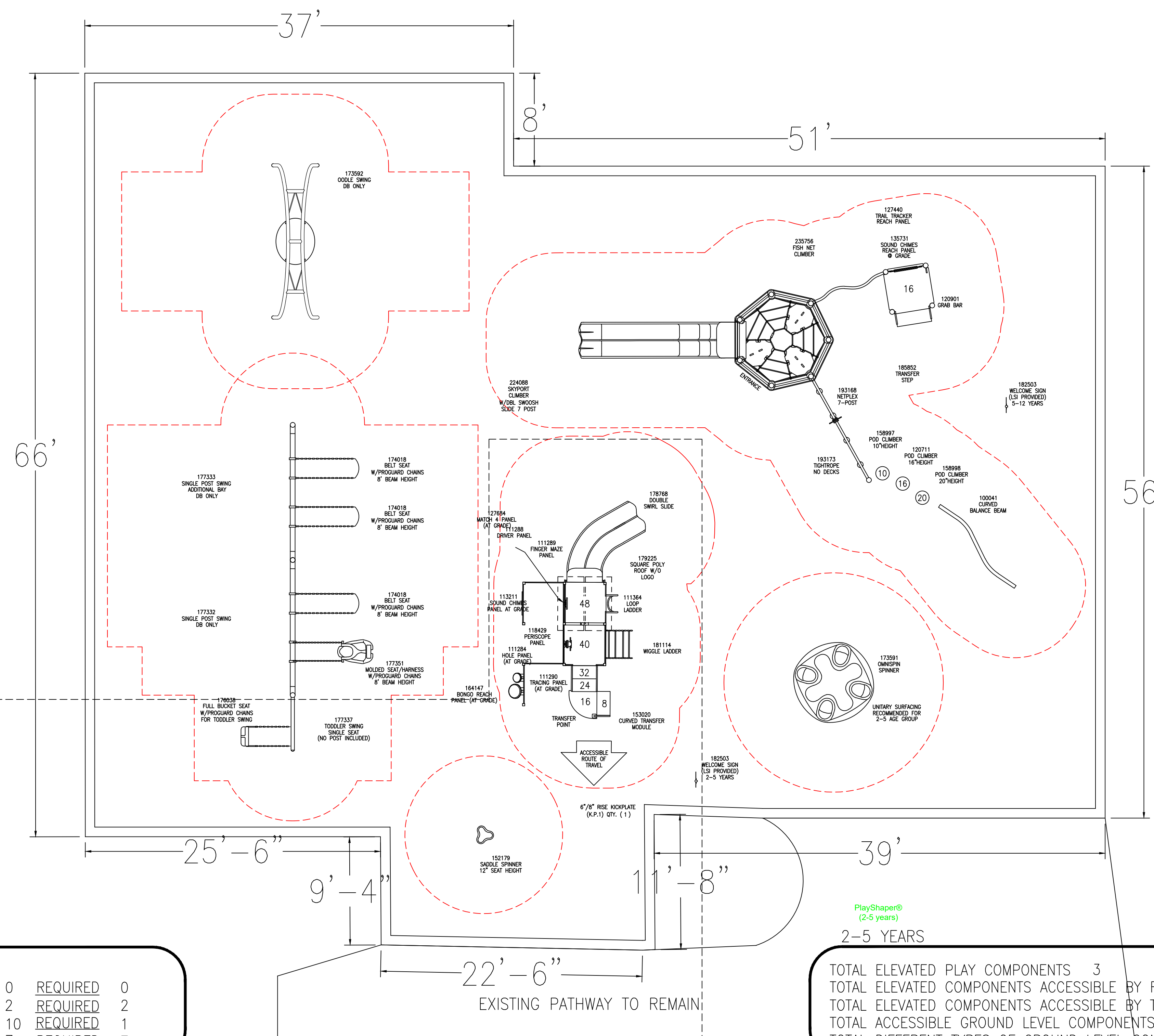
DESIGNED BY:
KLP

COPYRIGHT: 7/22/21
LANDSCAPE STRUCTURES, INC.
601 7th STREET SOUTH - P.O. BOX 198
DELAND, MINNESOTA 55328
PH: 1-800-328-0035 FAX: 1-763-972-6091

| | | |
|------|--------------------|----------|
| Date | Previous Drawing # | Initials |
| | | |



SURFACING:
TOTAL AREA = 5,290 SQ FT
8' = 2,800 SQ FT
4' = 2,490 SQ FT
CONCRETE BORDER = 233 LN FT



PlayBooster® (5-12 years)

5-12 YEARS

| | | | |
|--|----|----------|---|
| TOTAL ELEVATED PLAY COMPONENTS | 4 | | |
| TOTAL ELEVATED COMPONENTS ACCESSIBLE BY RAMP | 0 | REQUIRED | 0 |
| TOTAL ELEVATED COMPONENTS ACCESSIBLE BY TRANSFER | 2 | REQUIRED | 2 |
| TOTAL ACCESSIBLE GROUND LEVEL COMPONENTS SHOWN | 10 | REQUIRED | 1 |
| TOTAL DIFFERENT TYPES OF GROUND LEVEL COMPONENTS | 7 | REQUIRED | 7 |

PlayShaper® (2-5 years)

2-5 YEARS

| | | | |
|--|---|----------|---|
| TOTAL ELEVATED PLAY COMPONENTS | 3 | | |
| TOTAL ELEVATED COMPONENTS ACCESSIBLE BY RAMP | 0 | REQUIRED | 0 |
| TOTAL ELEVATED COMPONENTS ACCESSIBLE BY TRANSFER | 3 | REQUIRED | 1 |
| TOTAL ACCESSIBLE GROUND LEVEL COMPONENTS SHOWN | 6 | REQUIRED | 1 |
| TOTAL DIFFERENT TYPES OF GROUND LEVEL COMPONENTS | 6 | REQUIRED | 6 |



Dopp Park
Waukesha, WI

Gerber Leisure Products, Inc.
Meghan Barrett

SYSTEM TYPE:
Multi-System
DRAWING #:
21072203-01

Dopp Park Component List

Date:07/23/2021
By:KLP

Rep Organization: Gerber Leisure Products
Contact Person: Meghan Barrett

Quote No: Rev 3

Project Title: Dopp Park

Location: Waukesha, WI

| PlayShaper® (2-5 years) | | | | | | |
|--|---------|---|----------------|------------------|----------------|-----------------|
| PHASE-1 Direct Bury Aluminum | | | UNIT | | TOTAL | |
| QTY | NO. | DESCRIPTION | WEIGHT (lb) | PRICE (US \$) | WEIGHT (lb) | PRICE (2021) |
| PlayShaper® | | | | | | |
| Climbers | | | | | | |
| 1 | 111364A | Loop Ladder 48"Dk DB | | | 59.0 | 905.00 |
| 1 | 181114B | Wiggle Ladder 40"Dk DB | | | 48.0 | 690.00 |
| Decks | | | | | | |
| 1 | 153020B | Curved Transfer Module 40"Dk Right DB | | | 234.0 | 2,450.00 |
| 1 | 179349A | Kick Plate 8"Rise | | | 13.0 | 115.00 |
| 2 | 111237A | Square Tenderdeck | 102.0 | 755.00 | 204.0 | 1,510.00 |
| Enclosures | | | | | | |
| 1 | 164147A | Bongo Reach Panel Ground Level | | | 27.0 | 820.00 |
| 1 | 113211A | Chimes Panel Ground Level | | | 47.0 | 1,290.00 |
| 1 | 111288A | Driver Panel Above Deck | | | 47.0 | 725.00 |
| 1 | 111289A | Finger Maze Panel Above Deck | | | 40.0 | 600.00 |
| 1 | 111284A | Hole Panel | | | 23.0 | 460.00 |
| 1 | 127684A | Match 4 Panel Ground Level | | | 35.0 | 905.00 |
| 1 | 118429A | Periscope Panel Above Deck | | | 55.0 | 1,430.00 |
| 1 | 111290A | Tracing Panel Ground Level | | | 33.0 | 610.00 |
| Posts | | | | | | |
| 2 | 111397C | 106"Post DB | 21.0 | 285.00 | 42.0 | 570.00 |
| 4 | 111396B | 137"Post For Roof DB | 27.0 | 345.00 | 108.0 | 1,380.00 |
| 4 | 111397H | 69"Post DB | 14.0 | 245.00 | 56.0 | 980.00 |
| Roofs | | | | | | |
| 1 | 179225B | Square Poly Roof No Logo Panels | | | 99.0 | 1,140.00 |
| Slides | | | | | | |
| 1 | 178768A | Double Swirl Slide 48"Dk DB | | | 176.0 | 2,195.00 |
| Freestanding Play Motion & More Fun | | | | | | |
| 1 | 152179A | Saddle Spinner DB 12"Height | | | 40.0 | 990.00 |
| Signs | | | | | | |
| 1 | 182503A | Welcome Sign (LSI Provided) Ages 2-5 years Direct Bury | | | 24.0 | 0.00 |
| Swings | | | | | | |

Dopp Park Component List

Date:07/23/2021
By:KLP

Rep Organization: Gerber Leisure Products
Contact Person: Meghan Barrett

Quote No: Rev 3

Project Title: Dopp Park

Location: Waukesha, WI

| | | | | |
|---|---------|--|------|--------|
| 1 | 176038G | Full Bucket Seat | 11.0 | 335.00 |
| 1 | 177337A | ProGuard Chains for Toddler Swing Toddler Swing Add-On Beam | 31.0 | 480.00 |

| PlayBooster® (5-12 years) | | | | | | |
|---------------------------------------|---------|---|----------------|------------------|----------------|-----------------|
| PHASE-1 Direct Bury Mixed Material | | | UNIT | | TOTAL | |
| QTY | NO. | DESCRIPTION | WEIGHT (lb) | PRICE (US \$) | WEIGHT (lb) | PRICE (2021) |
| PlayBooster® | | | | | | |
| Bridges & Ramps | | | | | | |
| 1 | 193173C | TightRope Bridge w/o Deck Connections | | | 57.0 | 1,620.00 |
| Climbers Other | | | | | | |
| 1 | 235756A | Fish Net DB | | | 65.0 | 2,540.00 |
| Decks | | | | | | |
| 1 | 111228A | Square Tenderdeck | | | 118.0 | 995.00 |
| 1 | 185852A | Transfer Step w/2 Handloops DB | | | 77.0 | 975.00 |
| Enclosures | | | | | | |
| 1 | 135731A | Chimes Reach Panel Ground Level | | | 31.0 | 1,245.00 |
| 1 | 127440A | Trail Tracker Reach Panel Above Deck | | | 19.0 | 460.00 |
| Mainstructures | | | | | | |
| 1 | 193168A | Netplex 7-Post No Roof Steel Posts and DB Only | | | 930.0 | 6,440.00 |
| 1 | 224088A | Skyport Climber w/Double Swoosh Slide for 7-Post Mainstructure DB Only1 | | | 814.0 | 23,450.00 |
| Motion & More Fun | | | | | | |
| 1 | 120901A | Grab Bar | | | 5.0 | 190.00 |
| Posts | | | | | | |
| 1 | 111404E | 116"Alum Post DB | | | 29.0 | 295.00 |
| 1 | 111404C | 132"Alum Post DB | | | 31.0 | 360.00 |
| 3 | 111404H | 92"Alum Post DB | 23.0 | 275.00 | 69.0 | 825.00 |
| Freestanding Play Climbers | | | | | | |
| 1 | 158997A | Pod Climber 10" DB | | | 13.0 | 275.00 |
| 1 | 120711A | Pod Climber 16" DB | | | 14.0 | 280.00 |

Dopp Park Component List

Date:07/23/2021
By:KLP

Rep Organization: Gerber Leisure Products
Contact Person: Meghan Barrett

Quote No: Rev 3

Project Title: Dopp Park

Location: Waukesha, WI

| | | | | | | |
|------------------------------|---------|---|-----|--------|-------|----------|
| 1 | 158998A | Pod Climber 20" DB | | | 15.0 | 285.00 |
| Motion & More Fun | | | | | | |
| 1 | 173591A | OmniSpin Spinner Surface Mount1 | | | 499.0 | 7,935.00 |
| Signs | | | | | | |
| 1 | 182503C | Welcome Sign (LSI Provided) Ages 5-12 years Direct Bury | | | 24.0 | 0.00 |
| Sports & Fitness | | | | | | |
| 1 | 100041A | Curved Balance Beam DB | | | 71.0 | 795.00 |
| Swings | | | | | | |
| 3 | 174018A | Belt Seat ProGuard Chains for 8' Beam Height | 8.0 | 125.00 | 24.0 | 375.00 |
| 1 | 177351A | Molded Bucket Seat (5-12 yrs) w/Harness ProGuard Chains for 8' Beam Height | | | 48.0 | 830.00 |
| 1 | 173592A | Oodle Swing DB Only1 | | | 395.0 | 5,315.00 |
| 1 | 177332A | Single Post Swing Frame 8' Beam Height Only | | | 213.0 | 1,230.00 |
| 1 | 177333A | Single Post Swing Frame Additional Bay 8' Beam Height Only | | | 129.0 | 915.00 |

| SUMMARY | | | | WEIGHT | PRICE |
|-----------------------------------|-------------------|--|--|----------------|------------------|
| | | | | (lb) | (2021) |
| PlayShaper® (2-5 years) PHASE-1 | | | | 1,452.0 | 20,580.00 |
| PlayBooster® (5-12 years) PHASE-1 | | | | 3,690.0 | 57,630.00 |
| ALL PHASES | PlayShaper® | | | 1,346.0 | 18,775.00 |
| | Freestanding Play | | | 1,551.0 | 20,040.00 |
| | PlayBooster® | | | 2,245.0 | 39,395.00 |
| | Total | | | 5,142.0 | 78,210.00 |

Color Choices

Vivid colors for lively play

ProShield® Colors

For posts/arches, components and clamps, ProShield® finish combines a specially formulated primer with a high-quality, architectural-grade powdercoat top layer. The result is enhanced longevity, greater protection against UV rays, prevention from corrosion, and improved product performance. Custom colors are available for an additional charge.

Learn more about our Color Inspirations at playlsi.com/color-inspirations



Permalene® Color Panels

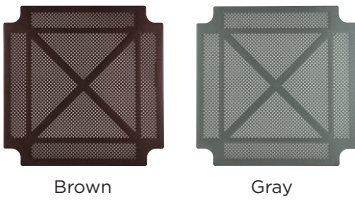
Permalene® panels with a recycled core are a smart choice for your playground and the environment. Available in the 16 colors shown, the distinctive black core results from combining and recycling colored plastic—waste that would otherwise end up in landfills.



Polycarbonate Panels

Hedra® product line option. Translucent panel provides visibility into structure as well as light and color play.





Brown

Gray

Steel Decks The heaviest, thickest decks for long-lasting safety: Flange-formed from 12-gauge steel with safe, rounded corners. Reinforced with .105" x 2" ribs welded on cross for superior strength and a consistently flat surface.



TenderTuff™ Coating

For swing chains, handholds, pipe barriers, wheels, rings, etc. Insulates against temperature extremes and provides a safer grip surface compared to painted metal.



Tan

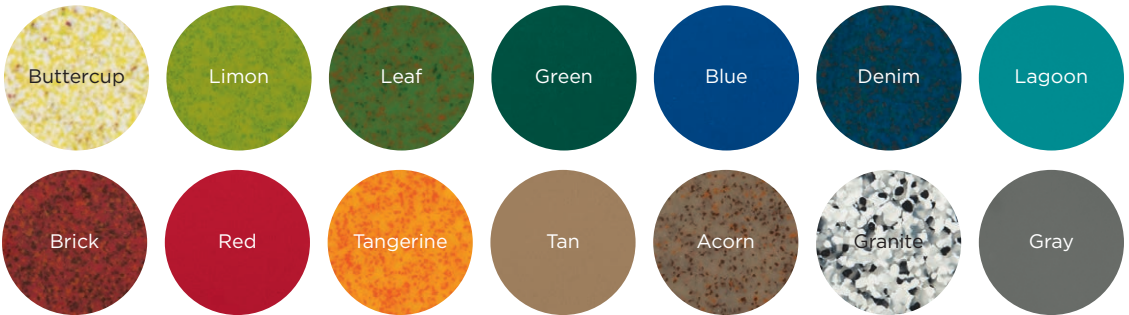
Black

Red

Steel-Reinforced Cables

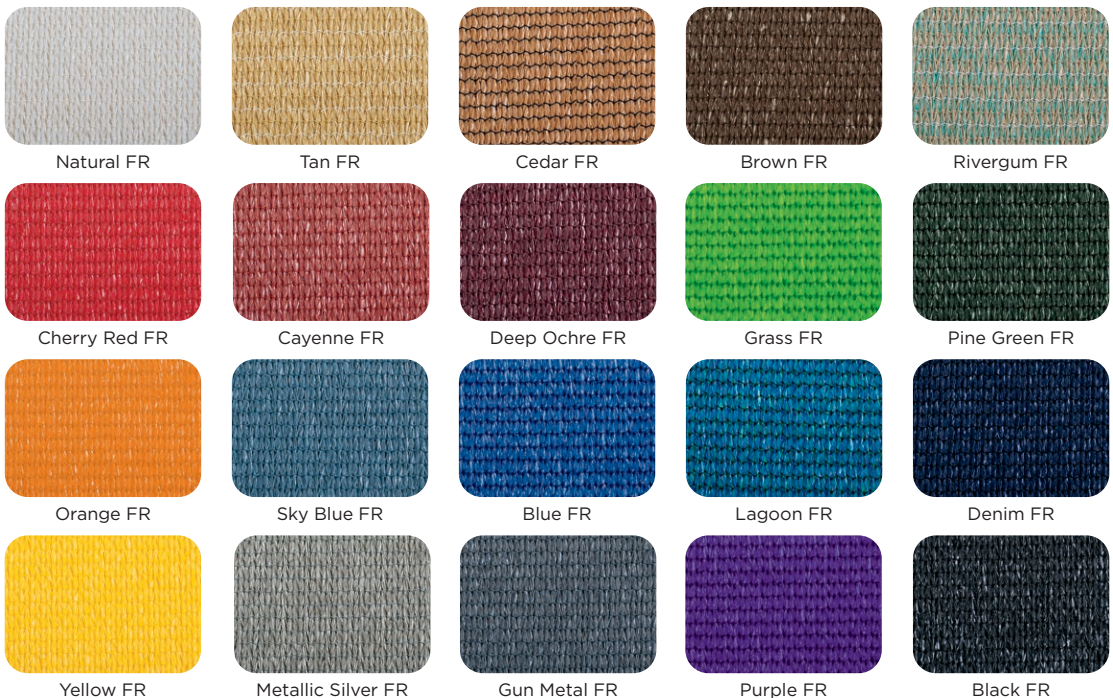
Made of tightly woven, polyester-wrapped, six-stranded galvanized-steel cable. These abrasion-resistant, color-stable cables are extremely durable and vandal resistant.

Polyethylene For slides, tunnels, roofs, etc. The heavy-duty rotationally molded polyethylene material ensures strength and durability while resisting cracking, fading and peeling. * *Limon, Leaf, Denim, Brick, Tangerine, Buttercup, Acorn and Granite* are color blends.



SkyWays® and CoolToppers® Shade Fabrics

Designed to block up to 97% of UV rays and keep playground temperatures up to 30 degrees cooler.



Natural FR

Tan FR

Cedar FR

Brown FR

Rivergum FR

Cherry Red FR

Cayenne FR

Deep Ochre FR

Grass FR

Pine Green FR

Orange FR

Sky Blue FR

Blue FR

Lagoon FR

Denim FR

Yellow FR

Metallic Silver FR

Gun Metal FR

Purple FR

Black FR



Gerber Leisure Products, INC.

PO Box 42
Mount Horeb, WI 53572
Phone: 800-236-7758

QUOTE

| | |
|---------------------|-----------------------|
| DATE: | 7/23/2021 |
| QUOTE Name: | Rev 3- Equipment only |
| Valid Until: | 8/13/2021 |

Prepared by: Meghan Barrett / meghan@gerberleisure.com

| Customer |
|---|
| City of Waukesha- Dopp Park Attn: Keith Johnson, Melissa Lipska 429 S Washington Ave Waukesha, WI 53188 mlipska@waukesha-wi.gov; kjohnson@waukesha-wi.gov |

| DESCRIPTION | QTY | PRICE | AMOUNT |
|---|-----|-------|-----------|
| New Landscape Structures play equipment, per attached 2D, 3Ds & Component List | 1 | 78210 | 78,210.00 |
| Discount on equipment, through Sourcewell Contract Purchasing | 1 | -3230 | -3,230.00 |
| <i>Freight (\$900) and Community Build costs to be quoted separately by Gerber</i> | | | |
| Work to be completed by City of Waukesha Representatives: - Excavation and site preparation, includes removal and disposal of existing playground equipment and surfacing - Aggregate subbase and Poured-in-Place surfacing, supplied and installed - Concrete ribbon border, supplied and installed - Concrete for community build day, volunteers and supplies needed for Community Build | | | |
| <i>The equipment that I have proposed would comply with the current ADA guidelines in and of itself assuming that accessible resilient surfacing is supplied underneath the equipment including under and around the auxiliary ground level equipment, and an access pathway to the area is provided</i> | | | |

TERMS AND CONDITIONS

1. A 50% deposit is required to place the order
 2. Customer will be billed for equipment upon receipt of signed quote
 3. Additional services will be billed upon completion of the project
 4. Payment will be due within 30 days of invoice date
 5. Please mail or email signed price quote to the address above
- Customer Acceptance (sign below):*

x _____
Print Name:

| | |
|------------------|--------------------|
| Subtotal | \$74,980.00 |
| Taxable | \$0.00 |
| Tax rate | 0.000% |
| Tax due | \$0.00 |
| Other | \$0.00 |
| TOTAL Due | \$74,980.00 |

If you have any questions about this price quote, please contact: Meghan Barrett at 608-514-6323 / meghan@gerberleisure.com

Thank You For Your Business!