

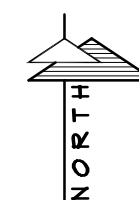
PROJECT NAME:

Action Power Sports Alteration and Addition

202 Travis Lane
Waukesha, WI 53189



ARTIST CONCEPT



2 PROJECT LOCATION

NO SCALE

DRAWING INDEX :

ARCHITECTURAL:

- T 1.0 TITLE SHEET
- C 1.0 SITE DEVELOPMENT PLAN
- C 1.1 SITE DETAILS

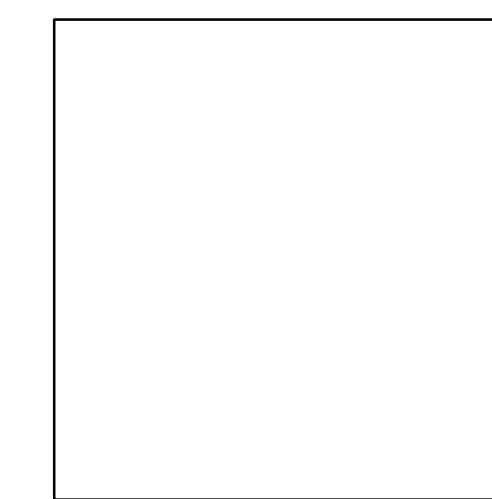
- A 1.0 FIRST FLOOR & MEZZANINE PLAN

- A 2.0 ELEVATIONS
- A 2.1 ELEVATION DETAILS

- A 3.0 SECTIONS AND DETAILS
- A 3.1 SECTIONS AND DETAILS
- A 3.2 SECTIONS AND DETAILS

- A 4.0 PHASE 2 PLAN AND ELEVATION

MECHANICAL, ELECTRICAL, AND PLUMBING
DESIGN - BUILD



Professional Seal

THE
CUSTOM
HOUSE LLC

ARCHITECTURE UNLIMITED

RESIDENTIAL
COMMERCIAL

1506 S. 58th STREET
WEST ALLIS, WI 53214
PHONE (414) 617-0352

Action Power Sports
Alterations
202 Travis Lane
Waukesha, WI 53189

All Rights Reserved

OWNERSHIP OF DOCUMENTS

This document, and the ideas and design incorporated herein, as an instrument of professional service, is the sole property of The Custom House LLC, and is not to be used in whole or in part for any other project or purpose without the expressed written authorization of The Custom House LLC.

COPYRIGHT 2015

Sheet Contents

TITLE SHEET

..
..
..

Issued For:

PRELIM	12 Oct, 2015
PRELIM 2	16 Dec, 2015
PRELIM 3	15 Jan, 2016
Plan Comm.	29 Feb, 2016

Drawn By: DG

Checked By: DG

Date: 19 May, 2015

Job Number: 15.031

Sheet Number

T 1.0

**THE
CUSTOM
HOUSE LLC**

ARCHITECTURE UNLIMITED

RESIDENTIAL
COMMERCIAL

1506 S. 58th STREET
WEST ALLIS, WI 53214
PHONE (414) 617-0352

**Action Power Sports
Alterations**
202 Travis Lane
Waukesha, WI 53189

All Rights Reserved

OWNERSHIP OF DOCUMENTS

This document, and the ideas and design incorporated herein, as an instrument of professional service, is the sole property of The Custom House LLC, and is not to be used in whole or in part for any other project or purpose without the expressed written authorization of The Custom House LLC.

COPYRIGHT 2015

Sheet Contents

SITE DEVELOPMENT PLAN

Issued For:	Date:
PRELIM 1	12 Oct, 2015
PRELIM 2	16 Dec, 2015
PRELIM 3	15 Jan, 2016
Plan Comm.	24 Feb, 2016

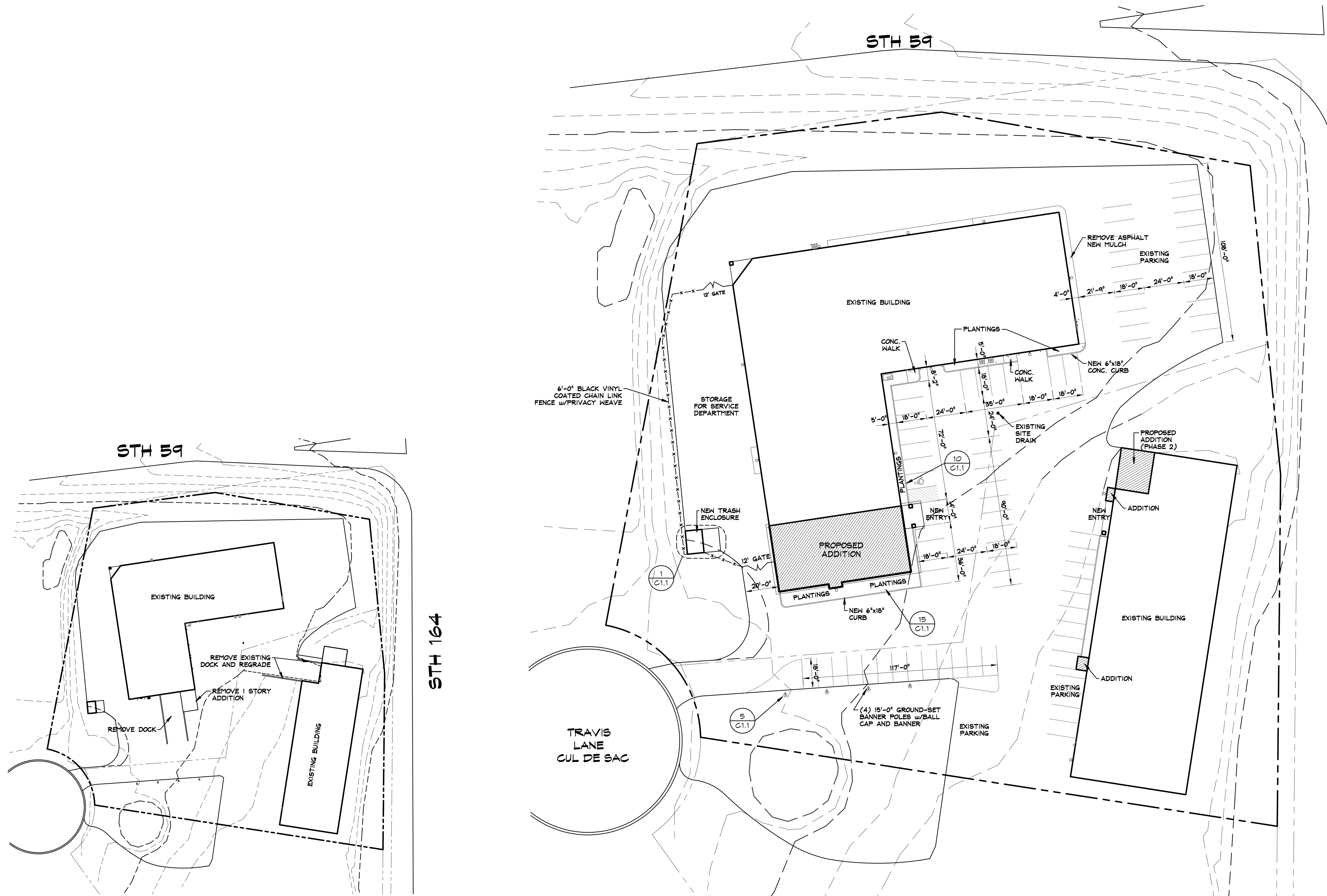
Drawn By: **DS**
Checked By: **DS**

Date: 19 May, 2015

Job Number: 15.031

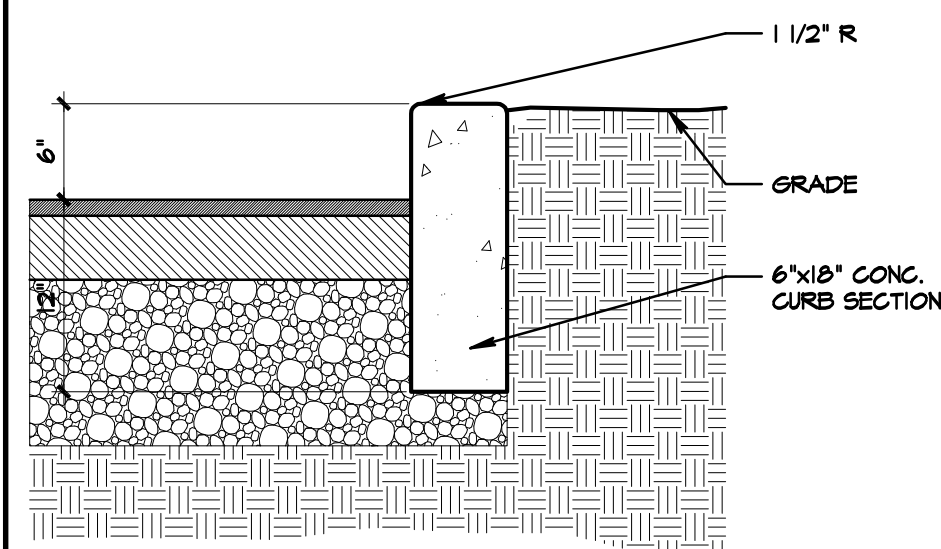
Sheet Number

C 1.0



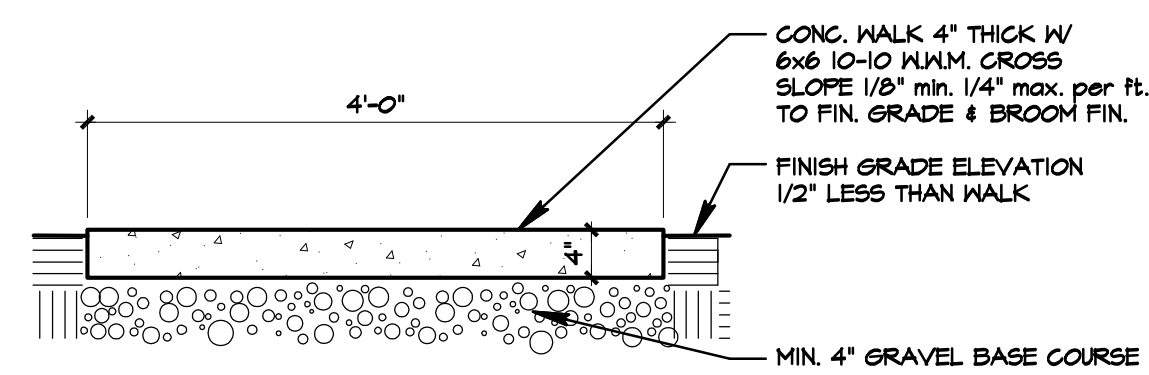
5 EXISTING SITE PLAN
1" = 60'-0"

3 SITE DEVELOPMENT PLAN
1" = 30'-0"



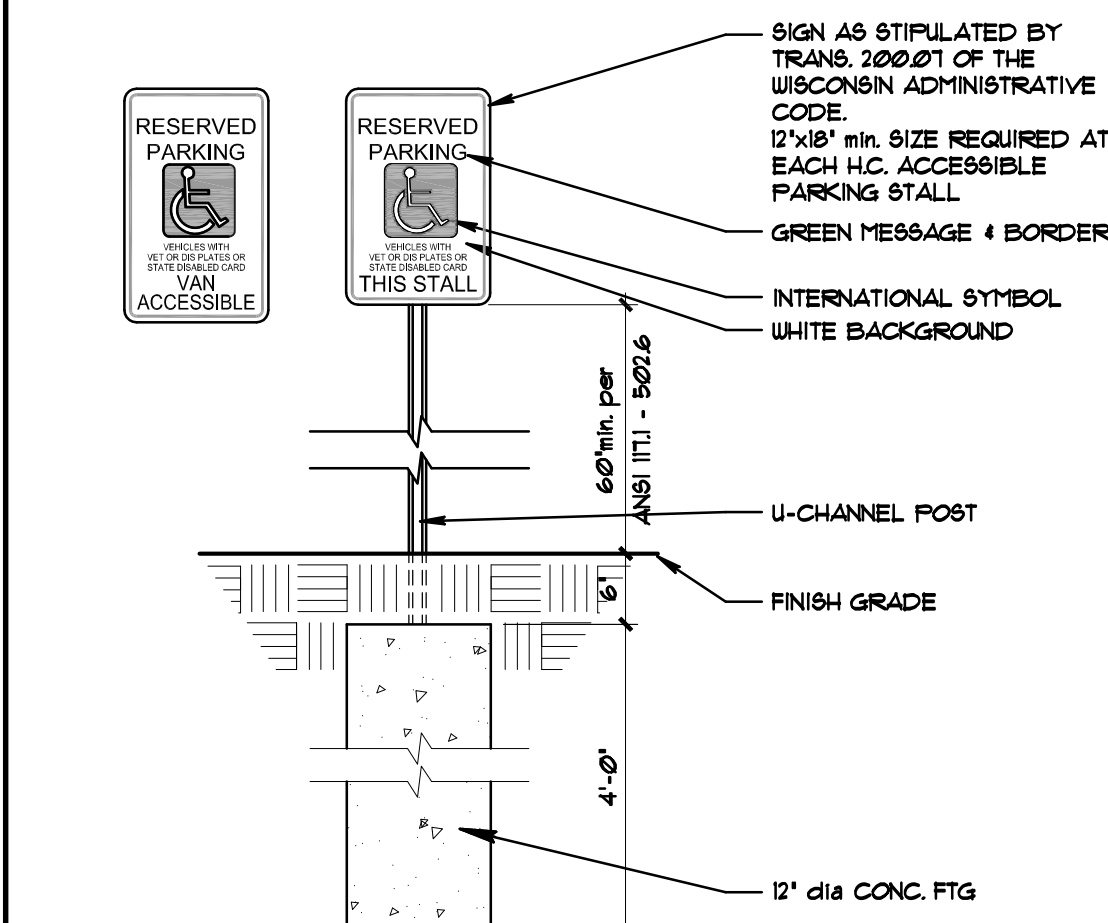
15 CONCRETE CURB SECTION

1"=1'-0"



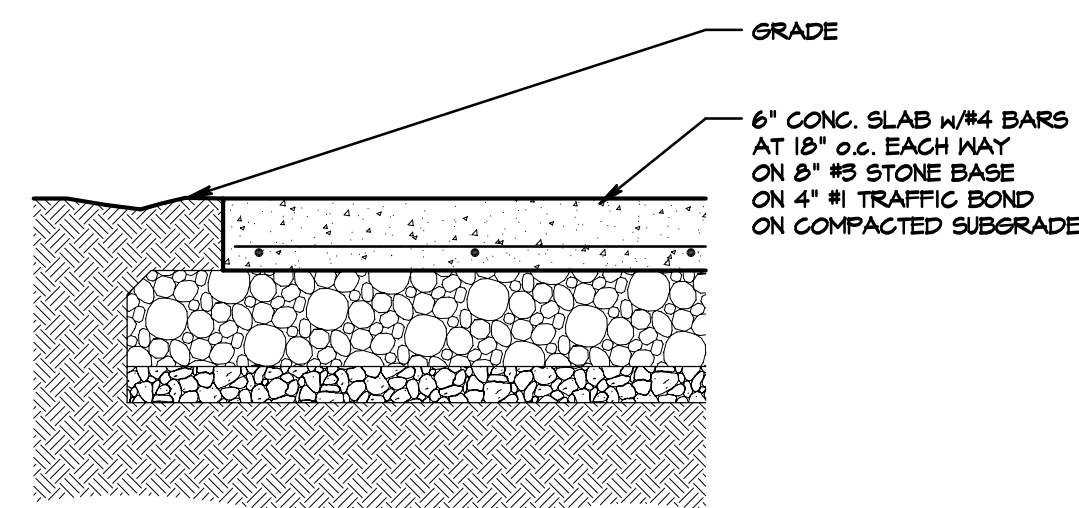
14 CONCRETE SIDEWALK

3/4" = 1'-0"



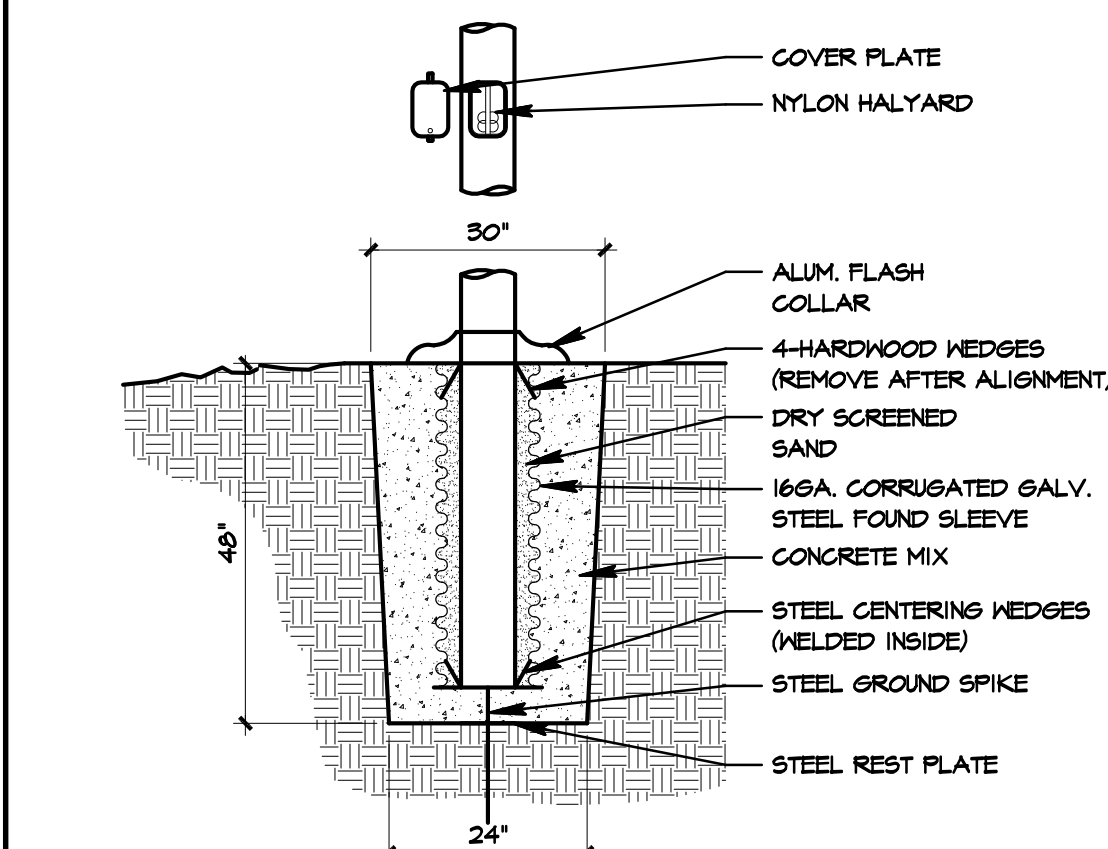
10 HANDICAP PARKING SIGN

NTS



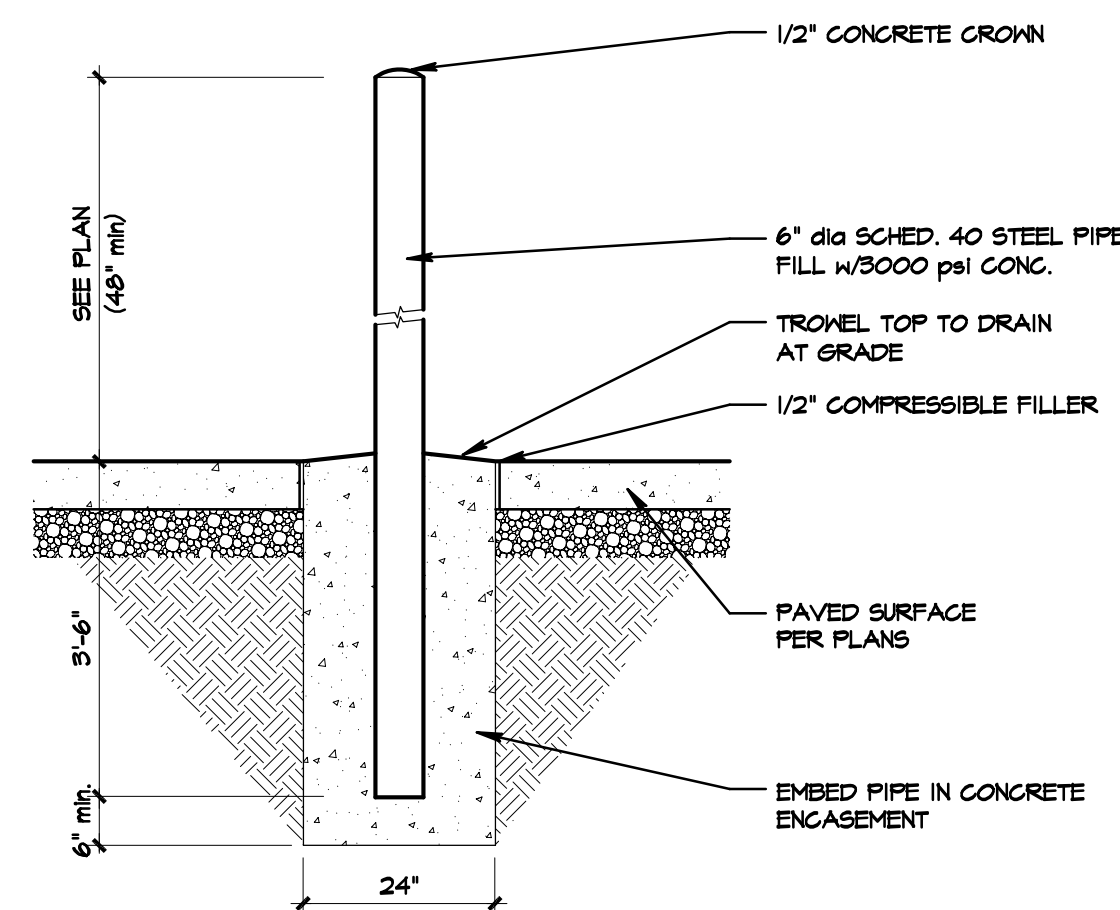
9 REINFORCED APRON

3/4" = 1'-0"



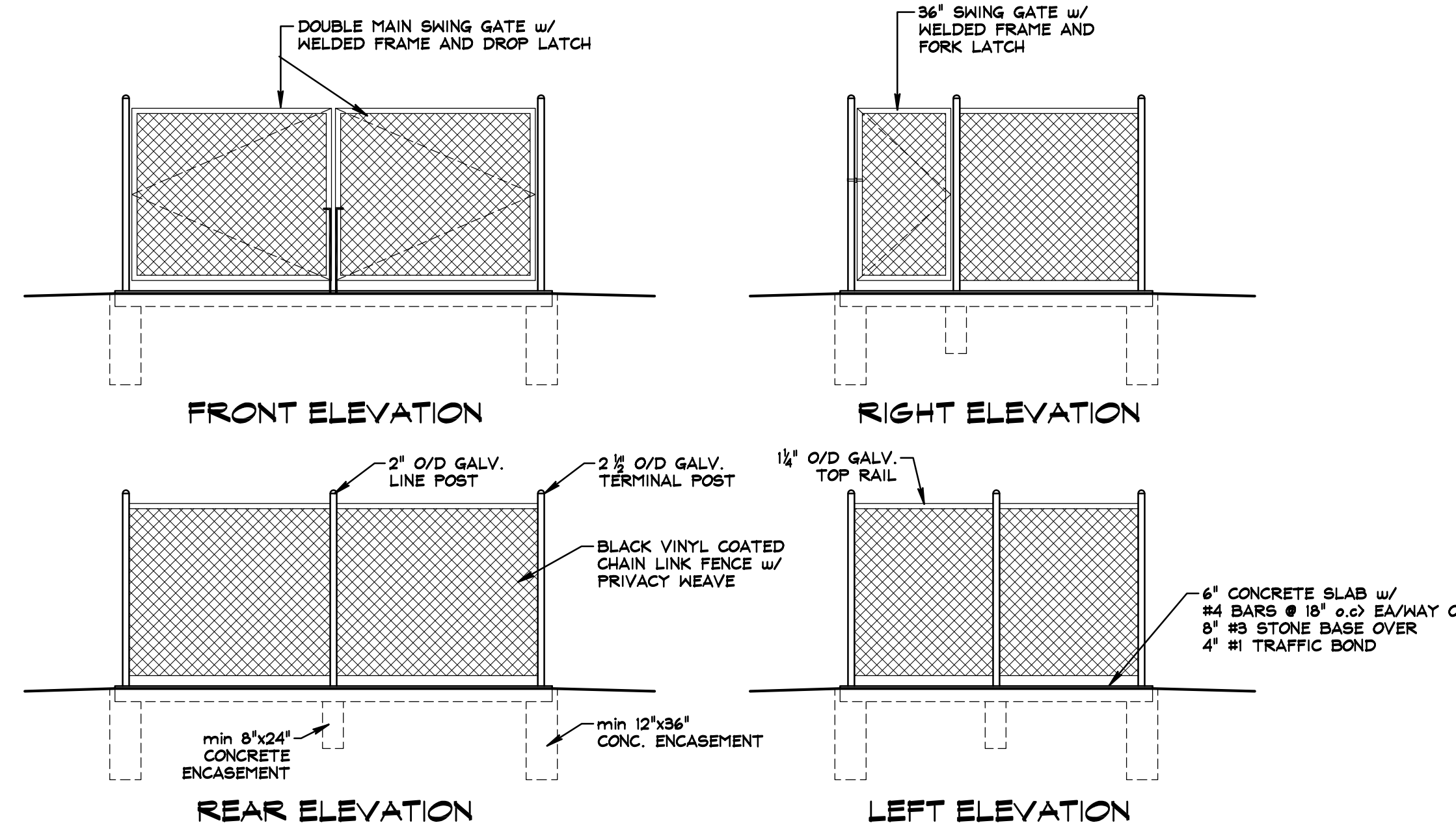
5 FLAG POLE DETAIL

1/2" = 1'-0"



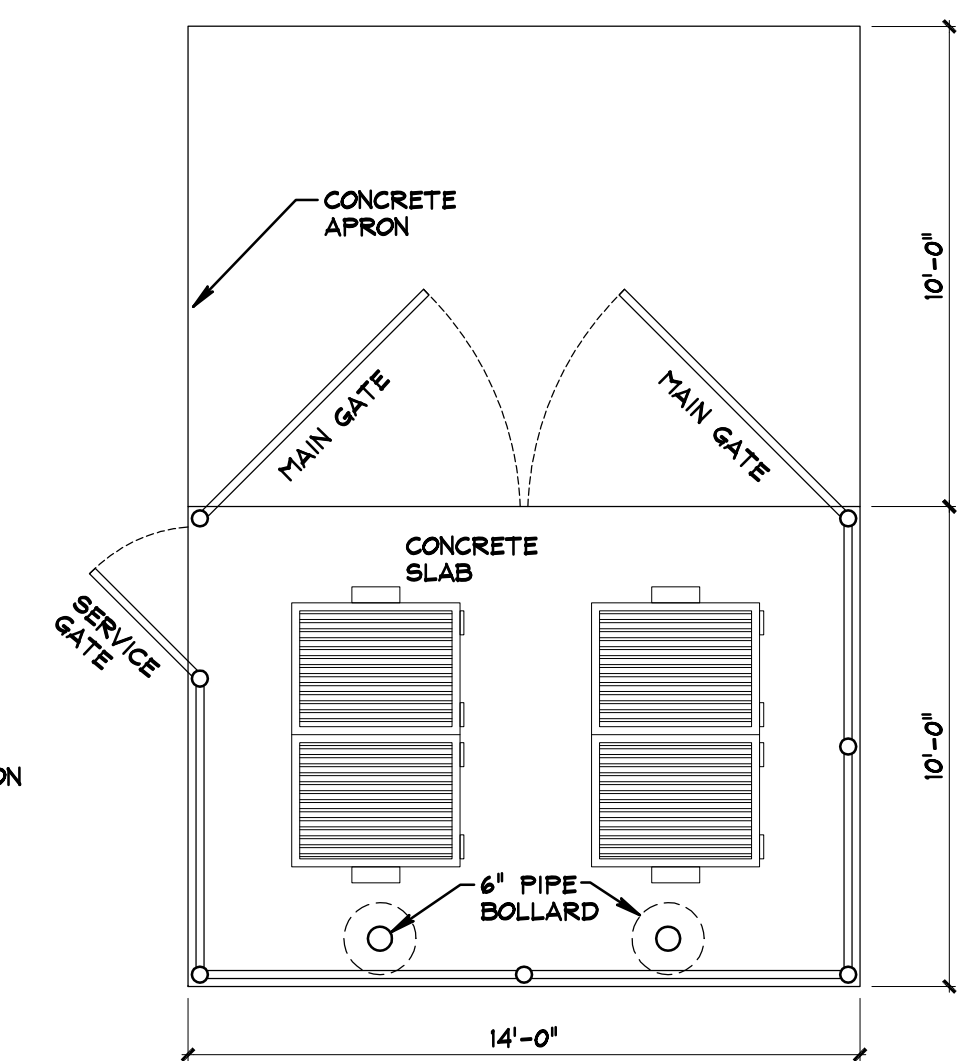
4 6" PIPE BOLLARD DETAIL

1/2" = 1'-0"



1 Plan

1/2" = 1'-0"



1 DUMPSTER ENCLOSURE PLAN

1/4" = 1'-0"

THE CUSTOM HOUSE LLC

ARCHITECTURE UNLIMITED

RESIDENTIAL
COMMERCIAL

1506 S. 58th STREET
WEST ALLIS, WI 53214
PHONE (414) 617-0352

Action Power Sports
Alterations
202 Travis Lane
Waukesha, WI 53189

All Rights Reserved

OWNERSHIP OF DOCUMENTS

This document, and the ideas and design incorporated herein, as an instrument of professional service, is the sole property of The Custom House LLC, and is not to be used in whole or in part for any other project or purpose without the expressed written authorization of The Custom House LLC.

COPYRIGHT 2015

Sheet Contents

SITE DETAILS

Issued For:	Date:
PRELIM 1	12 Oct, 2015
PRELIM 2	16 Dec, 2015
PRELIM 3	15 Jan, 2016
Plan Comm.	29 Feb, 2016

Drawn By: DG

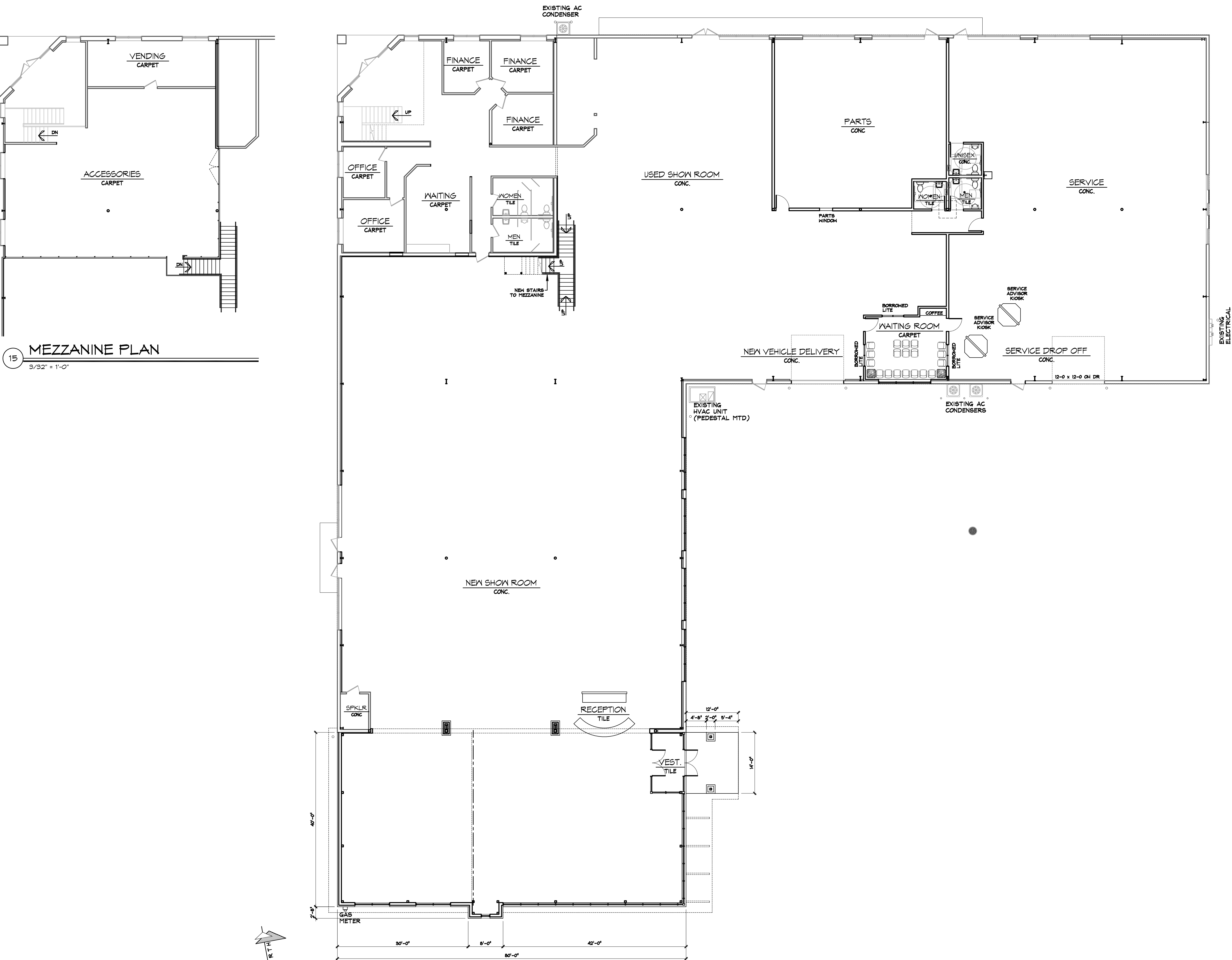
Checked By: DG

Date: 19 May, 2015

Job Number: 15.031

Sheet Number

C 1.1



15 MEZZANINE PLAN
3/32" = 1'-0"

4 PROPOSED FLOOR PLAN
3/32" = 1'-0"

THE CUSTOM HOUSE LLC

ARCHITECTURE UNLIMITED

RESIDENTIAL
COMMERCIAL

1506 S. 58th STREET
WEST ALLIS, WI 53214
PHONE (414) 617-0352

Action Power Sports
Alterations
202 Travis Lane
Waukesha, WI 53189

All Rights Reserved

OWNERSHIP OF DOCUMENTS

This document, and the ideas and design incorporated herein, as an instrument of professional service, is the sole property of The Custom House LLC, and is not to be used in whole or in part for any other project or purpose without the expressed written authorization of The Custom House LLC.

COPYRIGHT 2015

Sheet Contents

- FLOOR PLAN
- ...
- ...
- ...

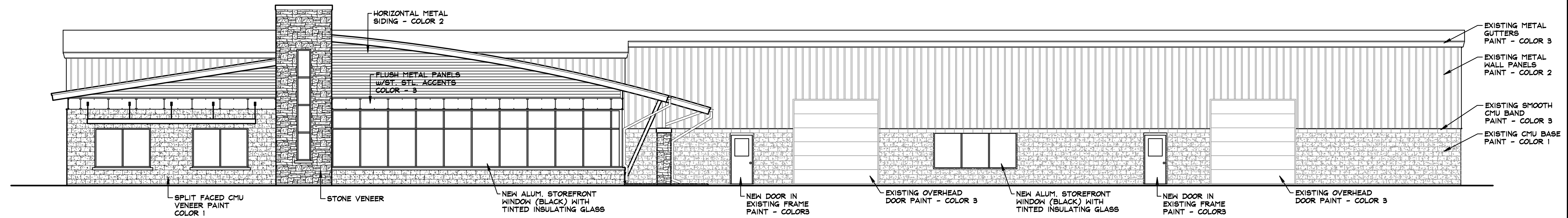
Issued For:	Date:
PRELIM 1	12 Oct, 2015
PRELIM 2	16 Dec, 2015
PRELIM 3	15 Jan, 2016
Plan Comm.	29 Feb, 2016

Drawn By: DG
Checked By: DG

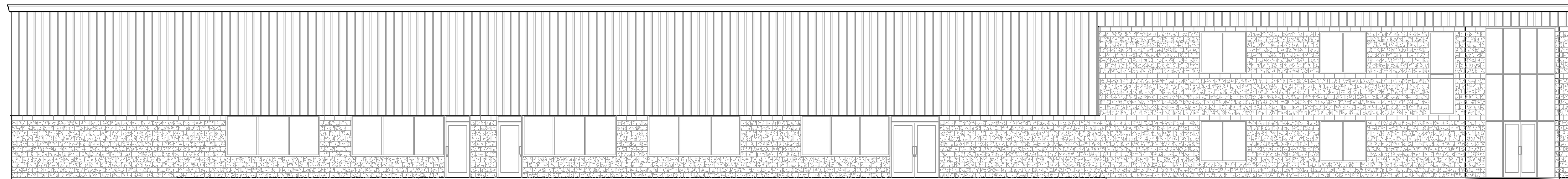
Date: 19 May, 2015
Job Number: 15.031

Sheet Number

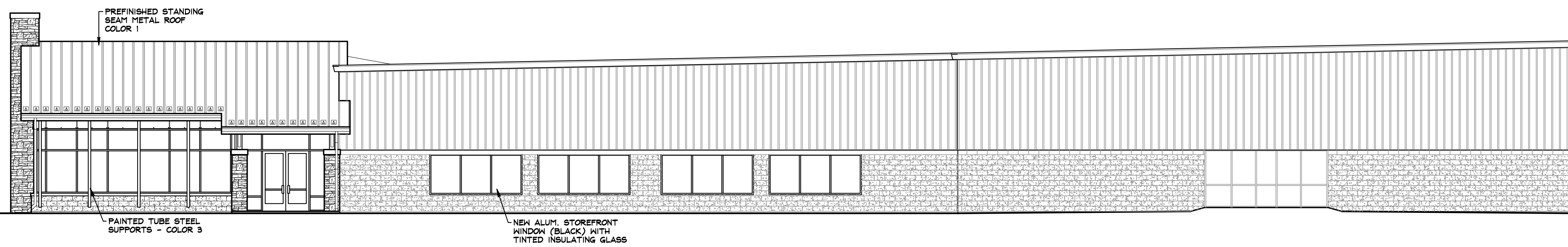
A 1.0



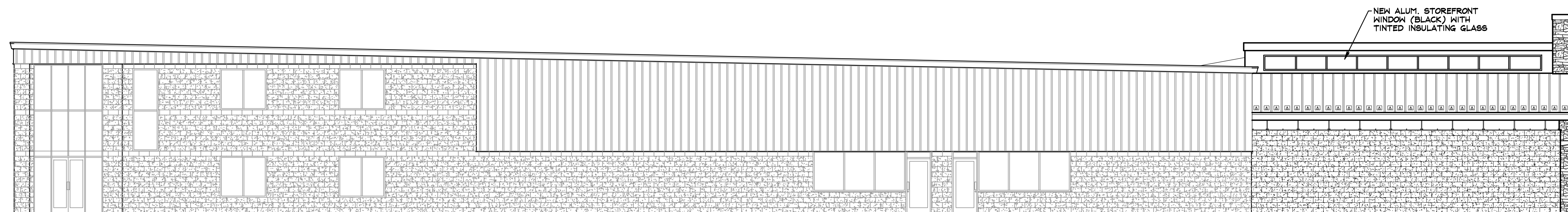
20 SOUTH ELEVATION
1/8" = 1'-0"



15 NORTH ELEVATION
1/8" = 1'-0"



10 EAST ELEVATION
1/8" = 1'-0"



5 WEST ELEVATION
1/8" = 1'-0"

THE CUSTOM HOUSE LLC

ARCHITECTURE UNLIMITED

RESIDENTIAL
COMMERCIAL

1506 S. 58th STREET
WEST ALLIS, WI 53214
PHONE (414) 617-0352

Action Power Sports
Alterations
202 Travis Lane
Waukesha, WI 53189

All Rights Reserved

OWNERSHIP OF DOCUMENTS

This document, and the ideas and design incorporated herein, as an instrument of professional service, is the sole property of The Custom House LLC, and is not to be used in whole or in part for any other project or purpose without the expressed written authorization of The Custom House LLC.

COPYRIGHT 2015

Sheet Contents

ELEVATIONS

..
..
..

Issued For:	Date:
PRELIM 1	12 Oct. 2015
PRELIM 2	16 Dec. 2015
PRELIM 3	15 Jan. 2016
Plan Comm.	29 Feb. 2016

Drawn By: DG

Checked By: DG

Date: 19 May, 2015

Job Number: 15.031

Sheet Number

A 2.0

THE CUSTOM HOUSE LLC

ARCHITECTURE UNLIMITED

RESIDENTIAL
COMMERCIAL

1506 S. 58th STREET
WEST ALLIS, WI 53214
PHONE (414) 617-0352

Action Power Sports
Alterations
202 Travis Lane
Waukesha, WI 53189

All Rights Reserved

OWNERSHIP OF DOCUMENTS

This document, and the ideas and design incorporated herein, as an instrument of professional service, is the sole property of The Custom House LLC, and is not to be used in whole or in part for any other project or purpose without the expressed written authorization of The Custom House LLC.

COPYRIGHT 2015

Sheet Contents

ELEVATIONS

..
..
..

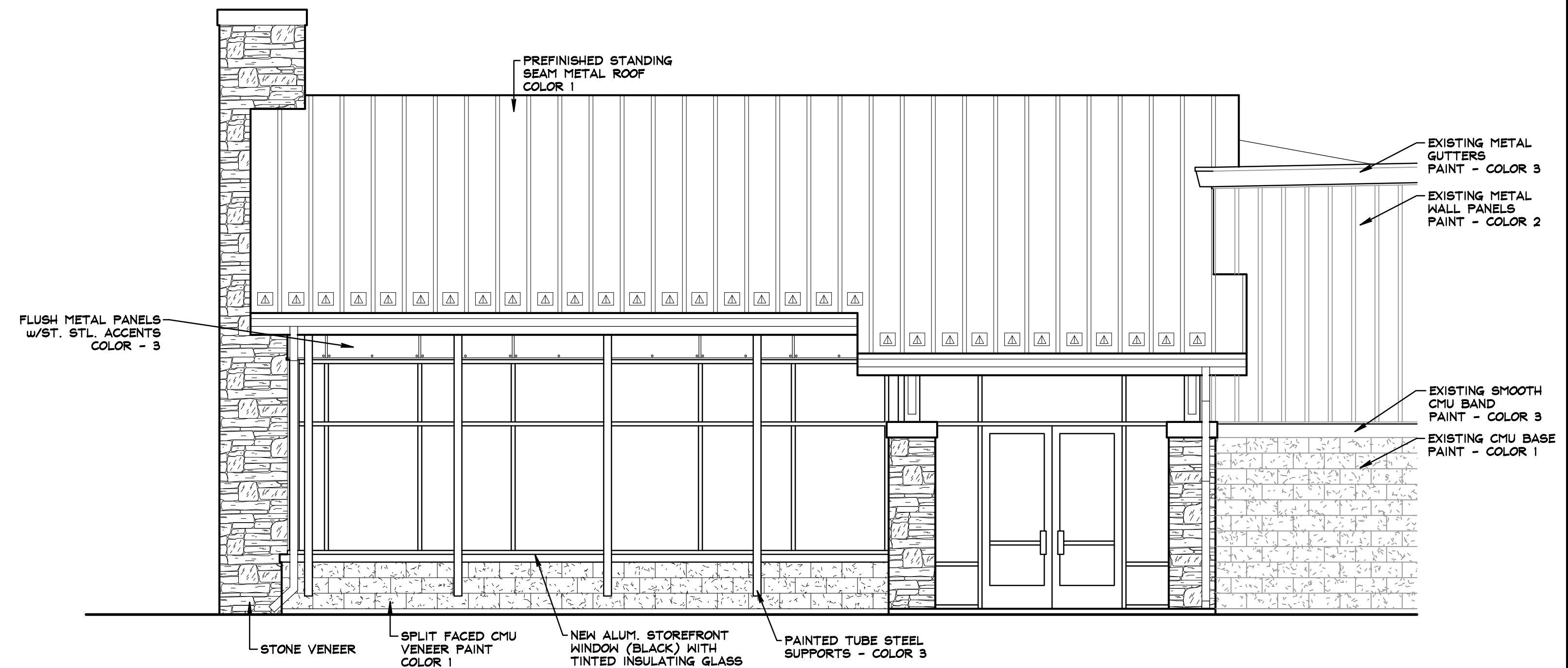
Issued For:	Date:
PRELIM 1	12 Oct. 2015
PRELIM 2	16 Dec. 2015
PRELIM 3	15 Jan. 2016
Plan Comm.	29 Feb. 2016

Drawn By: DG
Checked By: DG

Date: 19 May, 2015
Job Number: 15.031

Sheet Number

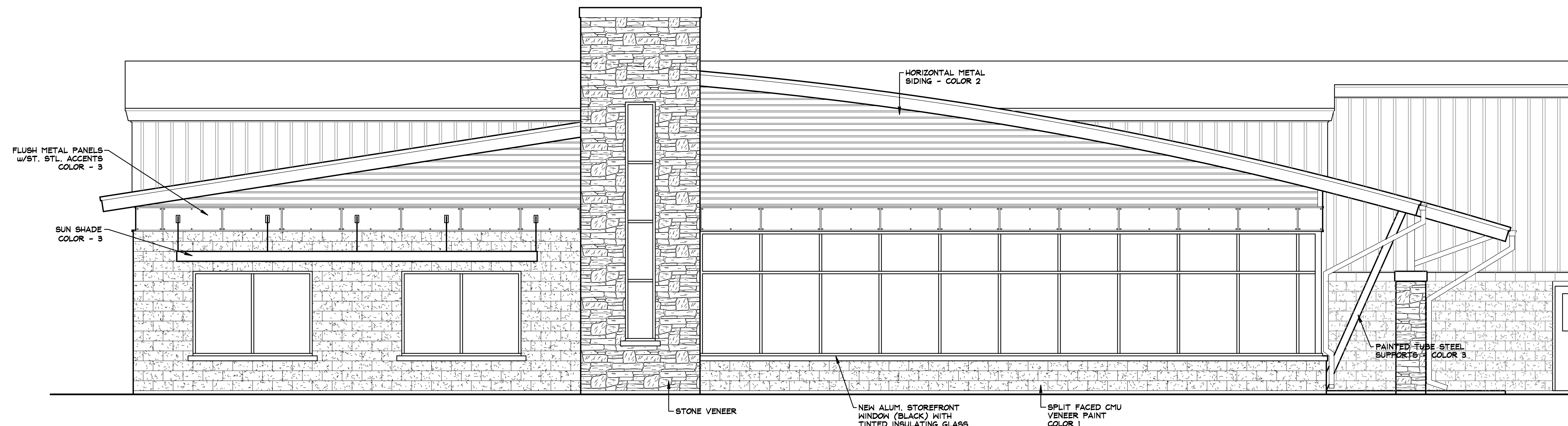
A 2.1



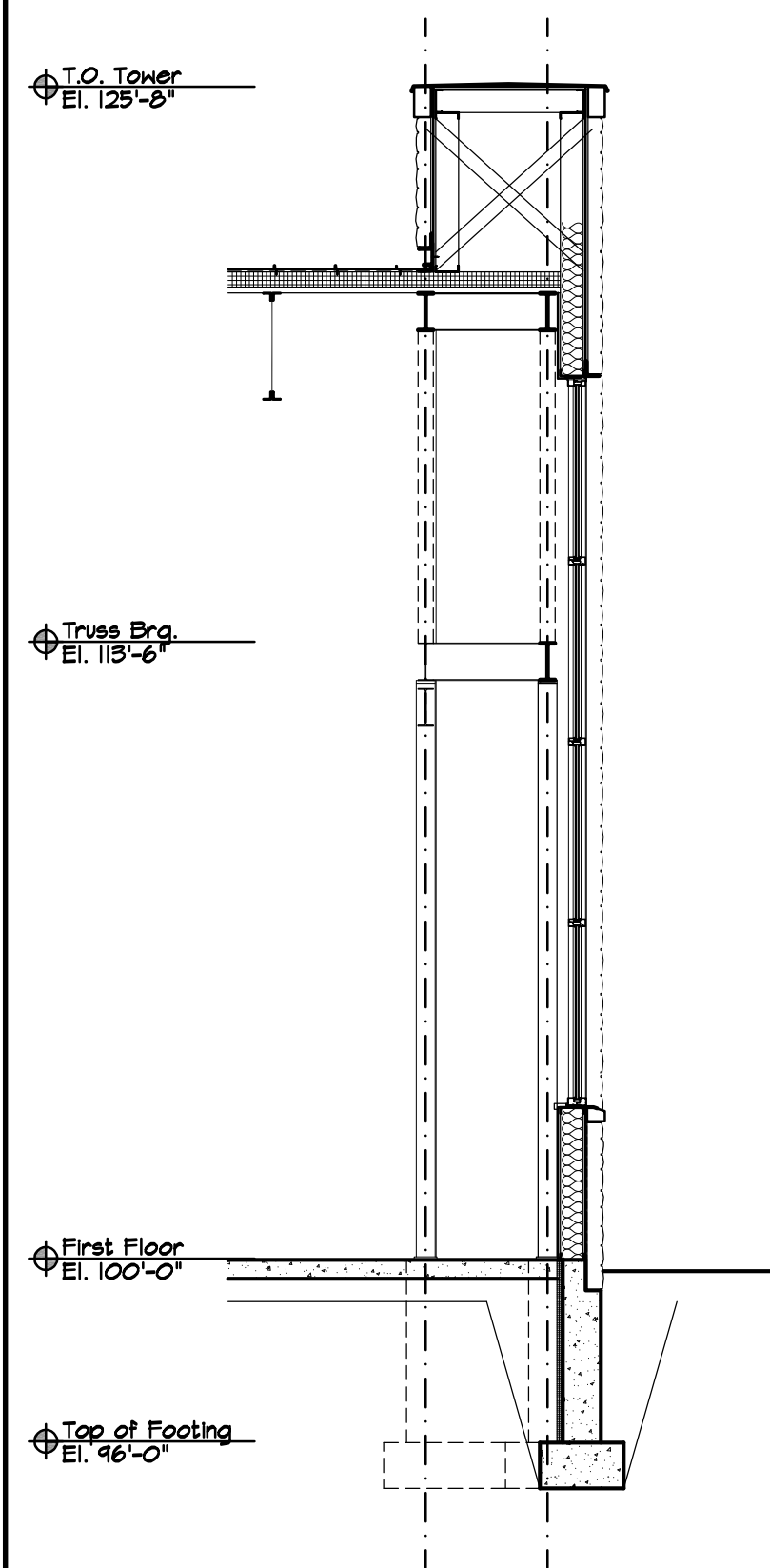
COLOR SCHEDULE:

- COLOR 1 SANDSTONE (PAC-CLAD OR EQ.)
- COLOR 2 SLATE GREY (PAC-CLAD OR EQ.)
- COLOR 3 MANSARD BROWN (PAC-CLAD OR EQ.)
- STONE HALQUIST STONE 'MOSSY MOUNTAIN STONE'

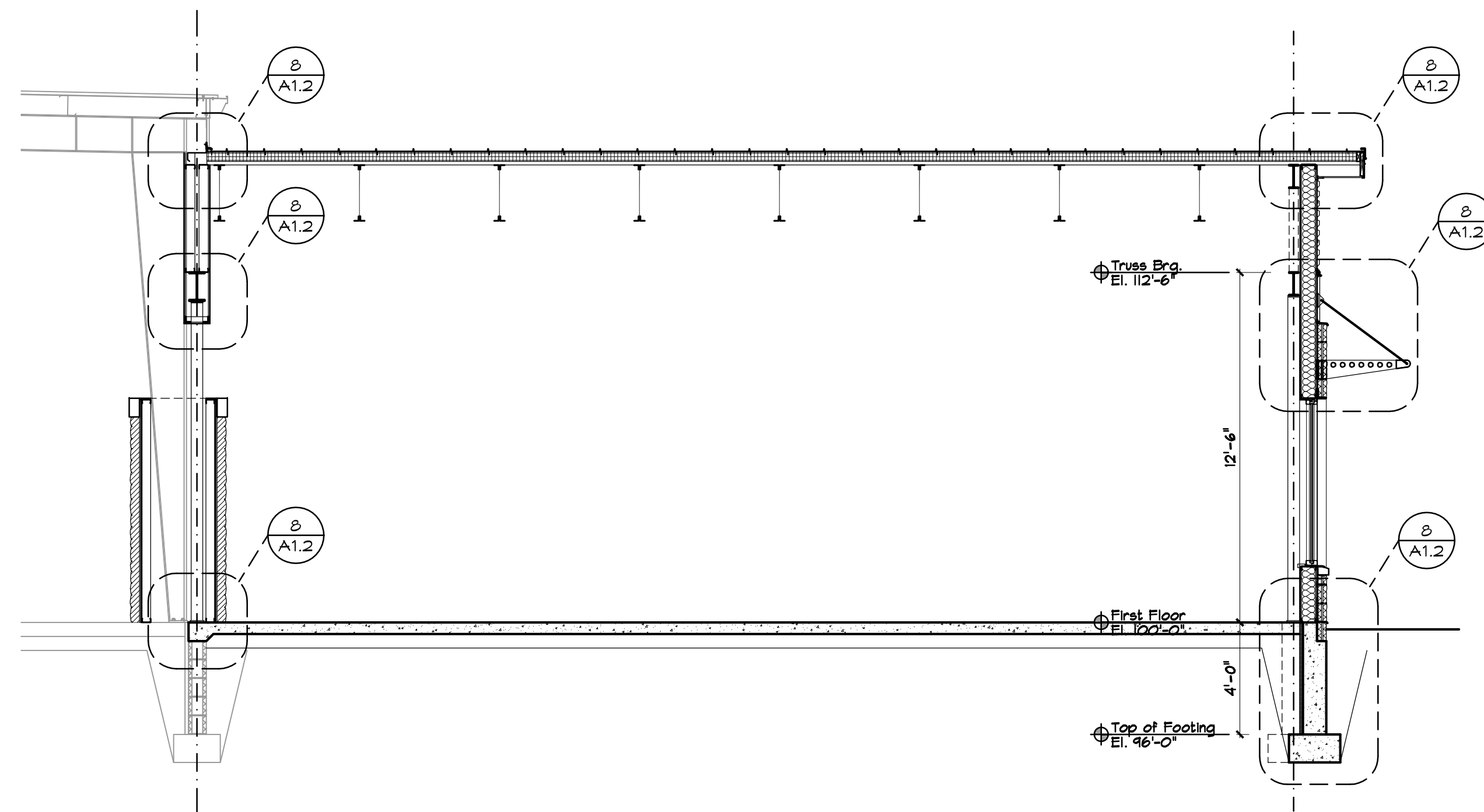
13 EAST ELEVATION
1/4" = 1'-0"



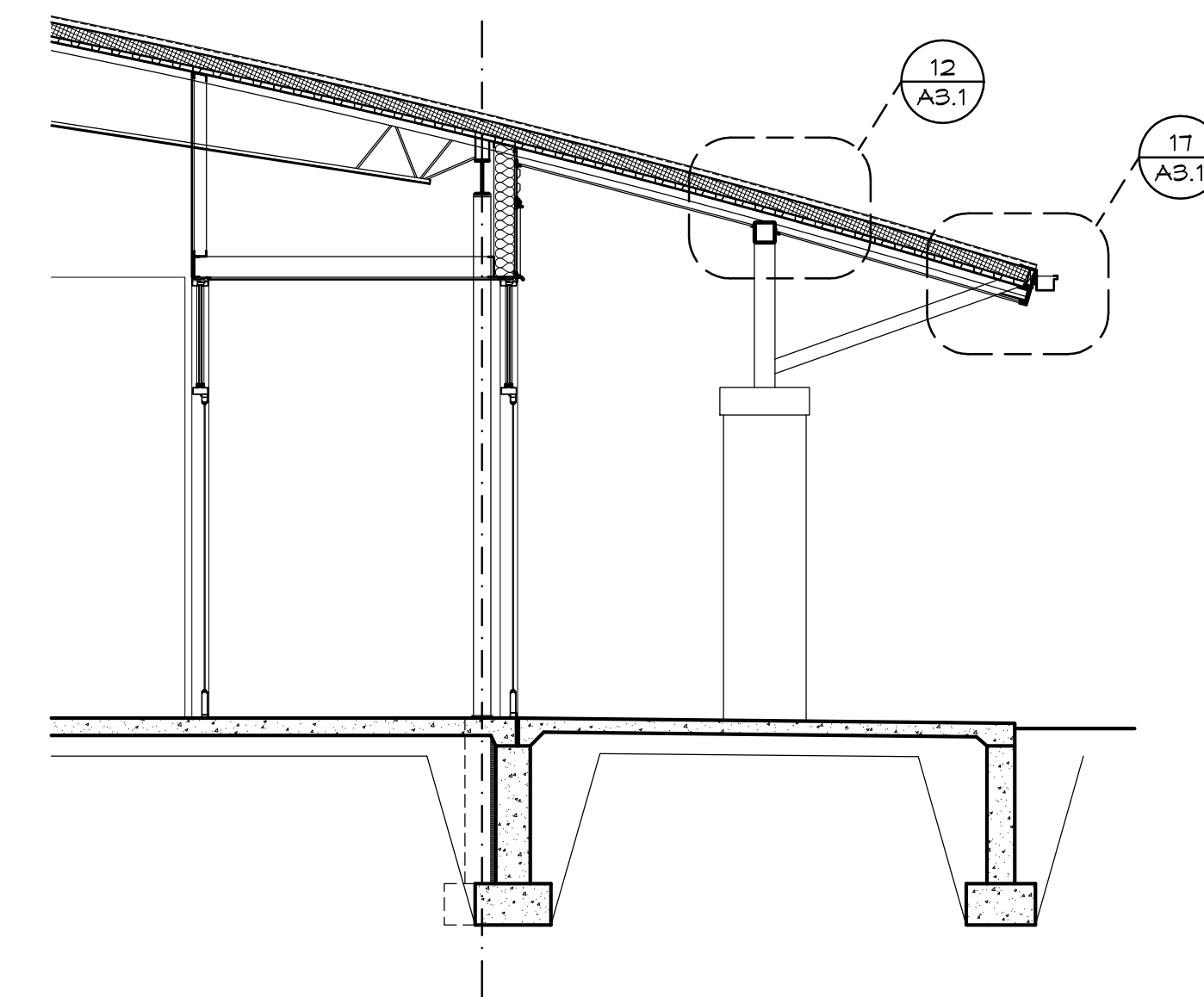
4 SOUTH ELEVATION DETAIL
1/4" = 1'-0"



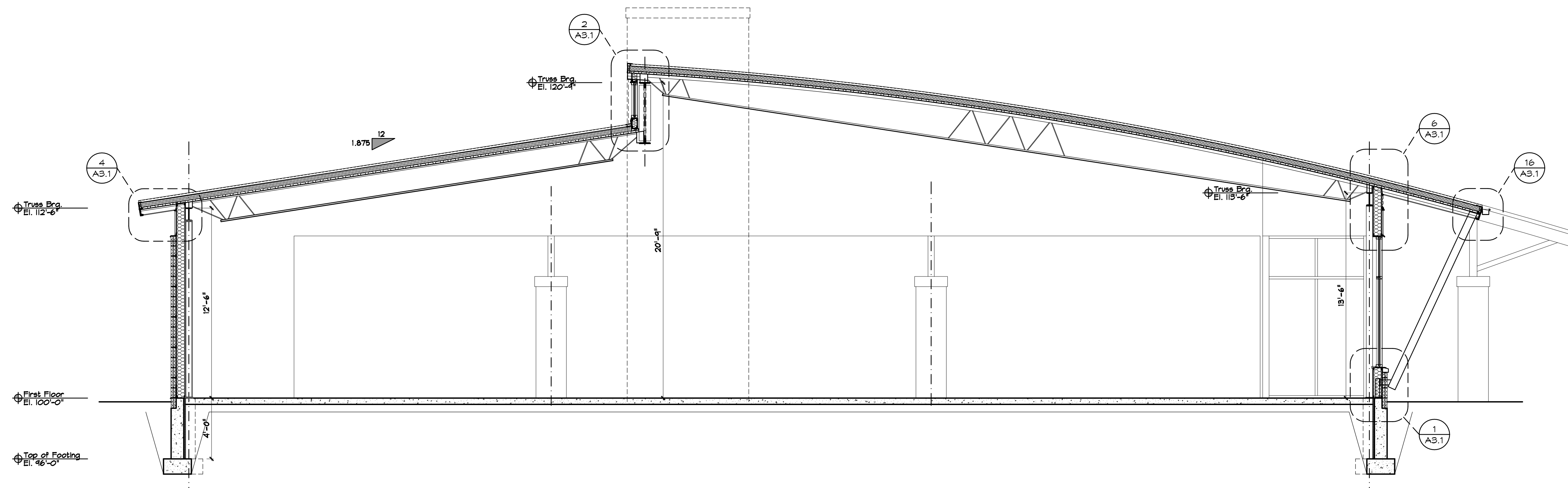
15 TOWER SECTION
1/4" = 1'-0"



14 TRANSVERSE SECTION
1/4" = 1'-0"



12 SECTION AT ENTRY
1/4" = 1'-0"



4 SECTION THROUGH ADDITION
1/4" = 1'-0"

THE CUSTOM HOUSE LLC

ARCHITECTURE UNLIMITED

RESIDENTIAL
COMMERCIAL

1506 S. 58th STREET
WEST ALLIS, WI 53214
PHONE (414) 617-0352

Action Power Sports
Alterations
202 Travis Lane
Waukesha, WI 53189

All Rights Reserved

OWNERSHIP OF DOCUMENTS

This document, and the ideas and design incorporated herein, as an instrument of professional service, is the sole property of The Custom House LLC, and is not to be used in whole or in part for any other project or purpose without the expressed written authorization of The Custom House LLC.

COPYRIGHT 2015

Sheet Contents

SECTIONS

...

Issued For:	Date:
PRELIM 1	12 Oct. 2015
PRELIM 2	16 Dec. 2015
PRELIM 3	15 Jan. 2016

Drawn By: DG
Checked By: DG

Date: 19 May, 2015
Job Number: 15.031

Sheet Number

A 3.0

THE CUSTOM HOUSE LLC

ARCHITECTURE UNLIMITED

RESIDENTIAL
COMMERCIAL

1506 S. 58th STREET
WEST ALLIS, WI 53214
PHONE (414) 617-0352

Action Power Sports
Alterations
202 Travis Lane
Waukesha, WI 53189

All Rights Reserved

OWNERSHIP OF DOCUMENTS

This document, and the ideas and design incorporated herein, as an instrument of professional service, is the sole property of The Custom House LLC, and is not to be used in whole or in part for any other project or purpose without the expressed written authorization of The Custom House LLC.

COPYRIGHT 2015

Sheet Contents

SECTIONS

..
..
..

Issued For:	Date:
PRELIM 1	12 Oct, 2015
PRELIM 2	16 Dec, 2015
PRELIM 3	15 Jan, 2016

Drawn By: DG

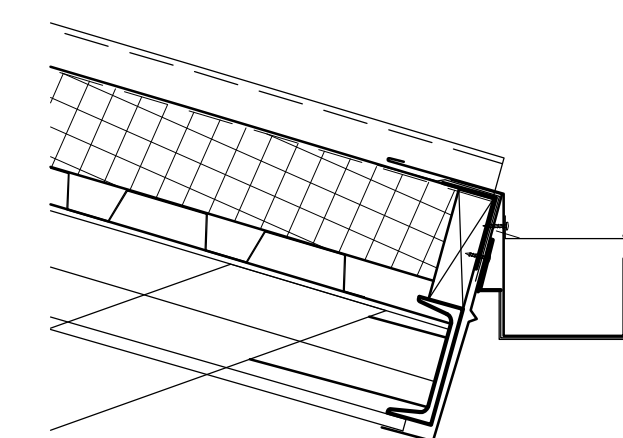
Checked By: DG

Date: 19 May, 2015

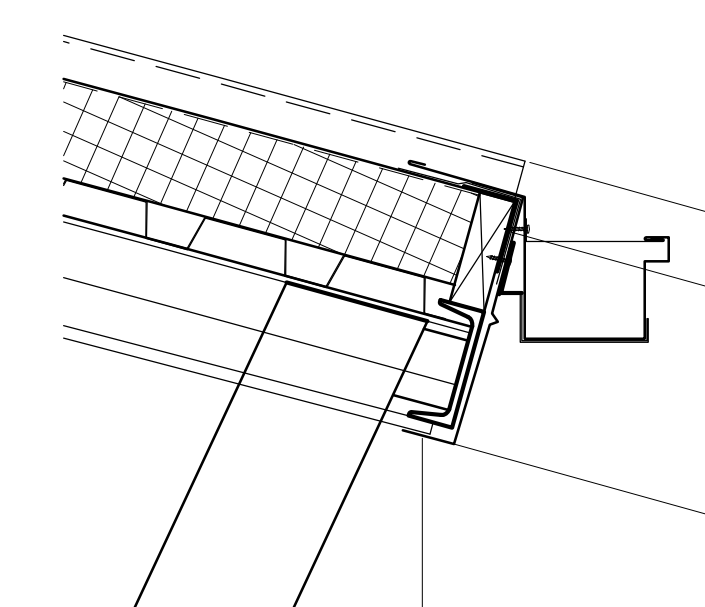
Job Number: 15.031

Sheet Number

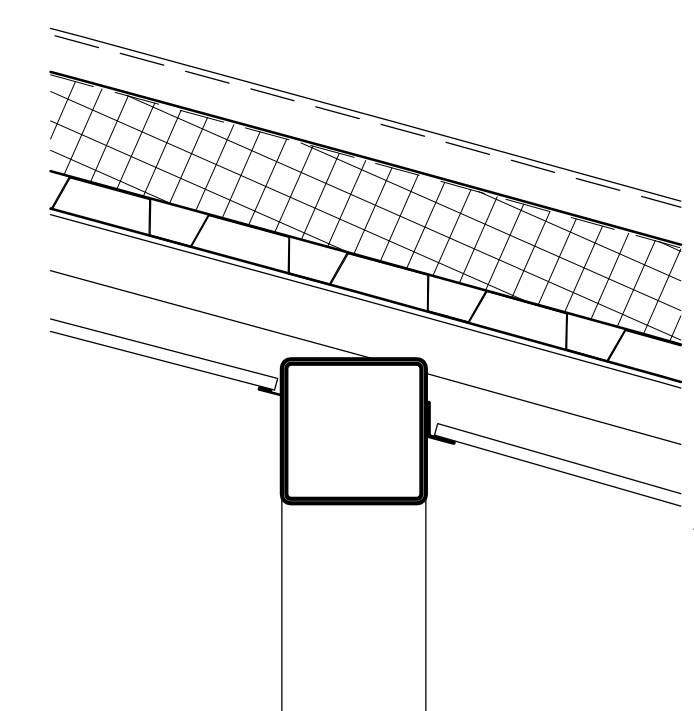
A 3.1



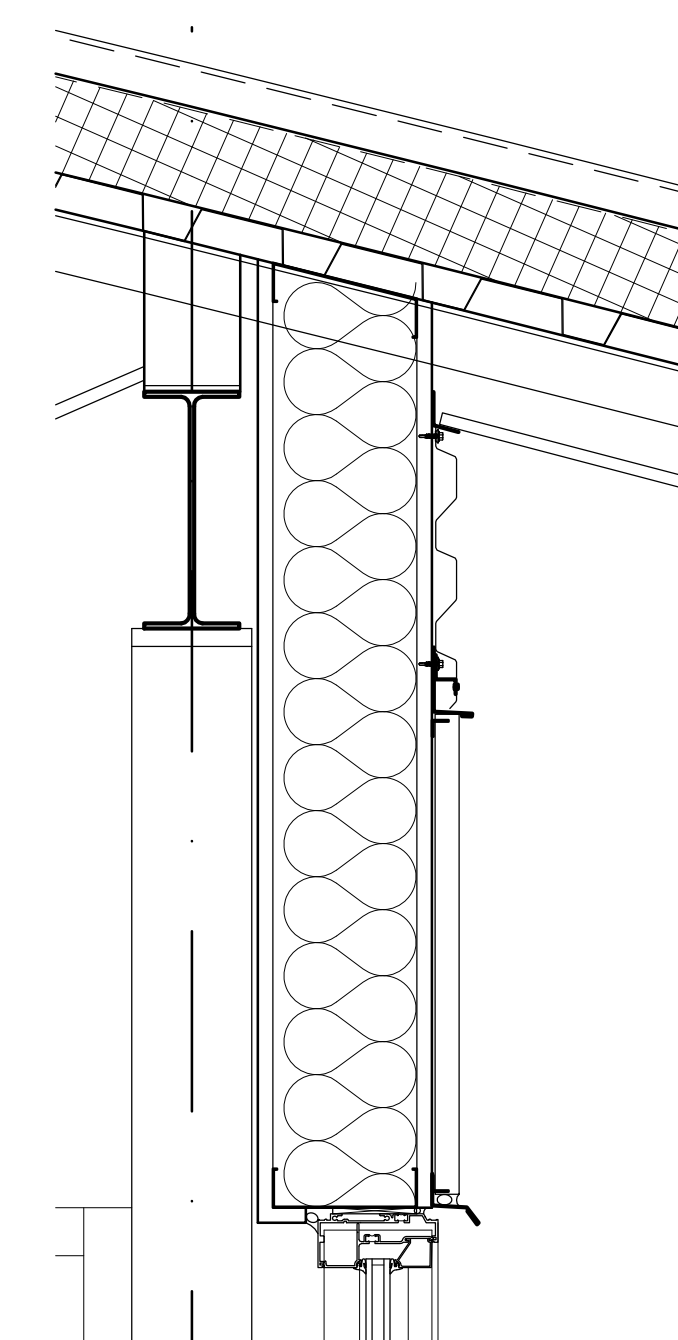
17 ENTRY ROOF EDGE DTL.
1 1/2" = 1'-0"



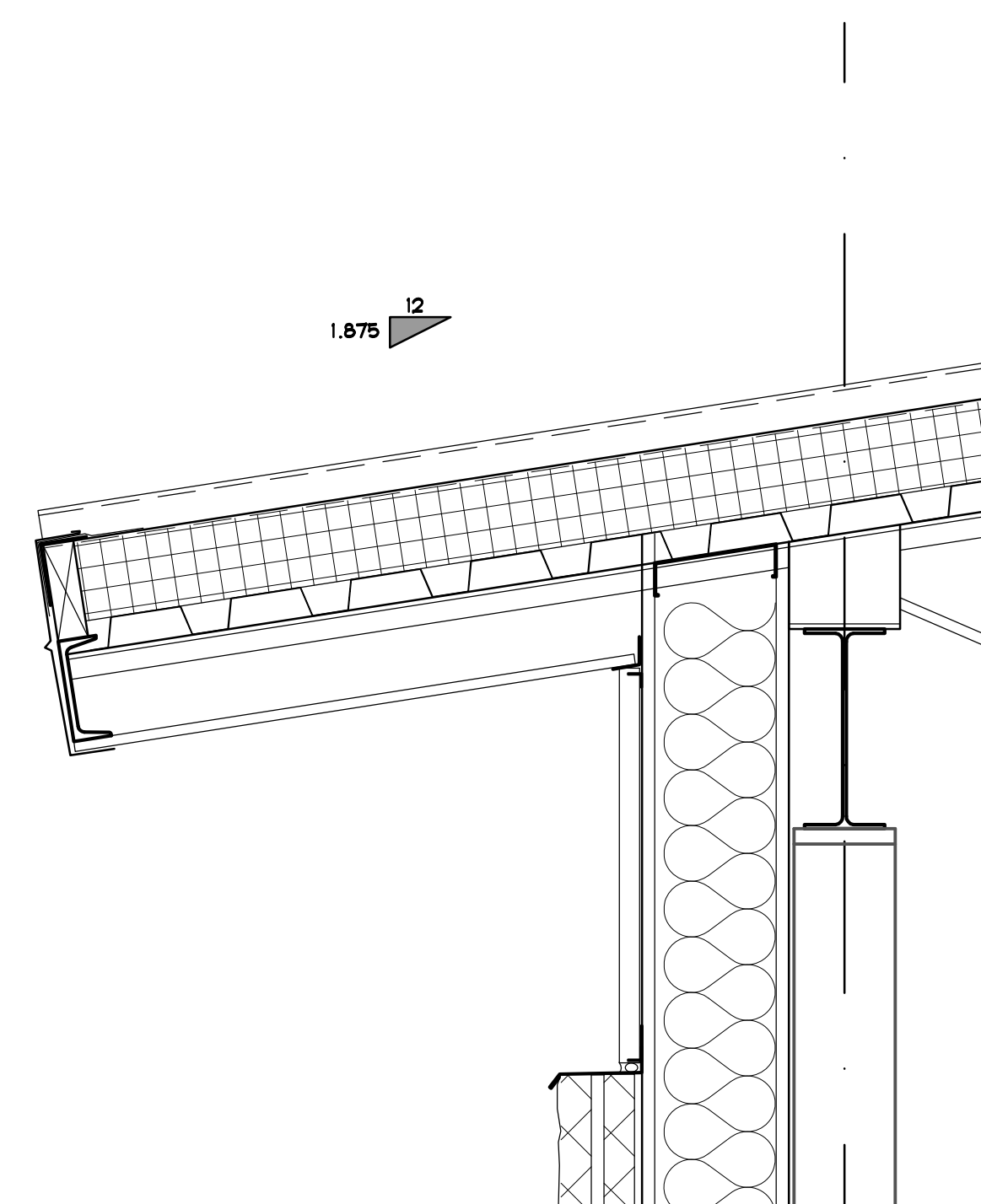
16 ROOF EDGE DETAIL
1 1/2" = 1'-0"



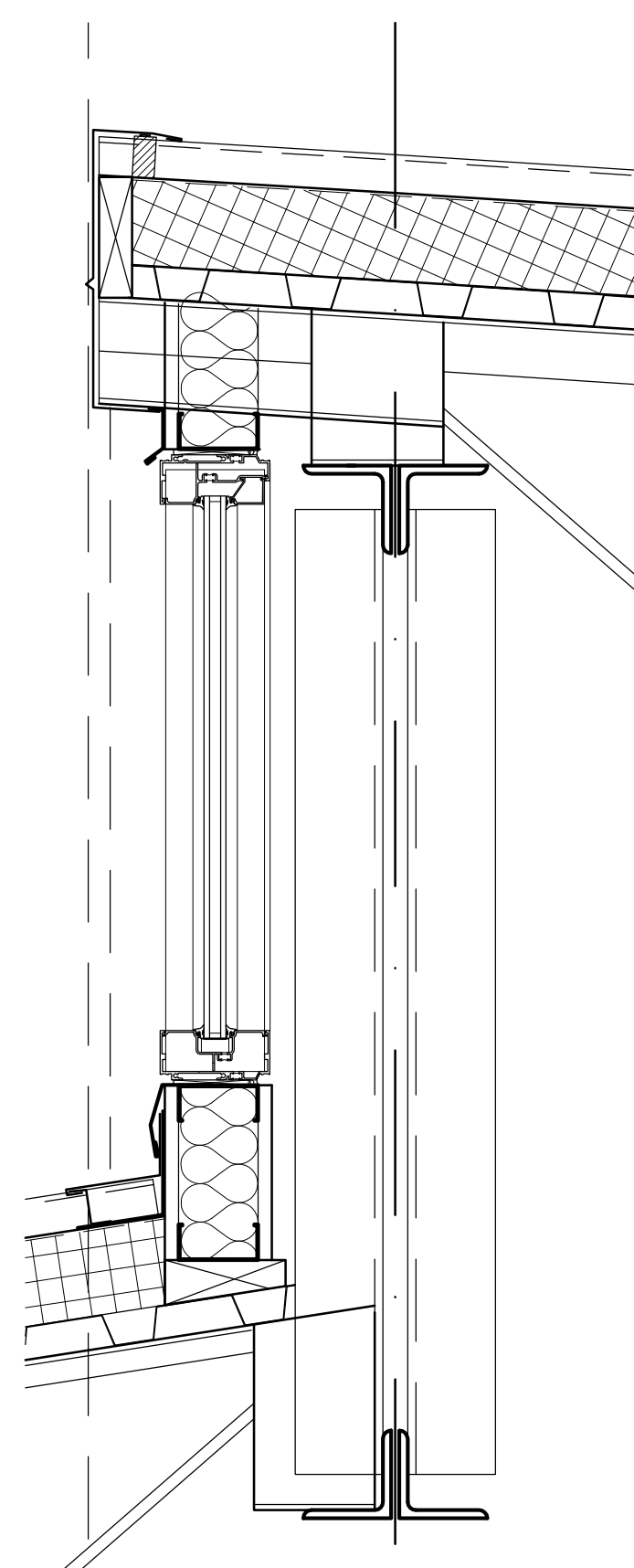
12 ENTRY ROOF DETAIL
1 1/2" = 1'-0"



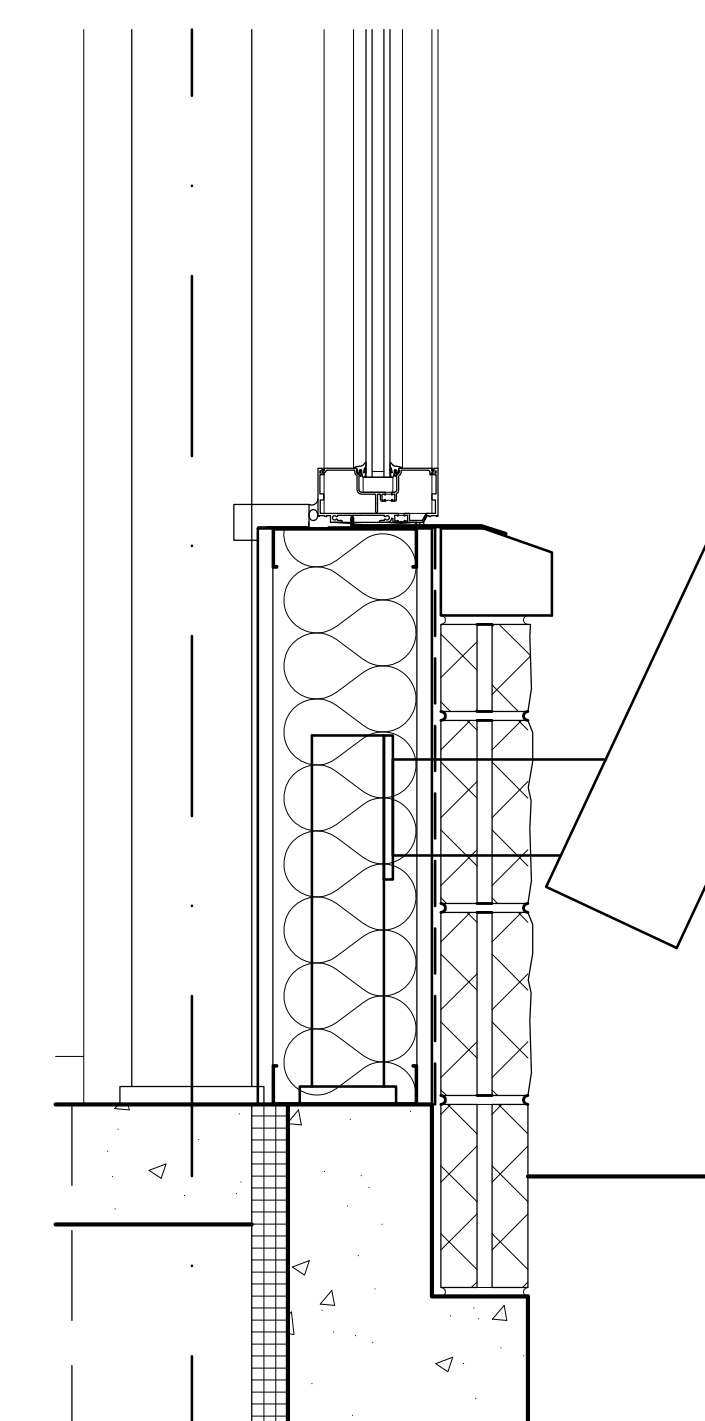
6 TRUSS BEARING DETAIL
1 1/2" = 1'-0"



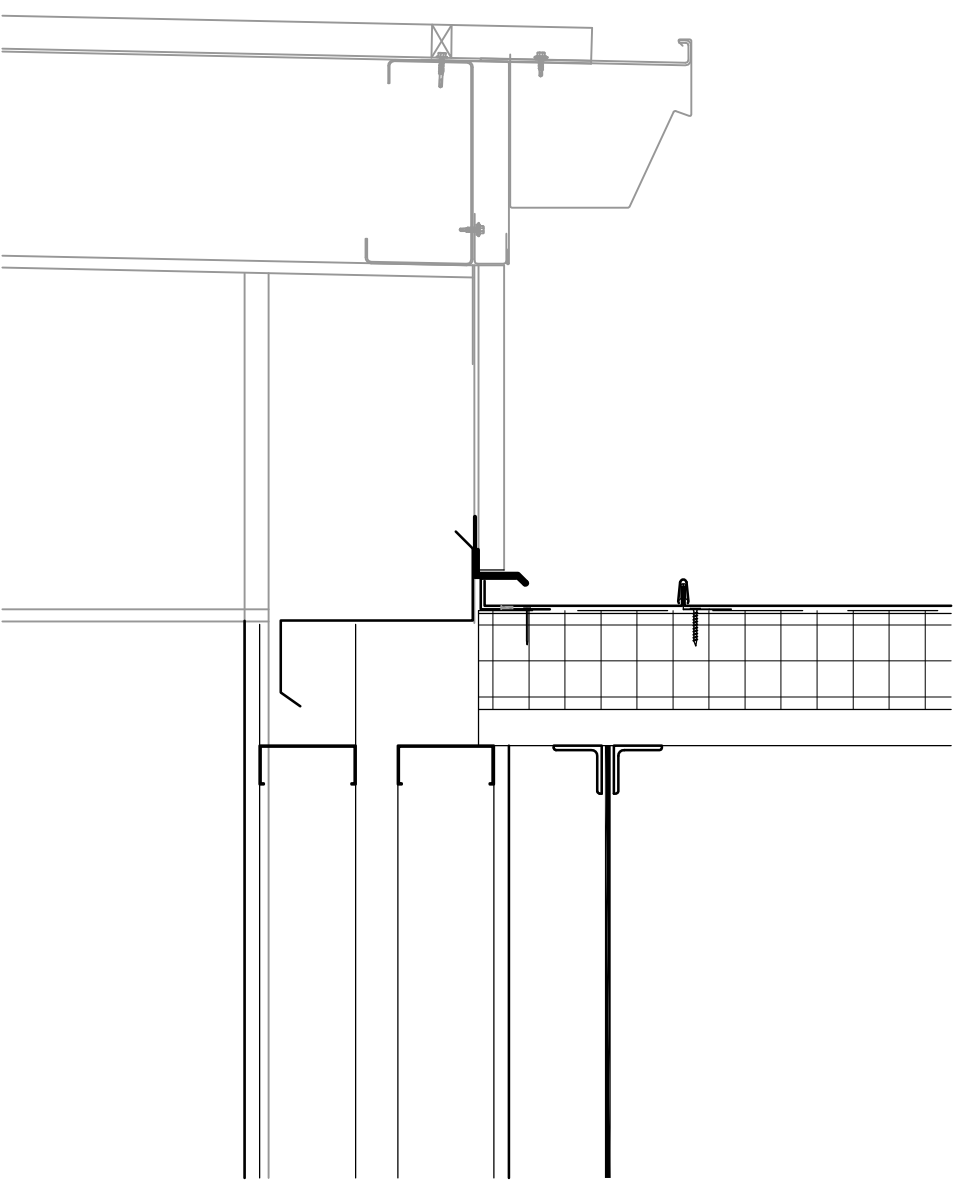
4 OVERHANG DETAIL
1 1/2" = 1'-0"



2 ROOF TRANSITION
1 1/2" = 1'-0"

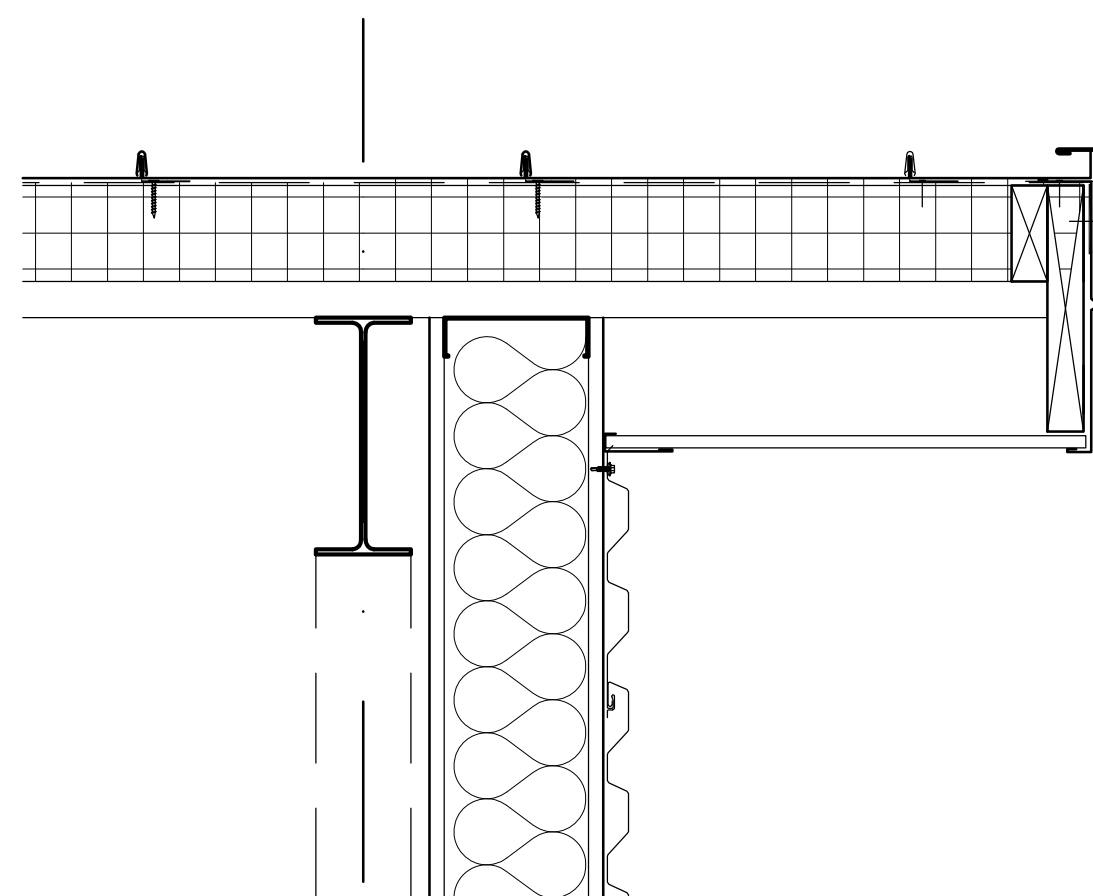


1 WALL BASE DETAIL
1 1/2" = 1'-0"



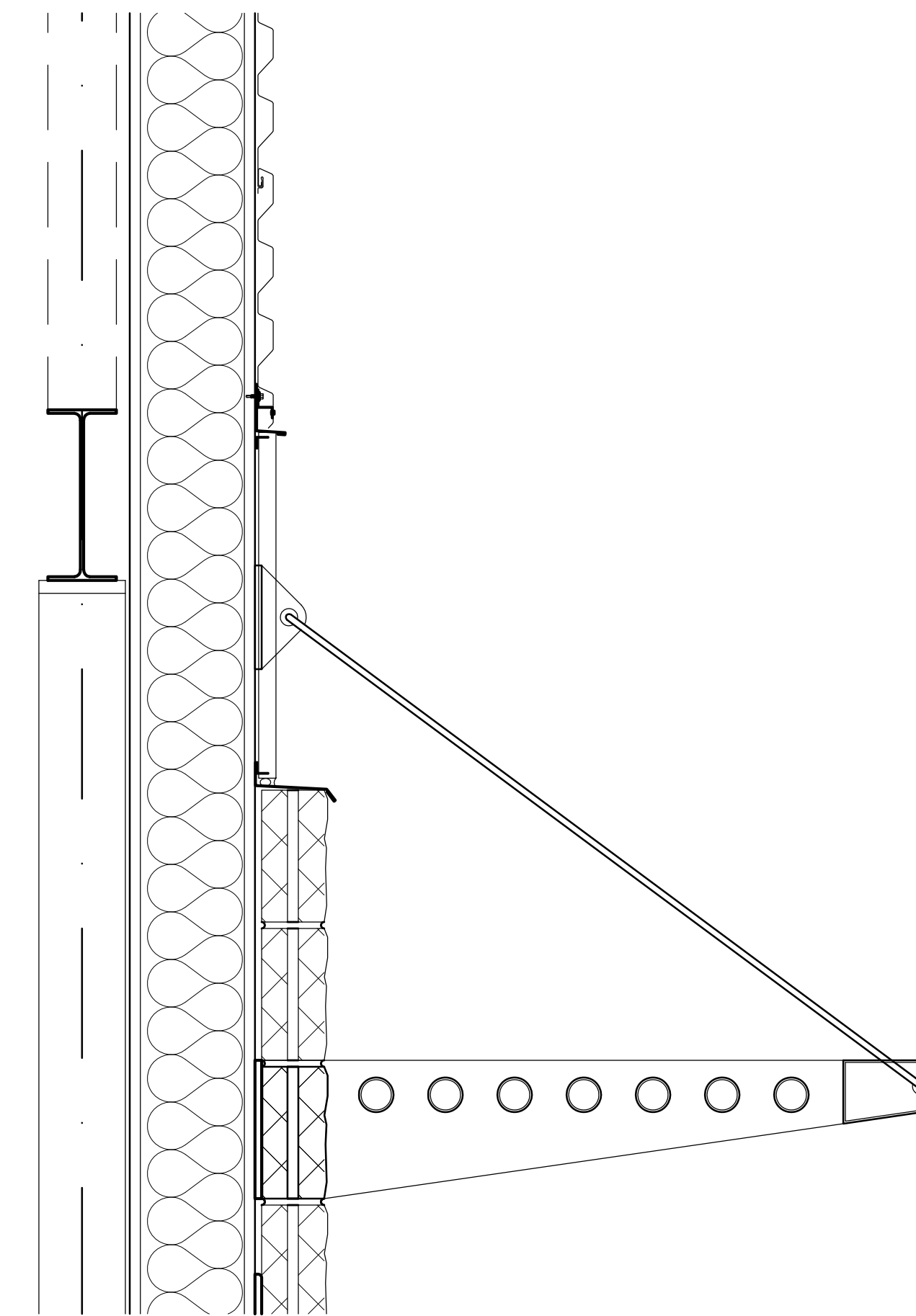
20 ROOF AT EXISTING BUILDING

1 1/2" = 1'-0"



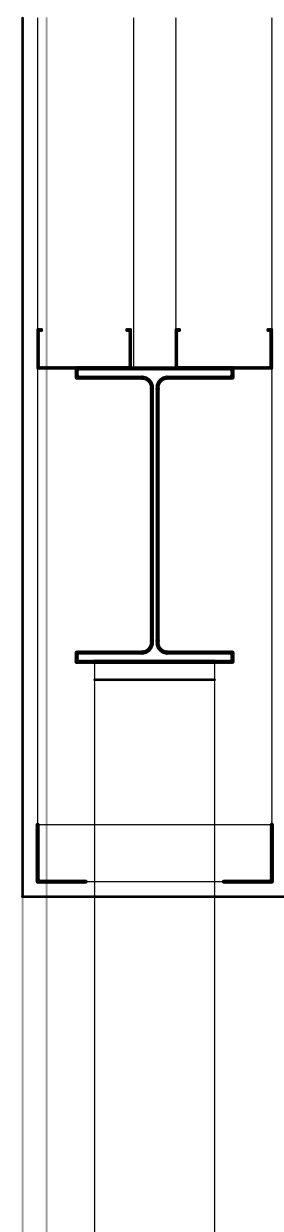
13 END WALL ROOF OVERHANG

1 1/2" = 1'-0"



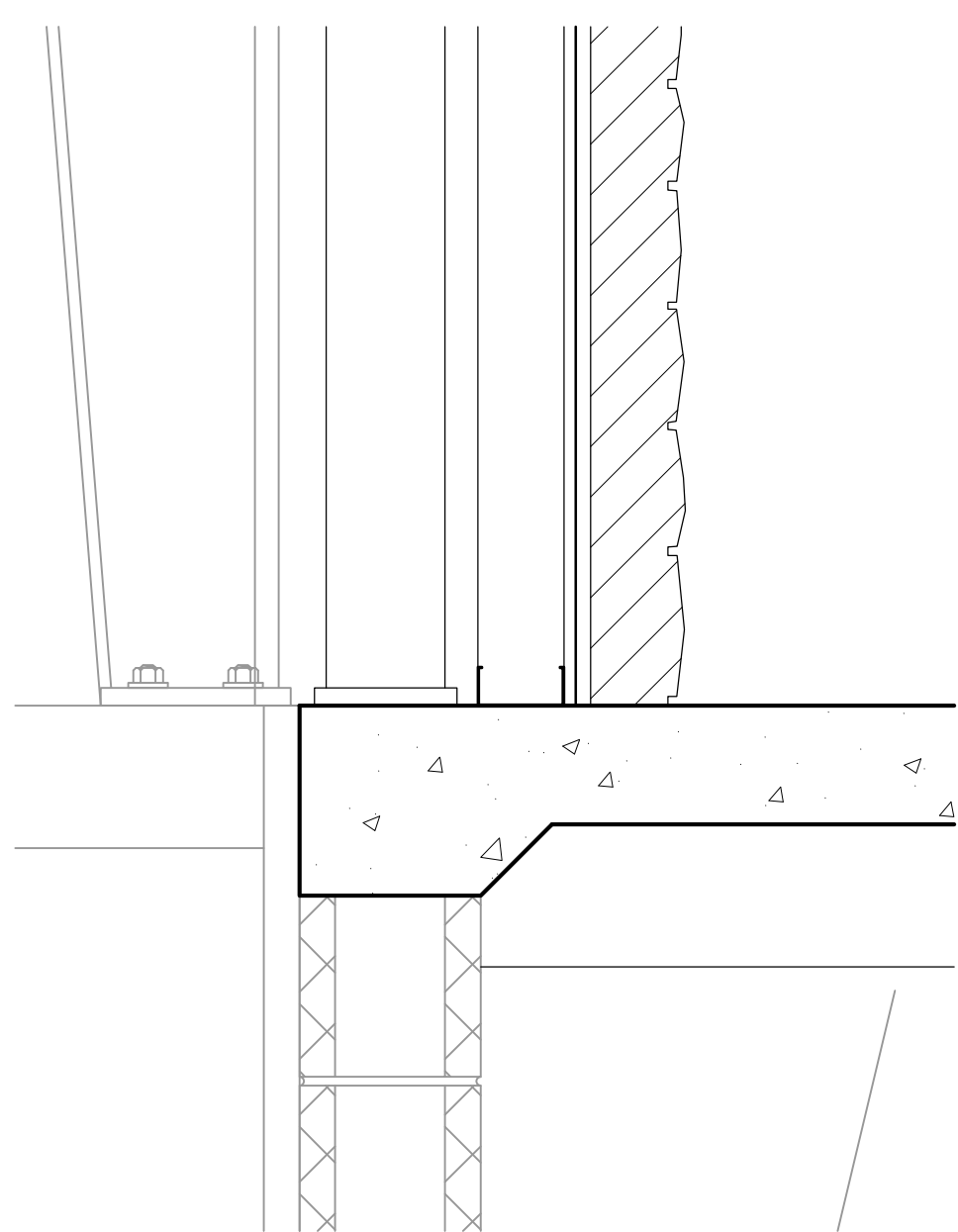
12 TRELLIS DETAIL

1 1/2" = 1'-0"



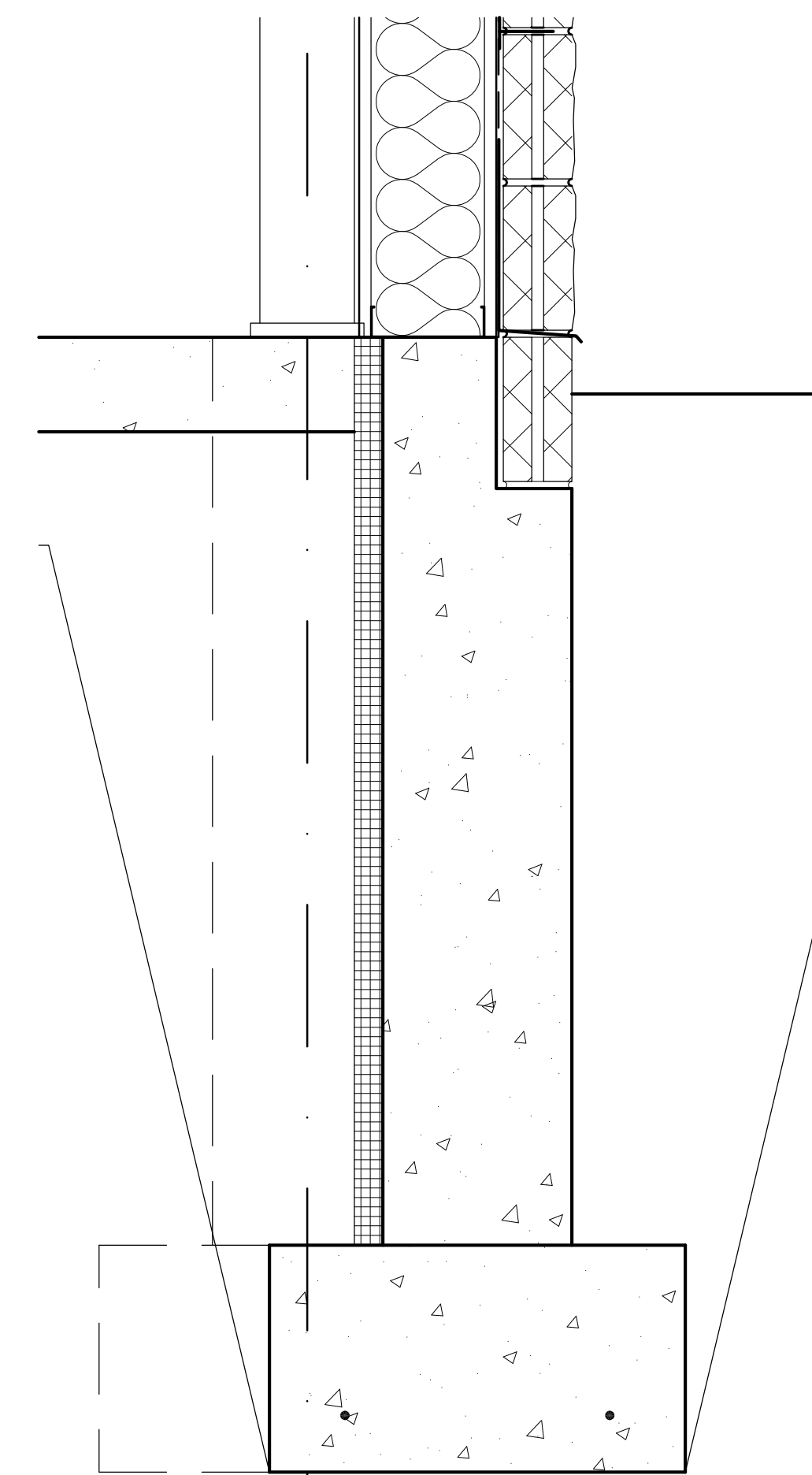
10 HEAD DETAIL

1 1/2" = 1'-0"



5 WALL BASE AT EXISTING BUILDING

1 1/2" = 1'-0"



2 WALL DETAIL

1 1/2" = 1'-0"

THE CUSTOM HOUSE LLC

ARCHITECTURE UNLIMITED

RESIDENTIAL
COMMERCIAL

1506 S. 58th STREET
WEST ALLIS, WI 53214
PHONE (414) 617-0352

Action Power Sports
Alterations
202 Travis Lane
Waukesha, WI 53189

All Rights Reserved

OWNERSHIP OF DOCUMENTS

This document, and the ideas and design incorporated herein, as an instrument of professional service, is the sole property of The Custom House LLC, and is not to be used in whole or in part for any other project or purpose without the expressed written authorization of The Custom House LLC.

COPYRIGHT 2015

Sheet Contents

SECTIONS

...

Issued For:	Date:
PRELIM 1	12 Oct. 2015
PRELIM 2	16 Dec. 2015
PRELIM 3	15 Jan. 2016

Drawn By: DG

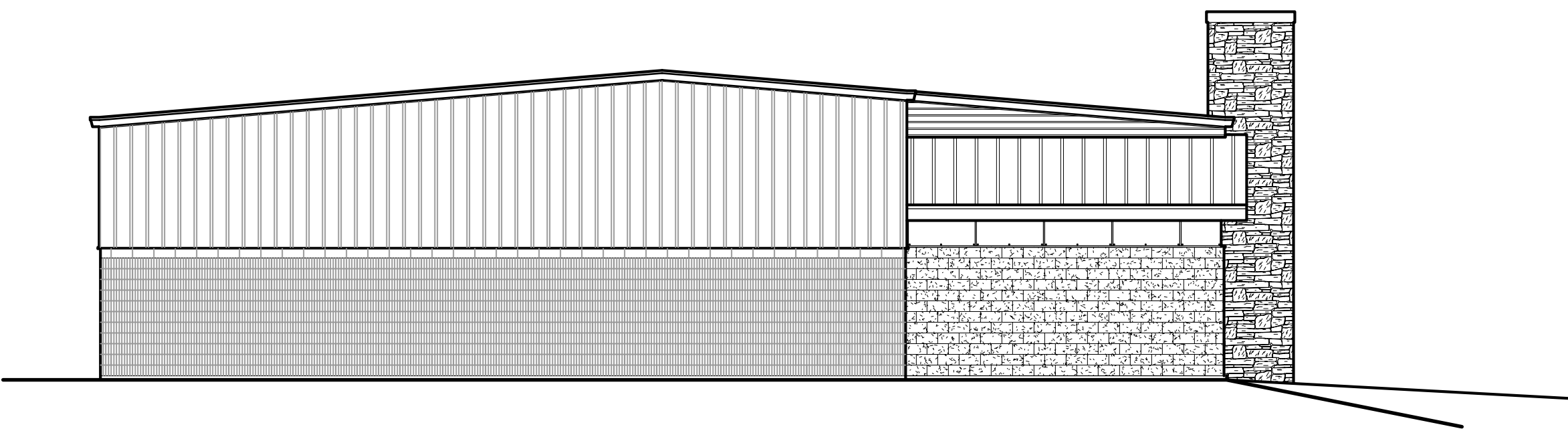
Checked By: DG

Date: 19 May, 2015

Job Number: 15.031

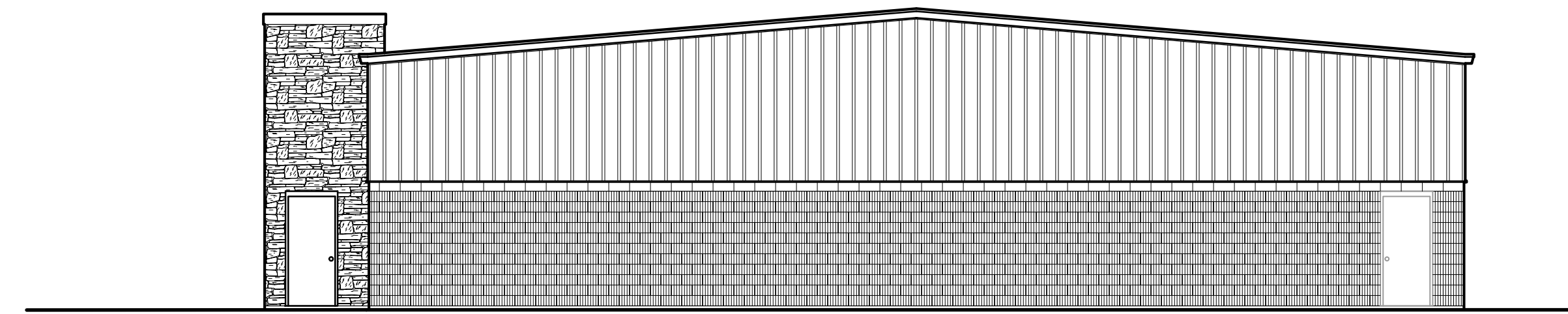
Sheet Number

A 3.2



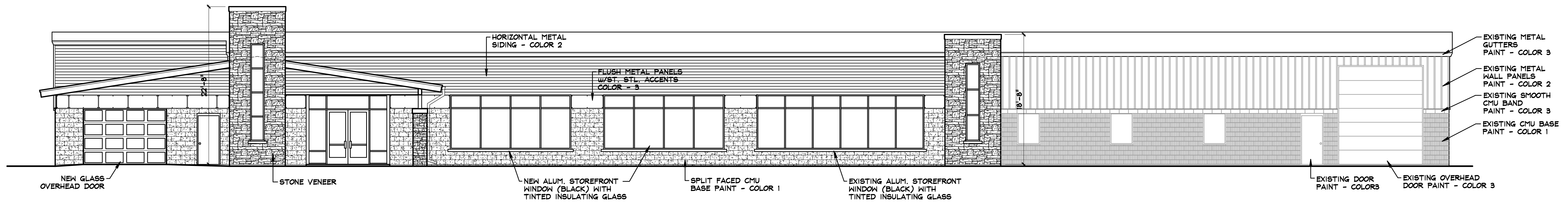
3 PROPOSED NORTH ELEVATION

1/8" = 1'-0"



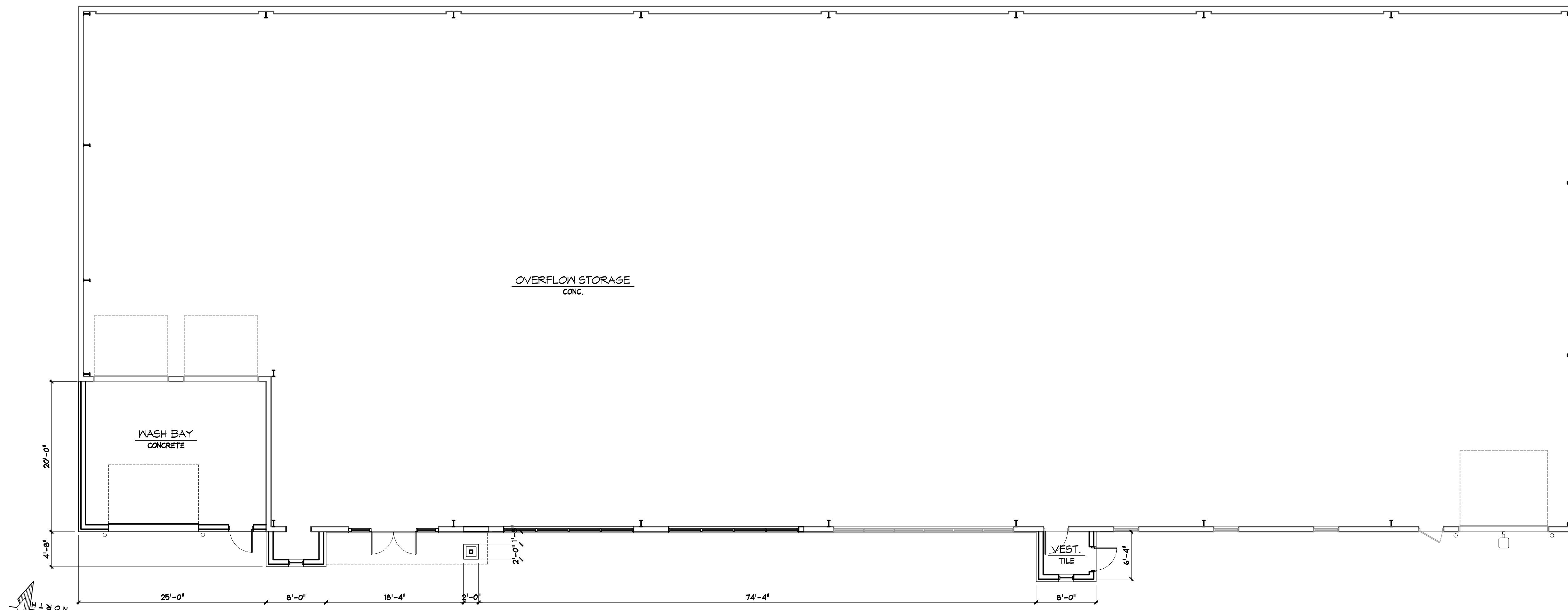
4 PROPOSED SOUTH ELEVATION

1/8" = 1'-0"



2 PROPOSED WEST ELEVATION

1/8" = 1'-0"



1 PROPOSED FLOOR PLAN

1/8" = 1'-0"

THE CUSTOM HOUSE LLC

ARCHITECTURE UNLIMITED

RESIDENTIAL
COMMERCIAL

1506 S. 58th STREET
WEST ALLIS, WI 53214
PHONE (414) 617-0352

Action Power Sports
Alterations
202 Travis Lane
Waukesha, WI 53189

All Rights Reserved

OWNERSHIP OF DOCUMENTS

This document, and the ideas and design incorporated herein, as an instrument of professional service, is the sole property of The Custom House LLC, and is not to be used in whole or in part for any other project or purpose without the expressed written authorization of The Custom House LLC.

COPYRIGHT 2015

Sheet Contents

PHASE 2 BUILDING

Issued For:	Date:
PRELIM 1	12 Oct, 2015
PRELIM 2	16 Dec, 2015
PRELIM 3	15 Jan, 2016

Drawn By: DG

Checked By: DG

Date: 19 May, 2015

Job Number: 15.031

Sheet Number

A 4.0