

Project:

## SOFT WATER INC.

Corporate Drive  
Waukesha, WI 53189

Issuance and Revisions:

Date	Number	Description
03/26/18		Client Review Submittal
03/27/18		Plan Commission Submittal
05/02/18		Revisions Based on Plan Commission Comments

COPYRIGHT InSite Landscape Design Inc. 2018  
ALL RIGHTS RESERVED  
THIS DRAWING IS NOT TO BE REPRODUCED, CHANGED, COPIED OR ASSIGNED TO ANY THIRD PARTY IN ANY FORM OR MANNER WITHOUT FIRST OBTAINING THE EXPRESSED WRITTEN PERMISSION OF InSite Landscape Design, Inc. THE CLIENT AGREES TO INDEMNIFY AND HOLD THE LANDSCAPE ARCHITECT HARMLESS FROM ANY DAMAGES, LIABILITY, OR COST, INCLUDING ATTORNEYS FEES AND COSTS OF DEFENSE ARISING FROM ANY CHANGES OR ALTERATIONS MADE BY ANYONE OTHER THAN THE LANDSCAPE ARCHITECT, OR FROM ANY REUSE OF THE DRAWINGS OR DATA WITHOUT THE PRIOR WRITTEN CONSENT OF THE LANDSCAPE ARCHITECT.

Sheet Title:

PROPOSED PARTIAL  
LANDSCAPE PLAN,  
AND PLANT MATERIAL TABLE

Date of Drawing: 05/02/18

Scale: 1" = 20'-0"

Drawn By: MCD

Job Number: L18-032

Sheet Number:

# LSP1.2

Proposed Plant Material Table LSP1.2

Quantity	Code Name	Symbol	Scientific Name	Common Name	Planting Size	Comments
2	BeniH		Betula Nigra 'Heritage'	Heritage River Birch	10' - 12' - Clump B&B	2
1	Cabf		Carpinus betulis 'Fastigiata'	Pyramidal EuropeanHornbeam	3'-Cal - B&B	
3	GibPS		Ginkgo biloba 'Princeton Sentry'	Princeton Sentry Maidenhair Tree	3'-Cal - B&B	1
2	MaAk		Malus 'Adirondack'	Adirondack Flowering Crab	1 1/2' Cal - B&B	
2	PycaC		Pyrus calleryana 'Chanticleer'	Chanticleer Pear	3'-Cal - B&B	

Quantity	Code Name	Symbol	Scientific Name	Common Name	Planting Size	Comments
6	JuscM		Juniperus scopulorum 'Moonglow'	Moonglow Juniper	5' - 6' - B&B	

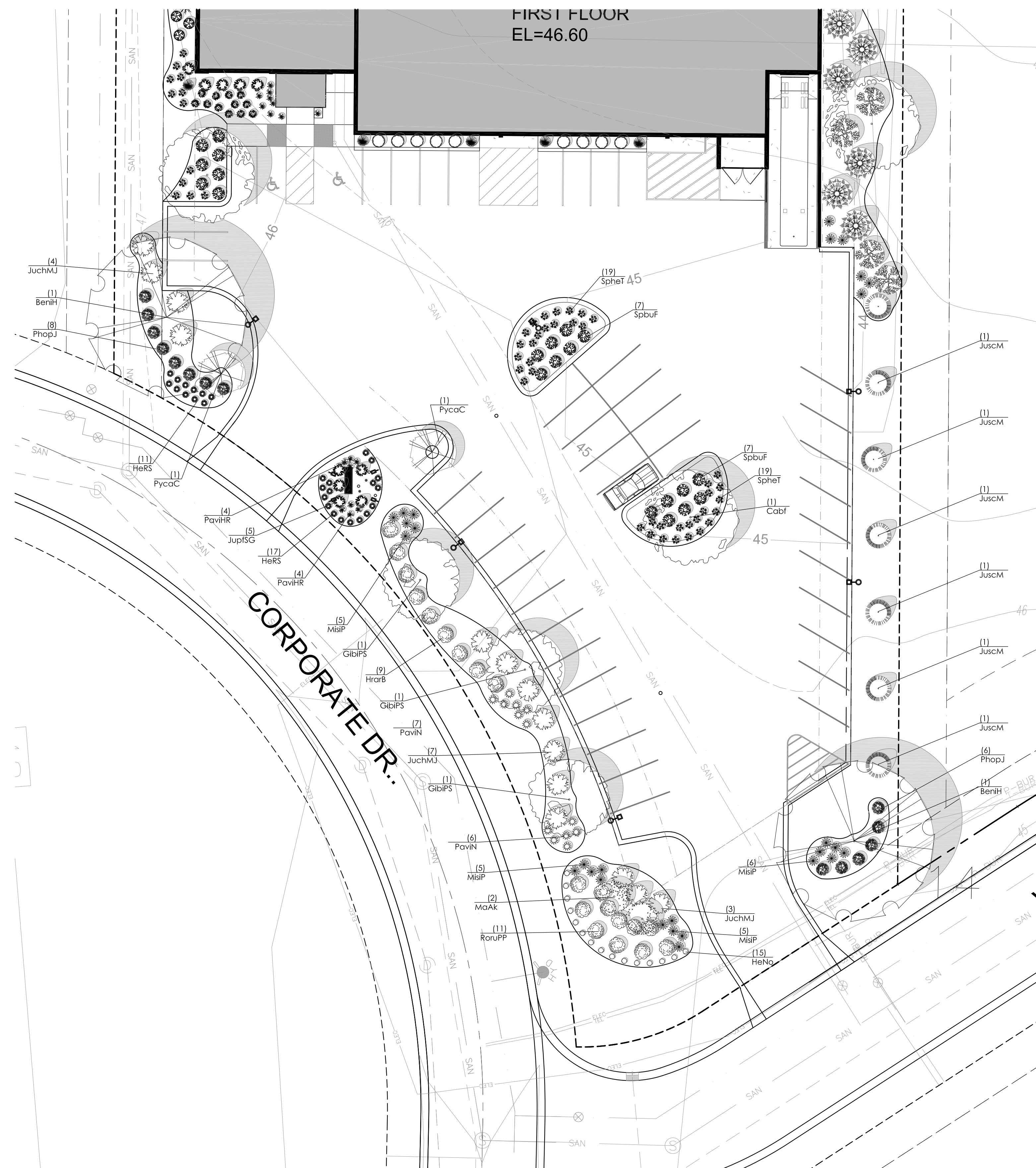
Quantity	Code Name	Symbol	Scientific Name	Common Name	Planting Size	Comments
9	HraB		Hydrangea arborescens NCHA4'	Incredible Blush Smooth Hydrangea	18" - 24" - Cont	
14	PhopJ		Physocarpus opulifolius 'Jefam'	First Editions Amber Jubilee Ninebark	18" - 24" - Cont	
11	RoruPP		Rosa rugosa 'Purple Pavement'	Purple Pavement Rose	18" - 24" - Cont	
14	SpbuF		Spiraea x bumalda 'Froebelli'	Froebelli Spirea	18" - Cont	

Quantity	Code Name	Symbol	Scientific Name	Common Name	Planting Size	Comments
14	JuchMJ		Juniperus chinensis 'Mint Julep'	Mint Julep Juniper	18" - 24" - B&B	
5	JupfSG		Juniperus x pfitzeriana 'MonSan'	Sea of Gold Juniper	18" - 24" - B&B	

Quantity	Code Name	Symbol	Scientific Name	Common Name	Planting Size	Comments
22	MisIP		Miscanthus sinensis 'Purpuracens'	Purple Silver Grass	1-Gal - Cont	
8	PaviHR		Panicum virgatum 'Hot Rod'	Hot Rod Switch Grass	1-Gal - Cont	
13	PaviN		Panicum virgatum 'Northwind'	Northwind Switch Grass	1-Gal - Cont	
38	SpheT		Sporobolus heterolepis 'Tara'	Tara Prairie Dropseed	1-Gal - Cont	

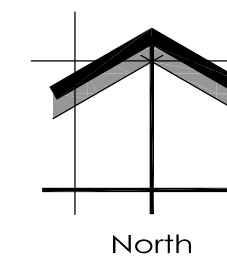
Quantity	Code Name	Symbol	Scientific Name	Common Name	Planting Size	Comments
15	HeNo		Hemerocallis x 'Nosferatu'	Trophytaker Nosferatu Daylily	4 1/2" pot	
28	HeRS		Hemerocallis x 'Ruby Spider'	Ruby Spider Daylily	4 1/2" pot	

- Comments
1. Male Only
  2. Multi-stem (3) Specimen Clump



1 PROPOSED PARTIAL LANDSCAPE PLAN

SCALE: 1" = 20'-0"



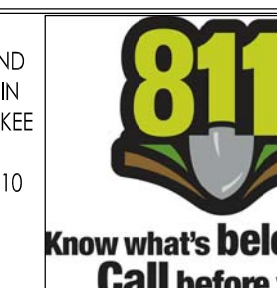
TO OBTAIN LOCATION OF PARTICIPANTS UNDERGROUND FACILITIES BEFORE YOU DIG IN WISCONSIN

## DIGGERS HOT LINE

WISCONSIN STATUTE 182.0175 (1974) REQUIRES A MINIMUM OF 3 DAYS NOTICE BEFORE YOU EXCAVATE (NOT INCLUDING SATURDAY, SUNDAY OR LEGAL HOLIDAYS)

UNDERGROUND SEWER AND UTILITY INFORMATION AS SHOWN IS OBTAINED FROM THE RECORDS OF MUNICIPALITY AND LOCAL UTILITY COMPANIES. THE ACCURACY OF WHICH CAN NOT BE GUARANTEED OR CERTIFIED TO.  
THE LOCATIONS OF EXISTING UTILITY INSTALLATIONS AS SHOWN ON THIS SURVEY ARE APPROXIMATE. THERE MAY BE OTHER UNDERGROUND UTILITY INSTALLATIONS WITHIN THE PROJECT AREA THAT ARE NOT SHOWN.

TO OBTAIN LOCATION OF PARTICIPANTS UNDERGROUND FACILITIES BEFORE YOU DIG IN WISCONSIN CALL THE MILWAUKEE UTILITY ALERT NETWORK  
(800)-242-8511, (262) 432-7910  
(877) 500-9592  
www.DiggersHotline.com  
OR



NOT FOR CONSTRUCTION - PRELIMINARY - FOR ESTIMATING AND REVIEW ONLY - DO NOT SCALE THESE DRAWINGS - These documents reflect progress & intent & may be subject to change, including additional notes and detail. These are not final construction documents and should not be used for final bidding or construction-related purposes.

L18-032 - SOFT WATER, INC. - 05/02/2018