

1 FLOOR PLAN
A-101 SCALE: 1/4" = 1'-0"

FLOOR PLAN GENERAL NOTES:

- ALL INTERIOR FINISHES TO BE PROVIDED BY INTERIOR DESIGNER - BY OTHERS.
- DECORATIVE MATERIALS SHALL BE FLAME RETARDANT.
- EXITS, EXIT LIGHTS, FIRE ALARM STATIONS, HOSE CABINETS, AND EXTINGUISHER LOCATIONS SHALL NOT BE CONCEALED BY DECORATIVE MATERIAL.
- DIMENSIONS ON PLAN ARE NOMINAL. GENERAL CONTRACTOR TO FIELD VERIFY ALL DIMENSIONS.
- 5% OF DINING ROOM SEATING IS REQUIRED TO BE ACCESSIBLE AND SHALL BE EVENLY DISPERSED.
- SUPPLIER INFORMATION FOR McDONALD'S ACCESSIBILITY SIGN PACKAGE:
FORREST PERMA-SIGNS, 92 FIRST STREET
P.O. BOX 588
NEW ROCHELLE, NY 10802
ATTN: TOM GIORDANO
OFFICE: 900-214-8765
DIRECT: 914-432-9892
FAX: 914-432-7416

(X) = SEE SHEET A-402 FOR DOOR SCHEDULE.

FLOOR PLAN ACCESSIBILITY KEYED NOTES:

THE FOLLOWING ACCESSIBILITY KEYED NOTES ARE ENCLOSED WITH A (A) SYMBOL ON THE FLOOR PLAN.

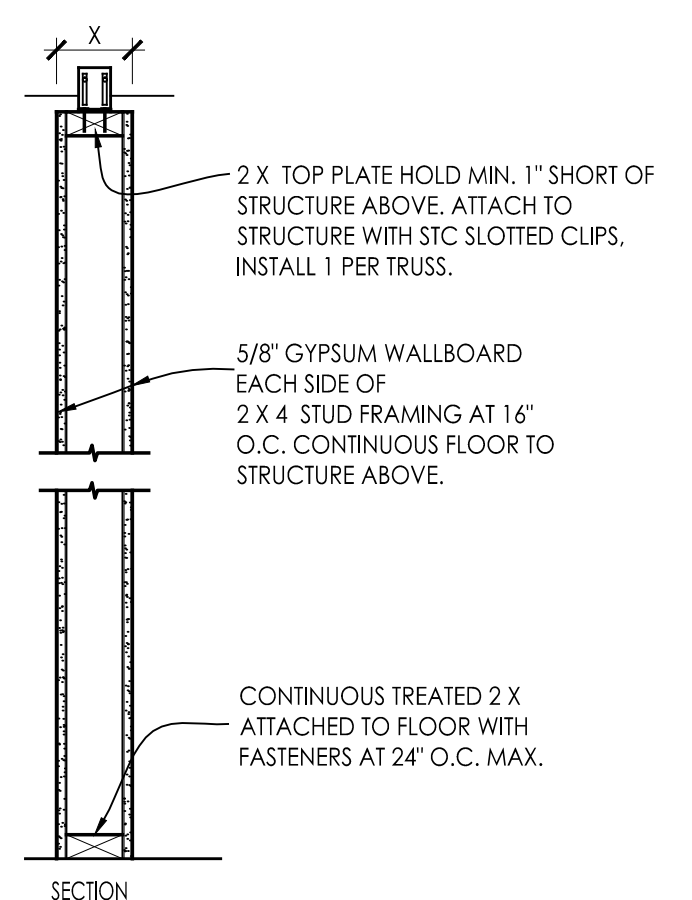
- ADD "SPEECH / HEARING IMPAIRED ASSISTANCE AVAILABLE" SIGNAGE TO CASH AND PRESENTER DRIVE-THRU WINDOWS.
- ADD STAFF ASSISTANCE SIGNAGE TO SELF-SERVICE AREA.
- 5% OF DINING ROOM SEATING IS REQUIRED TO BE ACCESSIBLE AND SHALL BE EVENLY DISPERSED.
- ADD BRAILLE & PICTURE MENU SIGNAGE TO A LOCATION VISIBLE NEAR FRONT COUNTER.

FLOOR PLAN KEYED NOTES:

THE FOLLOWING FLOOR PLAN KEYED NOTES ARE ENCLOSED WITH A (1) SYMBOL ON THE FLOOR PLAN.

- NEW BRAND WALL. SEE SECTION X/A-30X FOR MORE INFORMATION ON FRAMING AND MATERIALS.
- NEW EXTERIOR MASONRY WALL PER SECTION X/A-30X.
- EXTERIOR WALL INFILL: (EXTERIOR TO INTERIOR) XXXXXXXXXXXXXXXXXXXXX.
- NEW INTERIOR WALL CONSTRUCTION. REFER TO PARTITION TYPE DETAILS ON THIS SHEET FOR MORE INFORMATION.
- MASONRY OPENING TO BE PATCHED WITH MATERIALS TO MATCH EXISTING WALL CONSTRUCTION. REMOVE EXISTING ROW LOCK.
- NEW FLOOR TILE. SEE INTERIOR DRAWINGS FOR MORE INFORMATION. REFER TO DETAIL X/A-50X FOR MORE INFORMATION ON INSTALLATION AND CONTROL JOINTS.
- NEW MODULAR SPLIT DUAL POINT FRONT COUNTER SYSTEM. REFER TO INTERIOR DESIGN DRAWINGS FOR MORE INFORMATION. COUNTER SYSTEM SHOWN ON PLAN IS REPRESENTATIVE AND MAY NOT REFLECT THE EXACT UNITS CHOSEN BY INTERIOR DESIGNER. INTERIOR DESIGN DRAWINGS DICATATE OVER THIS FLOOR PLAN. REFER TO ELECTRICAL SHEETS FOR ELECTRICAL CONNECTION INFORMATION.

- NEW STAINLESS STEEL HAND RAIL. SEE FLOOR PLAN FOR LENGTH OF RAILING AND REQUIRED CLEARANCES. FOR GUARD RAIL DETAIL SEE X/SD-X.
- NEW EXTERIOR GLAZING: 1" CLEAR LOW-E INSULATED GLASS. FRAMES TO BE THERMALLY BROKEN. COLOR TO BE DARK BRONZE ANODIZED ALUMINUM. LOCATION OF TEMPERED GLASS PER EXTERIOR ELEVATIONS.
- NEW INTERIOR GLAZING: 1/4" CLEAR INSULATED GLASS. FRAMES TO BE THERMALLY BROKEN. COLOR TO BE DARK BRONZE ANODIZED ALUMINUM. (PROVIDE TEMPERED GLASS WHERE SILL HEIGHT IS LESS THAN 24" A.F.F)
- NEW 24" X 24" MOP SINK.
- NEW 10' SSB. RELOCATE EXISTING EQUIPMENT AND DISPENSERS TO NEW SSB.
- POSTING OF OCCUPANT LOAD: OCCUPANT LOAD = XXX (SEE COVER SHEET). EVERY ROOM OR SPACE THAT IS AN ASSEMBLY OCCUPANCY SHALL HAVE THE OCCUPANT LOAD OF THE ROOM OR SPACE POSTED IN A CONSPICUOUS PLACE. NEAR THE MAIN EXIT OR EXIT ACCESS DOORWAY FROM THE ROOM OR SPACE. POSTED SIGNS SHALL BE OF AN APPROVED LEGIBLE PERMANENT DESIGN AND SHALL BE MAINTAINED BY THE OWNER OR AUTHORIZED AGENT.
- NEW TWO SIDED ORDER KIOSKS. SEE ELECTRICAL SHEETS FOR CONNECTION INFORMATION.
- NEW EXTERIOR GLAZING: 1" CLEAR LOW-E INSULATED GLASS. SET GLAZING IN EXISTING FRAMES. LOCATION OF TEMPERED GLASS IS NOTED ON THE EXTERIOR ELEVATIONS WITH A "T" SYMBOL.
- NEW TILE AT EXISTING MENU BOARD VALENCE. TILE AROUND MENU BOARDS. TILE PER INTERIOR DESIGN PLANS - BY OTHERS.



1 PARTITION TYPE
1" = 1'-0"



haag müller, inc.
Architecture • Engineering • Interiors
101 East Grand Avenue, Suite 1
Port Washington, Wisconsin 53074
262.268.1200 www.haagmuller.com
© 2018 haag müller, inc.



FLOOR PLAN
MAJOR REMODEL PROJECT
MCDONALD'S RESTAURANT (SITE ID # 480107)
2340 E. MORELAND BLVD.
WAUKESHA, WISCONSIN

REVISIONS		DATE	DESCRIPTION
NO.	DATE		

DATE: 03-06-18
PROJ. NO: 1709151
DRAWN BY: AY
SHEET

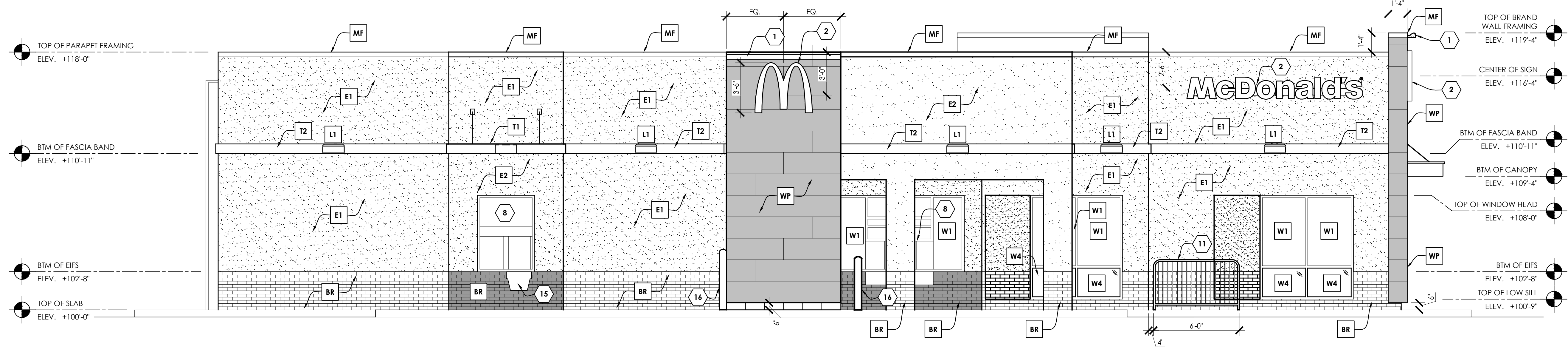
A-101



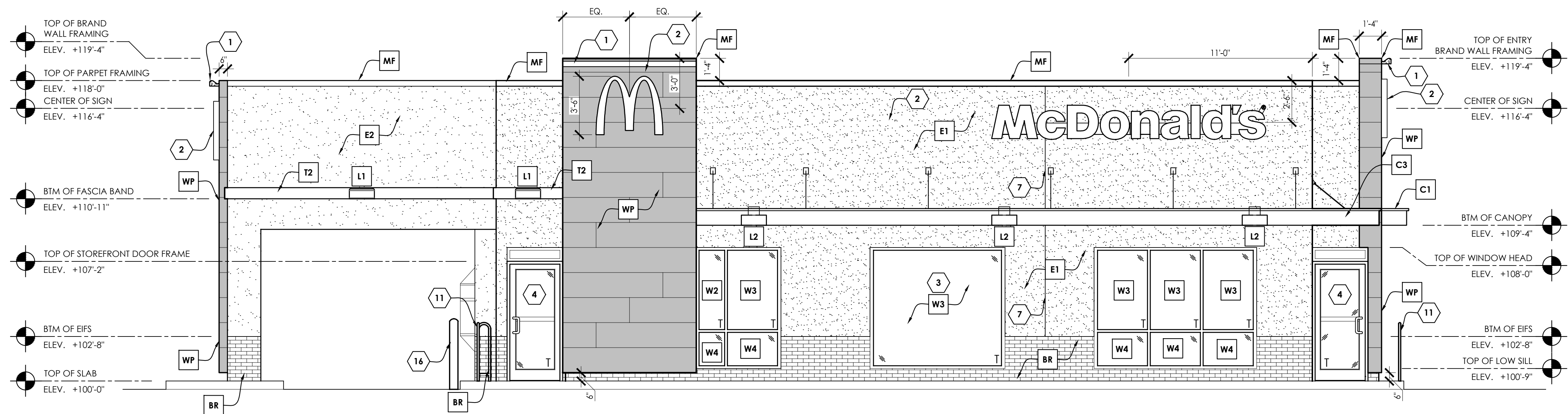
haag müller, inc.
Architecture • Engineering • Interiors

101 East Grand Avenue, Suite 1
Port Washington, Wisconsin 53074
262.268.1200 www.haagmuller.com

© 2018 haag müller, inc.



1 SOUTH ELEVATION (DRIVE-THRU SIDE)
SCALE: 1/4" = 1'-0"



2 EAST ELEVATION (FRONT)
SCALE: 1/4" = 1'-0"

E.I.F.S. GENERAL NOTES:

E.I.F.S. EXPANSION JOINTS PER MFG. THE FOLLOWING REQUIREMENTS ARE BASED ON DRYVIT MANUFACTURING STANDARDS. AS A MINIMUM, EXPANSION JOINTS SHALL BE PLACED AT THE FOLLOWING LOCATIONS:

- WHERE EXPANSION JOINTS OCCUR IN THE SUBSTRATE SYSTEM.
- WHERE BUILDING EXPANSION JOINTS OCCUR.
- AT FLOOR LINES IN WOOD FRAME CONSTRUCTION.
- AT FLOOR LINES OF NON-WOOD FRAMED BUILDINGS WHERE SIGNIFICANT MOVEMENT IS EXPECTED.
- WHERE THE SUBSTRATE PLUS SYSTEM ABUTS DISSIMILAR MATERIALS.
- WHERE THE SUBSTRATE TYPE CHANGES.
- WHERE PREFABRICATED PANELS ABUT ONE ANOTHER.
- IN A CONTINUOUS ELEVATION AT INTERVALS NOT EXCEEDING 75 FEET.
- WHERE SIGNIFICANT STRUCTURAL MOVEMENT OCCURS, SUCH AS CHANGES IN ROOFLINE, BUILDING SHAPE OR STRUCTURAL SYSTEM.

ELEVATION KEYED NOTES - GROUP TWO NOTES:

THE FOLLOWING ELEVATION KEYED NOTES ARE ENCLOSED WITH A (X) SYMBOL ON THE ELEVATIONS.

- HIRAF LINEAR LED FACADE LIGHT TO BE INSTALLED ALONG FRONT OF COPING, AVAILABLE FROM SECURITY LIGHTING. INSTALL PER MANUFACTURER'S SPECIFICATIONS. SEE ELECTRICAL SHEETS AND ROOF PLAN.
- ILLUMINATED McDONALD'S SIGNAGE: LED ILLUMINATED. SIGNS MUST BE CONTROLLED VIA PHOTOCELL OR A PROGRAMMABLE LIGHTING CONTROL PANEL PER WARRANTY REQUIREMENTS. CONTROLS BY E.C. COORDINATE WITH OWNER CONTROL TYPE: PHOTOCELL OR CONTROL PANEL. CURRENT SIGN MANUFACTURER FOR SIGNAGE PACKAGE IS: EVERBRITE (414-529-3500). UNDER SEPARATE PERMIT. FINAL SIGN PACKAGE TO BE APPROVED BY MUNICIPALITY.
- REPLACE "M" LOGO GLAZING. FRAME TO REMAIN. TEMPERED GLASS INDICATED WITH "T".
- NEW STOREFRONT ENTRANCE DOORS PER PLAN.
- PAINT EXISTING GUTTERS AND DOWNSPOUTS TO MATCH CORRUGATED METAL PANEL.
- NEW ROOF SCREEN: PAINT TO MATCH BUILDING BASE PAINT COLOR, PER MATERIAL COLOR TABLE. SEE DETAIL 3/A-202.
- E.I.F.S. CONTROL JOINTS INSTALLED PER MANUFACTURERS REQUIREMENTS.
- EXISTING CASH AND PRESENTER BOOTH DRIVE-THRU WINDOWS TO REMAIN.
- PRIME & PAINT EXISTING ROOF ACCESS LADDER. COLOR: TO MATCH BASE PAINT COLOR.
- EXISTING BOLLARD TO BE PAINTED SAFETY YELLOW.
- STAINLESS STEEL GUARD RAIL. REFER TO THE SITE PLAN FOR DETAILS.
- EXISTING HOSE BIB TO REMAIN.
- EXISTING BULK CO2 FILL BOX TO REMAIN.
- EXISTING BULK OIL FILL BOX TO REMAIN.
- RMHC PASS THROUGH COIN COLLECTOR TO REMAIN.
- PAINT EXISTING BOLLARD SAFETY YELLOW.

SIGNAGE SUMMARY (PER CH. 27: SIGNS & OUTDOOR ADVERTISING)

ELEVATION	FLAT SIGNS ALLOWED	PROPOSED
EAST / FRONT	110.4 SF	46.83 SF
NORTH / NON DT SIDE	165 SF	14 SF
WEST / REAR	110.4 SF	14 SF
SOUTH / DT SIDE	165 SF	46.83 SF

ELEVATION KEYED NOTES - GROUP ONE NOTES:

THE FOLLOWING ELEVATION KEYED NOTES ARE ENCLOSED WITH A () SYMBOL ON THE ELEVATIONS.

- BR EXISTING BRICK TO REMAIN. PAINT BASE PAINT COLOR PER MATERIAL COLOR TABLE.
- C1 CANOPY: 1'-6" DEEP BY 1' HIGH (NO TIE BACKS). CANOPY COLOR: WHITE. SEE ELECTRICAL SHEETS AND DETAIL 2/A-501 FOR MORE INFORMATION.
- C2 CANOPY: 3' DEEP BY 1' HIGH. TIE-BACKS COLOR: CHARCOAL CANOPY COLOR: WHITE. SEE ELECTRICAL SHEETS AND DETAIL 1/A-501 FOR MORE INFORMATION.
- C3 CANOPY: 4' DEEP BY 1' HIGH. TIE-BACKS COLOR: CHARCOAL CANOPY COLOR: WHITE. SEE ELECTRICAL SHEETS AND DETAIL 1/A-501 FOR MORE INFORMATION.
- D EXISTING DOOR AND FRAME, PRIME & PAINT. COLOR: MATCH FIELD PAINT COLOR.
- E WATER MANAGED E.I.F.S. (EXTERIOR INSULATION FINISH SYSTEM) OUTSULATION PLUS MD BY DRYVIT OR EQUAL. PROVIDE PANZER 20 IMPACT MESH IN ALL E.I.F.S BELOW ELEV. +108'-0". FINISH: HYDROPHOBIC. TEXTURE: SANDBLAST. IN ADDITION TO EXPANSION JOINTS LISTED BELOW, PROVIDE EXPANSION JOINTS AT INSIDE CORNERS. ALL OTHERS TO BE FIELD LOCATED PER MFG SPECS. SEE BUILDING SECTIONS & SHEETS A-504 & A 505 FOR DETAILS. COLORS PER COLOR TABLE, THIS SHEET. COLOR: E1= BM FAIRVIEW TAUPE HC-85 COLOR: E2= BM IRON MOUNTAIN (2134-30)
- L RADIAL WALL SCONCE: DOWNLIGHT ONLY, AVAILABLE THROUGH SECURITY LIGHTING. INSTALL PER MANUFACTURER'S INSTRUCTIONS. SEE ELECTRICAL SHEETS FOR SPECIFICATIONS AND ROOF PLAN FOR SPACING. COLOR: L1 = SILVER COLOR: L2 = WHITE
- MF ALUMINUM EDGE FASCIA: BY METAL-ERA: SEE DETAIL 1, 2, & 6/A-502. COLOR: CITYSCAPE.
- T1 TRELLIS: 4'-0" DEEP BY 8" HIGH ALUM. TIE-BACK COLOR: CHARCOAL. SEE DETAIL 3/A-501. COLOR: CITYSCAPE.
- T2 2x8 ALUM. FASCIA BAND: SEE DETAIL 5/A-501 & ROOF PLAN. COLOR: CITYSCAPE.

- WP NICHIIA ARCHITECTURAL WALL PANELS: ILLUMINATION SERIES, AWP-3030. COLOR PER COLOR TABLE THIS SHEET. NOTE: PANEL PATTERN SHALL BEGIN W/ FULL PANELS ABOVE/BELOW OPENING HEAD ELEVATION (9'-4"). SUPPLIER: MATT STEPHENSON mstephenson@nichiiha.com P: (770-805-9466) C: (770-789-8228)
- W1 EXISTING STOREFRONT GLAZING AND FRAMES TO REMAIN.
- W2 NEW STOREFRONT GLAZING AND FRAMES PER FLOOR PLAN. FRAME COLOR TO BE ANODIZED DARK BRONZE. TEMPERED GLASS INDICATED WITH A "T" ON THE ELEVATIONS.
- W3 NEW STOREFRONT GLAZING TO BE PLACED IN EXISTING FRAMES. SEE FLOOR PLAN FOR MORE INFORMATION.
- W4 NEW SPANDREL GLASS TO REPLACE EXISTING INSULATED "M" PANELS. FRAMES TO REMAIN. SPANDREL GLASS SPEC: #1-0016 CHARCOAL - 6MM PPG CLEAR OPACI-COAT-300 (ICD HIGH PERFORMANCE COATINGS) OR EQUAL.

MATERIAL COLOR TABLE

1.) ALL COLORS LISTED HERE UNLESS DESCRIBED IN THE KEYED NOTES.
2.) ALL PAINT COLORS LISTED ARE BY: BENJAMIN MOORE

CORE 16 MRP COLOR SCHEME	CRAFTSMAN
NICHIIA BRAND WALL - WP	CUSTOM COLOR: BENJAMIN MOORE IRON MOUNTAIN 2134-30 (EGGSHELL FINISH)
BASE PAINT COLOR	BM FAIRVIEW TAUPE HC-85
PAINT COLOR FOR METAL UTILITY DOORS AND FRAMES	MATCH BUILDING BASE PAINT COLOR

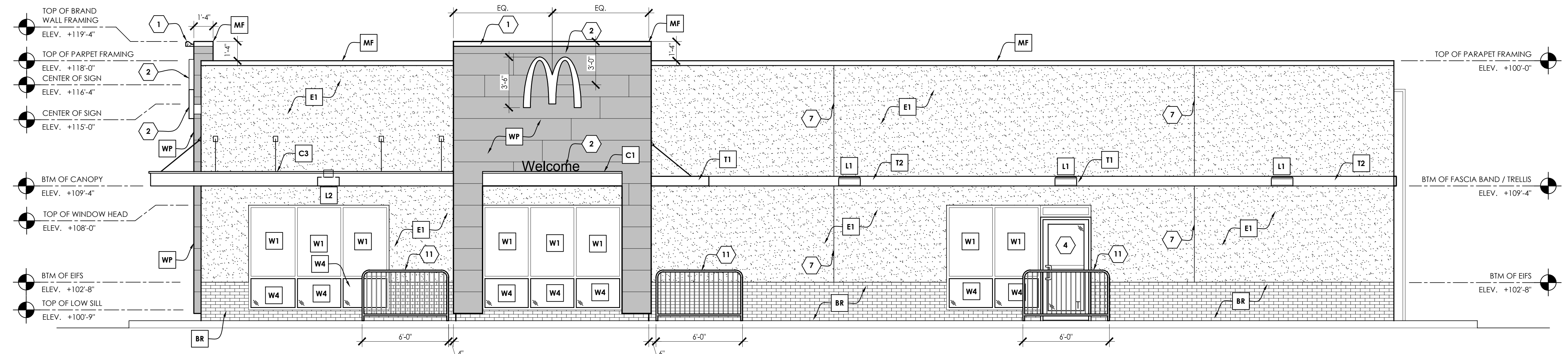
EXTERIOR ELEVATIONS

MAJOR REMODEL PROJECT

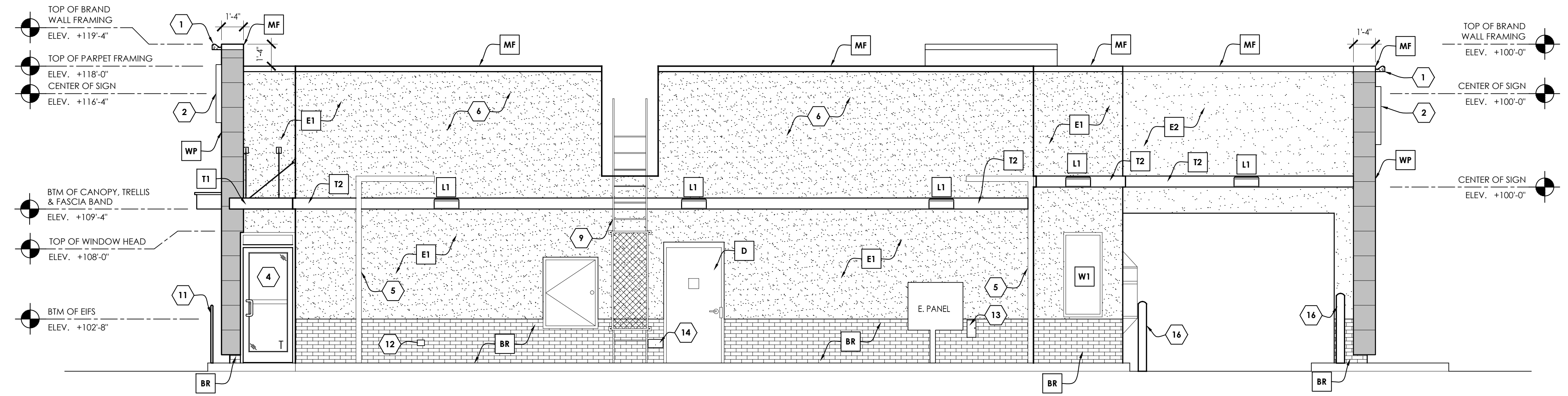
McDONALD'S RESTAURANT (SITE ID # 480107)
2340 E. MORELAND BLVD.
WAUKESHA, WISCONSIN

REVISIONS		DESCRIPTION
NO.	DATE	

DATE: 03-06-18
PROJ. NO: 1709151
DRAWN BY: ZP/JY
SHEET



1 NORTH ELEVATION (NON D.T. SIDE)
SCALE: 1/4" = 1'-0"



2 WEST ELEVATION (REAR)
SCALE: 1/4" = 1'-0"

E.I.F.S. GENERAL NOTES:

E.I.F.S. EXPANSION JOINTS PER MFG. THE FOLLOWING REQUIREMENTS ARE BASED ON DRYVIT MANUFACTURING STANDARDS. AS A MINIMUM, EXPANSION JOINTS SHALL BE PLACED AT THE FOLLOWING LOCATIONS:

- WHERE EXPANSION JOINTS OCCUR IN THE SUBSTRATE SYSTEM.
- WHERE BUILDING EXPANSION JOINTS OCCUR.
- AT FLOOR LINES IN WOOD FRAME CONSTRUCTION.
- AT FLOOR LINES OF NON-WOOD FRAMED BUILDINGS WHERE SIGNIFICANT MOVEMENT IS EXPECTED.
- WHERE THE SUBSTRATE PLUS SYSTEM ABUTS DISSIMILAR MATERIALS.
- WHERE THE SUBSTRATE TYPE CHANGES.
- WHERE PREFABRICATED PANELS ABUT ONE ANOTHER.
- IN A CONTINUOUS ELEVATION AT INTERVALS NOT EXCEEDING 75 FEET.
- WHERE SIGNIFICANT STRUCTURAL MOVEMENT OCCURS, SUCH AS CHANGES IN ROOFLINE, BUILDING SHAPE OR STRUCTURAL SYSTEM.

ELEVATION KEYED NOTES - GROUP TWO NOTES:

THE FOLLOWING ELEVATION KEYED NOTES ARE ENCLOSED WITH A (X) SYMBOL ON THE ELEVATIONS.

- HIRAF LINEAR LED FACADE LIGHT TO BE INSTALLED ALONG FRONT OF COPING, AVAILABLE FROM SECURITY LIGHTING. INSTALL PER MANUFACTURER'S SPECIFICATIONS. SEE ELECTRICAL SHEETS AND ROOF PLAN.
- ILLUMINATED McDONALD'S SIGNAGE: LED ILLUMINATED. SIGNS MUST BE CONTROLLED VIA PHOTOCELL OR A PROGRAMMABLE LIGHTING CONTROL PANEL PER WARRANTY REQUIREMENTS. CONTROLS BY E.C. COORDINATE WITH OWNER CONTROL TYPE: PHOTOCELL OR CONTROL PANEL. CURRENT SIGN MANUFACTURER FOR SIGNAGE PACKAGE IS: EVERBRITE (414-529-3500). UNDER SEPARATE PERMIT. FINAL SIGN PACKAGE TO BE APPROVED BY MUNICIPALITY.
- REPLACE "M" LOGO GLAZING. FRAME TO REMAIN. TEMPERED GLASS INDICATED WITH "A".
- NEW STOREFRONT ENTRANCE DOORS PER PLAN.
- PAINT EXISTING GUTTERS AND DOWNSPOUTS TO MATCH CORRUGATED METAL PANEL.
- NEW ROOF SCREEN: PAINT TO MATCH BUILDING BASE PAINT COLOR, PER MATERIAL COLOR TABLE. SEE DETAIL 3/A-202.
- E.I.F.S. CONTROL JOINTS INSTALLED PER MANUFACTURERS REQUIREMENTS.

SIGNAGE SUMMARY (PER CH. 27: SIGNS & OUTDOOR ADVERTISING)

ELEVATION	FLAT SIGNS ALLOWED	PROPOSED
EAST / FRONT	110.4 SF	46.83 SF
NORTH / NON DT SIDE	165 SF	14 SF
WEST / REAR	110.4 SF	14 SF
SOUTH / DT SIDE	165 SF	46.83 SF

- EXISTING CASH AND PRESENTER BOOTH DRIVE-THRU WINDOWS TO REMAIN.
- PRIME & PAINT EXISTING ROOF ACCESS LADDER. COLOR: TO MATCH BASE PAINT COLOR.
- EXISTING BOLLARD TO BE PAINTED SAFETY YELLOW.
- STAINLESS STEEL GUARD RAIL. REFER TO THE SITE PLAN FOR DETAILS.
- EXISTING HOSE BIB TO REMAIN.
- EXISTING BULK CO2 FILL BOX TO REMAIN.
- EXISTING BULK OIL FILL BOX TO REMAIN.
- RMHC PASS THROUGH COIN COLLECTOR TO REMAIN.
- PAINT EXISTING BOLLARD SAFETY YELLOW.

ELEVATION KEYED NOTES - GROUP ONE NOTES:

THE FOLLOWING ELEVATION KEYED NOTES ARE ENCLOSED WITH A [] SYMBOL ON THE ELEVATIONS.

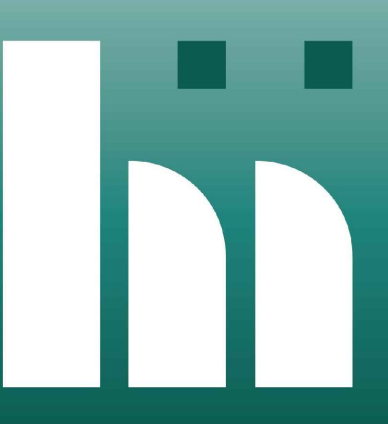
- BR EXISTING BRICK TO REMAIN. PAINT BASE PAINT COLOR PER MATERIAL COLOR TABLE.
- C1 CANOPY: 1'-6" DEEP BY 1' HIGH (NO TIE BACKS). CANOPY COLOR: WHITE. SEE ELECTRICAL SHEETS AND DETAIL 2/A-501 FOR MORE INFORMATION.
- C2 CANOPY: 3' DEEP BY 1' HIGH. TIE-BACKS COLOR: CHARCOAL CANOPY COLOR: WHITE. SEE ELECTRICAL SHEETS AND DETAIL 1/A-501 FOR MORE INFORMATION.
- C3 CANOPY: 4' DEEP BY 1' HIGH. TIE-BACKS COLOR: CHARCOAL CANOPY COLOR: WHITE. SEE ELECTRICAL SHEETS AND DETAIL 1/A-501 FOR MORE INFORMATION.
- D EXISTING DOOR AND FRAME, PRIME & PAINT. COLOR: MATCH FIELD PAINT COLOR.
- E WATER MANAGED E.I.F.S. (EXTERIOR INSULATION FINISH SYSTEM) OUTSULATION PLUS MD BY DRYVIT OR EQUAL. PROVIDE PANZER 20 IMPACT MESH IN ALL E.I.F.S BELOW ELEV +108'-0". FINISH: HYDROPHOBIC. TEXTURE: SANDBLAST. IN ADDITION TO EXPANSION JOINTS LISTED BELOW, PROVIDE EXPANSION JOINTS AT INSIDE CORNERS. ALL OTHERS TO BE FIELD LOCATED PER MFG SPECS. SEE BUILDING SECTIONS & SHEETS A-504 & A 505 FOR DETAILS. COLORS PER COLOR TABLE, THIS SHEET. COLOR: E1= BM FAIRVIEW TAUPE HC-85 COLOR: E2= BM IRON MOUNTAIN (2134-30)
- L RADIAL WALL SCONCE: DOWNLIGHT ONLY, AVAILABLE THROUGH SECURITY LIGHTING. INSTALL PER MANUFACTURER'S INSTRUCTIONS. SEE ELECTRICAL SHEETS FOR SPECIFICATIONS AND ROOF PLAN FOR SPACING. COLOR: L1 = SILVER COLOR: L2 = WHITE
- MF ALUMINUM EDGE FASCIA: BY METAL-ERA: SEE DETAIL 1, 2, & 6/A-502. COLOR: CITYSCAPE.
- T1 TRELLIS: 4'-0" DEEP BY 8" HIGH ALUM. TIE-BACK COLOR: CHARCOAL. SEE DETAIL 3/A-501. COLOR: CITYSCAPE.
- T2 2x8 ALUM. FASCIA BAND: SEE DETAIL 5/A-501 & ROOF PLAN. COLOR: CITYSCAPE.

- WP NICHHA ARCHITECTURAL WALL PANELS: ILLUMINATION SERIES, AWP-3030. COLOR PER COLOR TABLE THIS SHEET. NOTE: PANEL PATTERN SHALL BEGIN W/ FULL PANELS ABOVE/BELOW OPENING HEAD ELEVATION [9'-4"]. SUPPLIER: MATT STEPHENSON mstephenson@nichha.com P: (770-805-9466) C: (770-789-8228)
- W1 EXISTING STOREFRONT GLAZING AND FRAMES TO REMAIN.
- W2 NEW STOREFRONT GLAZING AND FRAMES PER FLOOR PLAN. FRAME COLOR TO BE ANODIZED DARK BRONZE. TEMPERED GLASS INDICATED WITH "T" ON THE ELEVATIONS.
- W3 NEW STOREFRONT GLAZING TO BE PLACED IN EXISTING FRAMES. SEE FLOOR PLAN FOR MORE INFORMATION.
- W4 NEW SPANDREL GLASS TO REPLACE EXISTING INSULATED "M" PANELS. FRAMES TO REMAIN. SPANDREL GLASS SPEC: #1-0016 CHARCOAL - 6MM PPG CLEAR OPACI-COAT-300 (ICD HIGH PERFORMANCE COATINGS) OR EQUAL.

MATERIAL COLOR TABLE

1.) ALL COLORS LISTED HERE UNLESS DESCRIBED IN THE KEYED NOTES.
2.) ALL PAINT COLORS LISTED ARE BY: BENJAMIN MOORE

CORE 16 MRP COLOR SCHEME	CRAFTSMAN
NICHHA BRAND WALL - WP	CUSTOM COLOR: BENJAMIN MOORE IRON MOUNTAIN 2134-30 (EGGSHELL FINISH)
BASE PAINT COLOR	BM FAIRVIEW TAUPE HC-85
PAINT COLOR FOR METAL UTILITY DOORS AND FRAMES	MATCH BUILDING BASE PAINT COLOR



haag müller, inc.
Architecture • Engineering • Interiors

101 East Grand Avenue, Suite 1
Port Washington, Wisconsin 53074
262.268.1200 www.haagmuller.com

© 2018 haag müller, inc.



EXTERIOR ELEVATIONS
MAJOR REMODEL PROJECT
 McDONALD'S RESTAURANT (SITE ID # 480107)
 2340 E. MORELAND BLVD.
 WAUKESHA, WISCONSIN

REVISIONS	
NO.	DESCRIPTION

DATE: 03-06-18
PROJ. NO: 1709151
DRAWN BY: ZP
SHEET

A-202