

1 EAST ELEVATION
CUP1 N.T.S.



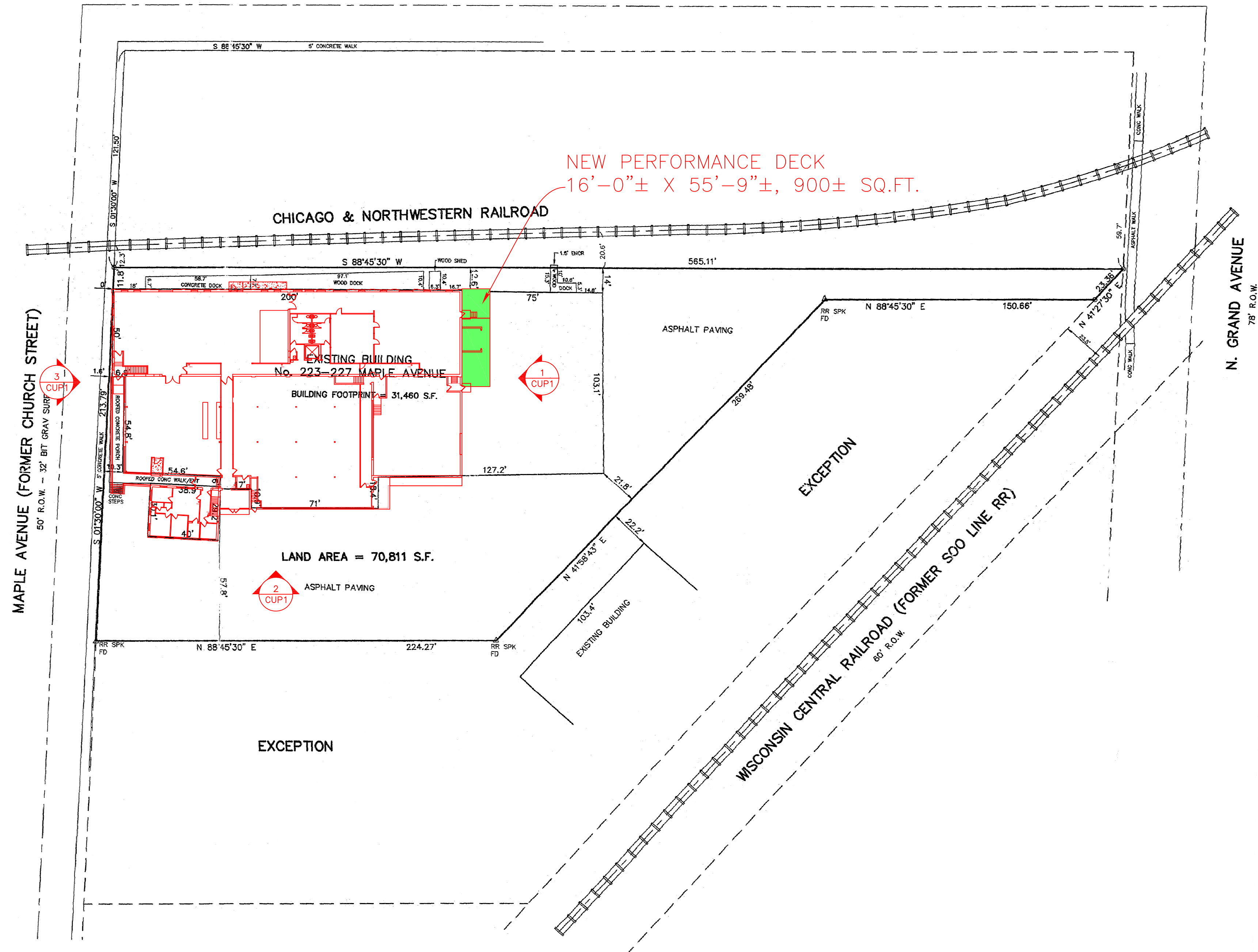
2 SOUTH ELEVATION
CUP1 N.T.S.



3 WEST ELEVATION
CUP1 N.T.S.

NEW PERFORMANCE DECK
16'-0"± X 55'-9"±, 900± SQ.FT.

WILLIAMS STREET
50' R.O.W.



SHEET INDEX	
SHEET #	SHEET TITLE
CUP-1	SURVEY AND SITE PLAN
CUP-2	PARKING PLAN
CUP-3	BASEMENT PLAN
CUP-4	FIRST FLOOR PLAN
CUP-5	SECOND FLOOR PLAN

TRUE NORTH PLAN NORTH

1" = 40'-0"

0 40' 80' 120'

SURVEY AND SITE PLAN

ATTRIBUTION OF SOURCE (SURVEY)

THIS SURVEY THAT IS INCORPORATED INTO THIS DRAWING WAS PREPARED BY JAHNKE & JAHNKE ASSOCIATES INC. IN 1999.

PRELIMINARY DRAWING
NOT FOR CONSTRUCTION
DATE PRINTED: 09/07/2018

FISCHER-FISCHER-THEIS, INC. ARCHITECTS • ENGINEERS • PLANNERS
S22 W22660 BROADWAY • WAUKESHA, WISCONSIN 53186-8199
(262) 547-6969 • FAX (262) 547-6960 • E-MAIL: ffr@ftrarchitects.com

INTERIOR ALTERATIONS
FISCHER CREATIVE ARTS CENTER
223 MAPLE AVENUE
WAUKESHA, WISCONSIN

CONSULTANT

TYPE	DATE	BY	REV #
	09/10/2018	MTP	

PROJECT NO.
17048

SHEET NO.
CUP-1



Fischer Creative Arts Center
223 Maple Ave
Waukesha, WI 53186
9/1/2018

Parking Space Availability

Parking spaces in our lot and other lots around our building. This list does not include street parking.

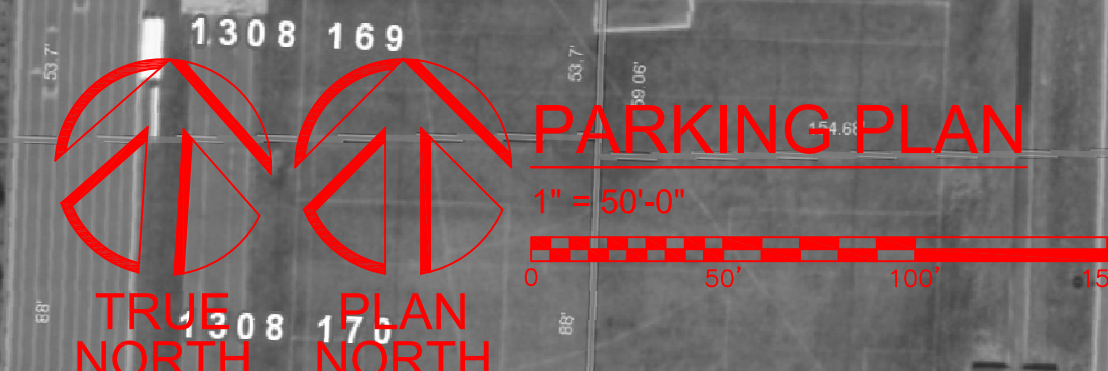
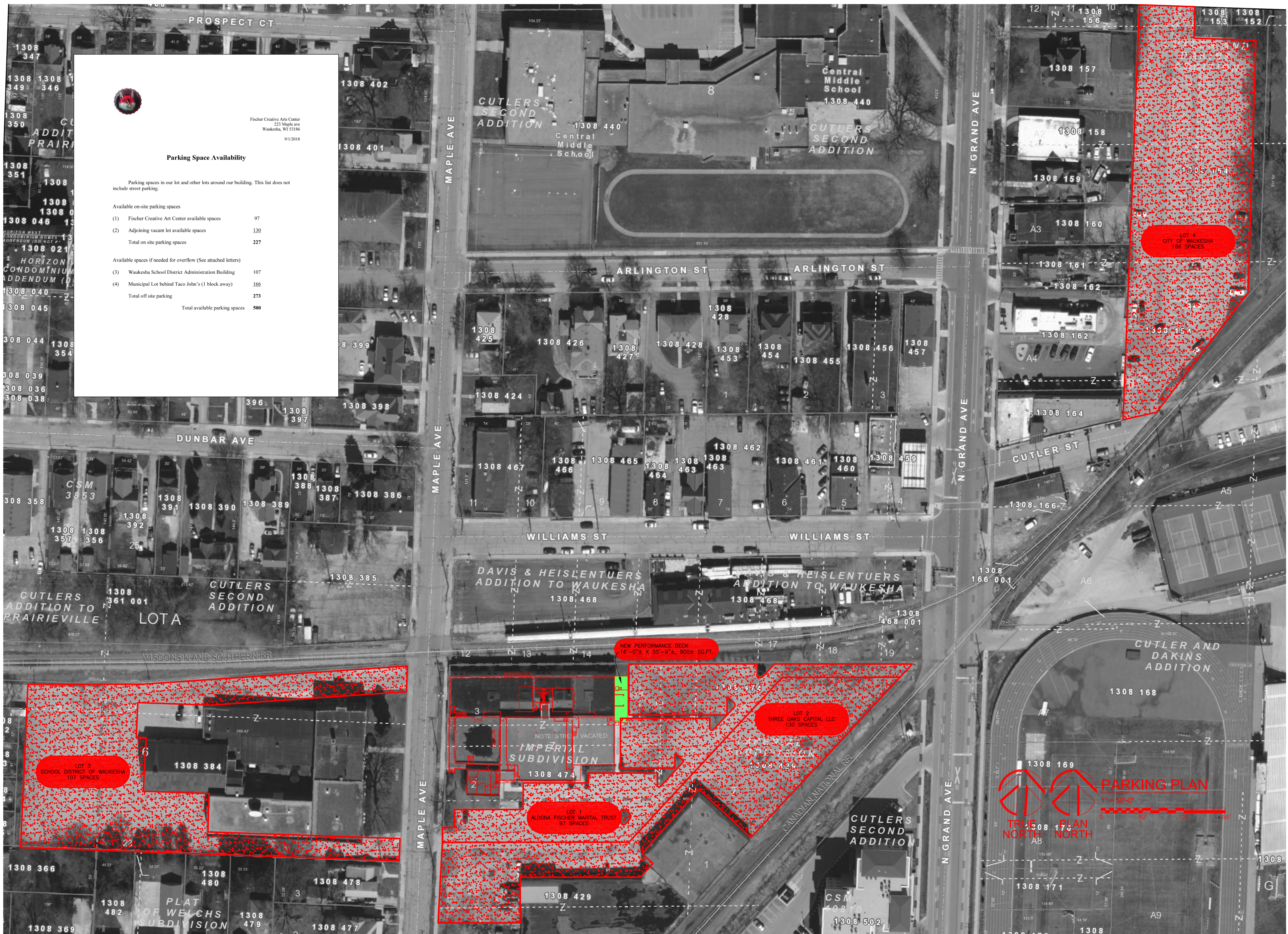
Available on-site parking spaces

(1) Fischer Creative Art Center available spaces	97
(2) Adjoining vacant lot available spaces	130
Total on site parking spaces	227

Available spaces if needed for overflow (See attached letters)

(3) Waukesha School District Administration Building	107
(4) Municipal Lot behind Taco John's (1 block away)	166
Total off site parking	273

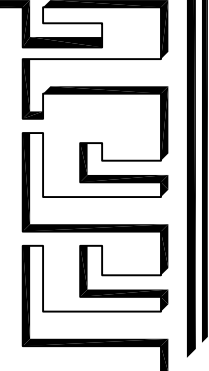
Total available parking spaces 500



PRELIMINARY DRAWING
NOT FOR CONSTRUCTION
DATE PRINTED: 09/07/2018

INTERIOR ALTERATIONS
FISCHER CREATIVE ARTS CENTER
223 MAPLE AVENUE
WAUKESHA, WISCONSIN

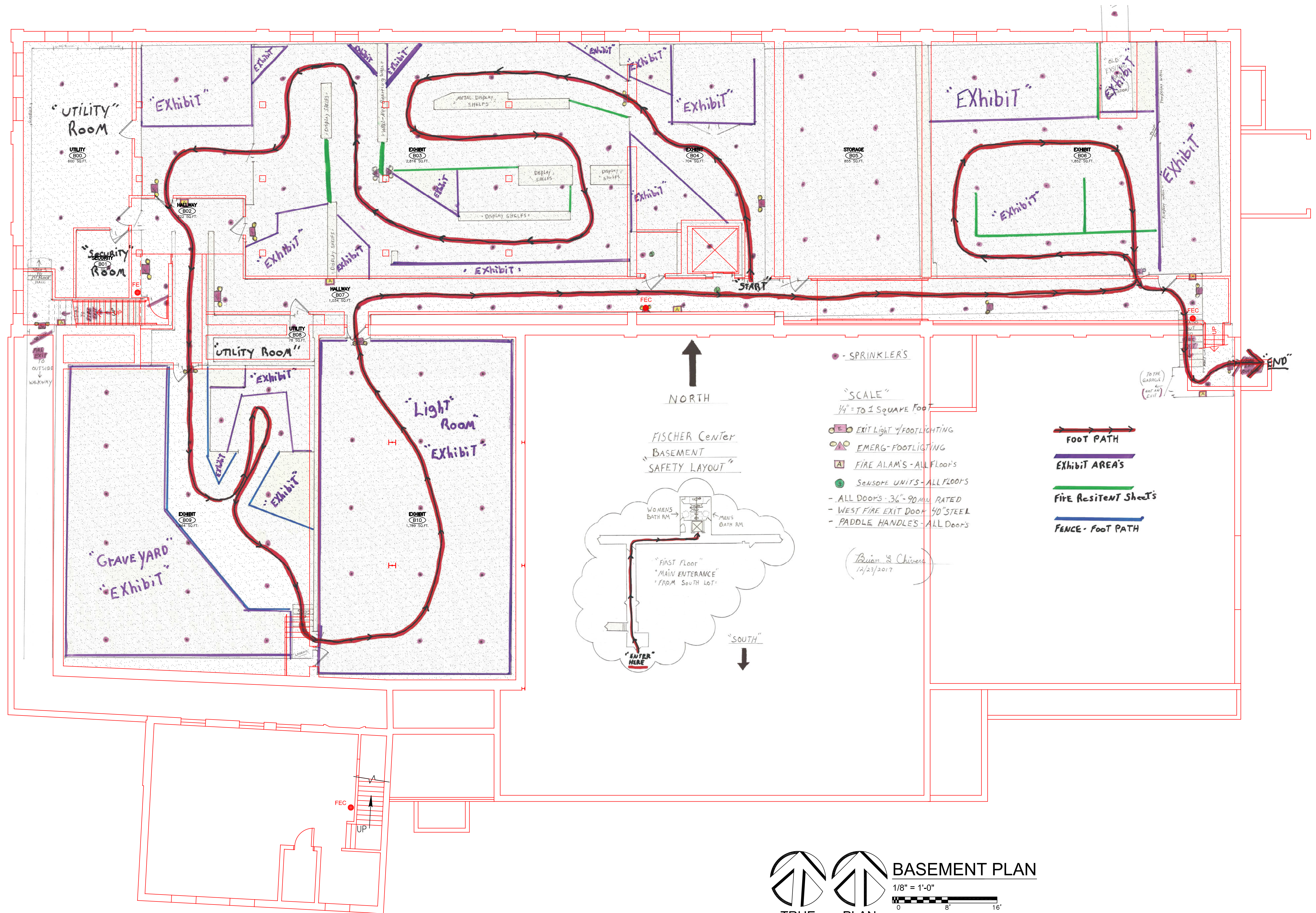
FISCHER-FISCHER-THESIS, INC. ARCHITECTS - ENGINEERS - PLANNERS
S22 W22660 BROADWAY • WAUKESHA, WISCONSIN 53186-1199
(262) 547-6969 • FAX (262) 547-6960 • E-MAIL: ffr@ftrarchitects.com



CONSULTANT

TYPE	DATE	BY	REV #
	09/10/2018	MTP	

PROJECT NO.
17048
SHEET NO.
CUP-2

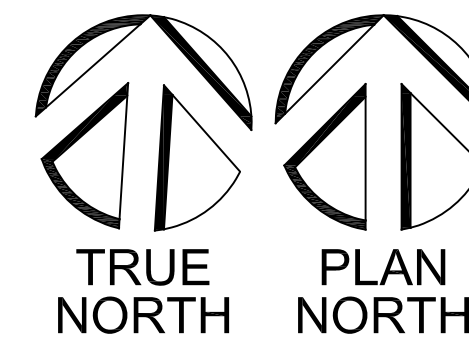


ATTRIBUTION OF SOURCE (BASE DRAWING)

THIS DRAWING WAS ORIGINALLY PREPARED BY PATERA, LLC IN 2005 (OR THEREABOUTS) AND REFERENCED TO THEIR PROJECT NO. 05-354. IT WAS OBTAINED BY FISCHER-FISCHER-THEIS, INC. (WITH THE KNOWLEDGE OF PATERA, LLC) AND MODIFIED, IN PART, TO REFLECT EXISTING CONDITIONS AS OF AUGUST, 2016.

ATTRIBUTION OF SOURCE (FREEHAND DRAWING AND NOTES)

THIS DRAWING WAS PREPARED BY BRIAN CHIVERS, ACTING ON BEHALF OF FISCHER CREATIVE ARTS CENTER, AND GIVEN TO FISCHER-FISCHER-THEIS, INC. FOR INTEGRATION INTO THE BASE DRAWING.



BASEMENT PLAN

1/8" = 1'-0"
 0 8' 16'

PRELIMINARY DRAWING
 NOT FOR CONSTRUCTION
 DATE PRINTED: 09/07/2018

FISCHER-FISCHER-THEIS, INC. ARCHITECTS - ENGINEERS - PLANNERS
 S22 W22660 BROADWAY • WAUKESHA, WISCONSIN 53186-8199
 (262) 547-6969 • FAX (262) 547-6960 • E-MAIL: ffr@ftrarchitects.com

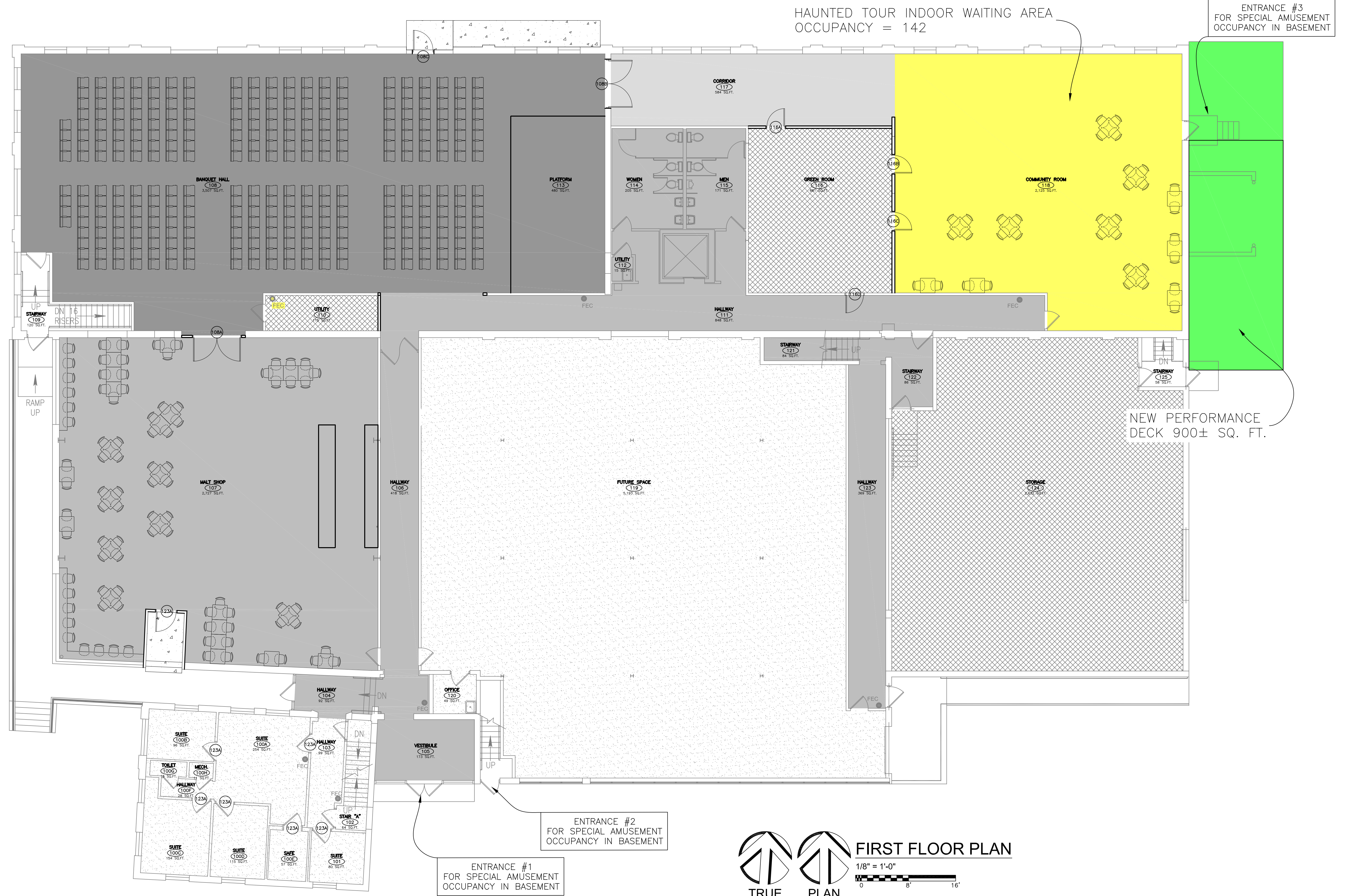
INTERIOR ALTERATIONS
 FISCHER CREATIVE ARTS CENTER
 223 MAPLE AVENUE
 WAUKESHA, WISCONSIN

CONSULTANT

DATE	BY	REV #
09/10/2018	MTP	

PROJECT NO.
 17048

SHEET NO.
 CUP-3



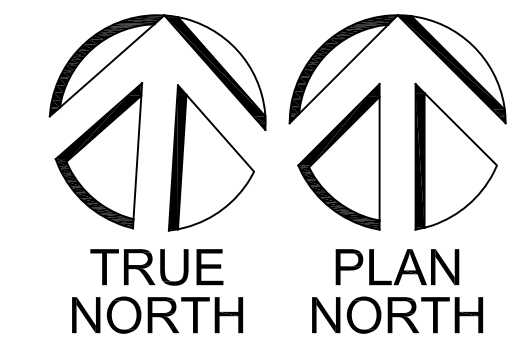
HAUNTED TOUR INDOOR WAITING AREA
OCCUPANCY = 142

ENTRANCE #3
FOR SPECIAL AMUSEMENT
OCCUPANCY IN BASEMENT

NEW PERFORMANCE
DECK 900± SQ. FT.

ENTRANCE #2
FOR SPECIAL AMUSEMENT
OCCUPANCY IN BASEMENT

ENTRANCE #1
FOR SPECIAL AMUSEMENT
OCCUPANCY IN BASEMENT



FIRST FLOOR PLAN
1/8" = 1'-0"
0 8' 16'

ATTRIBUTION OF SOURCE (BASE DRAWING)

THIS DRAWING WAS ORIGINALLY PREPARED BY PATERA, LLC IN 2005 (OR THEREABOUTS) AND REFERENCED TO THEIR PROJECT NO. 05-354. IT WAS OBTAINED BY FISCHER-FISCHER-THIS, INC. (WITH THE KNOWLEDGE OF PATERA, LLC) AND MODIFIED, IN PART, TO REFLECT EXISTING CONDITIONS AS OF AUGUST, 2016.

DESIGN INFORMATION

OCCUPANCY/USE: BUSINESS GROUP B
CONSTRUCTION CLASSIFICATION: TYPE III-B
ALLOWABLE AREA: UNLIMITED
FIRE PROTECTION: FULLY SPRINKLERED
SEISMIC DESIGN CATAGORY: A
BUILDING IMPORTANCE CATAGORY: IV

LEGEND

	OCCUPANCY/USE: ASSEMBLY GROUP A-1
	OCCUPANCY/USE: ASSEMBLY GROUP A-2
	OCCUPANCY/USE: ASSEMBLY GROUP A-3
	OCCUPANCY/USE: BUSINESS GROUP B
	OCCUPANCY/USE: STORAGE GROUP S-2

PRELIMINARY DRAWING
NOT FOR CONSTRUCTION
DATE PRINTED: 09/07/2018

FISCHER-FISCHER-THIS, INC. ARCHITECTS • ENGINEERS • PLANNERS
S22 W22660 BROADWAY • WAUKESHA, WISCONSIN 53186-8199
(262) 547-6969 • FAX (262) 547-6960 • E-MAIL: ffr@fischerthis.com

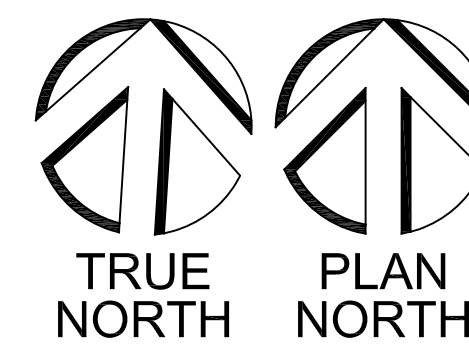
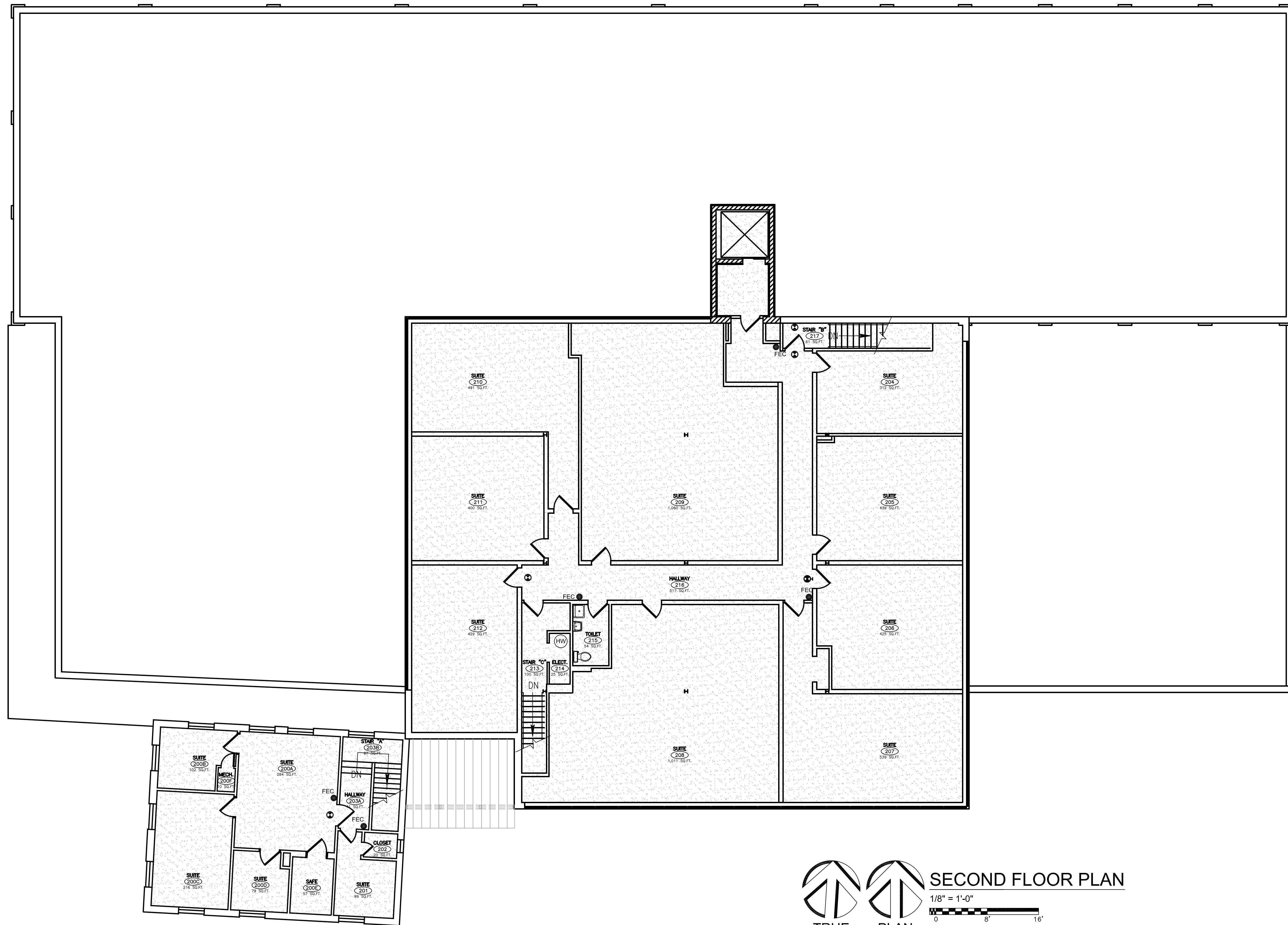
INTERIOR ALTERATIONS
FISCHER CREATIVE ARTS CENTER
223 MAPLE AVENUE
WAUKESHA, WISCONSIN

CONSULTANT

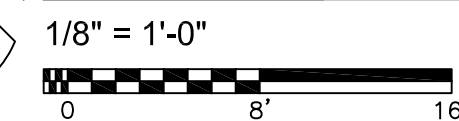
REV #	DATE	BY	TYPE
1	09/10/2018	MTP	

PROJECT NO.
17048

SHEET NO.
CUP-4



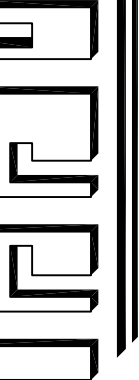
SECOND FLOOR PLAN



LEGEND	
	OCCUPANCY/USE: ASSEMBLY GROUP A-1
	OCCUPANCY/USE: ASSEMBLY GROUP A-2
	OCCUPANCY/USE: ASSEMBLY GROUP A-3
	OCCUPANCY/USE: BUSINESS GROUP B
	OCCUPANCY/USE: STORAGE GROUP S-2

PRELIMINARY DRAWING
NOT FOR CONSTRUCTION
DATE PRINTED: 09/07/2018

INTERIOR ALTERATIONS
FISCHER CREATIVE ARTS CENTER
223 MAPLE AVENUE
WAUKESHA, WISCONSIN



FISCHER-FISCHER-THEIS, INC. ARCHITECTS • ENGINEERS • PLANNERS
S22, W22660 BROADWAY • WAUKESHA, WISCONSIN 53186-8199
(262) 547-6969 • FAX (262) 547-6960 • E-MAIL: ff@ffarchitects.com

CONSULTANT

TYPE	DATE	BY	REV #
	09/10/2018	MTP	

PROJECT NO.
17048

SHEET NO.
CUP-5