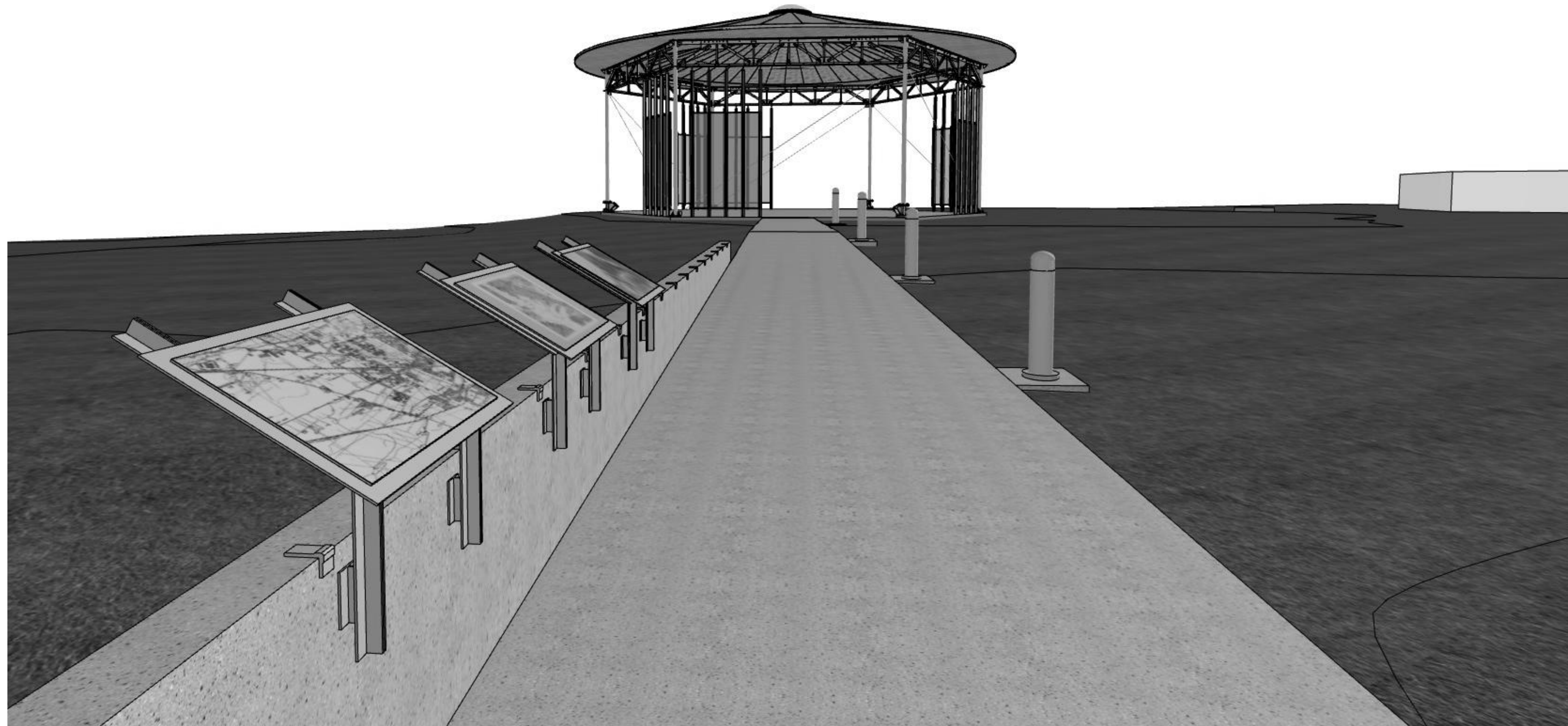


HILLCREST PARK

2119 DAVIDSON ROAD
WAUKESHA, WI 53816



PERSPECTIVES USED TO CONVEY GENERAL LOOK OF THE DESIGN.
SEE SUBSEQUENT DRAWINGS FOR DETAILS AND DIMENSIONS.

CONTACT INFORMATION

OWNER:

WAUKESHA PARKS, RECREATION +
FORESTRY DEPARTMENT
1900 AVIATION DRIVE
WAUKESHA, WI 53188

ARCHITECT:

GALBRAITH CARNAHAN ARCHITECTS
6404 WEST NORTH AVENUE
MILWAUKEE, WI 53213
[414] 291-0772

CONTACT:

BRANDON REINKE
bmr@galbraithcarnahan.com

CIVIL ENGINEER:

ELLENA ENGINEERING CONSULTANTS, LLC
700 PILGRIM PARKWAY, SUITE 100
ELM GROVE, WI 53122
[262] 719-6183

CONTACT:

MARK ELLENA, PE
mellena@eeceng.com

STRUCTURAL ENGINEER:

SPIRE ENGINEERING INC.
305 NORTH PLANKINTON AVENUE, SUITE 101
MILWAUKEE, WI 53202
(414) 278-9200

CONTACT:

BRIAN GENDUSO, PE
bjg@spireengineer.com

ELECTRICAL ENGINEER:

COTTRELL DESIGN, INC.
1500 TEMPLE MORE LANE
GREEN BAY, WI 54313
(920) 490-9415

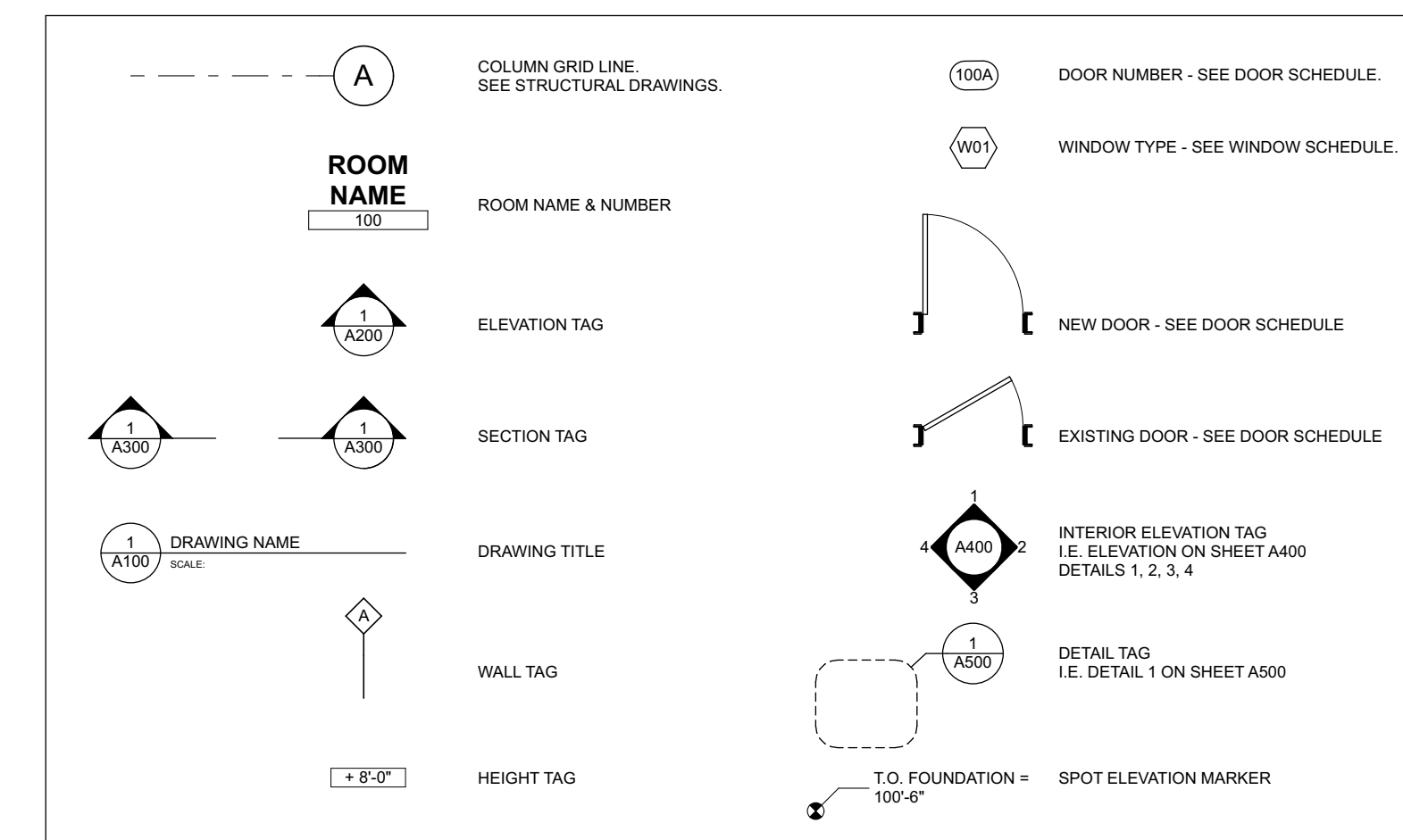
CONTACT:

BRUCE COTTRELL
bcottrell531@gmail.com

ABBREVIATIONS

# & @	FOUND OR NUMBER AND AT	D DBL DEMO DIA DIM DMS DISP DN DR DRWR DS DTL DW DWG	DOUBLE DEMOLISH OR DEMOLITION DIAMETER DIMENSION DIMENSIONS DISPENSER DOWN DOOR DRAWER DOWNSPOUT DETAIL DISHWASHER DRAWING	G GALV GB GWB	GAUGE GALVANIZED GRAB BAR GYPSUM WALL BOARD	H HIC HWVD HDR H HM HORIZ HP HR HT HRDBD HVAC	HOLLOW CORE HARDWOOD HEADER HIGH HOLLOW METAL HORIZONTAL HIGH POINT HOUR HEIGHT HARDBOARD HEATING, VENTILATING, AND AIR CONDITIONING	I IGRWB ILO INSTR INSUL INT	IMPACT RESISTANT GYPSUM WALL BOARD IN LIEU OF INSTRUCTIONS INSULATED OR INSULATION INTERIOR	J JNT	JOINT	L LHB	LOCKABLE HOSE BIBB	M MAX MFR MO MECH MEMBR MICRO MIN MISC	MAXIMUM MANUFACTURER MASONRY OPENING MECHANICAL MEMBRANE MICROWAVE MINIMUM MISCELLANEOUS	N NIC NO NOM	NOT IN CONTRACT NUMBER NOMINAL	O OC OH TLT TO TOC TOB TPD TO TYP	ON CENTER OPPOSITE HAND OPENING OUNCE	P PCC PLUMB PLYWD PASH PREFIN PT PNT PVC	PRE-CAST CONCRETE PLUMBING PLYWOOD POLE & SHELVES / SHELF PRE-FINISHED PRESSURE TREATED PAINT OR PAINTED POLYVINYL CHLORIDE	R RBR RC RCP RD REF REINF REQD RM RO	RUBBER BASE RUBBER RAIN CHAIN REFLECTED CEILING PLAN ROOF DRAIN REFRIGERATOR REINFORCED REQUIRED ROOM ROUGH OPENING	S SHTNG SF SIM SPEC SPK SS ST STC STL STRUCT	SHEATHING SHEET FLOORING SIMILAR SPECIFIED OR SPECIFICATION SPRINKLER OR SPEAKER STAINLESS STEEL STAIN STAIN SOUND TRANSMISSION COEFFICIENT STRUCTURE OR STRUCTURAL	T T&G TELE TLT TO TOC TOB TPD TO TYP	TONGUE AND GROOVE TELEPHONE TOILET TOP OF TOP OF CONCRETE TOP OF STEEL TOILET PAPER DISPENSER TELEPHONE/DATA TYPICAL	U UNO UIS	UNLESS NOTED OTHERWISE UNDERSIDE	V VBT VCT VIF VIF VIF VWC	VINYL BASE VINYL COMPOSITION TILE VERTICAL VERIFY IN FIELD VISION PANEL VINYL WALL COVERING	W W/ WD WDD WDD	WITH WOOD WOOD WINDOW	X X100A X100B	DOOR NUMBER - SEE DOOR SCHEDULE. WINDOW TYPE - SEE WINDOW SCHEDULE.
-------------	------------------------------	---	--	------------------------	--	--	--	--	---	----------	-------	----------	--------------------	--	---	-----------------------	--------------------------------------	--	--	--	--	---	--	--	--	---	--	-----------------	-------------------------------------	---	--	-----------------------------	--------------------------------	---------------------	--

SYMBOL KEY



SHEET INDEX

ID	NAME
G100	COVER SHEET
C100	SITE, GRADING, AND DRAINAGE PLAN
S001	STRUCTURAL NOTES & SCHEDULES
S100	ROOF FRAMING PLAN
S200	STRUCTURAL ELEVATIONS AND SECTIONS
S201	STRUCTURAL DETAILS
A001	ARCHITECTURAL SITE PLAN
A100	FLOOR PLAN + CONSTRUCTION DETAILS
A101	ROOF PLAN + CONSTRUCTION DETAILS
A200	EXTERIOR ELEVATIONS
A201	EXTERIOR ELEVATIONS
A300	BUILDING SECTION + CONSTRUCTION DETAILS
A301	BUILDING SECTION + CONSTRUCTION DETAILS
E100	ELECTRICAL SITE PLAN



6528 West North Avenue
Milwaukee, Wisconsin 53213
(414) 291-0772 phone
www.galbraithcarnahan.com

CONSULTANTS

HILLCREST PARK

2119 DAVIDSON ROAD
WAUKESHA WI 53186

DRAWING ISSUE DATE
90% PROGRESS REVIEW 01.22.21
ISSUED FOR BID 03.12.21

PROJECT NUMBER 19.26

COVER SHEET

G100

© 2021 GALBRAITH CARNAHAN ARCHITECTS, LLC

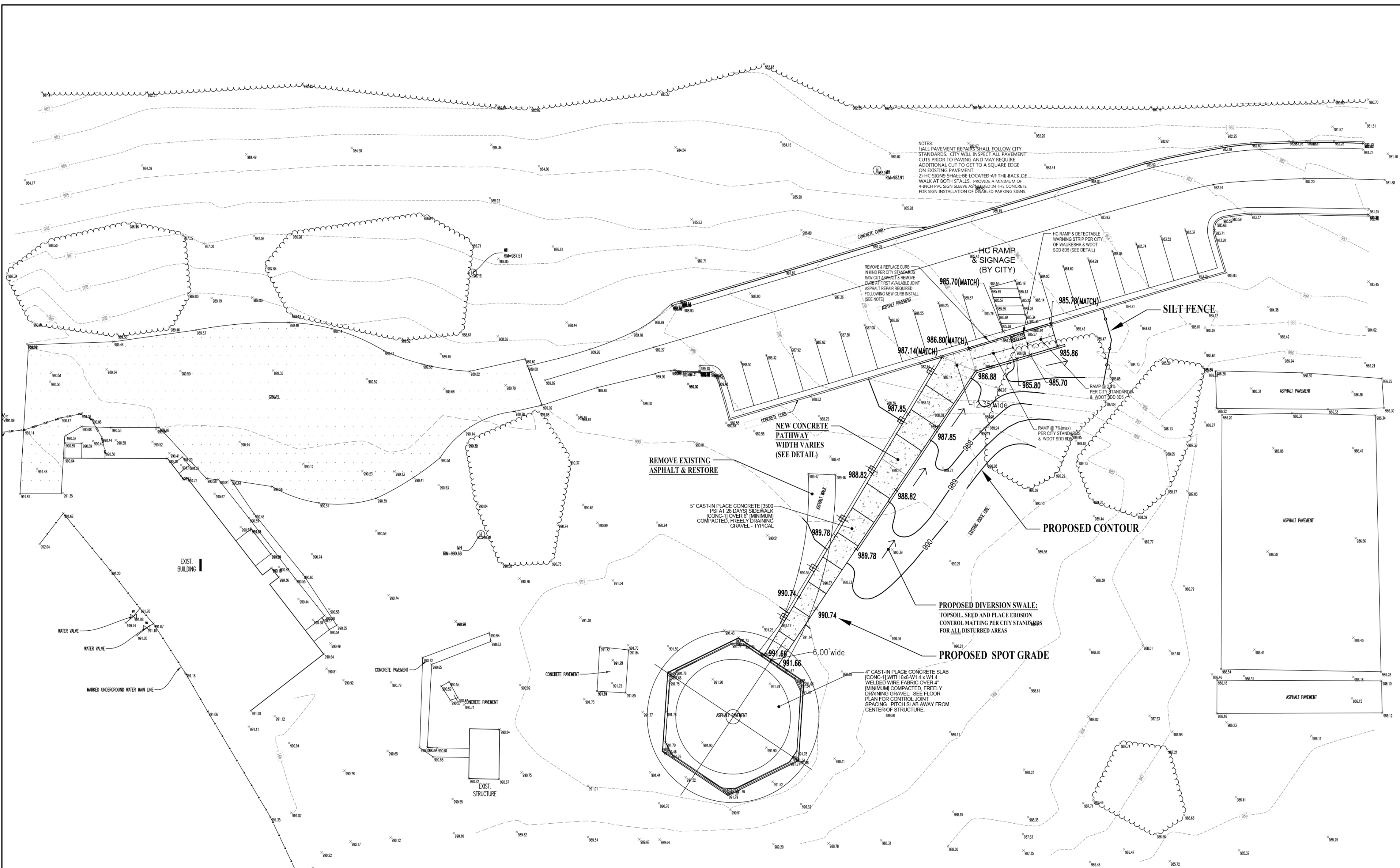


6528 West North Avenue
Milwaukee, Wisconsin 53213
(414) 291-0772 phone
www.galbraithcarnahan.com

CONSULTANTS

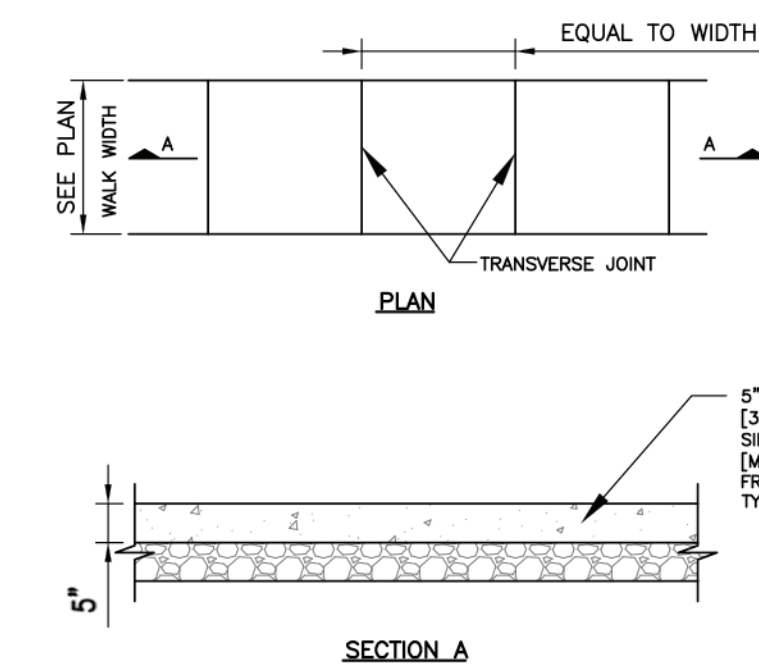
Ellema Engineering
Consultants, LLC
700 Pilgrim Parkway, S100
Elm Grove, Wisconsin 53122
(262) 719-6183 phone
www.ellemaengineering.com

**CITY OF WAUKESHA
HILLCREST PARK**



SCALE: 1" = 20'

CITY OF WAUKESHA CONCRETE SIDEWALK DETAIL:



- NOTES:**
1. TRANSVERSE JOINTS SHALL BE CUT WITH A JOINTER HAVING A RADIUS OF 1/4" AT SPACING AS INDICATED OR AS DIRECTED BY THE ENGINEER.
 2. SIDEWALK SHALL BE 6" THICK AT ALL DRIVEWAY CROSSING.

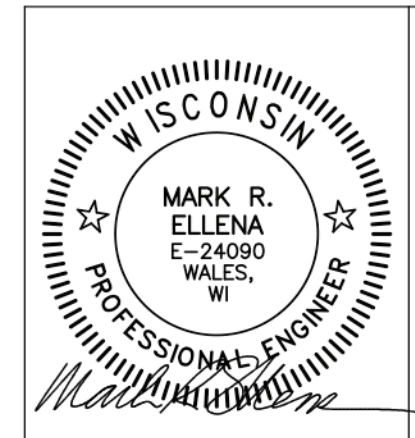
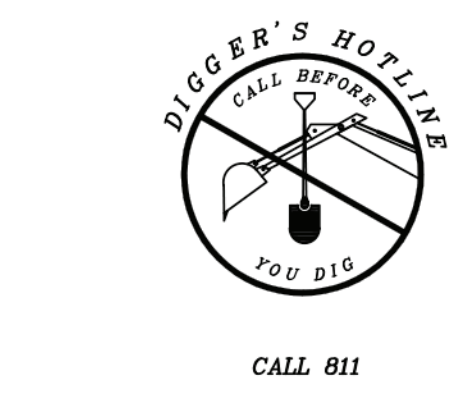
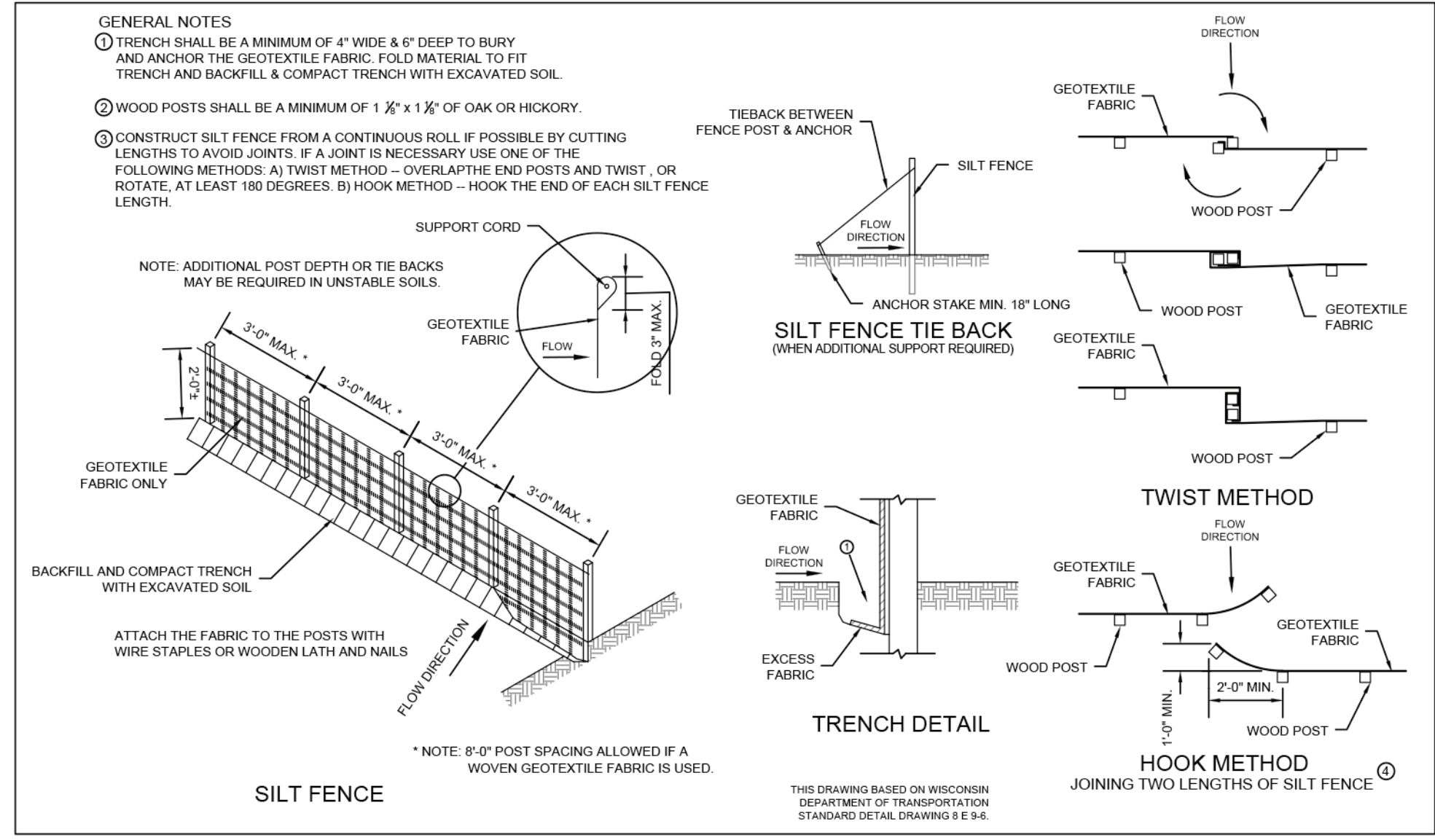
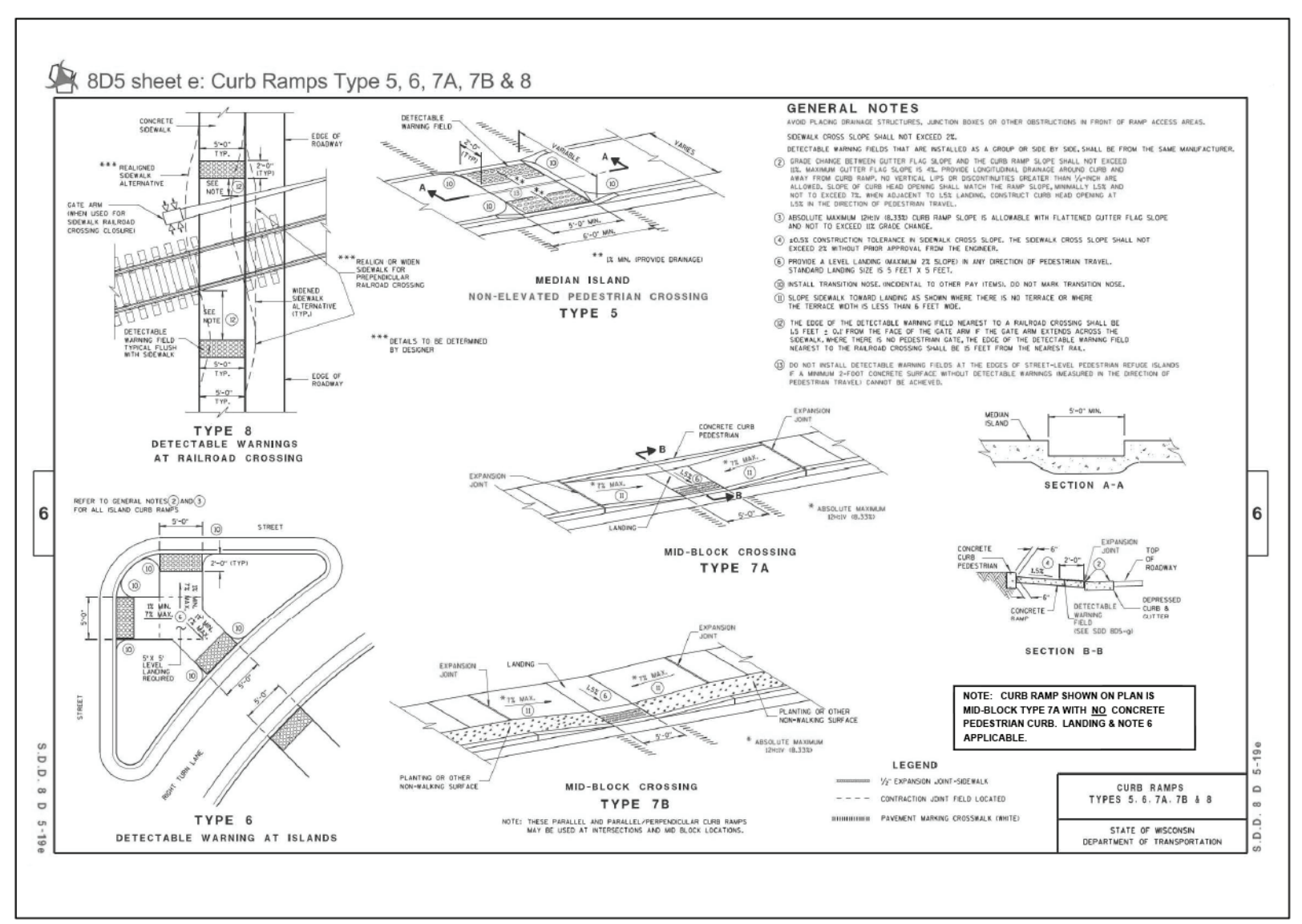
GENERAL CONSTRUCTION NOTES:

1. All erosion control measures specified on this plan shall meet the design criteria, standards and specifications as set forth in the City of Waukesha Standards for Construction, latest edition and the Department of Natural Resources Wisconsin Technical Standards.
2. All erosion control devices (i.e., silt fence, etc.), shall be installed prior to commencing any site work on the property.
3. All activities on the site shall be conducted in a logical sequence to minimize the area of bare soil exposed at any one time.
4. The contractor shall notify Diggers Hotline, all utilities City Departments, and government units whose property may be affected by the contractor's operations at least three (3) days before breaking ground. Diggers Hotline number is 811.
5. Public roads shall not be closed to traffic at any time.
6. Contractor shall be responsible for maintaining the Streets. The Streets shall be kept free of silt or dirt tracked from areas under construction. Contractor also responsible to inspect and mitigate at least at the end of any day where construction activities take place.
7. Upon completion of the work as specified, respread four (4") inches of ashoged topsoil over all disturbed areas and provide seed, fertilizer and specified erosion control fabric per the City of Waukesha & WDNR technical Standards. Waukesha Department of Public Works - Engineering Division for Erosion Control Permit required. No fee since City project.
8. Stabilization of all disturbed areas must follow City of Waukesha & NR151 erosion control prescriptive standards which require immediate temporary stabilization of disturbed areas which remain inactive longer than 7 days. Highway mix #40 shall be used for seeding with an application rate of 4.0 lbs/1000 sq. ft.
9. All erosion control devices shall be routinely inspected every seven days and within 24 hours of a rainfall greater than 0.5 inches. INSPECTION BY GENERAL CONTRACTOR.
10. Follow City of Waukesha Standards for permanent Seeding of all disturbed areas.

CONSTRUCTION PHASING SEQUENCING:

- THE GENERAL CONTRACTOR MUST OBTAIN ALL APPLICABLE LOCAL, STATE AND FEDERAL PERMITS PRIOR TO PROCEEDING WITH THE FOLLOWING CONSTRUCTION SEQUENCE AS REQUIRED BY THE WDNR AND THE CITY OF WAUKESHA:
1. INSTALL SILT FENCE AS SHOWN ON THE PLAN.
 2. REMOVE EXISTING ASPHALT PATH & STRIP TOPSOIL IN THE PROPOSED WALK AREA AND HAUL OFFSITE.
 3. CONSTRUCT PROPOSED CONCRETE PATH (CALL FOR CITY INSPECTION).
 4. STABILIZE ANY DISTURBED AREAS AS REQUIRED WITH EROSION CONTROL MATTING.
 5. FOLLOWING FINAL INSPECTION BY THE CITY AND FULL SITE STABILIZATION; REMOVE ALL TEMPORARY EROSION CONTROL MEASURES.

SITE GRADING & DRAINAGE PLAN



Ellema Engineering Consultants, LLC • 700 Pilgrim Parkway - Suite 100 • Elm Grove, WI 53122
Phone: 262-719-6183 • Fax: 866-457-2584 • Email: mellema@eceng.com

DRAWING ISSUE
REVISION #1 03.10.21

GCA PROJECT #

C100

HILLCREST PARK

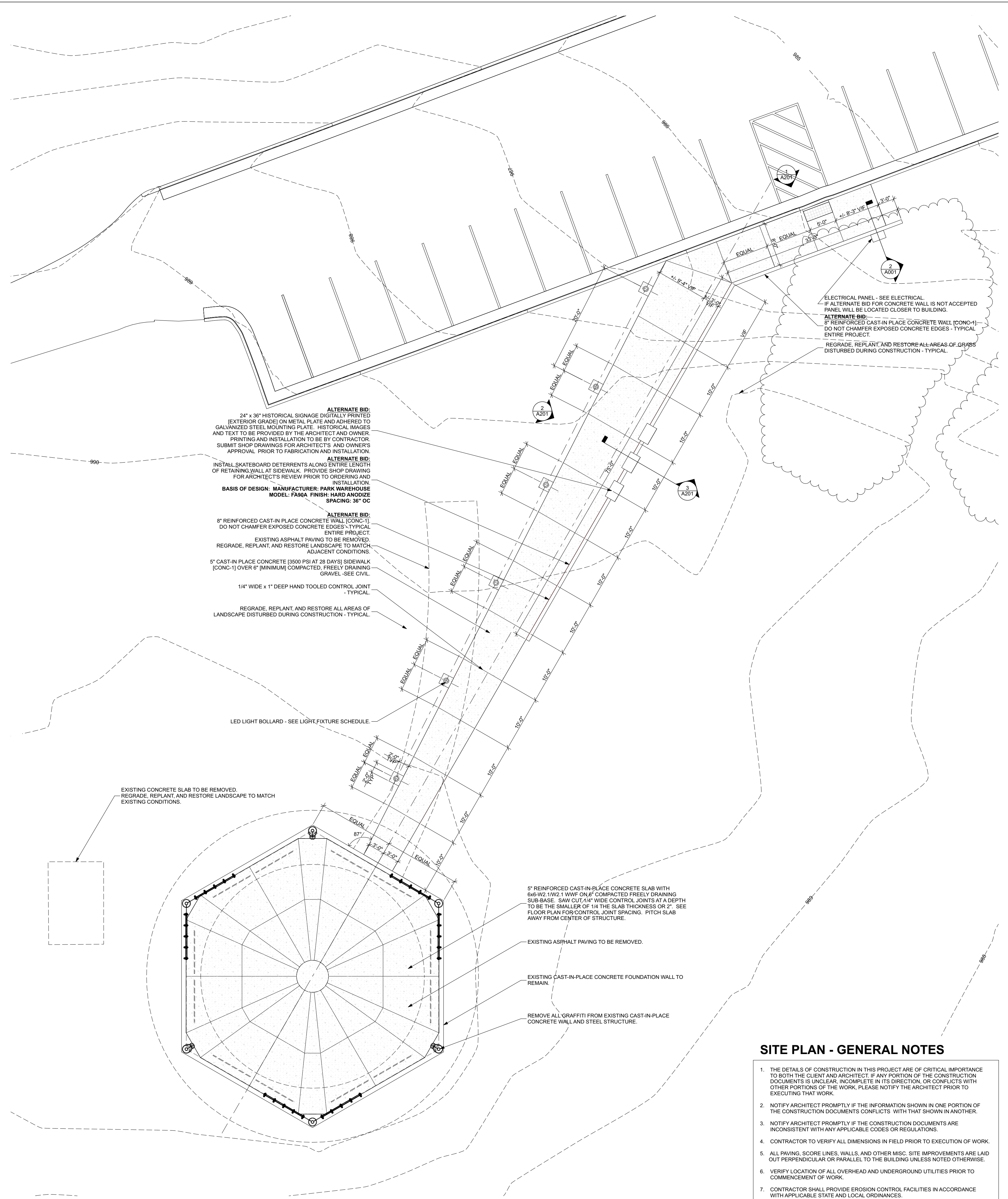
2119 DAVIDSON ROAD
WAUKESHA WI 53186

DRAWING ISSUE DATE
90% PROGRESS REVIEW 01.22.21
ISSUED FOR BID 03.12.21

PROJECT NUMBER 19.26

ARCHITECTURAL
SITE PLAN

A001



ELECTRICAL PANEL - SEE ELECTRICAL.
IF ALTERNATE BID FOR CONCRETE WALL IS NOT ACCEPTED
PANEL WILL BE LOCATED CLOSER TO BUILDING.
ALTERNATE BID: -
8" REINFORCED CAST-IN PLACE CONCRETE WALL (CONC-1)
DO NOT CHAMFER EXPOSED CONCRETE EDGES - TYPICAL
ENTIRE PROJECT.
REGRADE, REPLANT AND RESTORE ALL AREAS OF GRASS
DISTURBED DURING CONSTRUCTION - TYPICAL.

ALTERNATE BID:
24" x 36" HISTORICAL SIGNAGE DIGITALLY PRINTED
(EXTERIOR GRADE) ON METAL PLATE AND ADHERED TO
GALVANIZED STEEL MOUNTING PLATE - HISTORICAL IMAGES
AND TEXT TO BE PROVIDED BY THE ARCHITECT AND OWNER.
PRINTING AND INSTALLATION TO BE BY CONTRACTOR.
SUBMIT SHOP DRAWINGS FOR ARCHITECT'S AND OWNER'S
APPROVAL PRIOR TO FABRICATION AND INSTALLATION.
ALTERNATE BID:
INSTALL SKATEBOARD DETERRENTS ALONG ENTIRE LENGTH
OF RETAINING WALL AT SIDEWALK. PROVIDE SHOP DRAWING
FOR ARCHITECT'S REVIEW PRIOR TO ORDERING AND
INSTALLATION.
BASIS OF DESIGN: MANUFACTURER: PARK WAREHOUSE
MODEL: FAKA FINISH: HARD ANODIZE
SPACING: 36" OC

ALTERNATE BID:
8" REINFORCED CAST-IN PLACE CONCRETE WALL (CONC-1)
DO NOT CHAMFER EXPOSED CONCRETE EDGES - TYPICAL
ENTIRE PROJECT.
EXISTING ASPHALT PAVING TO BE REMOVED.
REGRADE, REPLANT, AND RESTORE LANDSCAPE TO MATCH
ADJACENT CONDITIONS.
5" CAST-IN PLACE CONCRETE (3500 PSI AT 28 DAYS) SIDEWALK
(CONC-1) OVER 6" (MINIMUM) COMPACTED, FREELY DRAINING
GRAVEL - SEE CIVIL.
1/4" WIDE x 1" DEEP HAND TOOLED CONTROL JOINT
- TYPICAL.
REGRADE, REPLANT AND RESTORE ALL AREAS OF
LANDSCAPE DISTURBED DURING CONSTRUCTION - TYPICAL.

EXISTING CONCRETE SLAB TO BE REMOVED.
REGRADE, REPLANT, AND RESTORE LANDSCAPE TO MATCH
EXISTING CONDITIONS.

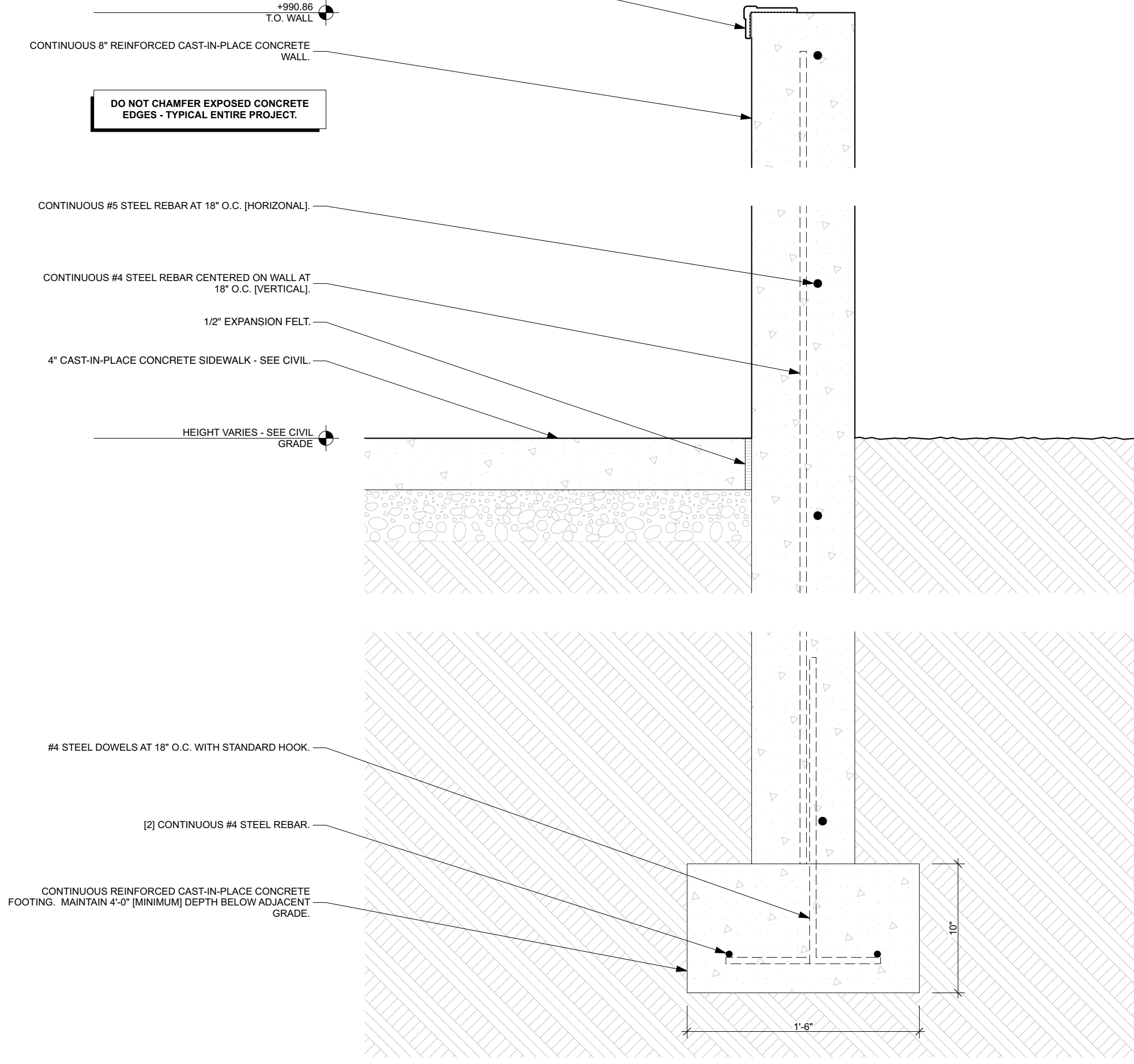
5" REINFORCED CAST-IN PLACE CONCRETE SLAB WITH
6#6-W2 1W/2 1W/2 1W/2 COMPACTED FREELY DRAINING
SUB-BASE. SAW CUT 1/4" WIDE CONTROL JOINTS AT A DEPTH
TO BE THE SMALLER OF 1/4 THE SLAB THICKNESS OR 2". SEE
FLOOR PLAN FOR CONTROL JOINT SPACING. PITCH SLAB
AWAY FROM CENTER OF STRUCTURE.

EXISTING ASPHALT PAVING TO BE REMOVED.

EXISTING CAST-IN-PLACE CONCRETE FOUNDATION WALL TO
REMAIN.

REMOVE ALL GRAFFITI FROM EXISTING CAST-IN-PLACE
CONCRETE WALL AND STEEL STRUCTURE.

INSTALL SKATEBOARD DETERRENTS ALONG ENTIRE LENGTH
OF RETAINING WALL AT SIDEWALK. PROVIDE SHOP DRAWING
FOR ARCHITECT'S REVIEW PRIOR TO ORDERING AND
INSTALLATION.
BASIS OF DESIGN:
MANUFACTURER: PARK WAREHOUSE
MODEL: FAKA
FINISH: HARD ANODIZE
SPACING: 36" OC



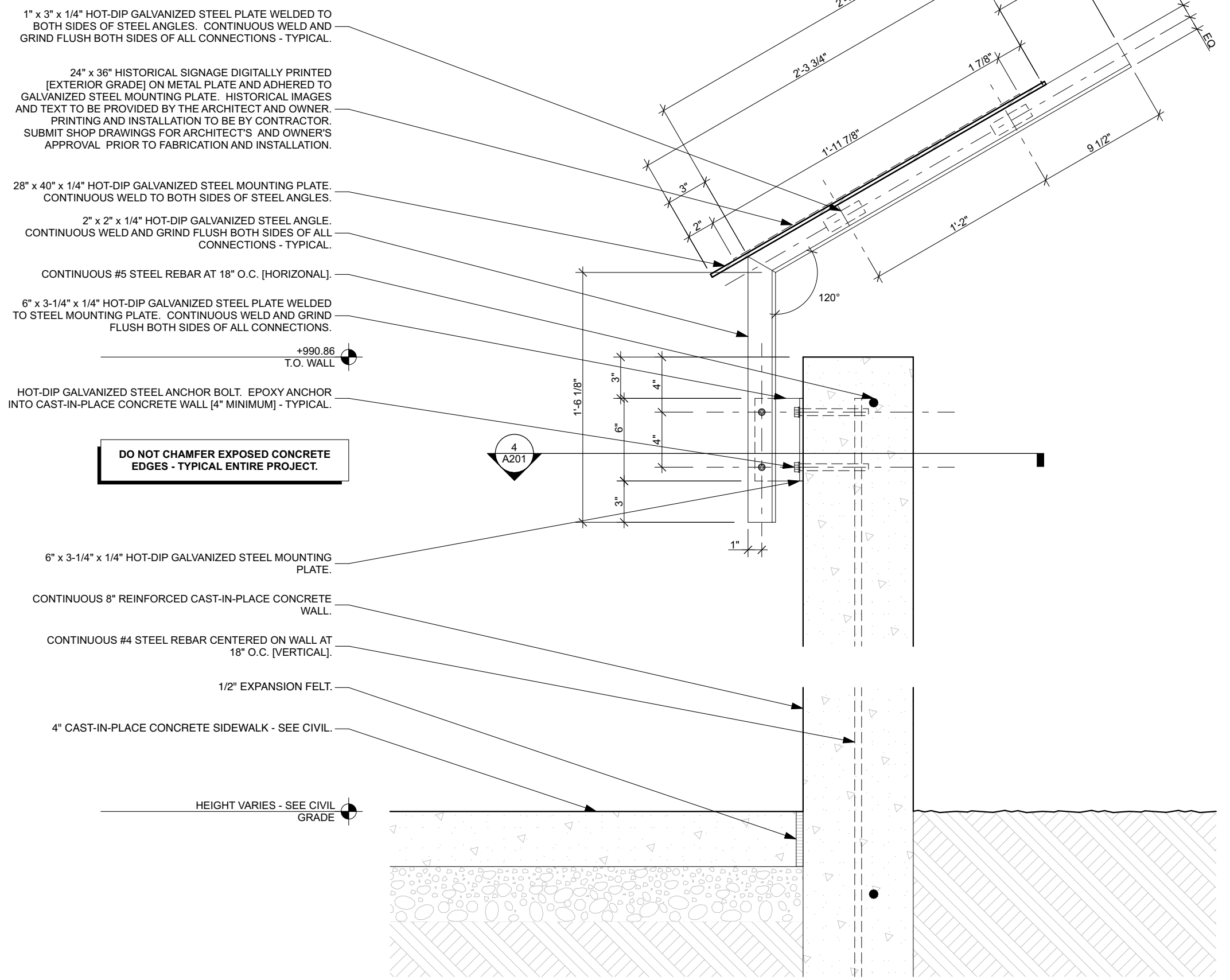
CONCRETE WALL
SCALE: 1 1/2" = 1'-0"

ARCHITECTURAL SITE PLAN
SCALE: 1" = 10'

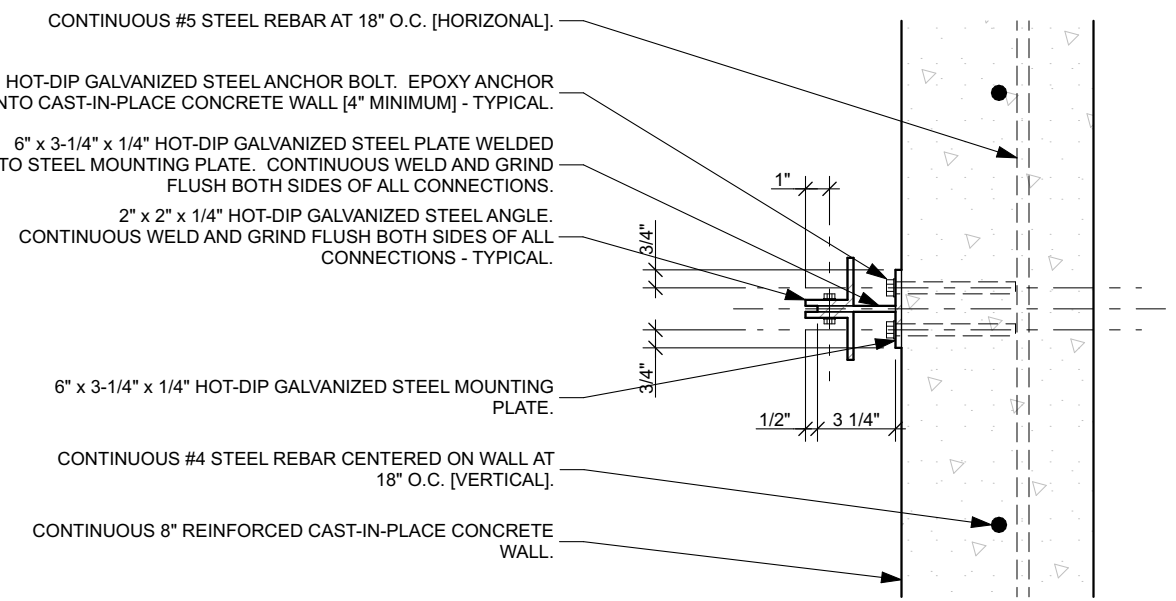
- SITE PLAN - GENERAL NOTES**
1. THE DETAILS OF CONSTRUCTION IN THIS PROJECT ARE OF CRITICAL IMPORTANCE TO BOTH THE CLIENT AND ARCHITECT. IF ANY PORTION OF THE CONSTRUCTION DOCUMENTS IS UNCLEAR, INCOMPLETE IN ITS DIRECTION, OR CONFLICTS WITH OTHER PORTIONS OF THE WORK, PLEASE NOTIFY THE ARCHITECT PRIOR TO EXECUTING THAT WORK.
 2. NOTIFY ARCHITECT PROMPTLY IF THE INFORMATION SHOWN IN ONE PORTION OF THE CONSTRUCTION DOCUMENTS CONFLICTS WITH THAT SHOWN IN ANOTHER.
 3. NOTIFY ARCHITECT PROMPTLY IF THE CONSTRUCTION DOCUMENTS ARE INCONSISTENT WITH ANY APPLICABLE CODES OR REGULATIONS.
 4. CONTRACTOR TO VERIFY ALL DIMENSIONS IN FIELD PRIOR TO EXECUTION OF WORK.
 5. ALL PAVING, SCORE LINES, WALLS, AND OTHER MISC. SITE IMPROVEMENTS ARE LAID OUT PERPENDICULAR OR PARALLEL TO THE BUILDING UNLESS NOTED OTHERWISE.
 6. VERIFY LOCATION OF ALL OVERHEAD AND UNDERGROUND UTILITIES PRIOR TO COMMENCEMENT OF WORK.
 7. CONTRACTOR SHALL PROVIDE EROSION CONTROL FACILITIES IN ACCORDANCE WITH APPLICABLE STATE AND LOCAL ORDINANCES.
 8. SEE CIVIL AND LANDSCAPE DRAWINGS FOR FULL SCOPE. ARCHITECTURAL SITE PLAN FOR REFERENCE ONLY.

EXTERIOR MATERIALS LEGEND

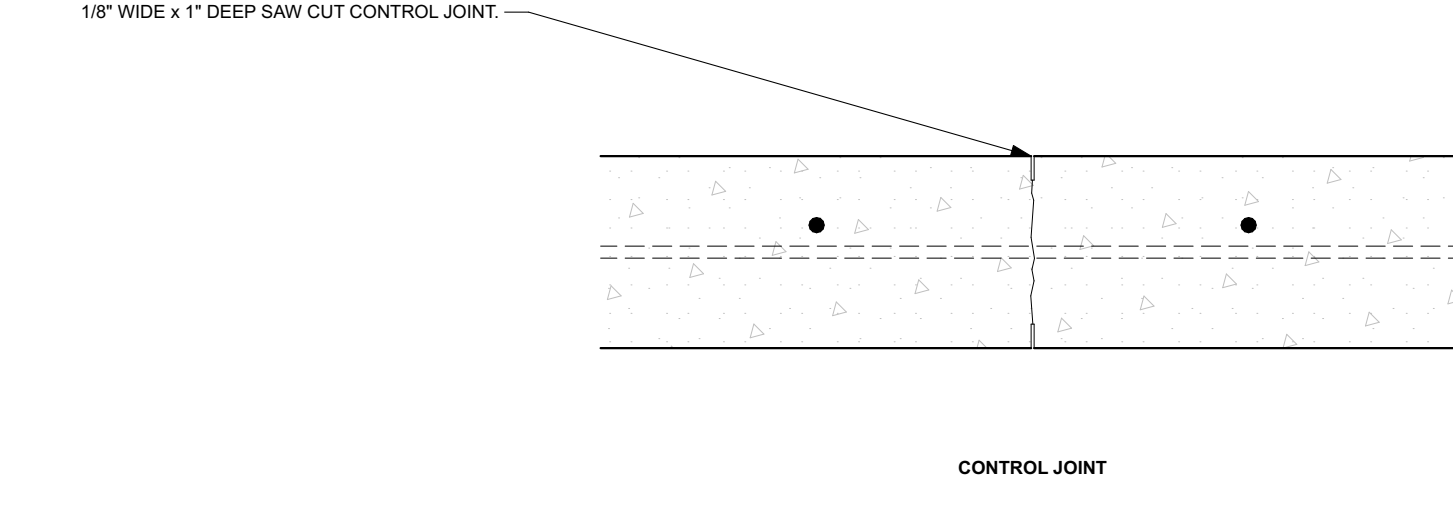
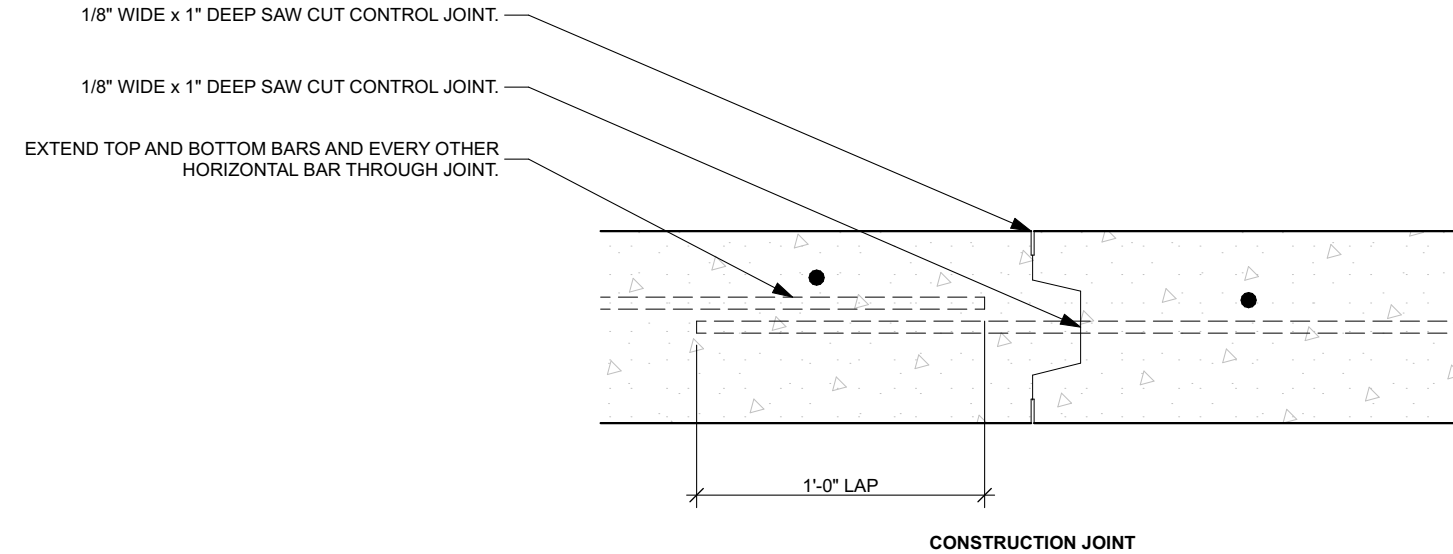
CODE	MATERIAL	MANUFACTURER	ITEM #	DESCRIPTION	COLOR	NOTES
CONC-1	SANDBLASTED CONCRETE	SOURCING BY CONTRACTOR	-	-	-	PROVIDE CONTROL SAMPLE ON CONCEALED AREA OF FOUNDATION WALL FOR ARCHITECT'S APPROVAL.
MTL-1	METAL PANEL	MILLENNIUM FORMS	STAMPED TILE	DIAMOND TILE (8'-5 1/2" x 9'-3 1/4")	COLOR: NATURAL STAINLESS STEEL (304 ALLOY) FINISH: POLISHED	METAL TILES TO BE INSTALLED AT A 45 DEGREE ANGLE IN A RADIAL PATTERN FROM THE CENTER OF THE STRUCTURE. PROVIDE CONTROL SAMPLE FOR ARCHITECT'S APPROVAL. www.millenniumforms.com
MTL-2	METAL WIRE MESH	MCNICHOLS	3805064810	SQUARE, STAINLESS STEEL, TYPE 304, WOVEN - INTERCRAMP WEAVE, 333 CRAMP STYLE, 0.5000" X 0.5000" OPENING (SQUARE), 0.063" THICK [16 GAUGE] WIRE DIAMETER, 79% OPEN AREA	-	PROVIDE CONTROL SAMPLE FOR ARCHITECT'S APPROVAL. www.mcnichols.com



3 HISTORICAL SIGNAGE SECTION
SCALE: 1 1/2" = 1'-0"

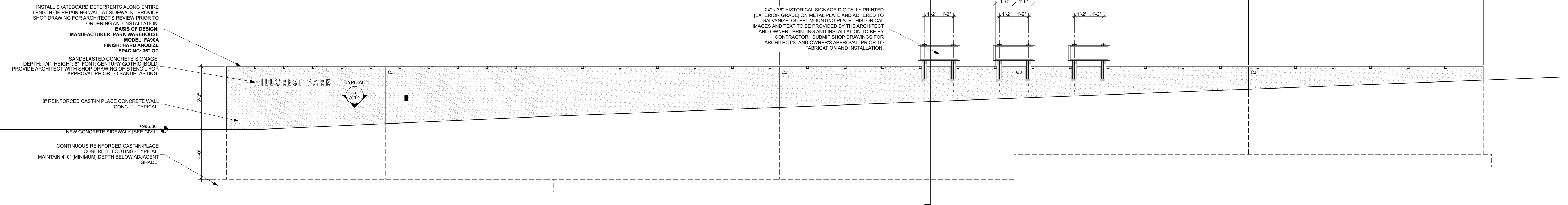


4 HISTORICAL SIGNAGE MOUNTING BRACKET
SCALE: 1 1/2" = 1'-0"

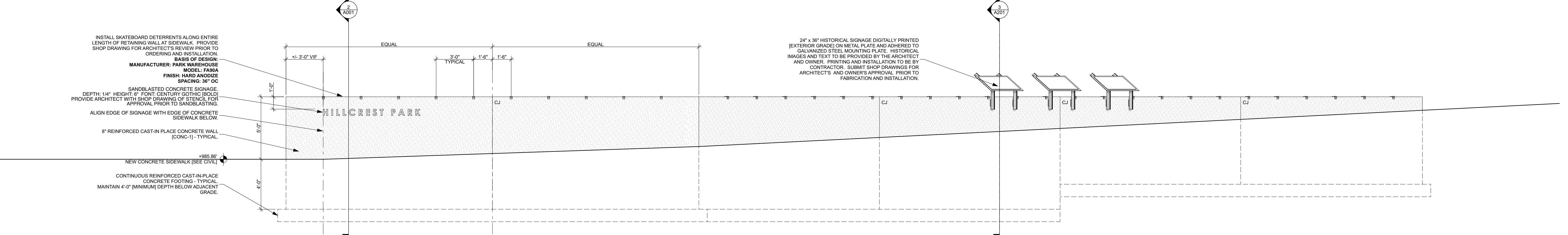


NOTES:
1. WEAKENED PLANE CONSTRUCTION JOINTS SHOULD OCCUR AT INTERVALS OF 25 FEET (SEE EXTERIOR ELEVATIONS FOR PLACEMENT) AND CONSTRUCTION JOINTS AT EVERY FOURTH JOINT.
2. SEE PLAN AND ASSOCIATED SECTIONS FOR WALL THICKNESS AND REINFORCING.
3. CENTER SINGLE LAYER OF STEEL IN WALL SECTION UNLESS NOTED OTHERWISE.

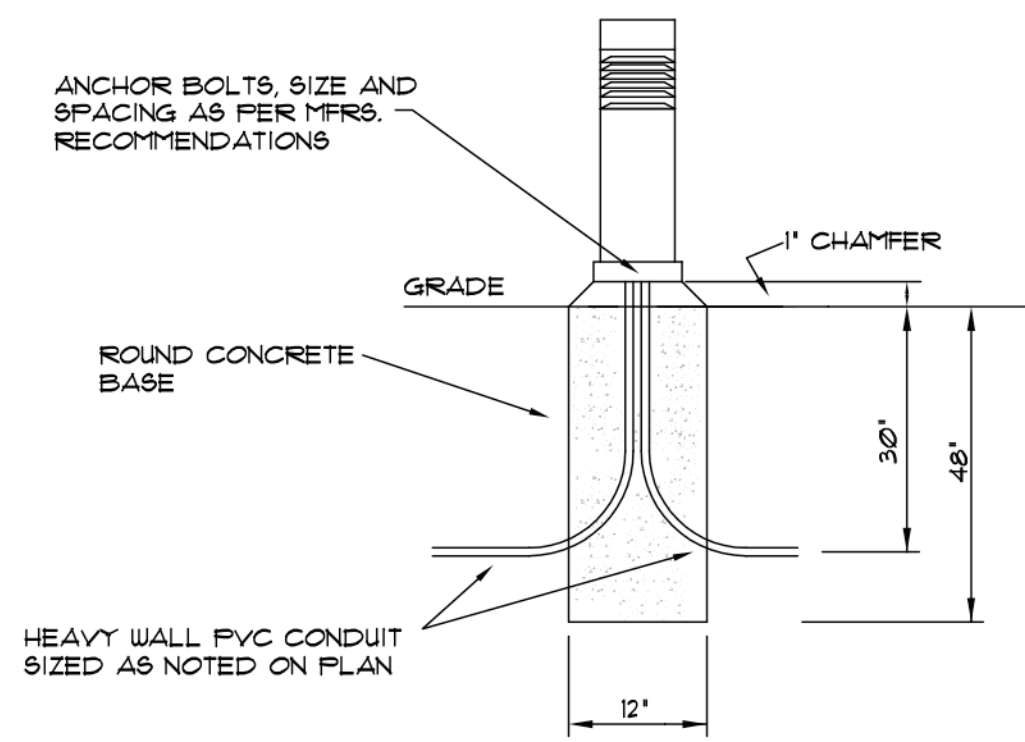
5 TYPICAL VERTICAL WALL JOINTS
SCALE: 1 1/2" = 1'-0"



2 CONCRETE WALL WEST ELEVATION
SCALE: 1/4" = 1'-0"



1 CONCRETE WALL NORTH ELEVATION
SCALE: 1/4" = 1'-0"



FIXTURE TYPE 'GB' MOUNTING DETAIL
NOT TO SCALE

NOTE:
CONDUIT AND ANCHOR BOLTS PROJECTIONS PER FIXTURE MANUFACTURER'S SPECIFICATIONS. ALL WORK BY E.C.

LIGHTING FIXTURE SCHEDULE								
TYPE	LAMP* / CAT.*	DESCRIPTION	MANUFACTURER	CATALOG NO.	DIFFUSER	FINISH	MOUNTING	NOTES
GA	W/UNIT	LED WALL BRACKET	SPI LIGHTING	SEW21458FTL56W120-2T13000KDFBRKDFHTAN04	ACRYLIC	SILVER	BRACKET	1, 2, 3
GB	W/UNIT	LED BOLLARD	ALCON LIGHTING	90483	ACRYLIC	SILVER	GROUND	1, 2, 3

LIGHTING FIXTURE SCHEDULE NOTES:

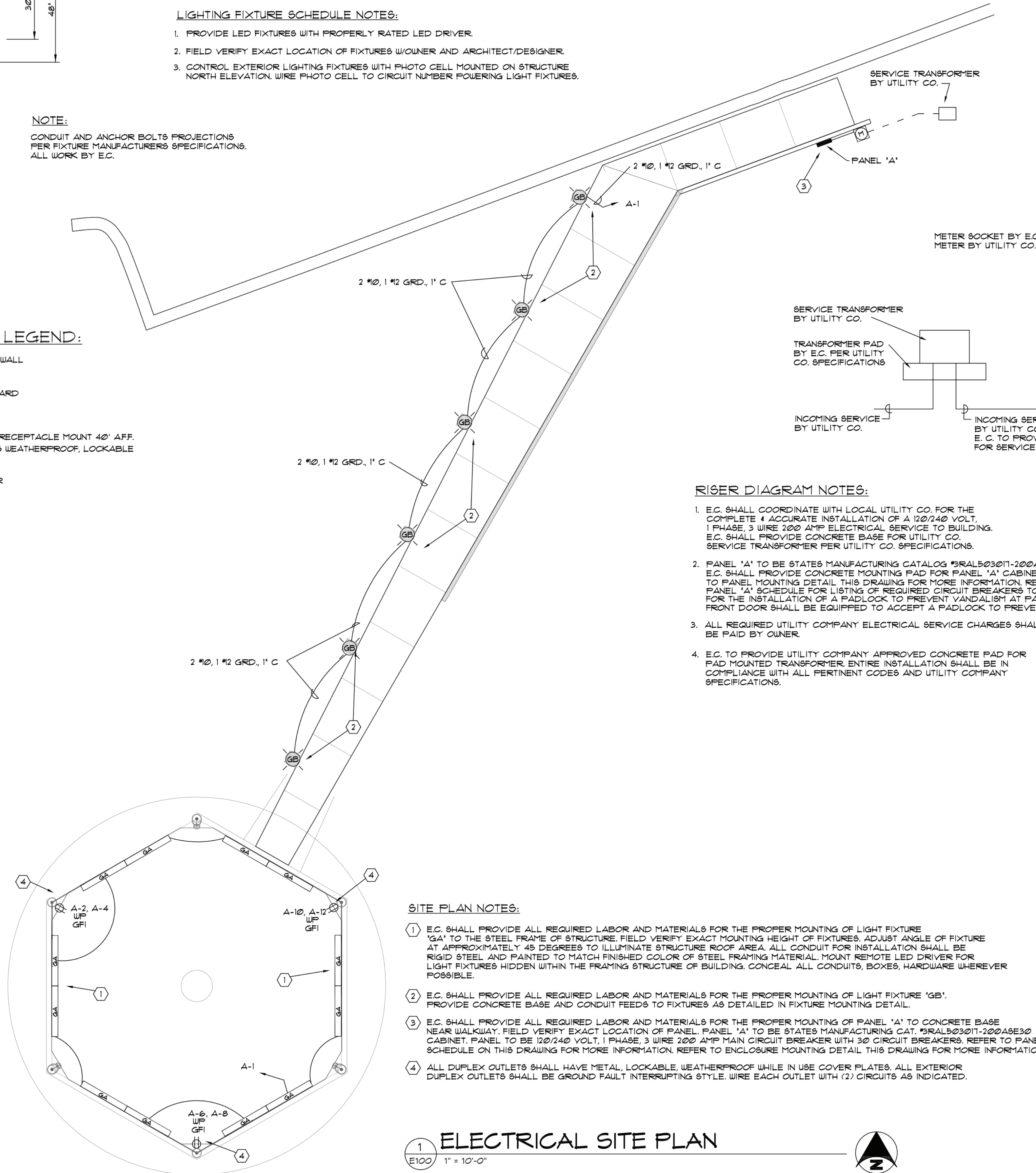
1. PROVIDE LED FIXTURES WITH PROPERLY RATED LED DRIVER.
2. FIELD VERIFY EXACT LOCATION OF FIXTURES W/OWNER AND ARCHITECT/DESIGNER.
3. CONTROL EXTERIOR LIGHTING FIXTURES WITH PHOTO CELL MOUNTED ON STRUCTURE NORTH ELEVATION. WIRE PHOTO CELL TO CIRCUIT NUMBER POWERING LIGHT FIXTURES.

PANEL SCHEDULE 'A'					
NO.	DESCRIPTION	CKT. BRKR	CKT. BRKR	DESCRIPTION	NO.
1	EXTERIOR LIGHTING	20A/1P	20A/1P	EXTERIOR GFI OUTLETS	2
3	SPARE	20A/1P	20A/1P	EXTERIOR GFI OUTLETS	4
5	SPARE	20A/1P	20A/1P	EXTERIOR GFI OUTLETS	6
7	SPARE	20A/1P	20A/1P	EXTERIOR GFI OUTLETS	8
9	SPARE	20A/1P	20A/1P	EXTERIOR GFI OUTLETS	10
11	SPARE	20A/1P	20A/1P	EXTERIOR GFI OUTLETS	12
13	SPARE	20A/1P	20A/1P	SPARE	14
15	SPARE	20A/1P	20A/1P	SPARE	16
17	SPARE	20A/1P	20A/1P	SPARE	18
19	SPACE			SPACE	20
21	SPACE			SPACE	22
23	SPACE			SPACE	24
25	SPACE			SPACE	26
27	SPACE			SPACE	28
29	SPACE			SPACE	30

VOLTAGE: 120/240
AMPERAGE: 200 MCB
PHASE: 1

ELECTRICAL LEGEND:

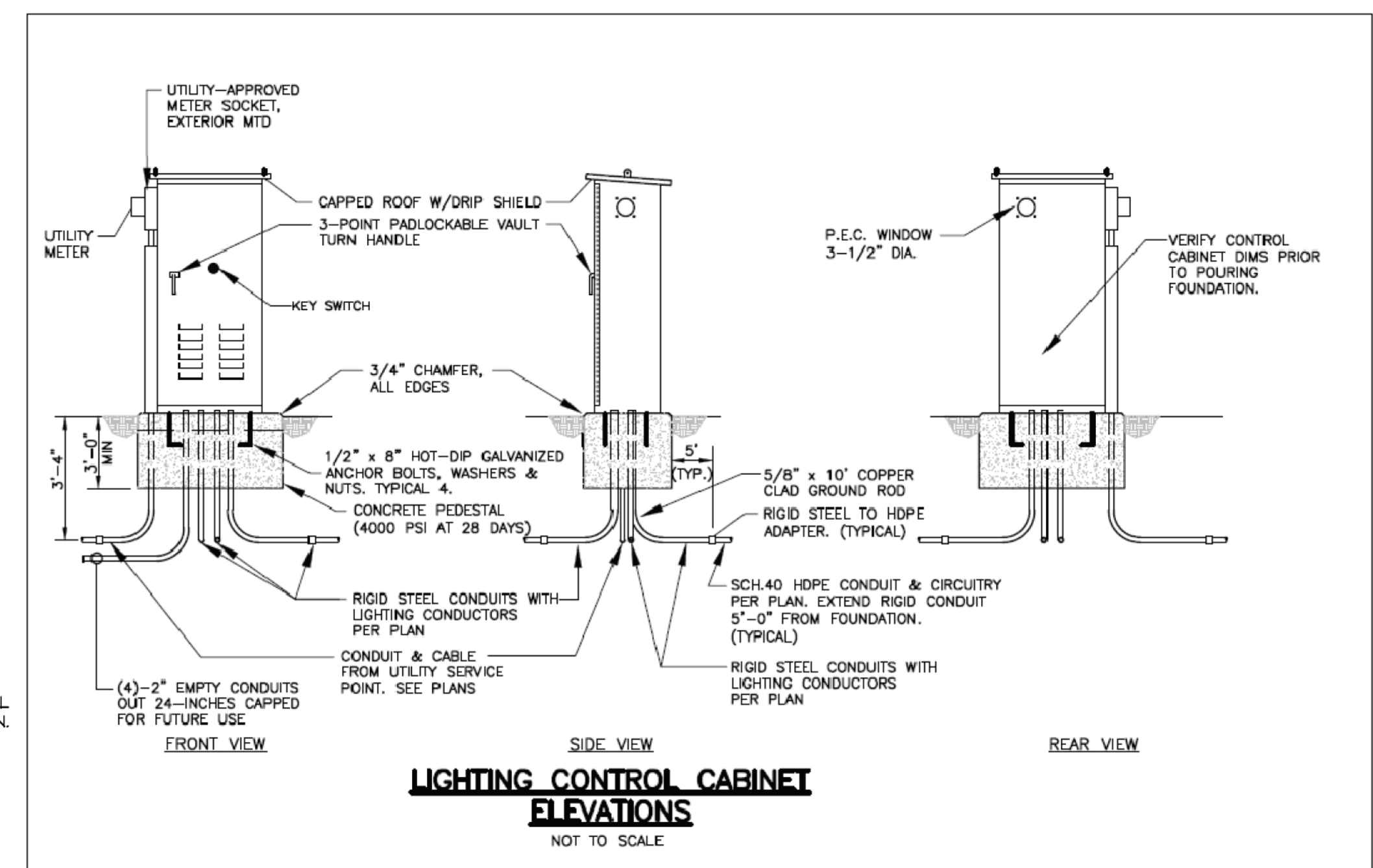
- GA BRACKET MOUNTED LED WALL LIGHT FIXTURE
- GB GROUND MOUNTED BOLLARD LIGHT FIXTURE
- GFI GFI GROUND FAULT DUPLEX RECEPTACLE MOUNT 40' AFF. IN PAVILION W/P DEPICTS WEATHERPROOF, LOCKABLE METAL COVER PLATE.
- POWER PANEL SEE RISER DIAGRAM FOR DETAILS
- CIRCUIT WIRING
- JUNCTION BOX



RISER DIAGRAM NOTES:

1. E.C. SHALL COORDINATE WITH LOCAL UTILITY CO. FOR THE COMPLETE & ACCURATE INSTALLATION OF A 120/240 VOLT, 1 PHASE, 3 WIRE 200 AMP ELECTRICAL SERVICE TO BUILDING. E.C. SHALL PROVIDE CONCRETE BASE FOR UTILITY CO. SERVICE TRANSFORMER PER UTILITY CO. SPECIFICATIONS.
2. PANEL 'A' TO BE STATES MANUFACTURING CATALOG #3RAL503011-200ASE30. E.C. SHALL PROVIDE CONCRETE MOUNTING PAD FOR PANEL 'A' CABINET. REFER TO PANEL MOUNTING DETAIL THIS DRAWING FOR MORE INFORMATION. REFER TO PANEL 'A' SCHEDULE FOR LISTING OF REQUIRED CIRCUIT BREAKERS TO BE INSTALLED. FOR THE INSTALLATION OF A PADLOCK TO PREVENT VANDALISM AT PANEL ENCLOSURE FRONT DOOR SHALL BE EQUIPPED TO ACCEPT A PADLOCK TO PREVENT VANDALISM OF PANEL.
3. ALL REQUIRED UTILITY COMPANY ELECTRICAL SERVICE CHARGES SHALL BE PAID BY OWNER.
4. E.C. TO PROVIDE UTILITY COMPANY APPROVED CONCRETE PAD FOR PAD MOUNTED TRANSFORMER ENTIRE INSTALLATION SHALL BE IN COMPLIANCE WITH ALL PERTINENT CODES AND UTILITY COMPANY SPECIFICATIONS.

RISER DIAGRAM
SCALE: NONE



LIGHTING CONTROL CABINET ELEVATIONS
NOT TO SCALE

SITE PLAN NOTES:

1. E.C. SHALL PROVIDE ALL REQUIRED LABOR AND MATERIALS FOR THE PROPER MOUNTING OF LIGHT FIXTURE 'GA' TO THE STEEL FRAME OF STRUCTURE. FIELD VERIFY EXACT MOUNTING HEIGHT OF FIXTURES. ADJUST ANGLE OF FIXTURE AT APPROXIMATELY 45 DEGREES TO ILLUMINATE STRUCTURE ROOF AREA. ALL CONDUIT FOR INSTALLATION SHALL BE RIGID STEEL AND PAINTED TO MATCH FINISHED COLOR OF STEEL FRAMING MATERIAL. MOUNT REMOTE LED DRIVER FOR LIGHT FIXTURES HIDDEN WITHIN THE FRAMING STRUCTURE OF BUILDING. CONCEAL ALL CONDUITS, BOXES, HARDWARE WHEREVER POSSIBLE.
2. E.C. SHALL PROVIDE ALL REQUIRED LABOR AND MATERIALS FOR THE PROPER MOUNTING OF LIGHT FIXTURE 'GB'. PROVIDE CONCRETE BASE AND CONDUIT FEEDS AS DETAILED IN FIXTURE MOUNTING DETAIL.
3. E.C. SHALL PROVIDE ALL REQUIRED LABOR AND MATERIALS FOR THE PROPER MOUNTING OF PANEL 'A' TO CONCRETE BASE NEAR WALKWAY. FIELD VERIFY EXACT LOCATION OF PANEL. PANEL 'A' TO BE STATES MANUFACTURING CAT. #3RAL503011-200ASE30 CABINET. PANEL TO BE 120/240 VOLT, 1 PHASE, 3 WIRE 200 AMP MAIN CIRCUIT BREAKER WITH 30 CIRCUIT BREAKERS. REFER TO PANEL SCHEDULE ON THIS DRAWING FOR MORE INFORMATION. REFER TO ENCLOSURE MOUNTING DETAIL THIS DRAWING FOR MORE INFORMATION.
4. ALL DUPLEX OUTLETS SHALL HAVE METAL, LOCKABLE, WEATHERPROOF WHILE IN USE COVER PLATES. ALL EXTERIOR DUPLEX OUTLETS SHALL BE GROUND FAULT INTERRUPTING STYLE. WIRE EACH OUTLET WITH (2) CIRCUITS AS INDICATED.

1 ELECTRICAL SITE PLAN
1" = 10'-0"

