

PARKS, RECREATION & FORESTRY

1900 AVIATION DRIVE
WAUKESHA, WISCONSIN 53188-2471
TELEPHONE 262/524-3737 FAX 262/524-3713

Ron Grall, Director
rgrall@ci.waukesha.wi.us

February 15, 2018

To: Parks, Recreation & Forestry Board (PRFB)

RE: PRFB Agenda Item - Approve the purchase of Ford 550 Dump truck

This request is for the final approval to purchase a F550 Dump truck, through Ewald Automotive and the bed through Casper Truck and Equipment, in the amount of **\$ 54,383**. The replacement machine is a F550 4wd Dump truck with a Stainless-steel box and 2 under side mount tool boxes. It also will be set up with a plow package for future use. This is a similar replacement for what is currently being used. This machine was bid out through the Vendor net system, which is formerly the State Vehicle Value Bid.

Thank you,

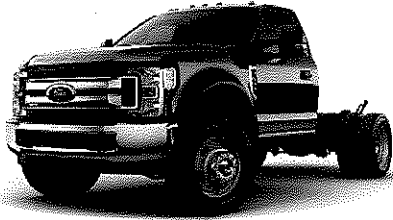
Keith Johnson
Grounds Maintenance Supervisor



Place

Prepared For:
KEITH JOHNSON
CITY OF WAUKESHA
1900 AVIATION DR
WAUKESHA, WI 53186
Phone: (262) 524-3722
Email: kjohnson@waukesha-wi.gov

Prepared By:
SCOTT KUSSOW
EWALD AUTOMOTIVE GROUP, LL
36833 E. WISCONSIN AVE.
OCONOMOWOC, WI 53066
Phone: (262) 567-5555
Fax: (262) 560-1303
Email: skfleet@ewaldauto.com



2018 Fleet/Non-Retail Ford Super Duty F-550 DRW XL 4WD Reg Cab 169"

QUOTE WORKSHEET

QUOTE WORKSHEET - 2018 Fleet/Non-Retail F5H XL 4WD Reg Cab 169" WB 84" CA

MSRP	\$41,950.00
Destination Charge	\$1,295.00
Optional Equipment	\$4,725.00
Dealer Advertising	\$0.00
PRE-TAX ADJUSTMENTS:	
STATE OF WISCONSIN MUNICIPAL DISCOUNT	(\$9,505.00)
Total Pre-Tax Adjustments	(\$9,505.00)
Taxable Price	\$38,465.00
TOTAL	\$38,465.00

Customer Signature / Date

Dealer Signature / Date

2018 FORD F550 REGULAR CAB 4WD C&C 84 CA TO YOUR SPECS AS DETAILED WITH SNOW PLOW PREP. REGISTRATION FEES ARE EXTRA. DELIVERY CAN BE ANTICIPATED 90-120 DAYS FROM RECEIPT OF YOUR ORDER. PAYMENT TERMS ARE NET TEN DAYS.

FINAL ORDER DATE 3/2/18.

Report content is based on current data version referenced. Any performance-related calculations are offered solely as guidelines. Actual unit performance will depend on your operating conditions.

GM AutoBook, Data Version: 530.0, Data updated 2/13/2018
© Copyright 1986-2012 Chrome Data Solutions, LP. All rights reserved.
Customer File: CELL: (262) 993-2083



700 Randolph Drive
Appleton, WI 54913

At 41 & N, Little Chute, WI

Phone: (920) 687-1111

Fax: (920) 687-1122

Green Bay (920) 983-1111

Milwaukee: (262) 544-5404

www.casperstruck.com

: Waukesha Parks Department

:

:

:

: RE: 84"CA F550 2018

=====
Date: January 2, 2018 Time: 4:18 PM Terms: **Due on Delivery** Contact: Keith
Phone # (262) 524-3722 E-mail: kjohnson@waukesha-wi.gov
=====

**** Sales Quotation ****

1. Henderson Mark III 11' Stainless Steel Dump Body

- A. Unibody design (cross-memberless)
- B. 11' long x 85" I.D. / 95" O.D.
- C. 13" fixed sides
- D. Subframe mounted dump body with Trunion mounted hoist
- E. Installed with push button electric control pendant
- F. 3.1 / 4.6 cubic yard capacity
- G. 12 gauge 201 stainless steel 53" straight headsheet has 85" wide integral cab shield and two (2) integral windows
- H. 5" I-beam longitudinals, "western" style understructure, no X-members
- I. One piece grade 50 / 65,000 psi 3/16" floor with 2" side to floor radius
- J. Double wall 10 gauge 201 stainless steel sides with boxed top rails
- K. Double wall 10 gauge 201 stainless steel tailgate sheet with sloped top rail on standard tailgate only, full perimeter boxing, flush mount off set tailgate hinge plates with easy release pins
- L. Full depth 201 stainless steel rear corner posts
- M. Quick release handle offset toward curb side
- N. Light kit with one piece wiring harness for clearance lights and stop, turn, tail lights in rear corner posts
- O. Body is chemically cleaned with a phosphate solution natural 2B stainless steel finish, underside factory black
- P. One (1) year dump body warranty
- Q. Hitch plate with 2" receiver tube, D-rings, and 7RV trailer plug
- R. Back up alarm
- S. Installed with Casper's Mudflap's

2. Additional Equipment

- A. RC Industries 24" x 18" x 18" Steel powder coated black toolbox driver and passenger side
- B. Whelen R2LPPA strobe light mounted on top of cab guard with leveling bracket
- C. VTX609A mini strobe lights mounted in rear corners or dump body
- D. Install factory back up camera
- E. Western Equipment, everything needed to connect customers V-Plow to chassis
- F. Installed

Total: \$15,918.00

Option:

- A. Drop sides in lieu of fixed sides
- B. LED S/T/T lights in lieu of standard

Add: \$267.00

Add: \$283.00

=====
ALL SALES TAX AND FET TAX WILL BE ADDED
=====

Submitted by: Tony Myslicki 1-2-2018 Quote firm 30 days. Terms: Net on delivery. PO # _____

Quote and terms accepted by: _____ Title: _____ Date accepted _____

THANK YOU for the opportunity to submit our quote for your consideration

NOTE: Not the actual truck, picture is for reference only.

