

WILDECK INC.

OFFICE ADDITION

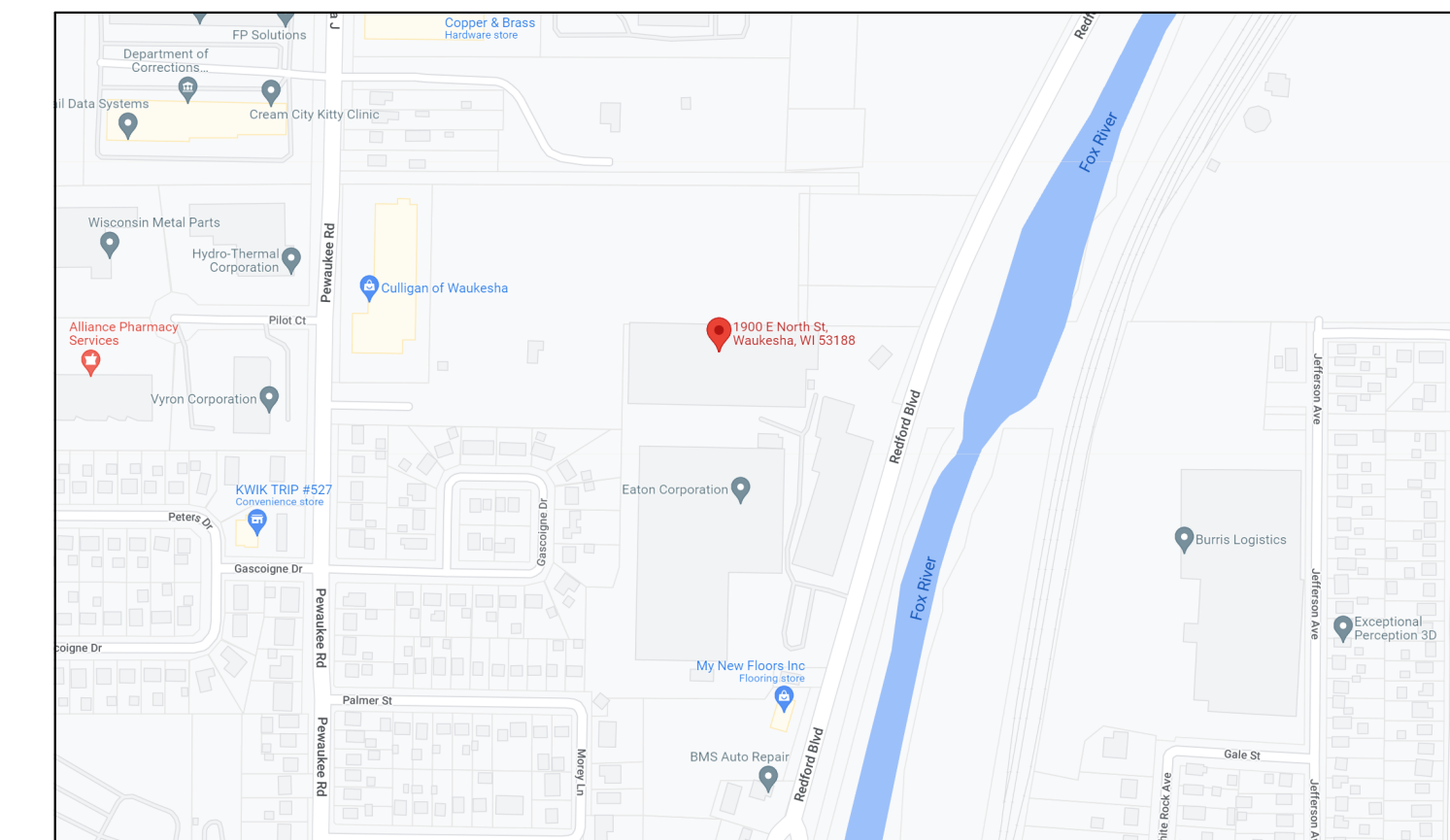
1900 E NORTH ST
WAUKESHA, WI 53188

OWNER	CLIENT	GENERAL CONTRACTOR	ARCHITECT	CIVIL ENGINEER	STRUCTURAL ENGINEER
TED WELLER NORTH STREET PLANT 15, LLC	WILDECK INC 405 COMMERCE ST WAUKESHA, WI 53186 P: 262.549.4000	VJS CONSTRUCTION SERVICES W233 N2847 ROUNDY CIRCLE WEST PEWAUKEE, WI 53072 P: 262.542.9000 WWW.VJSCS.COM	KATHERINE KAWCZYNSKI VJS CONSTRUCTION SERVICES W233 N2847 ROUNDY CIRCLE WEST PEWAUKEE, WI 53072 P: 262.542.9000 WWW.VJSCS.COM	EXCEL ENGINEERING, INC 100 CAMELOT DR FOND DU LAC, WI 54935 P: 820.926.9800	EXCEL ENGINEERING, INC 100 CAMELOT DR FOND DU LAC, WI 54935 P: 820.926.9800



WILDECK INC.
OFFICE ADDITION
1900 E NORTH ST
WAUKESHA, WI 53188

SHEET INDEX	
T1.01	TITLE SHEET
G1.04	OFFICE AREA PLANS
A1.01	OVERALL FIRST & SECOND FLOOR PLANS
A1.02	OVERALL THIRD FLOOR PLAN
A1.21	OVERALL OFFICE ADDITION PLANS
A4.01	EXTERIOR ELEVATIONS
A5.01	BUILDING SECTIONS
A5.02	BUILDING SECTIONS
A5.11	WALL SECTIONS
AR1.01	ARCHITECTURAL RENDERINGS
AR1.02	ARCHITECTURAL RENDERINGS
11	



1 PROJECT LOCATION
N.T.S.

DRAWINGS AND SPECIFICATIONS AS INSTRUMENTS OF SERVICE ARE THE PROPERTY OF VJS CONSTRUCTION SERVICES. THE ARCHITECT/ENGINEER ASSUMES NO RESPONSIBILITY OR LIABILITY FOR THE USE OF THESE PLANS FOR ANY PROJECT OTHER THAN SPECIFICALLY AUTHORIZED BY THE ASSAULT. SIGNED AND SEALED FOR SUCH SPECIFIC LOCATION IN THE STATE, PROVINCE, OR TERRITORY SHOWN ON THE SEAL.

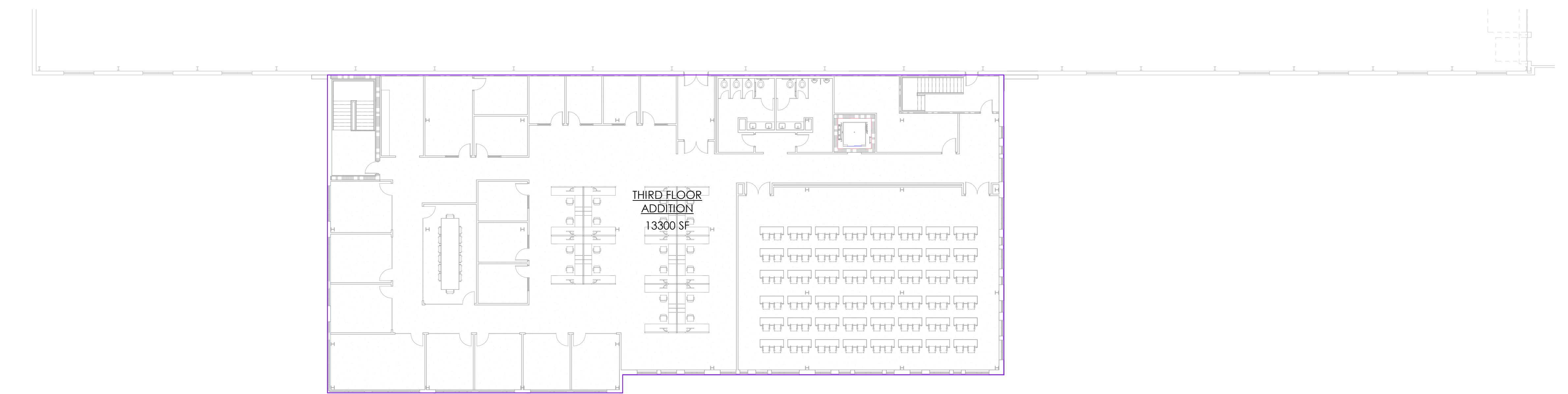
ISSUANCE & REVISIONS	
4/29/22	FIRE PUMP PERMIT SET
7/5/22	CITY PRELIM REVIEW
8/3/22	CITY FINAL REVIEW
9/13/22	CITY FINAL REVIEW

PROJECT NUMBER	8210068
PROJECT ISSUED	1/3/2022
DRAWN BY	BDC
CHECKED BY	KAK
SCALE	N.T.S.

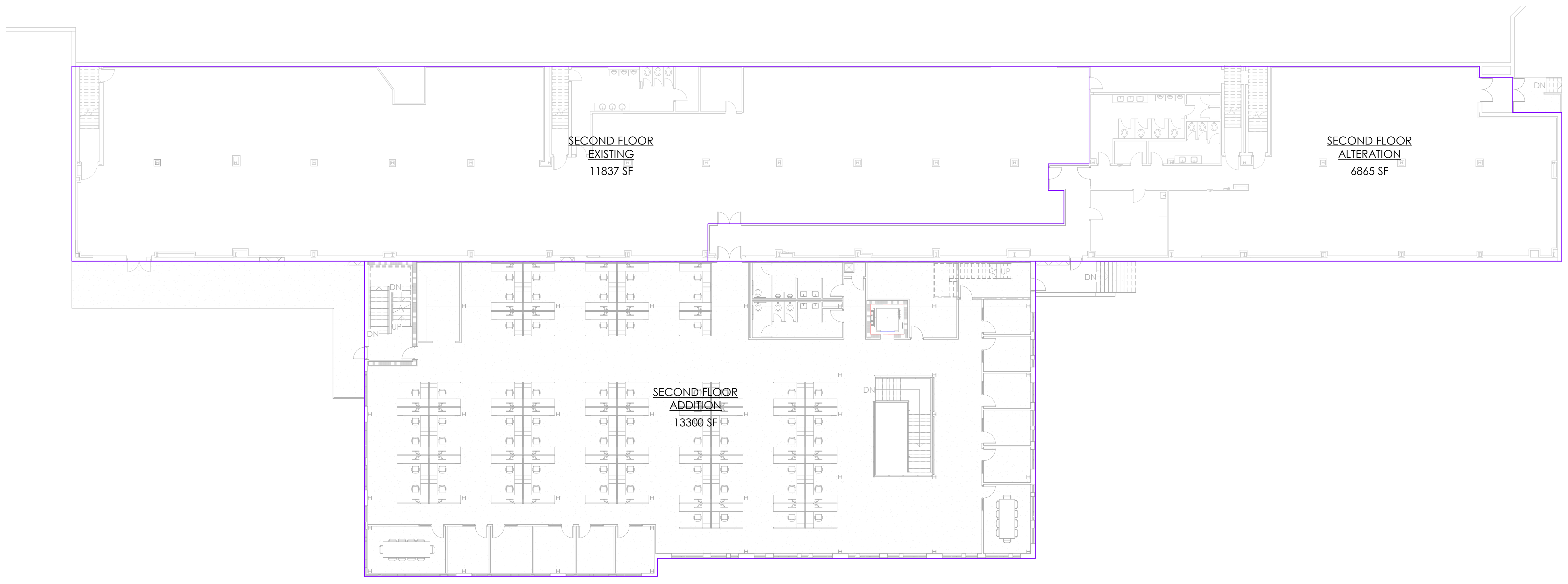
TITLE SHEET

T1.01

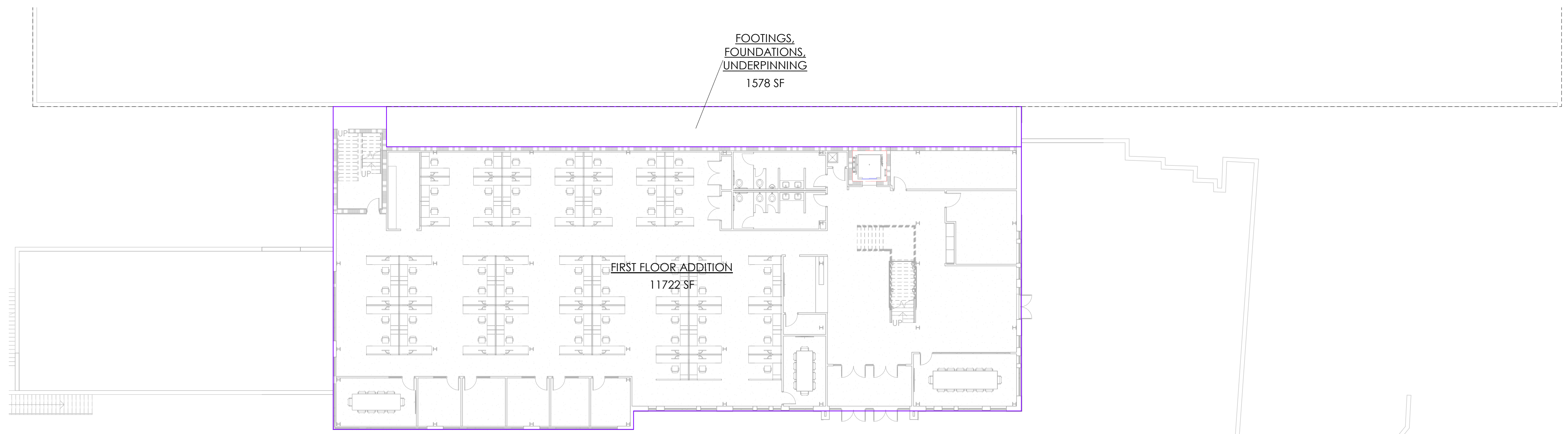
NOT FOR CONSTRUCTION



③ OFFICE ADDITION THIRD FLOOR
1/16" = 1'-0"



② OFFICE ADDITION SECOND FLOOR
1/16" = 1'-0"



① OFFICE ADDITION FIRST FLOOR
1/16" = 1'-0"

TOTAL ADDITION GSF: 39,900 SF

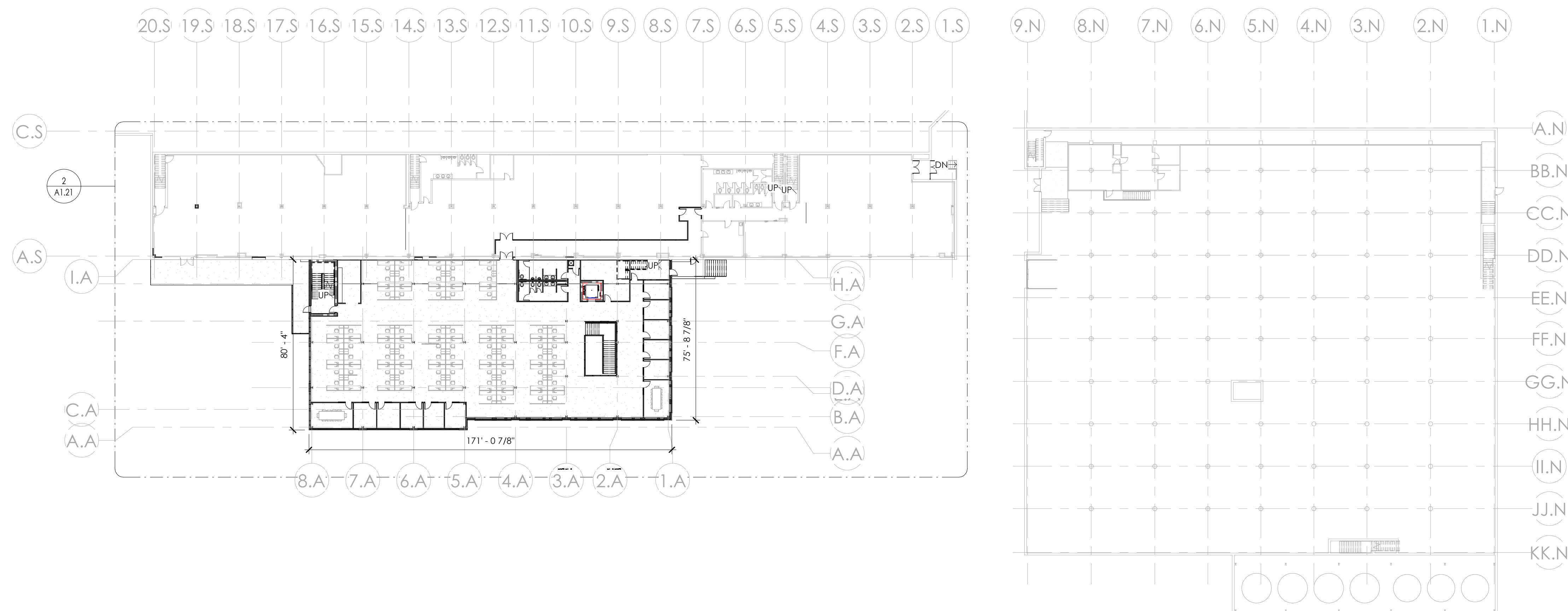
DRAWINGS AND SPECIFICATIONS AS INSTRUMENTS OF SERVICE ARE THE PROPERTY OF VJS CONSTRUCTION SERVICES. THE ARCHITECT/ENGINEER ASSUMES NO RESPONSIBILITY OR LIABILITY FOR THE USE OF THESE PLANS FOR ANY PROJECT OTHER THAN SPECIFICALLY AUTHORIZED BY THE LAND-SCAPED AND SEALED FOR SUCH SPECIFIC LOCATION IN THE STATE, PROVINCE, OR TERRITORY SHOWN ON THE SEAL.

ISSUANCE & REVISIONS

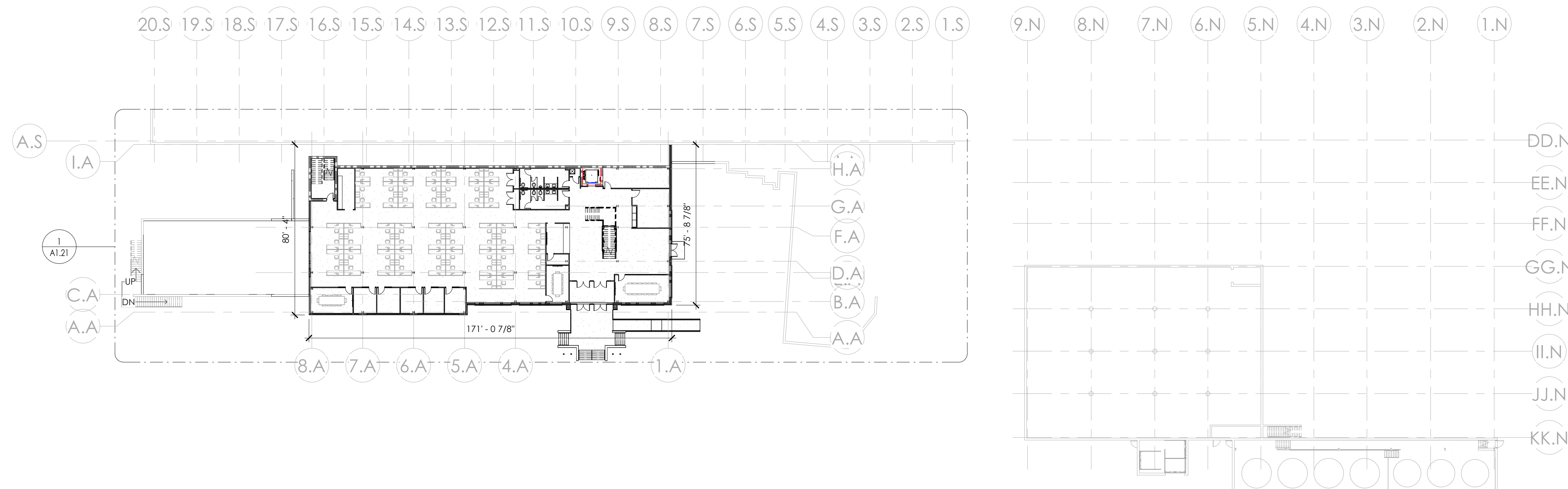
6/29/22	FIRE PUMP PERMIT SET
7/5/22	CITY PRELIM REVIEW
8/3/22	CITY FINAL REVIEW
9/13/22	CITY FINAL REVIEW

PROJECT NUMBER	8210068
PROJECT ISSUED	1/3/2022
DRAWN BY	BDC
CHECKED BY	KAK
SCALE	1/16" = 1'-0"

NOT FOR CONSTRUCTION



② OVERALL SECOND FLOOR PLAN
1/32" = 1'-0"



① OVERALL FIRST FLOOR PLAN
1/32" = 1'-0"

DRAWINGS AND SPECIFICATIONS AS INSTRUMENTS OF SERVICE ARE THE PROPERTY OF VJS CONSTRUCTION SERVICES. THE ARCHITECT/ENGINEER ASSUMES NO RESPONSIBILITY OR LIABILITY FOR THE USE OF THESE PLANS FOR ANY PROJECT OTHER THAN SPECIFICALLY AUTHORIZED BY THE LANDSCAPED AND SEALED FOR EACH SPECIFIC LOCATION IN THE STATE, PROVINCE, OR TERRITORY SHOWN ON THE SEAL.

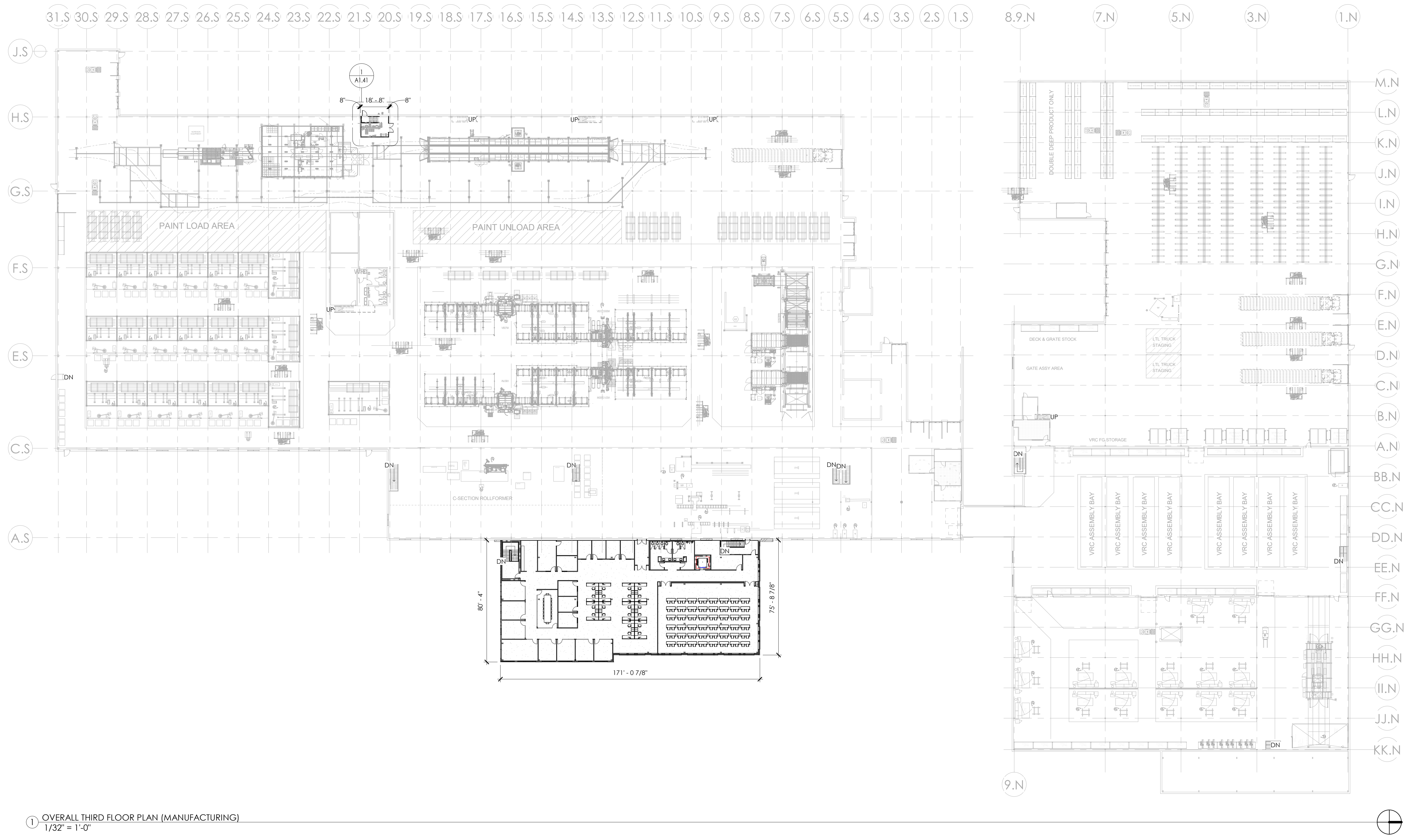
ISSUANCE & REVISIONS

DATE	DESCRIPTION
4/29/22	FIRE PUMP PERMIT SET
7/5/22	CITY PRELIM REVIEW
8/3/22	CITY FINAL REVIEW
9/13/22	CITY FINAL REVIEW

PROJECT NUMBER	8210068
PROJECT ISSUED	1/3/2022
DRAWN BY	BDC
CHECKED BY	KAK
SCALE	As indicated

OVERALL FIRST & SECOND FLOOR PLANS

NOT FOR CONSTRUCTION



1 OVERALL THIRD FLOOR PLAN (MANUFACTURING)
1/32" = 1'-0"

KEY PLAN (A1.02)
1" = 200'-0"

NOT FOR CONSTRUCTION

ISSUANCE & REVISIONS	
4/29/22	FIRE PUMP PERMIT SET
7/5/22	CITY PRELIM REVIEW
8/3/22	CITY FINAL REVIEW
9/13/22	CITY FINAL REVIEW

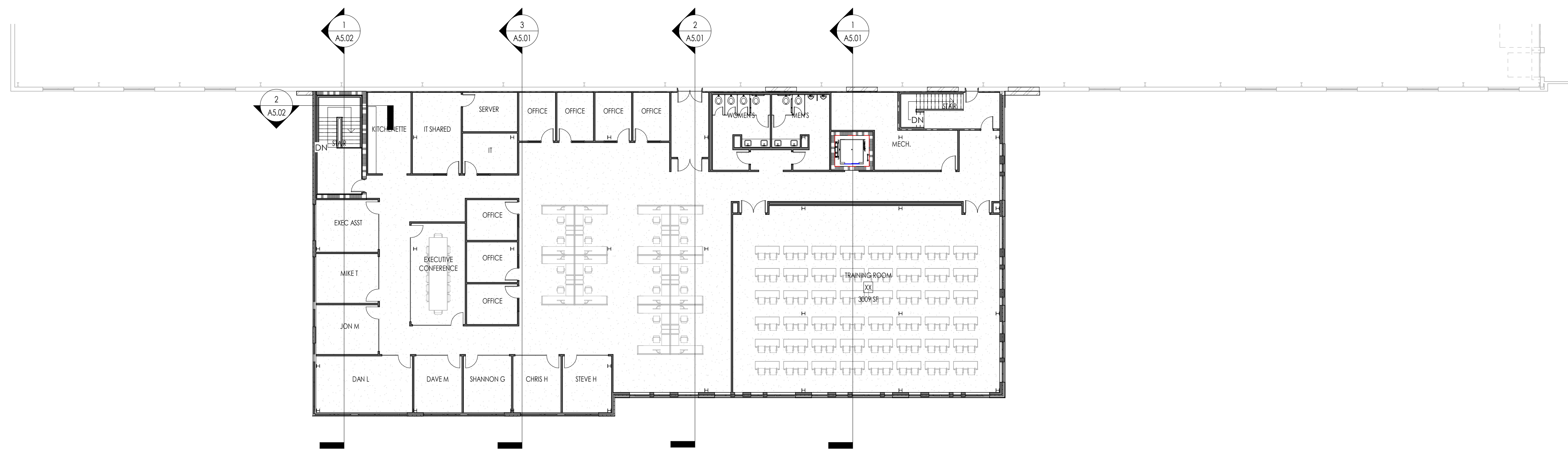
PROJECT NUMBER	8210068
PROJECT ISSUED	1/3/2022
DRAWN BY	BDC
CHECKED BY	KAK
SCALE	As indicated

OVERALL THIRD FLOOR PLAN

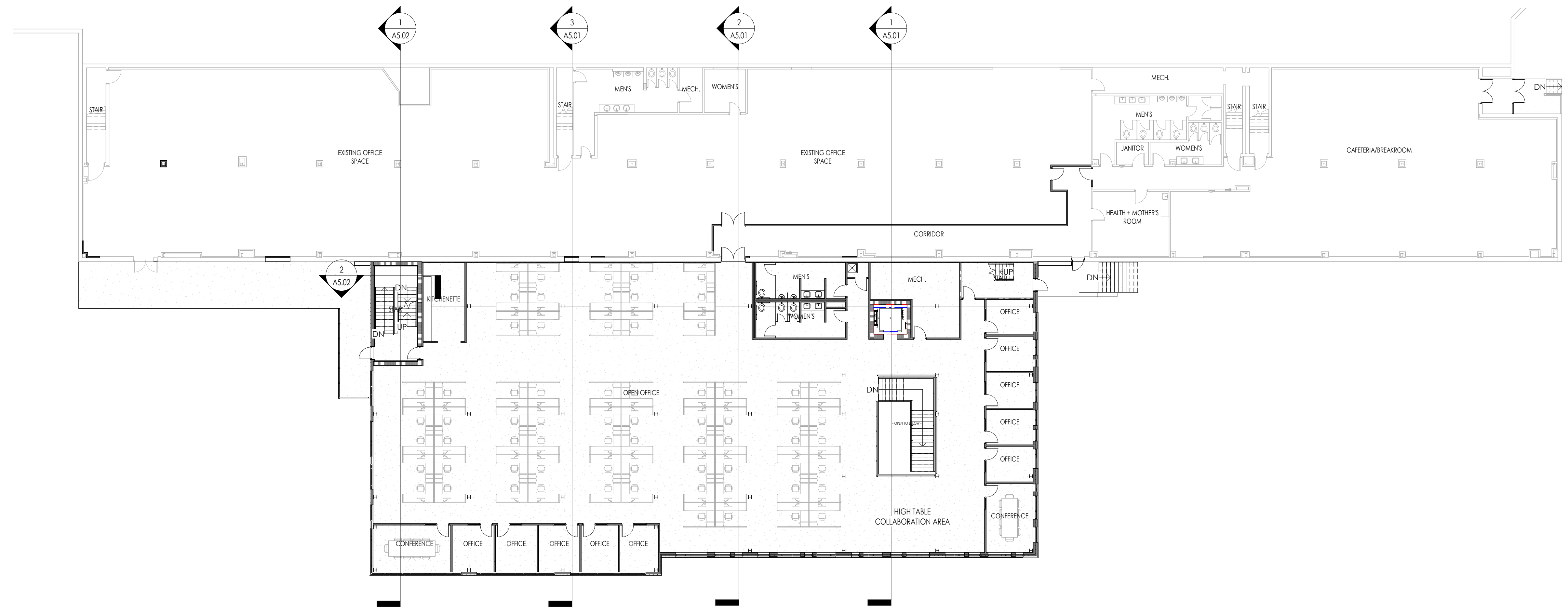
A1.02

WILDECK INC.
OFFICE ADDITION
1900 E NORTH ST
WAUKESHA, WI 53188

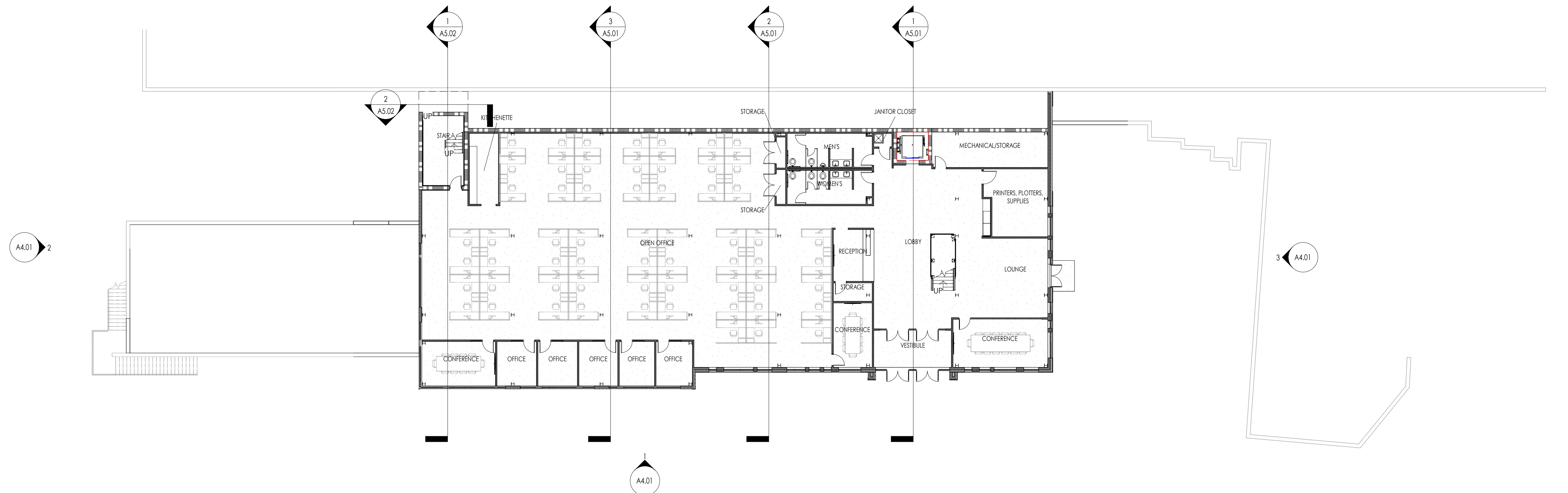




③ THIRD FLOOR OFFICE FLOOR PLAN
1/16" = 1'-0"



② SECOND FLOOR OFFICE FLOOR PLAN
1/16" = 1'-0"



① FIRST FLOOR OFFICE FLOOR PLAN
1/16" = 1'-0"

9/12/2022 5:11:00 PM

DRAWINGS AND SPECIFICATIONS AS INSTRUMENTS OF SERVICE ARE THE PROPERTY OF VJS CONSTRUCTION SERVICES. THE ARCHITECT/ENGINEER ASSUMES NO RESPONSIBILITY OR LIABILITY FOR THE USE OF THESE PLANS FOR ANY PROJECT OTHER THAN SPECIFICALLY AUTHORIZED BY THE ASS. SIGNED AND SEALED FOR EACH SPECIFIC LOCATION BY THE SEAL, PRINTED NAME, OR TERRITORY SHOWN ON THE SEAL.

ISSUANCE & REVISIONS

4/29/22	FIRE PUMP PERMIT SET
7/5/22	CITY PRELIM REVIEW
8/3/22	CITY FINAL REVIEW
9/13/22	CITY FINAL REVIEW

PROJECT NUMBER	8210068
PROJECT ISSUED	1/3/2022
DRAWN BY	BDC
CHECKED BY	KAK
SCALE	1/16" = 1'-0"

OVERALL OFFICE ADDITION PLANS

NOT FOR CONSTRUCTION



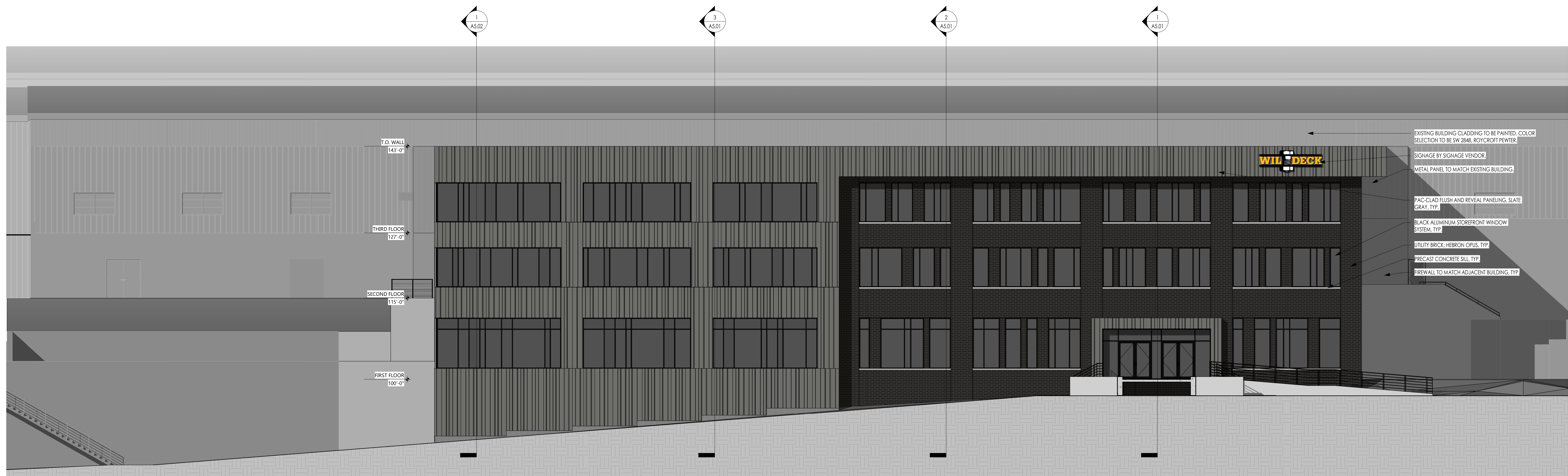
③ ADDITION NORTH ELEVATION
1/8" = 1'-0"

- SIGNAGE BY SIGNAGE VENDOR.
- PAC-CLAD FLUSH AND REVEAL PANELING, SLATE GRAY, TYP.
- BLACK ALUMINUM STOREFRONT WINDOW SYSTEM, TYP.
- UTILITY BRICK: HEBRON OPUS, TYP.
- PRECAST CONCRETE SILL, TYP.
- HORIZONTAL METAL SIDING, WILDECK YELLOW, TYP.



② ADDITION SOUTH ELEVATION
1/8" = 1'-0"

- PAC-CLAD FLUSH AND REVEAL PANELING, SLATE GRAY, TYP.
- BLACK ALUMINUM STOREFRONT WINDOW SYSTEM, TYP.



① ADDITION EAST ELEVATION
1/8" = 1'-0"

- EXISTING BUILDING CLADDING TO BE PAINTED. COLOR SELECTION TO BE SW 2848, ROY-CROFT PEWTER.
- SIGNAGE BY SIGNAGE VENDOR.
- METAL PANEL TO MATCH EXISTING BUILDING.
- PAC-CLAD FLUSH AND REVEAL PANELING, SLATE GRAY, TYP.
- BLACK ALUMINUM STOREFRONT WINDOW SYSTEM, TYP.
- UTILITY BRICK: HEBRON OPUS, TYP.
- PRECAST CONCRETE SILL, TYP.
- FIREWALL TO MATCH ADJACENT BUILDING, TYP.

DRAWINGS AND SPECIFICATIONS AS INSTRUMENTS OF SERVICE ARE THE PROPERTY OF VJS CONSTRUCTION SERVICES. THE ARCHITECT/ENGINEER ASSUMES NO RESPONSIBILITY OR LIABILITY FOR THE USE OF THESE PLANS FOR ANY PROJECTS OTHER THAN SPECIFICALLY AUTHORIZED BY THEM AND SIGNED AND SEALED FOR SUCH SPECIFIC LOCATION IN THE STATE, PROVINCE, OR TERRITORY SHOWN ON THE SEAL.

ISSUANCE & REVISIONS

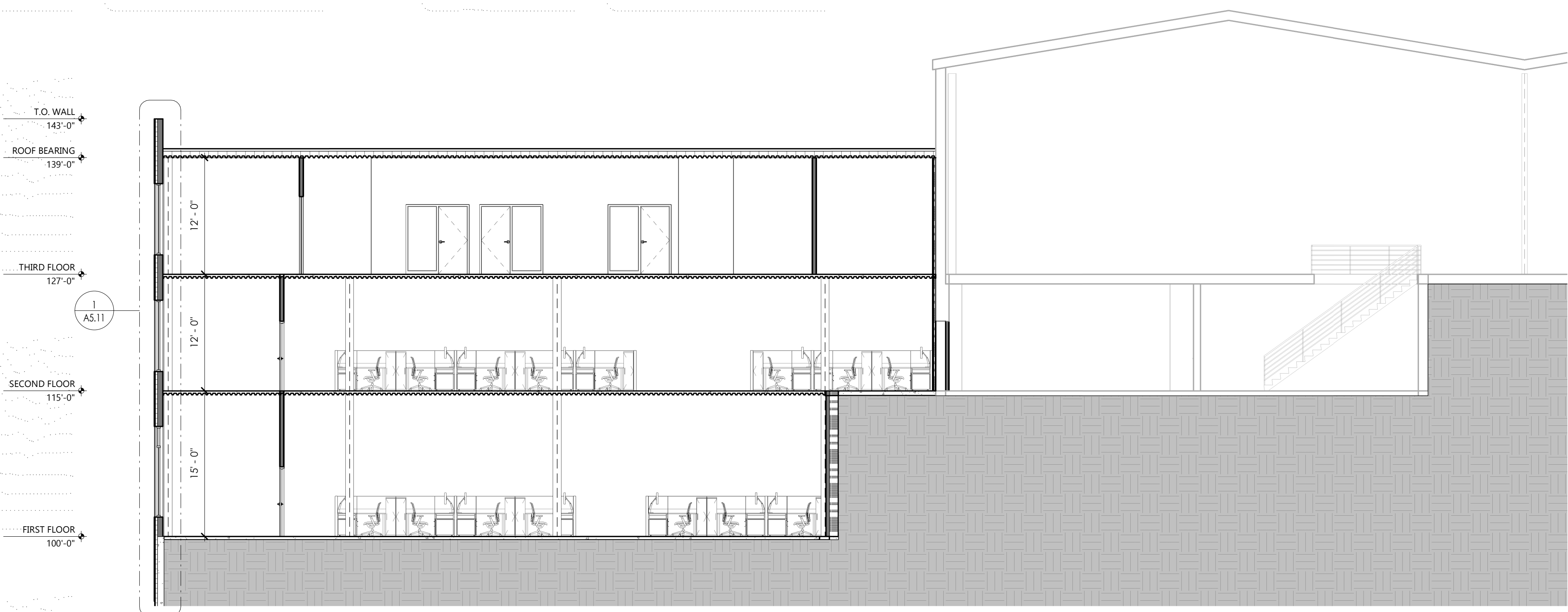
DATE	DESCRIPTION
4/29/22	FIRE PUMP PERMIT SET
7/5/22	CITY PRELIM REVIEW
8/3/22	CITY FINAL REVIEW
9/13/22	CITY FINAL REVIEW

PROJECT NUMBER	8210068
PROJECT ISSUED	1/3/2022
DRAWN BY	BDC
CHECKED BY	KAK
SCALE	1/8" = 1'-0"

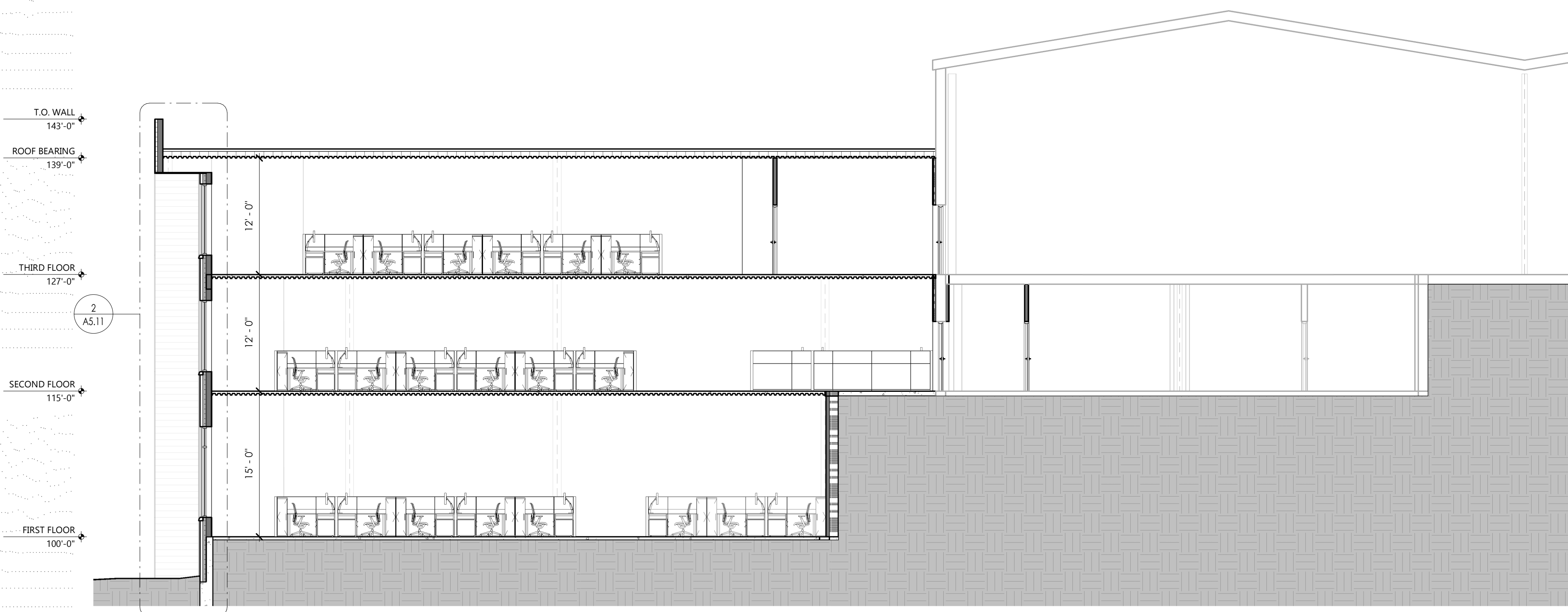
EXTERIOR ELEVATIONS

A4.01

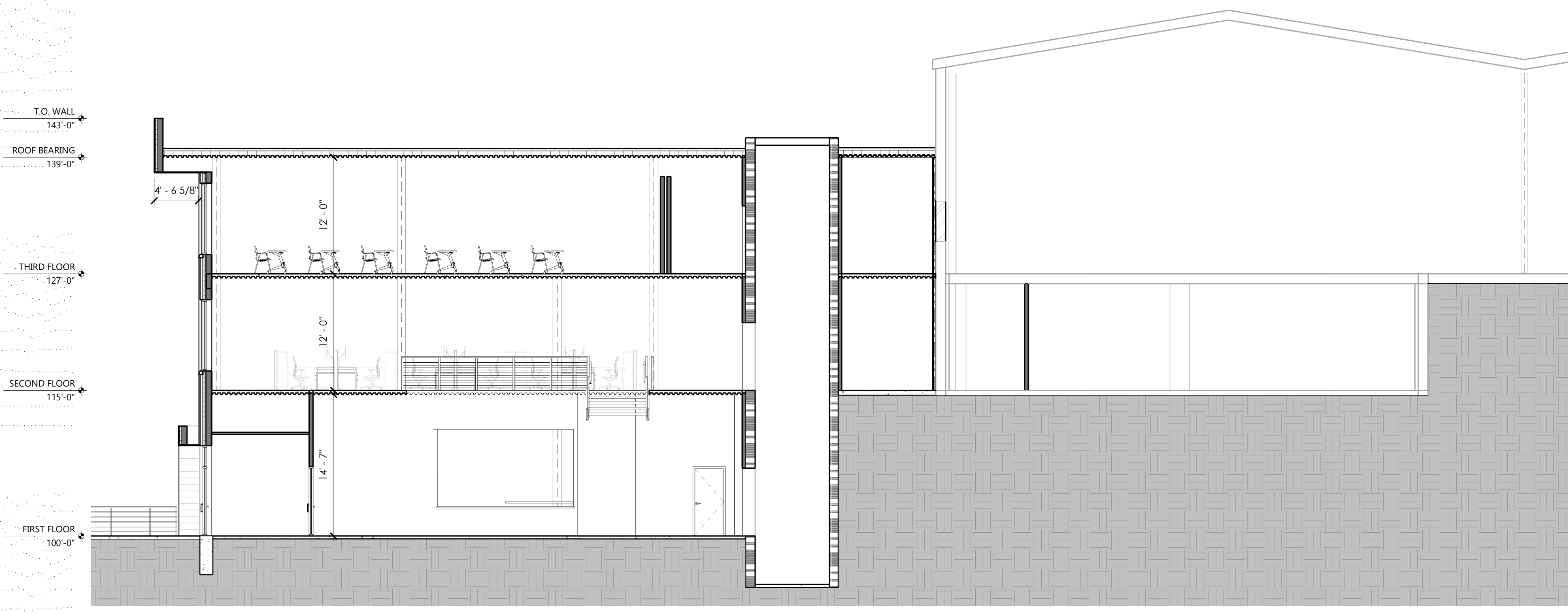
NOT FOR CONSTRUCTION



③ BUILDING SECTION 03
1/8" = 1'-0"



② BUILDING SECTION 02
1/8" = 1'-0"



① BUILDING SECTION 01
1/8" = 1'-0"

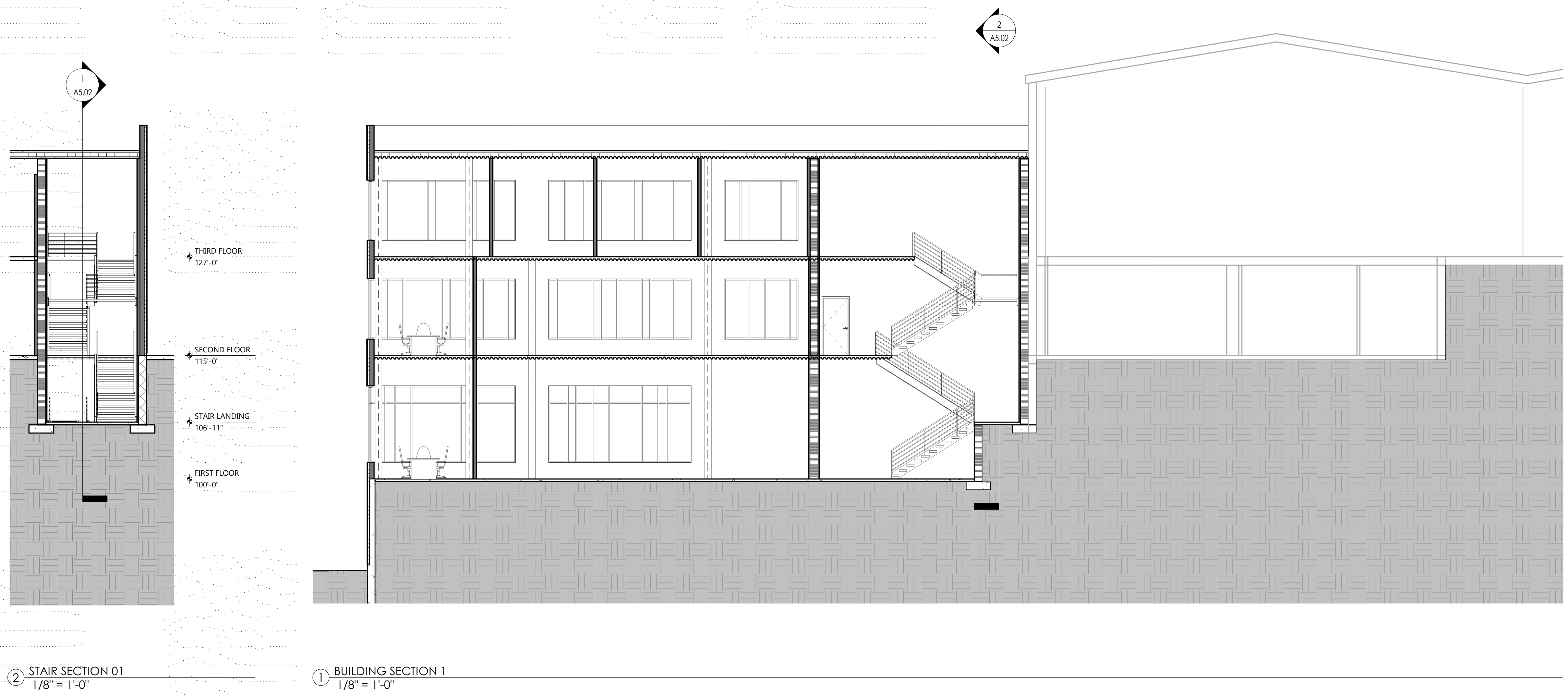
DRAWINGS AND SPECIFICATIONS AS INSTRUMENTS OF SERVICE ARE THE PROPERTY OF VJS CONSTRUCTION SERVICES. THE ARCHITECT/ENGINEER ASSUMES NO RESPONSIBILITY OR LIABILITY FOR THE USE OF THESE PLANS FOR ANY PROJECTS OTHER THAN SPECIFICALLY AUTHORIZED BY THE LAND-SCAPED AND SEALED FOR SUCH SPECIFIC LOCATION IN THE STATE, PROVINCE, OR TERRITORY SHOWN ON THE SEAL.

ISSUANCE & REVISIONS

DATE	REVISION
4/29/22	FIRE PUMP PERMIT SET
7/5/22	CITY PRELIM REVIEW
8/3/22	CITY FINAL REVIEW
9/13/22	CITY FINAL REVIEW

PROJECT NUMBER	8210068
PROJECT ISSUED	1/3/2022
DRAWN BY	BDC
CHECKED BY	KAK
SCALE	1/8" = 1'-0"

NOT FOR CONSTRUCTION



2 STAIR SECTION 01
1/8" = 1'-0"

1 BUILDING SECTION 1
1/8" = 1'-0"

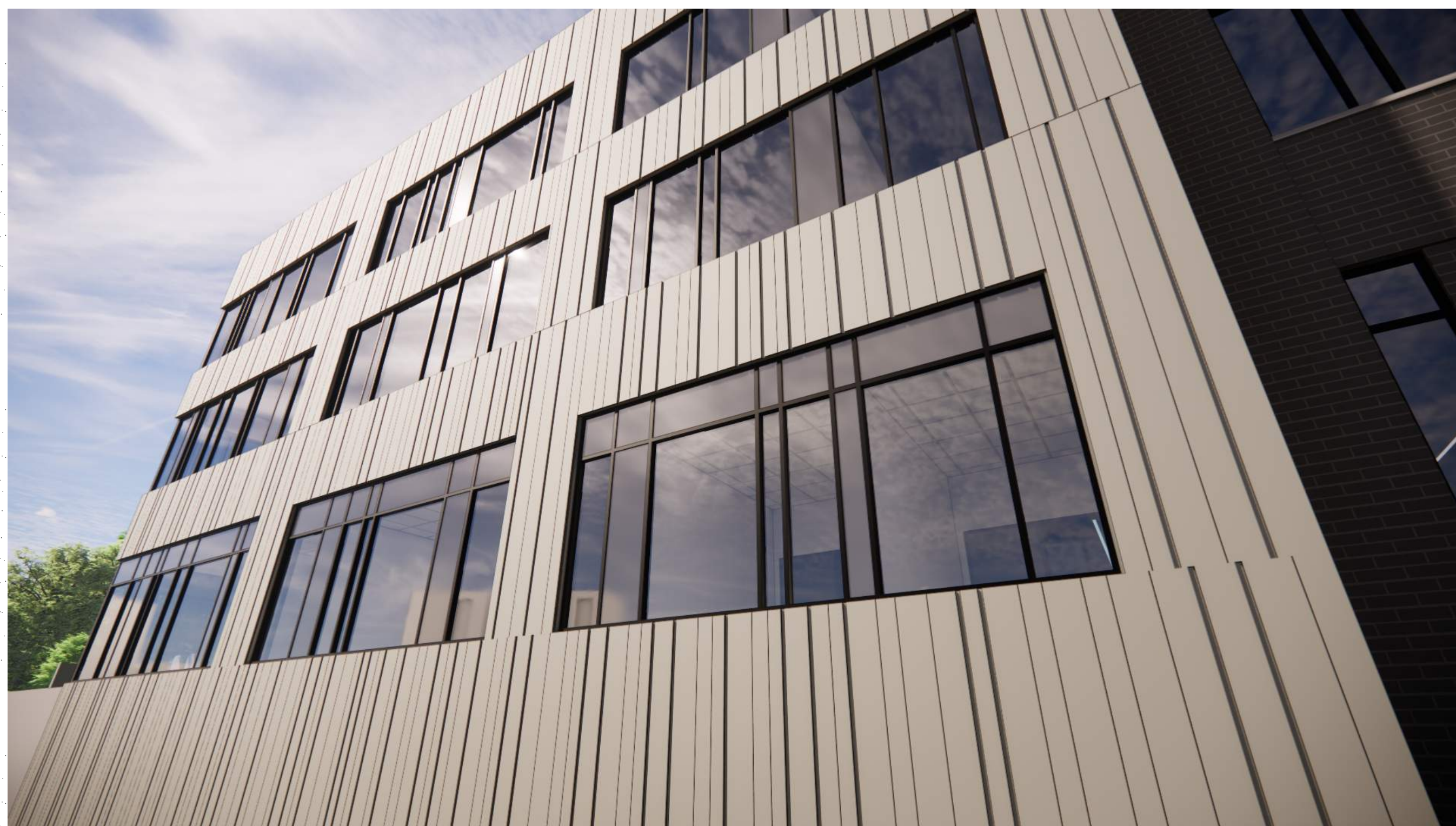
DRAWINGS AND SPECIFICATIONS AS INSTRUMENTS OF SERVICE ARE THE PROPERTY OF VJS CONSTRUCTION SERVICES. THE ARCHITECT/ENGINEER ASSUMES NO RESPONSIBILITY OR LIABILITY FOR THE USE OF THESE PLANS FOR ANY PROJECTS OTHER THAN SPECIFICALLY AUTHORIZED BY THE ASS. SIGNED AND SEALED FOR SUCH SPECIFIC LOCATION IN THE STATE, PROVINCE, OR TERRITORY SHOWN ON THE SEAL.

ISSUANCE & REVISIONS

DATE	DESCRIPTION
4/29/22	FIRE PUMP PERMIT SET
7/5/22	CITY PRELIM REVIEW
8/3/22	CITY FINAL REVIEW
9/13/22	CITY FINAL REVIEW

PROJECT NUMBER 8210068
PROJECT ISSUED 1/3/2022
DRAWN BY BDC
CHECKED BY KAK
SCALE 1/8" = 1'-0"

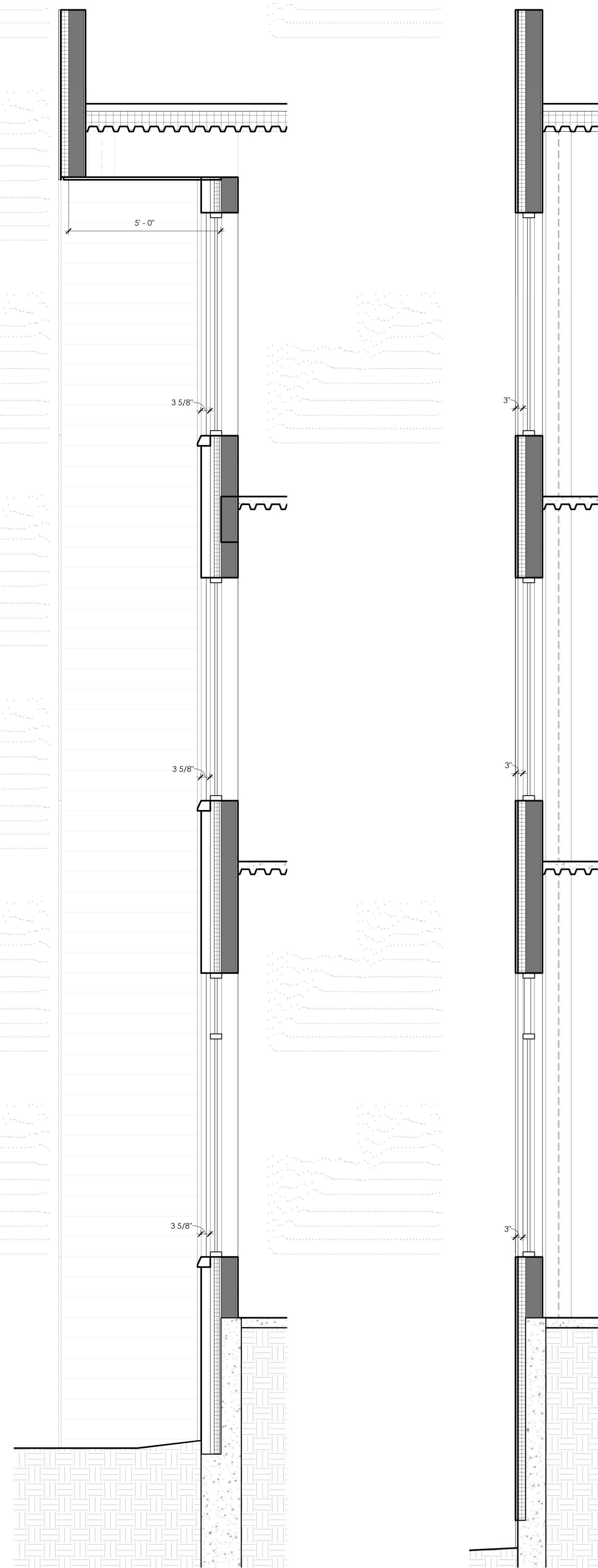
NOT FOR CONSTRUCTION



④ METAL PANEL REVEAL PERSPECTIVE
12" = 1'-0"



③ BRICK WINDOW REVEAL PERSPECTIVE
12" = 1'-0"



② ENLARGED WALL SECTION 02
1/2" = 1'-0"

① ENLARGED WALL SECTION 01
1/2" = 1'-0"

DRAWINGS AND SPECIFICATIONS AS INSTRUMENTS OF SERVICE ARE THE PROPERTY OF VJS CONSTRUCTION SERVICES. THE ARCHITECT/ENGINEER ASSUMES NO RESPONSIBILITY OR LIABILITY FOR THE USE OF THESE PLANS FOR ANY PROJECTS OTHER THAN SPECIFICALLY AUTHORIZED BY THE A/E/C. THESE PLANS ARE TO BE KEPT SECURED AND SEALED FOR A/E/C'S SPECIFIC LOCATION IN THE A/E/C'S OFFICE OR TERRITORY SHOWN ON THE SEAL.

ISSUANCE & REVISIONS

DATE	DESCRIPTION
4/29/22	FIRE PUMP PERMIT SET
7/5/22	CITY PRELIM REVIEW
8/3/22	CITY FINAL REVIEW
9/13/22	CITY FINAL REVIEW

PROJECT NUMBER: 8210068
PROJECT ISSUED: 1/3/2022
DRAWN BY: BDG
CHECKED BY: KAK
SCALE: As indicated.

NOT FOR CONSTRUCTION



③ EXTERIOR RENDERING - SOUTH
12" = 1'-0"



② EXTERIOR RENDERING - NORTH
12" = 1'-0"



① EXTERIOR PERSPECTIVE - REVISED
12" = 1'-0"

DRAWINGS AND SPECIFICATIONS AS INSTRUMENTS OF SERVICE ARE THE PROPERTY OF VJS CONSTRUCTION SERVICES. THE ARCHITECT/ENGINEER ASSUMES NO RESPONSIBILITY OR LIABILITY FOR THE USE OF THESE PLANS FOR ANY PROJECTS OTHER THAN SPECIFICALLY AUTHORIZED BY THE ARCHITECT/ENGINEER. THESE PLANS ARE TO BE USED ONLY FOR THE PROJECT AND LOCATION SPECIFIC TO THE SITE, PROJECT, OR TERRITORY SHOWN ON THE SEAL.

ISSUANCE & REVISIONS

6/29/22	FIRE PUMP PERMIT SET
7/5/22	CITY PRELIM REVIEW
8/3/22	CITY FINAL REVIEW
9/13/22	CITY FINAL REVIEW

PROJECT NUMBER	8210068
PROJECT ISSUED	1/3/2022
DRAWN BY	BDC
CHECKED BY	KAK
SCALE	12" = 1'-0"



② SOUTHBOUND PERSPECTIVE - REVISED
12" = 1'-0"



① NORTHBOUND PERSPECTIVE - REVISED
12" = 1'-0"

9/12/2022 5:11:36 PM

DRAWINGS AND SPECIFICATIONS AS INSTRUMENTS OF SERVICE ARE THE PROPERTY OF VJS CONSTRUCTION SERVICES. THE ARCHITECT/ENGINEER ASSUMES NO RESPONSIBILITY OR LIABILITY FOR THE USE OF THESE PLANS FOR ANY PROJECTS OTHER THAN SPECIFICALLY AUTHORIZED BY THE ASSOCIATED AND SEALED FOR SUCH SPECIFIC LOCATIONS IN THE STATE, PROVINCE, OR TERRITORY SHOWN ON THE SEAL.

ISSUANCE & REVISIONS

6/29/22	FIRE PUMP PERMIT SET
7/5/22	CITY PRELIM REVIEW
8/3/22	CITY FINAL REVIEW
9/13/22	CITY FINAL REVIEW

PROJECT NUMBER	8210068
PROJECT ISSUED	1/3/2022
DRAWN BY	BDC
CHECKED BY	KAK
SCALE	12" = 1'-0"

NOT FOR CONSTRUCTION