

CONSTRUCTION NOTES

1. ALL DIMENSIONS TO CURBS AND CURB/GUTTER ARE TO THE FACE OF CURB UNLESS OTHERWISE NOTED.
2. INSTALL NEW CONCRETE WALKWAYS USING THE FOLLOWING GUIDELINES:
 - A. MAXIMUM SPACING OF CONTROL JOINTS IN WALKS TO BE EIGHT FEET, BUT GENERALLY MATCH THE WALK WIDTH.
 - B. MAXIMUM SPACING OF CONTROL JOINTS IN CONCRETE TRAFFIC SLABS TO BE 12'.
 - C. MAXIMUM SPACING OF 1/2" EXPANSION JOINTS TO BE 40 FEET.
 - D. BUSH LOGS, SIGN CORNERS, HORIZONTAL PANEL DEFS, BUILDING CORNERS, ETC. AND USE EQUAL PANEL SIZES.
3. SEED AND MULCH ALL AREAS DISTURBED BY CONSTRUCTION THAT ARE NOT DESIGNATED WITH ANOTHER SURFACING TYPE.
4. SIGNS INSTALLED WITH POSTS PER DETAIL C900

GENERAL NOTES

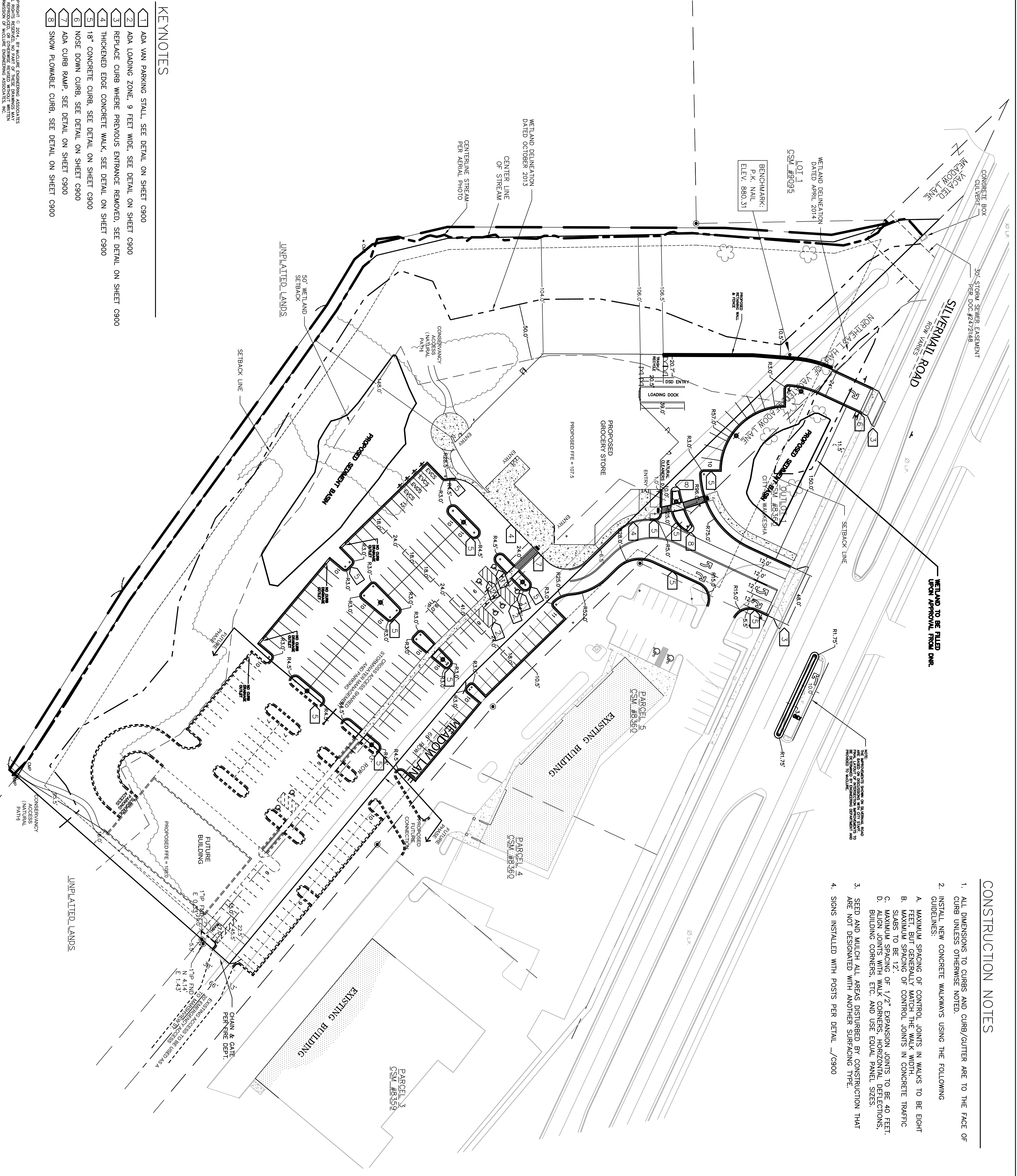
1. THIS PROJECT SHALL BE CONSTRUCTED IN ACCORDANCE WITH THE FOLLOWING:
 - A. "STANDARD SPECIFICATIONS FOR SEWER AND WATER IN WISCONSIN", CURRENT EDITION, WITH AMEND.
 - B. THE CITY OF WAUKESHA MUNICIPAL CODE, CURRENT EDITION.
 - C. ALL WORK TO BE COMPLETED IN COMPLIANCE WITH ALL APPLICABLE STATE AND LOCAL CODES AND ORDINANCES.
2. ALL MATERIALS SHALL BE APPROVED BY THE CITY OF WAUKESHA PUBLIC WORKS DIRECTOR OR ENGINEER PRIOR TO INSTALLATION.
3. VERIFY THE EXACT LOCATION OF ALL UTILITIES PRIOR TO CONSTRUCTION (CALL DIGGERS HOTLINE AT 800-242-8511).
4. NOTIFY THE CITY OF WAUKESHA 48 HOURS IN ADVANCE OF BEGINNING CONSTRUCTION.
5. NOTIFY McClure ENGINEERING 48 HOURS IN ADVANCE OF BEGINNING CONSTRUCTION.
6. ALL ITEMS SHALL INCLUDE ALL THE NECESSARY MATERIALS AND LABOR TO CONSTRUCT THE FACILITIES IN ACCORDANCE WITH THE DESIGN DRAWINGS.
7. EXISTING UTILITY INFORMATION IS SHOWN FROM SURVEY WORK, FIELD OBSERVATIONS, AVAILABLE PUBLIC RECORDS, AND AS-BUILT DRAWINGS. EXACT LOCATIONS AND ELEVATIONS OF UTILITIES SHALL BE DETERMINED PRIOR TO INSTALLING NEW WORK.
8. PROPERTY CORNERS SHALL BE CAREFULLY PROTECTED UNTIL THEY HAVE BEEN REFERENCED BY A PROFESSIONAL LAND SURVEYOR. PROPERTY MONUMENTS DISTURBED BY THE CONTRACTOR'S OPERATIONS SHALL BE REPLACED AT THE CONTRACTOR'S EXPENSE.
9. ALL PROPOSED GRADES SHOWN ARE FINISHED GRADES UNLESS OTHERWISE NOTED.
10. VERIFY ALL GRADES, MAKE SURE ALL AREAS DRAIN PROPERLY PRIOR TO CONSTRUCTION.
11. PROTECT INLETS AND ADJACENT PROPERTIES WITH SILT FENCING OR APPROVED EROSION CONTROL METHODS UNTIL CONSTRUCTION IS COMPLETED. PLACE SILT FENCING AT DOWN-SLOPE SIDE OF GRADING LIMITS.
12. SIGN CONSTRUCTION AND PAVEMENT MARKINGS SHALL CONFORM TO THE REQUIREMENTS OF "THE MANUAL ON UNIFORM TRAFFIC CONTROL DEVICES", CURRENT EDITION.
13. SOME FIELD ADJUSTMENTS MAY BE NECESSARY AT POINTS WHERE PROPOSED PAVEMENT AND SIDEWALKS MEET EXISTING PAVEMENT AND SIDEWALKS. REVIEW ANY REQUIRED CHANGES WITH THE ENGINEER PRIOR TO CONSTRUCTION OF WORK.
14. SURVEY INFORMATION FOR THE SITE WAS PROVIDED BY OTHERS.

LEGEND

W	EXISTING WATERMAIN
—	EXISTING SANITARY SEWER
—	EXISTING STORM SEWER
C	EXISTING GAS MAIN
E	EXISTING ELECTRIC LINE
T	EXISTING TELEPHONE LINE
—	EXISTING CABLE LINE
□	EXISTING TRANSFORMER
∅ UP	EXISTING POWER POLE
⊙	EXISTING MANHOLE (SANITARY/STORM)
⊙	EXISTING FIRE HYDRANT ASSEMBLY
—	EXISTING WATER VALVE
—	EXISTING CONTOUR LINE
—	EXISTING CURB AND GUTTER
—	PROPOSED CURB AND GUTTER
—	ACCESSIBLE PARKING STALL SYMBOL
⊙	PROPOSED LIGHT POLE

KEYNOTES

- 1 ADA VAN PARKING STALL, SEE DETAIL ON SHEET C900
- 2 ADA LOADING ZONE, 9 FEET WIDE, SEE DETAIL ON SHEET C900
- 3 REPLACE CURB WHERE PREVIOUS ENTRANCE REMOVED, SEE DETAIL ON SHEET C900
- 4 THICKENED EDGE CONCRETE WALK, SEE DETAIL ON SHEET C900
- 5 18" CONCRETE CURB, SEE DETAIL ON SHEET C900
- 6 NOSE DOWN CURB, SEE DETAIL ON SHEET C900
- 7 ADA CURB RAMP, SEE DETAIL ON SHEET C900
- 8 SNOW FLOWABLE CURB, SEE DETAIL ON SHEET C900



DESIGNED BY: KCH
 DRAWN BY: JBB
 CHECKED BY: KCH
 DATE: MAY 28, 2014

<p>REVISIONS</p> <table border="1" style="width: 100%; border-collapse: collapse;"> <thead> <tr> <th style="width: 5%;">NO.</th> <th style="width: 75%;">ITEM</th> <th style="width: 20%;">DATE</th> </tr> </thead> <tbody> <tr> <td> </td> <td> </td> <td> </td> </tr> </tbody> </table>	NO.	ITEM	DATE				<p>PLOTTING SCALE: 1" = 40'</p> <p>DESIGNED BY: KCH</p> <p>DRAWN BY: JBB</p> <p>CHECKED BY: KCH</p> <p>DATE: MAY 28, 2014</p>	<p>McClure Engineering Associates, Inc.</p> <p>5417 North 118th Court (414) 616-4880</p> <p>Milwaukee, Wisconsin 53225 FAX (414) 616-4885</p>	<p>OVERALL SITE PLAN GOOD HARVEST MARKET II, LLC</p> <p>1850 MEADOW LANE 262-544-9380 WAUKESHA, WI.</p> <p>FILE NAME: W:\USERS\jbb\g\goodharvest\13025 EB.dwg JOB NUMBER: 08-15-13-025</p>
NO.	ITEM	DATE							

