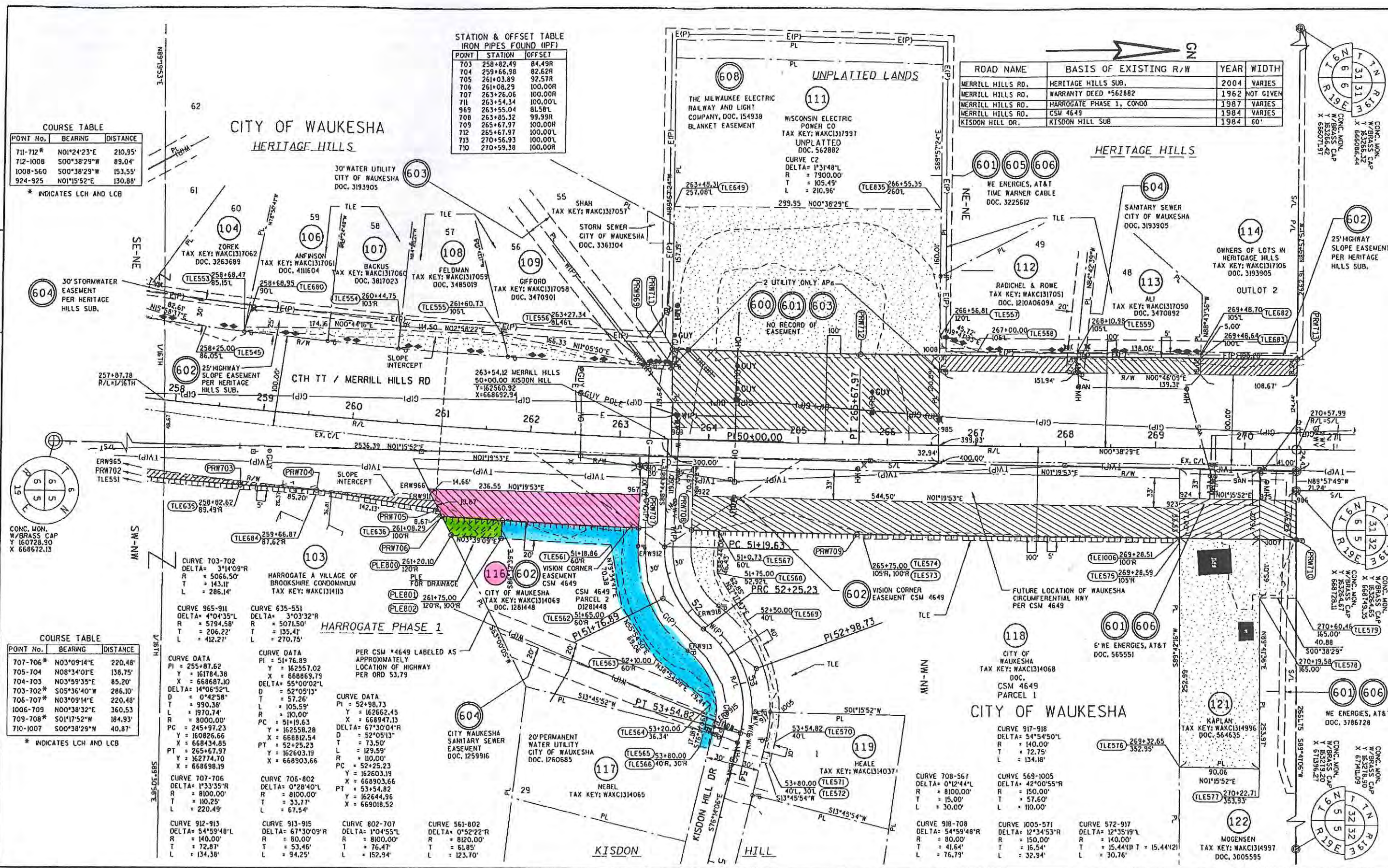


POINT No.	BEARING	DISTANCE
711-712*	N01°24'23"E	210.95'
712-1008	S00°38'29"W	89.04'
1008-560	S00°38'29"W	153.55'
924-925	N01°15'52"E	130.88'

* INDICATES LCH AND LCB

POINT	STATION	OFFSET
703	258+82.49	84.49R
704	259+66.38	82.62R
705	261+03.89	92.57R
706	261+08.29	100.00R
707	263+26.06	100.00R
711	263+54.34	100.00L
969	263+55.04	81.58L
708	263+85.32	99.99R
709	265+67.97	100.00R
712	265+67.97	100.00L
713	270+56.93	100.00L
710	270+59.38	100.00R

ROAD NAME	BASIS OF EXISTING R/W	YEAR	WIDTH
MERRILL HILLS RD.	HERITAGE HILLS SUB.	2004	VARIES
MERRILL HILLS RD.	WARRANTY DEED *562882	1962	NOT GIVEN
MERRILL HILLS RD.	HARRGATE PHASE 1, CONDO	1987	VARIES
MERRILL HILLS RD.	CSM 4649	1984	VARIES
KISDON HILL DR.	KISDON HILL SUB	1984	60'



POINT No.	BEARING	DISTANCE
707-706*	N03°09'14"E	220.48'
705-704	N08°34'01"E	138.75'
704-703	N03°59'35"E	85.20'
703-702*	S05°36'40"W	286.10'
702-707*	N03°09'14"E	220.48'
1006-709	N00°38'32"E	360.53'
709-708*	S01°17'52"W	184.93'
710-1007	S00°38'29"W	40.87'

* INDICATES LCH AND LCB

CURVE DATA	CURVE DATA	PER CSM *4649 LABELED AS APPROXIMATELY LOCATION OF HIGHWAY PER ORD 53.79
PI = 255+87.62 Y = 161784.38 X = 668867.10 DELTA = 14°06'52"L D = 0°42'58" T = 990.38' L = 1970.74' R = 8000.00' PC = 245+97.23 Y = 160826.66 X = 668434.85 PT = 255+67.97 Y = 162774.70 X = 668998.19	PI = 51+76.89 Y = 162557.02 X = 668869.79 DELTA = 55°00'02"L D = 52°05'13" T = 57.26' L = 105.59' R = 110.00' PC = 51+19.63 Y = 162558.28 X = 668812.54 PT = 52+25.23 Y = 162603.19 X = 668903.66	PI = 52+98.73 Y = 162662.45 X = 668947.13 DELTA = 67°50'04"R D = 52°05'13" T = 73.59' L = 129.59' R = 110.00' PC = 52+25.23 Y = 162603.19 X = 668903.66 PT = 53+54.82 Y = 162644.96 X = 669018.52
PI = 162603.19 Y = 162603.19 X = 668903.66 DELTA = 0°28'40"L R = 8100.00' T = 33.77' L = 220.49'	PI = 51+76.89 Y = 162557.02 X = 668869.79 DELTA = 55°00'02"L D = 52°05'13" T = 57.26' L = 105.59' R = 110.00' PC = 51+19.63 Y = 162558.28 X = 668812.54 PT = 52+25.23 Y = 162603.19 X = 668903.66	PI = 52+98.73 Y = 162662.45 X = 668947.13 DELTA = 67°50'04"R D = 52°05'13" T = 73.59' L = 129.59' R = 110.00' PC = 52+25.23 Y = 162603.19 X = 668903.66 PT = 53+54.82 Y = 162644.96 X = 669018.52
PI = 162603.19 Y = 162603.19 X = 668903.66 DELTA = 0°28'40"L R = 8100.00' T = 33.77' L = 220.49'	PI = 51+76.89 Y = 162557.02 X = 668869.79 DELTA = 55°00'02"L D = 52°05'13" T = 57.26' L = 105.59' R = 110.00' PC = 51+19.63 Y = 162558.28 X = 668812.54 PT = 52+25.23 Y = 162603.19 X = 668903.66	PI = 52+98.73 Y = 162662.45 X = 668947.13 DELTA = 67°50'04"R D = 52°05'13" T = 73.59' L = 129.59' R = 110.00' PC = 52+25.23 Y = 162603.19 X = 668903.66 PT = 53+54.82 Y = 162644.96 X = 669018.52
PI = 162603.19 Y = 162603.19 X = 668903.66 DELTA = 0°28'40"L R = 8100.00' T = 33.77' L = 220.49'	PI = 51+76.89 Y = 162557.02 X = 668869.79 DELTA = 55°00'02"L D = 52°05'13" T = 57.26' L = 105.59' R = 110.00' PC = 51+19.63 Y = 162558.28 X = 668812.54 PT = 52+25.23 Y = 162603.19 X = 668903.66	PI = 52+98.73 Y = 162662.45 X = 668947.13 DELTA = 67°50'04"R D = 52°05'13" T = 73.59' L = 129.59' R = 110.00' PC = 52+25.23 Y = 162603.19 X = 668903.66 PT = 53+54.82 Y = 162644.96 X = 669018.52

REVISION DATE: 08/01/2015	DATE: 08/03/2015	SCALE, FEET 0 50 100	HWY: CTH TT	STATE R/W PROJECT NUMBER 2788-00-22	PLAT SHEET 4.22
			COUNTY: WAUKESHA	CONSTRUCTION PROJECT NUMBER 2788-02-70	PS&E SHEET E