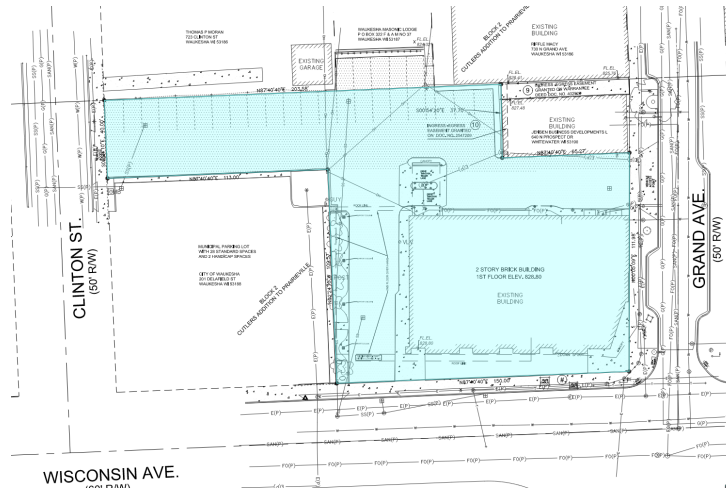


704 N Grand Ave Legal Description

THE SOUTH ONE HUNDRED TWELVE (112) FEET OF THE FOLLOWING DESCRIBED PARCELS OF LAND, TO-WIT: LOT EIGHT (8) AND A STRIP OF LAND OFF THE EAST SIDE OF LOT SEVEN (7), TWELVE (12) FEET WIDE AT THE SOUTH END, AND SIXTEEN (16) FEET WIDE AT THE NORTH END, IN BLOCK TWO (2) OF CUTLER'S ADDITION TO PRAIRIEVILLE, IN THE CITY OF WAUKESHA, WAUKESHA COUNTY, WISCONSIN, AND THE WEST 88 FEET OF LOT 7, BLOCK 2 IN CUTLER'S ADDITION TO PRAIRIEVILLE, IN THE CITY OF WAUKESHA, WAUKESHA COUNTY, WISCONSIN, ACCORDING TO THE RECORDED PLAT THEREOF, AND, THE NORTH 40 FEET OF LOT 6, BLOCK 2 OF CUTLER'S ADDITION TO PRAIRIEVILLE, IN THE CITY OF WAUKESHA, WAUKESHA COUNTY, WISCONSIN.



City Parking Lot Legal

Lot 6 of Block 2 of Cutler's Addition to Prairieville, in the City of Waukesha, in Waukesha County, except the north 40 feet.

