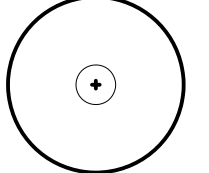
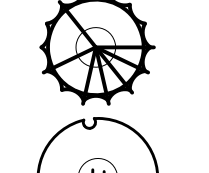
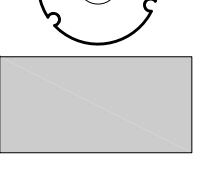






**PLANTING NOTES**

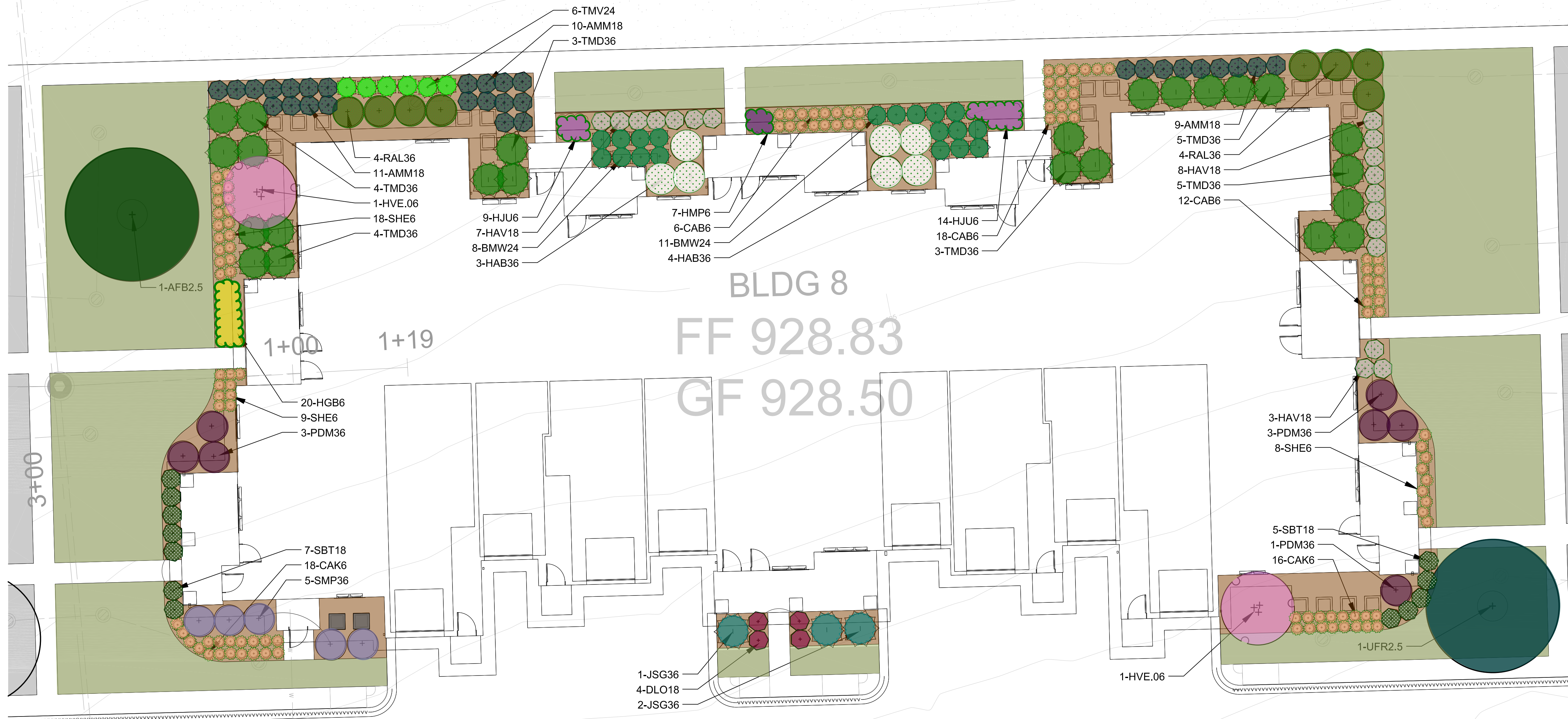
- Seed/Sod limit line is approximate. Seed/Sod to limits of grading and disturbance. Contractor responsible for restoration of any unauthorized disruption outside of designated construction area.
- Contractor responsible for erosion control in all seeded/sodded areas.
- Tree mulch rings in turf areas are 5 foot diameter, typical. Contractor shall provide a mulch ring around all existing trees within the limit of work. Remove all existing grass from area to be mulched and provide a typical v-trench edge.
- Bedlines are to be spade cut to a minimum depth of 3 inches unless otherwise shown on the plans. Curved bedlines are to be smooth and not segmented.
- Do not locate plants within 10' of utility structures, or within 5' horizontally of underground utility lines unless otherwise shown on the plans. Consult with Landscape Architect if these conditions exist.
- Plants and other materials are quantified and summarized for the convenience of the Owner and jurisdictional agencies only. Confirm and install sufficient quantities to complete the work as drawn and specified.
- Refer to specifications for additional conditions, standards and notes.

**PLANTING LEGEND**

-  Shade Tree (2 1/2" cal.), typical. See detail for installation.
-  Evergreen Tree (6' ht.), typical. See detail for installation.
-  Ornamental Tree (1 1/2" cal. or 6' ht.), typical. See detail for installation.
-  Turf Sod
-  Turf Seed
-  Understory Plantings - Shrubs (18" ht./spread) and Perennials (1 gal.), typical.
-  Wetland Plantings - Cattails (plugs)

**IRRIGATION NOTES**

- Irrigation system to be design build. Submit shop drawings for a complete and functional irrigation system. System to provide head to head spacing with 100% coverage of all turf areas within the Continental Properties development area.
- Locate all valves and quick couplers on the inside edge of all shrub beds where practical. Install valve boxes for both quick couplers and valves. Fill all Valve Boxes with pea gravel.
- Secure and pay for all permits, fees and inspections necessary for execution of this work.
- Obtain owner representative's approval of pipe trench and line layout prior to installation.
- All irrigation pipe shall be 1" min. diameter. All irrigation laterals to be class 160 PVC and all irrigation mainlines to be schedule 40 PVC.
- Irrigate lawn with 4" pop up spray heads and rotors, as applicable.
- Ensure that sprinkler heads do not spray walls, fences, sidewalks or streets.
- Coordinate with other trades.
- Provide sleeving as required.
- Provide Owner as-built drawings of installed system.



Plant material selections to be adjusted based on sun orientation

**Plant Material List**

Code	Botanical Name	Common Name	Size	Qty
<b>Shade Trees</b>				
AFB2.5	Acer x freemanii 'Autumn Blaze'	Autumn Blaze Freeman Maple	2 1/2" C	1
UFR2.5	Ulmus carpinifolia x parvifolia 'Frontier'	Frontier Elm	2 1/2" C	1
<b>Intermediate Trees</b>				
HVE.06	Hamamelis vernalis	Vernal Witchhazel	6' HT	2
<b>Deciduous Shrubs</b>				
AMM18	Aronia melanocarpa 'Morton'	Iroquois Beauty™ Black Chokeberry*	18" HT	30
DLO18	Diervilla lonicera	Dwarf Bush-honeysuckle	18" HT	4
HAB36	Hydrangea arborescens 'Abetwo'	Incrediball Smooth Hydrangea	36" HT	7
HAV18	Hydrangea arborescens 'NCHA5'	Invincibelle Wee White Smooth Hydrangea	18" HT	18
PDM36	Physocarpus opulifolius 'Donna May'	Little Devil Eastern Ninebark	36" HT	7
RAL36	Ribes alpinum	Alpine Currant	36" HT	8
SBT18	Spiraea betulifolia 'Tor'	Tor Birchleaf Spirea	18" HT	12
SMP36	Syringa meyeri 'Palbin'	Dwarf Meyer Lilac	36" HT	5
<b>Evergreen Shrubs</b>				
JSG36	Juniperus chinensis 'Sea Green'	Sea Green Chinese Juniper	36" HT	3
TMD36	Taxus x media 'Densiformis'	Dense Anglojap Yew	36" HT	24
TMV24	Taxus x media 'Everlow'	Everlow Anglojap Yew	24" HT	6
<b>Broadleaf Evergreens</b>				
BMW24	Buxus microphylla var. koreana 'Wintergreen'	Wintergreen Littleleaf Boxwood	24" HT	19
<b>Perennials</b>				
CAB6	Calamagrostis brachytricha	Korean Feather Reed Grass	1 GAL	46
CAK6	Calamagrostis x acutiflora 'Karl Foerster'	Karl Foerster Feather Reed Grass	1 GAL	34
HGB6	Hemerocallis 'Going Bananas'	Going Bananas Daylily	1 GAL	20
HMP6	Heuchera micrantha 'Palace Purple'	Small Flowered Coral Bells	1 GAL	7
HJU6	Hosta 'June'	June Hosta	1 GAL	23
SHE6	Sporobolus heterolepis	Prairie Dropseed	1 GAL	35

ISSUED  
JULY 7, 2022  
REVISIONS

No	Date	Issue

CHECKED BY: GBR  
DRAWN BY: NAA

SHEET TITLE

**Planting Plan Prototype**

SCALE IN FEET  
1" = 30'



NORTH SHEET NUMBER

**L1.6**