

SLIM12N

RAB



12, 18 and 26 Watt SLIM wall packs are ultra efficient and deliver impressive light distribution with a compact low-profile design that's super easy to install as a downlight or uplight.
Color: Bronze Weight: 4.2 lbs

Project: _____ Type: _____
Prepared By: _____ Date: _____

Driver Info		LED Info	
Type	Constant Current	Watts	12W
120V	0.12A	Color Temp	4000K (Neutral)
208V	0.08A	Color Accuracy	74 CRI
240V	0.07A	L70 Lifespan	100,000 Hours
277V	0.06A	Lumens	1,925
Input Watts	15.9W	Efficacy	121.1 lm/W

Technical Specifications

Compliance

UL Listed:
Suitable for wet locations. Suitable for mounting within 1.2m (4ft) of the ground.

ADA Compliant:

SLIM™ is ADA Compliant.

IESNA LM-79 & LM-80 Testing:

RAB LED luminaires and LED components have been tested by an independent laboratory in accordance with IESNA LM-79 and LM-80.

DLC Listed:

This product is listed by Design Lights Consortium (DLC) as an ultra-efficient premium product that qualifies for the highest tier of rebates from DLC Member Utilities. DLC Product Code: PGJBD3A0

Construction

IP Rating:
Ingress Protection rating of IP66 for dust and water

Cold Weather Starting:

Minimum starting temperature is -40°C (-40°F)

Maximum Ambient Temperature:

Suitable for use in up to 40°C (104°F)

Housing:

Precision die-cast aluminum housing

Mounting:

Heavy-duty mounting bracket with hinged housing for easy installation

Recommended Mounting Height:

Up to 8 ft

Lens:

Tempered glass lens

Reflector:

Specular thermoplastic

Gaskets:

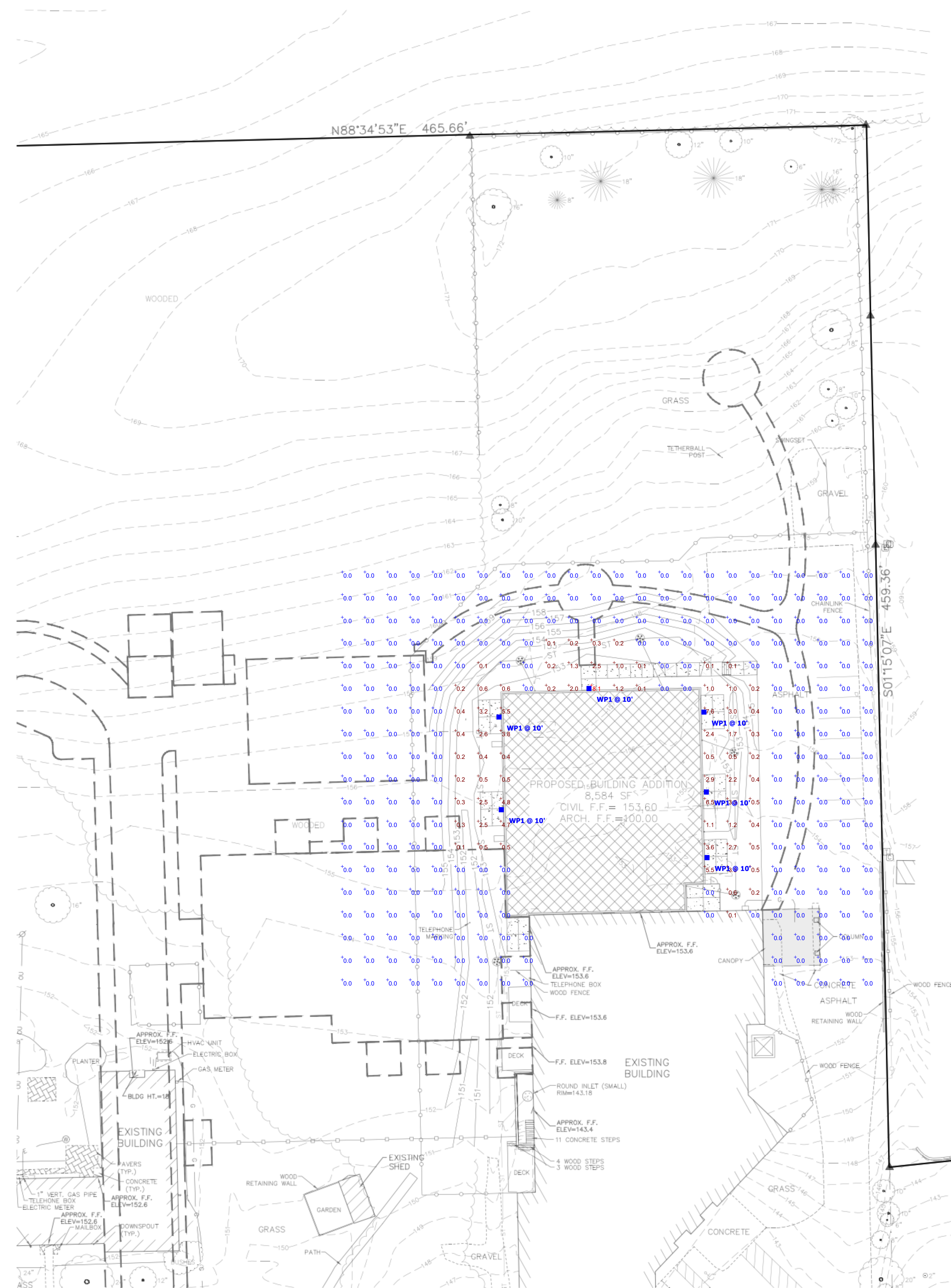
High-temperature silicone

Finish:

Formulated for high durability and long-lasting color

Need help? Tech help line: (888) 722-1000 Email: custserv@rablighting.com Website: www.rablighting.com
Copyright © 2021 RAB Lighting All Rights Reserved Note: Specifications are subject to change at any time without notice

Page 1 of 3

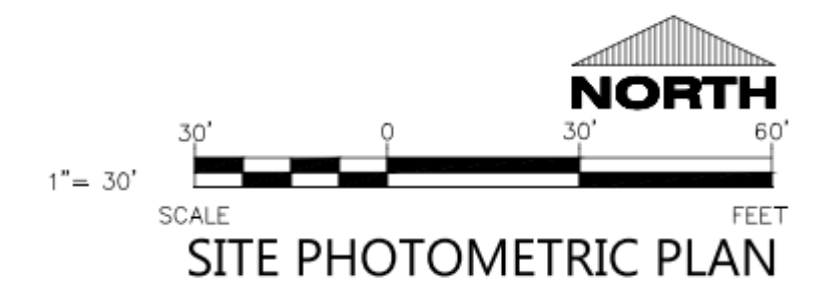


Schedule

Symbol	Label	QTY	Manufacturer	Catalog Number	Description	Number Lamps	Lumens per Lamp	LLF	Wattage
WP1	WP1	6	RAB LIGHTING INC. RC LIGHTING	SLIM12N	CAST BROWN PAINTED FINNED METAL HOUSING, 1 CIRCUIT BOARD WITH 1 LED, MOLDED PLASTIC REFLECTOR WITH SPECULAR FINISH, CLEAR FLAT GLASS LENS IN CAST BROWN PAINTED METAL LENS FRAME.	1	1924	0.9	15.9

Statistics

Description	Symbol	Avg	Max	Min	Max/Min Avg/Min
Calc Zone #1	+	0.3 fc	8.1 fc	0.0 fc	N/A N/A



EXCEL
ARCHITECTS • ENGINEERS • SURVEYORS
Always a Better Plan
100 Camelot Drive
Fond Du Lac, WI 54935
Phone: (920) 926-9800
www.EXCELENGINEER.com

PROJECT INFORMATION

PROPOSED MASTER PLAN FOR:
MONTESSORI SCHOOL OF WAUKESHA
2600 SUMMIT AVE. • WAUKESHA, WI 53188

PROFESSIONAL SEAL

PRELIMINARY DATES

FEB. 22, 2021

NOT FOR CONSTRUCTION

JOB NUMBER

2053880

SHEET NUMBER

PXP