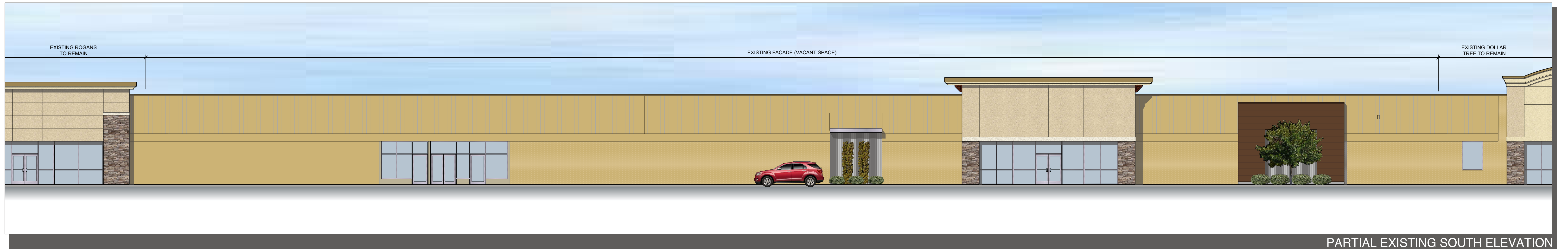


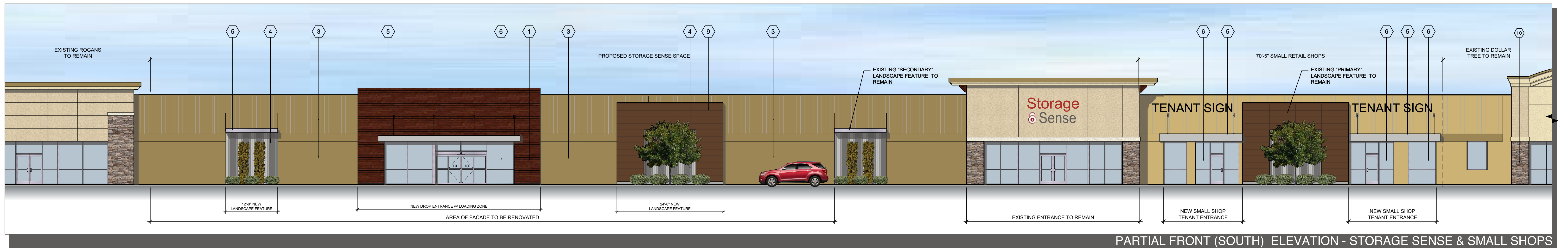
OVERALL EXISTING SOUTH ELEVATION

SCALE: 1"=20'



PARTIAL EXISTING SOUTH ELEVATION

SCALE: 1"=20'



PARTIAL FRONT (SOUTH) ELEVATION - STORAGE SENSE & SMALL SHOPS

SCALE: 3/32"=1'-0"

### MATERIAL FINISH LEGEND

- |  |  |  |  |  |  |
|--|--|--|--|--|--|
| 1 FIBER CEMENT SIDING, LAP SIDING BY NICHIIHA. COLOR - SW 6083 SABLE | 4 NEW CORRUGATED METAL PANEL ACCENT - GALVALUME FINISH                                   | 7 COMPACTOR DOOR - PAINTED TO MATCH MASONRY            | 10 CULTURED STONE - MOUNTAIN LEDGE BY ELDORADO STONE                     | 13 EIFS - NEW SANDPEBBLE FINISH EIFS, COLOR - DRYVIT: 386A - PURE CREAM        | 16 METAL FASCIA - COLOR SIERRA TAN                                   |
| 2 CMU PAINT TO MATCH EXISTING BRICK - SW 6143 BASKET BEIGE           | 5 NEW SUNSCREEN - METAL CANOPY - CLEAR ANODIZED ALUMINUM                                 | 8 PATCH EXISTING METAL PANELS AND PAINT TO MATCH BRICK | 11 EIFS - NEW SANDPEBBLE FINISH EIFS, COLOR - DRYVIT: 471-BEIGE          | 14 MASONRY TRASH ENCLOSURE - PAINT TO MATCH BUILDING AND COMPOSITE WOOD GATES. | 17 FIBER CEMENT LAP SIDING BY NICHIIHA - PAINTED TO MATCH SIERRA TAN |
| 3 PAINT EXISTING BUILDING (METAL PANELS AND CMU) SW 3144 DAPER TAN   | 6 NEW ALUMINUM STOREFRONT w/1" INSULATED, LOW-E, CLEAR GLAZING - CLEAR ANODIZED ALUMINUM | 9 NICHIIHA FIBER CEMENT PANELS - COLOR: MOCHA          | 12 EIFS - NEW SANDPEBBLE FINISH EIFS, COLOR - DRYVIT: 457B - WHOLE WHEAT | 15 DOCK SEAL AND DOCK BUMPER   | 18 OVERHEAD DOOR PAINTED TO MATCH BUILDING                           |