



NELSON LANDSCAPE INC.

Post Office Box 823
 Waukesha, WI 53187-0823
 ☎ 262-549-6111
 ☎ 262-549-9229
 🌐 www.nelsonlandscape.com

Sheet Title:

ENLARGED LANDSCAPE PLAN (SOUTH AREA)

Project:

LOT D
 THE SHOPPES
 AT FOX RIVER

WAUKESHA, WI

Client:

RAMCO-GERSHENSON, INC.
 31500 NORTHWESTERN HWY.,
 SUITE 300
 FARMINGTON HILLS, MI 48334

Plan Notes:

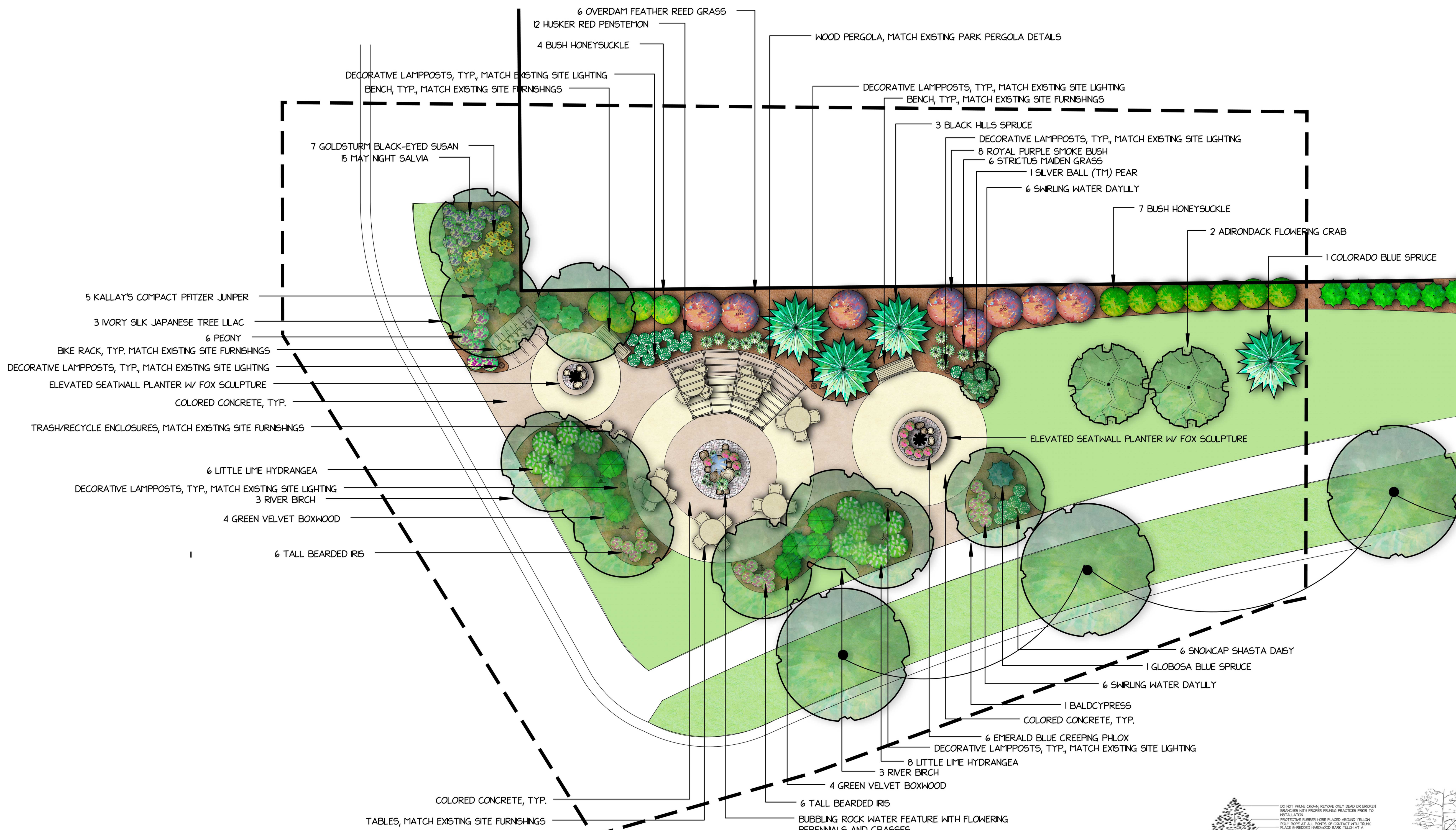
Designed By: C. J. N.
 Drawn By: C. J. N.
 Date: 7-09-14
 Revisions:

Notice:

Copyright © 2014.
 Nelson Landscape Incorporated

This landscape design plan is the sole property of Nelson Landscape Incorporated and may not be reproduced, altered, or copied in any manner or form without the permission of Nelson Landscape Incorporated. This plan may not be used for bidding purposes without prior consent by Nelson Landscape Incorporated.

This plan is subject to final on-site conditions and may be modified to account for unforeseen obstacles, other changes, or site modifications that were not made known at the time of preparation dated on this plan.



Qty	Botanical Name	Common Name	Size/Condition
Trees			
6	Betula nigra	RIVER BIRCH	10-12'/b. b.
2	Malus x 'Adirondack'	ADIRONDACK FLOWERING CRAB	2-2 1/2'/b. b.
3	Picea glauca var. densata	BLACK HILLS SPRUCE	7-8'/b. b.
1	Picea pungens f. glauca	COLORADO BLUE SPRUCE	7-8'/b. b.
1	Pyrus 'SILVER BALL'	SILVER BALL (TM) PEAR	2-2 1/2'/b. b.
3	Syringa reticulata 'Ivory Silk'	IVORY SILK JAPANESE TREE LILAC	8-10'/b. b.
1	Taxodium distichum	BALDCYPRESS	2 1/2'-3'/b. b.
Shrubs			
8	Buxus 'Green Velvet'	GREEN VELVET BOXWOOD	18-24'/b. b.
8	Cotinus coccinea 'Royal Purple'	ROYAL PURPLE SMOKE BUSH	24-36'/cont.
1	Diervilla lonicera	BUSH HONEYSUCKLE	18-24'/cont.
14	Hydrangea paniculata 'Jone'	LIME LIGHT HYBRID HYDRANGEA	18-24'/cont.
5	Juniperus x pfitzeriana 'Kallay's Compact'	KALLAY'S COMPACT PFITZER JUNIPER	18-24'/cont.
1	Picea pungens 'Globosa'	GLOBOSA BLUE SPRUCE	18-24'/cont.
Ornamental Grasses			
6	Calamagrostis x acutiflora 'Overdam'	OVERDAM FEATHER REED GRASS	#1 cont.
6	Miscanthus sinensis 'Strictus'	STRICTUS MAIDEN GRASS	#1 cont.
Perennials and Annuals			
12	Hemerocallis x 'Swirling Water'	SWIRLING WATER DAYLILY	#1 cont.
12	Iris germanica	TALL BEARDED IRIS	#1 cont.
6	Leucanthemum x superbum 'Snowcap'	SNOWCAP SHASTA DAISY	#1 cont.
6	Poa annua	PEONY	#1 cont.
12	Penstemon digitalis 'Husker Red'	HUSKER RED PENSTEMON	#1 cont.
6	Phlox subulata 'Emerald Blue'	EMERALD BLUE CREEPING PHLOX	#1 cont.
7	Rudbeckia fulgida 'Goldsturm'	GOLDSTURM BLACK-EYED SUSAN	#1 cont.
15	Salvia nemorosa 'Mainacht'	MAY NIGHT SALVIA	#1 cont.

PLANTING NOTES:
 1) CONTRACTOR SHALL VERIFY LOCATION OF ALL ON-SITE UTILITIES PRIOR TO COMMENCING ANY WORK ON-SITE. WI STATE STATUTE 182.0175 REQUIRES THREE WORK DAYS NOTICE BEFORE YOU EXCAVATE. CALL DIGGER'S HOTLINE AT 1-800-242-8511.
 2) SUPPLY AND INSTALL ALL WISCONSIN GROWN NURSERY STOCK. GUARANTEE ALL STOCK FOR A PERIOD OF ONE YEAR. ALL PLANTING MATERIAL IS TO MEET AMERICAN STANDARDS FOR NURSERY STOCK ANSI Z601-2004. ALL PLANT MATERIAL IS TO BE PLANTED IMMEDIATELY AFTER ARRIVAL AND UNLOADING ON SITE. PLANT TYPES, SIZES, AND QUANTITIES ARE ACCORDING TO THE PROPOSED PLANS. IF ANY DISCREPANCIES ARE PRESENT BETWEEN PLANT LEGEND AND GRAPHIC DEPICTION, GRAPHICALLY DEPICTED QUANTITIES SHALL HOLD PRECEDENCE.
 3) ACTUAL LOCATIONS OF PLANT MATERIAL ARE SUBJECT TO FINAL SITE LAYOUT AND CONDITIONS AND MAY BE ADJUSTED ACCORDINGLY.
 4) GUY AND STAKE ALL LARGE TREES AND EVERGREENS.
 5) ALL PLANTS ARE TO BE BACKFILLED WITH A 50/50 MIX OF PLANT STARTER AND TOPSOIL BLEND AND IS TO BE FREE OF ROOTS, ROCKS LARGER THAN 1" IN DIAMETER, SUBSOIL DEBRIS, AND WEEDS.
 6) OPEN AND REMOVE THE TOP BURLAP AND TWINE OR STRING FROM ALL BALLED AND BURLAPPED PLANTS AND SET ALL PLANTS AT FINISHED GRADE.
 7) SUPPLY AND INSTALL 3-4" OF SHREDDED HARDWOOD BARK MULCH IN ALL PLANTING BEDS, AND 1-1 1/2" IN ALL PERENNIAL BEDS. TREAT ALL AREAS WITH A PRE-EMERGENT HERBICIDE (GRANULAR FORM) 'TRIFLORIN' OR APPROVED EQUAL FOLLOWING ALL MANUFACTURER'S WRITTEN INSTALLATION INSTRUCTIONS PRIOR TO PLACING MULCH.
 8) SUPPLY AND INSTALL 3-4" OF SHREDDED HARDWOOD MULCH 1" PAST THE DRIP LINE OF ALL INDIVIDUAL TREES. DO NOT PLACE MULCH AGAINST TRUNK OF TREE.
 9) SUPPLY AND INSTALL BLACK VINYL EDGING 'ACE OF DIAMOND' MANUFACTURED BY VALLEYVIEW INDUSTRIES OR APPROVED EQUAL IN ALL PLANTING BEDS THAT ADJOIN TURF AREAS ACCORDING TO THE MANUFACTURER'S WRITTEN INSTALLATION INSTRUCTIONS.
 10) ALL TURF AREAS ARE TO BE FINE-GRADED. ALL TURF AREAS ARE TO BE SEEDED, AREAS ARE TO BE SOWN AT THE MANUFACTURER'S RECOMMENDED RATES AND COVERED WITH A CLEAN OAT STRAW. TURF AREAS ARE TO BE SOWN WITH NELSON LANDSCAPE'S CUSTOM BLENDED SEED FOR LAWNS AND IS TO BE APPLIED AT THE RECOMMENDED RATE, A STARTER FERTILIZER APPLIED, AND COVERED WITH A CLEAN OAT STRAW. ANY AREAS WHERE POTENTIAL EROSION EXISTS DUE TO WIND OR WATER OR OTHER MEANS INCLUDING ALL SLOPES OF 3:1 OR GREATER SHALL BE COVERED WITH STRAW EROSION CONTROL BLANKETS 'DS-75' MANUFACTURED BY NORTH AMERICAN GREEN, INSTALLED TO MANUFACTURER'S WRITTEN INSTALLATION INSTRUCTIONS.

