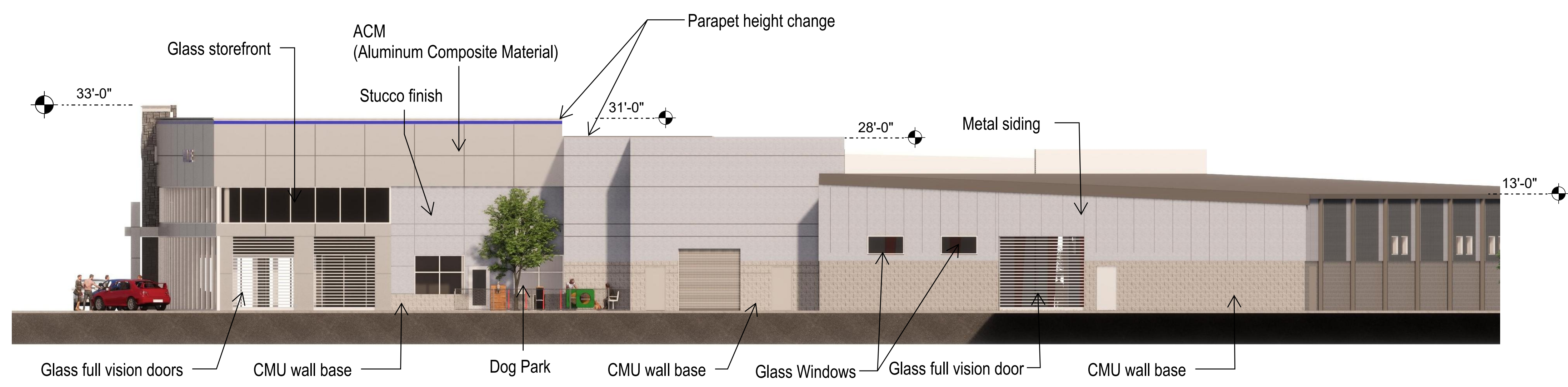
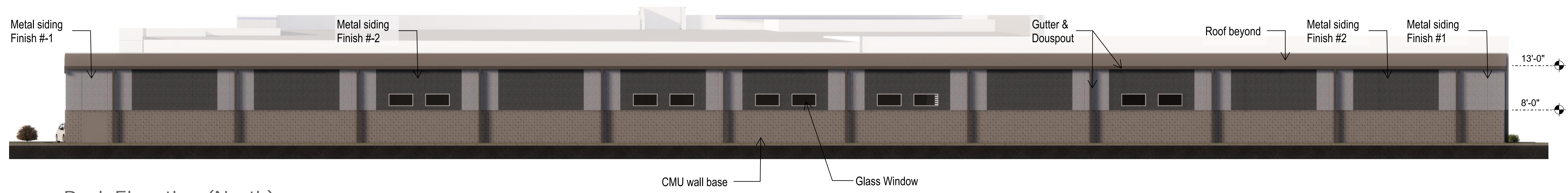


West Elevation

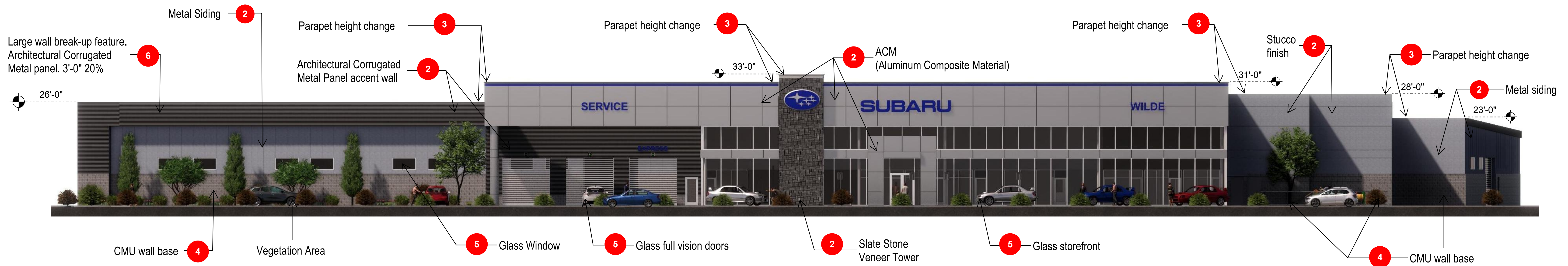


East Elevation



Back Elevation (North)

ELEVATIONS



Front Elevation (South)

City of Waukesha

Specific Policies:

- 1 Rooftop Mechanicals** - All HVAC devices mounted on the roof or eave areas of any building are to be screened by parapet walls or other acceptable architectural screening the top of which is at least as high as the top of the device being screened.
- 2 Wall Materials**—Durable exterior materials shall be used. Materials such as masonry, stone, stucco, and wood are encouraged. Except for M-1 and M-2 districts, metal is not allowed as the primary building material, though it may be used for accents.
- 3** A minimum of twenty (20) percent of all of the combined linear roof eave or parapet lines of the structure shall employ differences in height.
- 4** The lower portion of each wall shall be brick, stone, or masonry to minimize damage to the building.
- 5 Windows**—Window and door placement should be used to avoid large blank walls on elevations visible from the street or to the public. Every façade that faces a public street must contain at least twenty (20) percent of the wall area in display windows, windows, or doorways. This standard is lowered to ten (10) percent for all other walls that are visible to the public
- 6 Wall Planes**—Single, large building masses shall be avoided. A minimum of twenty (20) percent of each façade shall employ actual façade protrusions or recesses such as fascias, balconies,

EXTERIOR MATERIALS:

Slate Stone Veneer:

Camara/ Shadow Grey/ 1/4" min. thickness/ natural cleft face, gauged back/ Pattern #1

Aluminum Composite Material:

Subaru Alpolic ACM aluminum panel system - Silver Metallic.

Glass Storefronts and Windows:

Aluminum mullions with clear anodized coating and translucent insulated glazing system.

Stucco Finish:

Stucco on lath, semi-smooth finish - SW7071 Gray Screen

CMU wall base:

Split face CMU - Trenwyth Rutherford Gray or equal.

Metal Siding:

Metlspan-Nucor Flat Architectural Insulated Metal Panel system or equal.
CF Mesa type, with embossed texture and concealed clips.

Finish # 1: Light Gray.
Finish # 2: Dark Gray.

Architectural Corrugated Metal Panel:

Metlspan-Nucor Corrugated Architectural Metal Panel. CS-660 Concept series, horizontal single-skin wall panel with concealed fasteners or equal. Dark gray color.



Aerial



3D VIEW 1



3D VIEW 2



3D VIEW 3