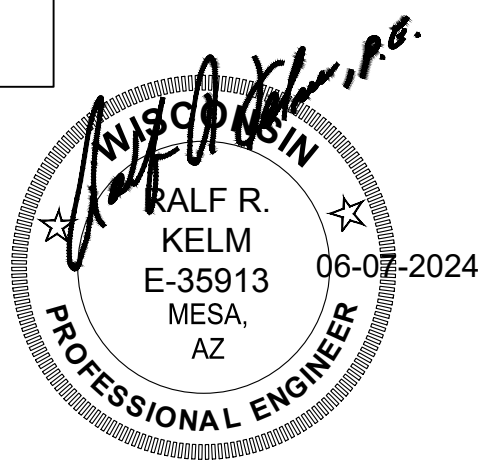
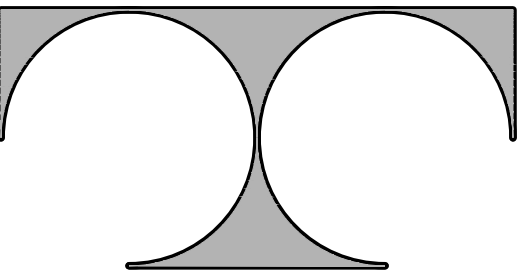


- GENERAL LANDSCAPE NOTES:
1. Topsoil return to depth of 4" minimum is by excavating contractor. Berms (if applicable) are by others. Returned topsoil to have no rock larger than 1", construction debris and/or roots in the soil. Contact general contractor if soil is not acceptable for proper plant growth.
  2. Always contact Diggers Hotline (800-242-8511) or JULIE 811 (or 1-800-892-0123) before proceeding with any work.
  3. Landscape contractor is required to visit the site and review all civil plans related to the project. The civil plans take precedence over the landscape plans.
  4. Plant material to be of the highest quality available and should not include # 2 grade trees, evergreens or shrubs. Landscape contractor is to verify plant quantities due to changes in the overall phase I landscape plan.
  5. Labeled plants have precedence over the plant table. Verify quantity with a hand takeoff of the plan. Any substitutions of plant type, quantity or size must be approved by city forester..
  6. Planting beds shall receive a 3" layer of high quality non-dyed shredded hardwood mulch. 3' diameter tree rings shall be installed around all trees and evergreens in the turf areas. Perennial and annual beds shall receive between a 1-2" layer of shredded bark mulch.
  7. Spade cut plant beds and tree rings with a 4" deep shovel cut.
  8. Perennial and annual beds to have a 2" layer of compost mulch incorporated 6" deep into the planting bed before installation of plants.
  9. Seeded lawn areas to have high quality Bluegrass seed blend for sunny areas, shade areas to have a Bluegrass and Fescue blend of seed. See civil plans for turf restoration. Apply a 10-10-10 starter fertilizer after turf has germinated. Follow manufactures direction on fertilizer application rates.
  10. Erosion blanket shall be installed on seeded slopes with a grade of 3:1 or less. 90 day single net, double net or Turf Reinforcement Mats shall be installed per the required use. Follow manufactures stapling guidelines to ensure proper stabilization. Install erosion blanket for dormant seed applications (after November 1st) or mid-summer installations or where ever applicable to promote healthy turf establishment.
  11. Landscape contractor is responsible to maintain the site for a period of 45 days after substantial completion of project. This will include watering, mowing of turf areas as needed, weeding plant beds, maintaining a clean site and other activities to ensure proper growth of the landscape.
  12. Warranty of plants, trees, evergreens, shrubs shall be for a period of 18 months from date of substantial completion. Perennials, ornamental grasses, annuals shall be guaranteed for one (1) growing season. One replacement will be required of each dead plant at the end of the warranty period.

GENERAL LANDSCAPE LEGEND	
	(5) DENSE YEWS
	PREMIUM 60 TURF-SEED & DN EROSION BLANKET
	NO-MOW FESCUE & DN EROSION BLANKET

PLANT SCHEDULE	
SHRUB EVERGREENS: TAXUS x MEDIA 'DENSIFORMIS'	
COMMON NAME: DENSE YEW	
SIZE: 24"	
CONTAINER: B4B	
QUANTITY: 5	





TDI ASSOCIATES, INC.  
ARCHITECTURE & PLANNING

25217 SOUTH WIND LAKE ROAD  
WIND LAKE, WISCONSIN 53185  
PHONE 262-409-2530

QUALITY FIREPLACE INC.  
ADDITION

1337 PEARL ST.  
WAUKESHA, WISCONSIN

TDI ASSOCIATES, INC.  
All Rights Reserved

OWNERSHIP OF DOCUMENTS

This document, and the ideas and design incorporated herein, as an instrument of professional service, is the sole property of TDI Associates, Inc., and is not to be used in whole or in part for any other project or purpose without the expressed written authorization of TDI Associates, Inc.

Sheet Title  
SITE DEVELOPMENT PLAN

Issued For: REV #1 Date: 06-07-2024

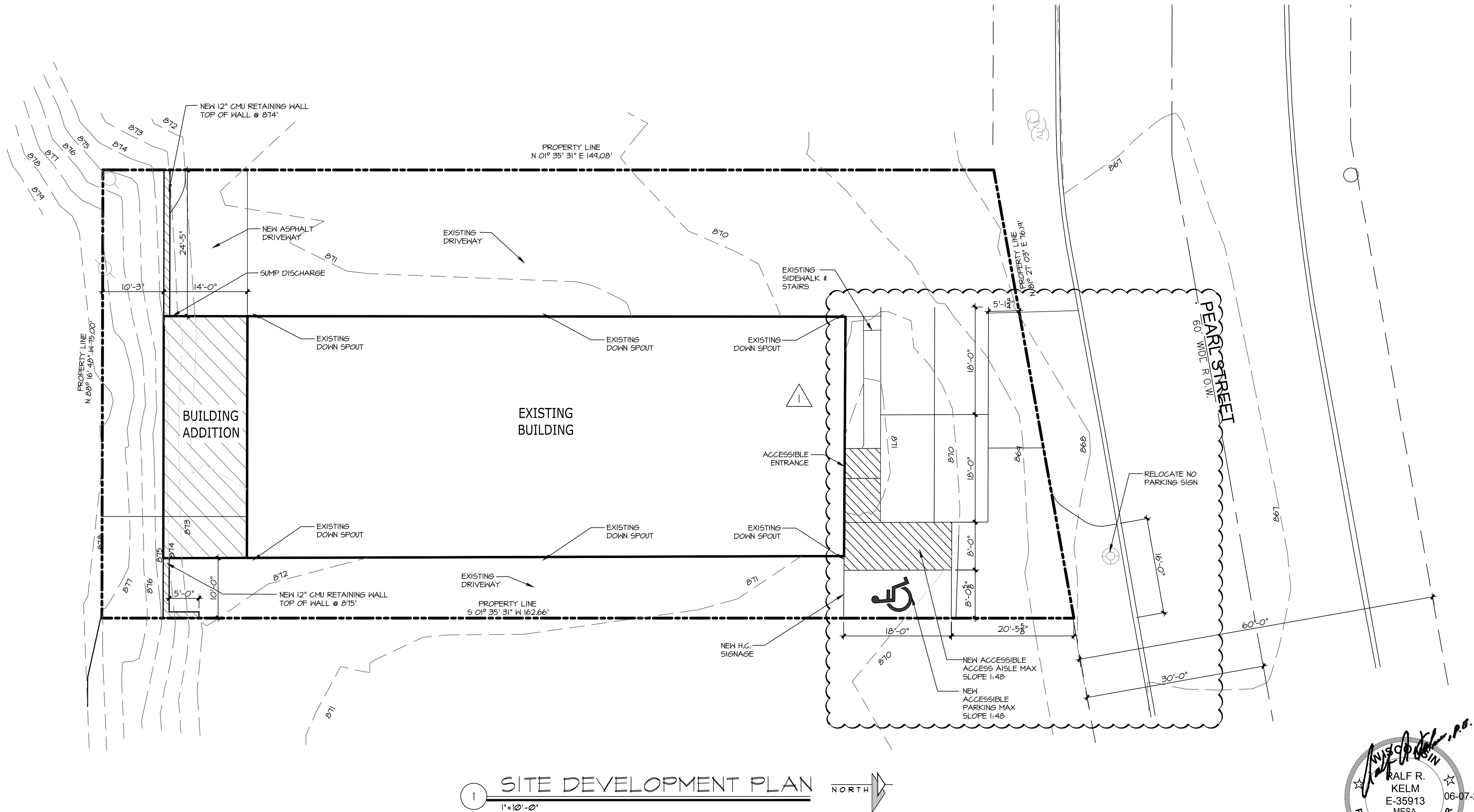
Date: 05-21-2024

Job NO.: 23141.100

Drawn By: RJH

Sheet No.

SD1.1



1 SITE DEVELOPMENT PLAN  
1" = 10'-0"

