

EXTERIOR ELEVATIONS

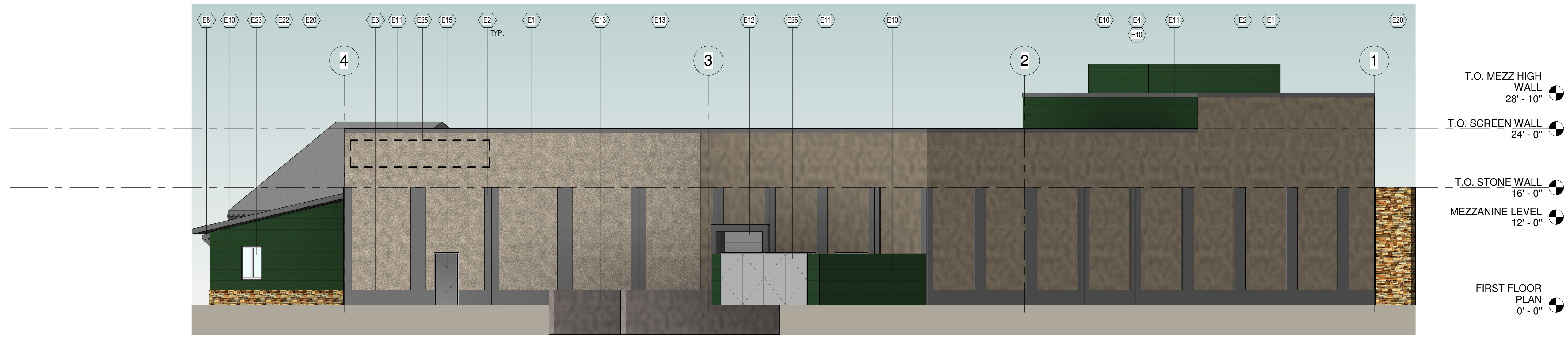
SHEET TITLE

NEW BUILDING FOR:
GOOD HARVEST MARKET
SILVERNAIL ROAD
WAUKESHA, WI

JOB: 2694
DRAWN: CW, KJ
CHECKED: DF
DATE: 06-11-14

SHEET:
A5.1

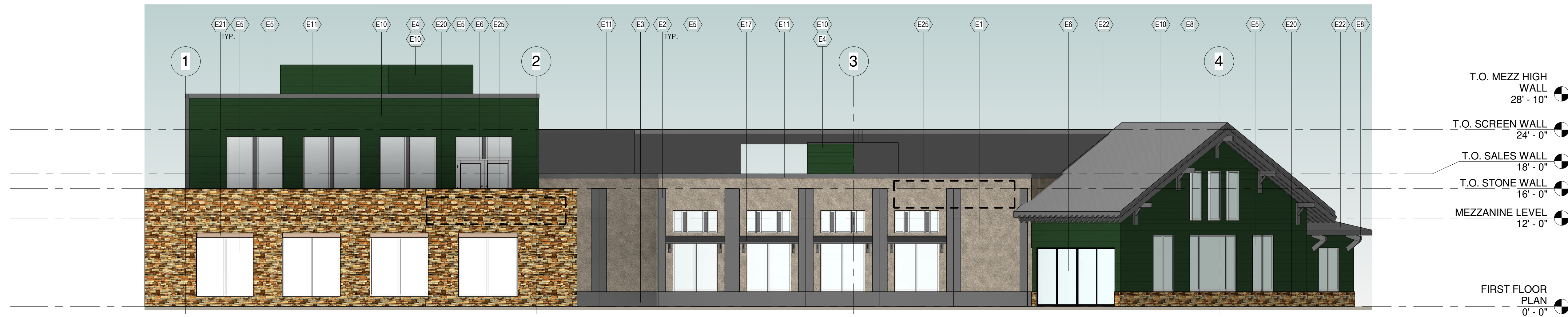
KEYNOTE LEGEND	
VALUE	FLOOR PLAN CODED NOTES
E1	EXTERIOR EIFS - TYPICAL FOR ALL FOUR ELEVATIONS, EXCEPT FOR ACCENT COLOR AREAS WHICH ARE AS NOTED. COLOR: MATCH DRYVIT MANDR WHITE.
E2	EXTERIOR EIFS VERTICAL ACCENT. COLOR: MATCH SW 6109 "HOPSACK".
E3	CONCRETE BASE BELOW EIFS WALL FINISH. TYPICAL. COLOR: MATCH SW 6109 "HOPSACK".
E4	SIDING CLAD RTU SCREEN WITH CAP TRIM COLOR TO MATCH ARCHITECTURAL METALS (LOCATED BEYOND) REFER TO STRUCTURAL DRAWINGS.
E5	PRE FINISHED CLEAR ANODIZED ALUMINUM FRAMED (THERMALLY BROKEN) AND 1" INSULATED LOW-E CLEAR GLASS WINDOW UNITS - REFER TO REFERENCED SECTIONS.
E6	PRE FINISHED CLEAR ANODIZED ALUMINUM FRAMED (THERMALLY BROKEN) AND 1" INSULATED LOW-E CLEAR GLASS ENTRY UNITS - REFER TO REFERENCED SECTIONS.
E8	WOOD (OR WOOD LOOK) ROOF CORBELS.
E10	PAINTED FIBER CEMENT EXTERIOR SIDING.
E11	PRE FINISHED METAL 24 GA. COPING COLOR SHALL BE "CLEAR ANODIZED FINISH".
E12	9X10 INSULATED OH DOOR FACTORY FINISHED WITH DOCK SEALS, DOCK LEVELERS AND BUMPER.
E13	CONCRETE RETAINING/GUARD WALL 3'-6" HIGH AFF.
E15	PAINTED HOLLOW METAL SERVICE DOOR AND FRAME WITH EMERGENCY EGRESS CODE REQUIRED LIGHTING (COLOR TO MATCH ADJACENT WALL COLOR).
E17	24 GA. PREFINISHED STANDING SEAM METAL SUNSHADES WITH REQUIRED SUPPORTS, TRIMS AND FLASHINGS.
E20	LOCALLY SOURCED STONE VENEER
E21	PAINTED STEEL LINTEL
E22	24 GA. PREFINISHED STANDING SEAM METAL ROOF PANELS WITH TRIMS AND FLASHINGS.
E23	PRE FINISHED CLEAR ANODIZED ALUMINUM FRAMED (THERMALLY BROKEN) AND 1" INSULATED LOW-E CLEAR GLASS DRIVE-THRU WINDOW UNIT.
E24	GALVANIZED STEEL GUARDRAIL - PAINTED.
E25	PROPOSED EXTERIOR SIGNAGE LOCATION, BY OWNER.
E26	PAINTED WOOD CLAD GALVANIZED STEEL FRAMED SWING GATES MOUNTED ON 4" DIA. GALVANIZED POSTS.



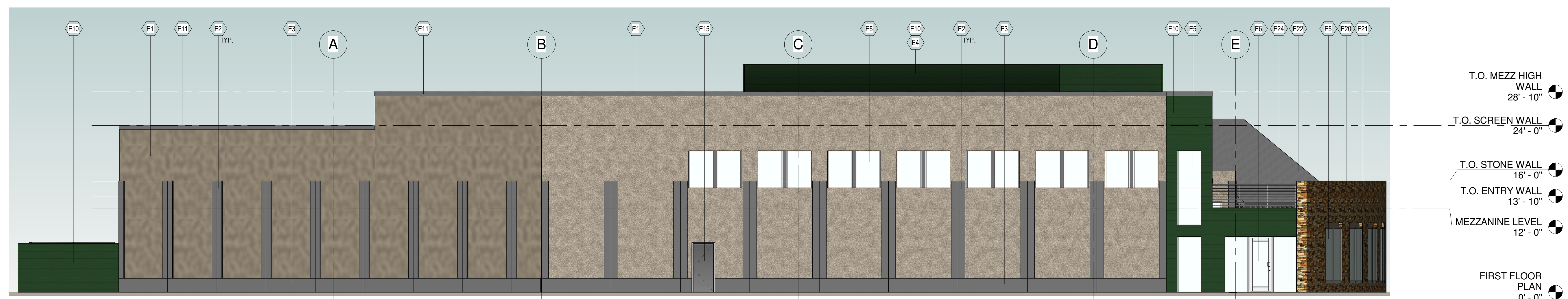
1 NORTH ELEVATION
1/8" = 1'-0"



2 EAST ELEVATION
1/8" = 1'-0"



3 SOUTH ELEVATION
1/8" = 1'-0"



4 WEST ELEVATION
1/8" = 1'-0"