



Legal:

The content of this guide may not be sold, modified, or distributed in anyway without the expressed written consent of the publisher. Reprinting, copying, or any other form of distribution for commercial or non-commercial purposes is strictly prohibited and will be prosecuted.

Disclaimer:

Every attempt has been made to provide the most accurate information as possible. However, the publisher accepts no liability for any wrong information as a result of purchasing and / or reading this guide.

You can follow this guide at your own risk the publisher accepts no responsibility for any injury to any person.

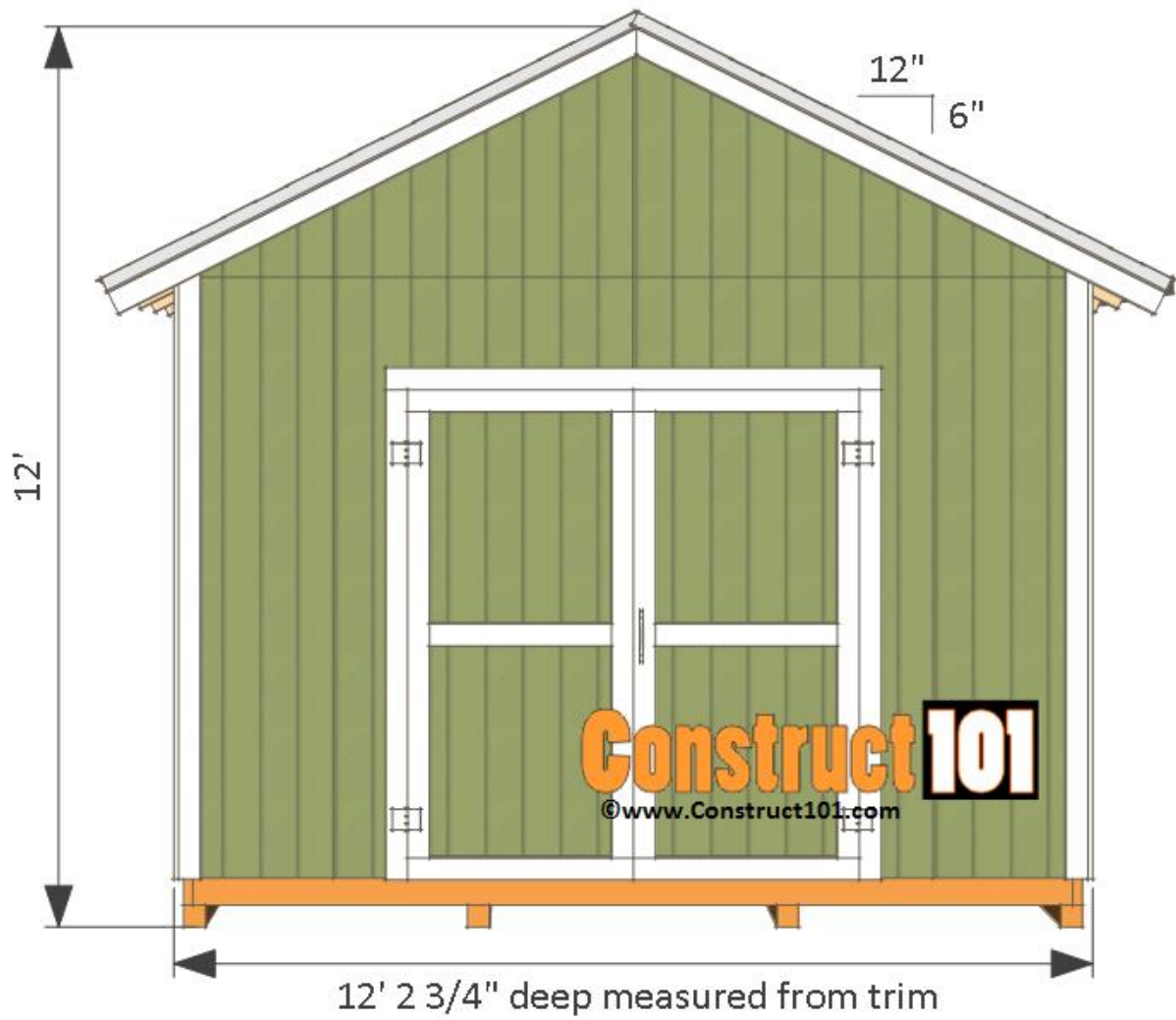
Copyright © www.Construct101.com

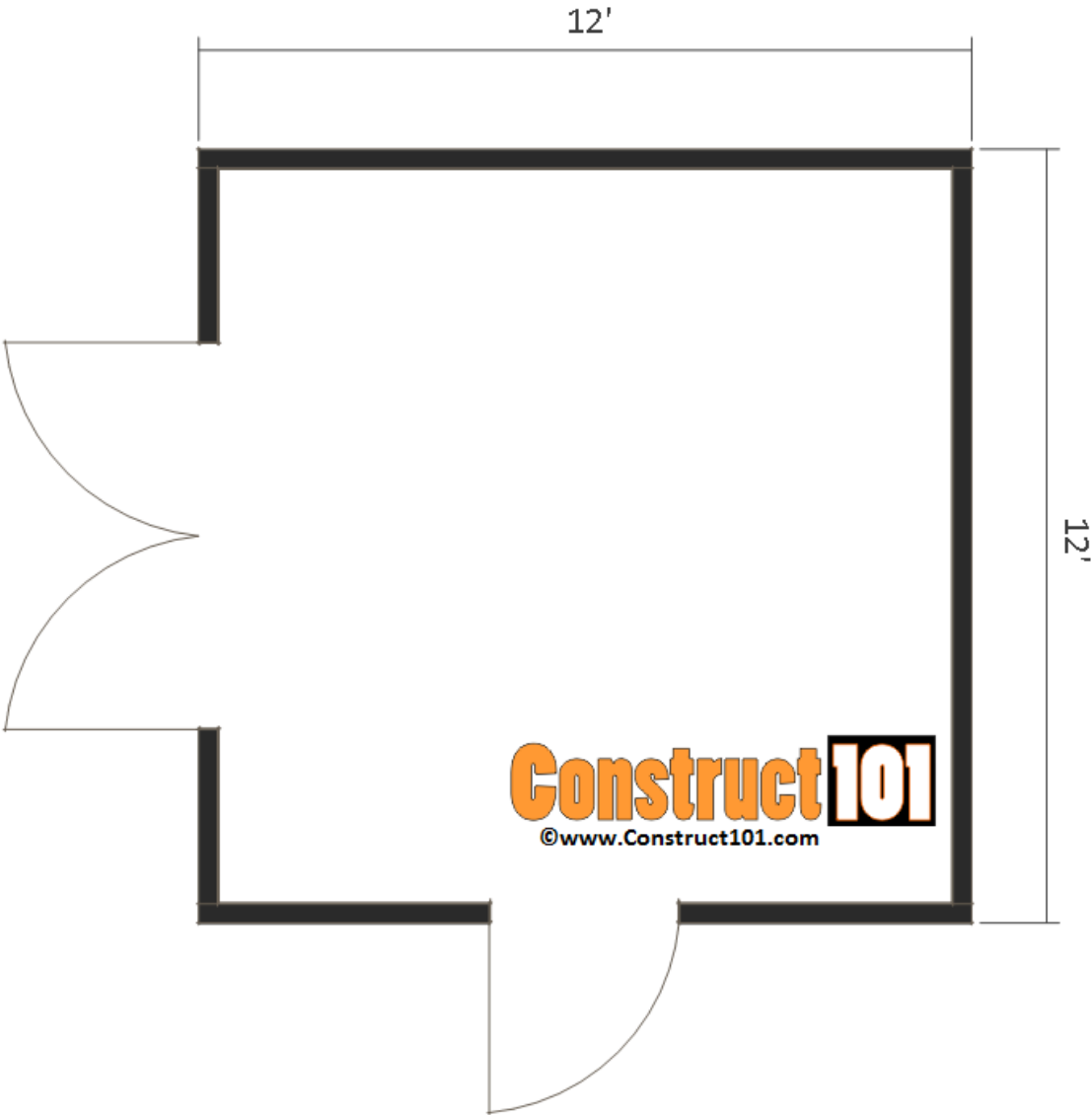
All rights reserved

ISBN-13:

ISBN-10:







12x12 Shed Plans – Gable Shed – Material List

Shopping List

2 – pressure treated 2x6 – 12'

10 – pressure treated 2x6 – 12'

4 – pressure treated 4x4 – 12'

81 – 2x4 – 8'

22 – 2x4 – 12'

4 – 2x6 – 8'

10 – 1x4 – 8'

5 – 3/4" tongue and groove plywood – 4'x8' sheets

15 – t1-11 exterior siding plywood – 4'x8' sheets

8 – 1/2" plywood – 4'x8' sheets

shingles

roof tacks

roofing felt

staples

drip edge

3 1/2" galvanized nails

1 1/4" galvanized finishing nails

2" galvanized nails

2" deck screws

6 – door hinges

2 – door handles

Cutting List

2 – pressure treated 2x6 – 12'

10 – pressure treated 2x6 – 11' 9"

4 – pressure treated 4x4 – 12'

16 – 2x4 – 12'

6 – 2x4 – 11' 5"

48 – 2x4 – 7' 6"

20 – 2x4 – 7' 8 11/16"

10 – 2x4 – 2' 8 3/8"

16 – 2x4 – 2' 1 3/4"

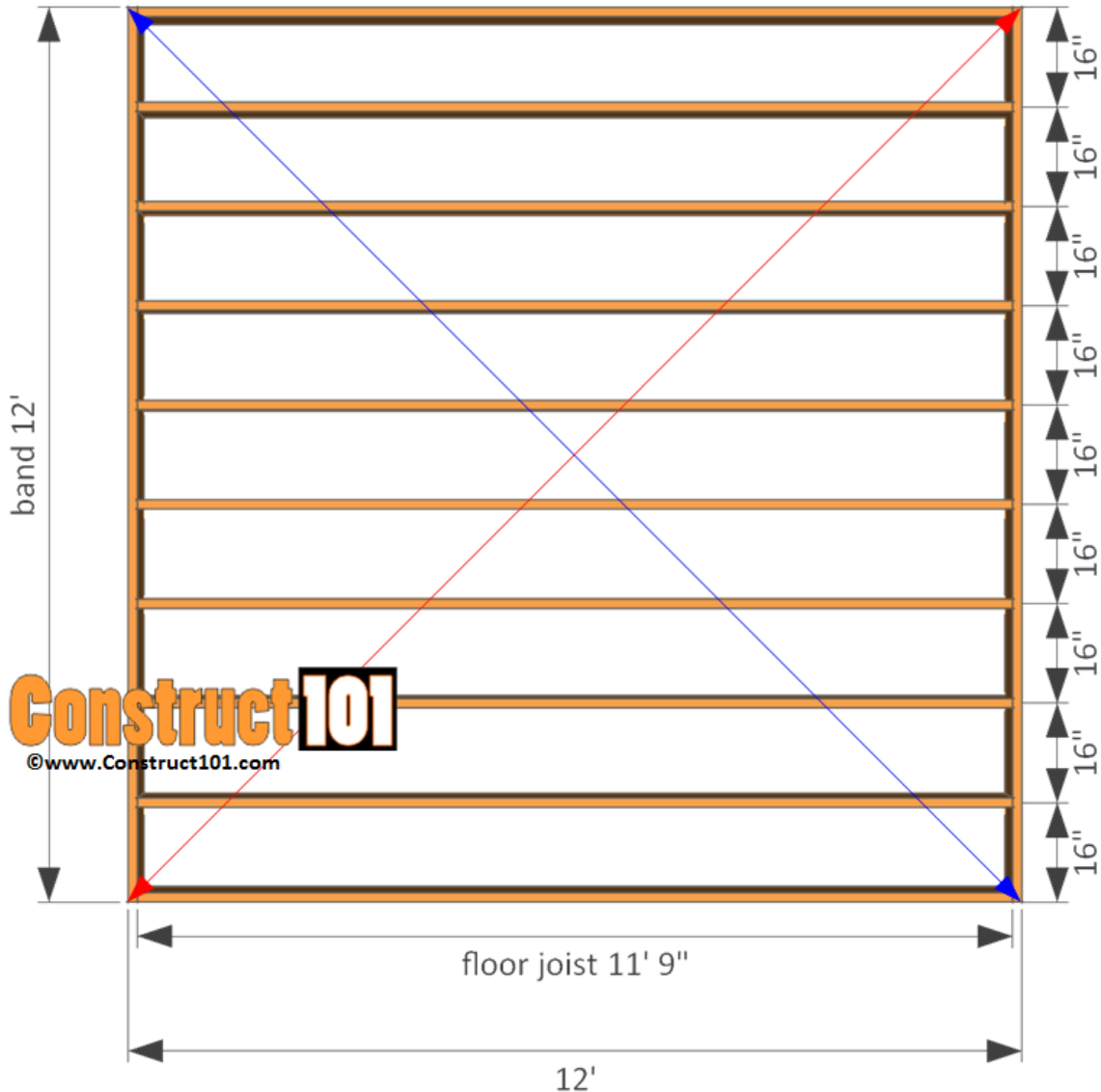
4 – 2x6 – 7' 8 11/16"

10 – 1x4 – 8' (cut to size)

5 – 3/4" tongue and groove plywood – 4'x8' sheets (cut to size)

15 – t1-11 exterior siding plywood – 4'x8' sheets (cut to size)

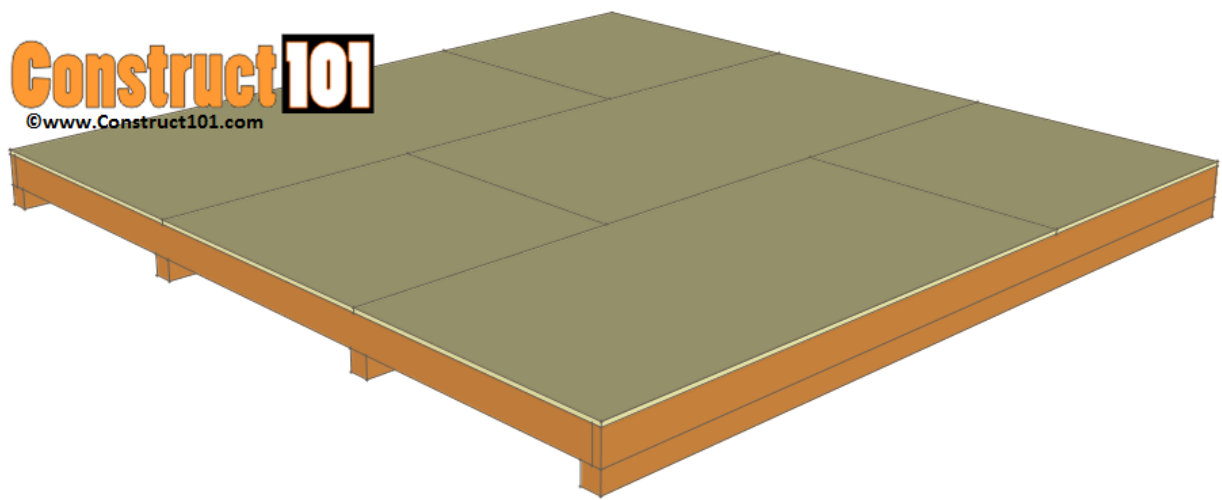
8 – 1/2" plywood – 4'x8' sheets (cut to size)



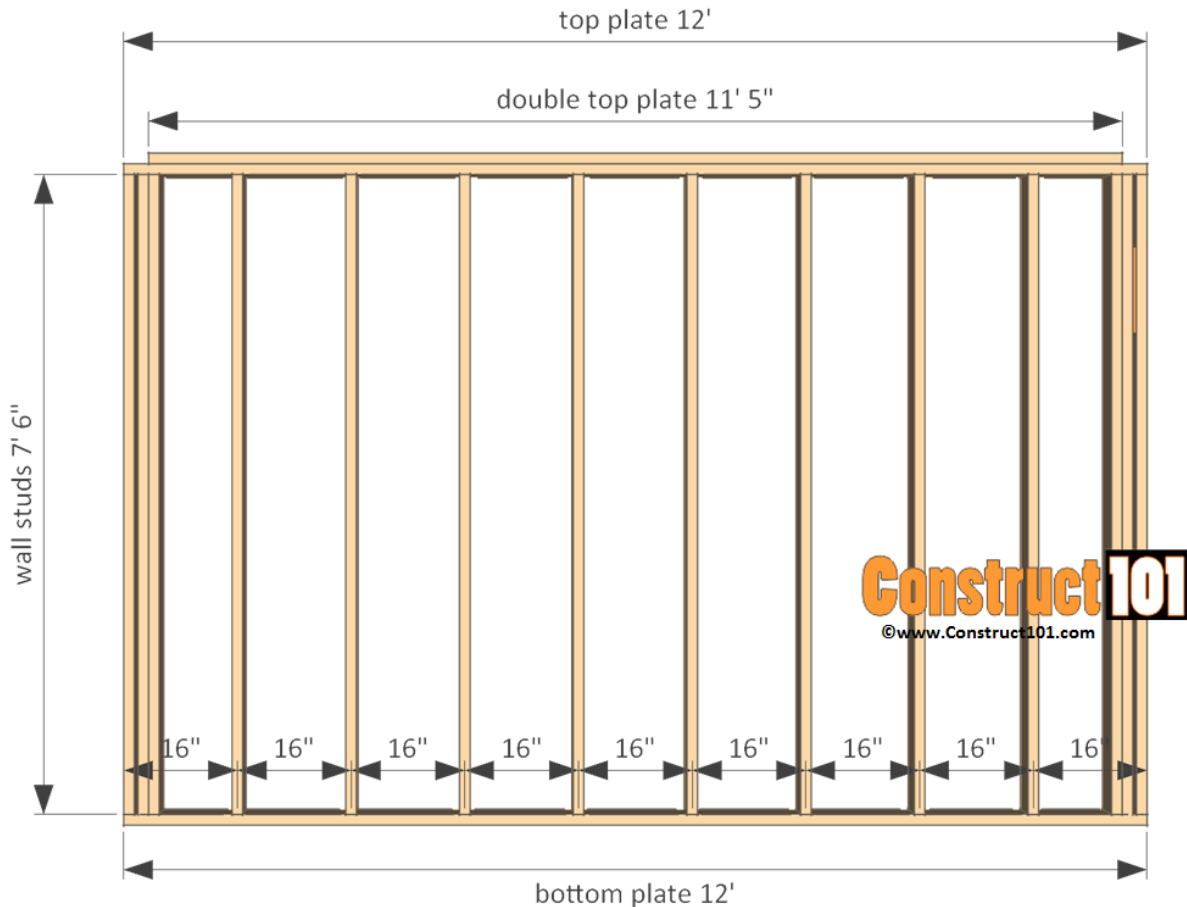
The shed floor is built with pressure treated 2x6's and pressure treated 4x4's.

Cut two 2x6's to 12' long for the band. Cut ten 2x6's to 11' 9" long for the floor joist. Nail 3 1/2" nails through the 2x6 band and into the floor joist. Floor joist 16" O.C.

Attach the 12' long 4x4 pressure treated skids to the bottom of the floor frame. Square out the floor frame by measuring diagonally until both sides measure the same. Secure the 4x4 skids by nailing 3 1/2" nails through the floor frame and into the 4x4 skids.



Cut to size and install the 3/4" tongue and groove plywood. Secure the floor plywood with 2" deck screws.



The front and back wall frame is built using 2x4 lumber.

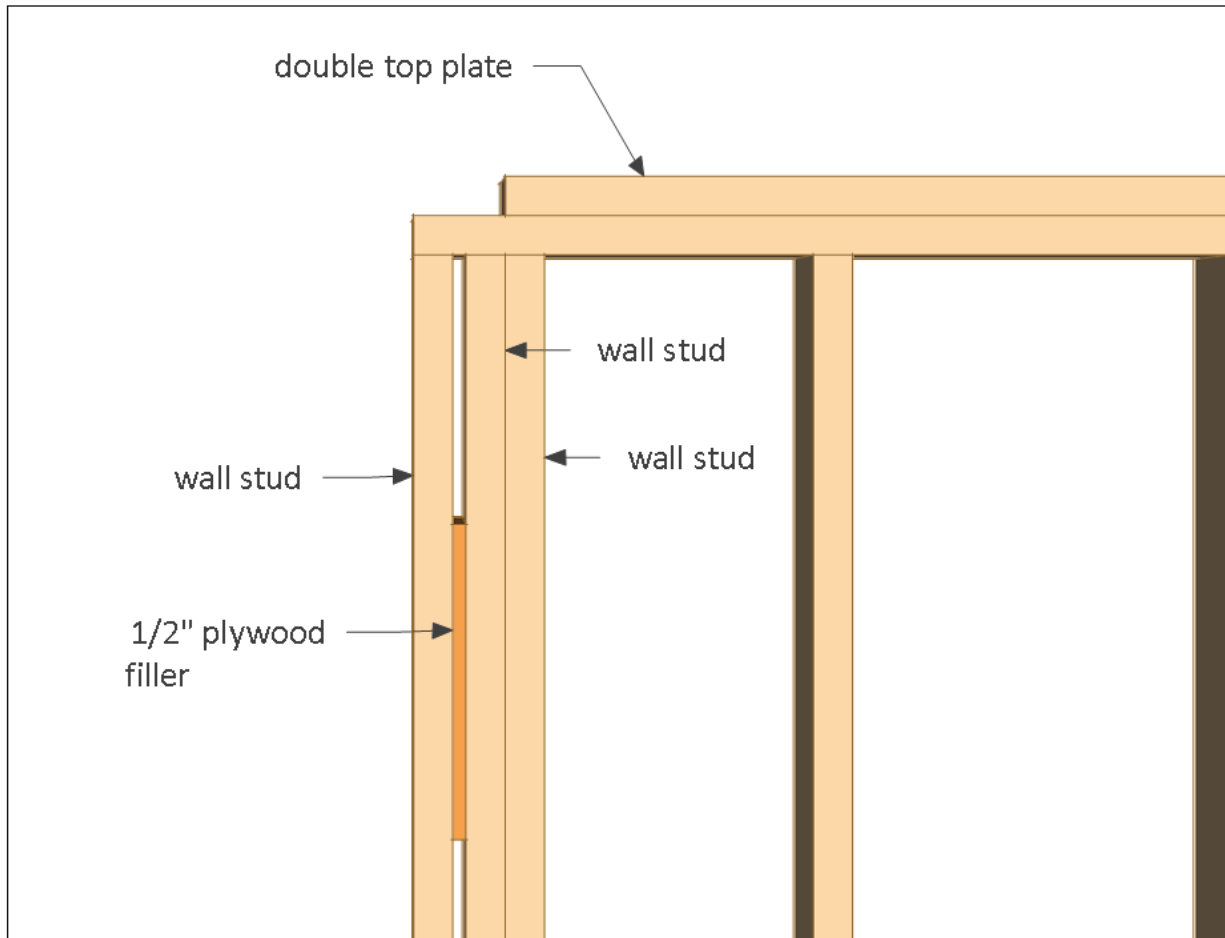
The wall studs are 16" O.C.

Assemble the back wall frame as shown on illustration above (see illustration below for close up view).

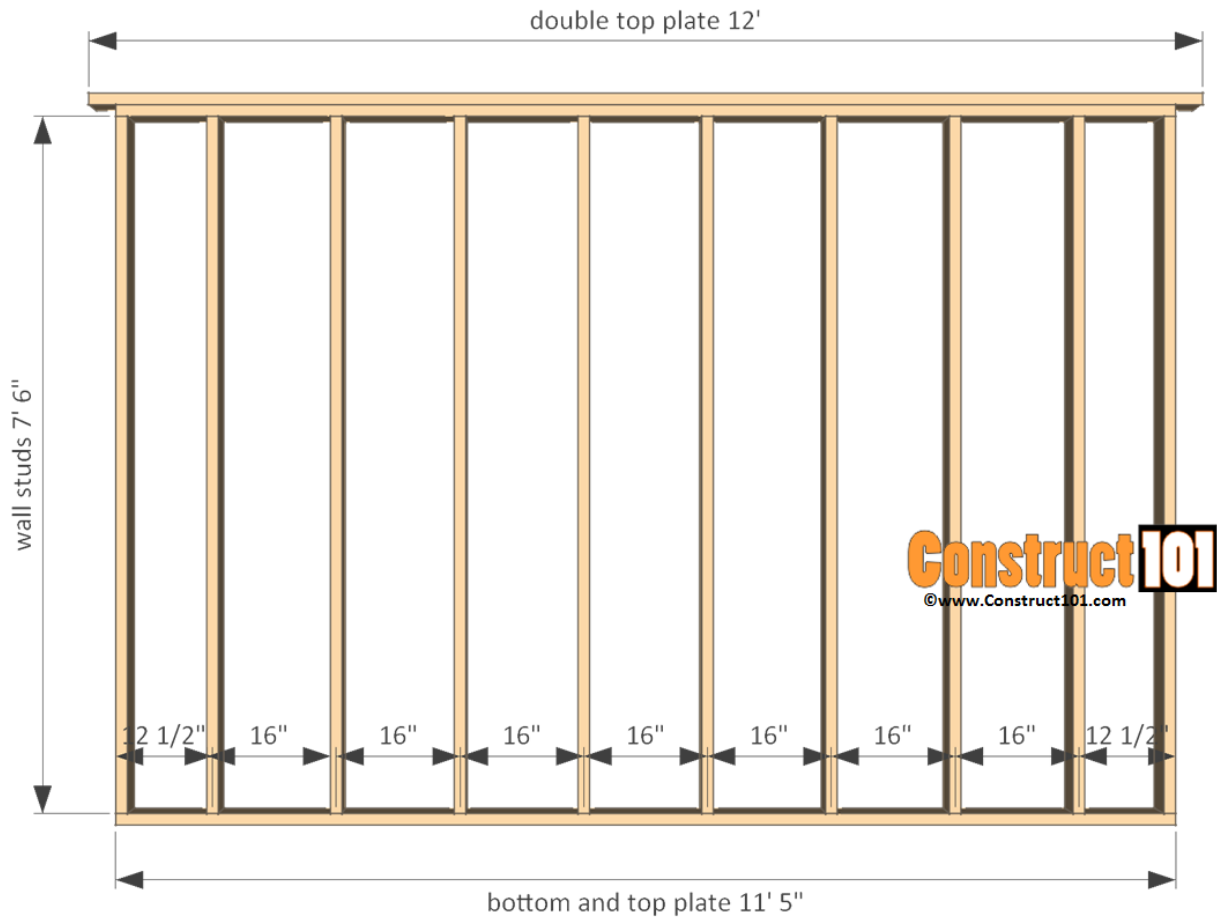
The front wall frame will have a door and window, for instructions on framing the door and window see the pages attached:

- Shed Door Plans
- Wall Framing – Adding a Shed Window

Assemble the front and back wall frame using 3 1/2" nails.



Here is a close up look of the front and back wall frame ends.

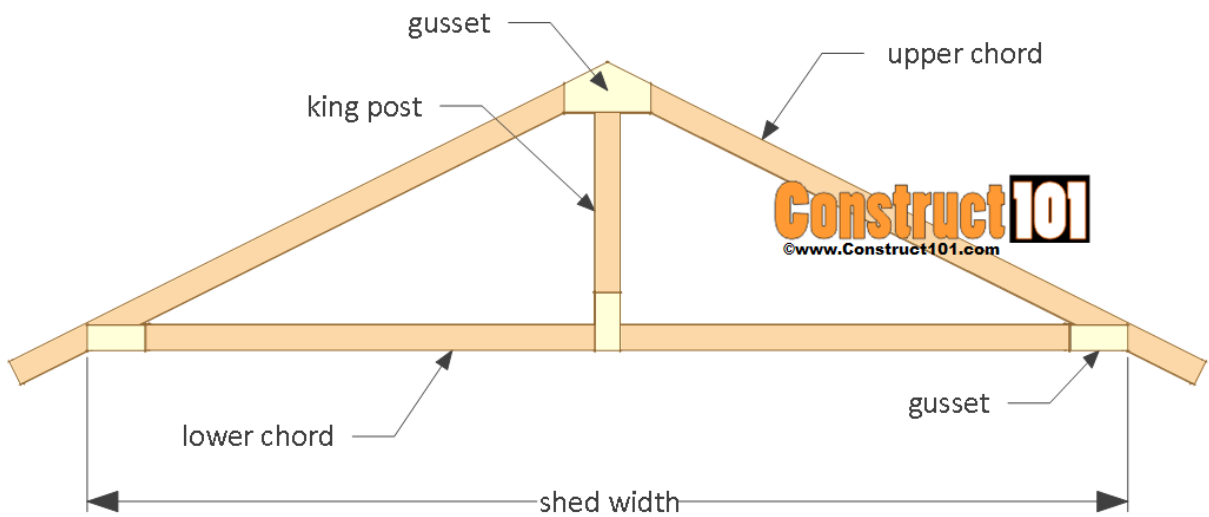


Cut the 2x4's as shown on illustration above for the side walls.

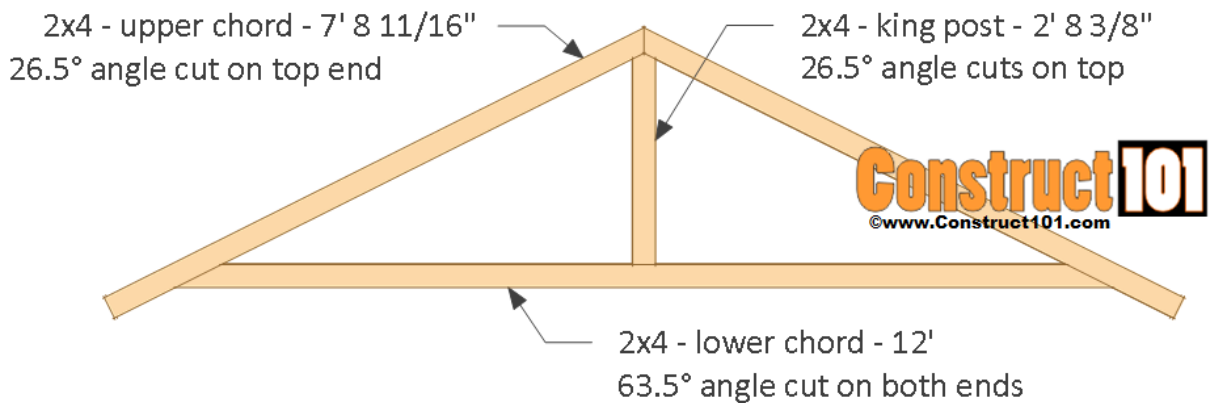
Wall studs are 16" O.C.

If you will be adding a double door to the side wall of the shed see the attached page for details: Shed Door Plans

Assemble the side wall frame using 3 1/2" nails.

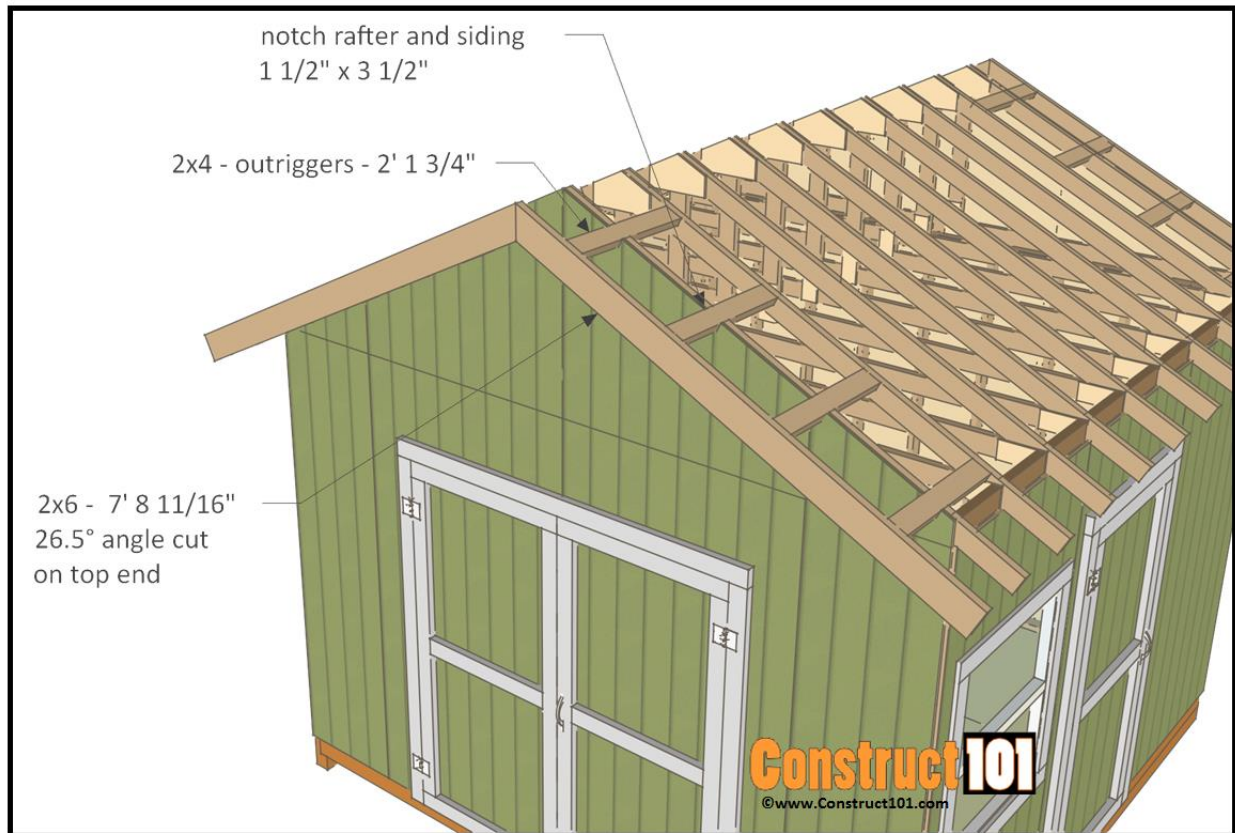


See illustration above for truss details.



The truss is built using 2x4's.

Cut the 2x4's as shown on illustration above. The truss are assembled using 1/2" plywood gussets. Nail 2" nails through the gusset and into the truss.



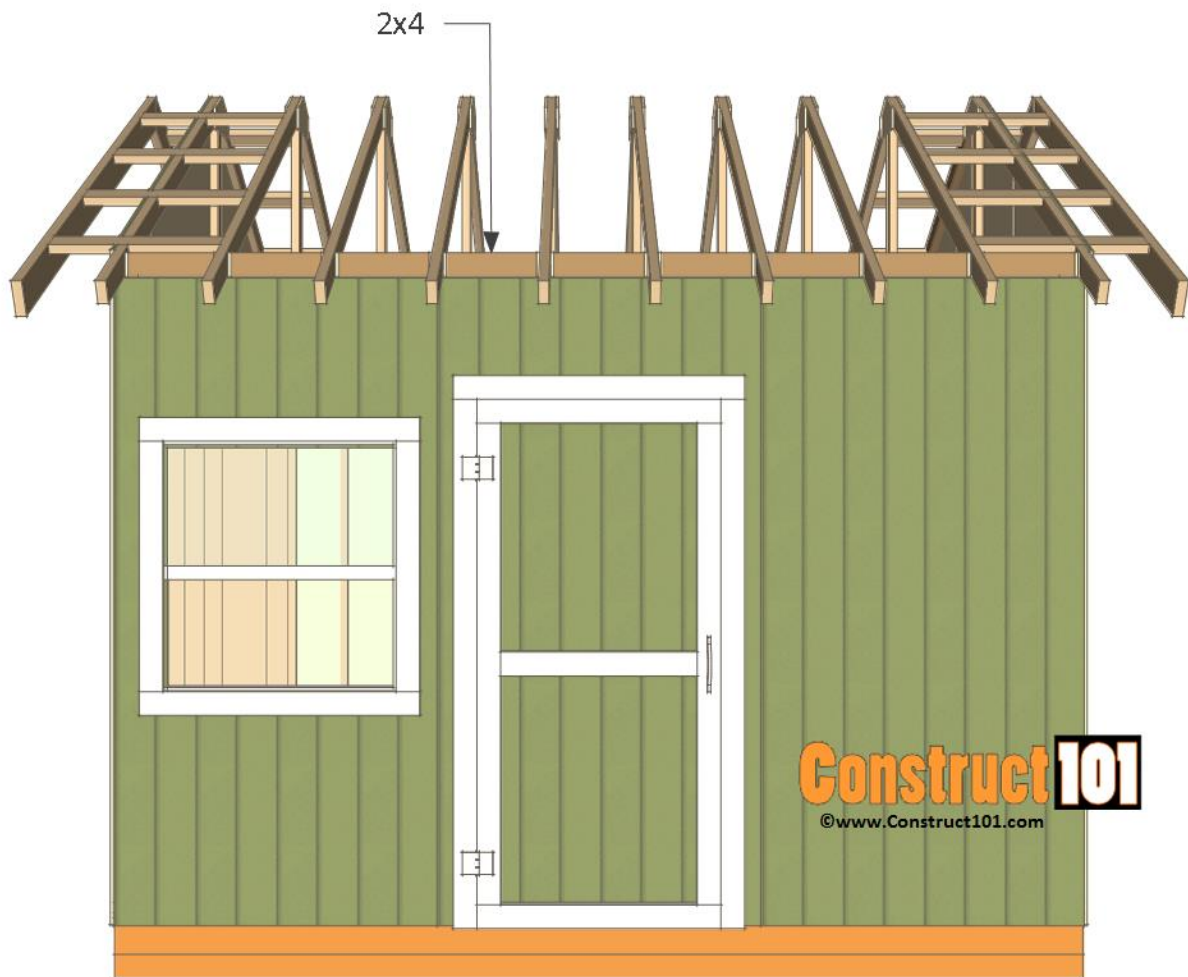
Attach the truss to the shed 16" O.C. Toenail 3 1/2" nails through the truss and into the wall frame.

To build the 1' overhand cut 2x4's to 2' 1 3/4" long for the outriggers. Notch as shown on illustration above and install the outriggers using 3 1/2" nails.

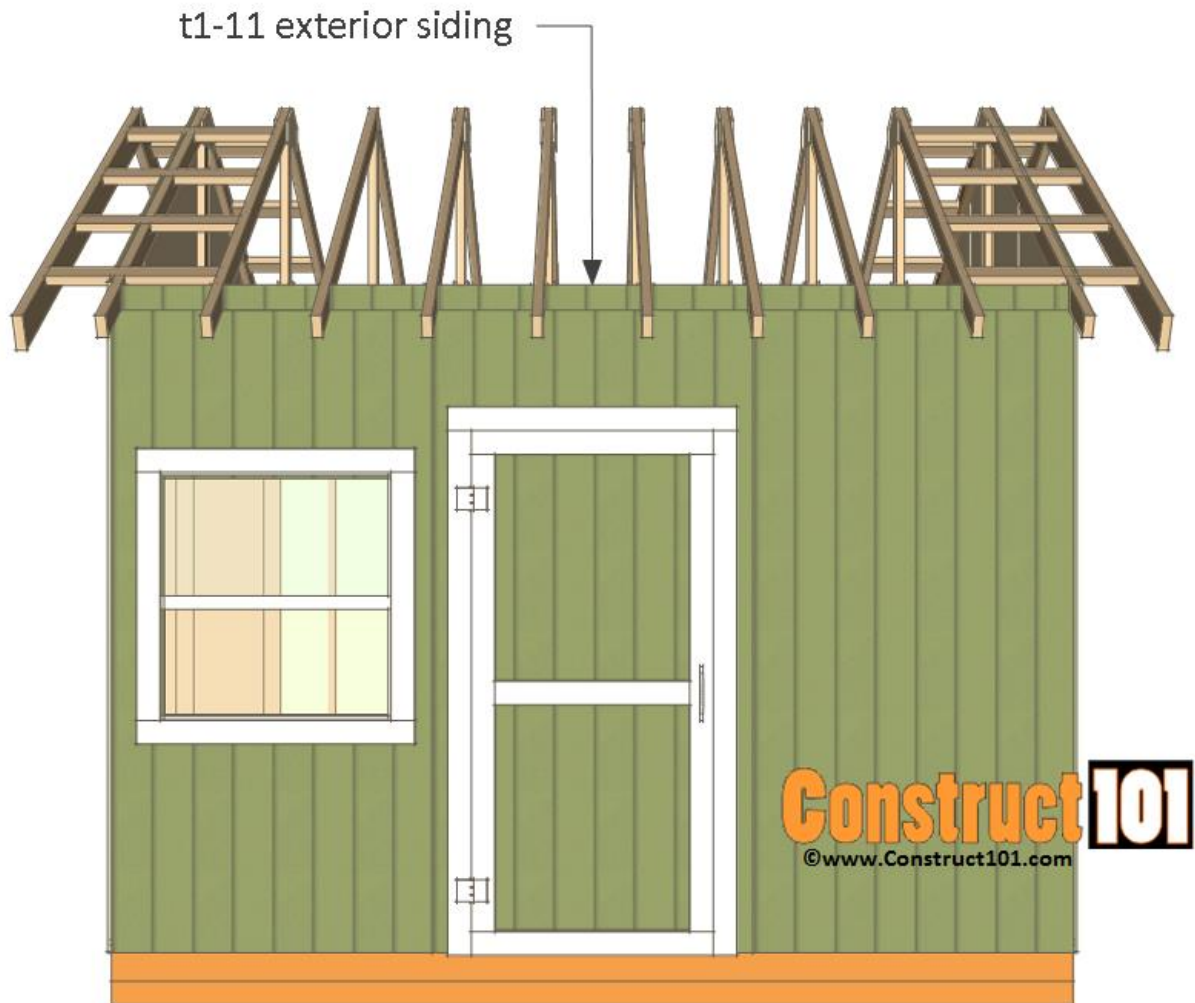
Once the outriggers have been installed cut to size the 2x6 roof trim as shown above and install with 3 1/2" nails.

Install siding using 1 1/4" finishing nails.

Install doors, and windows.



Cut 2x4's to size and install between the rafters with 3 1/2" nails.



Cut t1-11 siding to size and install between the rafters. Use 1 1/4" finishing nails to install.



Measure, cut, and install the 1/2" plywood for the roof deck.



Install roofing felt, drip edge, and shingles.

Install 1×4 trim.