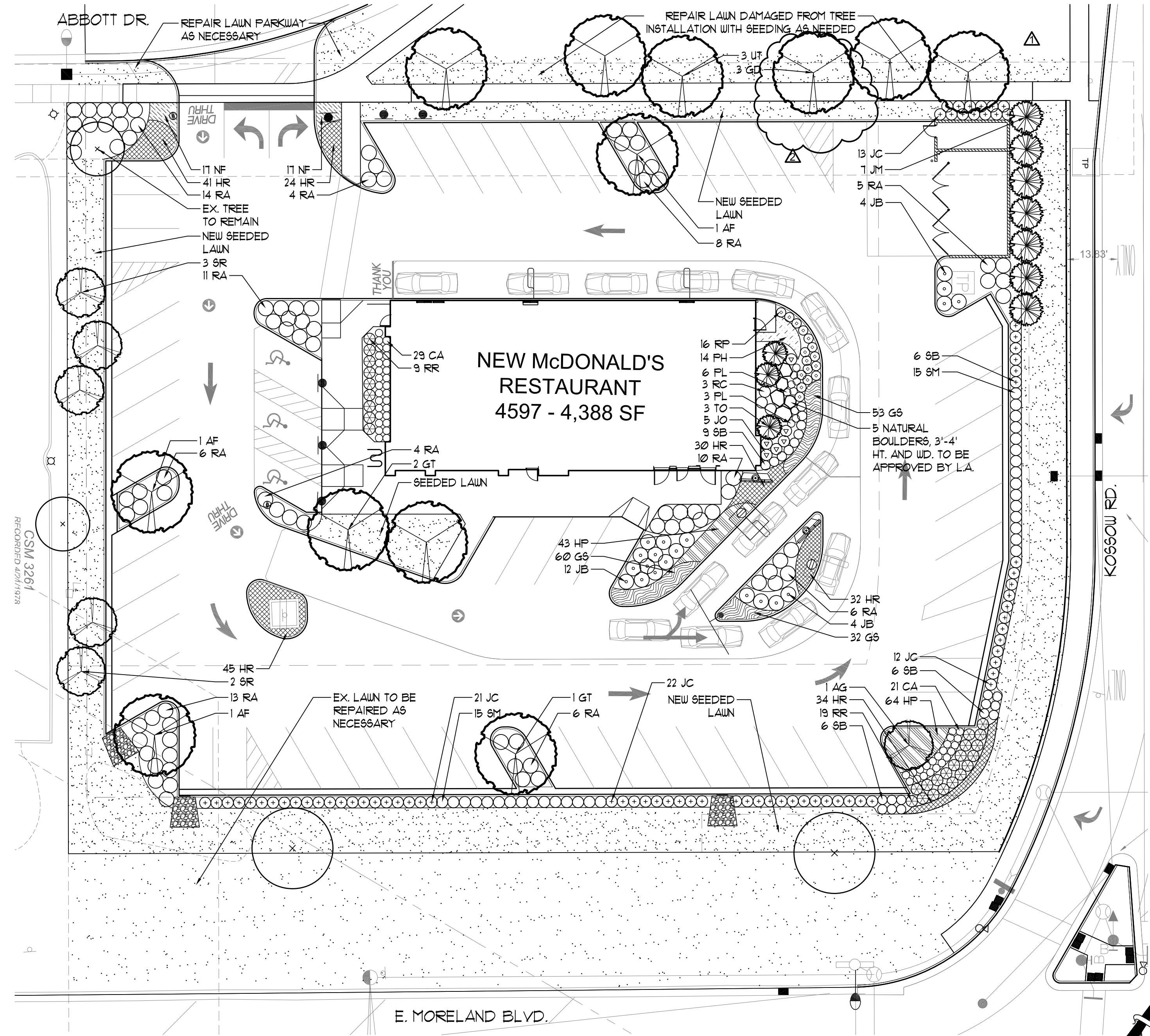


**1 TREE PRESERVATION / DEMOLITION**  
SCALE: 1"=30'-0"



**2 LANDSCAPE PLAN**  
SCALE: 1"=20'-0"

**GENERAL NOTES**

- ALL DIMENSIONS ARE TO BE VERIFIED IN THE FIELD BY THE CONTRACTOR. NOTIFY THE LANDSCAPE ARCHITECT OF ANY DISCREPANCIES PRIOR TO STARTING WORK.
- THE CONTRACTOR SHALL HAVE A MINIMUM OF FIVE YEARS EXPERIENCE WITH PROJECTS OF SIMILAR SIZE AND TYPE.
- SPECIES AND SIZES OF PLANTS LISTED IN THE PLANT LIST ARE SUBJECT TO AVAILABILITY AT TIME OF INSTALLATION. IF SUBSTITUTIONS ARE REQUIRED, THE CONTRACTOR SHALL SUBMIT REQUESTS TO THE LANDSCAPE ARCHITECT FOR APPROVAL.
- QUANTITIES SHOWN ON THE DRAWING AND IN THE PLANT LIST ARE PROVIDED ONLY FOR THE CONTRACTOR'S CONVENIENCE. THE NUMBER OF PLANT SYMBOLS SHOWN ON THE DRAWINGS SUPERCEDE ALL QUANTITIES PROVIDED. THE CONTRACTOR SHALL VERIFY ALL PLANT QUANTITIES ON THE DRAWINGS AND NOTIFY THE LANDSCAPE ARCHITECT OF ANY DISCREPANCIES PRIOR TO INSTALLATION. THE CONTRACTOR IS RESPONSIBLE FOR INSTALLING ALL PLANTS PER THE PLANT SYMBOLS SHOWN ON THE DRAWINGS.
- ALL OVERHEAD AND UNDERGROUND UTILITIES ARE TO BE LOCATED PRIOR TO DIGGING OR EXCAVATION. IF UTILITIES OR OTHER OBSTRUCTIONS ARE DISCOVERED TO CONFLICT WITH GRADING, PLANT OR MATERIALS PLACEMENT, NOTIFY THE LANDSCAPE ARCHITECT SO THAT ADJUSTMENTS MAY BE MADE PRIOR TO PROCEEDING.
- CONTRACTOR SHALL TAKE ALL PRECAUTIONS TO PROTECT EXISTING PLANTS, LAWN AREA, SITE FEATURES AND PAVING TO REMAIN. ANY DAMAGE TO THESE EXISTING AREAS OR FEATURES SHALL BE REPLACED BY THE CONTRACTOR AT THEIR EXPENSE. DAMAGED LAWN AREAS SHALL BE FILLED, RE-GRADED, TOPSOIL ADDED AS NEEDED AND BE RESTORED WITH SOD. REPLACED FEATURES, PLANTS AND SOD SHALL BE WARRANTED BY THE CONTRACTOR FOR A PERIOD OF ONE YEAR.
- PROVIDE POSITIVE DRAINAGE AT ALL TIMES. DO NOT OBSTRUCT THE NATURAL OR ENGINEERED DRAINAGE FLOW PATTERN. NOTIFY THE LANDSCAPE ARCHITECT OF ANY DRAINAGE CONCERNS.
- IMPORTED TOPSOIL FOR THIS PROJECT SHALL BE FRIABLE LOAM OR SANDY LOAM, COMPRISED OF BETWEEN 20% AND 50% SILT, 10% AND 25% CLAY, AND 30% AND 60% SAND. THE PH LEVEL SHALL BE BETWEEN 6.0 AND 7.2 AND THE ORGANIC MATTER CONTENT SHALL BE BETWEEN 3% AND 6%. TOPSOIL SHALL BE FREE OF SEEDS, STONES, LARGE CLUMPS, ROOTS, LEAVES AND DEBRIS, AND SHALL NOT BE DELIVERED WHILE IN A FROZEN OR MUDDY CONDITION. CONTRACTOR SHALL PROVIDE A RECENT SOIL TEST ANALYSIS FOR ALL SOIL TO BE USED. THE ANALYSIS MUST INCLUDE THE INFORMATION REQUIRED ABOVE. IF TESTED TOPSOIL REQUIRES AMENDMENTS TO COMPLY WITH REQUIREMENTS, CONTRACTOR SHALL AMEND THE TOPSOIL, RE-TEST AND RESUBMIT THE ANALYSIS FOR APPROVAL PRIOR TO BRINGING THE TOPSOIL ON SITE.
- EXISTING TOPSOIL FROM ON SITE THAT HAS BEEN STOCKPILED MAY BE USED IF IT MEETS THE REQUIREMENTS FOR IMPORTED TOPSOIL. THIS INCLUDES CONDUCTING SOIL TEST ANALYSIS AND ADDING AMENDMENTS AS NEEDED SO THAT THE SOIL COMPLIES WITH THE REQUIREMENTS.
- LAWN SEED SHALL BE A TALL FESCUE BLEND SOD, SUCH AS DRYSPRELL TALL FESCUE BLEND, AVAILABLE FROM NATIONAL SEED. SEEDING SHALL ONLY BE INSTALLED WITHIN THE FOLLOWING DATES UNLESS APPROVED BY THE LANDSCAPE ARCHITECT:  
MAY 1 THROUGH JUN 15  
AUG 15 THROUGH OCT 15
- ALL PLANT MATERIAL MUST BE SPECIMEN QUALITY, TRUE TO SPECIES AND VARIETY, WITH FULL, DENSE AND HEALTHY FORMS. PLANTS THAT ARE NOT SPECIMEN QUALITY WILL NOT BE ACCEPTED. ALL PLANTS MUST HAVE BEEN LOCALLY GROWN AT A STATE INSPECTED AND CERTIFIED NURSERY, LOCATED WITHIN 50 MILES OF THE PROJECT SITE.
- ALL DECIDUOUS AND EVERGREEN TREES AND SHRUBS THAT ARE 36" HEIGHT OR TALLER ARE TO HAVE FRESHLY DUG, BALLED AND BURLAPPED ROOT BALLS WITH SIZES THAT MEET THE STANDARDS OF THE AMERICAN NURSERYMEN'S ASSOCIATION. DECIDUOUS AND EVERGREEN SHRUBS THAT ARE 30" HEIGHT OR LESS MAY EITHER HAVE FRESHLY DUG, BALLED AND BURLAPPED ROOT BALLS OR MAY BE CONTAINER GROWN. ALL PERENNIALS, ORNAMENTAL GRASSES AND GROUNDCOVER MUST BE CONTAINER GROWN. CONTAINER GROWN MATERIALS SHALL HAVE BEEN GROWN IN THEIR CURRENT CONTAINER FOR A PERIOD OF NO LESS THAN SIX MONTHS.
- ALL TREES SHALL BE INSPECTED BY THE LANDSCAPE ARCHITECT, AT THE NURSERY, PRIOR TO DIGGING. TREES THAT ARE ACCEPTABLE WILL BE SEALED. ALL SEALS APPLIED BY THE LANDSCAPE ARCHITECT MUST REMAIN ON THE TREES AND ARE NOT TO BE REMOVED BY THE CONTRACTOR. ALL TREES MUST HAVE SEALS IN PLACE AT TIME OF ACCEPTANCE OR WILL BE AUTOMATICALLY REJECTED. HEELED-IN TREES WILL NOT BE ACCEPTED WITHOUT PRIOR APPROVAL FROM THE LANDSCAPE ARCHITECT.
- ALL SHRUBS 36" HEIGHT OR TALLER ARE TO BE APPROVED BY THE LANDSCAPE ARCHITECT PRIOR TO INSTALLATION. AN EXAMPLE SHRUB MAY BE TAGGED OR PICTURES MAY BE SUBMITTED FOR APPROVAL. ALL SHRUBS THAT DO NOT MATCH THE APPROVED EXAMPLE SHRUB IN SIZE AND FORM, WILL BE REJECTED. ALL OTHER SHRUBS MUST MEET THE MINIMUM SIZES GIVEN IN THE PLANT LIST AND BE SPECIMEN QUALITY. SHRUBS THAT DO NOT MEET THESE GUIDELINES WILL BE REJECTED.
- PLANT MATERIAL SHALL ONLY BE INSTALLED WITHIN THE FOLLOWING DATES:  
DECIDUOUS TREES AND SHRUBS: APR 1 THROUGH NOV 15  
SPRING DIG DECIDUOUS TREES: APR 1 THROUGH OCT 15  
EVERGREEN TREES AND SHRUBS: APR 1 THROUGH NOV 1  
PERENNIALS AND GROUNDCOVERS: MAY 1 THROUGH OCT 15
- TEST TREE PITS AND PLANT BEDS FOR ADEQUATE DRAINAGE. FILL PLANT PIT WITH 12" OF WATER. IF WATER LEVEL DOES NOT DROP A MINIMUM OF ONE INCH PER HOUR, NOTIFY THE LANDSCAPE ARCHITECT OF DRAINAGE ISSUES.
- PLANTING MIX FOR ALL PLANTINGS SHALL BE AS FOLLOWS. MIXING OF PLANTING MIX COMPONENTS SHALL BE THOROUGHLY BLENDED OUTSIDE THE PLANTING PITS, PRIOR TO PLANTING.  
TREES AND SHRUBS: 80% TOPSOIL, 10% SAND, 10% PINE FINES  
PERENNIALS AND ANNUALS: 10% TOPSOIL, 15% SAND, 15% PINE FINES
- FOR PLANTING MIXES, SAND SHALL BE ANGULAR, COARSE SAND AND PINE FINES SHALL BE 3/8" SOUTHERN PINE BARK FINES.
- EXCAVATE PARKING LOT ISLANDS AND CURBED PLANTERS TO A DEPTH OF 18" AND BACKFILL WITH TOPSOIL. BERM PLANTERS AND ISLANDS TO A HEIGHT OF 6" ABOVE TOP OF CURB.
- ALL PLANT BEDS ARE TO BE WELL SHAPED 'SPADE CUT' EDGES, 3" DEPTH, IN LINES OR IN CURVES AS SHOWN ON THE DRAWINGS.
- THE CONTRACTOR SHALL REQUEST AN INSPECTION OF LANDSCAPE PLANTING UPON SUBSTANTIAL COMPLETION FOR "ACCEPTANCE". REQUEST MUST BE SUBMITTED TO LANDSCAPE ARCHITECT AT LEAST TEN DAYS PRIOR TO ANTICIPATED INSPECTION. UPON INSPECTION THE LANDSCAPE ARCHITECT SHALL PREPARE A PUNCH LIST OF UNACCEPTABLE OR OUTSTANDING ITEMS. AFTER THE ITEMS HAVE BEEN SATISFACTORILY COMPLETED AND REVIEWED, THE LANDSCAPE ARCHITECT WILL RECOMMEND "ACCEPTANCE".
- ALL PLANT MATERIAL SHALL BE GUARANTEED FOR A PERIOD OF ONE YEAR FROM DATE OF "ACCEPTANCE". AT OR NEAR THE END OF THE GUARANTEE PERIOD, THE CONTRACTOR SHALL REQUEST AN INSPECTION OF LANDSCAPE PLANTING FOR "FINAL ACCEPTANCE". REQUEST MUST BE SUBMITTED TO LANDSCAPE ARCHITECT AT LEAST TEN DAYS PRIOR TO ANTICIPATED INSPECTION. UPON INSPECTION THE LANDSCAPE ARCHITECT SHALL PREPARE A PUNCH LIST OF UNACCEPTABLE ITEMS. AFTER THE ITEMS HAVE BEEN SATISFACTORILY REPLACED OR REPAIRED, REVIEWED AND APPROVED, THE LANDSCAPE ARCHITECT WILL RECOMMEND "FINAL ACCEPTANCE".

**PLANT LIST**

CODE	BOTANICAL NAME	COMMON NAME	SIZE	ROOT	TOTAL	ADDITIONAL NOTES
<b>DECIDUOUS TREES</b>						
AF	ACER x FREEMANII 'AUTUMN BLAZE'	AUTUMN BLAZE MAPLE	25" CALIPER	B 4 B	3	BRANCHED UP 5'
AG	ANELANCHIER x G. 'AUTUMN BRILLIANCE'	APPLE SERV/CEBERRY	6' HEIGHT	B 4 B	1	CLUMP FORM
GD	GYNOCALADUS DIOICIS	KENTUCKY COFFEETREE	25" CALIPER	B 4 B	3	BRANCHED UP 5'
GT	GLEDITSIA T. VAR. INERMIS 'SKYLINE'	SKYLINE HONEYLOCUST	25" CALIPER	B 4 B	3	BRANCHED UP 5'
SR	SYRINGA RETICULATA	JAPANESE TREE LILAC	6' HEIGHT	B 4 B	5	CLUMP FORM
UT	ULMUS TRIUMPH 'MORTON GLOSSY'	TRIUMPH ELM	25" CALIPER	B 4 B	3	BRANCHED UP 5'
<b>EVERGREEN TREES</b>						
JM	JUNIPERUS CHINENSIS 'MOUNTBATTEN'	MOUNTBATTEN JUNIFER	6' HEIGHT	B 4 B	7	
TO	THUJA OCCIDENTALIS 'TECHNY'	TECHNY ARBORVITAE	6' HEIGHT	B 4 B	3	
<b>DECIDUOUS SHRUBS</b>						
RA	RHUS AROMATICA 'GRO-LOW'	GRO-LOW SUMAC	3 GALLON	CONTAINER	81	
RC	RIBES ALPINUM	ALPINE CURRANT	24" HT 4 8PD	CONTAINER	3	
RR	ROSA 'RADRAZZ'	KNOCKOUT ROSE	5 GALLON	CONTAINER	28	
RP	ROSA PINK DRIFT 'MELOCOS'	PINK DRIFT GROUNDCOVER ROSE	3 GALLON	CONTAINER	16	
SB	SPIRAEA BETULIFOLIA 'TOR'	TOR BIRCHLEAF SPIREA	5 GALLON	CONTAINER	46	
SM	SYRINGA MEYERI 'PALIBIN'	DWARF KOREAN LILAC	24" HT 4 8PD	B 4 B	30	
<b>EVERGREEN SHRUBS</b>						
JC	JUNIPERUS CHINENSIS 'SEA GREEN'	SEA GREEN JUNIFER	3 GALLON	CONTAINER	72	
JB	JUNIPERUS SABINA 'BUFFALO'	BUFFALO JUNIFER	3 GALLON	CONTAINER	20	
JO	JUNIPERUS CHINENSIS 'OLD GOLD'	OLD GOLD JUNIFER	18" HT 4 8PD	CONTAINER	6	
<b>PERENNIALS, ORNAMENTAL GRASSES AND GROUNDCOVERS</b>						
CA	CALAMAGROSTIS A. 'KARL FOERSTER'	FEATHER REED GRASS	1 GALLON	CONTAINER	50	SPACED 18" O.C.
GS	GERANIUM 'ROZANNE'	ROZANNE GERANIUM	1 GALLON	CONTAINER	145	SPACED 15" O.C.
HP	HEUCHERA 'PURPLE PETTICOATS'	PURPLE PETTICOATS CORAL BELLS	1 GALLON	CONTAINER	101	SPACED 18" O.C.
HR	HEMEROCALLIS 'LITTLE WINE CUP'	LITTLE WINE CUP DAYLILY	1 GALLON	CONTAINER	103	SPACED 18" O.C.
HE	HEMEROCALLIS 'HAPPY RETURNS'	HAPPY RETURNS DAYLILY	1 GALLON	CONTAINER	103	EVENLY MIXED
NF	NEPETA x FAASSENII	FAASSEN'S CATMINT	1 GALLON	CONTAINER	34	SPACED 18" O.C.
PH	PENNINGTONI ALOPECUROIDES 'HAMELN'	DWARF FOUNTAIN GRASS	1 GALLON	CONTAINER	14	SPACED 24" O.C.
PL	PEROVSKIA 'LITTLE SPIRE'	LITTLE SPIRE RUSSIAN SAGE	1 GALLON	CONTAINER	9	SPACED AS SHOWN

PREPARED BY: V3 Companies  
7325 Janes Avenue  
Woodridge, IL 60517  
630.724.9200 phone  
630.724.9202 fax  
www.v3co.com

**McDonald's USA, LLC**

These drawings and specifications are the confidential and proprietary property of McDonald's USA, LLC and shall not be copied or reproduced without the written consent of McDonald's USA, LLC. The contract for use on this specific site in conjunction with its issue date and are not suitable for use on a different site or at a later date. Use of the drawings and specifications on any other project without the services of properly licensed architects and engineers. Reproduction of the contract documents for reuse on another project is not authorized.

DRAWN BY: MMB  
STD ISSUE DATE: 7/19/17  
REVIEWED BY: VWS  
DATE ISSUED: 7/19/17

TITLE: LANDSCAPE PLAN  
DESCRIPTION: MCDONALD'S - WAUKESHA, WI  
SITE ADDRESS: 2340 E. MORELAND BLVD., WAUKESHA, WI  
SITE ID: 048-0107

REVISIONS:

NO.	DATE	DESCRIPTION
1	3/10/17	CITY COMMENT REVISIONS
2	2/29/17	CITY COMMENT REVISIONS

BY: MMB

06240.31A - LANDSCAPE PLAN

2017-02-23\_L1-2.DWG - 2/24/2017 9:54 AM