

A vibrant night scene of a street festival. Large, glowing spherical lights hang from strings across the street, illuminating a crowd of people walking and socializing. In the background, there are trees and buildings, including one with a sign that says "PEOPLE'S PARK". The overall atmosphere is festive and lively.

WAUKESHA CHRISTMAS PARADE MEMORIAL

TEN X TEN

26th Avenue North Overlook
Minneapolis, MN

CONTENTS

COVER LETTER	5
FIRM INFO + APPROACH	6
NARRATIVE + DESIGN	14
EXPERIENCE	32
TIMELINE	54
FEE + TASKS	58



Jennifer Andrews
City of Waukesha
201 Delafield Street
Waukesha, WI 53188

July 8, 2022

Dear Jennifer,

It is with great pleasure that we submit to you our response to the Request for Proposals for the Waukesha Parade Memorial. The Parade Commission's vision for this project is deeply rooted in honoring the community and celebrating the lives of those who were injured and lost in this tragic event. We believe there is amazing potential for the transformation of Grede Park and Main Street into an extraordinary place of remembrance, layered with meaning and deep community connection. Successful places of memorial, remembrance and healing come from a collaborative process – city leadership working alongside communities that are ready to heal and tell their stories. Our TEN x TEN team has deep ties to and is invested in Waukesha, and are committed to working with the city on a project that can contribute to a more inspired and just future.

It was an honor to receive the invitation to submit for the Parade Memorial after having personally tracked the formation of the commission and dialogue about creating a permanent space for remembrance. This memorial will reach beyond Waukesha and offer meaning to people like me who -born and raised in southwest Waukesha- attended South High, numerous 4th of July and Christmas parades, frequented downtown with friends, and explored the Fox never imagining that something that this could happen where I lived. I was devastated when I got the news of the Christmas Parade and felt called in some way to participate in this process. Not only am I personally invested in the Waukesha community, our firm is committed to working on projects where we feel a deep connection.

There are unique opportunities and challenges embedded in your vision and our team is well-suited to lead you through this process of transformation. Working on complex memorial, community, and public projects demands a balance of design innovation, local knowledge, interpretation, public engagement, and leadership. I, alongside my team at TEN x TEN, will a serve as the design Principal guiding the vision, design, and implementation for physical improvements at the Parade Memorial. We have based our scope of work on the tasks and processes we think the project requires and are leveraging our experience from numerous previous projects to inform this process. The fee we have outlined is based on a percentage of implementation costs for the memorial and as you will see in the response, we propose to start with a Concept Alignment Phase to finalize the scope together with the commission. After the final scope and design is determined, a civil engineer, structural engineer, lighting designer, and cost estimator will be added to your team to holistically document and implement the project.

We are excited for the opportunity to ensure that the Parade Memorial project connects deeply to the surrounding community, to Waukesha County, and beyond. To ensure that this project is a catalyst for healing and connection, careful thought should be given to how you engage with your community,, building on your current connections and the momentum of the commission. Our collective work facilitating open and meaningful dialogue between residents, organizations, city decision-makers, and outside stakeholders is a critical asset to our collaboration. Our memorial work on the Philando Castile Peace Garden, Rondo Commemorative Plaza, UNC Charlotte Memorial, and Louise B. Miller Memorial at Gallaudet University, have laid a foundation for our approach to Memorial Landscapes. Our methods are grounded in shared knowledge, trust, and collaborative action. Our expertise has developed through a depth of experience working with these institutions and communities across the country and witnessing how social networks and cultural agency play a critical role in developing places that thrive and are beloved.

We appreciate your consideration of our qualifications and look forward to the opportunity to present our team to you. Please direct any questions regarding these materials to Ross Altheimer at the phone number or email listed below.

Respectfully,

Ross Altheimer, PLA, ASLA, FAAR
Principal + Co-Founder, TEN x TEN Landscape + Urbanism
612.440.8369 | ross@tenxtenstudio.com

Louise B. Miller Memorial Garden
Washington, D.C.

FIRM INFO + APPROACH

WHO WE ARE



Founded in 2015, TEN x TEN is a transdisciplinary landscape architecture and urban design practice grounded by a shared curiosity and passion for experimentation and agency. We collaborate with visionary clients and teams to co-create immersive, resilient landscapes that adapt to social, economic and environmental transformation.

Capitalizing on creative alliances between fields, we operate comfortably within a shifting set of disciplinary boundaries. We listen, communicate and trust, cultivating a design process full of community and laughter.

Our work pays careful attention to craft, beauty and temporality inherent in any landscape. Merging art and science, our process challenges norms of the landscape architecture profession. We ask: What do we see? How can we document, investigate and experiment to build relationships and deepen our ways of knowing? How can we apply various modes of seeing and making to discover the magic latent in a site? Our studies document change: mold, decay, growth, competition, failure and resilience. We explore spaces, materials and ecologies at all scales, and elevate the everyday human experience through a deep respect for the authenticity of people, culture and ecology.



Tri-Faith Commons
Omaha, NE



Residuals Exhibition
Minneapolis, MN

OUR MEMORIAL APPROACH

Our work lies in unearthing memories and stories; in honoring, listening, and shaping how a space commemorates life, comprehends trauma, and responds to the pain of others. Our work is guided by bearing witness to this pain and grounding our design process with patience and humility. We attempt to question, frame, test, and illuminate stories through materials, through how the body moves, rests, and interacts with other bodies in space, through planting, through language and art. We also directly engage with the communities affected who will use and care for these spaces as a central part of our process.

A memorial has the power to not only honor individuals, victims, survivors, and events, but to define the story that is told and the experience people will have with those memories and with each other. We believe that this memorial can simultaneously hold space for tragedy and hope, reflection and engagement, pain and healing. Our team is motivated by the desire to create a memorial that honors the lives of Tamara, Jane, Wilhelm, Leanna, Virginia, and Jackson, and acknowledges the enormous tragedy that occurred, while creating space for optimism and a hopeful vision for a better future.

ROSS ALTHEIMER, PLA, FAAR

Principal + Co-Founder



A graduate of Waukesha South High School, Ross was born and raised in Waukesha near the Fox River. He has led the visioning and execution of significant cultural, community and memorial projects across the United States. His work explores the art and temporality of landscape with the goal of building strong communities and institutions through leveraging landscape’s capacity for transformation. Some of his projects include the Tri-Faith Commons in Omaha, the U.S. Capitol Grounds Master Plan in Washington D.C., and the Minnesota Military Family Tribute on the St. Paul Capitol Grounds in Minnesota. Ross teaches across disciplines of Architecture and Landscape Architecture as adjunct faculty at the University of Minnesota College of Design where he was a 2014-2015 Cleveland Fellow.

Ross has a BS in Architectural Studies from the University of Wisconsin-Milwaukee and a MARCH + MLA from the University of Virginia where he won the Nix Fellowship to study subterranean Paris. Prior to TEN x TEN, he was the Director of Landscape Architecture at HGA and an Associate at Coen+Partners. His work has won awards and recognition from ASLA National, ASLA Minnesota, GSA Design Awards, and the Graham Foundation. He was also the 2012-2013 Rome Prize Fellow in Landscape Architecture at the American Academy in Rome.

Education

University of Virginia School of Architecture, Charlottesville, VA
Master of Architecture, Master of Landscape Architecture, 2004

University of Wisconsin-Milwaukee School of Architecture & Urban Planning, Milwaukee, WI
Bachelor of Science in Architecture, 1999

Ecole Speciale d' Architecture
Paris, France, 1998

Professional

Registered Landscape Architect - Wisconsin, Minnesota, Illinois, Virginia

American Society of Landscape Architects - Full Member, ASLA Minnesota Chapter President

American Institute of Architects - Associate Member

LEED Accredited Professional

Select Project Experience

Lakewood Cemetery Welcome Precinct Minneapolis, MN

University of North Carolina Charlotte Remembrance Memorial Charlotte, NC

Louise B. Miller Memorial Garden at Gallaudet University Washington, D.C.

Philando Castile Peace Garden Falcon Heights, MN

Historic Fort Snelling at Bdote Revitalization Minneapolis, MN

Indian Mounds Regional Park Cultural Landscape Study + Messaging Plan
St. Paul, MN
2021 ASLA National Honor Award for Analysis and Planning

26th Avenue North Overlook Minneapolis, MN

Tri-Faith Commons Omaha, NE
2021 ASLA Minnesota Merit Award for General Design, 2020 Faith + Form Religious Architecture + Art Award for Sacred Landscape

Rondo Commemorative Plaza St. Paul, MN
2020 ASLA Minnesota Honor Award, 2020 ASLA Minnesota People’s Choice

Horseshoe Bay Farms Vision + Implementation Plan Egg Harbor, WI
2022 ASLA Minnesota Merit Award for Planning + Urban Design, 2022 ASLA Wisconsin Honor Award for Communication

White Sand Retreat Lac du Flambeau, WI
2022 ASLA MN Honor Award

Minnesota Military Family Tribute St. Paul, MN*

**Designates work completed with HGA*

EGLÉ VANAGAITE

Senior Associate



Eglė is a Senior Associate at TEN x TEN. She has over ten years of experience in the field of Landscape Architecture and has worked on international, regional and local award winning projects spanning diverse range of scale, complexity and types. Influenced by the northern Baltic Sea region where she grew up, her admiration for ephemeral, resilient and native ecologies continue to shape her work. She enjoys the collaborative design process and how it kindles conversations, creates connections, and evolves into physically constructed objects and spaces.

With a background in visual arts, environmental design, and landscape architecture her path has been guided through the intersection of community, culture, and design. Her work is focused in engaging communities as an integral member of multi-disciplinary project teams. Eglė enjoys collaboration and is interested in how the collaborative process and collective approach can guide the design towards a shared vision.

Eglė maintains an Adjunct Professor role at the University of Minnesota College of Design where she teaches design studio and graphic representation courses.

Education

University of Minnesota College of Design, Minneapolis, MN
Master of Landscape Architecture

University of Minnesota, Minneapolis, MN
Bachelor of Arts in Environmental Design

Academic

University of Minnesota College of Design, Minneapolis, MN
Adjunct Assistant Professor

Select Project Experience

Lakewood Cemetery Welcome Precinct Minneapolis, MN

Commutator Foundry Project Minneapolis, MN

Minnesota Zoo Treetop Trail Apple Valley, MN

Luther Seminary Campus of the Future St. Paul, MN

Herbst Food Market St. Paul, MN

Crystal Bridges Museum Expansion Bentonville, AR*

Motley Master Plan Minneapolis, MN*

Peavey Plaza Revitalization Minneapolis, MN*

North Minneapolis Greenway Minneapolis, MN*

Washburn Fair Oaks Park Master Plan Minneapolis, MN*

South Loop District Master Plan Bloomington, MN*

Shingle Creek Parkway Brooklyn Park, MN*

Plymouth Fairway Greens Park Master Plan Plymouth, MN*

**Designates work completed with Coen + Partners, SRF Consulting, or Damon Farber Landscape Architects*



KATIE KELLY

Associate

Katie is a landscape designer and Associate at TEN x TEN. Driven to make with purpose and with others, she most values work that is cross-disciplinary, collaborative, and inclusive. She is interested in the capacity for landscapes to communicate stories and experiences, and in the opportunities landscapes present to connect, teach, and heal. At TEN x TEN she has led a variety of memorial and interpretive planning projects including the Memorial at UNC Charlotte honoring the students killed in a 2019 school shooting and the Louise B. Miller Pathways and Gardens honoring Louise’s legal battle for education freedom. She also led the Indian Mounds Interpretive Plan which received a 2021 National ASLA award in Planning.

Prior to TEN x TEN, Katie was a landscape designer at Wolf | Josey Landscape Architects in Charlottesville, VA where she helped realize a number of institutional and residential projects in Virginia and the Mid-Atlantic. Katie holds a BS in Interior Architecture from Cornell University and an MLA from the University of Virginia, where she co-founded UVA’s first equity in design group, manifestA, and was a University Olmsted Scholar and recipient of the Student ASLA Honor Award in Collaboration.

Education

University of Virginia School of Architecture, Charlottesville, VA
Master of Landscape Architecture, 2019

Cornell University, College of Human Ecology, Ithaca, NY
Bachelor of Science in Interior Design, 2013

Honors + Awards

2021 ASLA Honor Award
Indian Mounds Interpretive Plan

2019 ASLA Student Merit Award

2019 Landscape Architecture
Foundation Olmsted Scholar

2018-2019 Dean’s Honor Fellow,
University of Virginia

2018 Azure Magazine A+ Student
Award Finalist

2016 ASLA Honor Award, Research
Category
Chatham Hall Framework Plan

Select Project Experience

University of North Carolina Charlotte Remembrance Memorial Charlotte, NC

Louise B. Miller Memorial Garden at Gallaudet University Washington, D.C.

Historic Fort Snelling at Bdote Revitalization Minneapolis, MN

Indian Mounds Regional Park Cultural Landscape Study + Messaging Plan
St. Paul, MN
2021 ASLA National Honor Award for Analysis and Planning

Horseshoe Bay Farms Vision + Implementation Plan Egg Harbor, WI
2022 ASLA Minnesota Merit Award for Planning + Urban Design, 2022 ASLA Wisconsin Honor Award for Communication

Juxtaposition Arts Campus Minneapolis, MN

Kol Rinah Synagogue St. Louis, MO

Minneapolis Federal Plaza Feasibility Study Minneapolis, MN

Hamtramck Recreational District Comprehensive Plan Hamtramck, MI

The Ellen DeGeneres Campus for The Dian Fossey Gorilla Fund Kinigi, Rwanda

SECOND + SECOND Courtyard Minneapolis, MN
2021 Minneapolis Preservation Award for New Construction, 2021 ASLA Minnesota Merit Award for General Design

Cedar Lake/Lake of the Isles Master Plan Minneapolis, MN

YOU (Youth Opportunity Union) Community Center Dutchess County, NY



University of North Carolina
Remembrance Memorial
Charlotte, NC

Lakewood Cemetery
Welcome Center
Minneapolis, MN

An architectural rendering of the Lakewood Cemetery Welcome Center at dusk. The building is a two-story structure with a light-colored stone or concrete facade and large windows that are illuminated from within. It is surrounded by a lush landscape with various trees, including a large, mature tree in the foreground on the right. A paved path leads through a garden area with purple and white flowers towards the building. In the foreground, three people are walking along the path: a woman in a red shirt and blue jeans, a man in a black shirt and cap holding a map, and another man in a light blue shirt with a backpack. A blurred car is visible on a road in the background. The sky is a mix of purple and blue, suggesting twilight.

NARRATIVE + DESIGN



A MEMORIAL THAT RECLAIMS THE STREET AND MAKES THE COMMUNITY FEEL SAFE

Through this memorial we wish to transform the street into a space people can walk without fear and with dignity, by creating streets that feel welcoming and safe to pedestrians on a daily basis as well as during annual events and parades. Giving power to the pedestrian is an important symbol of resilience of the Waukesha community and a message that we will “keep marching”. As the site of immense trauma, **The Confluence** at the Five Points of Main St. is a space for gathering, honoring, celebration, and movement. Safe, vibrant pedestrian crossings along this procession are an active celebration of those who lost their lives and the people who continue to live here.



A MEMORIAL THAT STRENGTHENS, UNIFIES, AND CELEBRATES THE WAUKESHA COMMUNITY

The strength and resilience of the Waukesha Strong community is a critical asset to the development and longevity of the memorial spaces we are proposing for Downtown Waukesha. A memorial that builds community rather than divides it is essential. This can be accomplished by creating space to gather, mourn, celebrate, interact, and heal together. We also recognize the importance of symbols—like Unite with a Blue Light and #WaukeshaStrong—to build strength within the community. We see the W. Broadway Bridge adjacent to Grede Park as **The Gateway** into Downtown Waukesha and an opportunity to share a message of strength and unity.

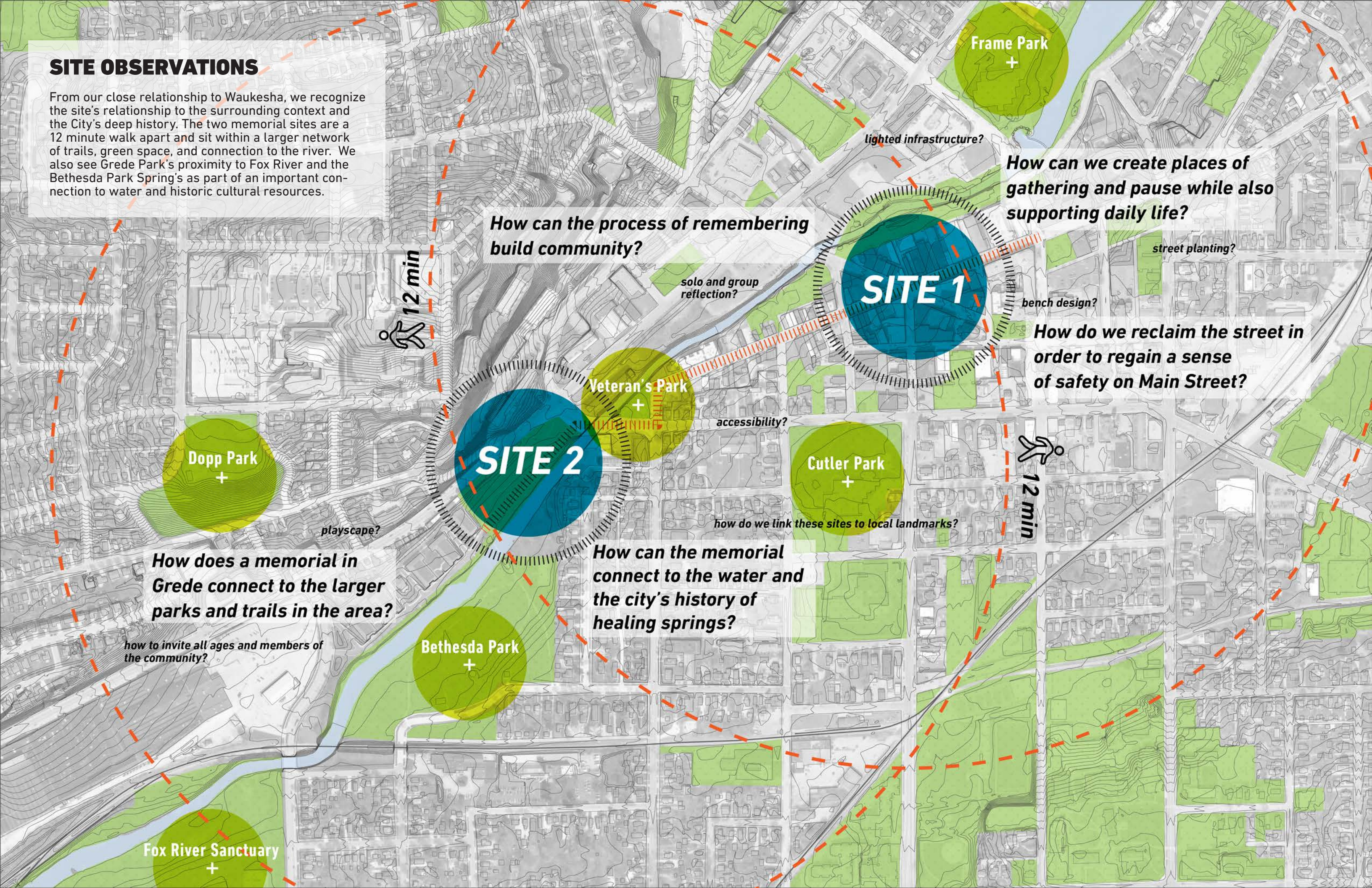


A MEMORIAL THAT RECOGNIZES THE MAGNITUDE OF LOSS AND THE NECESSITY OF HEALING

Grief and healing are not linear experiences. Like gardens, healing requires attention and tending, growth and care. Plants and light are representative of the healing process, showing the capacity to grow together. Fox river has long been a destination for healing and **The Garden** at Grede Park is an instinctual place for the community to collectively heal after the enormous trauma experienced together. In having a space to connect to nature, the community has a place to bring their grief and care for one another and this place.

SITE OBSERVATIONS

From our close relationship to Waukesha, we recognize the site's relationship to the surrounding context and the City's deep history. The two memorial sites are a 12 minute walk apart and sit within a larger network of trails, green space, and connection to the river. We also see Grede Park's proximity to Fox River and the Bethesda Park Spring's as part of an important connection to water and historic cultural resources.



How can the process of remembering build community?

How can we create places of gathering and pause while also supporting daily life?

How do we reclaim the street in order to regain a sense of safety on Main Street?

How does a memorial in Grede connect to the larger parks and trails in the area?

How can the memorial connect to the water and the city's history of healing springs?

How do we link these sites to local landmarks?

how to invite all ages and members of the community?

SITE 1

SITE 2

Frame Park +

Veteran's Park +

Dopp Park +

Bethesda Park +

Cutler Park +

Fox River Sanctuary +

12 min

12 min

lighted infrastructure?

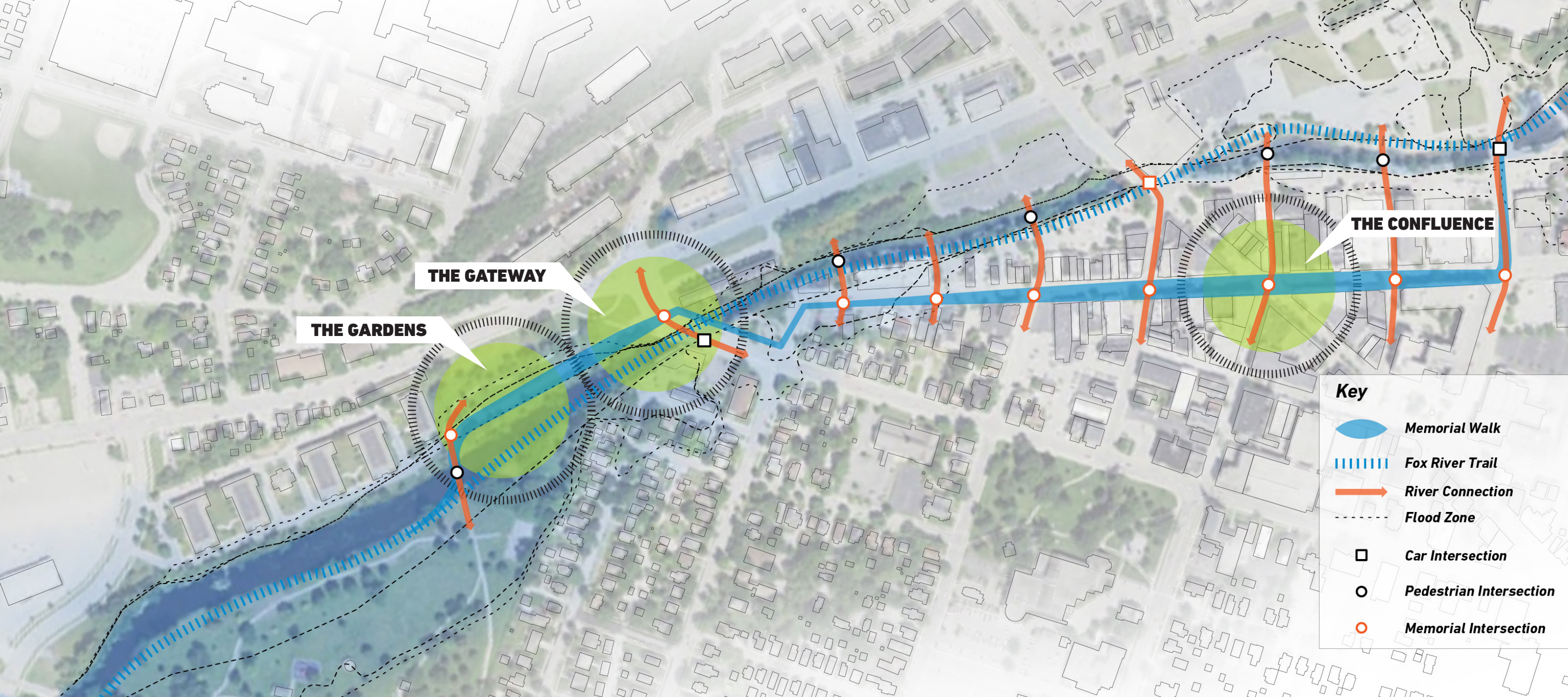
street planting?

bench design?

solo and group reflection?

accessibility?

playscape?



WAUKESHA HEALING WALK

Our proposal identifies a walk that traces the parade route and links together our three key designed spaces. We see this connected path as a Healing Walk, that links the Confluence at the Five Points, leading to the Gateway at the Wisconsin Avenue Bridge and ultimately to the The Gardens at Grede Park. We also see an opportunity in the space between the proposed memorial sites for reconsidering the streetscape with planting and signage. The design of these key spaces considers both day-to-day pedestrian traffic and special events and parades.

THE GARDENS

The Healing Gardens, tended to by the community, are surrounded by a series of limestone benches, a healing wall, and a cluster of six evergreen trees. By redirecting Riverwalk Drive to exit on West St. Paul Avenue, the primary entrance can be preserved for pedestrian access to the memorial, as well as a series of meandering garden paths. A boardwalk following the natural edge of the Fox River leads to the Grede-Bethesda bridge connecting to the wider Fox River Trail.

THE GATEWAY

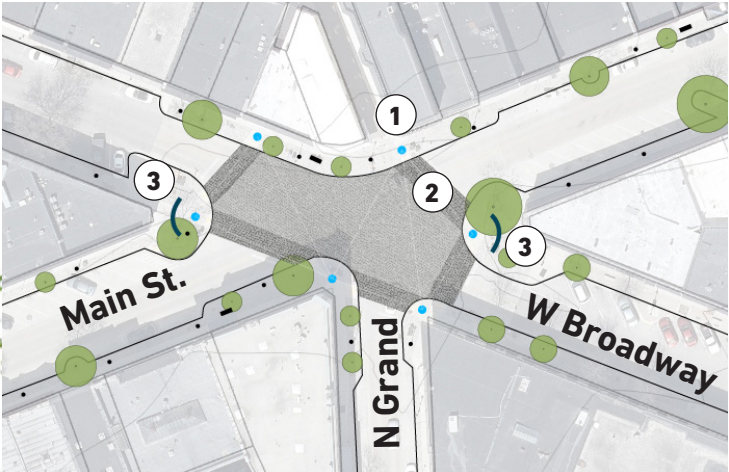
Coordinated lighting, planting, and expanded pedestrian space are elements used here to activate this underutilized central corridor. Like the Confluence, a series of suspended lights over the bridge signify the importance of this threshold and act as a Gateway for pedestrians moving across the street or for cars entering downtown. A new pedestrian entrance into Grede Park also invites people off of the street and into the proposed Memorial Gardens.

THE CONFLUENCE

At the Confluence, a series of catenary lights suspended over the intersection at Main St. and West Broadway indicate the significance of this space. On important anniversaries and special events, the lights shine blue to honor the victims. Raised limestone cobble street crossings and expanded pedestrian areas provide traffic calming measures, an elevated pedestrian experience and an event surface for gatherings like Friday Night Live.

CONFLUENCE

Main St. and West Broadway



CONFLUENCE PLAN

1. Street Lighting

Suspended catenary lights over Main St. and Broadway mark the intersection. Lights can change from white to blue to signify anniversaries and events.

2. Paved Pedestrian Crosswalk

Cobblestone pavers make crosswalks more prominent for an elevated pedestrian experience and to calm traffic.

3. Bench Seating

Signature eight foot benches at the Confluence and along Main St. give people places to pause and reflect.

4. Memorial Signage

Signage along Main St. gives context to the event, honors the victims, and celebrates the history of Waukesha.



FRIDAY NIGHT LIVE - VIEW LOOKING SOUTHWEST TOWARDS THE CONFLUENCE

GATEWAY
Wisconsin Avenue Bridge



GATEWAY PLAN

1. Street Lighting

Lighting creates a visual connection between the Confluence catenary lighting and the gateway into downtown Waukesha amplifying the threshold.

2. Paved Pedestrian Crosswalk

Paving creates a surface material connection to the Main St. intersection while also reclaiming the entrance into Grede Park for pedestrian processions.

3. Planted Medians

Expanded medians allow for a native planting of perennials and a space for pedestrians to safely cross the street.

4. Gateway Plaza

An expanded entrance plaza and seating allows for a gradual entrance into the park and proper seating for views over the bridge towards the water.



AFTER THE JULY 4TH PARADE - VIEW LOOKING SOUTHWEST TOWARDS GREDE PARK



THE GARDENS

Grede Park

1. Sunken Garden & Memorial Benches

Within the sunken Healing Garden, a cluster of six evergreen trees honor the six victims. In winter, these trees keeps their foliage and lights illuminate them for the Christmas Parade. The surrounding planting is a community-led healing garden of grasses and perennials. Six memorial benches will honor of Tamara, Jane, Wilhelm, Leanna, Virginia, and Jackson.

2. Healing Wall

On the north side of the sunken garden, a stone wall retains the slope. The names of the victims are etched into the walls surface. Visitors can create rubbings of the names. A bench site within.

3. Fox River Boardwalk

A wooden boardwalk follows the natural edge of the Fox River, allowing the flood water to pass underneath. The boardwalk leads to the existing Grede-Bethesda Bridge, connecting the memorial to the Fox River Trail.

4. Garden Paths

A series of accessible secondary garden paths wind through the wooded park and gardens allowing for solitary contemplation and healing walks.

5. Riverwalk Drive

By redirecting Riverwalk Drive to exit on West St. Paul Ave., the primary entrance can be preserved for pedestrian access to the memorial. Parking will be enhanced, perpendicular to the drive.

6. Understory Garden

Clusters of understory flowering Remembrance Trees will be planted on the western edge of the garden. These trees will sit upon a series of rolling landforms that help to block views from traffic and dampen the traffic noise into the sunken garden.

7. Gateway Plaza

HEALING GARDEN

A closer view of the Sunken Garden shows the Healing Wall and plantings. Limestone benches around the garden allow people to gather together or have solitary reflection. The garden is set just above the flood elevation.

1. Memorial Bench

18" Limestone benches will be inscribed with the names of those who lost their lives, creating a dedicated contemplative space for the families of those affected.

2. Memory Trees

Six mature centrally-planted trees honor and remember those lost in the tragedy and their continuing presence in the community.

3. Memorial Garden

A 71' shaded garden can be planted and maintained by the community, allowing for memorialization in the space to be an active process.

4. Fox River Overlook

The garden edge emerges to the southeast with a visual connection to the river and links to the boardwalk that moves perpendicular to the water.



SUMMER SOLSTICE MORNING - VIEW LOOKING NORTHEAST TOWARDS THE HEALING GARDEN

HEALING WALL

Encircling the memorial garden the Healing Wall creates a quiet and intimate space for both quiet and convivial remembrance.

1. Remembrance Trees

A planting of sponsored groves of flowering trees throughout the park represent those injured in the tragedy.

2. Healing Wall

A tapered 6' limestone wall tucks into the hillside providing an immersive space and reflects the signature blue uplifts into the garden and walk.

3. Offering Band

The stone band at the base of the wall offers a place for the community to leave offerings in remembrance of those impacted.

4. Community Bench

A 2' stone bench sits parallel to the garden allowing the community to pause and experience the healing wall.



FALL EQUINOX EVENING - VIEW LOOKING NORTHEAST TOWARDS THE HEALING WALL

Historic Fort Snelling at Bdote
Revitalization
Minneapolis, MN



PHILANDO CASTILE PEACE GARDEN

Falcon Heights, Minnesota

with 4RM+ULA + SEITU JONES

CLIENT
Local Community & Family of
Philando Castile

STATUS
Completed in 2022

AREA
5,000 SF

BUDGET
\$500,000

TEAM
TEN x TEN
4RM+ULA
Seitu Jones, Artist

REFERENCE
Karen Gray
Senior Partner, GrayHall
kgray@grayhall.com
651.222.8333

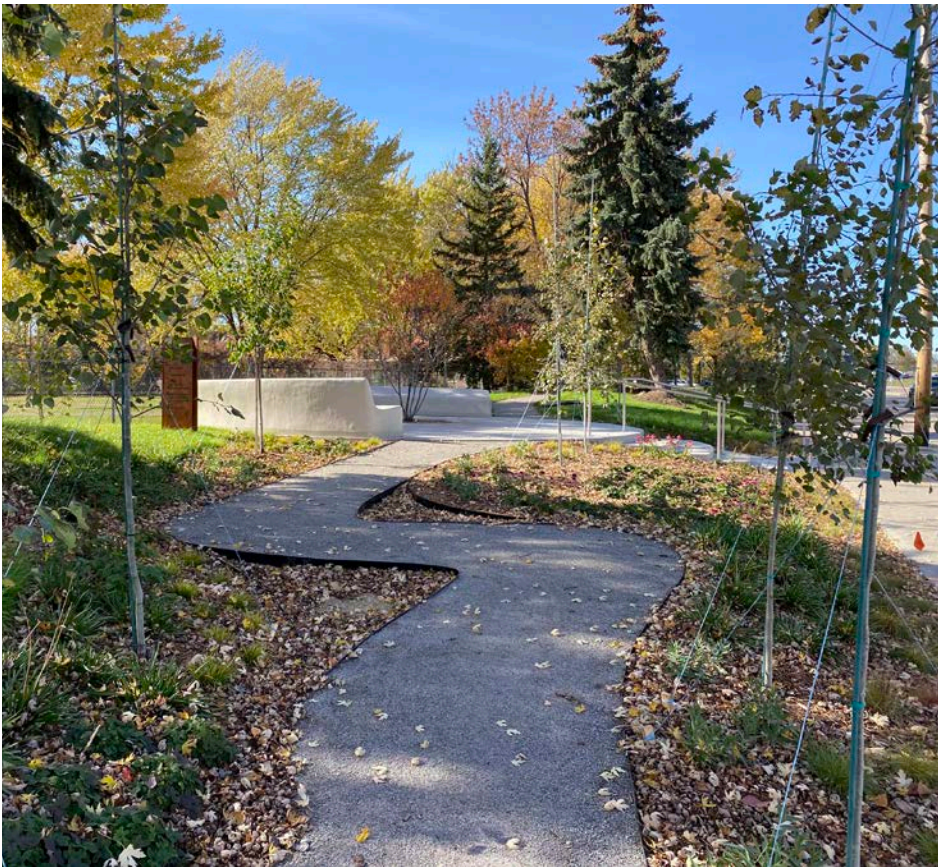
Philando Castile devoted his life to providing food and kindness to St. Paul Public Schools children. On July 6, 2016, he was killed in a police-involved shooting on Larpenteur Avenue in Falcon Heights, Minnesota, just west of the north entrance to the Minnesota State Fairgrounds.

The Philando Castile Peace Garden is a contemplative gathering space for peace, justice and healing built to honor and remember Philando Castile. In the wake of his tragic death at the hands of police officers, Philando's family, community members and local organizations joined forces to establish a vision and raise money to make the peace garden a permanent installation at the site of his shooting. TEN x TEN is working jointly with an amazing team of collaborators to co-design both a process and a garden. TEN x TEN was invited by 4RM+ULA architects to join the design team for the Concept and Documentation phases in collaboration with artist Seitu Jones. The Peace Garden opened in the Winter of 2021.

The site, located along the newly named Philando Castile Avenue (formerly Larpenteur Avenue) between Minneapolis and Saint Paul in Falcon Heights, MN. The site of the garden is also the place where Philando was murdered, in the street right of way adjacent to the garden. Since his shooting in 2016, the garden has become sacred ground, protest space and community gathering space. Permanent and temporal art installations, messages and artifacts have been placed throughout the core area of the garden for the last five and a half years and will continue to have a place among the new permanent features.



- 1 PHILANDO'S BENCH
- 2 COSMOGRAM
- 3 COMMUNITY ART PAVERS
- 4 THE WALK
- 5 THE VEIL
- 6 NATIVE PRAIRIE & EDIBLE PLANTS



HISTORIC FORT SNELLING AT BDOE REVITALIZATION

Minneapolis, Minnesota

CLIENT
Minnesota Historical Society

STATUS
Completed in 2022

AREA
12 Acres

BUDGET
Site: \$3.5 M

TEAM
TEN x TEN
LEO A DALY
Quinn Evans
Meyer Borgman Johnson
Split Rock Studios
CPMI
New History
Water in Motion

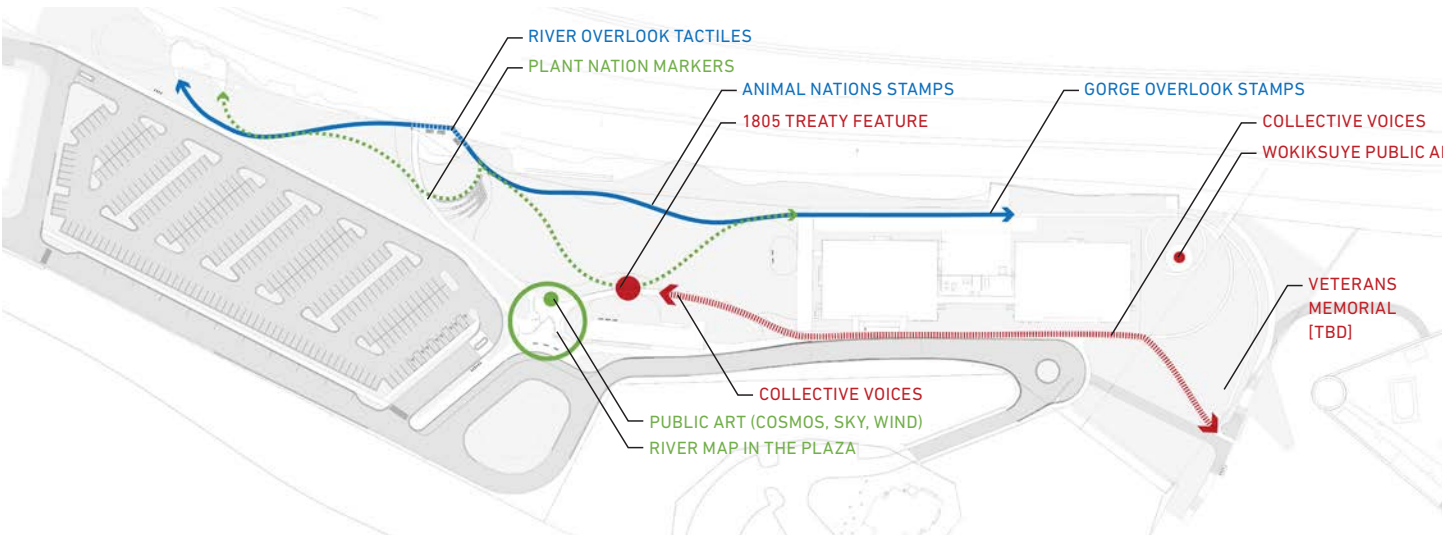
REFERENCE
John Crippen
Executive Director,
Hennepin History Museum
john.crippen@hennepinhistory.org
612.201.6917

Dakota elders tell of the creation of humans occurring in our homeland of *Minisota Makoce*, but specifically at the place called *Maka Cokaya Kin*, or the Center of the Earth. This place is at *Bdote*, which means the joining or juncture of two bodies of water and in this instance refers to the area where the Minnesota River joins the Mississippi River. The Dakota have ancient and sacred relations with the Bdote landscape.

TEN x TEN worked with LEO A DALY for the design of Historic Fort Snelling at Bdote. The site is a short distance to either of the Twin Cities' downtown cores and it adjoins multiple parks systems - Fort Snelling State Park and Minnehaha Regional Park. Perched on the bluffs overlooking the Mississippi River, the site offers powerful visual connections to the river and provides an opportunity to convey the deep history of the site through tactile connections with the landscape.

The vision of Historic Fort Snelling at Bdote is to inspire a better future by providing a place to learn, share and connect to all the complex stories that shape history in Minnesota. The River Bluff edge and views of the Mississippi river play a dominant role in re-framing the experience of the site and telling the site's history.

Historic Fort Snelling's buildings and grounds do not serve the public well as the current visitor center is dilapidated and the dramatic blufftop views of the Mississippi and Minnesota Rivers' confluence are hidden. A new comprehensive network of paths and gathering spaces weave across the landscape to connect the buildings with the landscape assets (the bluff, the river views, and existing and restored native plant communities) in more intuitive and meaningful ways. A re-configured parking lot and simplified arrival sequence will improve the visitor experience. The new paths and gathering areas provide for both group and individual experiences, creating a landscape experience that describes a much longer, layered history of this place as Dakota Homeland and a former military fort, where stories of indigenous people, trade, soldiers and veterans, enslaved people, and immigrants can co-exist.



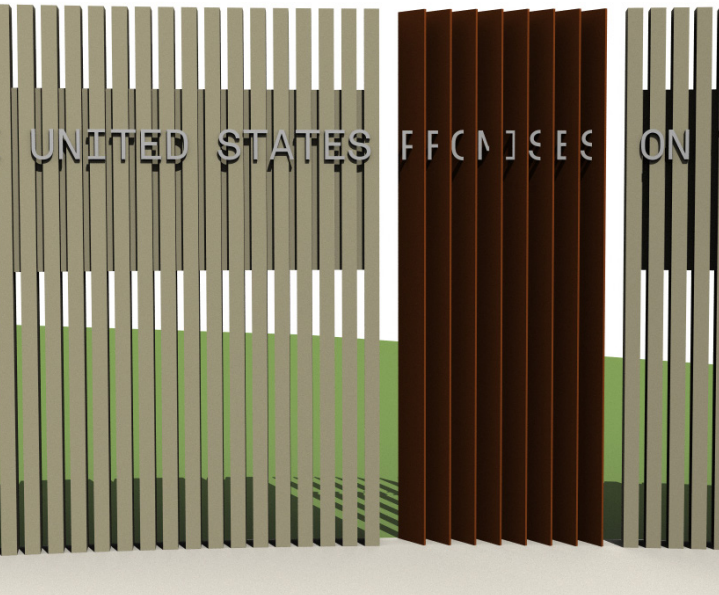
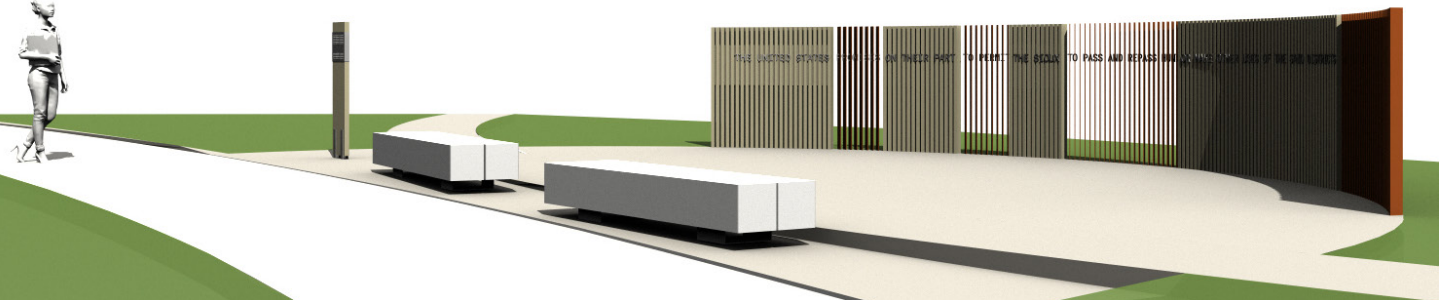
THE CONFLUENCE
Confluence of the Rivers
Creation Story
Star Knowledge

CHANGING LANDSCAPE
Cultural Survival + Revitalization
Plant + Animal Nations
Shifting Historical Narratives
Resilience and Climate Change
Stewardship - of all histories

HUMAN FACES
Treaties
Evolution of "freedom"
Racial + Economic Disparities
Military - Wartime Experience
Struggle + Resilience

REFLECTING FUTURE
Cultural Survival + Revitalization
Drawing Inspiration from the past
- how
Shifting historical narratives
- contradictions between US ideals and realities
- stewards of multiple histories

1805 TREATY FEATURE



THE UNITED STATES
PROMISES
ON THEIR PART
TO PERMIT
THE SIOUX
TO PASS AND REPASS, HUNT
OR MAKE OTHER USES OF THE SAID DISTRICTS
AS THEY HAVE FORMERLY DONE



TRI-FAITH COMMONS

Omaha, Nebraska
with HGA and APMA Architecture

- CLIENT**
Tri-Faith Initiative
- STATUS**
Completed in 2020
- AREA**
38 acres
- BUDGET**
Site, \$6.5M Bridge, \$1.5M
- TEAM**
TEN x TEN
HGA
APMA Architecture
Olsson
- REFERENCE**
Wendy Goldberg
Executive Director,
Tri-Faith Initiative
wgoldberg@trifaith.org
402.212.6391

The Tri-Faith Initiative(TFI) is made up of three Abrahamic faith groups who have chosen to establish a faith-based campus together that will be a place to practice respect, acceptance and trust. The three communities are of the Jewish, Christian, and Islamic faiths: Temple Israel, Countryside Community Church and The American Muslim Institute. The 38-acre sustainable campus is being planned on the previous site of Omaha’s only Jewish country club. Following the close of the country club, the site was sold to a developer and underwent a huge site restoration by the Army Corps of Engineers, restoring the existing Hell Creek and adjacent flood plain. The Tri-Faith Campus design is rooted in common Abrahamic values shared across the three-faiths such as the sacred role of water, the belief in only one God, and the role of prayer and worship.

These values are brought together and shared through a series of large and small-scale moves across the landscape. Each faith building and the future Tri-Faith Center are brought together in the landscape by a large circular path and series of bridges that cross Hell Creek. The secondary walks, faith-based gardens, range of gathering spaces and plantings are grounded by a mission of stewardship, ecological restoration and filtration of rain water. Each feature embedded in the landscape has been considered as part of the larger whole - as sacred, animated through orientation (qibla direction, rising sun, and the ancient Near East) and able to register change over time. When complete, the Tri Faith Campus will be the first destination in the world to unite Christian, Jewish and Muslim faiths on a collective campus. The biggest opportunity for the design team was to embed values of the organization in the campus and translate the TFI mission into a legible, powerful and physical place-based experience.



PLAN KEY

- 01 Tri-Faith Building
- 02 AMI
- 03 CCC
- 04 Temple
- 05 Tri-Faith Event Lawn
- 06 Ampitheater
- 07 Abraham’s Circle
- 08 West Meadow
- 09 East Meadow
- 10 Ampitheater
- 06 Precinct Paths
- 07 Orchard
- 08 Faith Backyards
- 09 Small Gathering Space
- 10 Tri-Faith Welcome Plaza



26TH AVENUE NORTH OVERLOOK

Minneapolis, MN
with 4RM+ULA and Juxtaposition Arts

CLIENT
Minneapolis Park + Recreation Board

STATUS
Completed in 2020

AREA
9,000 SQ FT

BUDGET
\$1.27 million

TEAM
TEN x TEN
4RMxULA
Juxtaposition Arts
Schuler Shook
MMY
EOR
MEP

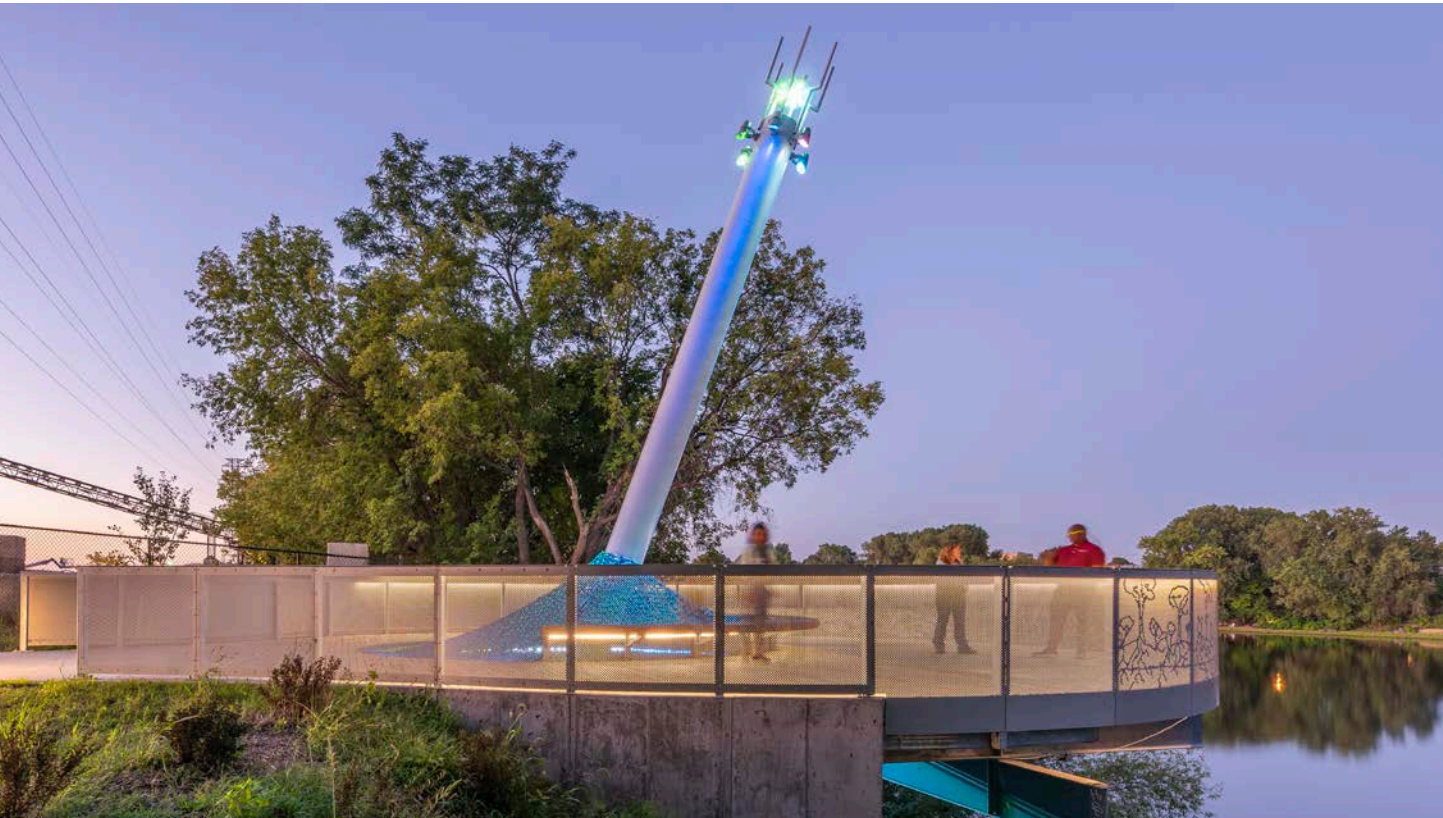
REFERENCE
Andy Schilling
Design Project Manager,
Minneapolis Park + Recreation Board
612.230.6466
aschilling@minneapolis.parks.org

The construction of I-94 in the 1950’s created a barrier that physically disconnected the communities of North Minneapolis from the Mississippi River. Fifty years later, the highway and industrialized rivers’ edge continue to prevent and limit access to one of the city’s most beloved natural amenities. With the recent completion of the 26th Avenue North Greenway, a critical missing link in MPRB’s Grand Rounds, this hub is now linked to Theodore Wirth Parkway, and the Jordan and Willard Hay Neighborhoods to the river.

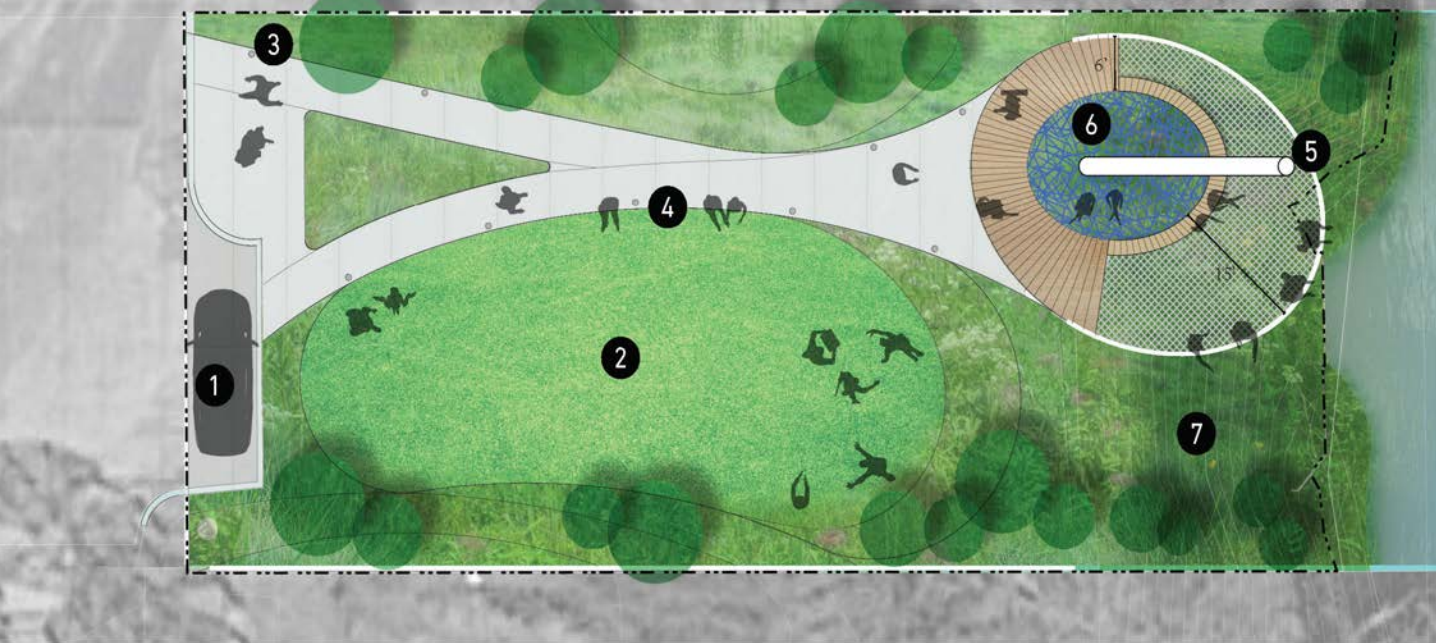
The overlook is perched 25’ above the shoreline with views to downtown and up river, providing an a new riverfront amenity where neighbors, bikers and tourists alike have a space to see, sense and occupy the river’s edge. Through several strategic design moves such as a 35’ tall beacon, playful seating elements, a gathering space, native planting and shoreline restoration, the project provides a highly visible destination on the river that will draw and welcome the community to this place for the first time in over half a century.

Our team co-created the concept through a collaboration with 4RM+ULA Architecture and local youth apprentices from Juxtaposition Arts. Together, with lighting designers and engineers, the team designed an interactive and visitor-centered overlook that remains sensitive to the site’s magic - the industrial heritage, river dynamics/shoreline ecology and North Minneapolis culture and the arts.

This critical connector is a beacon, highlighting a way for North Minneapolis to connect to the river - it will also be a key node along future riverfront trails that will connect Ole Olson Park, the BNSF bridge and north to the Lowry bridge to the rest of the Grand Rounds trail system. MPRB is partnering with the Minneapolis Parks Foundation (MPF) on this important RiverFirst project.



SITE PLAN



BLUFF GATHERING LAWN

- 1 ADA DROP OFF
- 2 GATHERING LAWN
- 3 WELCOME / INTERPRETIVE SIGN
- 4 SEATING LEDGE

OVERLOOK / RIVER BLUFF

- 5 BEACON
- 6 PLAY NET
- 7 HABITAT GARDEN / SLOPE STABILIZATION

INDIAN MOUNDS REGIONAL PARK CULTURAL LANDSCAPE STUDY + INTERPRETIVE PLAN

St. Paul, Minnesota

CLIENT

City of St. Paul

STATUS

Completed in 2020

AREA

111 Acres

BUDGET

\$100,000

TEAM

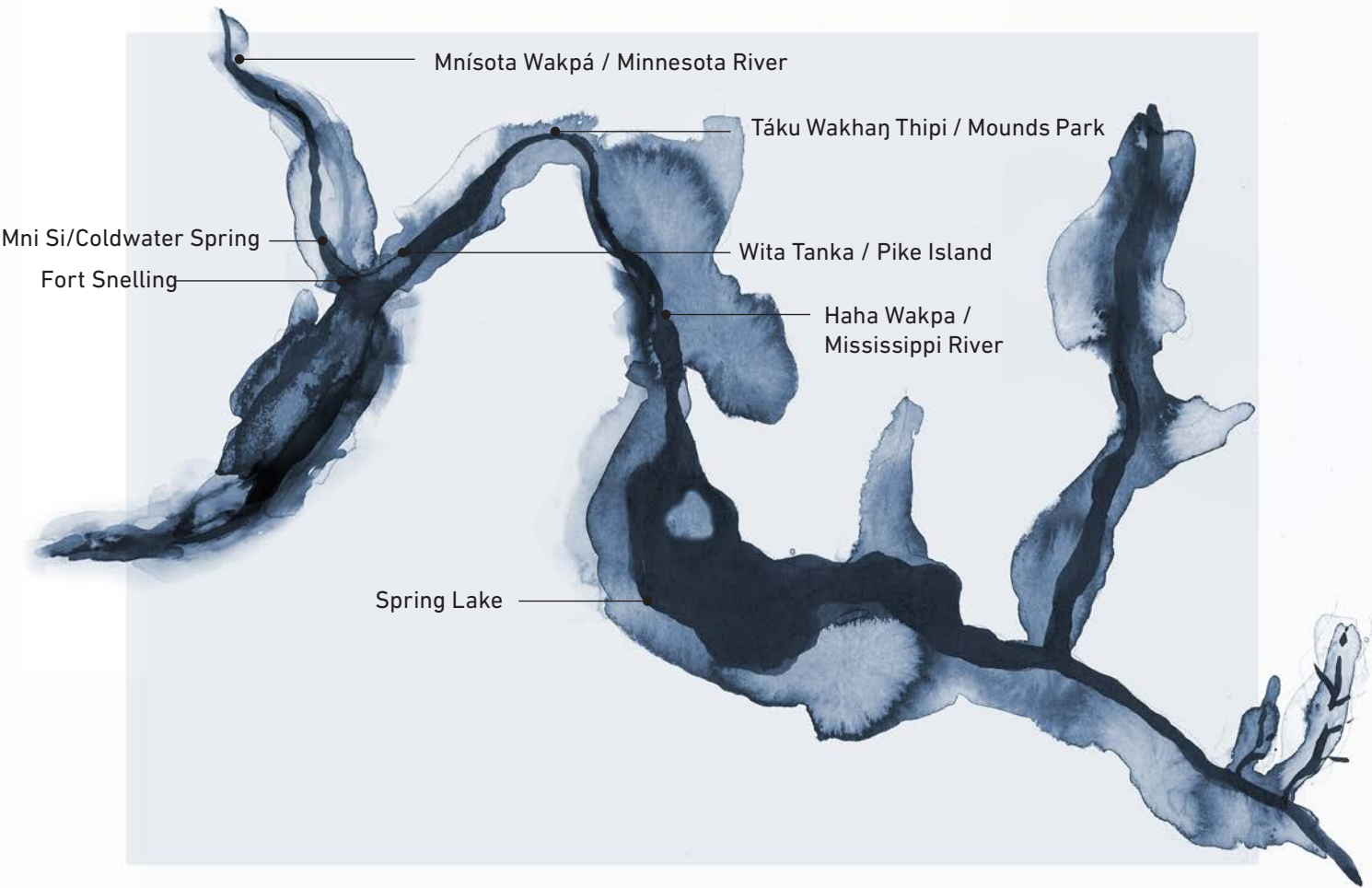
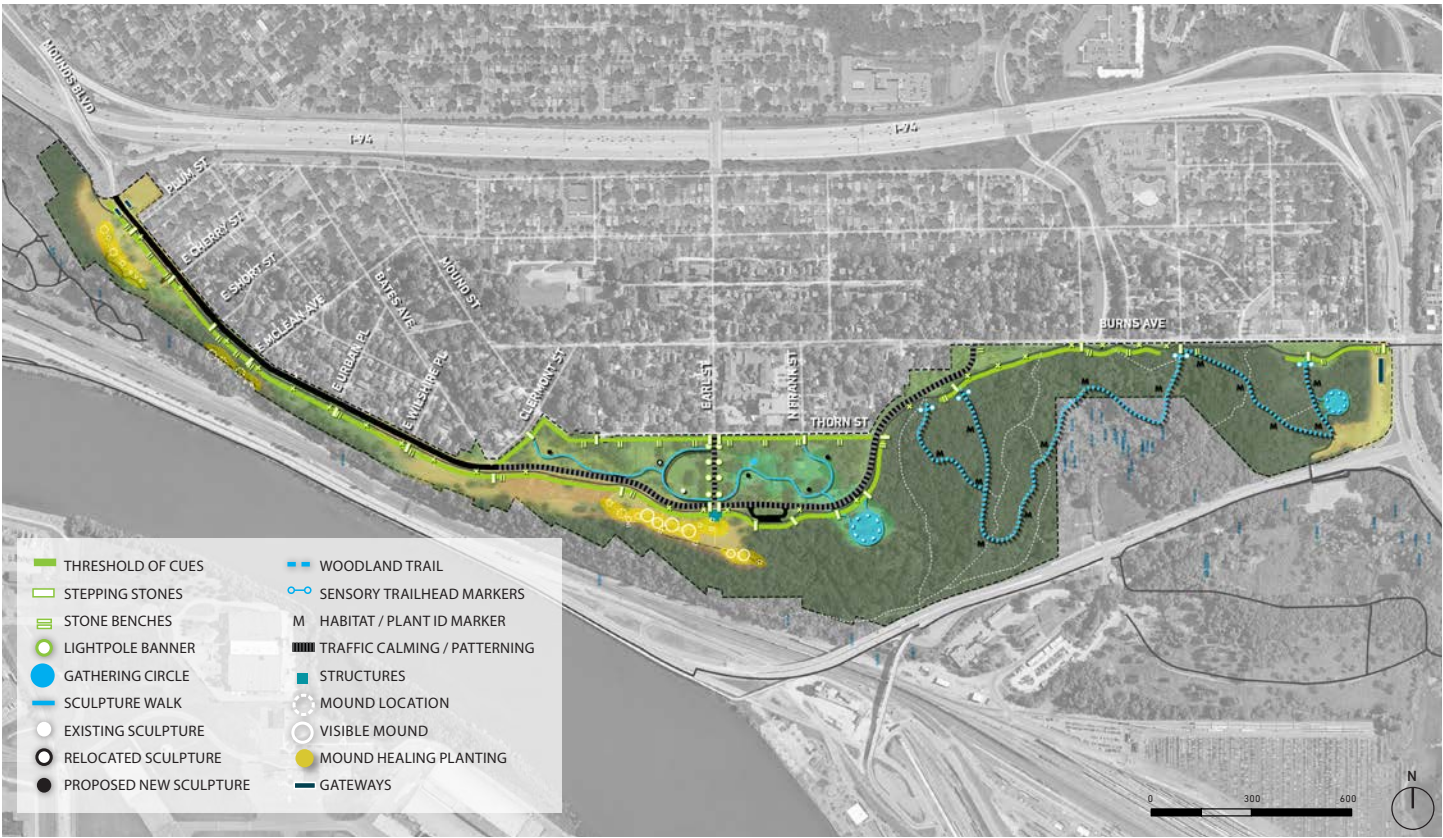
Quinn Evans
Allies LLC / Mona Smith

REFERENCE

Bianca Paz
Design Project Manager, -
Minneapolis Park +
Recreation Board
bpaz@minneapolis.org
612.230.6486

The Indian Mounds Regional Park Cultural Landscape Study and Interpretive Plan presents a difficult and thought-provoking challenge: How can we change a community’s perception of this landscape — an Indigenous place of burial drastically altered over the last two centuries to function as a public park — toward a perspective that is informed, empathic, and respectful of its sacredness? The Interpretive Plan describes a comprehensive set of strategies for messaging that aim to transform the perception of the sacred Dakota burial mounds from that of a park for picnics, barbeques, and play, to that of an Indigenous place of burial to be respected and honored.

Six key messages were developed through an iterative review process with the four Minnesota Dakota Tribal Historic Preservation Officers (THPOs), the Project Advisory Team (PAT), the community and the City of St. Paul Parks and Recreation Department. Respect + Honor, Mitákuye Ows’in (“all are related”), Dakota Land, Power of Place, Geologic Time, and Ecosystems of Imnizska (“white cliffs”) encompass the messages that build a better understanding of this site. Messaging across the site respectfully connects to the variety of evocative settings that exist here – places for healing, reflection, and learning – and places where visitors can see and feel that this is a sacred place. The messages are integrated into the site in a variety of ways (sculptural features, signs, paving interventions, cultural and native planting restoration, media, furniture and material changes) and help connect people to the site through stories, sensory experiences and new perspectives, embracing a world view where edges, hard lines and delineations do not exist to help dissolve the idea that the place of burial ends where the neighborhood begins. They are a reminder that this is not a park, it is a sacred place.



RONDO COMMEMORATIVE PLAZA

St. Paul, Minnesota
with 4RM+ULA and various artists

CLIENT
Rondo Avenue, Inc.

STATUS
Completed in 2018

AREA
5,000 SF

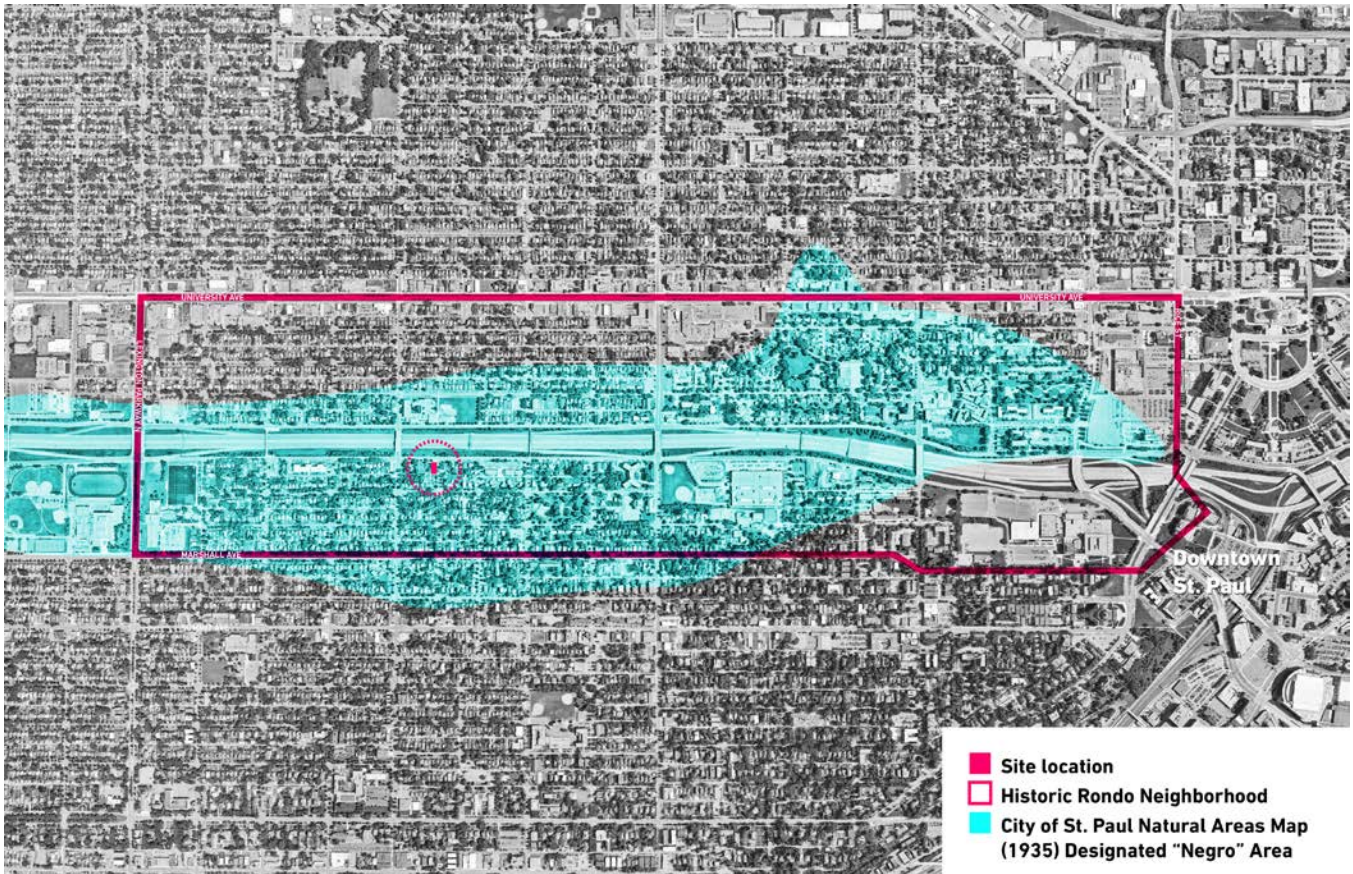
BUDGET
\$500,000

TEAM
TEN x TEN
4RM+ULA
Roger Cummings, artist
Seitu Jones, artist

REFERENCE
Marvin Anderson
Founder, Rondo Avenue, Inc.
mranderson989@comcast.net
651.315.7676

In 2013, the last 2-story member of the original Rondo neighborhood family of buildings succumbed to the wrecking ball after 97 years of community service. It was preceded in destruction by more than 80 siblings throughout Rondo. As keeper of Rondo’s legacies, Rondo Avenue, Inc. (RAI) initiated a plan that would re-purpose the vacant lot as a commemorative plaza to preserve the memory of Rondo and to provide an attractive and meaningful small park. Rondo Commemorative Plaza is a space that acknowledges the violent deconstruction of Saint Paul’s historic African American neighborhood, Rondo.

Completed in August 2018, the Plaza embodies the resilience of this small urban community. Like many of the properties lost to the construction of interstate 94, the pocket park is the size of a typical Saint Paul residential lot (5,662 SF). The plaza was conceived as an outdoor community room with a series of curated spaces for people to gather, reflect, play, perform and learn. The program is manifest through a series of interpretive spaces each interconnected to tell the story of Rondo’s past, present and future. The team was comprised of architects, artists and clients that are descendants of Rondo residents. TEN x TEN facilitated the team’s collaborative design process and translated a modest budget into a meaningful and functional place recalling both residential and infrastructural landscapes through materials and assemblies.



MINNESOTA MILITARY FAMILY TRIBUTE

St. Paul, Minnesota

HGA

CLIENT
State of Minnesota

STATUS
Completed in 2015

AREA
65,340 SF

TEAM
HGA

REFERENCE
James Goblirsch
Assistant Vice President for
Facilities Management,
Winona State University
james.goblirsch@winona.edu
507.457.5039

The Minnesota Military Family Tribute was designed to pay tribute to our military families rather than memorialize the soldier or conflict – a first of its kind. Located along the southern half of the Capitol Mall, the Tribute anchors the existing military memorials. Rather than tied to a single war or event, the Family Tribute honors the spouses, significant others, children, parents, grandparents, siblings and others who provided home-front support to military personnel, from the Civil War to the unfolding Middle East conflict. As such, the Family Tribute holds deep meaning for all Minnesota’s military and nonmilitary families—and hopefully inspires other states to build similar tributes.

Through plant materials, paving, stone and bronze, the 1.5-acre Family Tribute explores the concept of home and family through spatial experiences, formal seasonal plantings, and geological artifact tied to the celestial sky. Three main design elements unify the Family Tribute—The Walkway, The Story Stones, and The Gold Star Table. These motifs reaffirm the themes “Support Our Troops” and “Take Care of My Family.” The curving, tree-lined Thank You Military and Veteran Family Walkway embraces the Capitol Mall veterans memorials and connects the two major elements of the Family Tribute—the Story Stones on the east and the Gold Star Table on the west. The Story Stones are a series of 87 large stones representing the geological heritage of each of Minnesota’s 87 counties. Arranged along the promenade’s eastern end in a field of crushed stone, the Story Stones serve as a unique visual connection between loved ones that are deployed and their families at home. Finally, The Gold Star Table at the Walkway’s western end recognizes the sacrifice of Gold Star families. Made of bronze, the table recalls the traditional table where families gather to share dinner, stories, and laughter—a familiar symbol of domesticity, respect, and solemnity. The tribute is a place of gathering, remembrance, and celebration

Ross Altheimer co-led the design of the Minnesota Military Family Tribute while he was the Director of Landscape Architecture at HGA.



LAKEWOOD CEMETERY WELCOME CENTER

Minneapolis, Minnesota
with Snow Kreilich Architects + Miller Dunwiddie

CLIENT
Lakewood Cemetery

STATUS
Under Construction,
Anticipated Completion in 2024

AREA
5 acres

TEAM
TEN x TEN
Snow Kreilich Architects
Miller Dunwiddie
JE Dunn
NTH
MBJ
Schuler Shook
Pierce Pini
Cause Sustainability
TrueNorth
Emmanouil Potus
Global Specialty

REFERENCE
Chris Makowske
Executive Director,
Lakewood Cemetery
chrism@lakewoodcemetery.org
612.767.0063

To re-imagine the role of a cemetery in modern life and make memorialization more relevant, inviting and accessible to current and future generations, Lakewood Cemetery has initiated a new building and landscaping project that aligns with their progressive, nonprofit vision.

Lakewood’s desire to create a more relevant, accessible, and inviting experience led to the holistic re-assessment of the greater site and the design of a new Welcome Center. The unique context of the historic lawn cemetery and existing architecture necessitates the integration of landscape and building, and a careful balance of tradition with innovation.

TEN x TEN is working to design an inviting and accessible landscape that aligns with Lakewood’s commitment to sustainability and horticultural excellence while also honoring the site’s historic significance. The project includes a 25,000-square-foot, environmentally-conscious Welcome Center and surrounding gardens and walking paths that will offer an enhanced experience for the thousands of people that Lakewood welcomes and serves each year.

Goals of the project include a more welcoming front entry with contemplative gardens and walking paths that are open to the public; new building for serving families and our community that is warm, accessible and inviting for all generations, faiths and cultures; dedicated space for community education and engagement; expanded office space for a growing team of mission-driven advisors and service professionals; and responsible stewardship of Lakewood’s energy, water and plant resources.



LOUISE B. MILLER MEMORIAL GARDEN

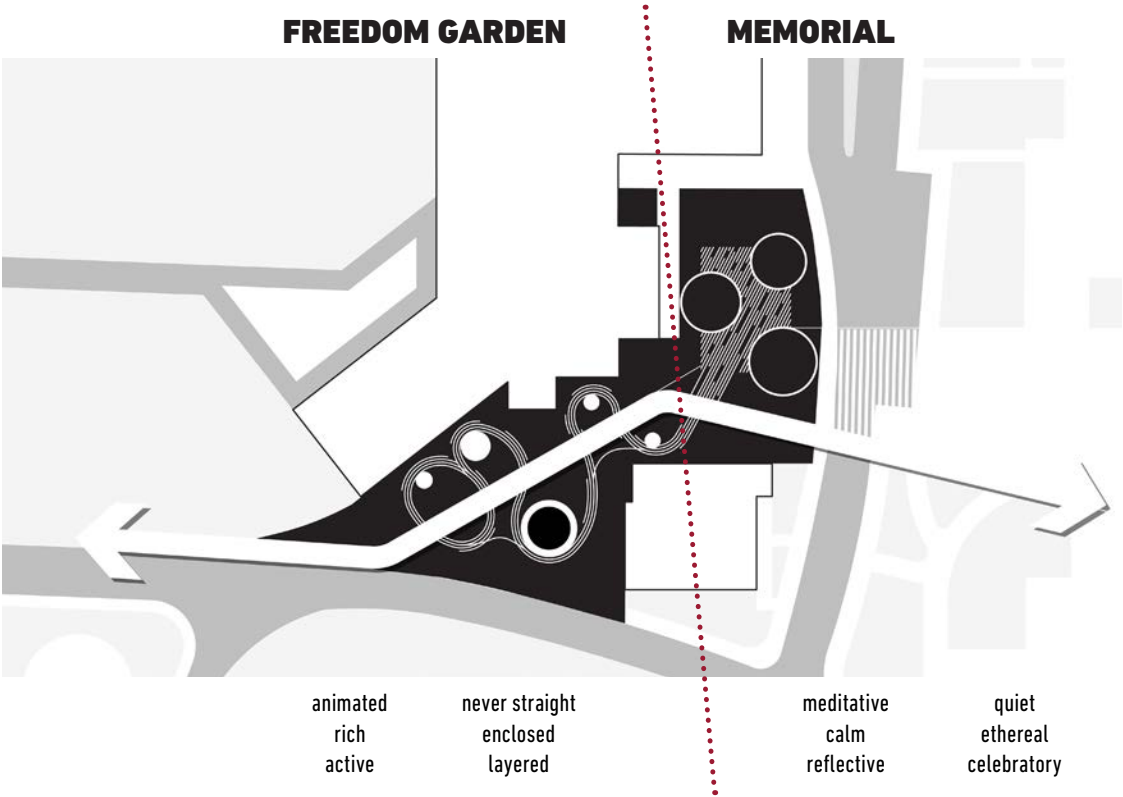
Washington, D.C.
with MASS Design Group

- CLIENT**
Gallaudet University
- STATUS**
Anticipated Completion in 2023
- AREA**
23,400 SF
- BUDGET**
Not disclosed
- TEAM**
TEN x TEN
MASS Design Group
Tillett Lighting
Fluidity
AMT Engineering
Mueller Engineering
IDEA Center
SiteWorks
- REFERENCE**
Christopher Hoffman
Manager, Design Services +
Space Planning
christopher.hoffmann@
gallaudet.edu
703.459.8440 (text only)

The mission of the Louise B. Miller Memorial Garden is to create an abundant, Black Deaf centric space. Gallaudet University is committed to confronting its past and leading a national reckoning with the destructive legacy of segregation through a memorial that both witnesses and honors the Black Deaf community’s fight for educational justice in America.

In 1952, Louise B. Miller, the mother of a deaf child, and other parents filed a class action suit against the Washington, D.C. Board of Education of for the right of Black Deaf children including Mrs. Miller’s son, Kenneth, to attend the Kendall School for the Deaf on the campus of Gallaudet College. The resulting victory in Miller v. Board, which pierced the Plessy v. Ferguson doctrine of “separate but equal,” was a watershed moment in Black Deaf history as well as the American civil rights movement. In ways that are significant yet historically overlooked, Miller v. Board, its mandate to create the Kendall School Division II for the Negroes on campus, and the school’s 24 Black students and four teachers helped lay the foundations of a civil rights movement that resulted in Brown v. Board, and over the next decade, methodically dismantled educational segregation in America.

The 23,400 SF Memorial and Freedom Garden forms a serene and sensory-rich environment to spatialize the enduring impact of Louise Miller and the Kendall School Division II. The Memorial itself, a rectangular scrim of water that hosts three circular sensory rooms - a meditation room, a gathering space, and a legacy room, is embraced by a dynamic sensory garden. A winding freedom path snakes its way through the garden to create an experience that embodies the fight for freedom and connects visitors to five additional sensory rooms of various sizes: three small reflective rooms, a small gathering room, and a large outdoor classroom. Together, the memorial, freedom path and sensory rooms create a platform to activate storytelling and activism. Throughout the garden interpretive panels are integrated to chronicle Louise’s fight for justice, to honor the momentous impact of her struggle. and to uplift the stories of the Black Deaf experience.



UNC CHARLOTTE REMEMBRANCE MEMORIAL

University of North Carolina, Charlotte, North Carolina
with Hypersonic and Susan Hatchell Landscape Architecture

CLIENT
The University of North Carolina
at Charlotte

STATUS
Anticipated Completion in 2023

AREA
18,000 SF

BUDGET
\$1.25 million

TEAM
Hypersonic
Susan Hatchell Landscape
Architecture
Engineered Designs Inc.
Lynch Mykins

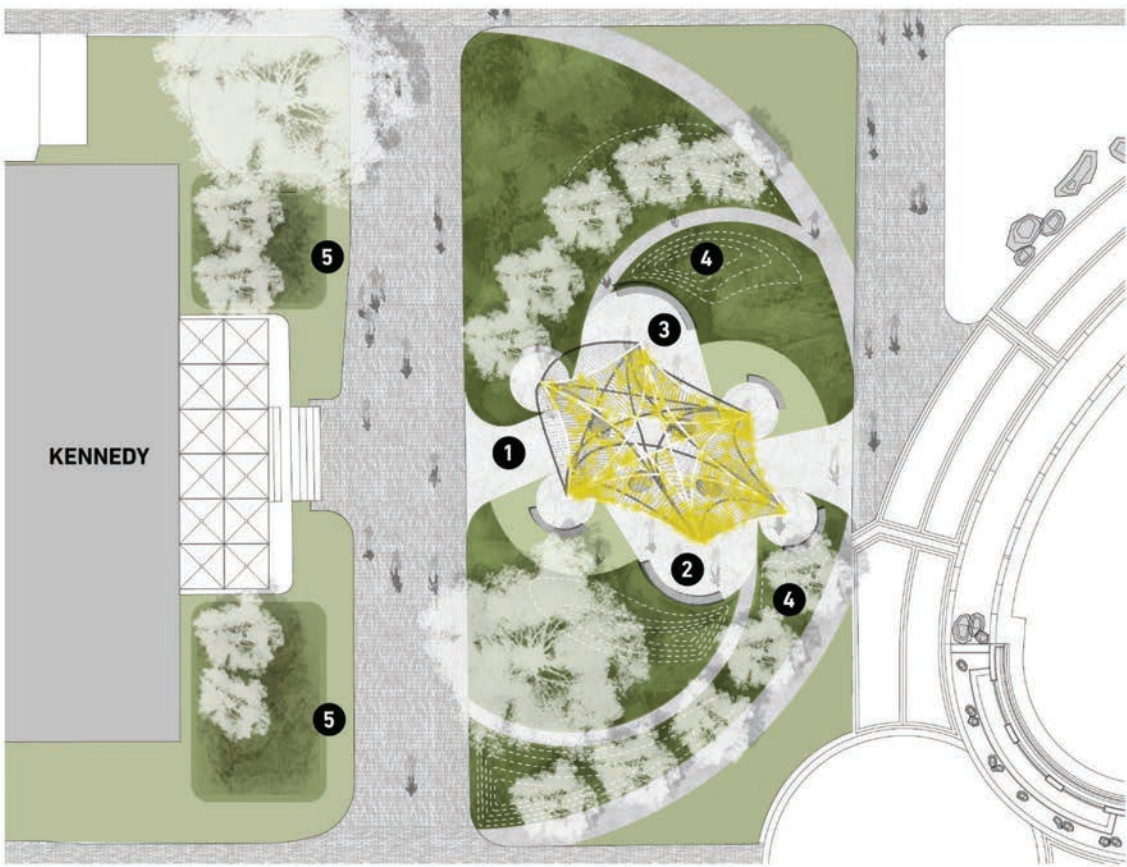
REFERENCE
Brook Muller
Dean, UNC Charlotte College of
Arts + Architecture
bmuller7@uncc.edu

On April 30th, 2019, Reed Parlier and Riley Howell lost their lives, four students were wounded, and their families, friends, and an entire community were forever changed. In the wake of this tragedy, Niner Nation and the City of Charlotte united with the strength, resilience, and hope that will be illuminated by this memorial.

Remembrance is an act, a ritual, and an engagement with the past. With that in mind, the design team determined an approach based on the themes of illumination, gathering, and healing: to make visible and be held in the light, to strengthen the community through human connection, to acknowledge the magnitude of loss and embrace an optimistic and hopeful future. Angels, stars, and the constellation of trauma and millions affected by gun violence became the team’s final design inspiration.

The memorial represents both the vast emptiness of the night sky, but also the feeling of being connected and together. An interactive sculptural piece made of stainless-steel arcs – grounded with six pillars – one to represent each person killed and wounded. This piece has been designed to heighten the senses – the design and materiality are delicate and strong – reflective and ephemeral.

Arcing stone benches embrace Reed and Riley’s pillars. Their names are engraved in the back of the bench. Stone seats similarly wrap and embrace the columns of the other four pillars – small rooms for gathering. Sculpted stone pebbles sit below the constellation and are designed to hold a reclined body comfortably – smooth and soft. Rippling outward from the sculpture is a landscape of low landforms, curving paths, and circles of trees. The landscape holds the sculpture carefully and softly within it, integrating additional opportunities for seating for study, contemplation and reflection.

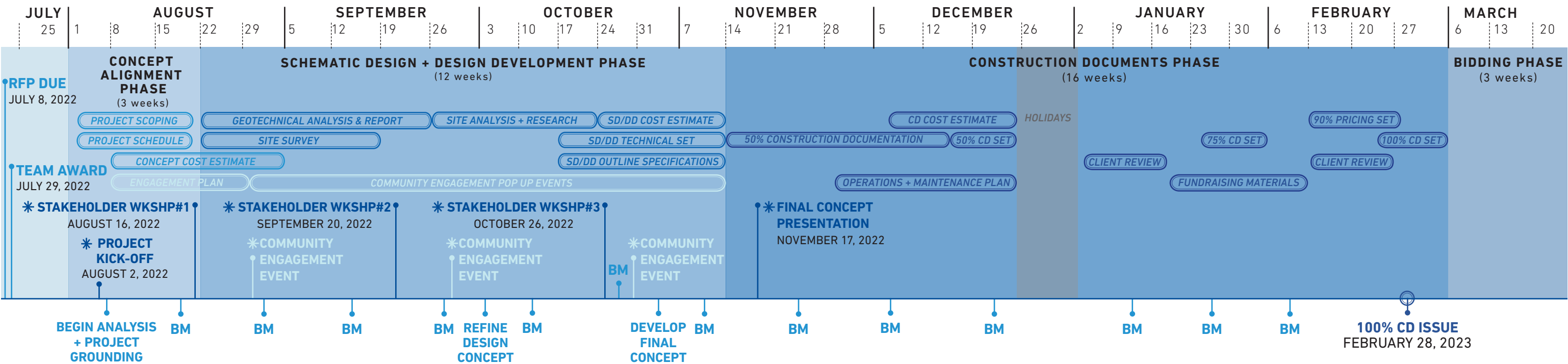


- 1 CONSTELLATION PLAZA
- 2 REED'S ROOM
- 3 RILEY'S ROOM
- 4 REFLECTION GARDENS
- 5 RAIN GARDENS



TIMELINE

DESIGN SCHEDULE



The following work plan outlines our team’s understanding of assigned roles and responsibilities for providing full professional design services for the Waukesha Christmas Parade Memorial. Upon selection, we will work with the Waukesha Christmas Parade Memorial design committee to refine the tasks and schedule as necessary to complete each phase of the design process. We propose biweekly check-ins (BM) with the client identified design committee throughout all phases of work and have outlined the other stakeholder meetings, deliverables, and milestone dates/presentations to demonstrate our general approach in the above timeline. All meetings will be held virtually via MS Teams platform unless marked with an asterisk (held in person).
Meeting Abbreviations:
BM: Biweekly Client Check-in (design committee)

TASK 1: CONCEPT ALIGNMENT PHASE
(3 weeks)

1.1: Project Planning

The TEN x TEN team will meet with the client to review project goals, objectives, scope, deliverables, communication protocols, and schedule. The group will finalize the project team and sub consultants (civil, structural, lighting and cost estimator). The group will also determine the level of effort needed to support each of the different meeting types, discuss initial project steps, strategize for community engagement and will walk the project site together.

Task 1 Deliverables:

- » Project Scoping + Schedule Confirmation
- » Engagement Plan
- » Meeting agendas, summaries and action items
- » Materials/presentations to support each meeting

Milestone Meetings / Workshops / Presentations:

- » (1) In Person Project Kick-Off Meeting with the client and project team
- » (1) In Person Project Stakeholder Workshop #1
- » Biweekly Meeting

TASK 2: SCHEMATIC DESIGN + DESIGN DEVELOPMENT PHASE
(12 weeks)

2.1: Site Assessment

The full team will begin assembling site data from existing and historic records as well as creating new records via on-site reconnaissance, site survey, geotechnical information and client design committee feedback. Through research and existing data, the team will provide analysis of existing conditions and environmental analysis (zoning, solar orientation, soil, watershed, utilities, topography, etc).

2.2: Community Engagement

Throughout this phase, we imagine hosting a series of community engagement pop-up events where we engage the public and gather input to refine the initial design concept for the memorials. We will prepare graphic materials to visualize the design concepts and have the public engage in providing feedback to refine the memorial design concepts. We will also create an online survey to gather additional design feedback via online platforms. We will conclude the community engagement with a refined design concept.

2.3: Preferred Concept

The team will develop a preferred design concept to a greater level of detail based on client design committee and community engagement feedback. The final concept will include associated narratives, phasing and implementation strategies.

2.4: Design Documentation

While we are gathering design input from the community, we will start SD/DD level drawings and outline specifications. After geotechnical analysis summary, site survey, stormwater calculations , utility analysis and structural input, our team will conclude this phase with a set of SD/DD level technical drawings and outline specifications.

Task 2 Deliverables:

- » Review concept and SD/DD cost estimates
- » Geotechnical analysis and report
- » Site survey
- » Stormwater calculations
- » Meeting agendas, summaries and action items
- » Materials/presentations to support each meeting
- » Narrative of construction, maintenance and operations strategies for inclusion in SD/DD packages for pricing
- » SD/DD -level plans and details for inclusion in DD packages for pricing
- » SD/DD - level outline specifications for pricing
- » Prepare fundraising materials (plans, 3D views, etc.)

Milestone Meetings / Workshops / Presentations:

- » (1) In Person Project Stakeholder Workshop #2
- » (1) In Person Project Stakeholder Workshop #3
- » (1) In Person Community Engagement Events:
 - » pop-up events (parks, rec centers, downtown, etc.)
 - » online survey and result summary

TASK 3: CONSTRUCTION DOCUMENTS PHASE
(12 weeks)

3.1: Construction Documentation

During this phase TEN x TEN will advance technical design documents and specifications towards 90% Pricing set and 100% CD document issue. We propose two formal client review

comment periods for the 50% CD and 90% pricing set issues. Simultaneously with final documentation, our team will prepare and issue operation and maintenance plan. To wrap up the community engagement process, we will present the final design concept in a community event to announce the final design to the public. The TEN x TEN team along with the client team will identify fundraising strategies, partnerships and opportunities with guidance from the client.

Task 3 Deliverables:

- » Fabrication ready drawings, files and specifications
- » Review of cost estimate and cost alignment with drawings
- » Operations + Maintenance Plan
- » Presentation to community
- » Review final cost estimates and align drawings to reflect costs
- » Narrative of construction, maintenance and operations strategies for inclusion in CD packages for pricing
- » CD -level plan layout and details for inclusion in CD packages for pricing
- » CD - level outline specifications for pricing
- » Prepare fundraising materials (plans, 3D views, etc.)

Milestone Meetings / Workshops / Presentations:

- » (1) Final Concept Community Presentation to public

TASK 4: BIDDING PHASE
(3 weeks)

4.1: Bidding Phase

During this phase the TEN x TEN team will provide formal responses to questions from potential bidding contractors and sub-contractors, as well as issuing any required addenda or other documents to support the bidding process.

Tri-Faith Commons
Omaha, NE



FEE + TASKS

FEE + TASKS

The following task summary outlines the tasks necessary to complete each of the memorial design phases. Upon selection, the TEN x TEN team will work with the Parade Memorial Commission and City of Waukesha to identify civil, structural, lighting design and cost estimator partners to join the team. With our current experience in the construction market with this project type, we estimate the construction cost for the proposed design to be between \$1.5 - 2.5 million. Our proposed fee is anticipated to be 15% of the total construction cost to complete the outlined tasks below and design scope illustrated in our proposal. Our best estimate is a fee range of \$225k - \$375k. Reimbursable estimate forthcoming. We look forward to having a dialogue with the city to align our assumptions.

Aug 1 - Aug 19	TASK 1	CONCEPT ALIGNMENT PHASE (3 weeks)
2 in-person trips	1.1	Project Planning + Administration
	1.2	Project Scoping
	1.3	Project Schedule
	1.4	Engagement Plan
	1.5	Civil Engineering onboarding
	1.6	Structural Engineering onboarding
	1.7	Lighting Design onboarding
	1.8	Cost Estimate Review + Alignment
	MTGS	MEETINGS / PRESENTATION / WORKSHOPS
		Project Kick-off Mtg
		Stakeholder Workshop #1
		Biweekly meetings with client (virtual)
		Biweekly internal design team meetings (virtual)
Aug 22 - Nov 11	TASK 2	SCHEMATIC DESIGN + DESIGN DEVELOPMENT PHASE (12 weeks)
3 in-person trips	2.1	Project Management and Coordination
	2.2	Site Survey
	2.3	Geotechnical Analysis + Report
	2.4	Civil Engineering (drainage, stormwater calculations, water reduction calculation)
	2.5	Structural Engineering
	2.5	Lighting Design Concept
	2.6	Design Refinement
	2.7	Presentation and Community Engagement Prep
	2.8	100% SD/DD Narrative (construction materials, structural and MEP systems, engineering narrative)
	2.9	100% SD/DD Technical Set (Plans, Sections, Elevations, Details)
	3	100% SD/DD Outline Specifications
	3.1	SD/DD Cost Estimate
	3.2	Cost Analysis and Alignment
	MTGS	MEETINGS / PRESENTATION / WORKSHOPS
		Stakeholder Workshop #1
		Stakeholder Workshop #1
		Community Pop-up Events (3)
		Biweekly meetings with client (virtual)
		Biweekly internal design team meetings (virtual)
Nov 14 - Feb 28	TASK 3	CONSTRUCTION DOCUMENTS PHASE (16 weeks)
1 in-person trip	3.1	Project Management and Coordination
	3.2	Final Design Concept
	3.3	Operations + Maintenance Plan
	3.4	Presentation Prep
	3.5	100% CD Technical Set (Plans, Sections, Elevations, Details)
	3.6	100% CD Specifications
	3.7	Client Review Comment Review
	3.8	CD Cost Estimate
	3.9	Cost Analysis and Alignment
	MTGS	MEETINGS / PRESENTATION / WORKSHOPS
		Final Concept Community Presentation
		Biweekly meetings with client (virtual)
		Biweekly internal design team meetings (virtual)
March 6 - Mar 24	TASK 4	BIDDING PHASE (3 weeks)
	4.1	Bidding Assistance (addenda, submittals, attend bid opening)
Mar 24 - Oct 24	TASK 5	CONSTRUCTION ADMINISTRATION (24 weeks)
6 in-person trips	5.1	Site Visits
	5.2	Observation Reports (Weekly)
	5.3	Monthly Construction Reports
	5.4	Review and Select Plant Material
	5.5	Review and Select Tree Material
	5.6	Observe Layout and installation
	5.7	Respond to RFIs and prepare ASIs
	5.8	Review shop drawings and submittals
	5.11	Substantial Completion
	5.12	Punch List (submittal to SCO, final review, certification)
	MTGS	MEETINGS / PRESENTATION / WORKSHOPS
		Weekly Construction Meetings (Virtual)



Indian Mounds Regional Park
St. Paul, MN



TENIXTEINI

Ross Altheimer, PLA, ASLA, FAAR

Principal + Co-Founder

ross@tenxtenstudio.com

807 Broadway St NE Suite 221
Minneapolis, MN 55413

612.440.8369