

PERMANENT SIGN PERMIT APPLICATION
ONE APPLICATION PER SIGN

SITE ADDRESS : 2402 E. Moreland Blvd.

Total Number of signs applying for today: 1 Value of Sign(s) \$ 25,000.00

FEE: \$40 min. or \$1 per sq. ft. Required in full at time of submittal. FEE IS NON-REFUNDABLE.

Location of THIS sign: Southwest corner of property

Office Use Only

☐ PICTURE/Drawing/Site Plan

☐ FEE

☐ ELECTRICAL PERMIT

Paid: Initials:

Permit copy will be mailed to this address

Business Name: Chase Bank

Sign Contractor: Lemberg Electric

Owner Name: Chase Bank

Address: 4085 N. 128th Street

Business Phone:

City/State/Zip: Brookfield, WI 53005

For questions call: ☐ Business ☒ Sign Contractor

Phone: 262-364-0052

IF THIS IS AREA IS LEFT EMPTY, PERMIT WILL NOT BE MAILED.

(MANDATORY FIELD; application will be returned if left blank.)

You must submit an electrical permit signed by a licensed electrician with all illuminated sign permit applications.

HAS THIS BEEN DONE? ☒ YES, Permit No. BL - - ☐ NO ☐ NOT APPLICABLE

ATTACH A COLOR PHOTO, DRAWING, AND/OR SITE PLAN. Show dimensions to scale, colors, and location of sign.

CHECK ONE:

☒ New Sign ☐ Existing Sign ☐ Face Change Only

TYPE OF SIGN (Circle all that apply):

Wall Door Projecting Window Roof Billboard

Flat Awning Freestanding Yard Double Face

Horizontal Width of Sign 3'-4 3/4" Vertical dimension of Sign 17'-0" TOTAL Square Footage: 58.14 sq. ft.

If Sign is detached or projecting, please supply: Total Height 17'-0" Clearance: N/A Setback: 25'-0" +

Premise Data: Street Frontage: 250' + Building or Tenant Space Width: 125' + Other Street Frontage: 500' +

PLEASE LIST ALL EXISTING SIGNAGE ON THE BACK OF THIS SHEET. (Attached)

By my signature, I state and agree, that I have carefully examined the completed application and do hereby certify that all information herein is true and correct, and I further certify that any and all work performed shall be done in accordance with the Ordinances of the City of Waukesha, and the Laws of the State of Wisconsin pertaining to the work described herein

Legal Signature Timothy R. McGrath Print Name Tim McGrath Date 10/07/2016

OFFICE USE ONLY

Zoning District: Gross sign area for premises: Area used by other signs:

☐ Approved Conditions (if any):

☐ Must submit electrical permit within 30 days of meeting or permit shall be voided.

☐ Denied Does not conform to:

☐ Height ☐ Architecturally compatible ☐ Not to face R-district ☐ Clearance ☐ Area ☐ Corner Vision
☐ Projection ☐ Avoid needless elaboration ☐ Consolidation of signs ☐ Distracting sign ☐ Setback ☐ Other

Authorized Signature Date of Review

INCOMPLETE APPLICATIONS MAY NOT BE PROCESSED.

Review Board meets the 3rd Monday of the month at 8:15 am. DEADLINE IS THE MONDAY BEFORE THE MEETING.

CITY OF WAUKESHA * 201 DELAFIELD STREET * WAUKESHA, WI 53188 * (262) 524-3530

DEPARTMENT OF COMMUNITY DEVELOPMENT - BUILDING INSPECTION
APPLICATION FOR ELECTRICAL PERMIT

JOB ADDRESS: 2402 E. Moreland Blvd. Date 10/07/16 Permit # _____

Owner Name: Chase Bank Estimate of Cost \$500.00

Elec. Contractor Company: Lemberg Electric Phone 262-781-1500 Contractor License # / Exp Date 263214/10/30/20

Master Electrician Name Dave M. Washebek Phone 262-781-1500 Master License # / Exp Date 170342/10/30/19

Address: 4085 N.128th Street Brookfield, WI :City/Zip 53005 No. of Units _____

→ DESCRIBE WORK/LOCATION: Installing an illuminated sign @ above address Heat Contractor:

	Type of Device or Wiring Installation	Fee/Rate	No.	Amount
1. Services:	Temporary - 90 Day Limit	\$30.00		
(State Size)	First 100 Amp	30.00		
	Each Additional 100 Amp	20.00		
	Sub-Service or Feeder Disconnect #8 And Larger	10.00 ea.		
	Emergency Wiring or Repairing Illegal Or Condemned Wiring	20.00		
2. Outlets:	120 Volts - 20 Amp or Less (Outlets in gangs are counted individually)	1.00 ea.		
	220 Volt Power Outlets			
	20 and 30 Amp	5.50 ea.		
	Over 30 Amp	6.00 ea.		
3. Signaling Systems	Fire Alarm (Commercial requires additional permit from the Fire Dept.)	20.00 ea.		
	Intercom; Load Management	4.00 ea.		
	Heat or Smoke Detectors, Horns, Bells, Pull Stations	1.00 ea.		
4. Fixtures:	Incandescent, Strip Lighting	1.00 ea.		
	Fluorescent	1.50 ea.		
	Arc, Mercury, Sodium Vapor, Quartz, Dimmers, Time Clocks	4.00 ea.		
5. Direct Wired:	Water heater, Range, Dryer, Dishwasher, Disposal	6.00 ea.		
6. Heating, Ventilating & Air Conditioning:	Furnaces*, Heat Pumps, Space Heaters	15.00		
	Vent & Paddle Fans, Hoods (\$1 minimum)	1.00 hp.		
	Electric Heating	5.00ea unit		
	Refrigeration, Air conditioning, Air Cooling Or Similar Devices	+.50 per kw		
7. Motors:	20.00/unit		
	1.00 hp		
8. Area Lighting Poles or Footings for Fixtures or Signs, Outdoors Post Lanterns		10.00 each		
9. Lamp Signs and Outline Lighting (\$15 minimum)30 socket		
10. Swimming Pool Grounding of Pool & Equipment				
	-In-Ground	75.00		
	-Above Ground	50.00		
	-Spa or Hot Tub	50.00		
	-Hydro Massage Bathtub	20.00		
11. Busways, Wireways, Sub-Feeders, and all Underfloor Raceways - one inch or larger		1.00 per ft.		
12. Fuel Dispensing Pumps		25.00 ea		
13. X-Ray or Radiation Equipment, Motion Picture Machine		25.00 ea		
14. Generators, Transformers50 per kw		
15. The following items are to be rated at \$.50per kw, with a minimum of \$25.00. per unit; Industrial Electric Furnaces, Capacitor Banks, Reactors and Industrially-Owned Sub-Station50 per kw		
16. Electrical Equipment or Apparatus not herein Enumerated			(Sign)	\$60.00
17. Reinspection Fee		75.00		
18. Failure to Call for Inspection or Installations, and Final Inspections Before Occupancy		75.00		
19. Double Fees for Work Started Before Permit Is Issued				
20. Minimum Permit Fee*		60.00*		
	*EXCEPTION: If job consists of one replacement furnace only	*40.00		
TOTAL FEES				

DOUBLE FEES SHALL BE CHARGED IF WORK IS STARTED BEFORE PERMIT IS ISSUED. This permit is in effect for 18 months from date of issue unless work is not started within 120 days of issue date, or activity ceases for more than 120 days, after which this permit shall lapse.

WORK COVERED BEFORE INSPECTION WILL BE REQUIRED TO BE TOTALLY EXPOSED FOR INSPECTION.

Dave M. Washebek
Signature of Applicant

dwashebek@lembergelectric.com
Email of Applicant



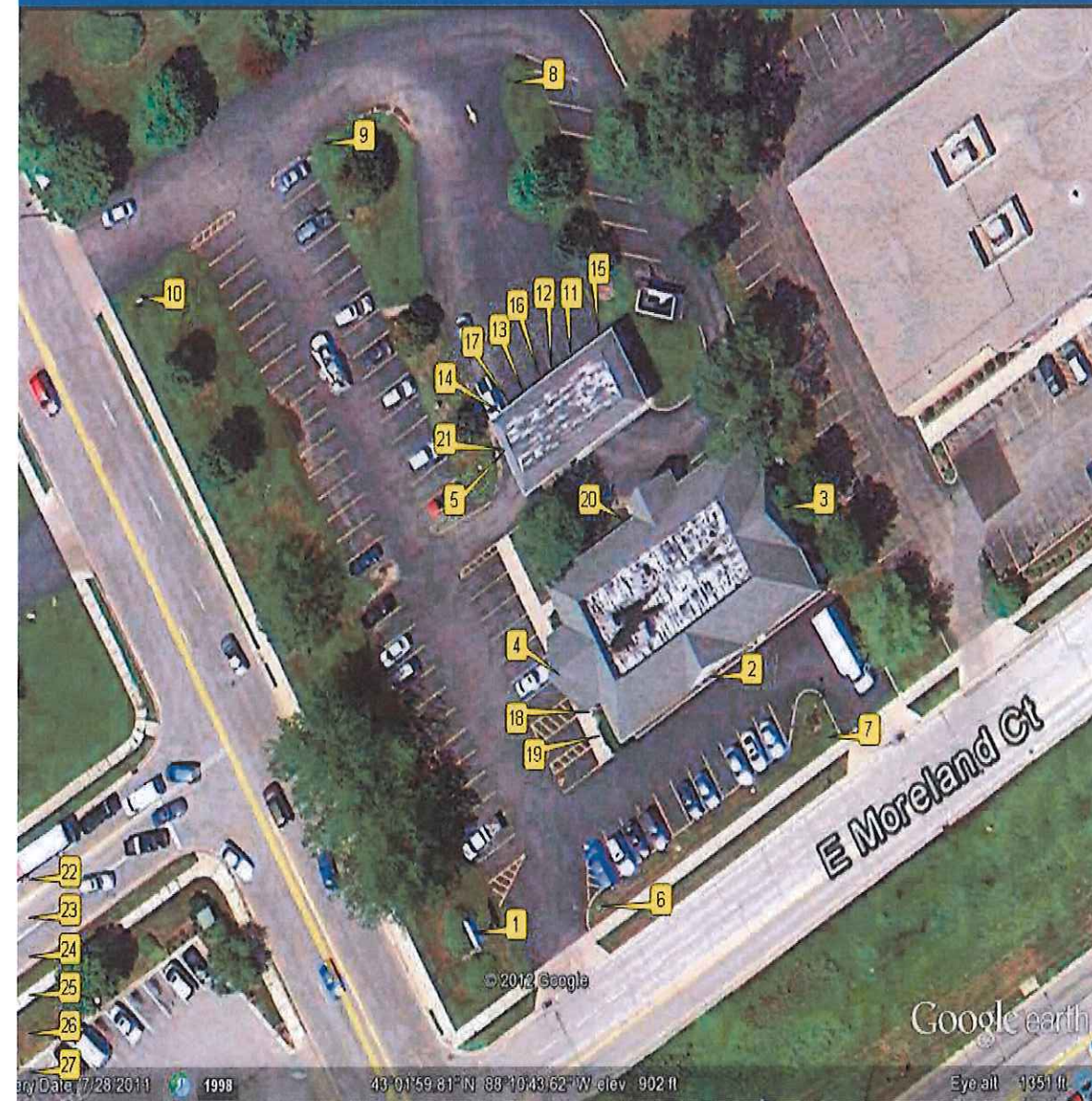
(Existing Sign Inventory)

Location Information		
GREDL:		515854
DND:		739
Name:		East Waukesha
Address:		2402 E Moreland Blvd
City, ST Zip:		Waukesha, WI 53186

Sign No	Sign Use	Sign Category	Sign Type Label	Sign Type Description	Notes
1	Exterior Signage	Ground Signage	P-50	Pylon - Illuminated - Double Face	
2	Exterior Signage	Lettersets	LIF-WBO-20	Channel Letters - Illuminated White with Blue Octagon	
3	Exterior Signage	Lettersets	LIF-WBO-20	Channel Letters - Illuminated White with Blue Octagon	
4	Exterior Signage	Lettersets	LIF-WBO-20	Channel Letters - Illuminated White with Blue Octagon	
5	Exterior Signage	Lettersets	LIF-R-WBO-12	Raceway - Illuminated - White with Blue Octagon	
6a	Exterior Signage	Directional	D-7.6	Directional monument - 7.6 sq ft - Non Illuminated - Double Face	← Drive-Up Banking ← Drive-Up ATM ← Customer Parking
6b	Exterior Signage	Directional	D-7.6	Directional monument - 7.6 sq ft - Non Illuminated - Double Face	→ Drive-Up Banking → Drive-Up ATM → Customer Parking
7a	Exterior Signage	Directional	D-7.6	Directional monument - 7.6 sq ft - Non Illuminated - Double Face	→ Drive-Up Banking → Drive-Up ATM → Customer Parking
7b	Exterior Signage	Directional	D-7.6	Directional monument - 7.6 sq ft - Non Illuminated - Double Face	← Drive-Up Banking ← Drive-Up ATM ← Customer Parking
8a	Exterior Signage	Directional	D-7.6	Directional monument - 7.6 sq ft - Non Illuminated - Double Face	Do Not Enter
8b	Exterior Signage	Directional	D-7.6	Directional monument - 7.6 sq ft - Non Illuminated - Double Face	(Blank)
9a	Exterior Signage	Directional	D-7.6	Directional monument - 7.6 sq ft - Non Illuminated - Double Face	↑ Drive Up Banking ↑ Drive Up ATM
9b	Exterior Signage	Directional	D-7.6	Directional monument - 7.6 sq ft - Non Illuminated - Double Face	Thank You
10a	Exterior Signage	Directional	D-7.6	Directional monument - 7.6 sq ft - Non Illuminated - Double Face	← Drive-Up Banking ← Drive-Up ATM ← Customer Parking
10b	Exterior Signage	Directional	D-7.6	Directional monument - 7.6 sq ft - Non Illuminated - Double Face	→ Drive-Up Banking → Drive-Up ATM → Customer Parking
11	Exterior Signage	Custom	Custom		Reserved Parking (with disabled parking icon)... This Space. Van Accessible (smaller sign attached below)
12	Exterior Signage	Custom	Custom		Reserved Parking (with disabled parking icon)
13	Exterior Signage	Custom	Custom		ND-1 Night Deposit Plaque. 0'-7"H x 0'-10"W
14	Exterior Signage	Drive Up	DU-B	Drive Up Arrow	
15	Exterior Signage	Drive Up	DU-B	Drive Up Arrow	
16	Exterior Signage	Drive Up	DU-B	Drive Up Arrow	
17	Exterior Signage	Drive Up	DU-C	Drive Up ATM Arrow	
18	Exterior Signage	Drive Up	TC-3-W	Clearance Sign - Non Illuminated	Clearance 11'-0"

19	Exterior Signage	Drive Up	TC-3-W	Clearance Sign - Non Illuminated	Clearance 11'-0"
20	Exterior Signage	Drive Up	TC-3-W	Clearance Sign - Non Illuminated	Clearance 11'-0"
21	ATM Signage	Drive Up ATM	TOP-FS-DU-LED	Drive-Up ATM Universal Topper - fits 750, P90 & 2350 - LED	
22	Electrical Component	Tork Timer	Tork Timer	Tork Timer	DZS200BP
23	Electrical Component	Photo Cell	Photo Cell	Photo Cell	Tork 2107

Site Plan



Sign #:	1
Sign Use:	Exterior Signage
Sign Category:	Ground Signage
Sign Type:	P-50
Description:	Pylon - Illuminated - Double Face
Notes:	



Sign #:	2
Sign Use:	Exterior Signage
Sign Category:	Lettersets
Sign Type:	LIF-WBO-20
Description:	Channel Letters - Illuminated White with Blue Octagon
Notes:	



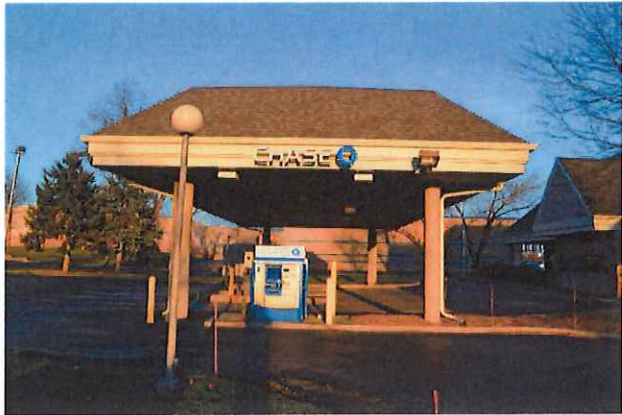
Sign #:	3
Sign Use:	Exterior Signage
Sign Category:	Lettersets
Sign Type:	LIF-WBO-20
Description:	Channel Letters - Illuminated White with Blue Octagon
Notes:	



Sign #:	4
Sign Use:	Exterior Signage
Sign Category:	Lettersets
Sign Type:	LIF-WBO-20
Description:	Channel Letters - Illuminated White with Blue Octagon
Notes:	



Sign #:	5
Sign Use:	Exterior Signage
Sign Category:	Lettersets
Sign Type:	LIF-R-WBO-12
Description:	Raceway - Illuminated - White with Blue Octagon
Notes:	



Sign #:	6a
Sign Use:	Exterior Signage
Sign Category:	Directional
Sign Type:	D-7.6
Description:	Directional monument - 7.6 sq ft - Non Illuminated - Double Face
Notes:	← Drive-Up Banking ← Drive-Up ATM ← Customer Parking



Sign #:	6b
Sign Use:	Exterior Signage
Sign Category:	Directional
Sign Type:	D-7.6
Description:	Directional monument - 7.6 sq ft - Non Illuminated - Double Face
Notes:	→ Drive-Up Banking → Drive-Up ATM → Customer Parking



Sign #:	7a
Sign Use:	Exterior Signage
Sign Category:	Directional
Sign Type:	D-7.6
Description:	Directional monument - 7.6 sq ft - Non Illuminated - Double Face
Notes:	→ Drive-Up Banking → Drive-Up ATM → Customer Parking



Sign #:	7b
Sign Use:	Exterior Signage
Sign Category:	Directional
Sign Type:	D-7.6
Description:	Directional monument - 7.6 sq ft - Non Illuminated - Double Face
Notes:	← Drive-Up Banking ← Drive-Up ATM ← Customer Parking



Sign #:	8a
Sign Use:	Exterior Signage
Sign Category:	Directional
Sign Type:	D-7.6
Description:	Directional monument - 7.6 sq ft - Non Illuminated - Double Face
Notes:	Do Not Enter



Sign #:	8b
Sign Use:	Exterior Signage
Sign Category:	Directional
Sign Type:	D-7.6
Description:	Directional monument - 7.6 sq ft - Non Illuminated - Double Face
Notes:	(Blank)



Sign #:	9a
Sign Use:	Exterior Signage
Sign Category:	Directional
Sign Type:	D-7.6
Description:	Directional monument - 7.6 sq ft - Non Illuminated - Double Face
Notes:	↑ Drive Up Banking ↑ Drive Up ATM



Sign #:	9b
Sign Use:	Exterior Signage
Sign Category:	Directional
Sign Type:	D-7.6
Description:	Directional monument - 7.6 sq ft - Non Illuminated - Double Face
Notes:	Thank You



Sign #:	10a
Sign Use:	Exterior Signage
Sign Category:	Directional
Sign Type:	D-7.6
Description:	Directional monument - 7.6 sq ft - Non Illuminated - Double Face
Notes:	← Drive-Up Banking ← Drive-Up ATM ← Customer Parking



Sign #:	10b
Sign Use:	Exterior Signage
Sign Category:	Directional
Sign Type:	D-7.6
Description:	Directional monument - 7.6 sq ft - Non Illuminated - Double Face
Notes:	→ Drive-Up Banking → Drive-Up ATM → Customer Parking



Sign #:	11
Sign Use:	Exterior Signage
Sign Category:	Custom
Sign Type:	Custom
Description:	
Notes:	Reserved Parking (with disabled parking icon)... This Space. Van Accessible (smaller sign attached below)



Sign #:	12
Sign Use:	Exterior Signage
Sign Category:	Custom
Sign Type:	Custom
Description:	
Notes:	Reserved Parking (with disabled parking icon)



Sign #:	13
Sign Use:	Exterior Signage
Sign Category:	Custom
Sign Type:	Custom
Description:	
Notes:	ND-1 Night Deposit Plaque. 0'-7"H x 0'-10"W



Sign #:	14
Sign Use:	Exterior Signage
Sign Category:	Drive Up
Sign Type:	DU-B
Description:	Drive Up Arrow
Notes:	



Sign #:	15
Sign Use:	Exterior Signage
Sign Category:	Drive Up
Sign Type:	DU-B
Description:	Drive Up Arrow
Notes:	



Sign #:	16
Sign Use:	Exterior Signage
Sign Category:	Drive Up
Sign Type:	DU-B
Description:	Drive Up Arrow
Notes:	



Sign #:	17
Sign Use:	Exterior Signage
Sign Category:	Drive Up
Sign Type:	DU-C
Description:	Drive Up ATM Arrow
Notes:	



Sign #:	18
Sign Use:	Exterior Signage
Sign Category:	Drive Up
Sign Type:	TC-3-W
Description:	Clearance Sign - Non Illuminated
Notes:	Clearance 11'-0"



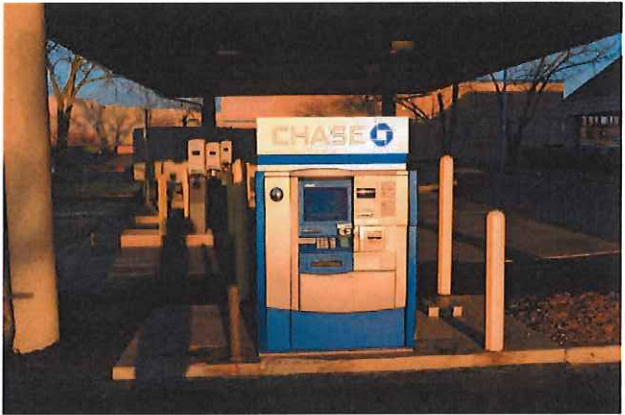
Sign #:	19
Sign Use:	Exterior Signage
Sign Category:	Drive Up
Sign Type:	TC-3-W
Description:	Clearance Sign - Non Illuminated
Notes:	Clearance 11'-0"



Sign #:	20
Sign Use:	Exterior Signage
Sign Category:	Drive Up
Sign Type:	TC-3-W
Description:	Clearance Sign - Non Illuminated
Notes:	Clearance 11'-0"



Sign #:	21
Sign Use:	ATM Signage
Sign Category:	Drive Up ATM
Sign Type:	TOP-FS-DU-LED
Description:	Drive-Up ATM Universal Topper - fits 750, P90 & 2350 - LED
Notes:	



Sign #:	22
Sign Use:	Electrical Component
Sign Category:	Tork Timer
Sign Type:	Tork Timer
Description:	Tork Timer
Notes:	DZS200BP



Sign #:	23
Sign Use:	Electrical Component
Sign Category:	Photo Cell
Sign Type:	Photo Cell
Description:	Photo Cell
Notes:	Tork 2107



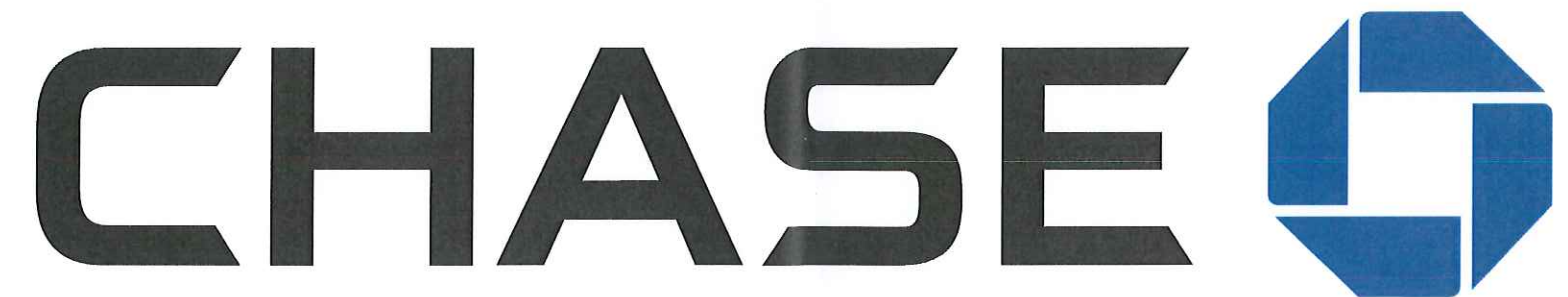


Loc#: 515854 - East Waukesha

2402 E. Moreland Blvd.
Waukesha, WI. 53168



We Brand Your
Places & Spaces

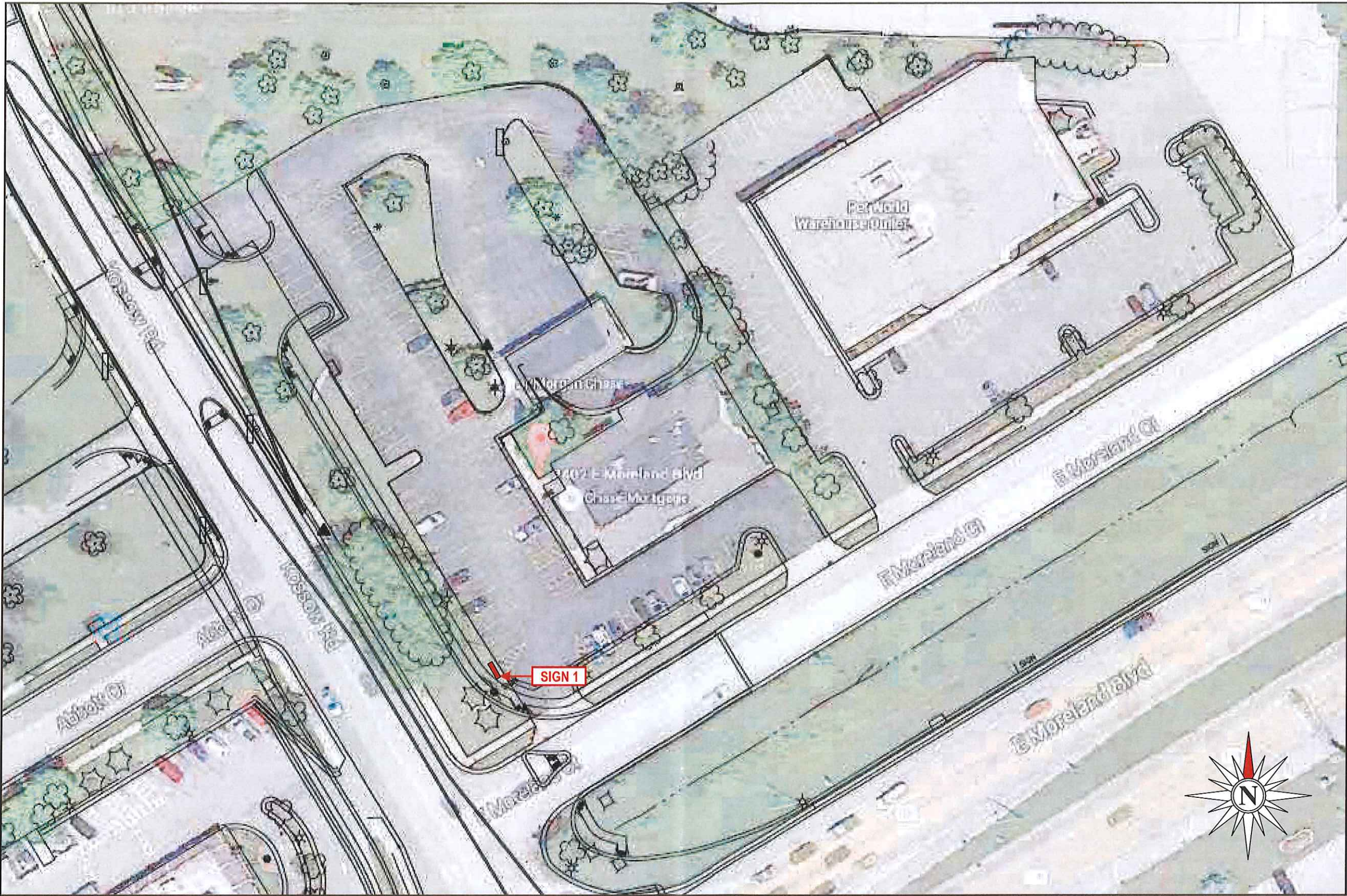


Loc#: 515854 - East Waukesha

2402 E. Moreland Blvd.
Waukesha, WI. 53168



We Brand Your
Places & Spaces



Drawing prepared by:



SITE PLAN

Location: East Waukesha - 2402 E. Moreland Blvd.
Waukesha, WI. 53168
Proj #: 3742
Loc #: 515854
File Path: Active\BANKS\C\Chase Signature\Locations\3742_515854_East Waukesha_WI_Pylon.cdr



Drawing prepared for:

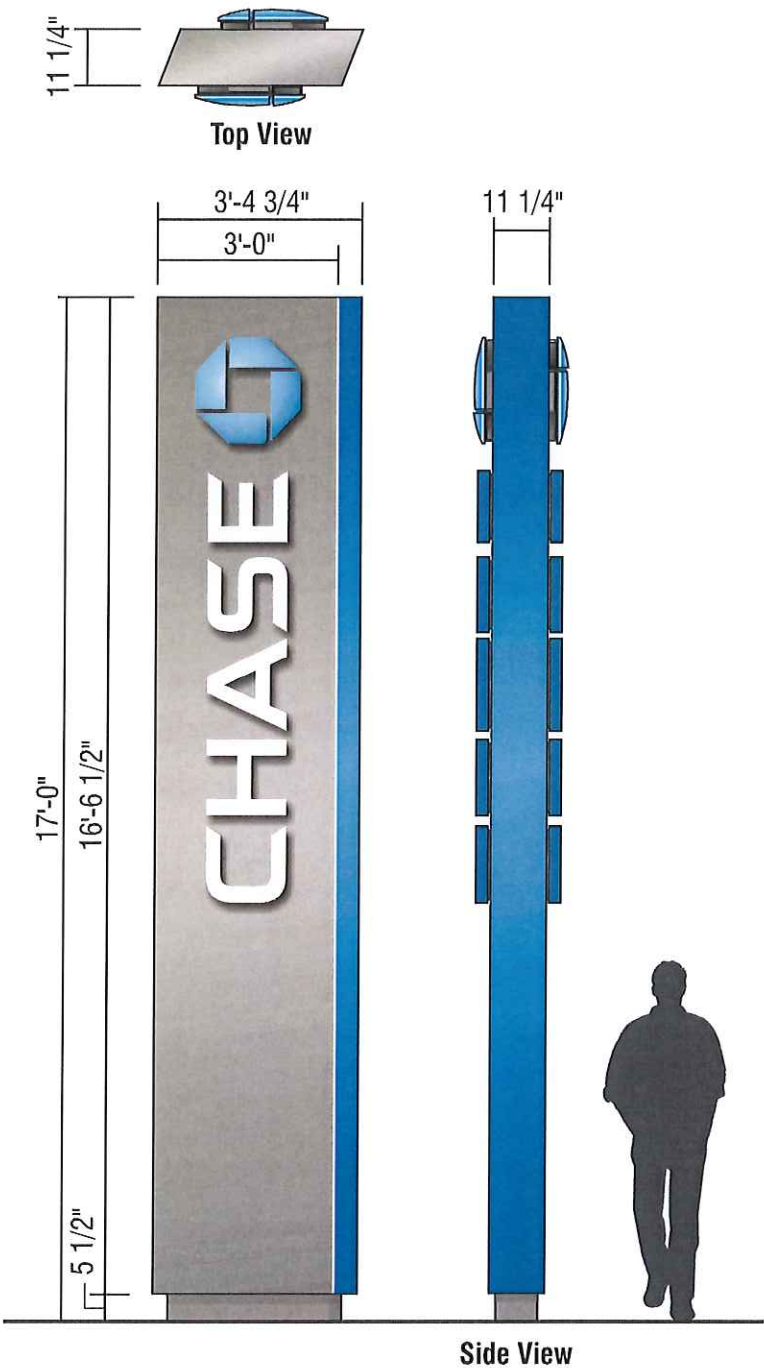
Rev #:	Req#:	Date:	Req. By:	Drawn By:	Revision Description:	Drawings are the exclusive property of ICON. Any unauthorized use or duplication is not permitted.				
Original	238927	09/07/16	KY	KP						
Rev 1	000000	00/00/00	XXX	XXX	Notes					
Rev 2	000000	00/00/00	XXX	XXX						
Rev 3	000000	00/00/00	XXX	XXX						
Rev 4	000000	00/00/00	XXX	XXX						
Rev 5	000000	00/00/00	XXX	XXX						
Rev 6	000000	00/00/00	XXX	XXX						
Rev 7	000000	00/00/00	XXX	XXX						
Rev 8	000000	00/00/00	XXX	XXX						
Rev 9	000000	00/00/00	XXX	XXX						
Rev 10	000000	00/00/00	XXX	XXX						



EXISTING



PROPOSED



RE-INSTALL P50-s PYLON SIGN

Drawing prepared by:



SIGN 1

Location:
East Waukesha - 2402 E. Moreland Blvd.
Waukesha, WI. 53168

Proj #:
3742

Loc #:
515854

File Path:
Active\BANKS\C\Chase Signature\Locations\3742_515854_East Waukesha_WI_Pylon.cdr



Drawing prepared for:

Rev #:	Req#:	Date:	Req. By:	Drawn By:	Revision Description:	Drawings are the exclusive property of ICON,. Any unauthorized use or duplication is not permitted.				
Original	238927	09/07/16	KY	KP	Notes	Rev #:	Req#:	Date:	Req. By:	Drawn By:
Rev 1	000000	00/00/00	XXX	XXX		Rev 7	000000	00/00/00	XXX	XXX
Rev 2	000000	00/00/00	XXX	XXX		Rev 8	000000	00/00/00	XXX	XXX
Rev 3	000000	00/00/00	XXX	XXX		Rev 9	000000	00/00/00	XXX	XXX
Rev 4	000000	00/00/00	XXX	XXX		Rev 10	000000	00/00/00	XXX	XXX
Rev 5	000000	00/00/00	XXX	XXX		Pg.				
Rev 6	000000	00/00/00	XXX	XXX						

