

LEGEND:

- 30.10 = EXISTING SPOT GRADE
- ⊙ = MONITORING WELL
- ⊗ = WATER VALVE
- ⊗ = GAS VALVE
- = POWER POLE
- = GUY WIRE
- ⊠ = TRAFFIC SIGNAL LIGHT
- ⊠ = TRAFFIC SIGNAL CONTROL BOX
- ⊠ = RAILROAD CONTROL BOX
- ⊠ = RAILROAD MANHOLE
- ⊠ = SANITARY MANHOLE
- ⊠ = SANITARY CLEANOUT
- ⊠ = STORM MANHOLE
- ⊠ = GAS MANHOLE
- ⊠ = ELECTRIC MANHOLE
- ⊠ = TELEPHONE MANHOLE
- ⊠ = SIGN
- ⊠ = LIGHT POLE
- ⊠ = CATCH BASINS
- ⊠ = HYDRANT
- = 2'x2' BRICK PILLARS FOR OVERHANG
- = GAS LINE
- = UNDERGROUND ELECTRIC
- = EXISTING WATER
- = EXISTING STORM SEWER
- = EXISTING SANITARY SEWER
- = 100YR FLOODPLAIN DELINEATION
- = EXISTING CONTOURS

- ⊙ = DECIDUOUS TREE
- ⊙ = CONIFEROUS TREE
- ⊙ = GAS LINE

BENCH MARK: 33.35 (City Datum)
Hydrant word "open" located on the NW side of Barstow Street across from Hardee's Restaurant

SURVEYOR'S CERTIFICATE

STATE OF WISCONSIN }
COUNTY OF WAUKESHA } ss. _____

WE, JAHNKE & JAHNKE ASSOCIATES INC., DO HEREBY CERTIFY THAT WE HAVE MADE THIS SURVEY AND THAT THE INFORMATION AS SHOWN ON THE ABOVE PLAT OF SURVEY IS TRUE AND CORRECT REPRESENTATION THEREOF.

John R. Stigler
JOHN R. STIGLER, P.E. REG. NO. S-1820
Dated this 31st day of August, 2016
STIGLER
S-1820
WAUKESHA, WI
LAND SURVEYOR

FOR: MAD ROOSTER RESTAURANT

EXISTING SITE CONDITIONS - PLAT OF SURVEY
PART OF THE NE 1/4 OF
SECTION 3, T 6 N, R 19 E,
CITY OF WAUKESHA, WAUKESHA COUNTY, WISCONSIN.

JAHNKE & JAHNKE ASSOCIATES INC.

PLANNERS & PROFESSIONAL ENGINEERS
711 W. MORELAND BLVD., WAUKESHA, WI 53188
TEL. (262) 542-5797 FAX (262) 542-7698 (E-MAIL: jstigler@jahnkeandjahnke.com)

SCALE: 1" = 30' DATE: AUGUST 31, 2016

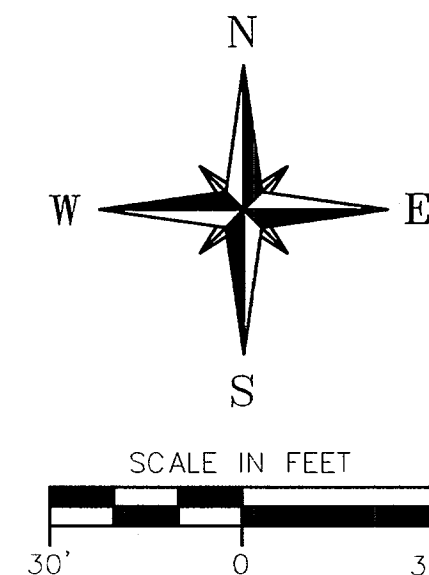
DRAWN BY: D.L.F. CHECKED BY: J.R.S. FILE NO.: WAUKESHA 1187

BOOK: WAUKESHA 167 PG 1-4 JOB: S8510 SHEET 1 OF 6

C-1.0

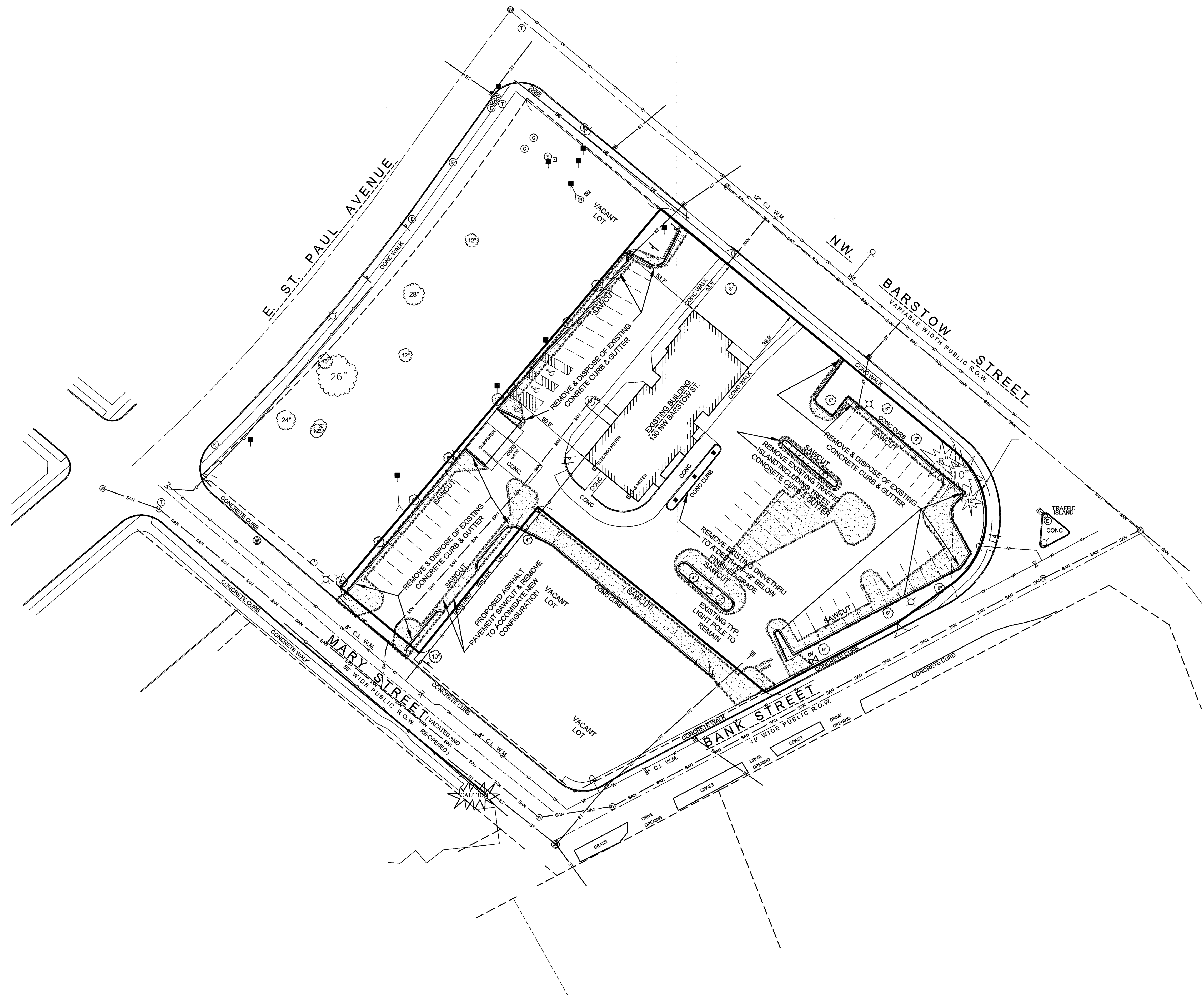
REVISED: OCTOBER 18, 2016
REVISED: SEPTEMBER 16, 2016

FILE NAME: S:\PROJECTS\S8510\dwg\S8510.dwg



LEGEND:

- = WATER VALVE
- = GAS VALVE
- = POWER POLE
- = GUY WIRE
- = TRAFFIC SIGNAL LIGHT
- = TRAFFIC SIGNAL CONTROL BOX
- = RAILROAD CONTROL BOX
- = RAILROAD MANHOLE
- = SANITARY MANHOLE
- = STORM MANHOLE
- = GAS MANHOLE
- = SIGN
- = LIGHT POLE
- = CATCH BASINS
- = HYDRANT
- = 2x2 BRICK PILLARS FOR OVERHANG
- = DECIDUOUS TREE
- = CONIFEROUS TREE
- = EXISTING GAS LINE
- = EXISTING UNDERGROUND ELECTRIC
- = EXISTING WATER
- = EXISTING STORM SEWER
- = EXISTING SANITARY SEWER
- = SAWCUT
- = GAS LINE



FOR: MAD ROOSTER RESTAURANT
DEMOLITION PLAN
PART OF THE NE 1/4 OF
SECTION 3, T 6 N, R 19 E,
CITY OF WAUKESHA, WAUKESHA COUNTY, WISCONSIN.

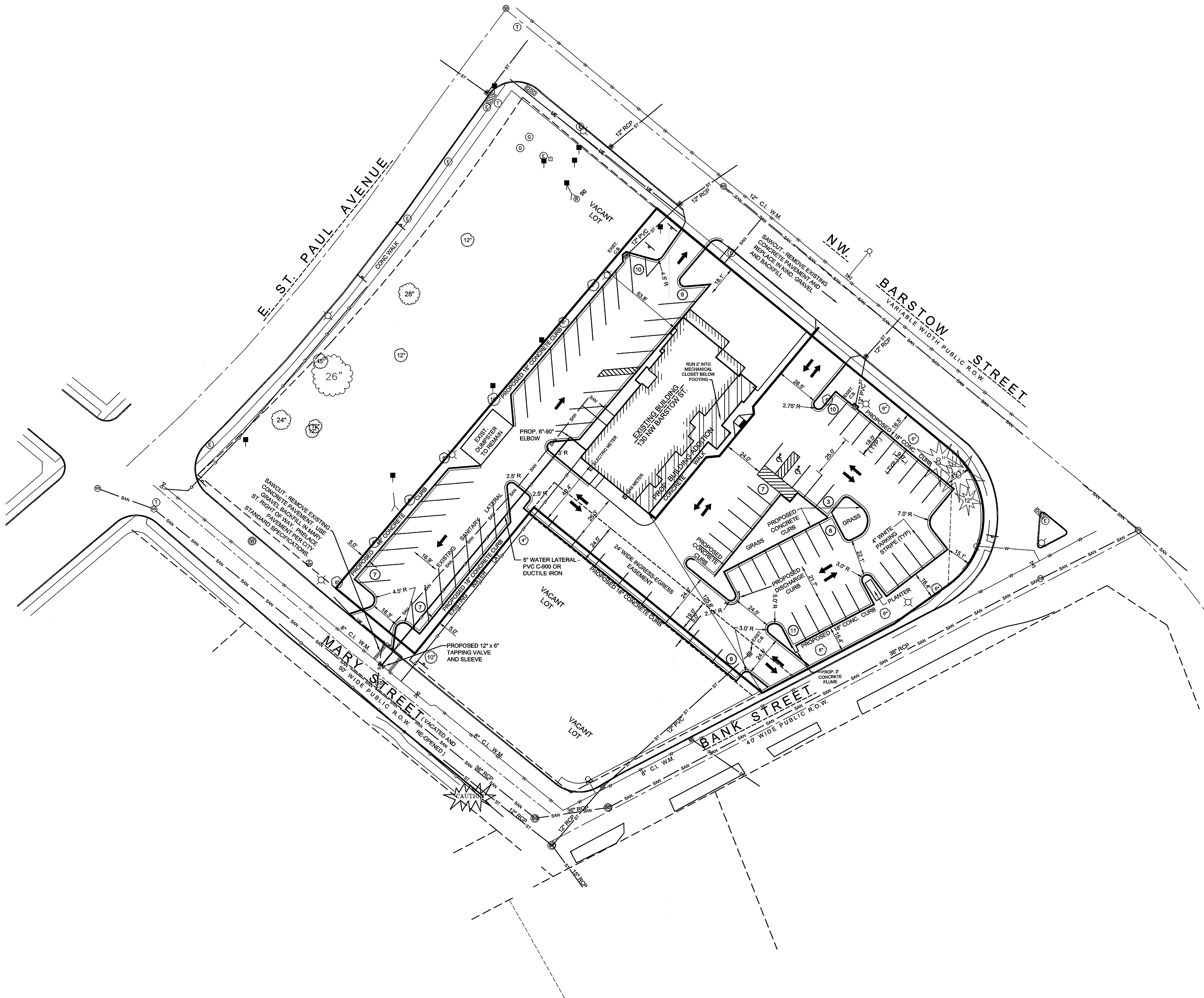
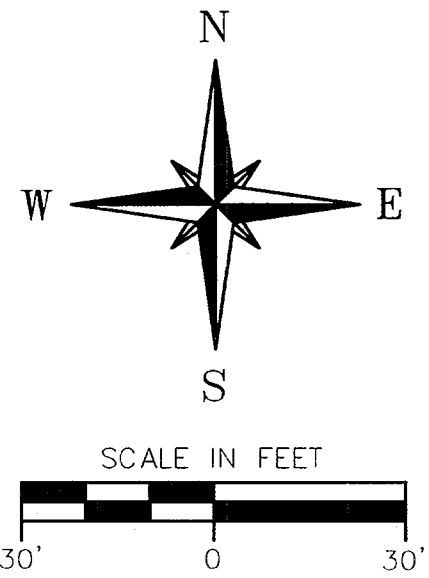
JAHNKE & JAHNKE ASSOCIATES INC.
PLANNERS & PROFESSIONAL ENGINEERS
711 W. MORELAND BLVD., WAUKESHA, WI. 53188
TEL.No.(262)542-5797 FAX(262)542-7698 (E-MAIL jstigler@jahnkeandjahnke.com)

C-2.0

REVISED: OCTOBER 18, 2016
REVISED: SEPTEMBER 16, 2016

SCALE: 1" = 30'	DATE: AUGUST 31, 2016
DRAWN BY: D.L.F.	CHECKED BY: J.R.S.
BOOK: WAUKESHA 167 PG 1-4	JOB: S8510
FILE NO.: WAUKESHA 1187	SHEET 2 OF 6

FILE NAME: S:\PROJECTS\S8510\dwg\S8510.dwg



- LEGEND:**
- = WATER VALVE
 - = GAS VALVE
 - = POWER POLE
 - = GUY WIRE
 - = TRAFFIC SIGNAL LIGHT
 - = TRAFFIC SIGNAL CONTROL BOX
 - = RAILROAD CONTROL BOX
 - = RAILROAD MANHOLE
 - = SANITARY MANHOLE
 - = STORM MANHOLE
 - = GAS MANHOLE
 - = ELECTRIC MANHOLE
 - = TELEPHONE MANHOLE
 - = SIGN
 - = LIGHT POLE
 - = CATCH BASINS
 - = HYDRANT
 - = GAS LINE
 - = UNDERGROUND ELECTRIC
 - = WATER MAIN / LATERAL
 - = EXISTING STORM SEWER
 - = EXISTING SANITARY SEWER
 - = PROPOSED SAWCUT
 - = DECIDUOUS TREE
 - = CONIFEROUS TREE
 - = TRAFFIC ARROWS
 - = GAS LINE

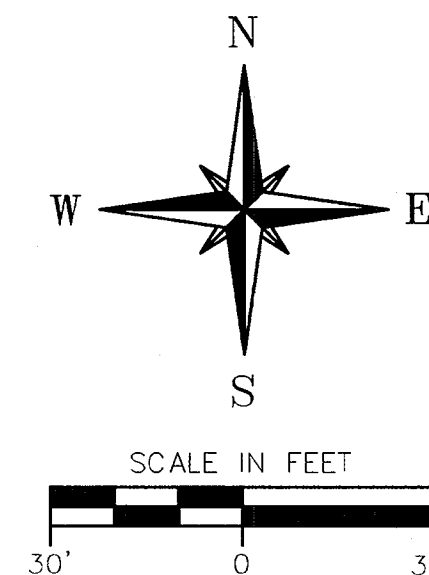
BENCH MARK: 33.35 (City Datum)
Hydrant word "open" located on the NW side of Barstow Street across from Hardee's Restaurant



FOR: MAD ROOSTER RESTAURANT	
PROPOSED SITE PLAN	
PART OF THE NE 1/4 OF	
SECTION 3, T 6 N, R 19 E,	
CITY OF WAUKESHA, WAUKESHA COUNTY, WISCONSIN.	
JAHNKE & JAHNKE ASSOCIATES INC.	
PLANNERS & PROFESSIONAL ENGINEERS	
711 W. MORELAND BLVD., WAUKESHA, WI. 53188	
TEL.No.(262)542-5797 FAX(262)542-7698 (E-MAIL jstigler@jahnkeandjahnke.com)	
SCALE: 1" = 30'	DATE: AUGUST 31, 2016
DRAWN BY: D.L.F.	CHECKED BY: J.R.S.
BOOK: WAUKESHA 167 PG 1-4	FILE NO.: WAUKESHA 1187
JOB: S8510	SHEET 3 OF 6

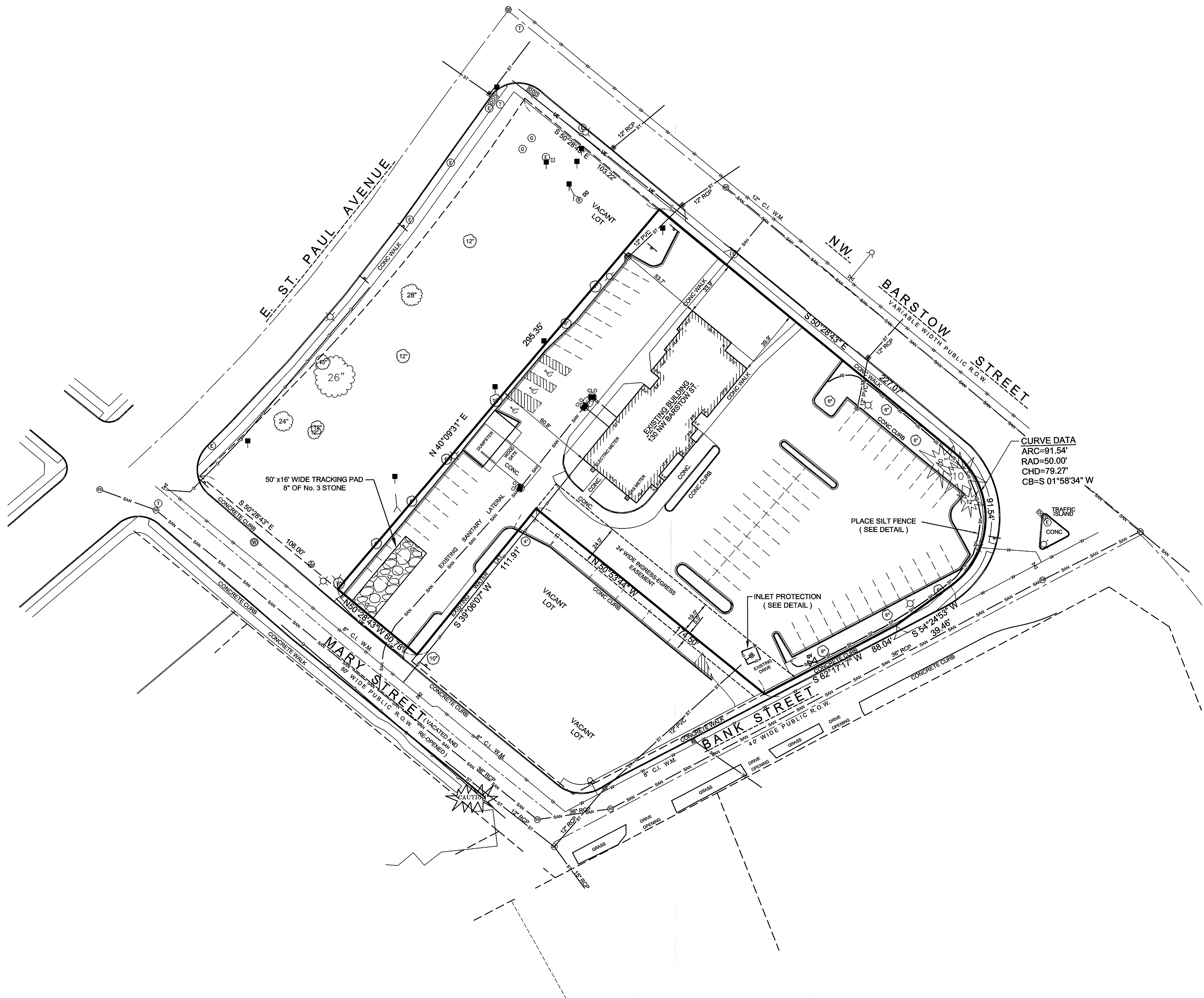
C-3.0
REVISED: OCTOBER 18, 2016
REVISED: SEPTEMBER 16, 2016

FILE NAME: S:\PROJECTS\S8510.dwg\S8510.dwg



LEGEND:

- = MONITORING WELL
- = WATER VALVE
- = GAS VALVE
- = POWER POLE
- = GUY WIRE
- = TRAFFIC SIGNAL LIGHT
- = TRAFFIC SIGNAL CONTROL BOX
- = RAILROAD CONTROL BOX
- = RAILROAD MANHOLE
- = SANITARY MANHOLE
- = SANITARY CLEANOUT
- = STORM MANHOLE
- = GAS MANHOLE
- = ELECTRIC MANHOLE
- = TELEPHONE MANHOLE
- = SIGN
- = LIGHT POLE
- = CATCH BASINS
- = HYDRANT
- = 2x2 BRICK PILLARS FOR OVERHANG
- = GAS LINE
- = UNDERGROUND ELECTRIC
- = EXISTING WATER
- = EXISTING STORM SEWER
- = EXISTING SANITARY SEWER
- = DECIDUOUS TREE
- = CONIFEROUS TREE
- = CAUTION GAS LINE



FOR: MAD ROOSTER RESTAURANT
EROSION CONTROL PLAN
PART OF THE NE 1/4 OF
SECTION 3, T 6 N, R 19 E,
CITY OF WAUKESHA, WAUKESHA COUNTY, WISCONSIN.

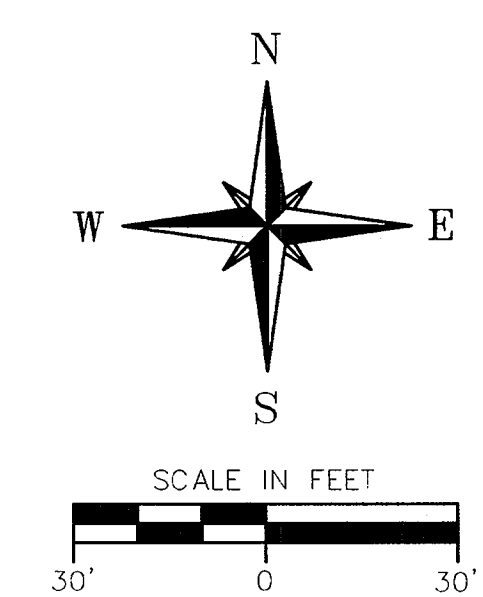
JAHNKE & JAHNKE ASSOCIATES INC.
PLANNERS & PROFESSIONAL ENGINEERS
711 W. MORELAND BLVD., WAUKESHA, WI. 53188
TEL.No.(262)542-5797 FAX(262)542-7698 (E-MAIL jstigler@jahnkeandjahnke.com)

C-4.0

REVISED: OCTOBER 18, 2016
REVISED: SEPTEMBER 16, 2016

SCALE: 1" = 30'	DATE: AUGUST 31, 2016
DRAWN BY: D.L.F.	CHECKED BY: J.R.S.
BOOK: WAUKESHA 167 PG 1-4	JOB: S8510
FILE NO.: WAUKESHA 1187	SHEET 4 OF 6

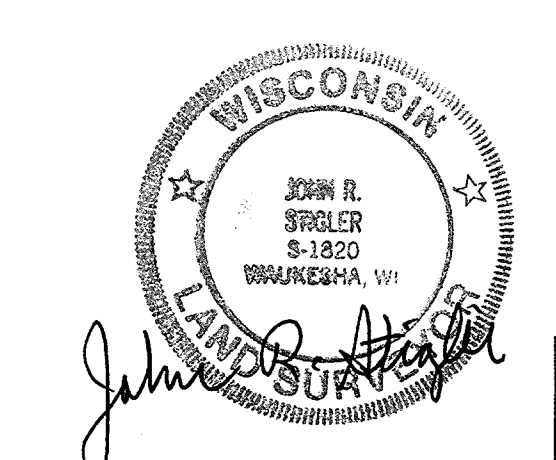
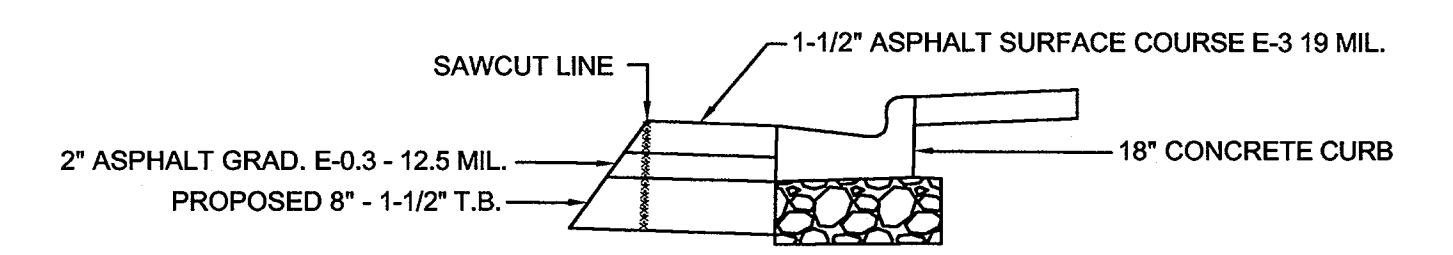
FILE NAME: S:\PROJECTS\S8510.dwg\S8510.dwg



- LEGEND:
- = EXISTING SPOT GRADE
 - = MONITORING WELL
 - = WATER VALVE
 - = GAS VALVE
 - = POWER POLE
 - = GUY WIRE
 - = TRAFFIC SIGNAL LIGHT
 - = TRAFFIC SIGNAL CONTROL BOX
 - = RAILROAD CONTROL BOX
 - = RAILROAD MANHOLE
 - = SANITARY MANHOLE
 - = SANITARY CLEANOUT
 - = STORM MANHOLE
 - = GAS MANHOLE
 - = ELECTRIC MANHOLE
 - = TELEPHONE MANHOLE
 - = SIGN
 - = LIGHT POLE
 - = CATCH BASINS
 - = HYDRANT
 - = 2'x2' BRICK PILLARS FOR OVERHANG
 - = GAS LINE
 - = UNDERGROUND ELECTRIC
 - = EXISTING WATER
 - = EXISTING STORM SEWER
 - = EXISTING SANITARY SEWER
 - = EXISTING CONTOURS
 - = PROPOSED 1' INTERVAL CONTOURS
 - = DECIDUOUS TREE
 - = CONIFEROUS TREE
 - = GAS LINE

BENCH MARK: 33.35 (City Datum)
Hydrant word "open" located on the NW side of
Barstow Street across from Hardee's Restaurant

DETAIL



FOR: MAD ROOSTER RESTAURANT

GRADING PLAN
PART OF THE NE 1/4 OF
SECTION 3, T 6 N, R 19 E,
CITY OF WAUKESHA, WAUKESHA COUNTY, WISCONSIN.

JAHNKE & JAHNKE ASSOCIATES INC.
PLANNERS & PROFESSIONAL ENGINEERS
711 W. MORELAND BLVD., WAUKESHA, WI. 53188
TEL.No.(262)542-5797 FAX(262)542-7698 (E-MAIL jstigler@jahnkeandjahnke.com)

SCALE: 1" = 30'	DATE: AUGUST 31, 2016
DRAWN BY: D.L.F.	CHECKED BY: J.R.S.
BOOK: WAUKESHA 167 PG 1-4	JOB: S8510
SHEET 5 OF 6	

C-5.0

REVISED: OCTOBER 18, 2016
REVISED: SEPTEMBER 16, 2016

FILE NAME: S:\PROJECTS\S8510\dwg\S8510.dwg

PAVING PLAN DETAILS

