



# Waukesha Water Utility

SERVING WAUKESHA SINCE 1886

115 DELAFIELD STREET  
WAUKESHA, WI 53188-3615

Telephone: (262) 521-5272 • Fax: (262) 521-5265 • E-mail: [contactus@waukesha-water.com](mailto:contactus@waukesha-water.com)

## MEMORANDUM

Date: June 16, 2017

To: Dan Duchniak, P.E.

From: Chris Walter, P.E.

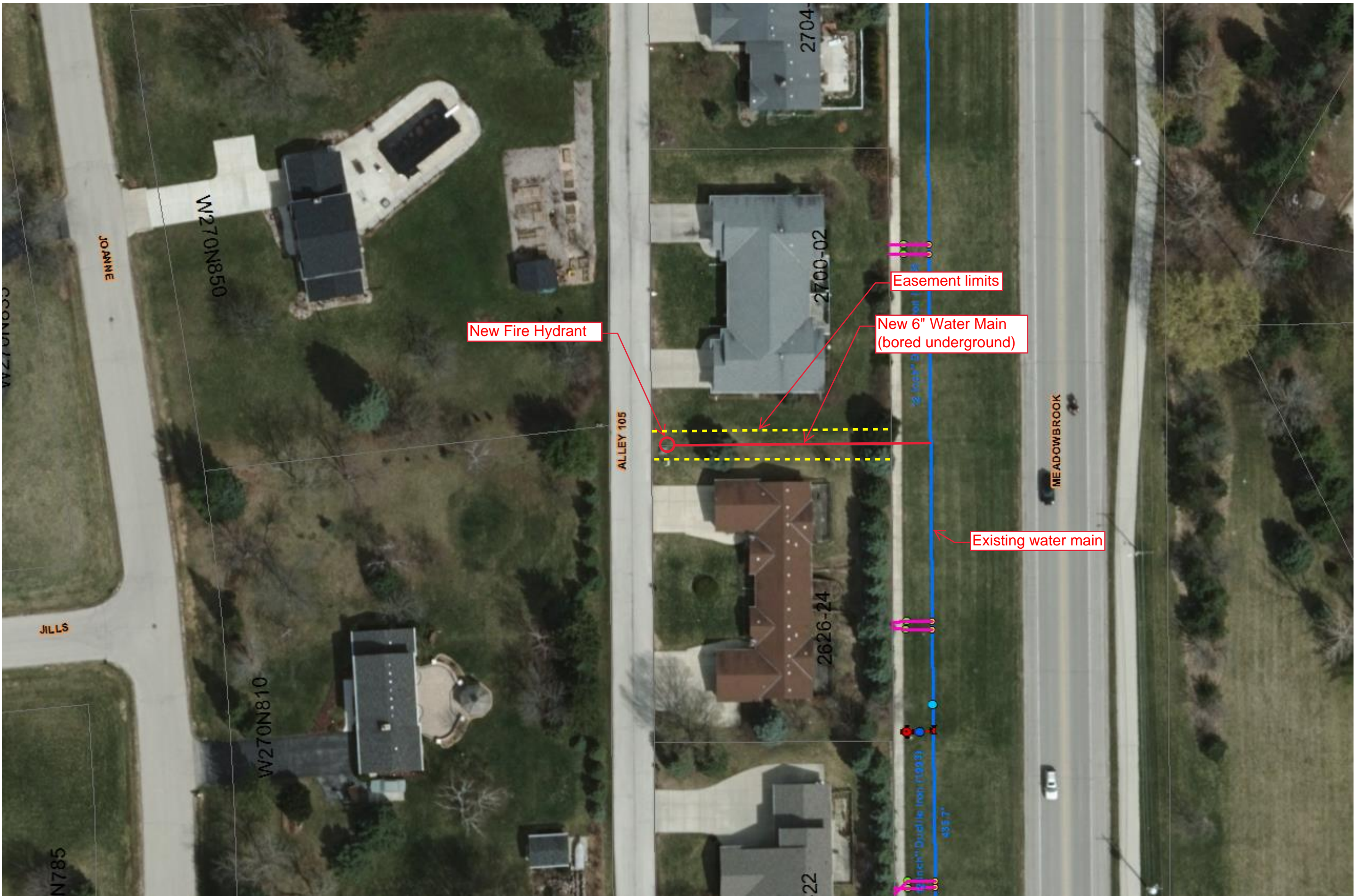
Re: 2624-2626 and 2700-2702 Meadowbrook Road – Water Main Easement

Waukesha Water Utility is requesting a 20-foot wide water main easement which includes two (2) 10-foot easements from adjacent property owners. The Fire Department has asked the utility to install a new hydrant in the alley fronting the properties. They are making this request due to limited access through the backyards during winter conditions. The easement will allow us to extend a 6-inch hydrant lead by means of underground boring, from the water main in Meadowbrook. The easements have been signed and accepted by both property owners. Following Commission approval, City signatures will be obtained and the document recorded with Waukesha County. The water main will be centered within the 20-foot easement and will not conflict with the any existing utilities.

A layout of the easement location is included, along with an exhibit for each property showing their respective 10-foot easement.

**Recommended Motion #1:** Move to approve 10-foot wide exclusive water main easement at 2624-2626 Meadowbrook Road at no cost to the Utility.

**Recommended Motion #2:** Move to approve 10-foot wide exclusive water main easement at 2700-2702 Meadowbrook Road at no cost to the Utility.

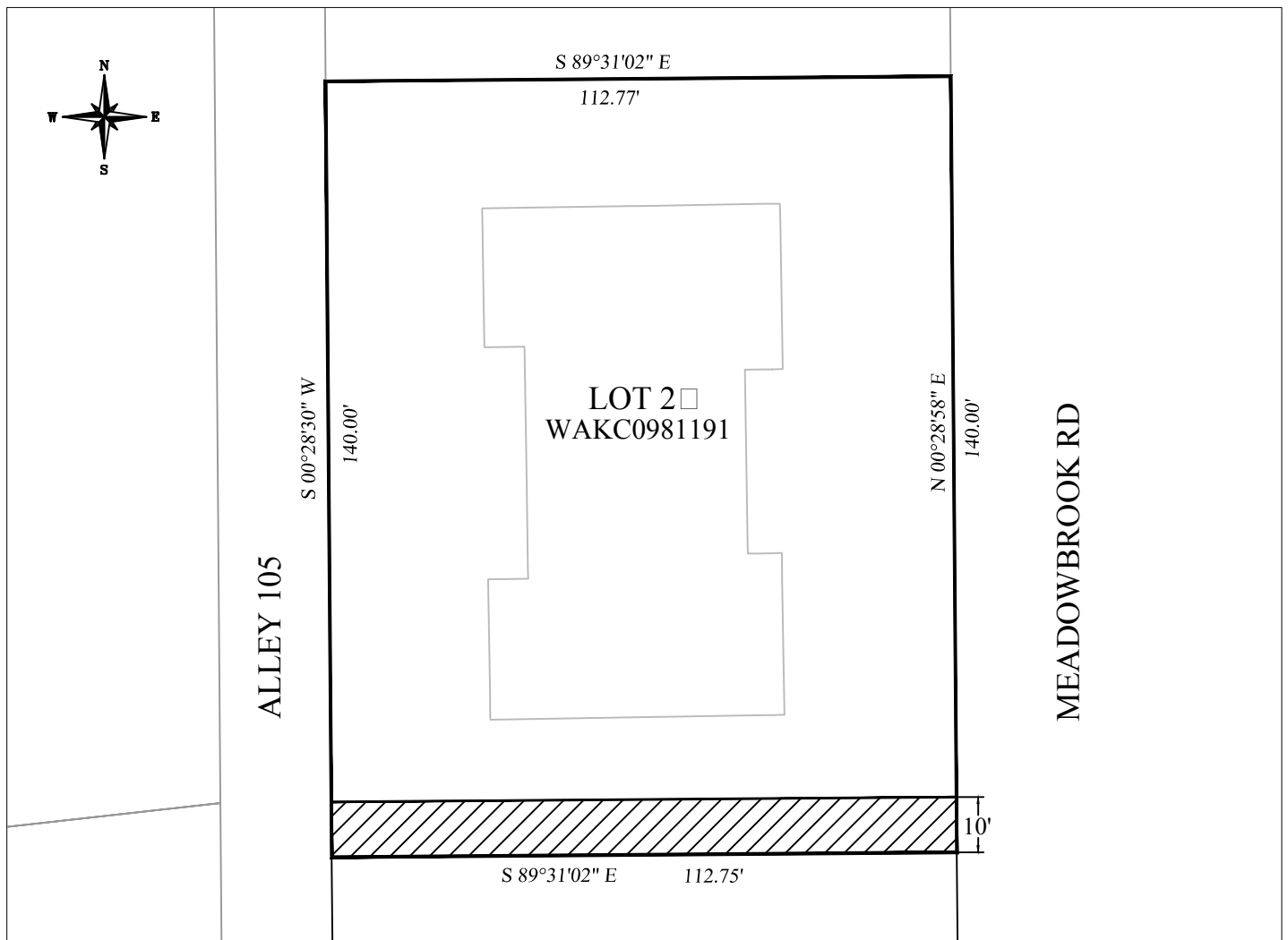


# EXHIBIT "B"

IT IS INTENDED BY THIS CONVEYANCE TO GRANT AN EXCLUSIVE EASEMENT FOR MAINTENANCE OF A WATER MAIN & HYDRANT TO THE WAUKESHA WATER UTILITY, CITY OF WAUKESHA, WISCONSIN.

BEING A PART OF THE SOUTHEAST 1/4 OF THE NORTHEAST 1/4 OF SECTION 30, TOWN 7 NORTH, RANGE 19 EAST, LOT 2 OF A PLAT KNOWN AS MEADOWBROOK HEIGHTS, CITY OF WAUKESHA, WAUKESHA COUNTY, WISCONSIN, DESCRIBED AS FOLLOWS:

A 10' WIDE UTILITY EASEMENT PARALLELING THE SOUTH LOT LINE OF LOT 2 WHICH IS KNOWN TO HAVE A BEARING OF SOUTH 89°31'02" EAST AND A LENGTH OF 112.75'



# EXHIBIT "B"

IT IS INTENDED BY THIS CONVEYANCE TO GRANT AN EXCLUSIVE EASEMENT FOR MAINTENANCE OF A WATER MAIN & HYDRANT TO THE WAUKESHA WATER UTILITY, CITY OF WAUKESHA, WISCONSIN.

BEING A PART OF THE SOUTHEAST 1/4 OF THE NORTHEAST 1/4 OF SECTION 30, TOWN 7 NORTH, RANGE 19 EAST, LOT 27 OF A PLAT KNOWN AS MEADOWBROOK HEIGHTS, CITY OF WAUKESHA, WAUKESHA COUNTY, WISCONSIN, DESCRIBED AS FOLLOWS:

A 10' WIDE UTILITY EASEMENT PARALLELING THE NORTH LOT LINE OF LOT 27 WHICH IS KNOW TO HAVE A BEARING OF SOUTH 89°31'02" EAST AND A LENGTH OF 112.75'

