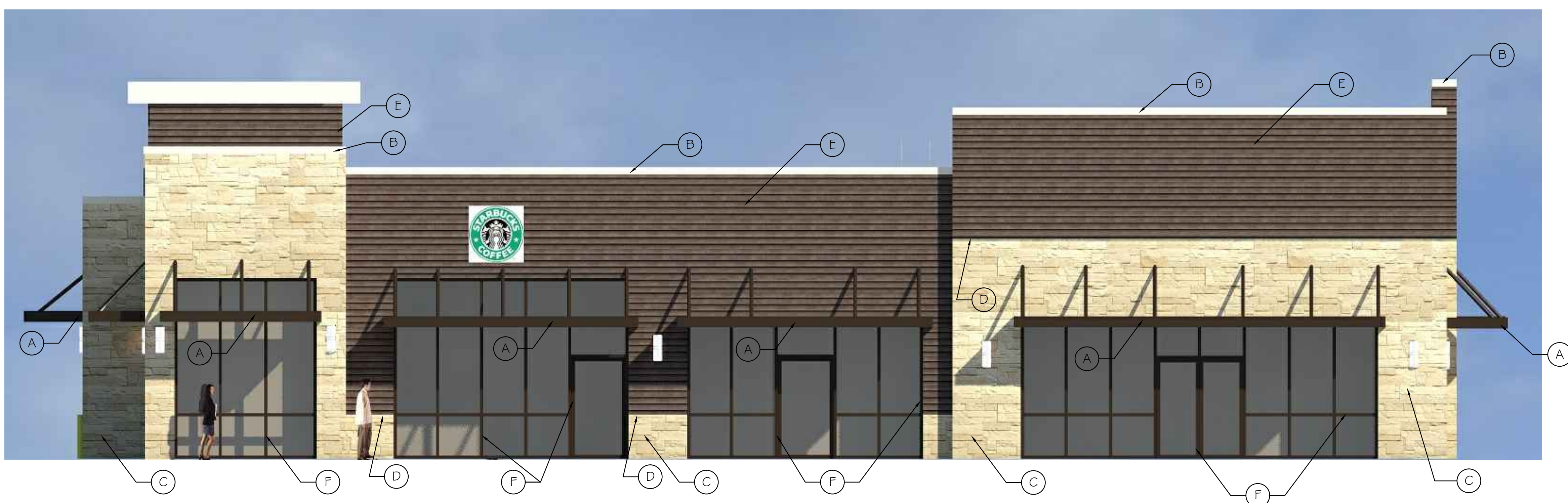




**NORTH (SIDE) ELEVATION**  
SCALE: N.T.S. 2  
A3.1R

- MATERIALS LEGEND:**
- (A) ALUMINUM AWNING. COLOR: DARK BRONZE.
  - (B) PREFINISHED METAL COPING. PAC-CLAD, COLOR: SANDSTONE
  - (C) THINSET STONE. BORAL COUNTRY LEDGESTONE, COLOR: CARAMEL.
  - (D) LIMESTONE BAND.
  - (E) SIDING. LP BUILDING PRODUCTS, SMARTSIDE TRIM AND SIDING. FINISH COLOR: MATCH DIAMOND KOTE, COLOR: CHOCOLATE.
  - (F) ANODIZED ALUMINUM STOREFRONT FRAME. EQUAL TO KAWNEER, COLOR: DARK BRONZE. ALL GLAZING TO BE CLEAR, U.N.O. FOR STOREFRONT/WINDOW ELEVATIONS.



**WEST (FRONT) ELEVATION**  
SCALE: N.T.S. 1  
A3.1R

**PRELIMINARY**  
NOT FOR CONSTRUCTION

© 2018  
This print is the  
sole property of  
RMA Architects, Inc.  
Any reproduction,  
copying, or use is  
strictly prohibited  
without written  
permission.

**RMA**  
ARCHITECTS

1050 SOUTH GRIDER STREET  
APPLETON, WISCONSIN 54914  
PHONE: 920-364-9850

PROJECT FOR ALLIANCE DEVELOPMENT:  
**RETAIL DEVELOPMENT**  
LES PAUL PARKWAY / S.T.H. 164  
WAUKESHA, WISCONSIN

**Alliance**  
NT

REVISIONS

DRAWN BY  
TPH/LAK  
CHECKED BY  
TFM

DATE  
11/2/18

PROJECT NO.  
185016

**A3.1R**