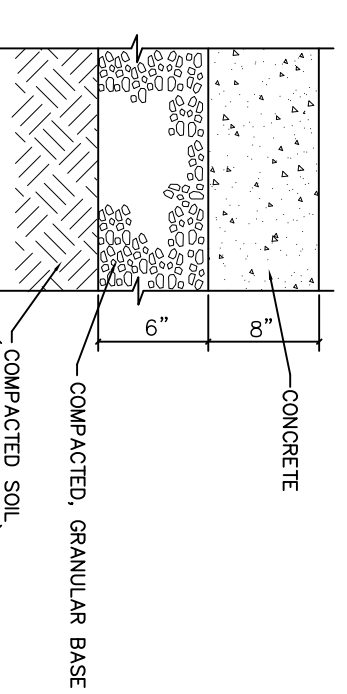
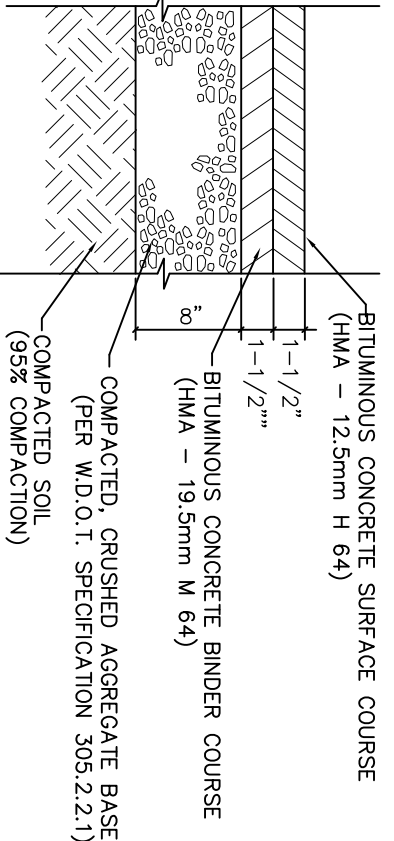


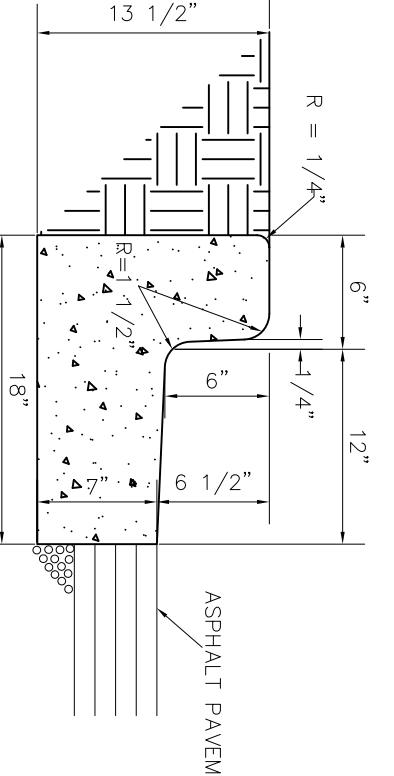
**HEAVY DUTY ASPHALT PAVEMENT
(TRUCK TRAFFIC AREA)**
NOT TO SCALE



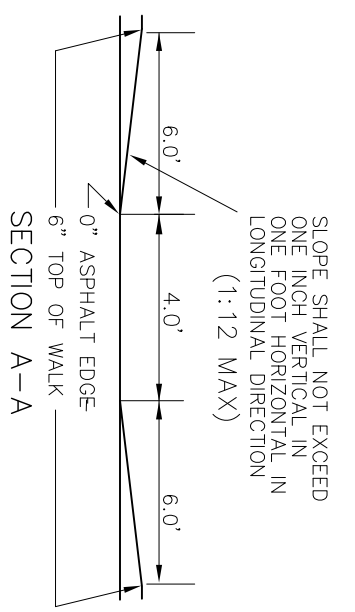
**CONCRETE PAVEMENT
(LOADING DOCKS)**
NOT TO SCALE



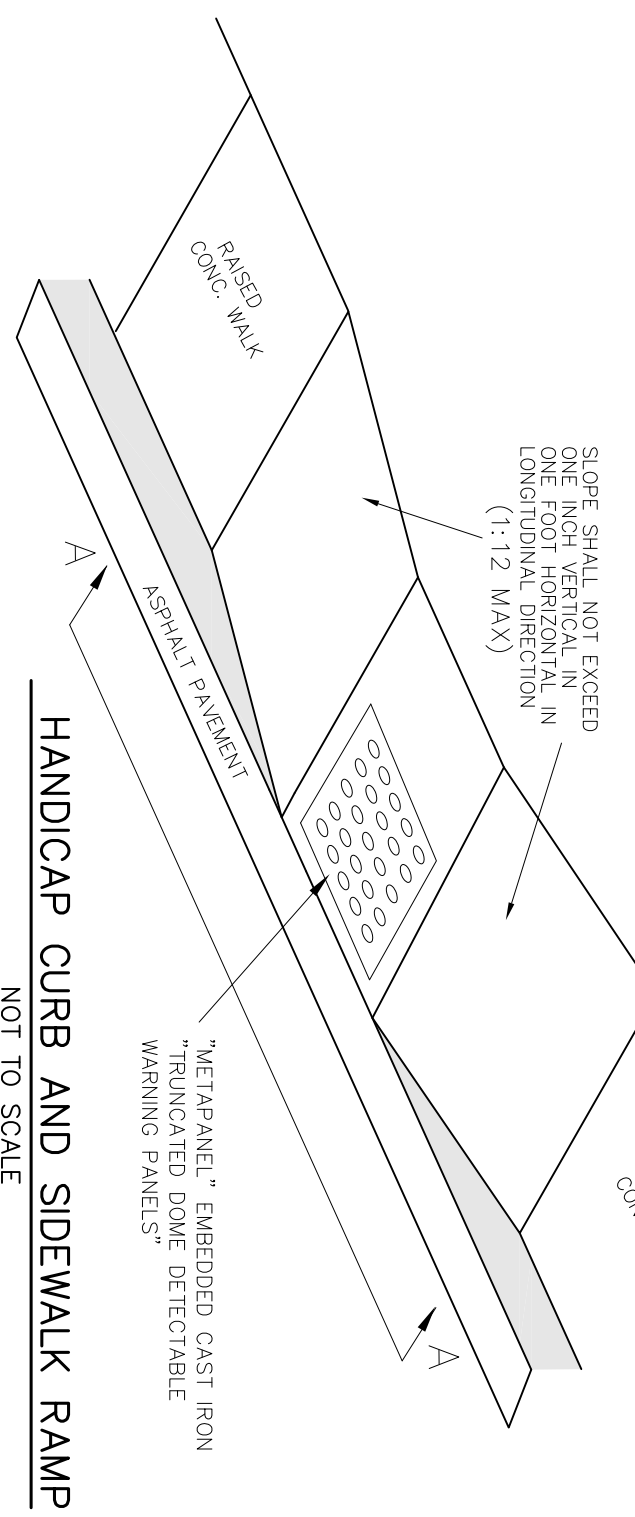
**STANDARD ASPHALT PAVEMENT
(PARKING TRAFFIC AREA)**
NOT TO SCALE



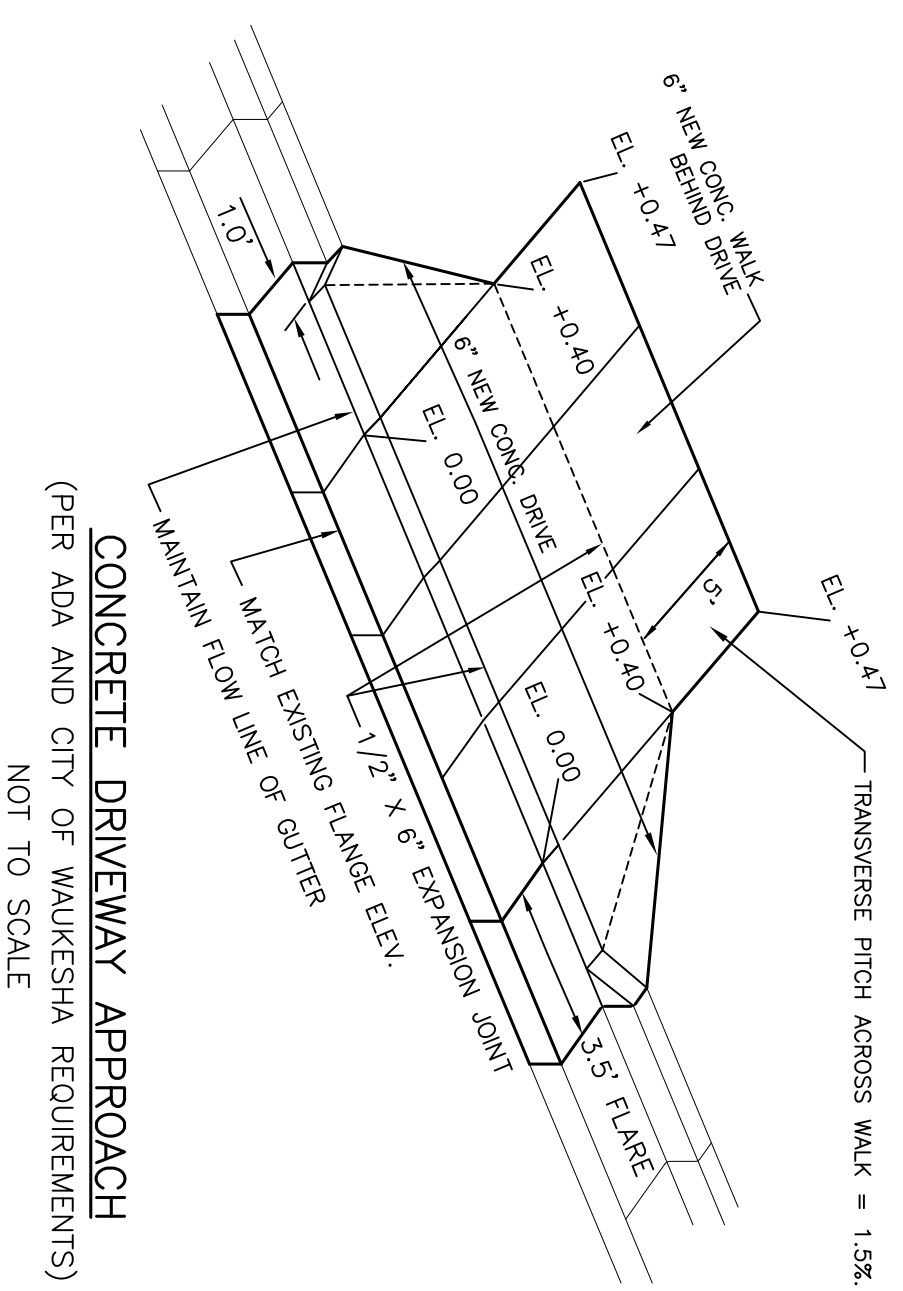
CONCRETE CURB DETAIL
NOT TO SCALE



RAISED CONCRETE WALK WITH INTEGRAL CURB
NOT TO SCALE



HANDICAP CURB AND SIDEWALK RAMP
NOT TO SCALE



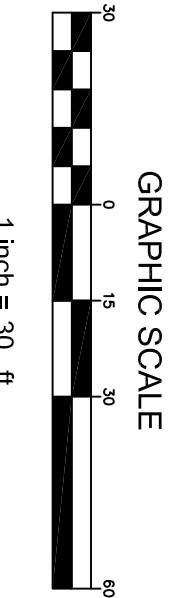
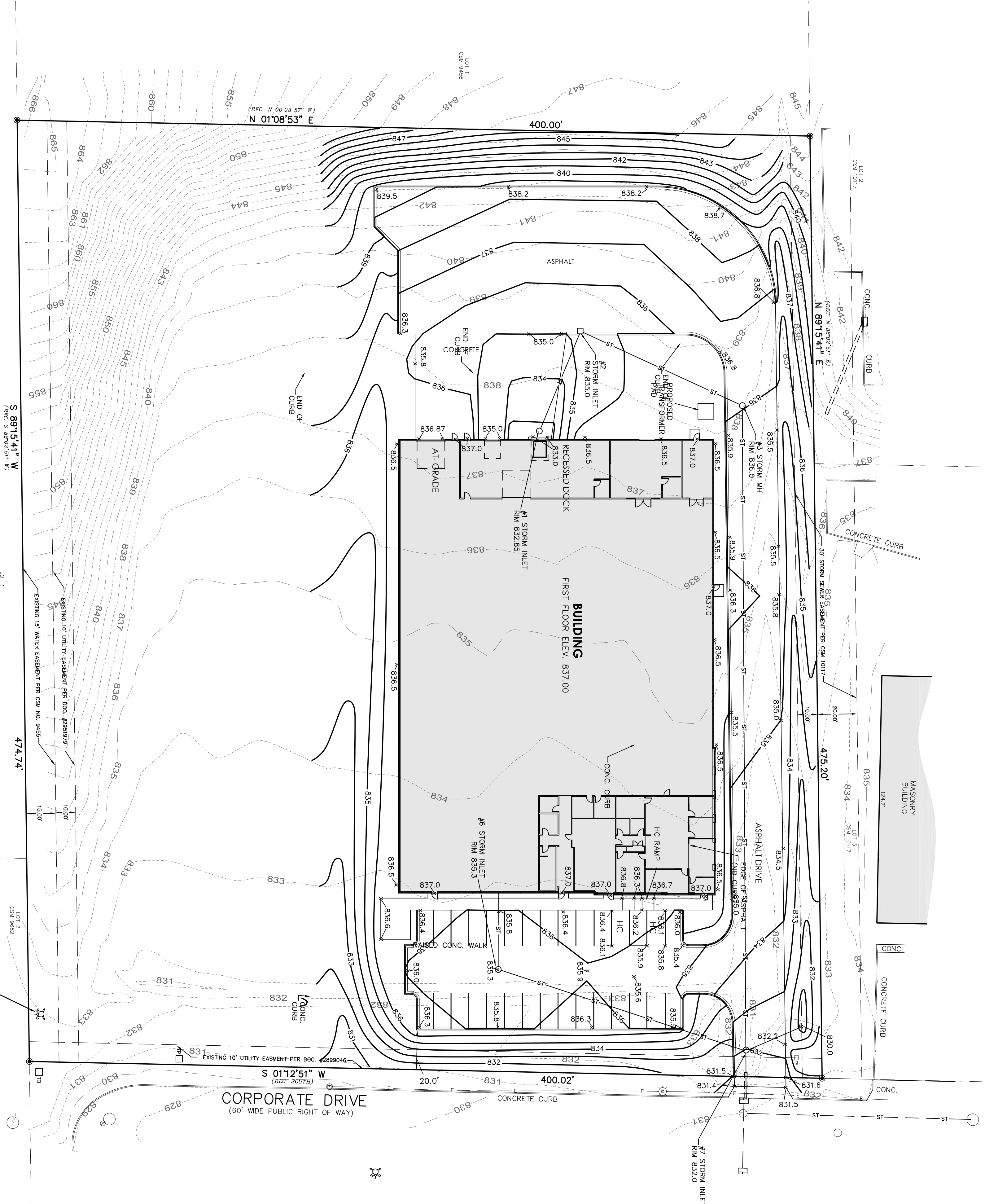
CONCRETE DRIVEWAY APPROACH
(PER ADA AND CITY OF WAUKESHA REQUIREMENTS)
NOT TO SCALE

LEGEND

- 841 --- EXISTING CONTOUR
- 835 --- PROPOSED CONTOUR
- x 836.5 --- PROPOSED ELEVATION
- ST --- EXISTING STORM SEWER
- ST --- PROPOSED STORM SEWER
- ST --- PROPOSED SALT FENCE

- NOTES:**
- GRADES ALONG THE CURB OR RAISED WALK ARE AT THE BOTTOM OF CURB OR WALK.
 - DISTURBED AREA = 120,000 S.F. (2.75 ACRES)
 - STORM WATER MANAGEMENT IS PROVIDED BY A REGIONAL OFF SITE STORM WATER POND.
 - CURRENT CITY STANDARD SPECIFICATIONS SHALL BE FOLLOWED FOR ALL WORK IN THE PUBLIC RIGHT OF WAY.

- SITE AREAS:**
- PROPERTY AREA = 183,895 S.F. (4.159 ACRES)
 - BUILDING FOOTPRINT = 36,546 S.F.
 - PARKING = 36,008 S.F.
 - TOTAL IMPERVIOUS AREA = 74,552 S.F. (1.711 ACRES)
 - GREEN SPACE = 115,333 (2.648 ACRES) 60.7%



SITE GRADING PLAN

C1.0