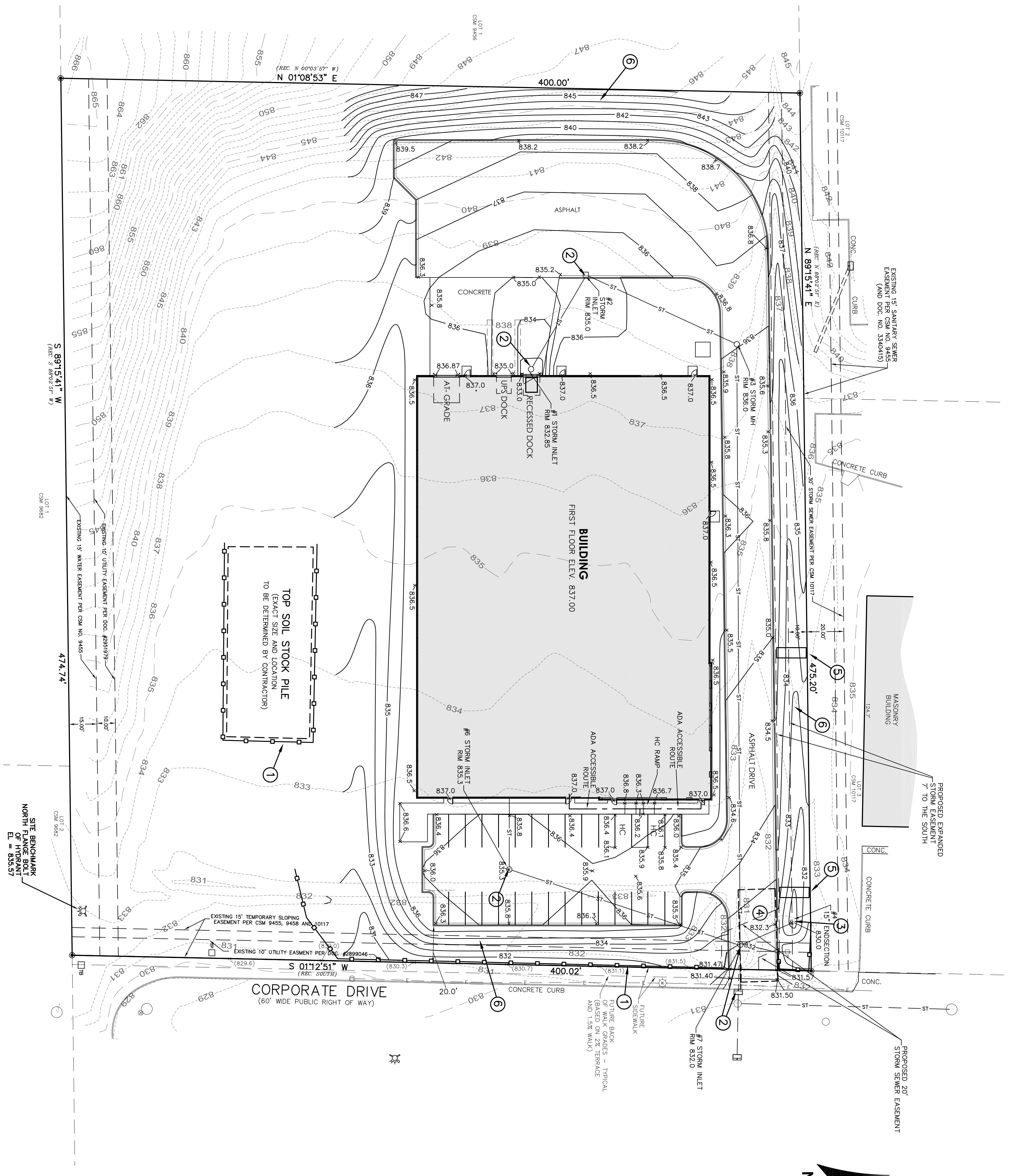


LEGEND

- EXISTING CONTOUR
- PROPOSED CONTOUR
- PROPOSED ELEVATION
- EXISTING STORM SEWER
- PROPOSED STORM SEWER
- PROPOSED SILT FENCE



TEMPORARY STABILIZATION METHODS

TEMPORARY SEEDING: DURING WINTER SEASON (MAY 2 - OCTOBER 31) TEMPORARY SEEDING SHALL BE USED FOR TEMPORARY STABILIZATION DURING THE CONSTRUCTION PERIOD.

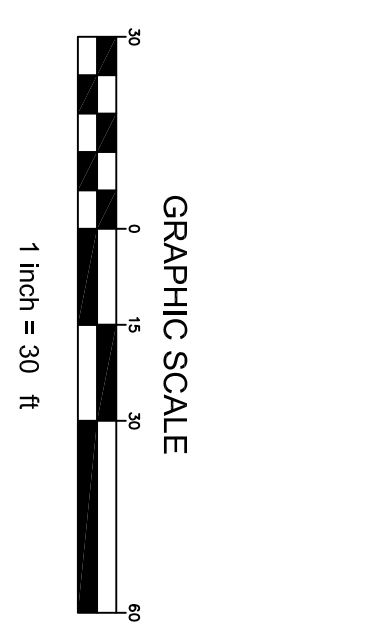
Species	Lbs./Acres	Percent Fertility
Cereal Rye	131	97
Winter Wheat	97	97
Fall Seeding	80*	97

EROSION MATTING

INSTALL EROSION MATTING PER WDR TECHNICAL STANDARD 1096. EROSION MATTING SHALL BE INSTALLED AND MAINTAINED THROUGHOUT THE CONSTRUCTION PERIOD.

WINTER CONDITIONS

CONTRACTOR TO PROVIDE EROSION CONTROL PRACTICES PER WDR TECHNICAL STANDARD 1096. EROSION CONTROL PRACTICES SHALL BE MAINTAINED THROUGHOUT THE CONSTRUCTION PERIOD.



- EROSION CONTROL PRACTICES SCHEDULE**
1. SILT FENCE
 2. INLET GRATE SCREEN
 3. OUTLET PROTECTION
 4. CONSTRUCTION EXIT
 5. HAYBALE DITCH CHECK
 6. EROSION MATTING

EROSION CONTROL PLAN

C4.0



C/E NO.: 18414
JANUARY 21, 2019