

**RMA**  
ARCHITECTS

10150 SOUTH GRIDER STREET  
APPLETON, WISCONSIN 54914  
PHONE: 920-364-9850

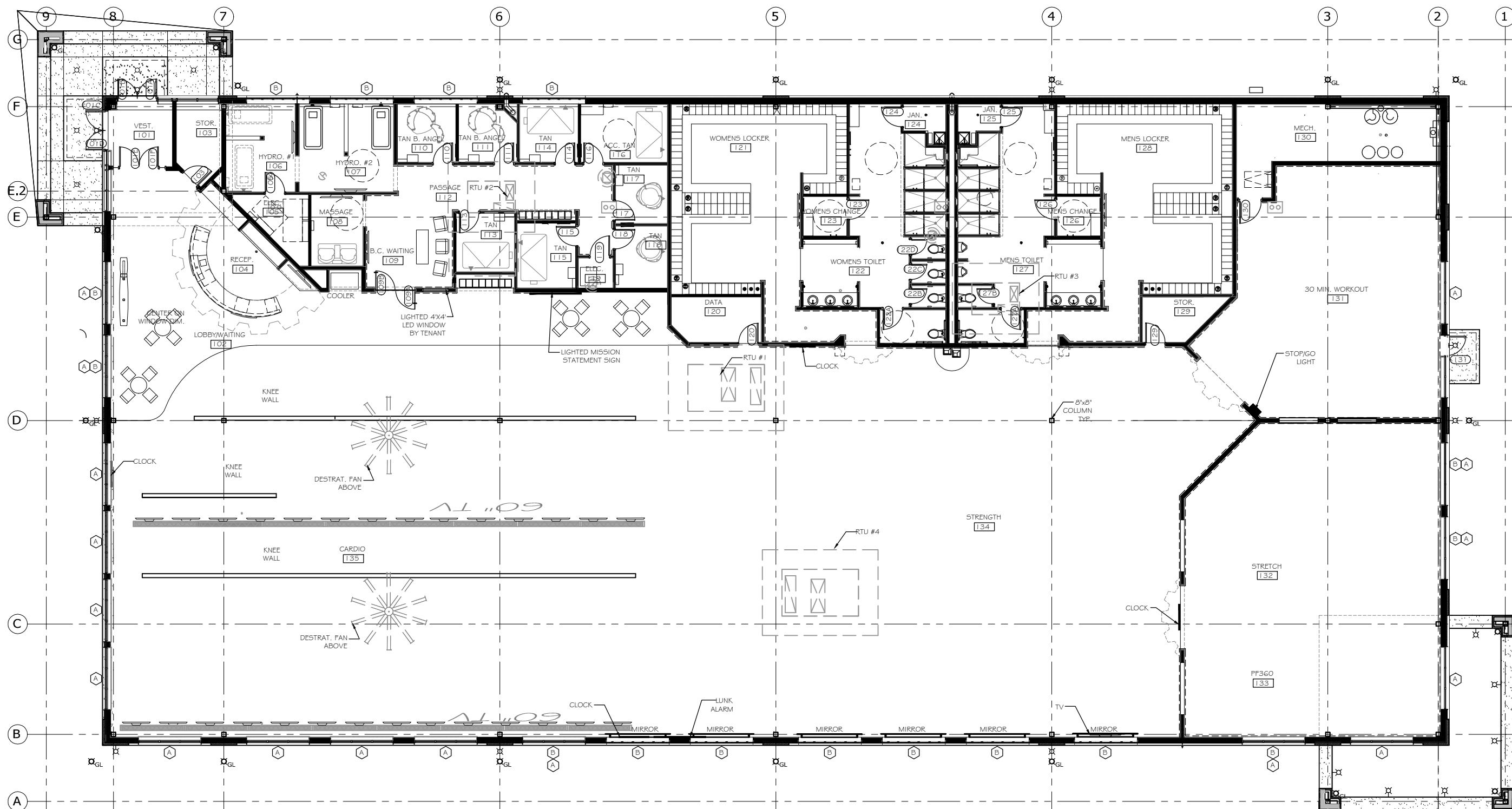


**BUILD-OUT FOR:**  
**PLANET FITNESS -WAUKESHA**  
**LOT 1 - EAST MAIN STREET**  
**WAUKESHA, WISCONSIN**

DRAWN BY  
TPH  
CHECKED BY  
TFM

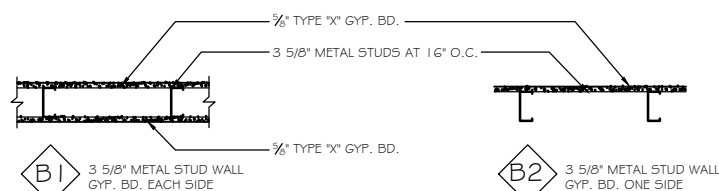
PROJECT NO.  
175060

## A2.1



1. ALL WALLS ARE B1, U.N.O.  
ALL WALLS TO DECK, U.N.O.  
ALL B3 WALLS (7' 1/4") TO DECK, U.N.O.  
ALL B4 WALLS TO DECK, U.N.O.
2. REFER TO SHEET A3.3 FOR EXTERIOR WALL TYPES AND LOCATION(S).
3. SEE A7.1 FOR DOOR/FRAME/WINDOW INFORMATION.
4. REFER TO SHEET A7.3 FOR ALUMINUM COMPOSITE MATERIAL (ACM) CONNECTION DETAILS.
5. SEE A8.1 FOR FLOOR FINISHES, PAINT LAYOUT AND SIGN LOCATIONS.
6. PROVIDE STEEL POST STIFFENERS IN UNBRACED WALLS -  
TYPICAL 5'-0" O/C U.N.O.
7. PLACE FIRE EXTINGUISHERS MAX. 1 50'-0" APART.

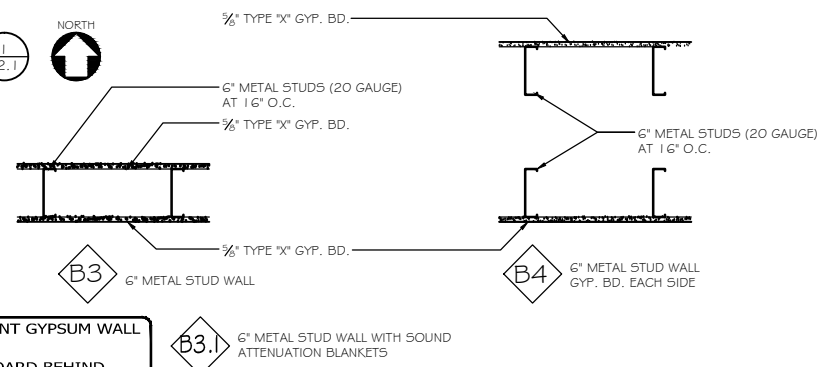
SCALE: 1/8" = 1'-0"



SCALE: 1" = 1'-0"

\* SEE SHEET A3.3 FOR EXTERIOR WALL TYPES

**SPECIAL NOTES: PROVIDE MOIST RESISTANT GYPSUM WALL  
IN ALL WET LOCATIONS!  
PROVIDE TILE BACKER BOARD BEHIND  
ALL TILE WORK!**



1 (2) 3" X 20 GAGE BOXED WALLS STUDS AT BEARING POINTS OF BOX HEADER

2 BOX HEADER-(2) 6" X 18 GAGE STUDS (WITH 3/8" 18 GAGE TRACKS TOP AND BOTTOM). FLANGES OF BOXED HEADER STUDS SHALL BE COPED AND ATTACHED TO WALL STUDS WITH (3) #12 TEK SCREWS. WEBS OF BOX HEADER SHALL EXTEND ALONGSIDE THE WEBS OF THE WALL STUDS

NOTE: ALL PERIMETER WALLS HAVE GYPSUM BOARD THAT RUNS UP TO THE ROOF DECK.

**PRELIMINARY**  
**NOT FOR CONSTRUCTION**

© 2019  
This print is the  
sole property of  
RMA Architects, Inc.  
Any reproduction,  
copying, or use is  
strictly prohibited  
without written  
permission.

**RMA**  
ARCHITECTS  
1050 SOUTH GRIDER STREET  
APPLETON, WISCONSIN 54914  
PHONE: 920-364-9850



BUILD-OUT FOR:  
**PLANET FITNESS-WAUKESHA**  
LOT 1 - EAST MAIN STREET  
WAUKESHA, WISCONSIN

REVISIONS

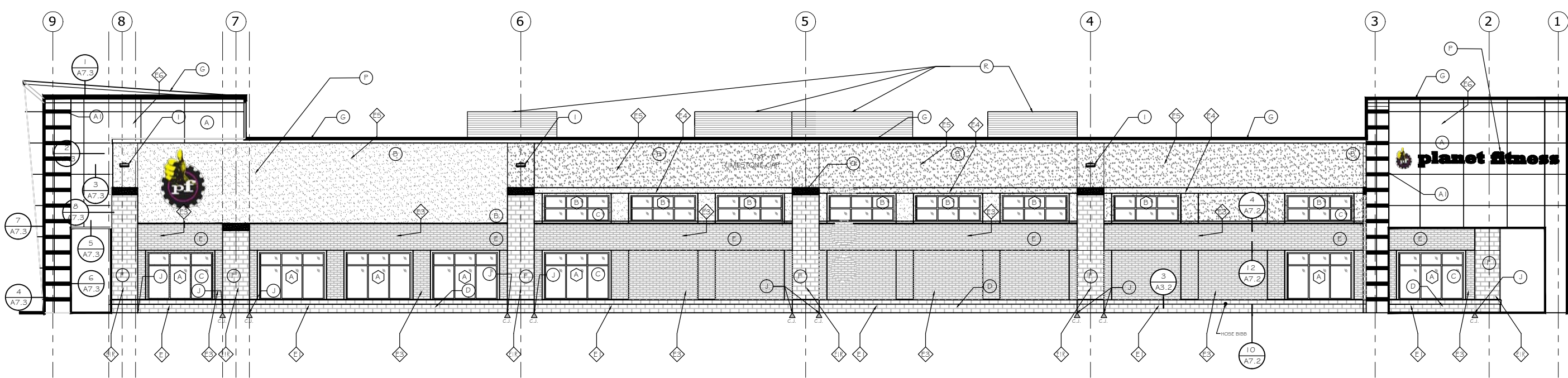
DRAWN BY  
TPH  
CHECKED BY  
TFM

DATE  
1/18/19

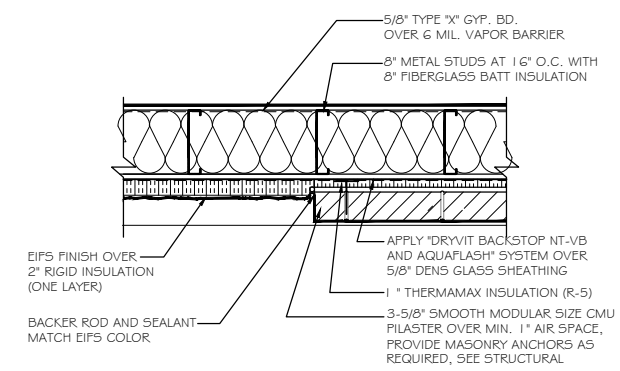
PROJECT NO.  
175060

**A3.1**

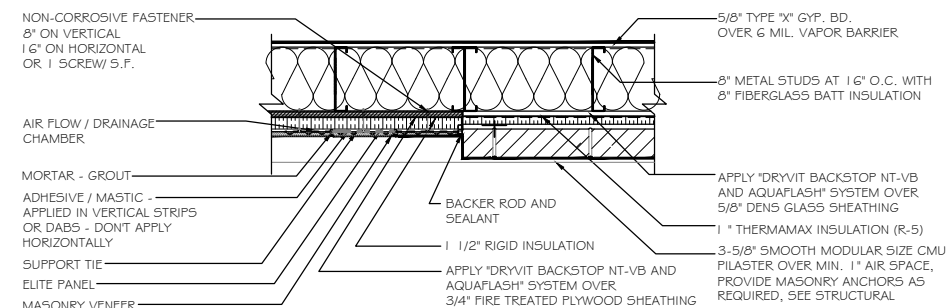
**PRELIMINARY**  
NOT FOR CONSTRUCTION



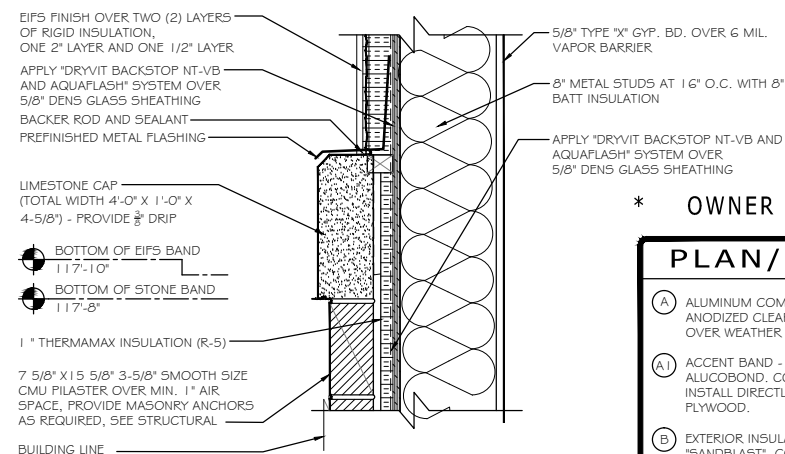
**RIGHT/SOUTH ELEVATION**  
SCALE: 1/8" = 1'-0"  
SEE SHEET A3.3 FOR EXTERIOR WALL TYPES



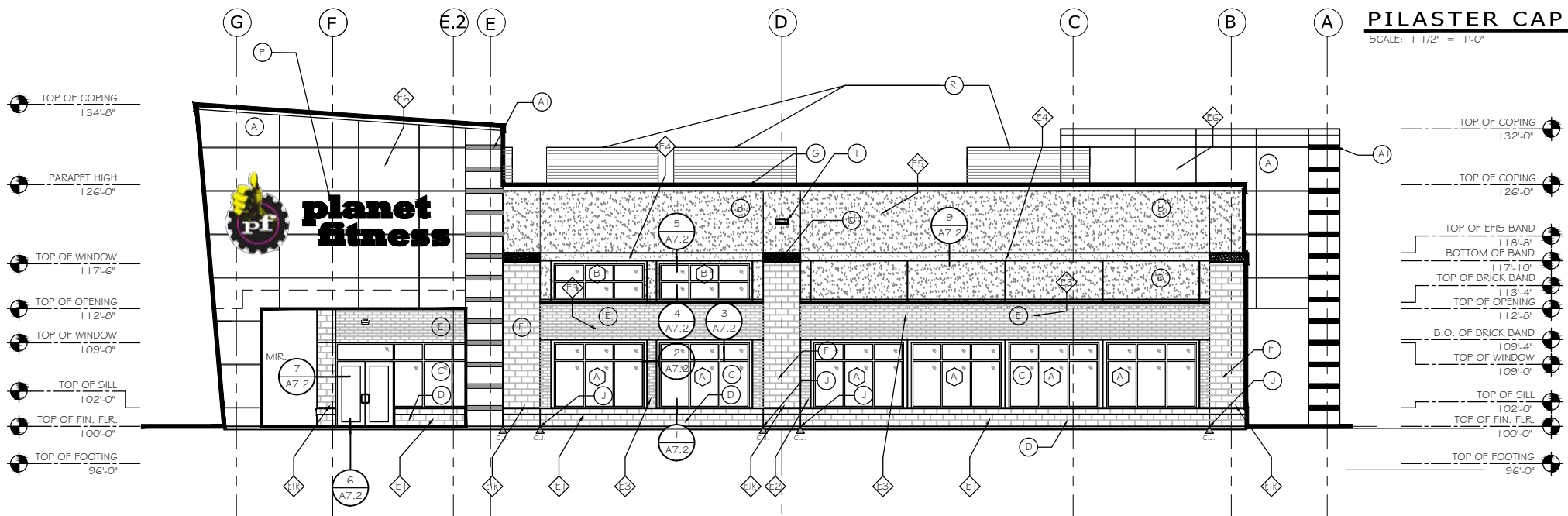
**PILASTER DETAIL**  
SCALE: 1" = 1'-0"



**PILASTER DETAIL**  
SCALE: 1" = 1'-0"



**PILASTER CAP DTL.**  
SCALE: 1 1/2" = 1'-0"



**FRONT/WEST ELEVATION**  
SCALE: 1/8" = 1'-0"  
SEE SHEET A3.3 FOR EXTERIOR WALL TYPES

**FACING MANHATTAN DRIVE**

\* OWNER HAS FINAL DECISION ON COLORS

PLAN/MATERIALS LEGEND	
(A)	ALUMINUM COMPOSITE PANELS (ACM). MANUFACTURER: ALUCOBOND. COLOR: ANODIZED CLEAR. TYPE TO BE - RAINSCREEN SYSTEM 1 - INSTALL DIRECTLY OVER WEATHER BARRIER SYSTEM ON 3/4" FIRE TREATED PLYWOOD.
(A1)	ACCENT BAND - ALUMINUM COMPOSITE PANELS (ACM). MANUFACTURER: ALUCOBOND. COLOR: ANODIZED BLACK. TYPE TO BE - RAINSCREEN SYSTEM 1 - INSTALL DIRECTLY OVER WEATHER BARRIER SYSTEM ON 3/4" FIRE TREATED PLYWOOD.
(B)	EXTERIOR INSULATION FINISH SYSTEM. (EIFS): EQUAL TO "DRYVIT". FINISH TO BE "SANDBLAST". COLOR: E1, E1R, E2, E4, # E5 - SAME - #132 - MOUNTAIN FOG.
(C)	ALUMINUM WINDOWS/STOREFRONT DOOR ASSEMBLY. MANUFACTURER: KAWNEER, SYSTEM - TRIFAB VERSAGLAZE - 451T WITH CENTER GLAZING. COLOR: BLACK ANODIZED #29.
(D)	CMU DECORATIVE BLOCK KNEE WALL. MANUFACTURER: COUNTY MATERIALS - "HERITAGE" COLLECTION. SIZE: FULL BED VENEER, 15 5/8" X 7 5/8" X 7 5/8" EQUAL TO: COLOR: "ASH BLEND". MORTAR COLOR: STANDARD GRAY. MUST SEAL CONCRETE BRICK.
(E)	THIN BRICK VENEER. MANUFACTURER: GLEN-GERY. SIZE: MODULAR - THIN BRICK = 1 1/2" X 2 1/4" X 7 5/8". COLOR: "RUSTIC BURGUNDY THIN BRICK". MORTAR COLOR: STANDARD GRAY.
(F)	CMU PILASTER. SAME AS ITEM "D", CMU DECORATIVE KNEE WALL.
(G)	PREFINISHED METAL COPING. MANUF.: METAL-ERA COLOR: MATTE BLACK.
(H)	EGRESS LIGHT.
(I)	EXTERIOR DECORATIVE LIGHTING.
(J)	CONTROL JOINT. PROVIDE AS SHOWN IN MASONRY WITH BACKER ROD AND SEALANT. CAULK COLOR: TO MATCH ADJACENT SURFACES.
(K)	GAS METER. PAINT METER AND ASSOCIATED PIPING TO MATCH WALL COLOR.
(L)	WATER SERVICE.
(M)	ELECTRIC SERVICE.
(N)	STORM CONNECTION FOR ROOF DRAIN AND OVERFLOW - "LAMBS TONGUE".
(O)	FIRE DEPARTMENT CONNECTION FOR THE SPRINKLER SYSTEM.
(P)	EXTERIOR SIGNAGE & ELEC. REQUIREMENTS BY OTHERS.
(Q)	12" LIMESTONE @ TOP OF PILASTER(S). COLOR: STANDARD LIMESTONE - SHAPE PER DRAWINGS.
(R)	ROOF TOP UNIT # SCREEN. COLOR: TO MATCH COPING - MATTE BLACK.
(S)	HOSE BIBB. FROST PROOF - REFER TO PLUMBING DRAWINGS FOR MORE INFORMATION.
(*)	SEE SHEET A7.1 FOR WINDOW INFORMATION



© 2019  
This print is the  
sole property of  
RMA Architects, Inc.  
Any reproduction,  
copying, or use is  
strictly prohibited  
without written  
permission.

**RMA**  
ARCHITECTS  
1050 SOUTH GRIDER STREET  
APPLETON, WISCONSIN 54914  
PHONE: 920-364-9850



BUILD-OUT FOR:  
**PLANET FITNESS - WAUKESHA**  
LOT 1 - EAST MAIN STREET  
WAUKESHA, WISCONSIN

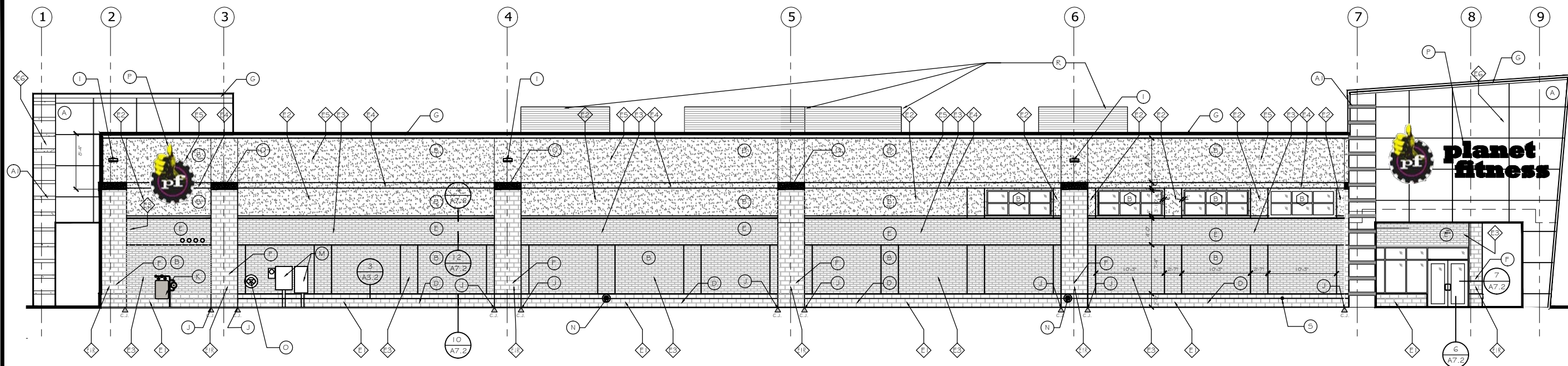
#### REVISIONS

DRAWN BY  
TPH  
CHECKED BY  
TFM

DATE  
1/18/19

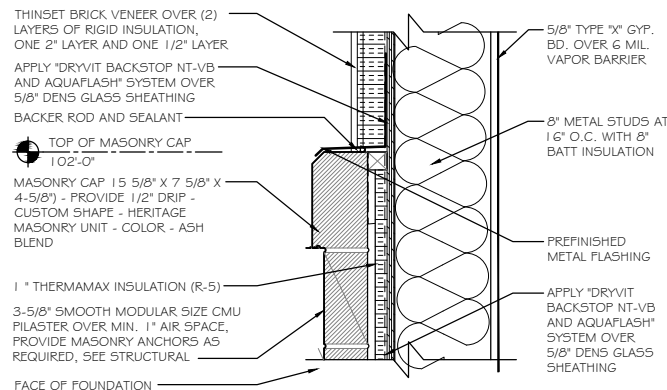
PROJECT NO.  
175060

**A3.2**



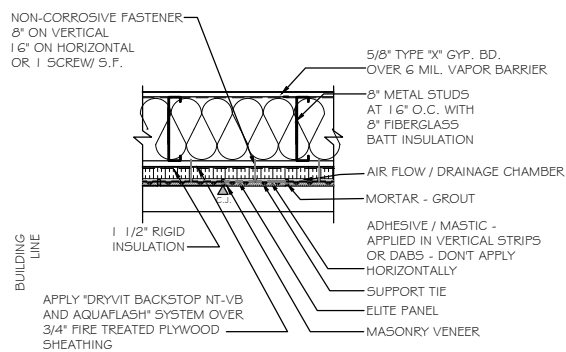
#### LEFT/NORTH ELEVATION

SCALE: 1/8" = 1'-0"  
SEE SHEET A3.3 FOR EXTERIOR WALL TYPES



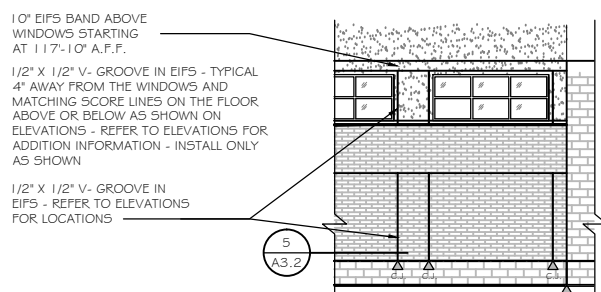
#### KNEE WALL CAP DTL.

SCALE: 1 1/2" = 1'-0"



#### BRICK SCORING DETAIL

SCALE: 1" = 1'-0"

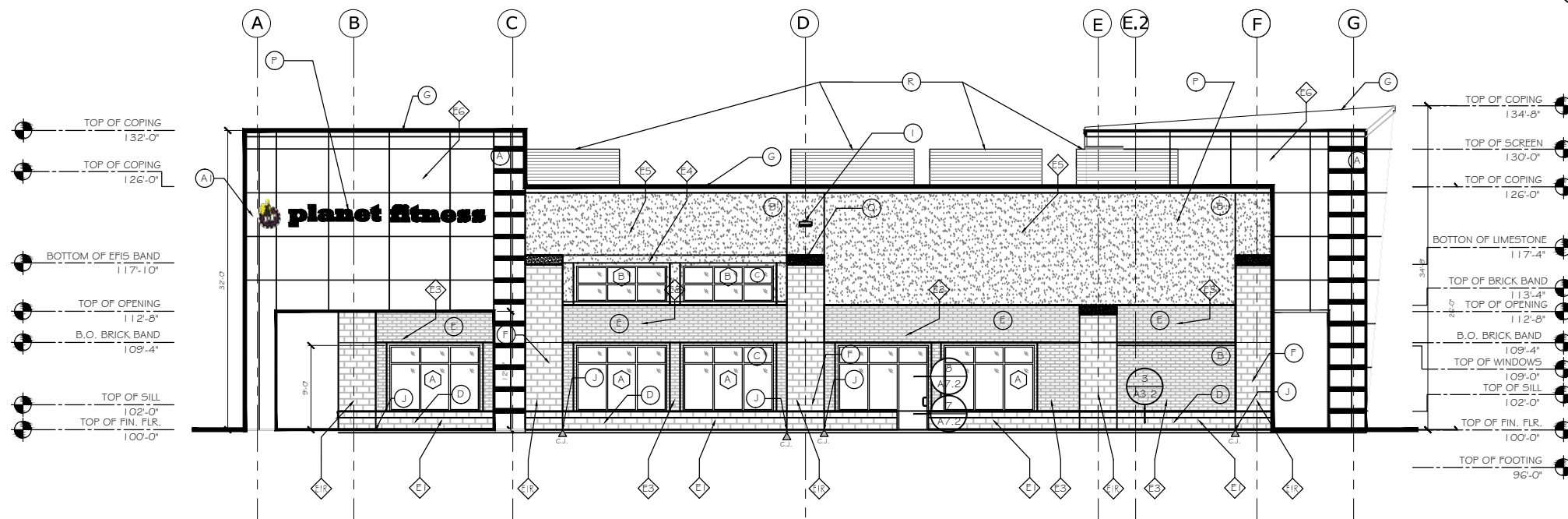


#### BRICK SCORING PATTERN

SCALE: 1" = 1'-0"

#### PLAN/MATERIALS LEGEND

- (A) ALUMINUM COMPOSITE PANELS (ACM). MANUFACTURER: ALUCOBOND. COLOR: ANODIZED CLEAR. TYPE TO BE - RAINSCREEN SYSTEM 1 - INSTALL DIRECTLY OVER WEATHER BARRIER SYSTEM ON 3/4" FIRE TREATED PLYWOOD.
- (A1) ACCENT BAND - ALUMINUM COMPOSITE PANELS (ACM). MANUFACTURER: ALUCOBOND. COLOR: ANODIZED BLACK. TYPE TO BE - RAINSCREEN SYSTEM 1 - INSTALL DIRECTLY OVER WEATHER BARRIER SYSTEM ON 3/4" FIRE TREATED PLYWOOD.
- (B) EXTERIOR INSULATION FINISH SYSTEM. (EIFS): EQUAL TO "DRYVIT". FINISH TO BE "SANDBLAST". COLOR: E1, E1R, E2, E4, # E5 - SAME - #132 - MOUNTAIN FOG.
- (C) ALUMINUM WINDOWS/STOREFRONT DOOR ASSEMBLY. MANUFACTURER: KAWNEER. SYSTEM - TRIFAB VERSAGLAZE - 451T WITH CENTER GLAZING. COLOR: BLACK ANODIZED #29.
- (D) CMU DECORATIVE BLOCK KNEE WALL. MANUFACTURER: COUNTY MATERIALS - "HERITAGE" COLLECTION. SIZE: FULL BED VENEER, 15 5/8" X 7 5/8" X 7 5/8" EQUAL TO: COLOR: "ASH BLEND". MORTAR COLOR: STANDARD GRAY. MUST SEAL CONCRETE BRICK.
- (E) THIN BRICK VENEER. MANUFACTURER: GLEN-GERY. SIZE: MODULAR - THIN BRICK - 1 1/2" X 2 1/4" X 7 5/8". COLOR: "RUSTIC BURGUNDY THIN BRICK". MORTAR COLOR: STANDARD GRAY.
- (F) CMU PILASTER. SAME AS ITEM "D", CMU DECORATIVE KNEE WALL.
- (G) PREFINISHED METAL COPING. MANUF.: METAL-ERA COLOR: MATTE BLACK.
- (H) EGRESS LIGHT.
- (I) EXTERIOR DECORATIVE LIGHTING.
- (J) CONTROL JOINT. PROVIDE AS SHOWN IN MASONRY WITH BACKER ROD AND SEALANT. CAULK COLOR: TO MATCH ADJACENT SURFACES.
- (K) GAS METER. PAINT METER AND ASSOCIATED PIPING TO MATCH WALL COLOR.
- (L) WATER SERVICE.
- (M) ELECTRIC SERVICE.
- (N) STORM CONNECTION FOR ROOF DRAIN AND OVERFLOW - "LAMBS TONGUE".
- (O) FIRE DEPARTMENT CONNECTION FOR THE SPRINKLER SYSTEM.
- (P) EXTERIOR SIGNAGE & ELEC. REQUIREMENTS BY OTHERS.
- (Q) 12" LIMESTONE @ TOP OF PLASTER(S). COLOR: STANDARD LIMESTONE - SHAPE PER DRAWINGS.
- (R) ROOF TOP UNIT & SCREEN. COLOR: TO MATCH COPING - MATTE BLACK.
- (S) HOSE BIBB. FROST PROOF - REFER TO PLUMBING DRAWINGS FOR MORE INFORMATION.
- (\*) SEE SHEET A7.1 FOR WINDOW INFORMATION



#### BACK/EAST ELEVATION

SCALE: 1/8" = 1'-0"  
SEE SHEET A3.3 FOR EXTERIOR WALL TYPES

FACING ACCESS ROAD TO WOODMANS

**PRELIMINARY**  
NOT FOR CONSTRUCTION