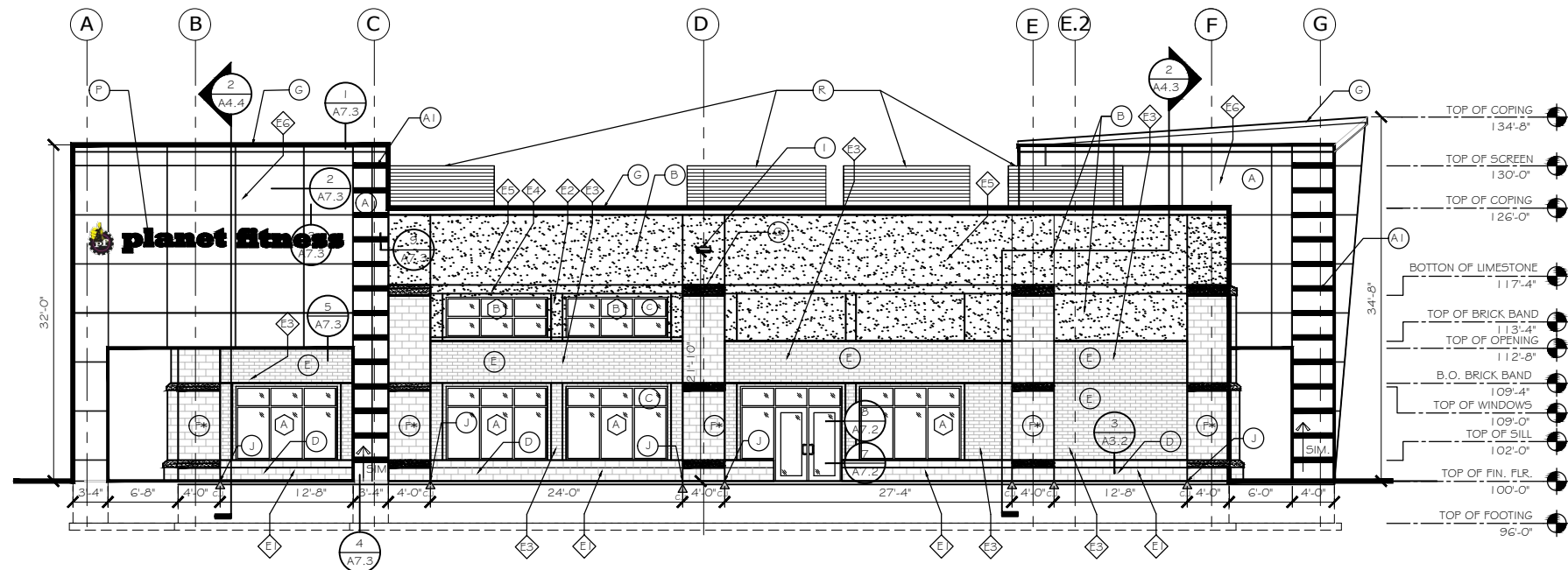


LEFT/NORTH ELEVATION

SCALE: 1/8" = 1'-0"  
SEE SHEET A3.3 FOR EXTERIOR WALL TYPES  
SEE SHEET A3.4 FOR PILASTER DETAILS  
SPANDREL GLASS



BACK/EAST ELEVATION

SCALE: 1/8" = 1'-0"  
SEE SHEET A3.3 FOR EXTERIOR WALL TYPES  
SEE SHEET A3.4 FOR PILASTER DETAILS

FACING ACCESS ROAD TO WOODMANS

PLAN/MATERIALS LEGEND

- (A) ALUMINUM COMPOSITE PANELS (ACM). MANUFACTURER: ALUCOBOND. COLOR: ANODIZED CLEAR. TYPE TO BE - RAINSCREEN SYSTEM 1 - INSTALL DIRECTLY OVER WEATHER BARRIER SYSTEM ON 3/4" FIRE TREATED PLYWOOD.
- (A1) ACCENT BAND - ALUMINUM COMPOSITE PANELS (ACM). MANUFACTURER: ALUCOBOND. COLOR: ANODIZED BLACK. TYPE TO BE - RAINSCREEN SYSTEM 1 - INSTALL DIRECTLY OVER WEATHER BARRIER SYSTEM ON 3/4" FIRE TREATED PLYWOOD.
- (B) EXTERIOR INSULATION FINISH SYSTEM. (EIFS): EQUAL TO "DRYVIT". FINISH TO BE "SANDBLAST". COLOR: E1, E1R, E2, E4, E5 - SAME - #132 - MOUNTAIN FOG.
- (C) ALUMINUM WINDOWS/STOREFRONT DOOR ASSEMBLY. MANUFACTURER: KAWNEER. SYSTEM - TRIFAB VERSAGLAZE - 451T WITH CENTER GLAZING. COLOR: BLACK ANODIZED #29.
- (D) CMU DECORATIVE BLOCK KNEE WALL. MANUFACTURER: COUNTY MATERIALS - "HERITAGE" COLLECTION. SIZE: FULL BED VENEER, 15 5/8" X 7 5/8" EQUAL TO: COLOR: "ASH BLEND". MORTAR COLOR: STANDARD GRAY. MUST SEAL CONCRETE BRICK.
- (E) THIN BRICK VENEER. MANUFACTURER: GLEN-GERY. SIZE: MODULAR - THIN BRICK - 1 1/2" X 2 1/4" X 7 5/8". COLOR: "RUSTIC BURGUNDY" THIN BRICK. MORTAR COLOR: STANDARD GRAY.
- (F) CMU PILASTER. SAME AS ITEM "D". CMU DECORATIVE KNEE WALL. SEE A3.4.
- (G) PREFINISHED METAL COPING. MANUF.: METAL-ERA COLOR: MATTE BLACK.
- (H) EGRESS LIGHT.
- (I) EXTERIOR DECORATIVE LIGHTING.
- (J) CONTROL JOINT. PROVIDE AS SHOWN IN MASONRY WITH BACKER ROD AND SEALANT. CAULK COLOR: TO MATCH ADJACENT SURFACES.
- (K) GAS METER. PAINT METER AND ASSOCIATED PIPING TO MATCH WALL COLOR.
- (L) WATER SERVICE.
- (M) ELECTRIC SERVICE.
- (N) STORM CONNECTION FOR ROOF DRAIN AND OVERFLOW - "LAMBS TONGUE".
- (O) FIRE DEPARTMENT CONNECTION FOR THE SPRINKLER SYSTEM.
- (P) EXTERIOR SIGNAGE & ELEC. REQUIREMENTS BY OTHERS.
- (Q) 12" LIMESTONE @ TOP OF PILASTER(S). COLOR: STANDARD LIMESTONE - SHAPE PER DRAWINGS. SEE SHEET A3.4 FOR OTHER PILASTER DETAILS
- (R) ROOF TOP UNIT # SCREEN. COLOR: TO MATCH COPING - MATTE BLACK.
- (S) HOSE BIBB. FROST PROOF - REFER TO PLUMBING DRAWINGS FOR MORE INFORMATION.
- (\*) SEE SHEET A7.1 FOR WINDOW INFORMATION

PRELIMINARY  
NOT FOR CONSTRUCTION

BUILD-OUT FOR:  
PLANET FITNESS - WAUKESHA  
LOT 1 - EAST MAIN STREET  
WAUKESHA, WISCONSIN

REVISIONS

DRAWN BY  
TPH  
CHECKED BY  
TFM

DATE  
02/25/19

PROJECT NO.  
175060

A3.2

© 2019  
This print is the  
sole property of  
RMA Architects, Inc.  
Any reproduction,  
copying, or use is  
strictly prohibited  
without written  
permission.

RMA  
ARCHITECTS  
1050 SOUTH GRIDER STREET  
APPLETON, WISCONSIN 54914  
PHONE: 920-364-9850

