

haag müller, inc.  
Architecture • Engineering • Interiors

101 East Grand Avenue, Suite 1  
Port Washington, Wisconsin 53074  
262.268.1200 www.haagmuller.com  
© 2018 haag müller, inc.



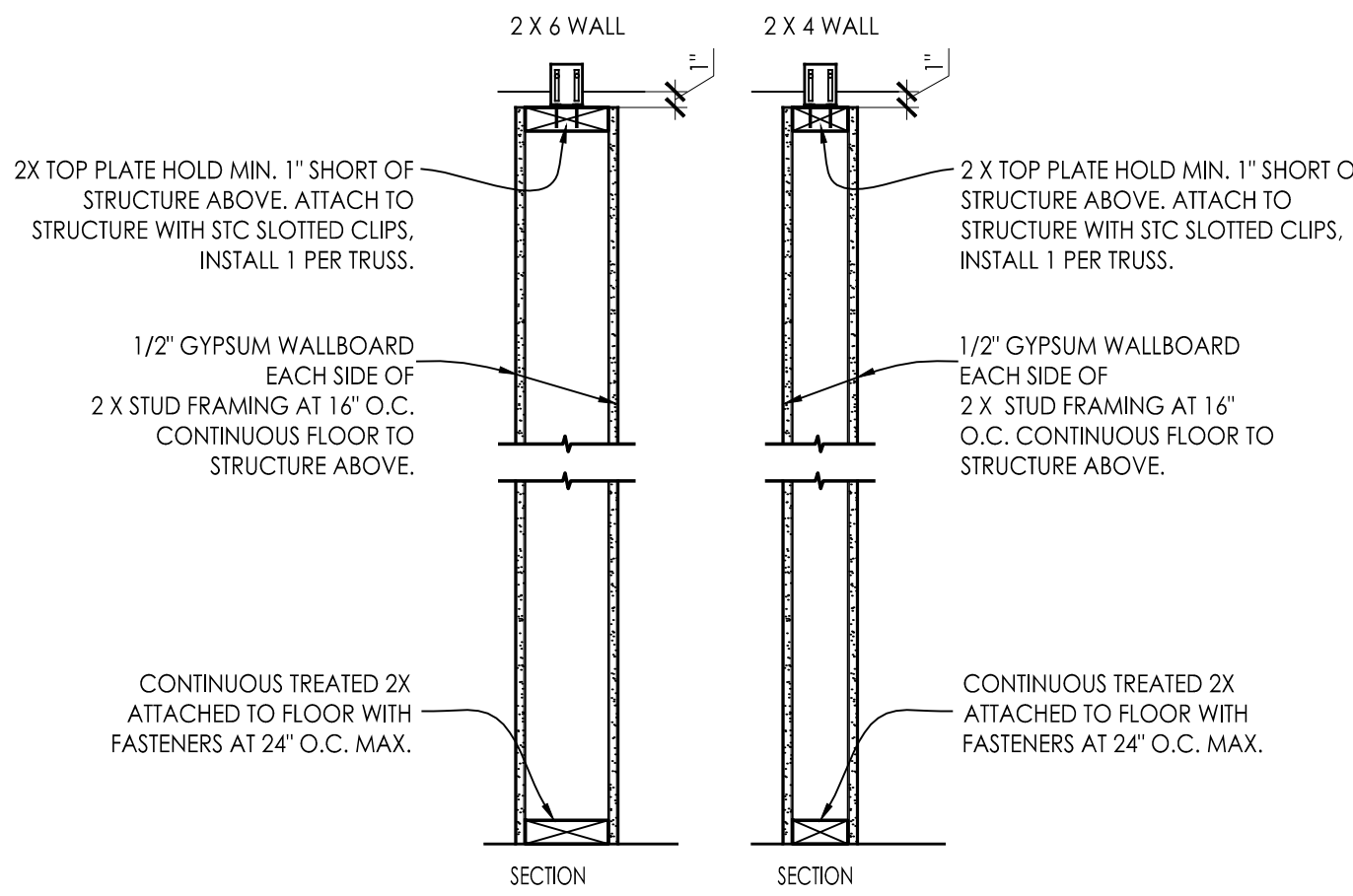
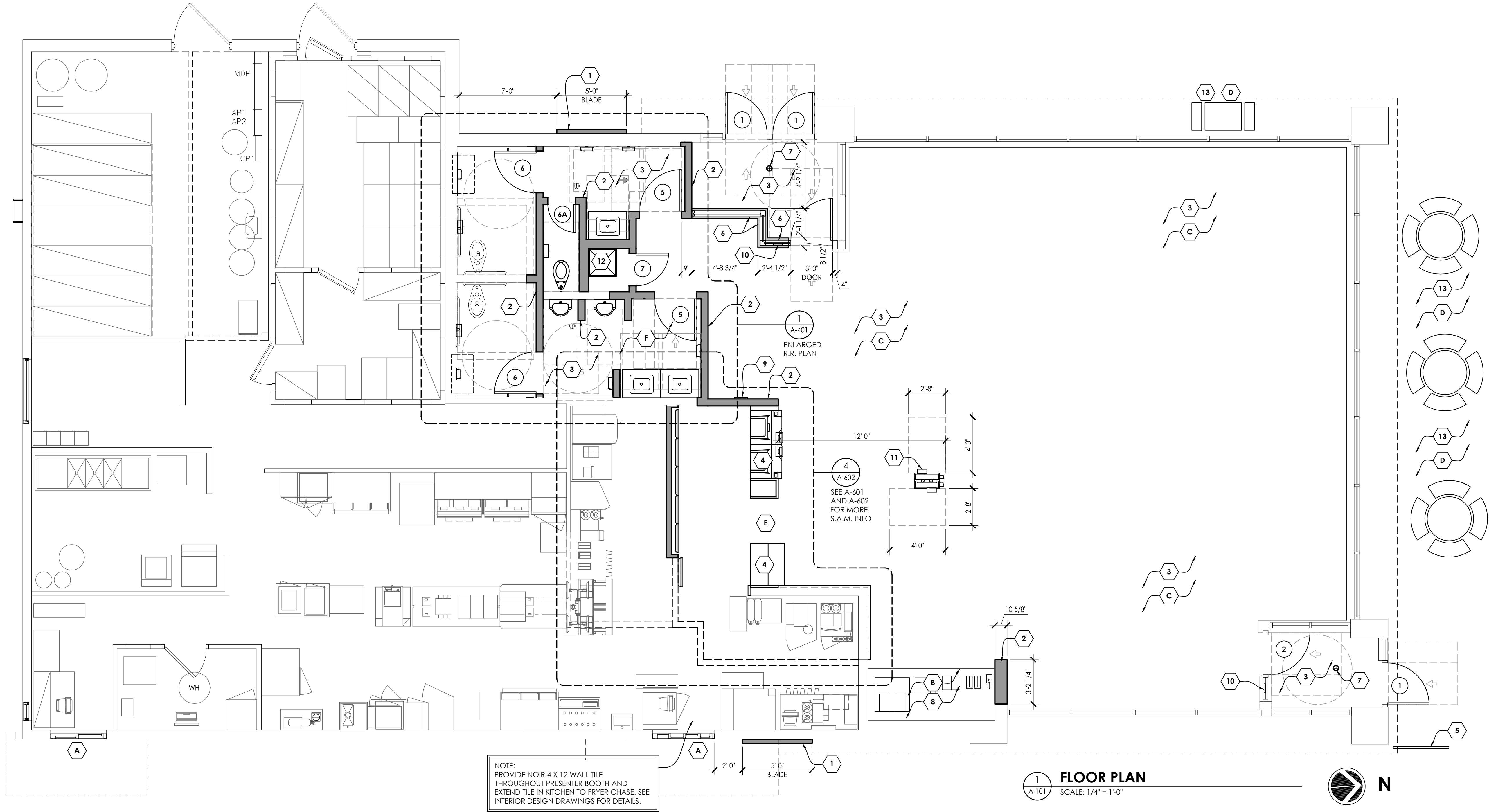
FLOOR PLAN

McDONALDS MAJOR REMODEL

McDONALD'S RESTAURANT (SITE ID # 480596)

2047 SILVERNAIL ROAD

CITY OF WAUKESHA, WISCONSIN



1 PARTITION TYPE  
1" = 1'-0"

FLOOR PLAN GENERAL NOTES:

- ALL INTERIOR FINISHES TO BE PROVIDED BY INTERIOR DESIGNER - BY OTHERS.
- DECORATIVE MATERIALS SHALL BE FLAME RETARDANT.
- EXITS, EXIT LIGHTS, FIRE ALARM STATIONS, HOSE CABINETS, AND EXTINGUISHER LOCATIONS SHALL NOT BE CONCEALED BY DECORATIVE MATERIAL.
- DIMENSIONS ON PLAN ARE NOMINAL. GENERAL CONTRACTOR TO FIELD VERIFY ALL DIMENSIONS.
- 5% OF DINING ROOM SEATING IS REQUIRED TO BE ACCESSIBLE AND SHALL BE EVENLY DISPERSED.
- CENTER DINING ROOM OUTLETS ON TABLES. SEE DECOR PLANS FOR TABLE LOCATIONS. SEE ELECTRICAL PLANS FOR MORE INFORMATION.
- SUPPLIER INFORMATION FOR McDonald's ACCESSIBILITY SIGN PACKAGE:

FORREST PERMA-SIGNS, 92 FIRST STREET  
P.O. BOX 588  
NEW ROCHELLE, NY 10802  
ATTN: TOM GIORDANO  
OFFICE: 800-214-8765  
DIRECT: 914-632-9892

FLOOR PLAN ACCESSIBILITY KEYED NOTES:

THE FOLLOWING ACCESSIBILITY KEYED NOTES ARE ENCLOSED WITH A SYMBOL ON THE FLOOR PLAN.

- ADD "SPEECH / HEARING IMPAIRED ASSISTANCE AVAILABLE" SIGNAGE TO CASH AND PRESENTER DRIVE-THRU WINDOWS.
- ADD STAFF ASSISTANCE SIGNAGE TO SELF-SERVICE AREA.
- 5% OF DINING ROOM SEATING IS REQUIRED TO BE ACCESSIBLE AND SHALL BE EVENLY DISPERSED.
- 5% OF EXTERIOR SEATING IS REQUIRED TO BE ACCESSIBLE AND SHALL BE EVENLY DISPERSED.
- ADD BRAILLE & PICTURE MENU SIGNAGE TO A LOCATION VISIBLE NEAR FRONT COUNTER.
- SEE ENLARGED RESTROOM PLANS ON SHEET A-401 FOR ADDITIONAL ACCESSIBILITY REQUIREMENTS.

FLOOR PLAN KEYED NOTES:

THE FOLLOWING FLOOR PLAN KEYED NOTES ARE ENCLOSED WITH A SYMBOL ON THE FLOOR PLAN.

- NEW BLADE/PYLON. SEE SECTION X/A-30X & X/A-30X AND S-SHEETS FOR MORE INFORMATION ON FRAMING AND MATERIALS.
- NEW INTERIOR WALL CONSTRUCTION. REFER TO PARTITION TYPE DETAILS ON THIS SHEET FOR MORE INFORMATION.
- NEW FLOOR TILE IN DINING AREA, RESTROOMS, AND VESTIBULES. SEE INTERIOR DRAWINGS FOR MORE INFORMATION. REFER TO DETAIL X & X/A-501 FOR MORE INFORMATION ON INSTALLATION AND CONTROL JOINTS.
- NEW MODULAR SPLIT DUAL POINT FRONT COUNTER SYSTEM. REFER TO ELECTRICAL SHEETS FOR ELECTRICAL CONNECTION INFORMATION.
- NEW STAINLESS GUARD RAIL. SEE SITE PLAN FOR MORE INFORMATION.
- NEW INTERIOR GLAZING: 1/4" CLEAR GLASS WITH PARTIAL HEIGHT WALL BELOW. FRAMES TO BE THERMALLY BROKEN. COLOR TO BE DARK BRONZE ANODIZED ALUMINUM. (PROVIDE TEMPERED GLASS WHERE SILL HEIGHT IS LESS THAN 24" A.F.F.). REFER TO DETAIL 2/A-101 FOR MORE INFORMATION.

- NEW ELEVATED FLOOR DRAIN AT VESTIBULES. SEE PLUMBING SHEETS FOR MORE INFORMATION. G.C. TO INFILL EXISTING PEDIGRID DEPRESSION WITH CONCRETE TO FLUSH FLOOR SURFACE.
- EXISTING SSB LOCATION TO REMAIN AS IS. NEW CORIAN TOP. TILE TO TOP OF COUNTER. TILE BACK AND SIDES SURROUNDING. STAINLESS DOORS TO REMAIN AS IS.
- POSTING OF OCCUPANT LOAD: OCCUPANT LOAD = XXX. EVERY ROOM OR SPACE THAT IS AN ASSEMBLY OCCUPANCY SHALL HAVE THE OCCUPANT LOAD OF THE ROOM OR SPACE POSTED IN A CONSPICUOUS PLACE, NEAR THE MAIN EXIT OR EXIT ACCESS DOORWAY FROM THE ROOM OR SPACE. POSTED SIGNS SHALL BE OF AN APPROVED LEGIBLE PERMANENT DESIGN AND SHALL BE MAINTAINED BY THE OWNER OR AUTHORIZED AGENT.
- NEW "EXIT" SIGN PLACED AT ALL EXIT DOORS. SEE A-403 FOR MORE INFORMATION.
- NEW TWO SIDED ORDER KIOSKS. SEE ELECTRICAL SHEETS FOR CONNECTION INFORMATION.
- NEW CUSTOM 3-SIDED STAINLESS STEEL MOP SINK PER G.C.
- NEW/RELOCATED EXTERIOR SEATING. OWNER TO VERIFY.

REVISIONS		DESCRIPTION	
NO.	DATE		
DATE:		02/01/2019	
PROJ. NO:		1805124	
DRAWN BY:		ZP	
SHEET			
A-101			





© 2018 haag muller, inc.



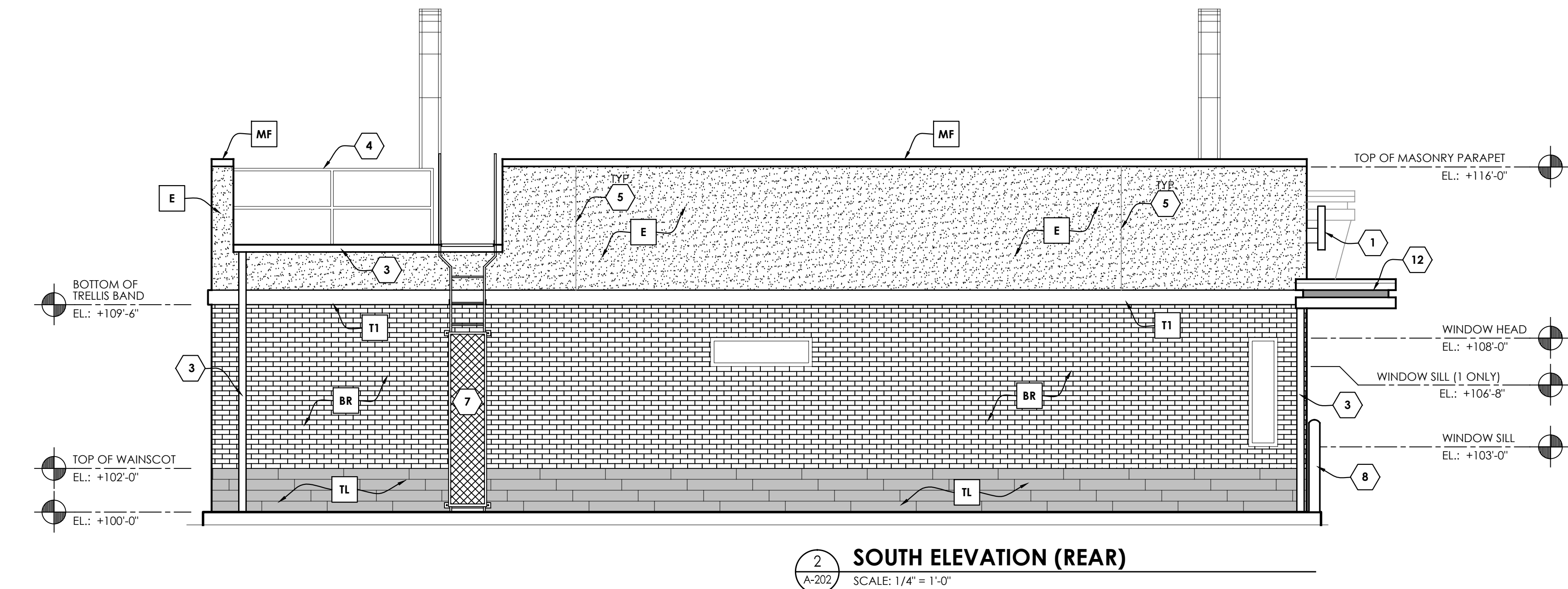
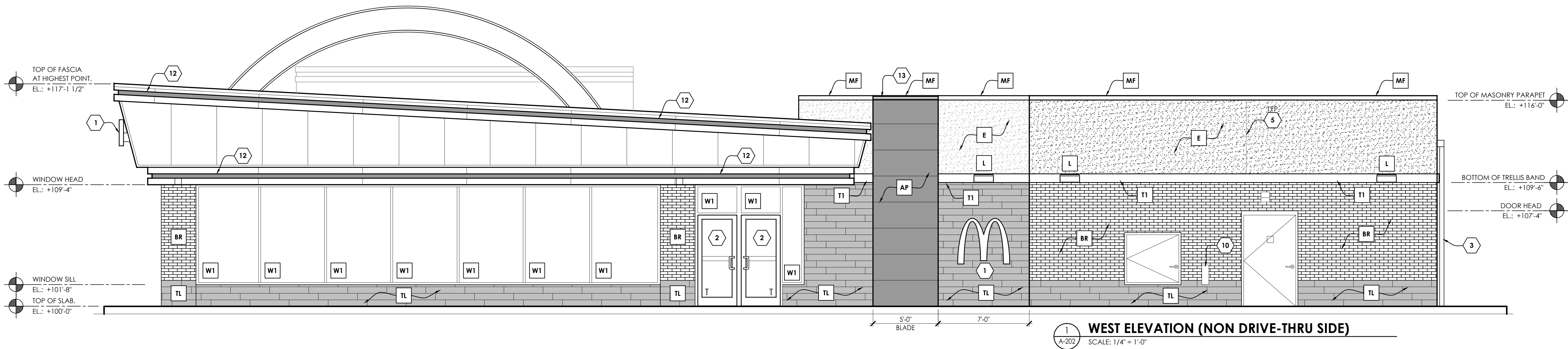
MATERIAL COLOR TABLE	
1.) ALL COLORS LISTED HERE UNLESS DESCRIBED IN THE KEYED NOTES. 2.) ALL PAINT COLORS LISTED ARE BY: BENJAMIN MOORE	
CORE 16 MRP COLOR SCHEME	MODERN
FIELD PAINT COLOR (E.I.F.S.)	BM STORMY SKY 1616
ACCENT PAINT COLOR	BM PEWTER 2121-30
PAINT COLOR FOR METAL UTILITY DOORS AND FRAMES	MATCH BUILDING FIELD PAINT COLOR

2. SUBSTRATES SHOULD BE SUFFICIENTLY FLAT TO ALLOW UNIFORM COVERAGE  
AVOID EXCESSIVE MORTAR THICKNESS.

DATE:	12/20/2018
PROJ. NO:	1805124
DRAWN BY:	ZP
SHEET	

# A-201





### ELEVATION KEYED NOTES - GROUP TWO NOTES:

THE FOLLOWING ELEVATION KEYED NOTES ARE ENCLOSED WITH A (X) SYMBOL ON THE ELEVATIONS.

- ILLUMINATED McDONALD'S SIGNAGE: LED ILLUMINATED. SIGNS MUST BE CONTROLLED VIA PHOTOCELL OR A PROGRAMMABLE LIGHTING CONTROL PANEL PER WARRANTY REQUIREMENTS. CONTROLS BY E.C. COORDINATE WITH OWNER CONTROL TYPE: PHOTOCELL OR CONTROL PANEL. CURRENT SIGN MANUFACTURER FOR SIGNAGE PACKAGE IS: EVERBRITE (414-529-3500). UNDER SEPARATE PERMIT. FINAL SIGN PACKAGE TO BE APPROVED BY MUNICIPALITY.
- NEW STOREFRONT ENTRANCE DOORS PER PLAN.
- PAINT EXISTING GUTTERS AND DOWNSPOUTS TO MATCH CORRUGATED METAL PANEL.
- EXISTING ROOFTOP RAILING TO REMAIN AS IS. PAINT FIELD COLOR PER MATERIAL COLOR TABLE THIS SHEET.
- E.I.F.S. CONTROL JOINTS INSTALLED PER MANUFACTURERS REQUIREMENTS.
- EXISTING CASH AND PRESENTER BOOTH DRIVE-THRU WINDOWS TO REMAIN.
- PRIME & PAINT EXISTING ROOF ACCESS LADDER. COLOR: TO MATCH BASE PAINT COLOR.
- EXISTING BOLLARDS TO REMAIN AS IS.
- STAINLESS STEEL GUARD RAIL. REFER TO THE SITE PLAN FOR DETAILS.
- EXISTING BULK CO2 FILL BOX TO REMAIN.
- NEW RMHC PASS THROUGH COIN COLLECTOR. SEE A-501 FOR DETAILS.
- PAINT EXISTING METAL FINISH TO MATCH ACCENT COLOR ON MATERIAL COLOR TABLE ON A-201 & A-202.
- HIRAF LINEAR LED FACADE LIGHT TO BE INSTALLED ALONG FRONT OF COPING. AVAILABLE FROM SECURITY LIGHTING. INSTALL PER MANUFACTURER'S SPECIFICATIONS. SEE ELECTRICAL SHEETS AND ROOF PLAN.
- NEW PULL FORWARD PARKING SIGN IN POLLARD. SEE DETAIL 3/SD-302 FOR MORE INFORMATION.

### E.I.F.S. GENERAL NOTES:

E.I.F.S. EXPANSION JOINTS PER MFG. THE FOLLOWING REQUIREMENTS ARE BASED ON DRYVIT MANUFACTURING STANDARDS. AS A MINIMUM, EXPANSION JOINTS SHALL BE PLACED AT THE FOLLOWING LOCATIONS:

- WHERE EXPANSION JOINTS OCCUR IN THE SUBSTRATE SYSTEM.
- WHERE BUILDING EXPANSION JOINTS OCCUR.
- AT FLOOR LINES IN WOOD FRAME CONSTRUCTION.
- AT FLOOR LINES OF NON-WOOD FRAMED BUILDINGS WHERE SIGNIFICANT MOVEMENT IS EXPECTED.
- WHERE THE OUTSULATION PLUS SYSTEM ABUTS DISSIMILAR MATERIALS.
- WHERE THE SUBSTRATE TYPE CHANGES.
- WHERE PREFABRICATED PANELS ABUT ONE ANOTHER.
- IN A CONTINUOUS ELEVATION AT INTERVALS NOT EXCEEDING 75 FEET.
- WHERE SIGNIFICANT STRUCTURAL MOVEMENT OCCURS, SUCH AS CHANGES IN ROOFLINE, BUILDING SHAPE OR STRUCTURAL SYSTEM.

### ELEVATION KEYED NOTES - GROUP ONE NOTES:

THE FOLLOWING ELEVATION KEYED NOTES ARE ENCLOSED WITH A (X) SYMBOL ON THE ELEVATIONS.

- ALPOLIC COMPOSITE METAL WALL PANEL SYSTEM. COLOR: RON RED. SEE SECTION 1 & 2/A-301 FOR MORE INFORMATION.
- NEW THIN BRICK VENEER ABOVE WAINSCOT AND BELOW ACCENT BAND. HEBRON BRICK COMPANY. NAME: SLATE GRAY. SIZE: MODULAR. TEXTURE: VELOUR.
- WATER MANAGED E.I.F.S. (EXTERIOR INSULATION FINISH SYSTEM) OUTSULATION PLUS MD BY DRYVIT OR EQUAL. PROVIDE PANZER 20 IMPACT MESH IN ALL E.I.F.S BELOW ELEV +108'-0". FINISH: HYDROPHOPIC. TEXTURE: SANDBLAST. PROVIDE EXPANSION JOINTS AT INSIDE CORNERS. ALL OTHERS TO BE FIELD LOCATED PER MFG SPECS. SEE BUILDING SECTIONS & SHEET A-504 & A-505 FOR DETAILS. COLORS PER COLOR TABLE THIS SHEET.
- RADIAL WALL SCONCE: DOWNLIGHT ONLY. AVAILABLE THROUGH SECURITY LIGHTING. INSTALL PER MANUFACTURER'S INSTRUCTIONS. SEE ELECTRICAL SHEETS FOR SPECIFICATIONS AND ROOF PLAN FOR SPACING. COLOR = SILVER
- ALUMINUM EDGE FASCIA: BY METAL-ERA COLOR: SEE DETAILS 1-4/A-501. COLOR: CITYSCAPE.
- 2x8 ALUM. FASCIA BAND: SEE ROOF PLAN AND MANUFACTURER SHOP DRAWINGS FOR MORE INFORMATION. COLOR: CITYSCAPE.
- TILE: WAINSCOT AND DRIVE THRU SURROUND. EUROWEST: E-WOOD COLLECTION COLOR: RP BLACK. SIZE: 6 x 36. 1/4 RUNNING BOND. WATERPROOFING MEMBRANE: FLEXIBLE, CEMENT BASED WATERPROOFING MEMBRANE. - MAPEI - MAPELASTIC AQUA DEFENSE. - MAPEI - MAPELASTIC FIBERGLASS MESH. QUICK-SETTING THIN-SET MORTAR: MAPEI - GRANI/RAPID SYSTEM CONSISTING OF GRANI/RAPID POWDER AND LATEX ADDITIVE. FAST SETTING, POLYMER-MODIFIED GROUT: MAPEI - ULTRACOLOR PLUS FA, FAST SETTING, POLYMER-MODIFIED, COLOR-CONSISTENT, NON-SHRINKING, EFFLORESCENCE-FREE GROUT. GROUT COLOR: ULTRA COLOR PLUS FA - 47 CHARCOAL. GROUT WIDTH: 1/8" TO 3/16". CONTACT: JAN DIETER. (714) 937-7500. MOVEMENT JOINT (MJ): DILEX BW8100GS BY SCHLUTER SYSTEMS, COLOR: BLACK. OUTSIDE CORNERS STRIPS: RONDEC R0100SDA BY SCHLUTER SYSTEMS, COLOR: DARK ANTHRACITE. CONTACT: (800) 267-0817
- EXISTING STOREFRONT GLAZING AND FRAMES TO REMAIN.

### TILE GENERAL NOTES:

REFERENCE 2011 TCNA HANDBOOK - EJ171 MOVEMENT JOINT GUIDELINES

- LOCATION AND FREQUENCY OF JOINTS: EXTERIOR: 8' TO 12' IN EACH DIRECTION, OR AS INDICATED ON ELEVATIONS.
- JOINT WIDTH: EXTERIOR: MINIMUM 3/8" FOR JOINTS 8' ON CENTER, MINIMUM 1/2" FOR JOINTS 12' ON CENTER.
- PERIMETER JOINTS: MOVEMENT JOINTS ARE REQUIRED WHERE TILE WORK ABUTS RESTRAINING SURFACES SUCH AS PERIMETER WALLS, AND GRADE. FLEXIBLE SEALANT AND COMPRESSIBLE BACK-UP WHEN REQUIRED OR BOND BREAKER TAPE. JOINT MATERIAL: URETHANE. COLOR: TO MATCH TILE AND GROUT COLOR.
- TIE-BACK AND SIGNAGE ATTACHMENT: PRE-DRILL TILE AND SLEEVE AND SEAL ALL ATTACHMENT POINTS.

FIELD AND INSTALLATION REQUIREMENTS:

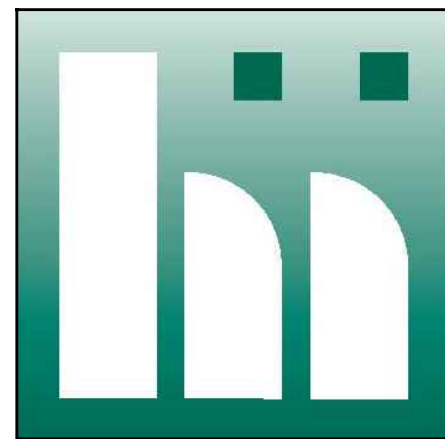
SETTING, GROUTING, MORTAR AND MORTAR COVERAGE TO ADHERE TO CURRENT TCNA HANDBOOK RECOMMENDATIONS.

- MORTAR COVERAGE: AVERAGE CONTACT AREA FOR WET AREAS IS 95%. MORTAR COVERAGE IS TO BE EVENLY DISTRIBUTED TO SUPPORT EDGES AND CORNERS, KEYING AS REQUIRED.
- SUBSTRATES SHOULD BE SUFFICIENTLY FLAT TO ALLOW UNIFORM COVERAGE AND AVOID EXCESSIVE MORTAR THICKNESS.

### MATERIAL COLOR TABLE

1.) ALL COLORS LISTED HERE UNLESS DESCRIBED IN THE KEYED NOTES.  
2.) ALL PAINT COLORS LISTED ARE BY: BENJAMIN MOORE

CORE 16 MRP COLOR SCHEME	MODERN
FIELD PAINT COLOR (E.I.F.S.)	BM STORMY SKY 1616
ACCENT PAINT COLOR	BM PEWTER 2121-30
PAINT COLOR FOR METAL UTILITY DOORS AND FRAMES	MATCH BUILDING FIELD PAINT COLOR



haag müller, inc.

Architecture • Engineering • Interiors

101 East Grand Avenue, Suite 1  
Port Washington, Wisconsin 53074  
262.268.1200 www.haagmuller.com

© 2018 haag müller, inc.



### EXTERIOR ELEVATIONS

#### McDONALD'S MAJOR REMODEL

McDONALD'S RESTAURANT (SITE ID # 480596)

2047 SILVERNAIL ROAD

CITY OF WAUKESHA, WISCONSIN

REVISIONS		DESCRIPTION
NO.	DATE	
1		
2		
3		
4		
5		
6		
7		
8		
9		
10		
11		
12		
13		
14		
15		
16		
17		
18		
19		
20		
21		
22		
23		
24		
25		
26		
27		
28		
29		
30		
31		
32		
33		
34		
35		
36		
37		
38		
39		
40		
41		
42		
43		
44		
45		
46		
47		
48		
49		
50		
51		
52		
53		
54		
55		
56		
57		
58		
59		
60		
61		
62		
63		
64		
65		
66		
67		
68		
69		
70		
71		
72		
73		
74		
75		
76		
77		
78		
79		
80		
81		
82		
83		
84		
85		
86		
87		
88		
89		
90		
91		
92		
93		
94		
95		
96		
97		
98		
99		
100		
101		
102		
103		
104		
105		
106		
107		
108		
109		
110		
111		
112		
113		
114		
115		
116		
117		
118		
119		
120		
121		
122		
123		
124		
125		
126		
127		
128		
129		
130		
131		
132		
133		
134		
135		
136		
137		
138		
139		
140		
141		
142		
143		
144		
145		
146		
147		
148		
149		
150		
151		
152		
153		
154		
155		
156		
157		
158		
159		
160		
161		
162		
163		
164		
165		
166		
167		
168		
169		
170		
171		
172		
173		
174		
175		
176		
177		
178		
179		
180		
181		
182		
183		
184		
185		
186		
187		
188		
189		
190		
191		
192		
193		
194		
195		
196		
197		
198		
199		
200		
201		
202		
203		
204		
205		
206		
207		
208		
209		
210		
211		
212		
213		
214		
215		
216		
217		
218		
219		
220		
221		
222		
223		
224		
225		
226		
227		
228		
229		
230		
231		
232		
233		
234		
235		
236		
237		
238		
239		
240		
241		
242		
243		
244		
245		
246		
247		
248		
249		
250		
251		
252		
253		
254		
255		
256		
257		
258		
259		
260		
261		
262		
263		
264		
265		
266		
267		
268		
269		
270		
271		
272		
273		
274		
275		
276		
277		
278		
279		
280		
281		
282		
283		
284		
285		
286		
287		
288		
289		
290		
291		
292		
293		
294		
295		
296		
297		
298		
299		
300		
301		
302		
303		
304		
305		
306		
307		
308		
309		
310		
311		
312		
313		
314		
315		
316		
317		
318		
319		
320		
321		
322		
323		
324		
325		
326		
327		
328		
329		
330		
331		
332		
333		
334		
335		
336		
337		
338		
339		
340		
341		
342		
343		
344		
345		
346		
347		
348		
349		
350		
351		
352		
353		
354		
355		
356		
357		
358		
359		
360		
361		
362		
363		
364		
365		
366		
367		
368		
369		
370		
371		
372		
373		
374		
375		
376		
377		
378		
379		
380		
381		
382		
383		
384		
385		
386		
387		
388		
389		
390		
391		
392		
393		
394		
395		
396		
397		
398		
399		
400		
401		
402		
403		
404		
405		
406		
407		
408		
409		
410		
411		
412		
413		
414		
415		
416		
417		
418		
419		
420		
421		
422		
423		
424		
425		
426		
427		
428		
429		
430		
431		
432		
433		
434		
435		
436		
437		
438		
439		
440		
441		
442		
443		</