

Waukesha Freeman 21 September 1994

Building 2 Bl
Waukesha
H.E. Osborne
House

Historic Homes

H.E. Osborne House

Doug + Rebecca
Turley



The House:

■ **Address:**

201 W. Laffin Ave.

■ **Built:** Circa 1900

■ **Architectural style:**

Queen Anne

■ **Background:** A good

representative of the Queen Anne style as seen in 1890's Waukesha.

■ **Notable characteristics:**

The porch covers a front entrance and merges with a one story, semi-detached pavillion at the northeast corner

■ **Historical significance:**

The house was built for city librarian H.E. Osborne. It is part of the Laffin Avenue Historic District, which was developed by Matthew Laffin, proprietor of the Fountain Spring Hotel complex.

The Turleys have done extensive renovation to their home during the six years they lived there. They have approached the restoration to each room individually.

The Owner:

■ **Name:** Doug and Rebecca Turley

■ **Occupations:** Doug is an electrical engineer for Microelectronic Modules Corp. Rebecca is a physicians' recruitment consultant.

■ **Family:** None

■ **We bought this house because:** The house had character.

■ **We bought this house in:** 1988

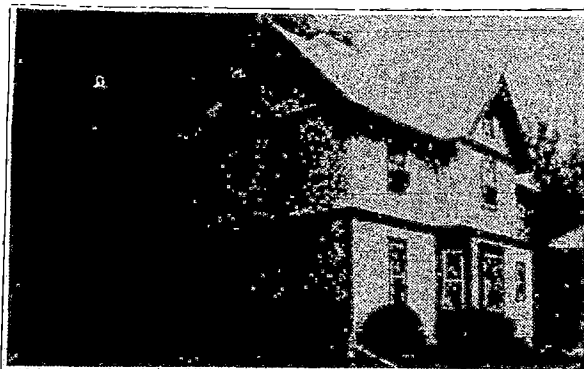
■ **Before we lived here, we lived:** In an apartment in Greenfield

■ **The best thing about living in this house is:** The space and quiet



Pictured are Rebecca, left, Chessle, their Chesapeake Bay retriever, and Doug Turley.

Prior



H. E. Osborne House c. 1900
 201 W. Laflin Avenue
 Built in approximately 1900 for H. E. Osborne, City Librarian, this house is an example of a vernacular design popular during the 1890's. The massing is less complex than Queen Anne designs but has not become as cubical as the Colonial Revival buildings. A semi-detached pavilion, now enclosed, extends across the east side of the house. The two stories are clearly demarcated by belt courses and the front