

X:\MUL\2022\20220310\Design\Graphics\Presentation\2026-02-13\_Site Plan Rendering\CAD Files\C\_00\_L\_100\_Landscape Plan\_0310\_FOR RENDERING 3/8/2026 4:54 PM

**NOTICE:**  
In accordance with Wisconsin statute 182.0175, damage to transmission facilities, excavator shall be solely responsible to provide advance notice to the designated "ONE CALL SYSTEM" not less than three working days prior to commencement of any excavation required to perform work contained on this drawing, and further, excavator shall comply with all other requirements of this statute relative to excavator's work.

**DISCLAIMER:**  
The underground utilities shown have been located from field survey information and existing drawings. GRAEF makes no guarantee that the underground utilities shown comprise all such utilities in the area, either in service or abandoned. GRAEF further does not warrant that the underground utilities shown are in the exact location indicated. GRAEF has not physically located the underground utilities.

**PLANT SCHEDULE**

CODE	BOTANICAL NAME	COMMON NAME	SIZE	QTY
<b>ORNAMENTAL TREES</b>				
ACE GRI	<i>Acer griseum</i>	Paperbark Maple	1.5" BB	6
AME CAN	<i>Amelanchier canadensis</i>	Shadblow Serviceberry	10" multi-stem	3
AME GAB	<i>Amelanchier x grandiflora 'Autumn Brilliance'</i>	Autumn Brilliance Serviceberry	8" multi-stem	4
MAL PRA	<i>Malus 'Prainfire'</i>	Prainfire Crabapple	6-8" BB	5
<b>SHADE TREES</b>				
ACE SGM	<i>Acer saccharum 'Green Mountain'</i>	Green Mountain Maple	2.5" BB	7
CER JAP	<i>Cercidiphyllum japonicum</i>	Katsura Tree	2.5" BB	1
GLE TSH	<i>Gleditsia triacanthos inermis 'Shademaster'</i>	Shademaster Honeylocust	2.5" BB	8
QUE BIC	<i>Quercus bicolor</i>	Swamp White Oak	2.0" BB	1
<b>DECIDUOUS SHRUBS</b>				
DVA XKR	<i>Diervilla x 'G2X885411' TM</i>	Kodiak Red Diervilla	5 gal.	20
HAM VER	<i>Hamamelis vernalis</i>	Vernal Witchhazel	36" ht.	4
HYD AAN	<i>Hydrangea arborescens 'Annabelle'</i>	Annabelle Hydrangea	36" ht.	35
HYD PLQ	<i>Hydrangea paniculata 'SMRPLQF'</i>	Little Quick Fire Hydrangea	36" ht.	18
<b>EVERGREEN SHRUBS</b>				
JUN CIO	<i>Juniperus chinensis 'Iowa'</i>	Iowa Juniper	48" ht.	2
<b>PERENNIALS</b>				
ACH WAL	<i>Achillea millefolium 'Walter Funcke'</i>	Walter Funcke Common Yarrow	1 gal.	6
ALL SUM	<i>Allium x 'Summer Beauty'</i>	Summer Beauty Ornamental Onion	1 gal.	6
AMS HUB	<i>Amsonia hubrichtii</i>	Arkansas Bluestar	1 gal.	4
AMS TAB	<i>Amsonia tabernaemontana</i>	Eastern Bluestar	1 gal.	7
BRU JAC	<i>Brunnera macrophylla 'Jack Frost'</i>	Jack Frost Siberian Bugloss	1 gal.	22
CAL NMO	<i>Calamintha nepeta 'Montrose White'</i>	Montrose White Calamint	1 gal.	4
ECH PMA	<i>Echinacea purpurea 'Magnus'</i>	Magnus Purple Coneflower	1 gal.	25
NEP FWA	<i>Nepeta x 'faassenii' 'Walkers Low'</i>	Walkers Low Catmint	1 gal.	16
PEN DAR	<i>Pensetemon x 'Dark Towers'</i>	Dark Towers Blacktopanga	1 gal.	13
RUD SUB	<i>Rudbeckia subtomentosa</i>	Sweet Black-eyed Susan	1 gal.	23
SAL CAR	<i>Salvia nemorosa 'Caradonna'</i>	Caradonna Meadow Sage	1 gal.	18
<b>ORNAMENTAL GRASSES</b>				
HAK AUR	<i>Hakonechloa macra 'Aureola'</i>	Golden Variegated Forest Grass	1 gal.	17
SCH SCO	<i>Schizachyrium scoparium</i>	Little Bluestem Grass	1 gal.	33
SES AUT	<i>Sesleria autumnalis</i>	Autumn Moor Grass	1 gal.	46
<b>SHRUB AREAS</b>				
PHY SEW	<i>Physocarpus opulifolius 'Seward'</i>	Summer Wine® Ninebark	#3	25
<b>PERENNIAL AREAS</b>				
HOS GUZ	<i>Hosta x 'Guacamole'</i>	Guacamole Hosta	1 gal.	80

**LANDSCAPE LEGEND**

- SEE SPECIFICATIONS
- BIKE RACK  
Manufacturer: Dero  
Type: Rolling Rack RR4H  
Finish: Powder Coat - Black  
Mount: Surface, per manufacturers recommendations  
Length: 4H
  - ALUMINUM EDGER
  - EXISTING TREES TO REMAIN
  - SHADE TREE
  - ORNAMENTAL TREE
  - MANICURED TURF (SOD & SEED)
  - SHREDDED BARK MULCH, 3" DEPTH
  - PLANT BEDS: SHRUBS, PERENNIALS, & ORNAMENTAL GRASSES
  - BIO-BASIN SEED MIX
  - DECORATIVE STONE, 3" DEPTH AMERICAN HERITAGE, MEDIUM, BY HALQUIST STONE, OR APPROVED EQUAL
  - CRUSHED GRANITE, 3" COMPACTED WAX POLYMER GRAVEL PAVING

Revisions  
12/3/2025 ADDENDUM #01

**BID DOCUMENTS**

**SCOPE DOCUMENTS**

Drawing Date  
08.11.2025

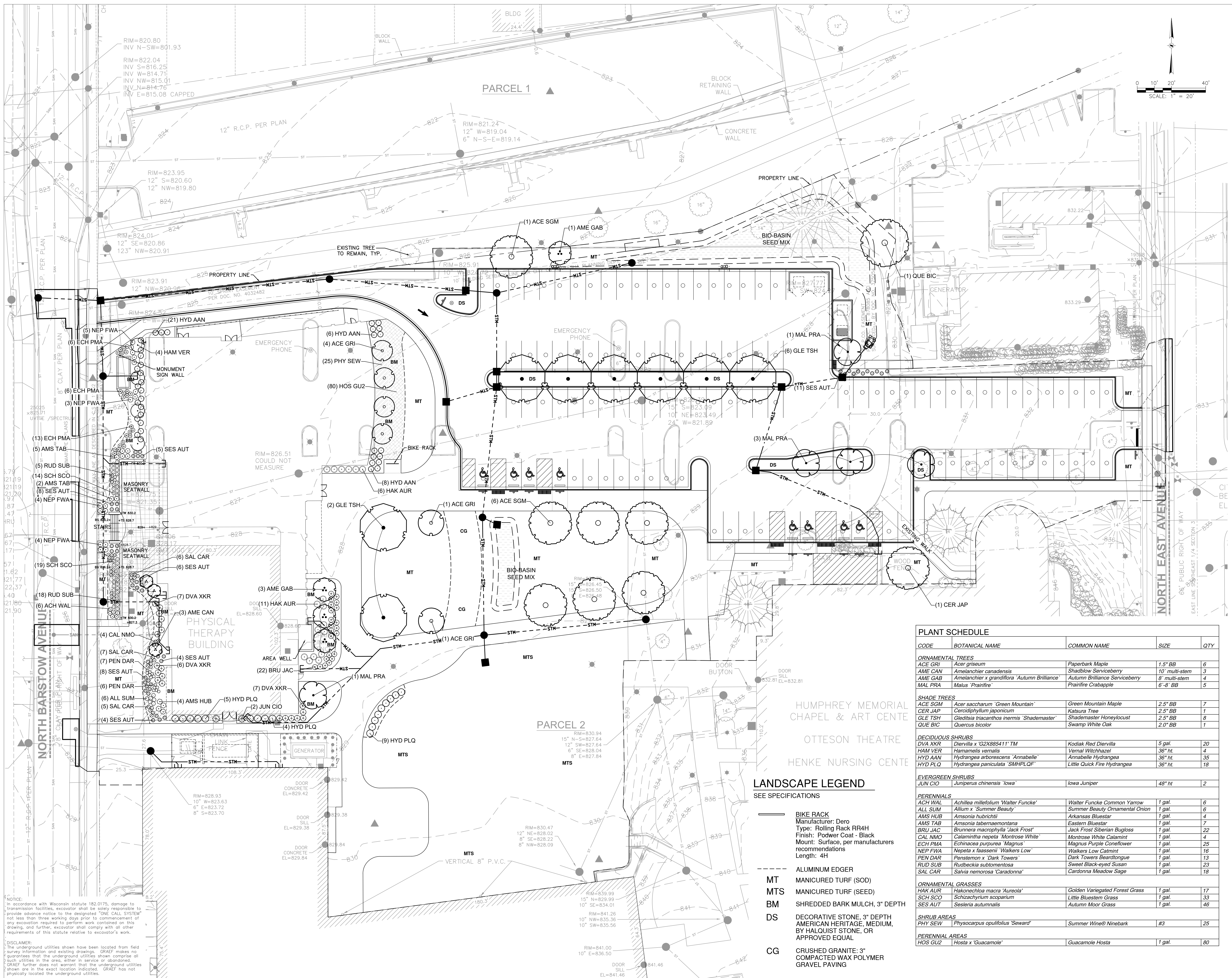
**SULLIVAN SCHOOL OF BUSINESS & TECHNOLOGY**

245 N. Barstow St.  
Waukesha, WI 53186

Project No. CARROLL UNIVERSITY  
221071.00

**RENDERED LANDSCAPE PLAN**

Copyright © 2022 Kahler Slater, Inc. All rights reserved.  
750 N Water Street, Suite 1700, Milwaukee, Wisconsin 53202  
Telephone 414.272.2000 Fax 414.272.2011  
104 Shockoe Slip, Richmond, Virginia 23219  
722 Williamson Street, Madison, Wisconsin 53703  
Telephone 608.281.8300 Fax 608.281.8317  
150 N Wacker Drive, Suite 1700, Chicago, Illinois 60606  
Telephone 312.789.4516  
Sheet No.  
L000



Revisions  
12/3/2025 ADDENDUM #01

BID DOCUMENTS

SCOPE DOCUMENTS

Drawing Date  
08.11.2025

SULLIVAN SCHOOL OF BUSINESS & TECHNOLOGY

245 N. Barstow St.  
Waukesha, WI 53186

Project No. CARROLL UNIVERSITY  
221071.00

Sheet Title  
LANDSCAPE PLAN

Copyright © 2022 Kahler Slater, Inc. All rights reserved.  
760 N Water Street, Suite 1700, Milwaukee, Wisconsin 53202  
Telephone 414.272.2000 Fax 414.272.2011

104 Shockoe Site, Richmond, Virginia 23219  
722 Williamson Street, Madison, Wisconsin 53703  
Telephone 608.268.6300 Fax 608.268.6317

150 N Wacker Drive, Suite 1700, Chicago, Illinois 60606  
Telephone 312.789.4516

Sheet No.  
L100

CODE	BOTANICAL NAME	COMMON NAME	SIZE	QTY
<b>ORNAMENTAL TREES</b>				
ACE GRI	<i>Acer griseum</i>	Paperbark Maple	1.5" BB	6
AME CAN	<i>Amelanchier canadensis</i>	Shadow Serviceberry	10" multi-stem	3
AME GAB	<i>Amelanchier x grandiflora 'Autumn Brilliance'</i>	Autumn Brilliance Serviceberry	6" multi-stem	4
MAL PRA	<i>Malus 'Prainfire'</i>	Prainfire Crabapple	6-8" BB	5
<b>SHADE TREES</b>				
ACE SGM	<i>Acer saccharum 'Green Mountain'</i>	Green Mountain Maple	2.5" BB	7
CER JAP	<i>Cercidiphyllum japonicum</i>	Katsura Tree	2.5" BB	1
GLE TSH	<i>Gleditsia triacanthos inermis 'Shademaster'</i>	Shademaster Honeylocust	2.5" BB	8
QUE BIC	<i>Quercus bicolor</i>	Swamp White Oak	2.0" BB	1
<b>DECIDUOUS SHRUBS</b>				
DVA XKR	<i>Diervilla x 'G2X885411' TM</i>	Kodiak Red Diervilla	5 gal.	20
HAM VER	<i>Hamamelis vernalis</i>	Vernal Witchhazel	36" ht.	4
HYD AAN	<i>Hydrangea arborescens 'Annabelle'</i>	Annabelle Hydrangea	36" ht.	35
HYD PLQ	<i>Hydrangea paniculata 'SMRPLQF'</i>	Little Quick Fire Hydrangea	36" ht.	18
<b>EVERGREEN SHRUBS</b>				
JUN CIO	<i>Juniperus chinensis 'Iowa'</i>	Iowa Juniper	48" ht.	2
<b>PERENNIALS</b>				
ACH WAL	<i>Achillea millefolium 'Walter Funcke'</i>	Walter Funcke Common Yarrow	1 gal.	6
ALL SUM	<i>Allium x 'Summer Beauty'</i>	Summer Beauty Ornamental Onion	1 gal.	6
AMS HUB	<i>Amsonia hubrichtii</i>	Arkansas Bluestar	1 gal.	4
AMS TAB	<i>Amsonia tabernaemontana</i>	Eastern Bluestar	1 gal.	7
BRU JAC	<i>Brunera macrophylla 'Jack Frost'</i>	Jack Frost Siberian Bugloss	1 gal.	22
CAL NMO	<i>Calamintha nepeta 'Montrose White'</i>	Montrose White Calamint	1 gal.	4
ECH PMA	<i>Echinacea purpurea 'Magnus'</i>	Magnus Purple Coneflower	1 gal.	25
NEP FWA	<i>Nepeta x 'faassenii' 'Walkers Low'</i>	Walkers Low Catmint	1 gal.	16
PEN DAR	<i>Pensstemon x 'Dark Towers'</i>	Dark Towers Beardtongue	1 gal.	13
RUD SUB	<i>Rudbeckia subtomentosa</i>	Sweet Little Black-eyed Susan	1 gal.	23
SAL CAR	<i>Salvia nemorosa 'Caradonna'</i>	Caradonna Meadow Sage	1 gal.	18
<b>ORNAMENTAL GRASSES</b>				
HAK AUR	<i>Hakonechloa macra 'Aureola'</i>	Golden Variegated Forest Grass	1 gal.	17
SCH SCO	<i>Schizachyrium scoparium</i>	Little Bluestem Grass	1 gal.	33
SES AUT	<i>Sesleria autumnalis</i>	Autumn Moor Grass	1 gal.	46
<b>SHRUB AREAS</b>				
PHY SEW	<i>Physocarpus opulifolius 'Seward'</i>	Summer Wine® Ninebark	#3	25
<b>PERENNIAL AREAS</b>				
HOS GUZ	<i>Hosta x 'Guacamole'</i>	Guacamole Hosta	1 gal.	80

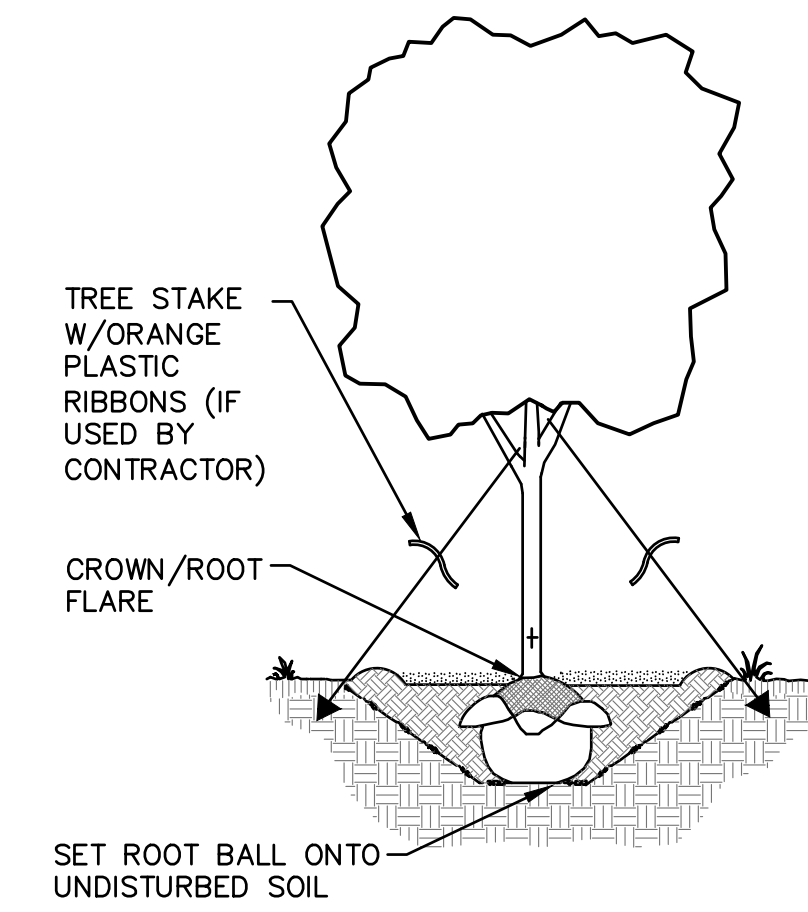
LANDSCAPE LEGEND  
SEE SPECIFICATIONS

- BIKE RACK  
Manufacturer: Dero  
Type: Rolling Rack RR4H  
Finish: Powder Coat - Black  
Mount: Surface, per manufacturers recommendations  
Length: 4H
- ALUMINUM EDGER
- MT MANICURED TURF (SOD)
- MTS MANICURED TURF (SEED)
- BM SHREDDED BARK MULCH, 3" DEPTH
- DS DECORATIVE STONE, 3" DEPTH AMERICAN HERITAGE, MEDIUM, BY HALQUIST STONE, OR APPROVED EQUAL
- CG CRUSHED GRANITE, 3" COMPACTED WAX POLYMER GRAVEL PAVING

X:\MUL2022\20220310\Design\Civil\010C\_00\_L100\_Landscape Plan\_0310  
3/13/2026 11:59 AM

NOTICE:  
In accordance with Wisconsin statute 182.0175, damage to transmission facilities, excavator shall be solely responsible to provide advance notice to the designated "ONE CALL SYSTEM" not less than three working days prior to commencement of any excavation required to perform work contained on this drawing, and further, excavator shall comply with all other requirements of this statute relative to excavator's work.

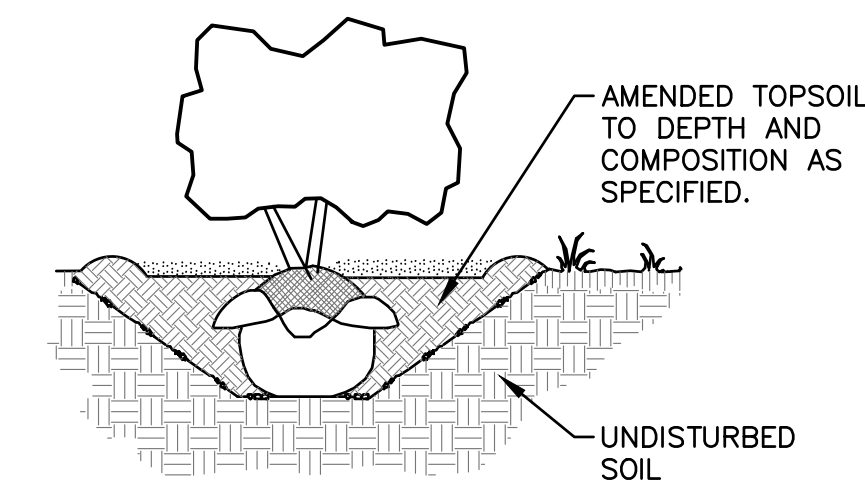
DISCLAIMER:  
The underground utilities shown have been located from field survey information and existing drawings. GRAEF makes no guarantee that the underground utilities shown comprise all such utilities in the area, either in service or abandoned. GRAEF further does not warrant that the underground utilities shown are in the exact location indicated. GRAEF has not physically located the underground utilities.



- PRIOR TO DIGGING TREE, MARK NORTH SIDE OF TRUNK. INSTALL TREE IN SAME ORIENTATION.
- EXCAVATE PLANTING PIT 3-TIMES THE DIA. & APPROXIMATELY THE HEIGHT OF ROOT BALL DEPTH. ROOT FLARE SHALL BE AT OR SLIGHTLY HIGHER THAN ADJACENT F.G.
- LOOSEN SUBSOIL W/PICK TO ENSURE POROSITY.
- SELECT BEST VIEWING ANGLE, LIFT STOCK BY BALL AND PLACE IN PLANTING PIT.
- CUT AND REMOVE ALL STRING AND WIRE AND UNWRAP TOP HALF OF ROOT BALL. BACKFILL PLANTING PIT WITH EXISTING SOIL UP TO BASE OF ROOT FLARE.
- PACK BACKFILL AROUND BASE OF ROOT BALL TO STABILIZE IT.
- BACKFILL REMAINDER OF PLANTING HOLE USING WATER PERIODICALLY TO REDUCE AIR POCKETS.
- FORM 3" HT. SAUCER IN 6"-0" DIAMETER AROUND TREE & FILL WITH 3" MULCH.
- KEEP MULCH 1-2 INCHES AWAY FROM TRUNK.
- WATER IMMEDIATELY & FREQUENTLY.
- PLANT SIZES SPECIFIED ARE MINIMUM ACCEPTABLE.

1 TREE PLANTING DETAIL

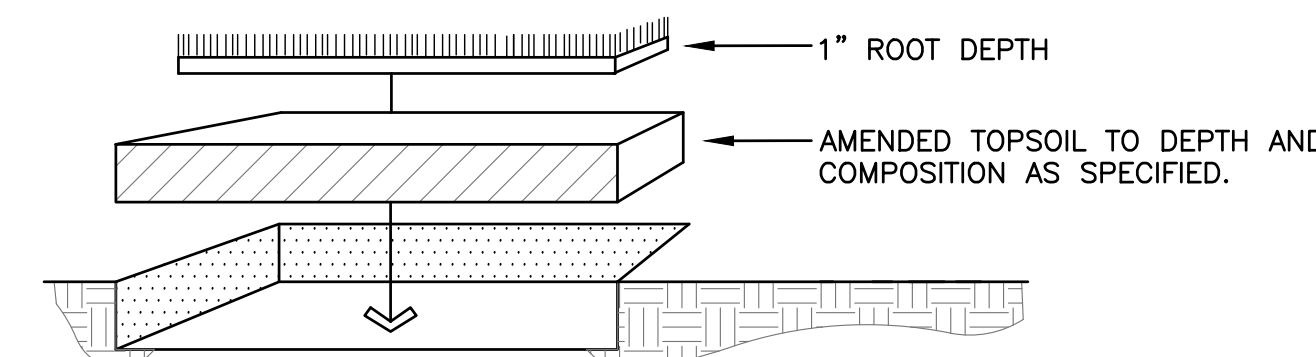
- EXCAVATE PLANTING PIT TWICE THE DIAMETER OF BALL & EQUAL IN DEPTH
- LOOSEN SUBSOIL W/PICK TO ENSURE POROSITY
- PLACE PLANTING SOIL IN PLANTING PIT & FOOT TAMP
- SELECT BEST VIEWING ANGLE, LIFT STOCK BY BALL & PLACE IN PLANTING PIT
- UNWRAP TOP HALF OF ROOT BALL
- BACKFILL TO FINISHED GRADE WITH AMENDED TOPSOIL & TAMP
- FORM 3" SAUCER TO ENCIRCLE STOCK & FILL WITH 3" MULCH
- WATER IMMEDIATELY & FREQUENTLY.
- PLANT SIZES SPECIFIED ARE MINIMUM ACCEPTABLE



2 SHRUB PLANTING DETAIL

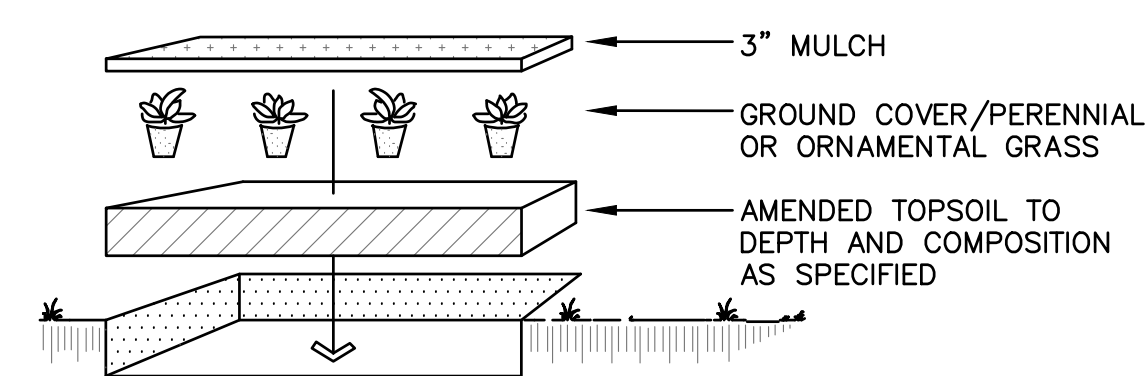
See planting plan for locations.  
Application rate = 9lbs per acre

Wildflowers		Oz/Acre
Alisma subcordatum	Mud Plantain	2.00
Asclepias incarnata	Marsh (Red) Milkweed	6.00
Aster novae-angliae	New England Aster	2.00
Desmodium canadense	Canada Tick Trefoil	4.00
Ratibida pinnata	Yellow Coneflower	3.00
Rudbeckia hirta	Black-Eyed Susan	2.00
Rudbeckia subtomentosa	Sweet Black-Eyed Susan	2.00
Solidago ohioensis	Ohio Goldenrod	1.00
Verbena hastata	Blue Vervain	1.75
Vernonia fasciculata	Ironweed	2.00
Grasses, Sedges, & Rushes		Oz/Acre
Andropogon gerardii	Big Bluestem	10.00
Bromus ciliatus	Fringed Brome	36.00
Carex comosa	Bristly Sedge	5.00
Carex vulpinoidea	Brown Fox Sedge	1.50
Elymus virginicus	Virginia Wild Rye	36.00
Glyceria striata	Fowl Manna Grass	2.00
Panicum virgatum	Switchgrass	3.00
Scirpus atrovirens	Dark-Green Bulrush	0.50
Scirpus cyperinus	Wool Grass	0.25
Sorghastrum nutans	Indian Grass	16.00
Spartina pectinata	Prairie Cordgrass	8.00



- TOPSOIL SHALL CONFORM TO PROPERTIES AS SPECIFIED.
- CONTRACTOR TO PROVIDE FINISHED TURF GRADE PER DRAWINGS WITH UNIFORM, NATURAL SLOPES PRIOR TO LAYING SOD. SOD BLEND & APPLICATION PROCEDURES ARE DESCRIBED IN WRITTEN SPECIFICATION
- LAY SOD IN "RUNNING BOND" FASHION (W/ALTERNATE JOINTS). COMPRESS EACH BUTT JOINT TO REDUCE SHRINKAGE CRACKS. ANCHOR SOD APPLICATIONS ON SLOPES GREATER THAN 1:3 W/10" WOOD PEGS.
- LANDSCAPE CONTRACTOR SHALL ESTABLISH VIGOROUS GROWTH AND MOW & MAINTAIN AS SPECIFIED.

4 MANICURED TURF SOD



- LAYOUT PLANT MATERIAL AT SPACING AS SHOWN PER PLANT MATERIALS SCHEDULE
- HAND BROADCAST UNIFORM 3" MULCH THROUGHOUT PLANTING BED
- FLOOD IMMEDIATELY & WATER FREQUENTLY PER WRITTEN SPECIFICATIONS
- PLANT SIZES SPECIFIED ARE MINIMUM ACCEPTABLE

3 GROUND COVER / ORNAMENTAL GRASS / PERENNIAL PLANTING DETAIL

LANDSCAPING NOTES:

1. VERIFY EXISTING AND PROPOSED CONDITIONS, UTILITIES, PIPES, AND STRUCTURES, ETC. PRIOR TO BIDDING AND CONSTRUCTION.
2. INSPECT THE SITE PRIOR TO COMMENCING WORK. DOCUMENT IN WRITING AND PHOTOGRAPH EXISTING CONDITIONS WITHIN, AND IN AREAS ADJACENT TO THE LIMITS OF CONSTRUCTION. PROVIDE DIGITAL COPIES OF PHOTOGRAPHS TO THE LANDSCAPE ARCHITECT. THE LANDSCAPE CONTRACTOR IS RESPONSIBLE FOR ANY DAMAGES NOT DOCUMENTED IN THE SUBMITTAL PRIOR TO COMMENCEMENT OF DEMOLITION ACTIVITIES.
3. SEE WRITTEN SPECIFICATIONS AND DETAILS FOR PLANTING METHODS, REQUIREMENTS, SOIL TESTING, MATERIALS, EXECUTION AND PLANT PROTECTION, PLANT STAKING METHODS, PLANT PIT DIMENSIONS, BACKFILL AND OTHER RELATED REQUIREMENTS.
4. PLANT PLACEMENT IS REQUIRED AS SHOWN ON THE LAYOUT, PLANTING, AND OTHER DRAWINGS.
5. PLANT NAMES ARE ABBREVIATED ON THE DRAWINGS. SEE PLANT LIST FOR SYMBOLS, ABBREVIATIONS, BOTANICAL/COMMON NAMES, SIZES, ESTIMATED QUANTITIES (IF GIVEN) AND OTHER REMARKS.
6. MAINTAIN AND WARRANT PLANT MATERIALS AS DESCRIBED IN WRITTEN SPECIFICATIONS.
7. PLANT BEDS AND TREE PLANTING PITS ARE TO RECEIVE 3" DEEP LAYER OF DECORATIVE STONE OR MULCH PER WRITTEN SPECIFICATIONS AND DETAILS. REFER TO DRAWINGS FOR LOCATIONS.
8. FORM 72-INCH, OR AS OTHERWISE INDICATED, WATERING BASIN AROUND TREES NOT INSTALLED IN PAVED AREAS.
9. MAINTAIN 72-INCH DIAMETER MINIMUM CLEAR SOIL AREA AROUND ALL TREES IN MANICURED TURF AREAS. SHOVEL CUT TREE RINGS AND MULCH WITH SPECIFIED DEPTH OF MULCH. SEE PLANTING DETAILS.
10. FINE GRADE, RAKE, AND ENSURE POSITIVE DRAINAGE AWAY FROM STRUCTURES AND THROUGHOUT SITE WITHIN THE LIMITS OF CONSTRUCTION, WITH ACCURATELY SET FLOW LINES. LOW SPOTS OR PONDING OF SURFACE WATER WILL NOT BE ACCEPTED IN THE FINAL WORK. ROCKS OR DEBRIS WILL NOT BE ACCEPTED. FINAL GRADE TOLERANCES ARE +/-0.1 FOOT MAXIMUM.
11. WHERE PROVIDED, AREA TAKEOFFS AND PLANT QUANTITY ESTIMATES ARE FOR INFORMATION ONLY. LANDSCAPE CONTRACTOR IS RESPONSIBLE TO CONDUCT QUANTITY TAKE-OFFS FOR PLANT MATERIALS AND SIZES SHOWN ON PLANS. PLANT SYMBOLS INDICATED ON THE PLAN TAKE PRECEDENCE IN CASE OF DISCREPANCIES BETWEEN CALLOUTS AND THE PLANT LIST.
12. COORDINATE THE INSTALLATION OF PLANT MATERIAL WITH INSTALLATION OF ADJACENT PAVEMENTS, DRAINAGE, CURB AND RELATED STRUCTURES WITH OTHER TRADES.
13. RESTORE AREAS OF THE SITE, OR ADJACENT AREAS, WHERE DISTURBED. DAMAGE CAUSED DURING LANDSCAPE INSTALLATION TO EXISTING CONDITIONS AND IMPROVEMENTS IS THE RESPONSIBILITY OF THE LANDSCAPE CONTRACTOR.
14. UNLESS OTHERWISE INDICATED, PLACE SHRUBS, PERENNIALS AND ORNAMENTAL GRASSES IN STRAIGHT ROWS, EQUALLY SPACED.
15. FOLLOWING TESTING & ANALYSIS OF TOPSOIL, INCORPORATION OF RECOMMENDED AMENDMENTS, AND TOPSOIL PLACEMENT, ALL PLANT BED AREAS SHALL BE PREPARED AS DESCRIBED IN WRITTEN SPECIFICATIONS.
16. TAKE NECESSARY SCHEDULING AND OTHER PRECAUTIONS TO AVOID WINTER, CLIMATIC, OR OTHER DAMAGE TO PLANTS.
17. PLANTING BEDS ARE TO BE SEPARATED FROM ADJACENT TURF AREAS WITH ALUMINUM EDGING AS SPECIFIED ON DRAWINGS. INSTALL AT LOCATIONS INDICATED ON DRAWINGS AND PER LANDSCAPE DETAILS.
18. PLANT SUBSTITUTIONS WILL NOT BE PERMITTED UNLESS THE LANDSCAPE CONTRACTOR CAN DEMONSTRATE THE PLANTS ARE NOT AVAILABLE FROM NURSERY SOURCES LOCATED WITHIN 100 MILES FROM THE PROJECT SITE. ANY PROPOSED PLANT SUBSTITUTION WILL REQUIRE PRIOR REVIEW AND WRITTEN ACCEPTANCE BY THE LANDSCAPE ARCHITECT.
19. PROVIDE TREE STAKING AS DESCRIBED IN WRITTEN SPECIFICATIONS.

5 BIO-BASIN SEED MIX

Revisions

BID DOCUMENTS

SCOPE DOCUMENTS

Drawing Date  
08.11.2025

SULLIVAN SCHOOL OF BUSINESS & TECHNOLOGY

245 N. Barstow St.  
Waukesha, WI 53186

Project No. CARROLL UNIVERSITY  
221071.00

Sheet Title  
LANDSCAPE NOTES & DETAILS

Copyright © 2022 Kahler Slater, Inc. All rights reserved.  
750 N Water Street, Suite 1700, Milwaukee, Wisconsin 53202  
Telephone 414.272.2000 Fax 414.272.2011

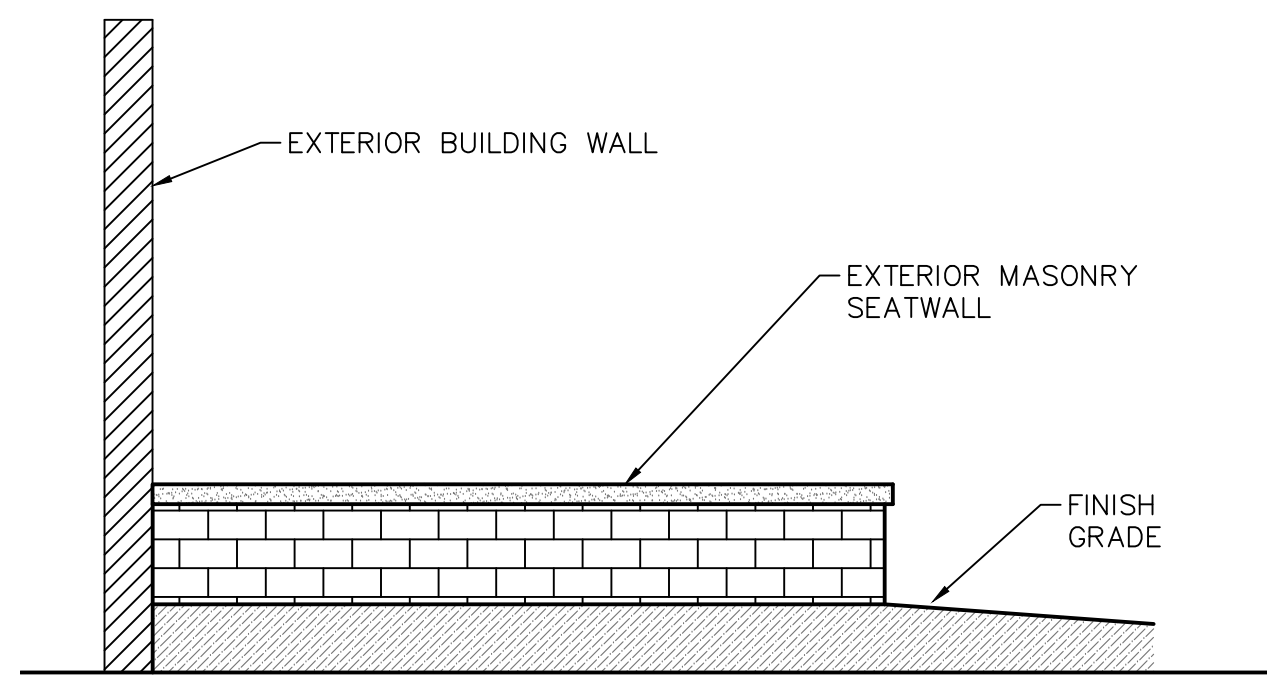
104 Shockey Sig, Richmond, Virginia 23219  
Telephone 804.787.2500

722 Williamson Street, Madison, Wisconsin 53703  
Telephone 608.283.6300 Fax 608.283.6317

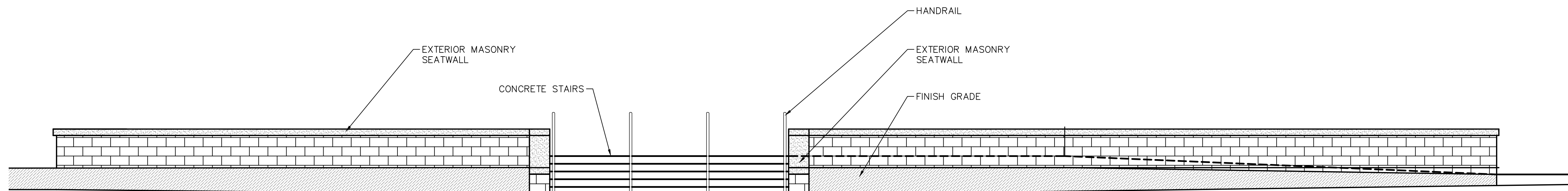
150 N Wacker Drive, Suite 1700, Chicago, Illinois 60606  
Telephone 312.299.4516

Sheet No.

L900



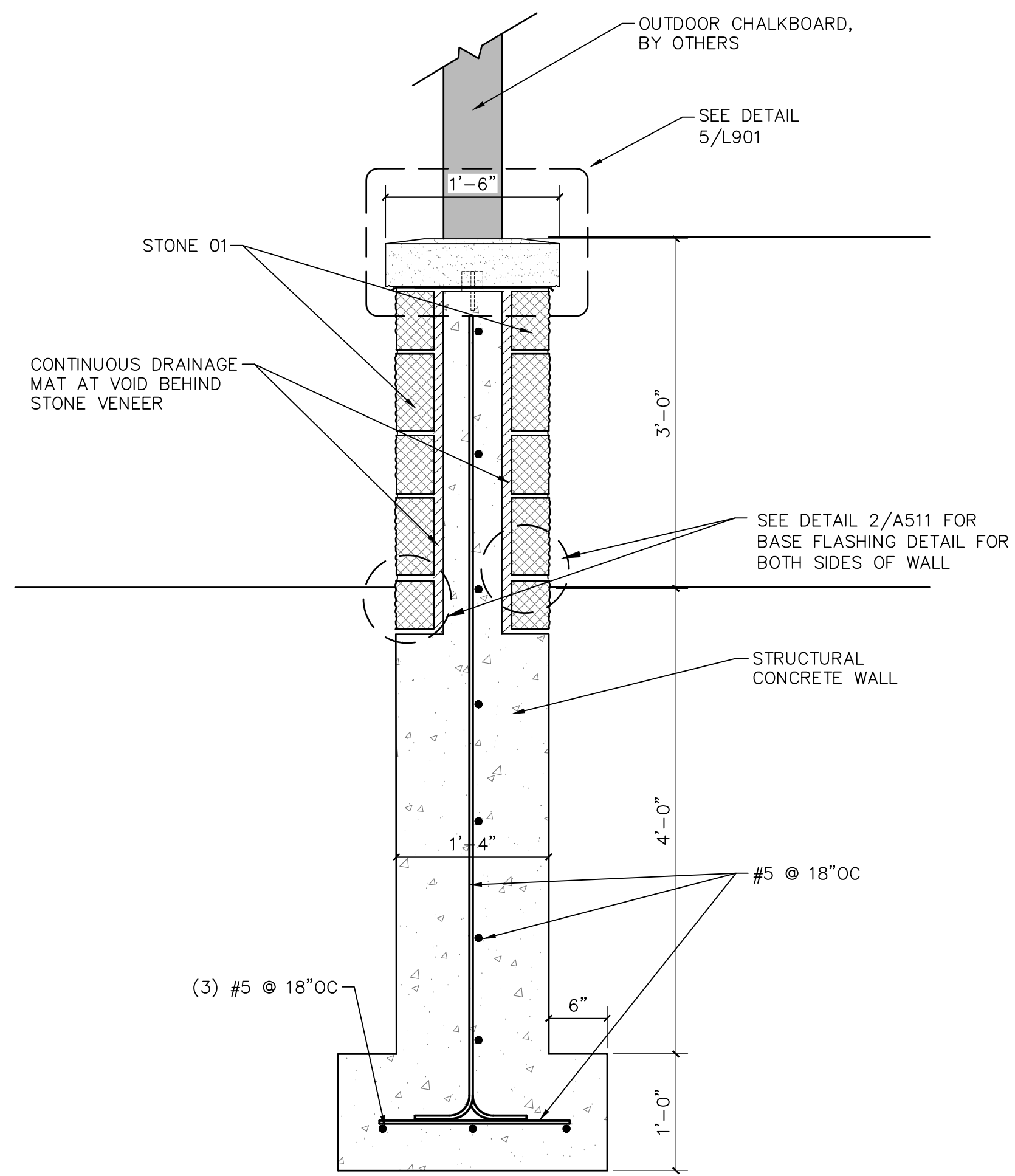
NORTH ELEVATION



WEST ELEVATION

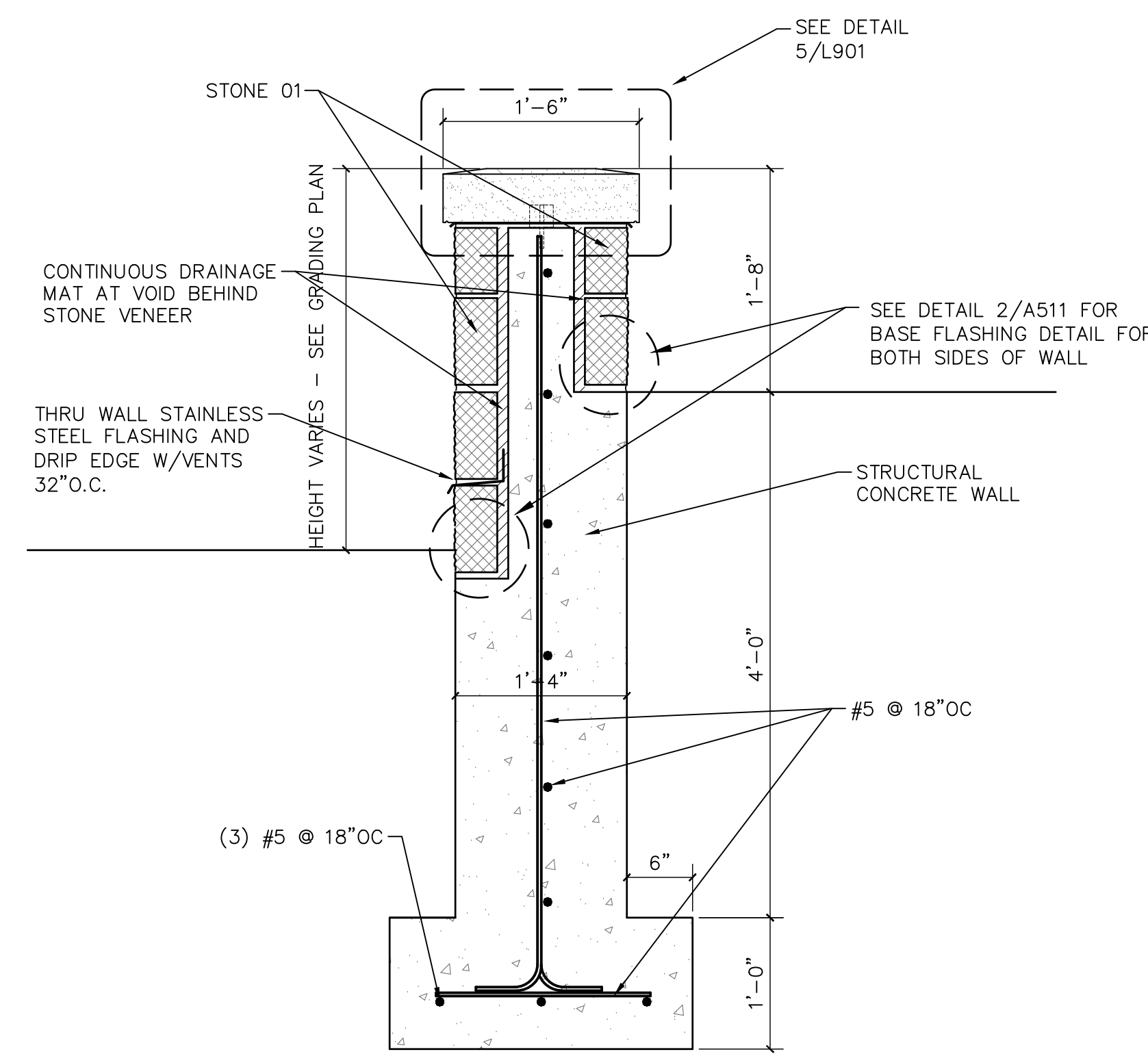
1 FRONT ENTRY - STONE WALL ELEVATIONS

3" = 1'-0"



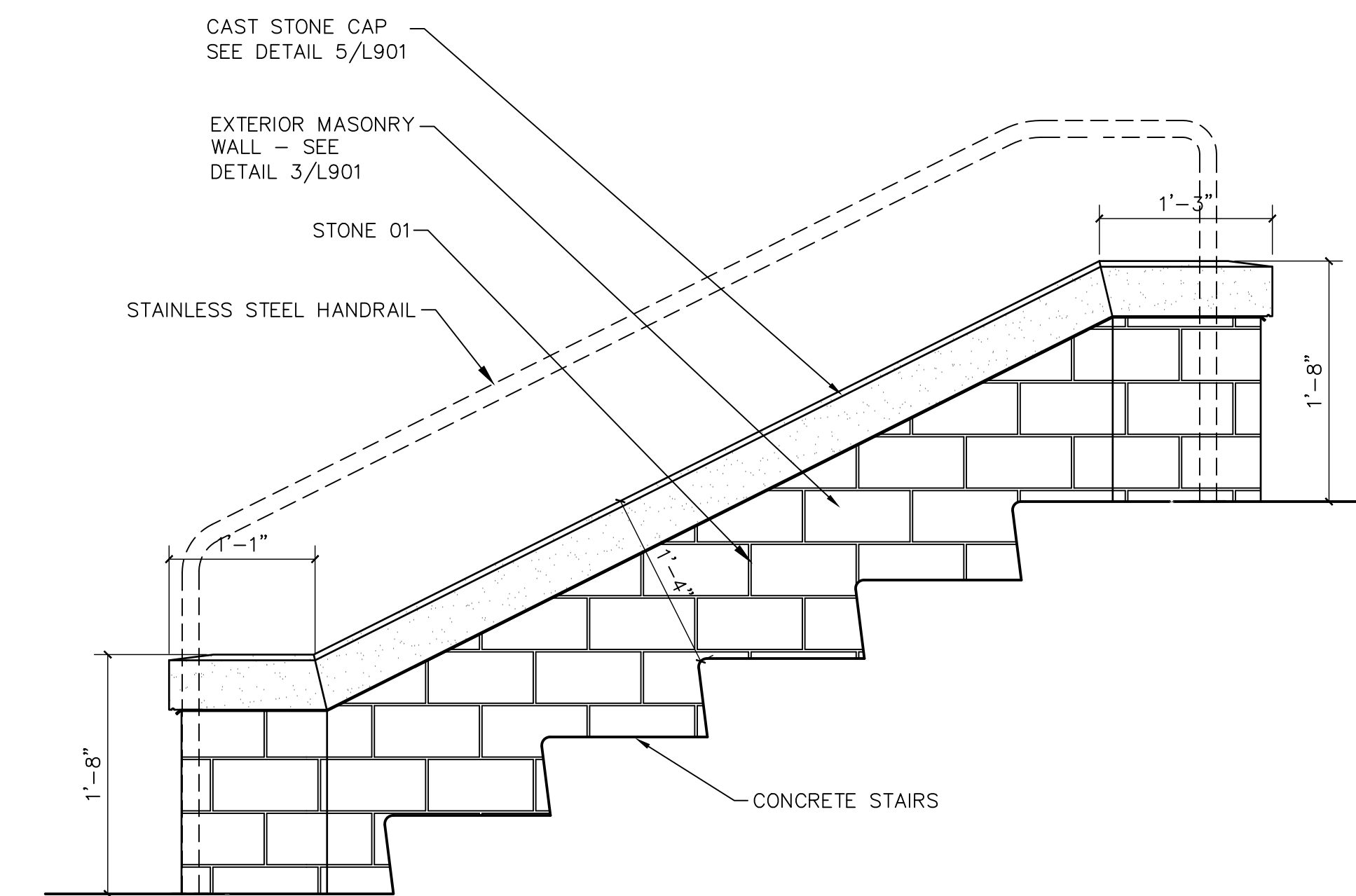
4 SECTION - MASONRY WALL/CHALKBOARD

1" = 1'-0"



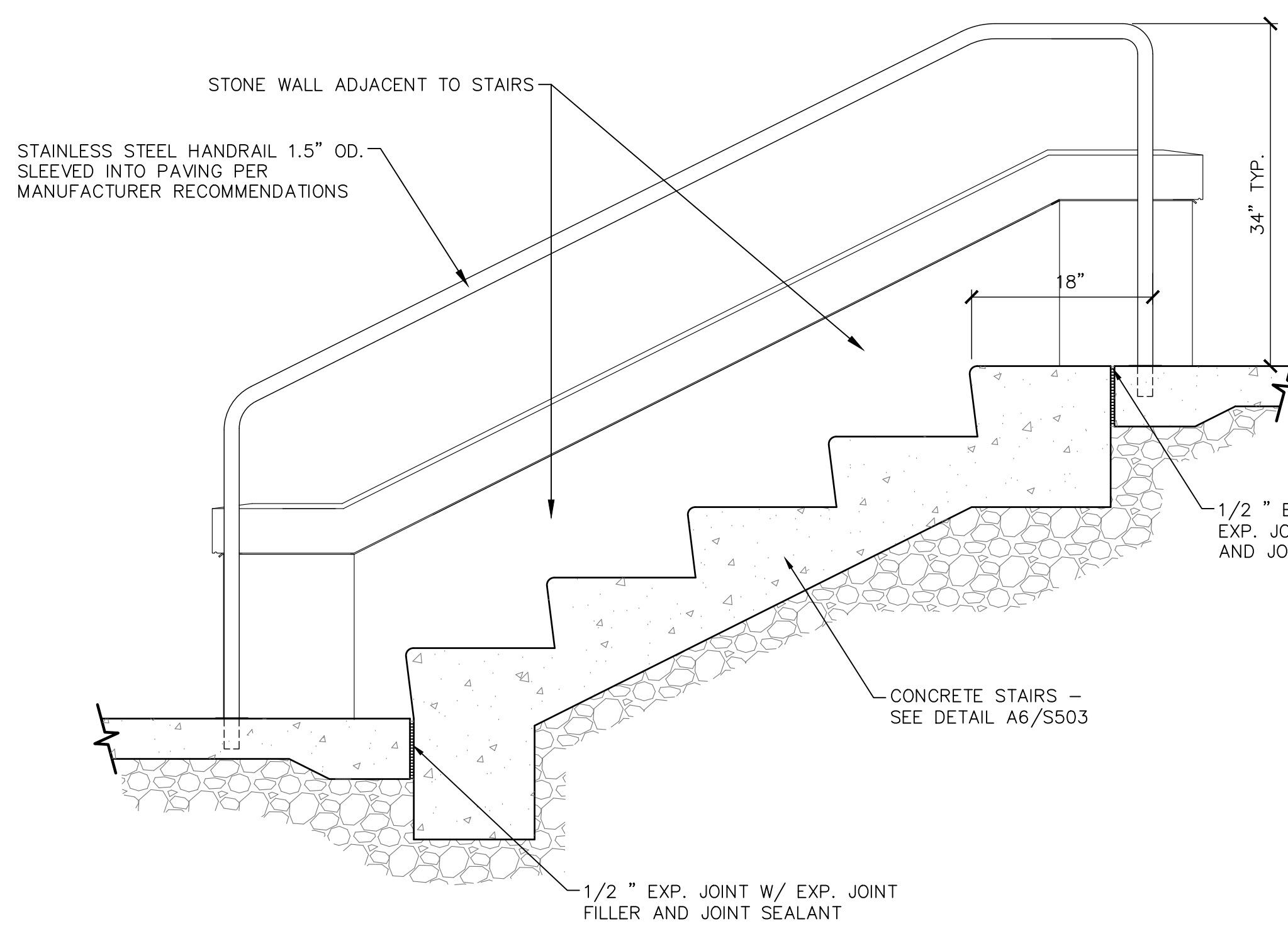
3 SECTION - MASONRY WALL @ FRONT ENTRANCE

1" = 1'-0"



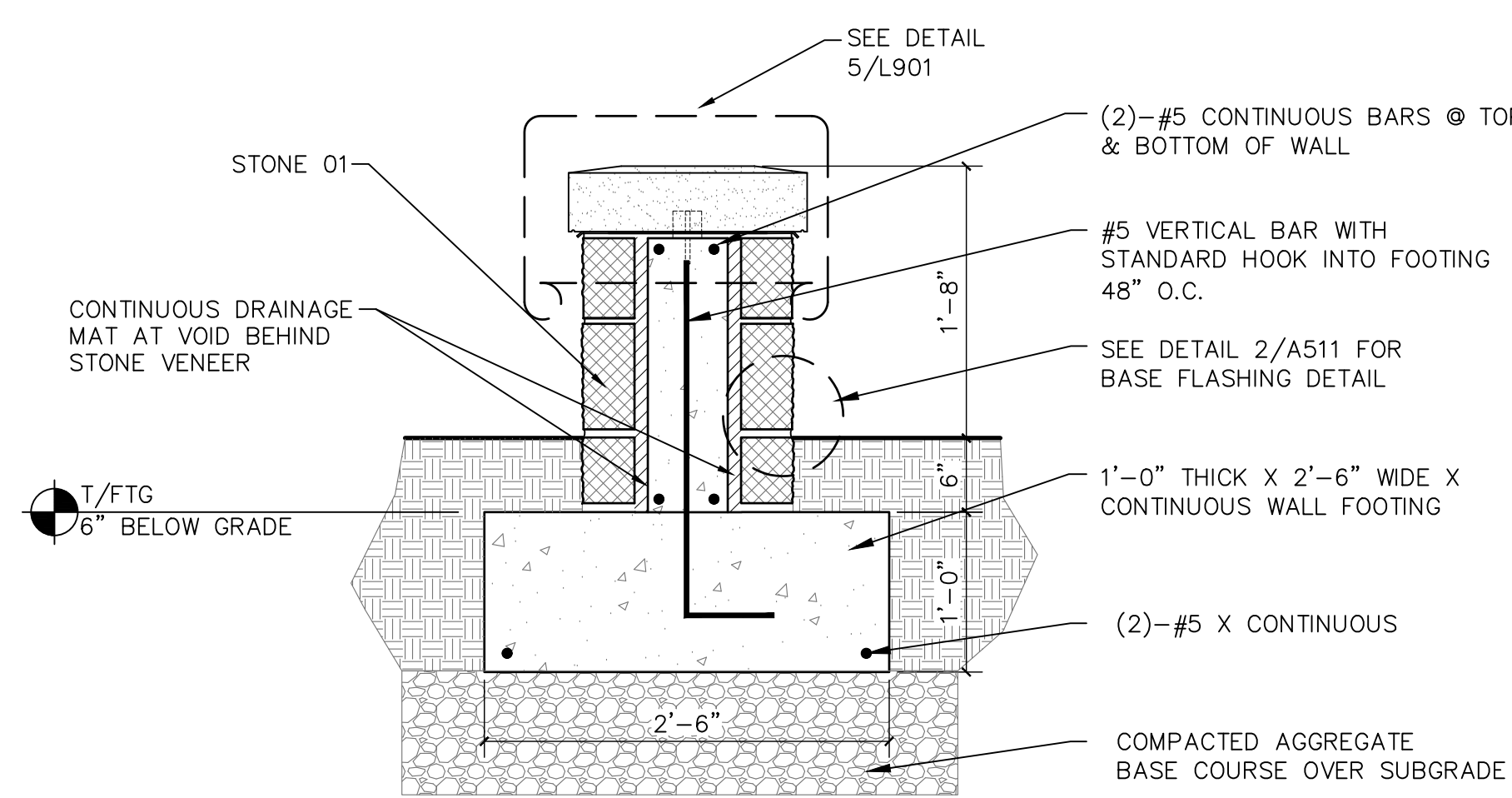
2 STAIR WALL ELEVATION DETAIL

1" = 1'-0"



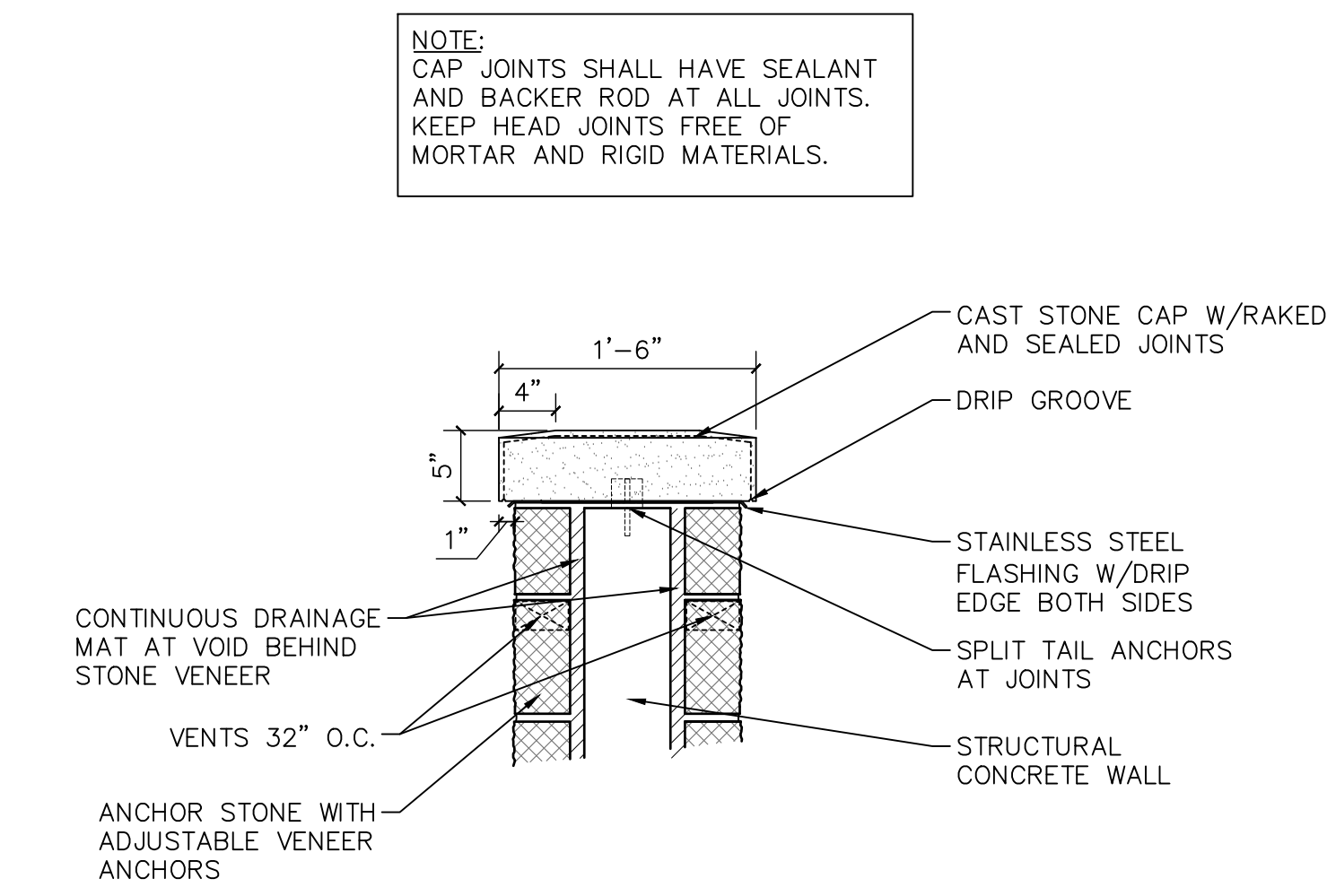
6 HANDRAIL DETAIL @ STAIR

1" = 1'-0"



4 SECTION - SEAT WALL @ OUTDOOR CLASSROOM

1" = 1'-0"



5 TYPICAL WALL CAP DETAIL

1" = 1'-0"

GENERAL MASONRY DETAIL NOTES:

SEE SPECIFICATION SECTION 04 2000 - UNIT MASONRY FOR ALL WALL MATERIALS AND INSTALLATION REQUIREMENTS.

Revisions

BID DOCUMENTS

SCOPE DOCUMENTS

Drawing Date  
08.11.2025

SULLIVAN SCHOOL OF BUSINESS & TECHNOLOGY

245 N. Barstow St.  
Waukesha, WI 53186

Project No. CARROLL UNIVERSITY  
221071.00

STAIR & WALL DETAILS

Copyright © 2022 Kahler Slater, Inc. All rights reserved.  
750 N Water Street, Suite 1700, Milwaukee, Wisconsin 53202  
Telephone 414.272.2500 Fax 414.272.2011

104 Shockoe Slip, Richmond, Virginia 23219  
Telephone 804.797.2500

722 Williamson Street, Madison, Wisconsin 53703  
Telephone 608.263.6300 Fax 608.263.6317

150 N Wacker Drive, Suite 1700, Chicago, Illinois 60606  
Telephone 312.789.4516

Sheet No.  
L901