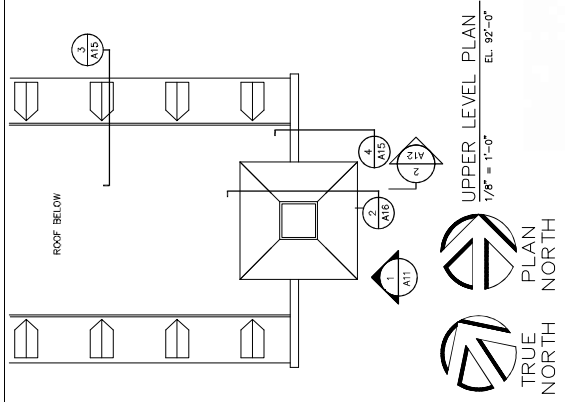


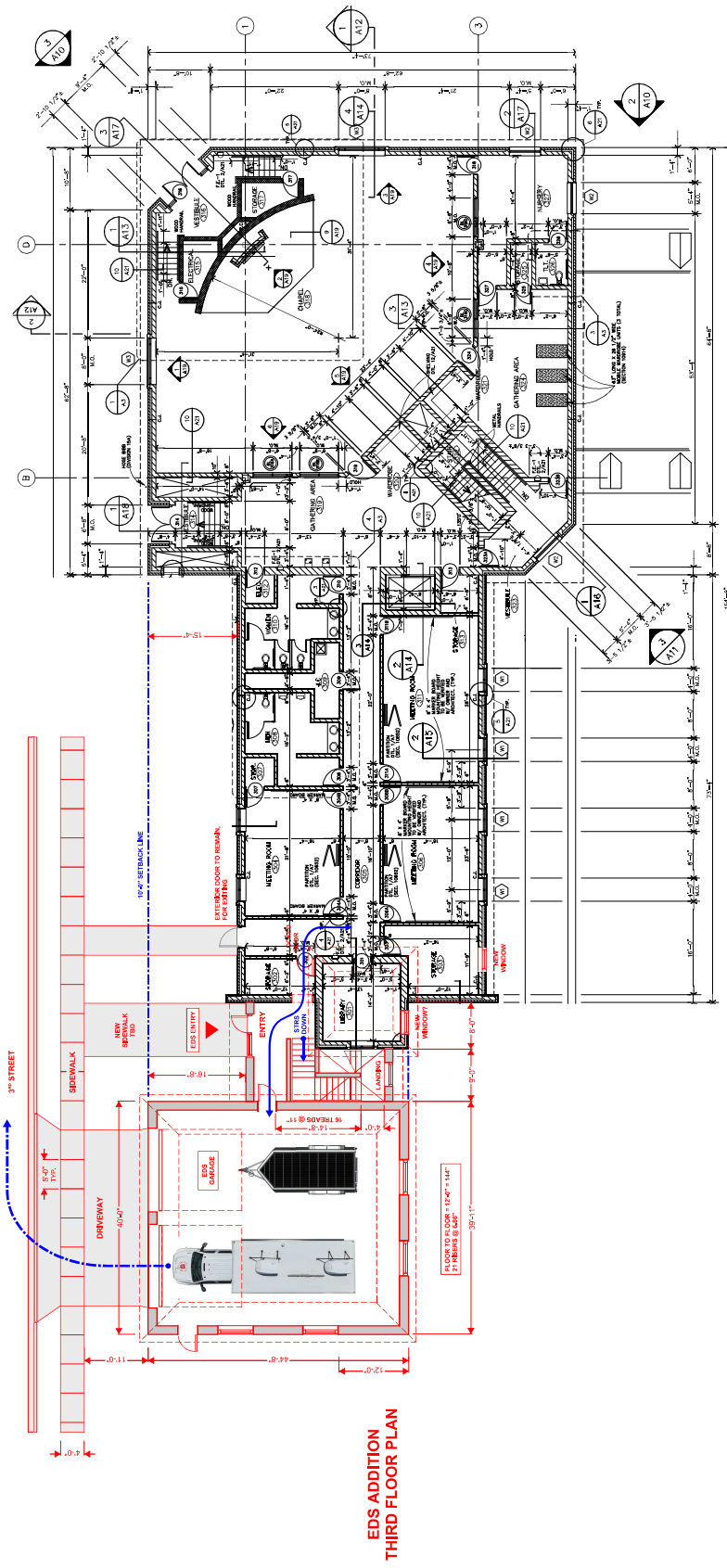
**EDS ADDITION
THIRD FLOOR PLAN**



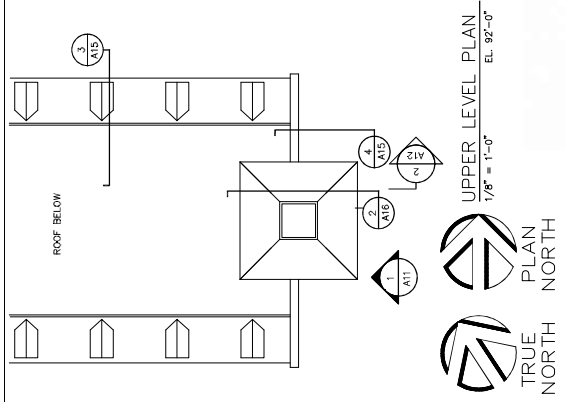
EDS Building Addition | The Salvation Army of Waukesha County
 445 Madison Street | Waukesha, Wisconsin
 May 22, 2026 | FFT Project No. 25050



FISCHER-FISCHER-THEIS, INC.
 ARCHITECTS • ENGINEERS • PLANNERS
 1000 W. WISCONSIN AVENUE
 SUITE 200
 WAUKESHA, WI 53186
 C: 262.541.4889
 OFFICE@FFTHEIS.COM



**EDS ADDITION
THIRD FLOOR PLAN**



UPPER LEVEL PLAN
1/8" = 1'-0"
EL. 92'-0"