



City of Waukesha
201 Delafield Street
Waukesha, WI 53188
Tel: 262.542.3700
waukesha-wi.gov

City of Waukesha Cover Sheet

Committee: Building and Grounds	Meeting Date: October 6, 2025
ID Number: ID#25-02217	Ordinance/Resolution Number (if applicable):
Name of Submitter: Department of Public Works	Common Council Meeting Date: October 21, 2025
Agenda Item Title: Review and possible action on removing the parking restrictions at 337 Palmer St.	

Issue Before the Board/Council: This item was brought forward by Ald. E Payne to remove the parking restrictions at 337 Palmer St.
Options & Alternatives: 1. Approve the removal of 2-hour parking signs 2. Make no changes
Additional Details: Public Works reviewed the parking restrictions on Palmer St, Morey Ln and Morey St. The locations of the 2-hour parking signs are noted in the exhibit.



City of Waukesha
201 Delafield Street
Waukesha, WI 53188
Tel: 262.542.3700
waukesha-wi.gov

What is the Strategic Plan Priority this item relates to:

N/A

What impact will this item have on the Strategic Plan Priority?

N/A

Financial Remarks:

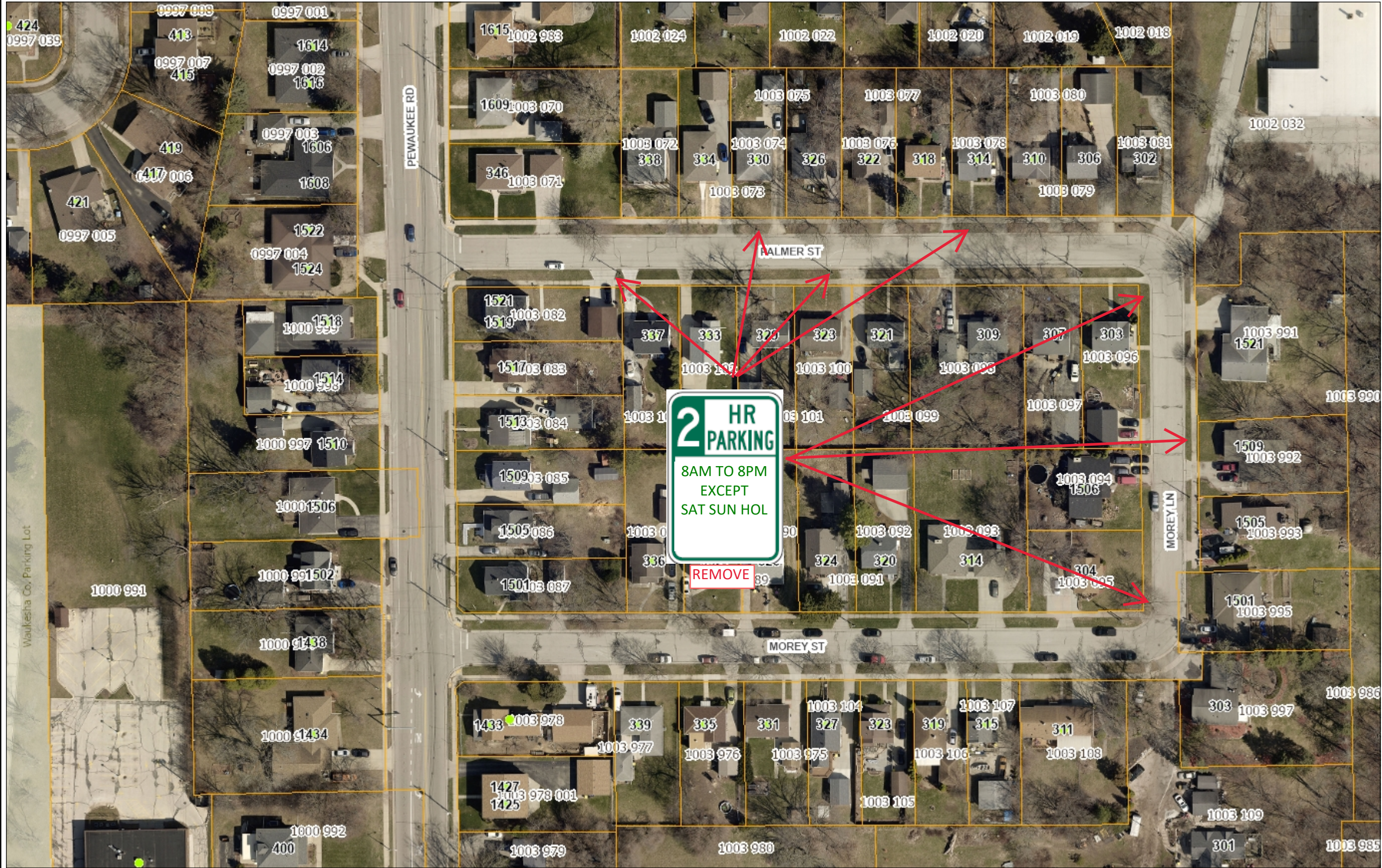
There is no cost associated with the removal of the signs. If the option to make no change is selected Public Works recommends replacing all the signs as they are very faded. The cost to replace the signs is approximately \$50/sign.

Suggested Motion:

I move to approve the removal of the 2-hour parking restrictions on Palmer St and Morey Ln.

Reviewed By:

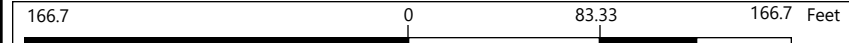
Finance Director	Date Reviewed
City Attorney Brian Running by: <i>Miles Eastman</i>	Date Reviewed 10/2/2025
City Administrator	Date Reviewed



Legend

- Address Labels**
 - Active (Green dot)
 - Pending (Yellow dot)
 - Utility (Black square)
 - Vacant (Red circle)
 - Removed (Red dot)
- Taxkey Labels**
 - Parcels (Yellow outline)
- City Limits** (Red outline)
- Railroads** (Black line)
- Water Bodies** (Blue area)
- Landmarks**
 - Cemetery (Green area)
 - County (Light green area)
 - Municipal (Light blue area)
 - Hospital (Pink area)
 - Parks (Light green area)
 - School (Yellow area)
 - State/Federal (Light grey area)

1:1,000



This map is a user generated static output from an Internet mapping site and is for reference only. The data found on this site is considered to be correct, but should not be used for engineering or survey applications without verifying the information from officially recorded sources.

Notes: