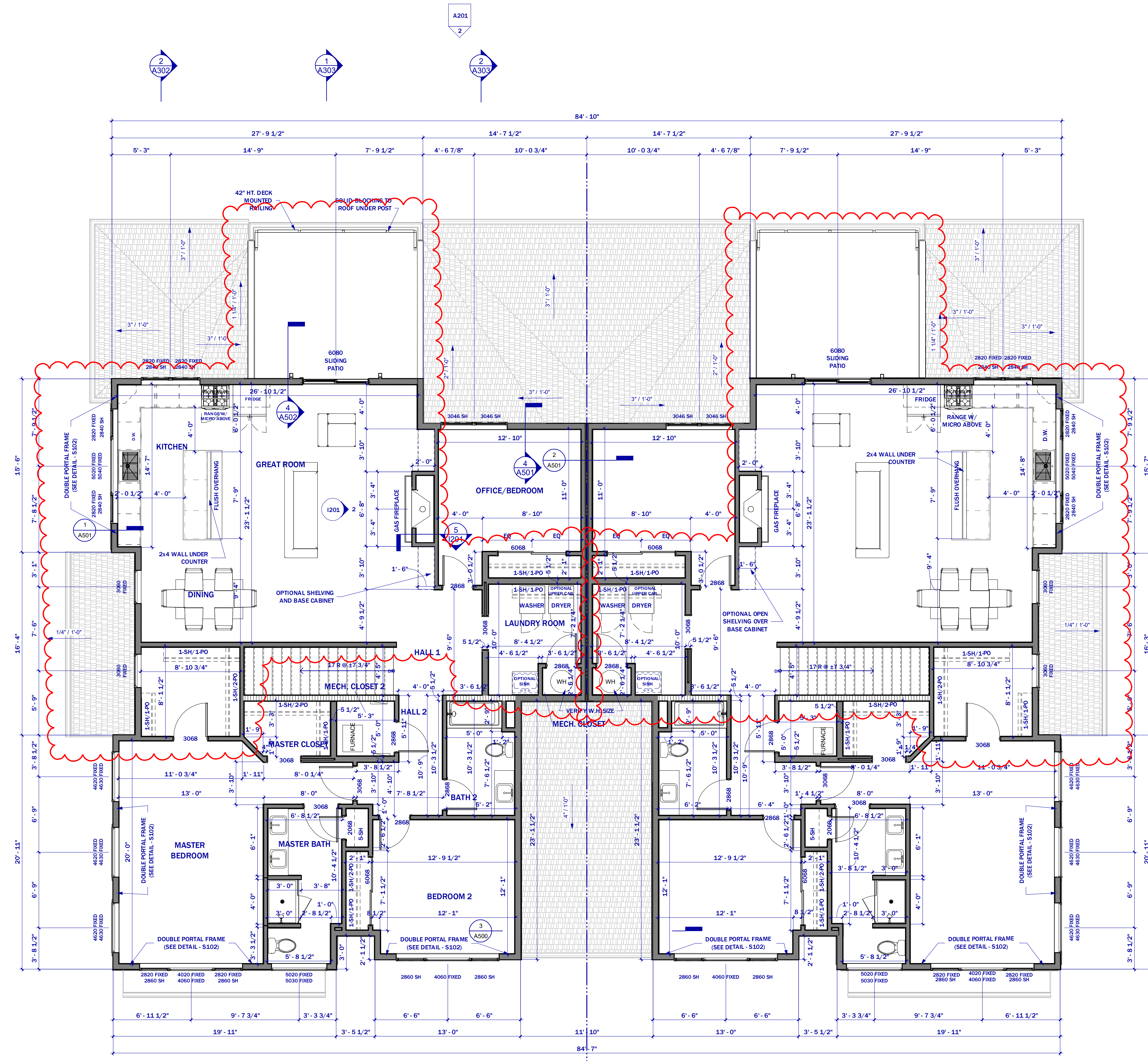


**1 FIRST FLOOR PLAN**  
SCALE: 1/4" = 1'-0"

- FLOOR SYSTEM INFORMATION**
- FIRST FLOOR: 11" ENGINEERED JOIST @ 16" O.C.
  - (SUPPLIER TO VERIFY SERIES AND SPACING)
  - 0.375" MAX LIVE LOAD DEFLECTION
- EDGE INFORMATION**
- WALLS: 16" CMU
  - ROOF: 16" CMU TO ROOF PLAN FOR ROOF INFORMATION
- WALL INFORMATION**
- SEE DETAILS
- WINDOW INFORMATION**
- ALL WINDOW TYPE AND SIZE SHOWN GENERIC. REFER TO CATALOG FOR DETAILS.
  - STANDARD TOP OF WINDOW IS 7"12" FROM FLOOR UNLESS NOTED (SEE ELEVATIONS)
- STAIR INFORMATION**
- BASEMENT TO FIRST FLOOR:
  - 18 RISERS @ 7 3/4" MAX X 13 TREADS @ 12" WITH 1" NOSING
  - FIRST FLOOR TO SECOND FLOOR:
  - 18 RISERS @ 7 3/4" MAX X 13 TREADS @ 12" WITH 1" NOSING
- PLAN INFORMATION**
- REFER TO TYPICAL WALL SECTIONS FOR ADDITIONAL FOUNDATION INFORMATION.
  - ALL DIMENSIONS ARE TO FACE OF STUD TO FACE OF FLOOR FINISH TO FACE OF CONCRETE.
  - THE CONDITIONS LISTED HERE ARE STANDARDS FOR THE PLAN. EXCEPTIONS ARE NOTED ON THE PLAN.



**1 SECOND FLOOR PLAN**  
SCALE: 1/4" = 1'-0"

- FLOOR SYSTEM INFORMATION**
  - SECOND FLOOR: ENGINEERED FLOOR TRUSSES 24" O.C. (SUPPLIER TO VERIFY SERIES AND SPACING)
  - 0.3" MAX. LIVE LOAD DEFLECTION
- ROOF INFORMATION**
  - REFER TO ROOF PLAN FOR ROOF INFORMATION
- WALL INFORMATION**
  - SEE ENGINEERING
- WINDOW INFORMATION**
  - ALL WINDOW TYPE AND SIZE SHOWN GENERIC. REFER TO CATALOG FOR DETAILS
  - STANDARD TOP OF WINDOW IS 7'-0" FROM FLOOR UNLESS NOTED (SEE ELEVATIONS)
- STAIR INFORMATION**
  - REFER TO ROOF PLAN FOR ROOF INFORMATION
  - FIRST FLOOR TO SECOND FLOOR
  - 18 RISERS @ 7 1/4" MAX 17 TREADS @ 12" WITH 1" NOSING
- PLAN INFORMATION**
  - REFER TO TYPICAL WALL SECTIONS FOR ADDITIONAL FOUNDATION INFORMATION
  - ALL DIMENSIONS ARE TO FACE OF STUD TO FACE OF STUD OR FACE TO FACE OF CONCRETE
  - THE CONDITIONS LISTED HERE ARE STANDARDS FOR THE PLAN. EXCEPTIONS ARE NOTED ON THE PLAN

**SECOND FLOOR PLAN**

SCALE: 1/4" = 1'-0"

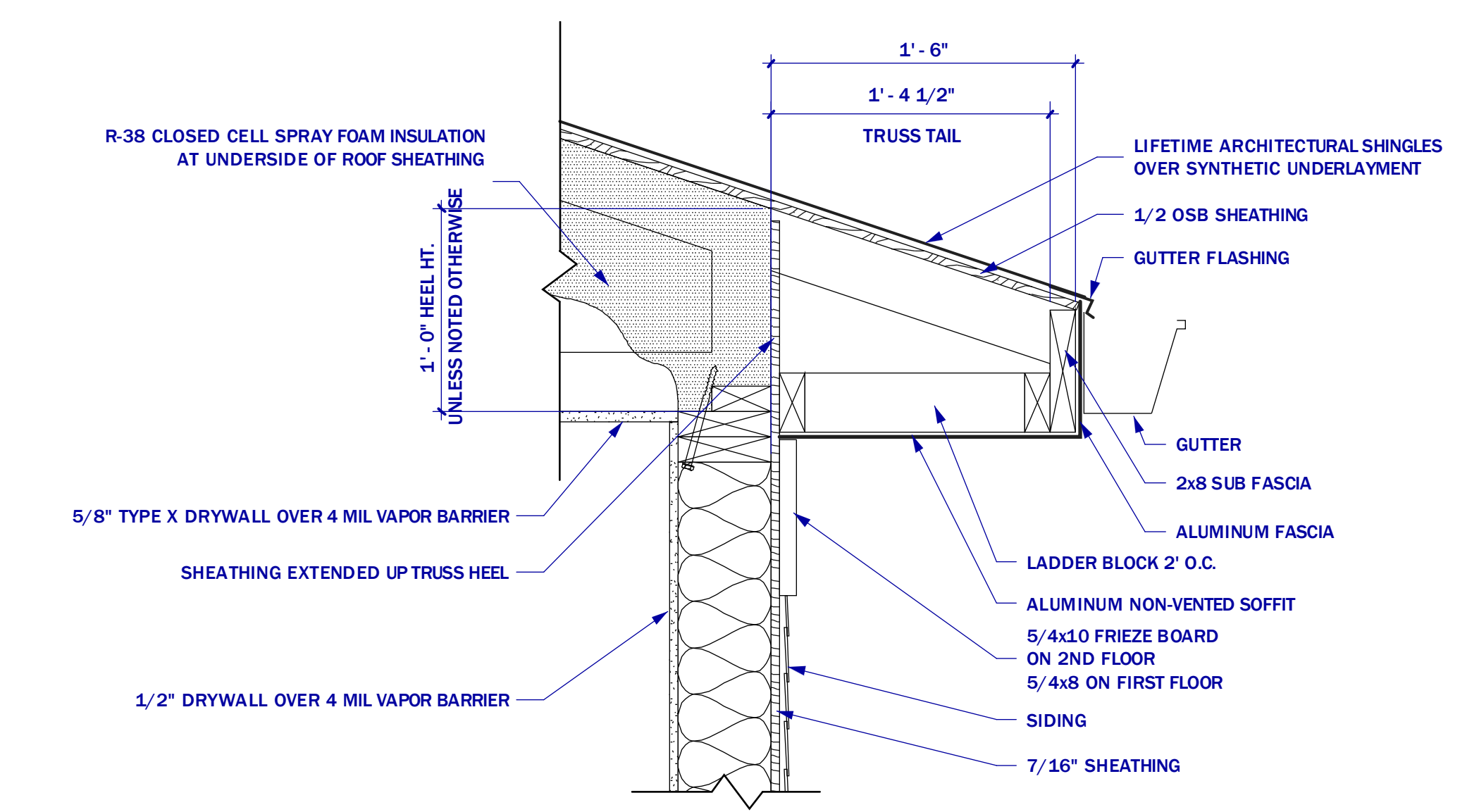
**NOTES:**  
ALTHOUGH EVERY EFFORT HAS  
BEEN MADE IN PREPARING THESE  
CONTRACT DOCUMENTS AND  
CHECKING THEM FOR ACCURACY,  
THE CONTRACTORS MUST CHECK  
ALL DETAILS AND DIMENSIONS AND  
BE RESPONSIBLE FOR SAME. THE  
CONTRACTORS SHALL BE  
RESPONSIBLE FOR MAKING SURE  
THAT ALL WORK BEING DONE  
ACCORDANCE WITH ALL STATE AND  
LOCAL CODES. THE CONTRACT  
DOCUMENTS LIST SPECIFICS  
CALLED FREE DESIGN OR DESIGN  
BUILDS FOR ROOF WINDOW,  
PLUMBING, ELECTRICAL, HVAC,  
DETAILS, AND AS INDICATED IN  
THE SPECIFICATION AS TO BE  
COMPLETED ON A DESIGNATED  
BASE. THIS MEANS THAT THE  
CONTRACT DOCUMENTS DO NOT  
INCLUDE ALL REQUIRED DETAILS  
AND THAT THE CONTRACTORS  
SHALL USING THEIR OWN JUDGMENT  
OR QUALIFIED SUBCONTRACTORS  
DESIGN AND BUILD THE FREE  
DESIGN AND DESIGNATED  
PORTIONS OF THE WORK. THE  
CLIENT IS DIRECTLY CONTRACTING  
WITH THE CONTRACTOR AND  
THEREFORE THE CLIENT AND THE  
CONTRACTORS ARE ASSUMING THE  
DESIGN AND BUILD RESPONSIBILITY  
FOR THE FREE DESIGN AND  
DESIGNATED PORTIONS OF THE  
PROJECT. LEX DESIGN GROUP, LLC IS  
NOT RESPONSIBLE FOR VERIFYING  
ANY ASPECT OF THE CONTRACTORS  
WORK, OR FOR OBSERVATION OF  
THE CONTRACTORS WORK FOR  
COMPLIANCE WITH THE CONTRACT  
DOCUMENTS.

**FOR APPROVAL**

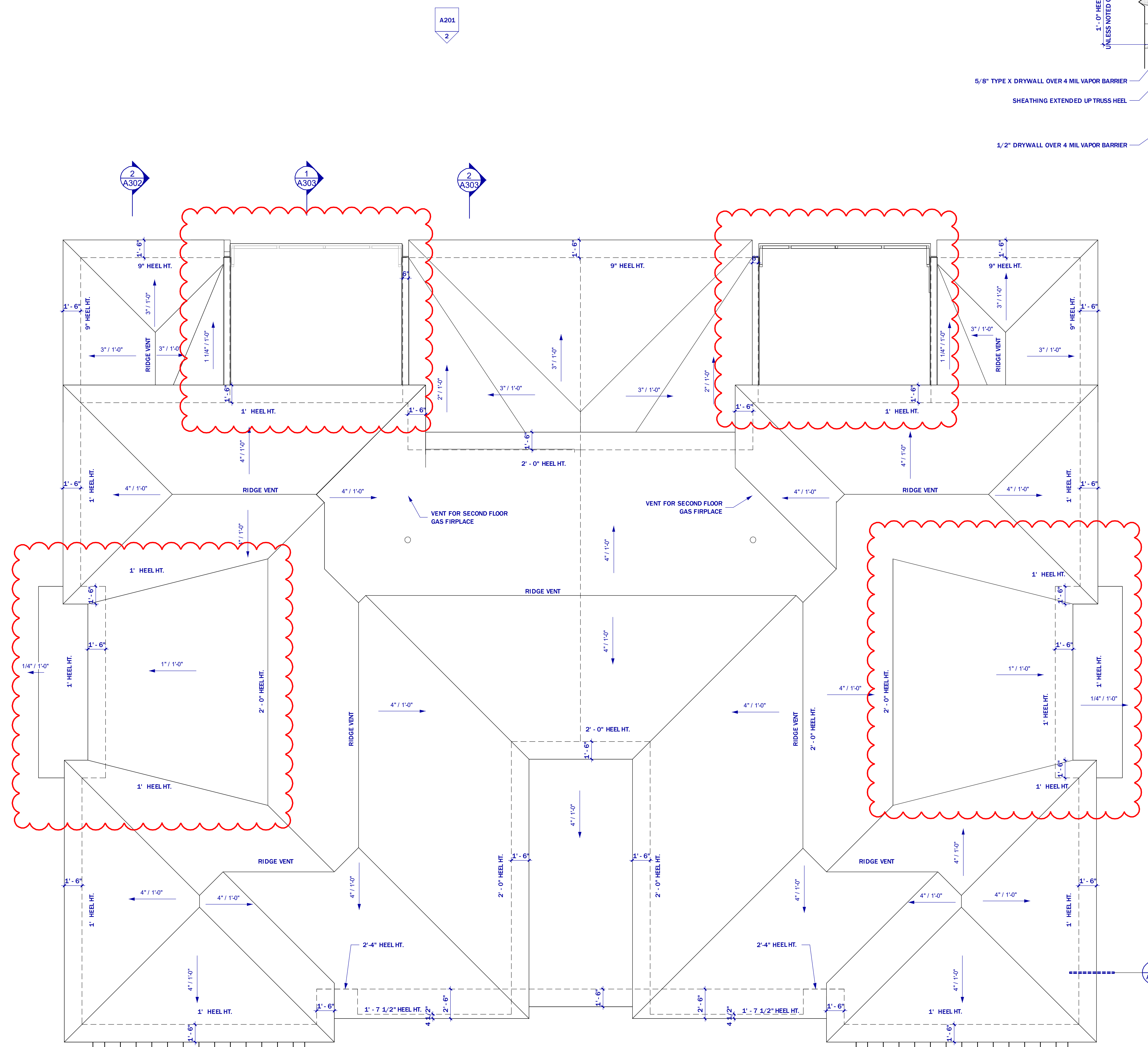
**1**  
**ROOF PLAN**  
SCALE: 1/4" = 1'-0"

**NOTES:**  
TRUSSES SHOWN WITH  
1. 12" HEEL ON 2ND FLOOR (UNLESS NOTED OTHERWISE)  
2. 12" HEEL ON FIRST FLOOR (UNLESS NOTED OTHERWISE)  
3. FINAL HEEL HEIGHT VERIFIED BY MANUFACTURE  
DIMENSIONS ARE TO BRUSH FRAMING  
TRUSS TAILS ARE 1'-4 1/2" (1" SOFFIT) (UNLESS NOTED OTHERWISE)  
4. SEE DETAIL

**ROOF  
PLAN**



**2**  
**EAVE DETAIL**  
SCALE: 1 1/2" = 1'-0"



**1**  
**ROOF PLAN**  
SCALE: 1/4" = 1'-0"

A201  
2

2  
A302

1  
A303

A202  
1  
A302

2  
A301

1  
A301

1  
A201

2  
A107

**NOTES:**

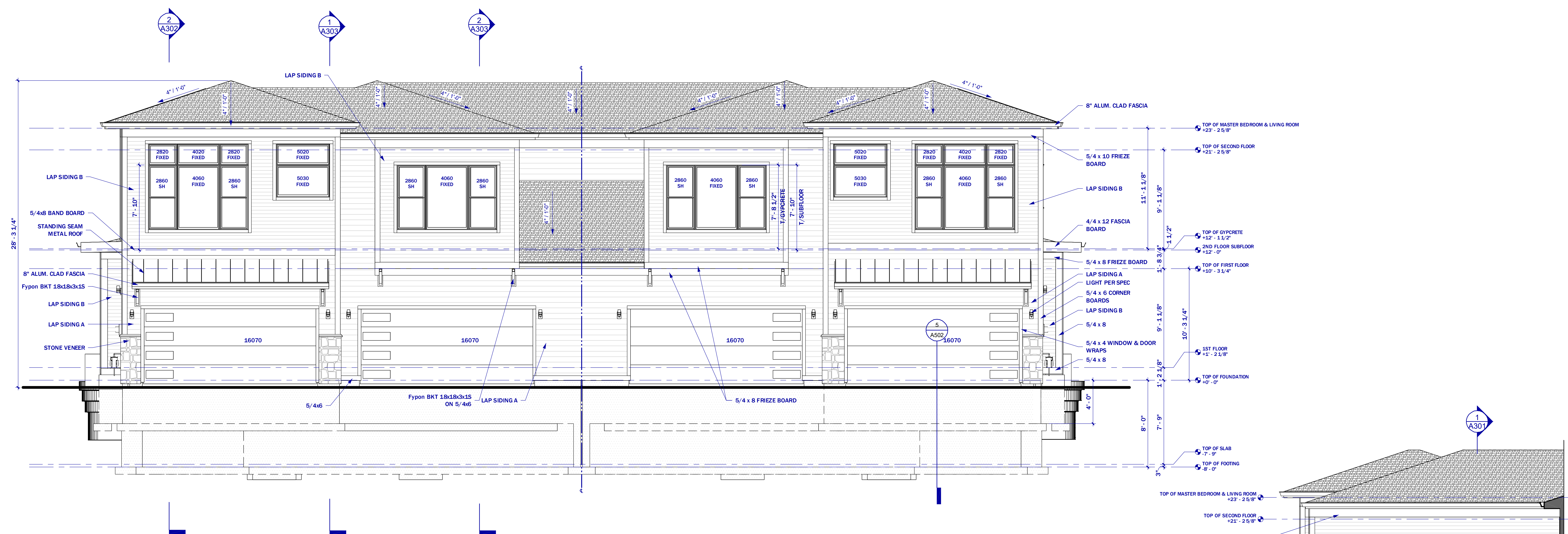
ALTHOUGH EVERY EFFORT HAS  
 BEEN MADE IN PREPARING THESE  
 CONTRACT DOCUMENTS AND  
 CHECKING THEM FOR ACCURACY,  
 THE CONTRACTORS MUST CHECK  
 ALL DETAILS AND DIMENSIONS AND  
 BE RESPONSIBLE FOR SAME. THE  
 CONTRACTORS SHALL BE  
 RESPONSIBLE FOR MAKING SURE  
 THAT ALL WORK IS DONE IN  
 ACCORDANCE WITH ALL STATE AND  
 LOCAL CODES. THE CONTRACT  
 DOCUMENTS LIST SPECIES  
 CALLED FREE DESIGN OR DESIGN  
 BUILD FOR GOOD. WINDOW  
 PLUMBING, ELECTRICAL, HVAC  
 DETAILS, AND AS DESIGNATED IN  
 THE SPECIFICATION AS TO BE  
 COMPLETED BY A DESIGNATED  
 BASIS. \*THIS MEANS THAT THE  
 CONTRACT DOCUMENTS DO NOT  
 INCLUDE ALL REQUIRED DETAILS  
 AND THAT THE CONTRACTORS  
 SHALL OBTAIN THE NECESSARY  
 QUALIFIED SUBCONTRACTORS  
 DESIGN AND BUILD THE FREE  
 DESIGN AND DESIGNATED  
 PORTIONS OF THE WORK. THE  
 CLIENT IS DIRECTLY CONTRACTING  
 WITH THE CONTRACTORS AND  
 THEREFORE THE CLIENT AND THE  
 CONTRACTORS ARE ASSUMING THE  
 DESIGN AND BUILD RESPONSIBILITY  
 FOR THE FREE DESIGN AND  
 DESIGNATED PORTIONS OF THE  
 PROJECT. LEX DESIGN GROUP LLC IS  
 NOT RESPONSIBLE FOR CHECKING  
 ANY ASPECT OF THE CONTRACTORS  
 WORK, OR FOR OBSERVATION OF  
 THE CONTRACTORS WORK FOR  
 COMPLIANCE WITH THE CONTRACT  
 DOCUMENTS.

**FOR APPROVAL**

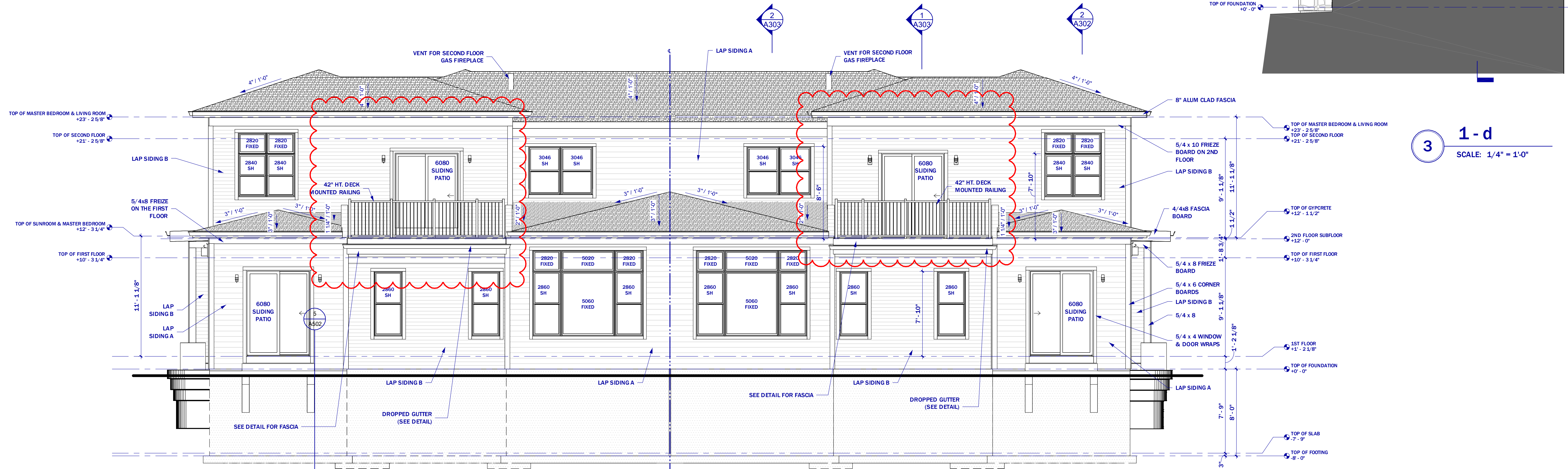
**EXTERIOR  
 ELEVATIONS**

SCALE: 1/4" = 1'-0"

**A201**

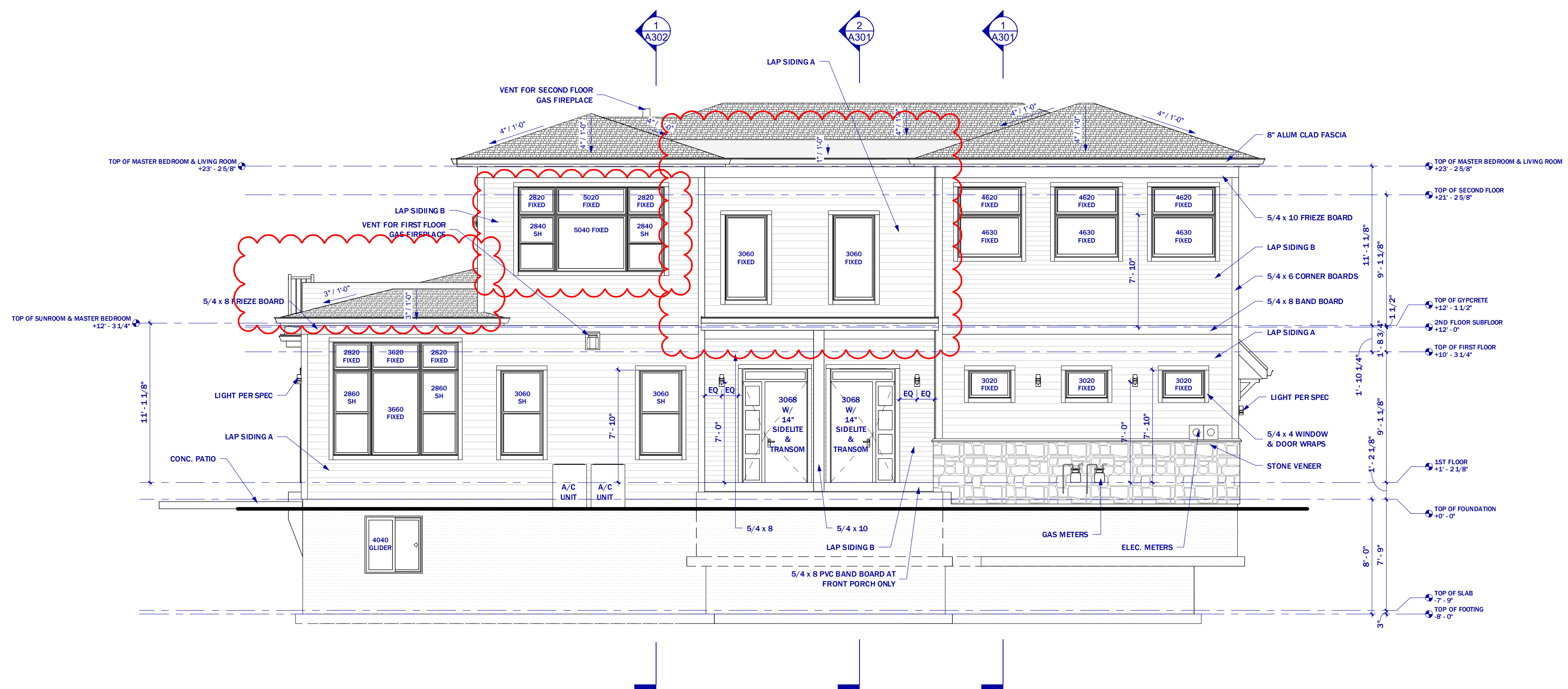


**1 FRONT ELEVATION**  
 SCALE: 1/4" = 1'-0"

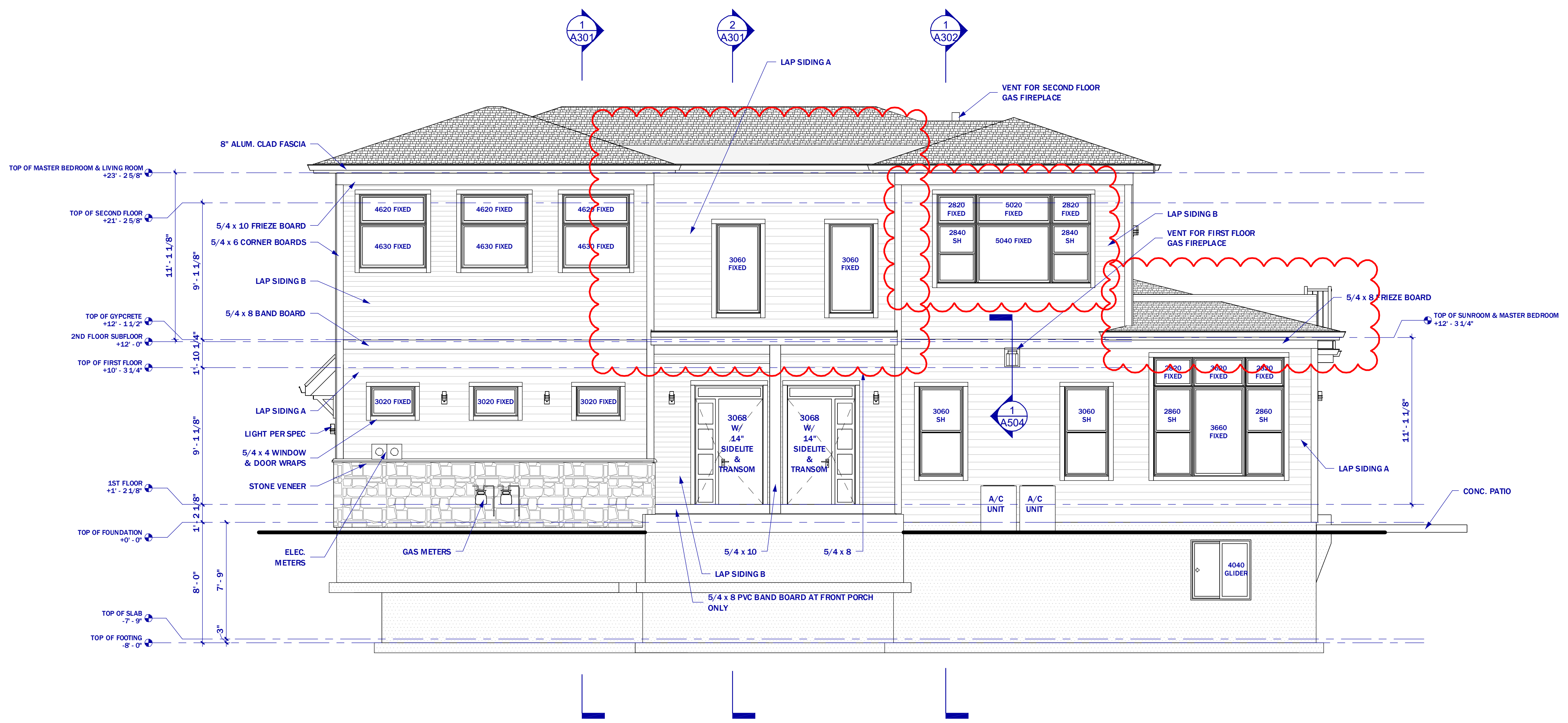


**2 REAR ELEVATION**  
 SCALE: 1/4" = 1'-0"

**3 1-d**  
 SCALE: 1/4" = 1'-0"



**1 LEFT ELEVATION**  
SCALE: 1/4" = 1'-0"



**2 RIGHT ELEVATION**  
SCALE: 1/4" = 1'-0"

**FOR APPROVAL**

**EXTERIOR ELEVATIONS**

SCALE: 1/4" = 1'-0"

**A202**

**PROJECT:**  
**ASPEN  
 OVERLOOK  
 - BUILDING  
 3**

XXXX Tenny Ave  
 WAUKESHA,  
 WISCONSIN

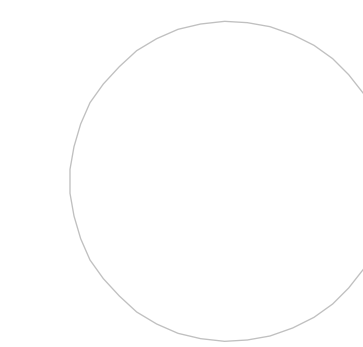
**PROJECT NO**

REVISION	DATE
New layout	3.20.2026

**NOTES:**  
 ALTHOUGH EVERY EFFORT HAS  
 BEEN MADE IN PREPARING THESE  
 CONTRACT DOCUMENTS AND  
 CHECKING THEM FOR ACCURACY,  
 THE CONTRACTORS MUST CHECK  
 ALL DETAILS AND DIMENSIONS AND  
 BE RESPONSIBLE FOR SAME. THE  
 CONTRACTORS SHALL BE  
 RESPONSIBLE FOR MAKING SURE  
 THAT ALL WORK IS DONE IN  
 ACCORDANCE WITH ALL STATE AND  
 LOCAL CODES. THE CONTRACT  
 DOCUMENTS LIST SERVICES  
 CALLED "FEE DESIGN OR DESIGN  
 BUILDS FOR ROOF, WINDOW,  
 PLUMBING, ELECTRICAL, HVAC,  
 DETAILS, AND AS DESIGNATED IN  
 THE SPECIFICATION AS TO BE  
 COMPLETED ON A DESIGN-BUILD  
 BASIS. \*THIS MEANS THAT THE  
 CONTRACT DOCUMENTS DO NOT  
 INCLUDE ALL REQUIRED DETAILS  
 AND THAT THE CONTRACTORS  
 SHALL USING THEIR OWN OR  
 QUALIFIED SUBCONTRACTORS  
 DESIGN AND BUILD THE FEE-  
 DESIGN AND DESIGN-BUILD  
 PORTIONS OF THE WORK. THE  
 CLIENT IS DIRECTLY CONTRACTING  
 WITH THE CONTRACTOR(S).  
 THEREFORE, THE CLIENT AND THE  
 CONTRACTORS ARE ASSUMING THE  
 DESIGN AND BUILD RESPONSIBILITY  
 FOR THE FEE DESIGN AND  
 DESIGN-BUILD PORTIONS OF THE  
 PROJECT. LEX DESIGN GROUP, LLC IS  
 NOT RESPONSIBLE FOR CHECKING  
 ANY ASPECT OF THE CONTRACTORS  
 WORK, OR FOR OBSERVATION OF  
 THE CONTRACTORS WORK FOR  
 COMPLIANCE WITH THE CONTRACT  
 DOCUMENTS.



FOR APPROVAL



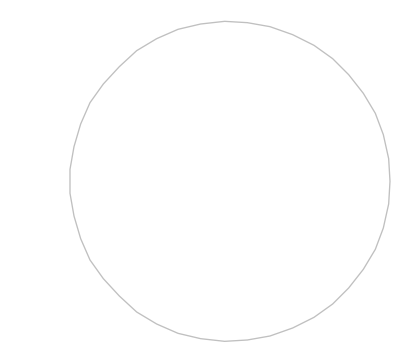
**EXTERIOR  
 3D VIEWS**

SCALE:

**A901**

**NOTES:**  
ALTHOUGH EVERY EFFORT HAS  
BEEN MADE IN PREPARING THESE  
CONTRACT DOCUMENTS AND  
CHECKING THEM FOR ACCURACY,  
THE CONTRACTORS MUST CHECK  
ALL DETAILS AND DIMENSIONS AND  
BE RESPONSIBLE FOR SAME. THE  
CONTRACTORS SHALL BE  
RESPONSIBLE FOR MAKING SURE  
THAT ALL WORK IS DONE IN  
ACCORDANCE WITH ALL STATE AND  
LOCAL CODES. THE CONTRACT  
DOCUMENTS LIST SPECIFICS  
CALLED FREE DESIGN OR DESIGN  
BUILT FOR ROOF WINDOW,  
PLUMBING, ELECTRICAL, HVAC,  
DETAILS, AND AS DESIGNATED IN  
THE SPECIFICATION AS TO BE  
COMPLETED ON A DESIGNATED  
BASIS. \*THIS MEANS THAT THE  
CONTRACT DOCUMENTS DO NOT  
INCLUDE ALL REQUIRED DETAILS  
AND THAT THE CONTRACTORS  
SHALL, USING THEIR OWN JUDGMENT OR  
QUALIFIED SUBCONTRACTORS,  
DESIGN AND BUILD THE FREE  
DESIGN AND DESIGNATED  
PORTIONS OF THE WORK. THE  
CLIENT IS DIRECTLY CONTRACTING  
WITH THE CONTRACTOR AND  
THEREFORE THE CLIENT AND THE  
CONTRACTORS ARE ASSUMING THE  
DESIGN AND BUILD RESPONSIBILITY  
FOR THE FREE DESIGN AND  
DESIGNATED PORTIONS OF THE  
PROJECT. LEX DESIGN GROUP, LLC IS  
NOT RESPONSIBLE FOR VERIFYING  
ANY ASPECT OF THE CONTRACTORS  
WORK, OR FOR OBSERVATION OF  
THE CONTRACTORS WORK FOR  
COMPLIANCE WITH THE CONTRACT  
DOCUMENTS.

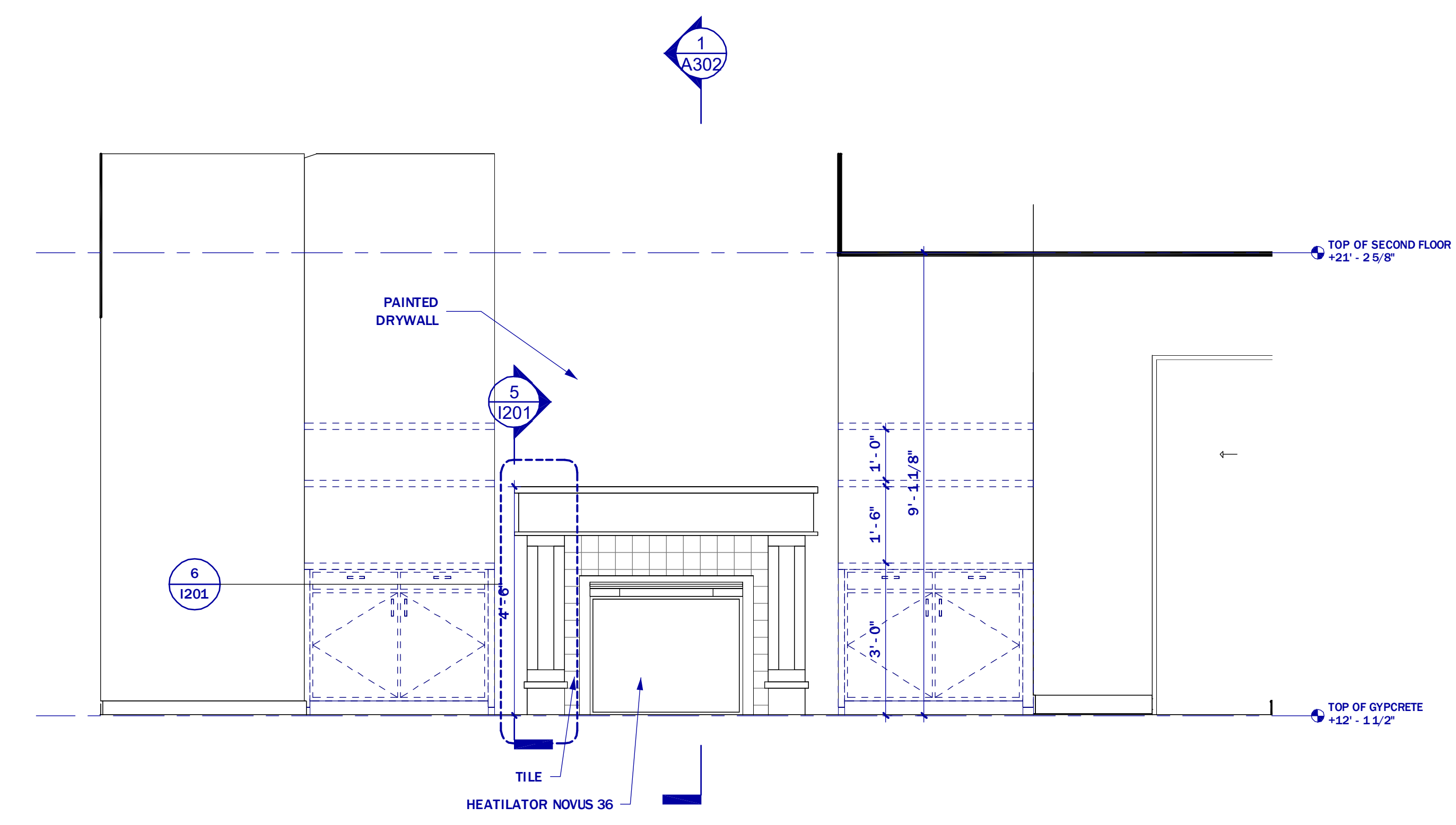
**FOR APPROVAL**



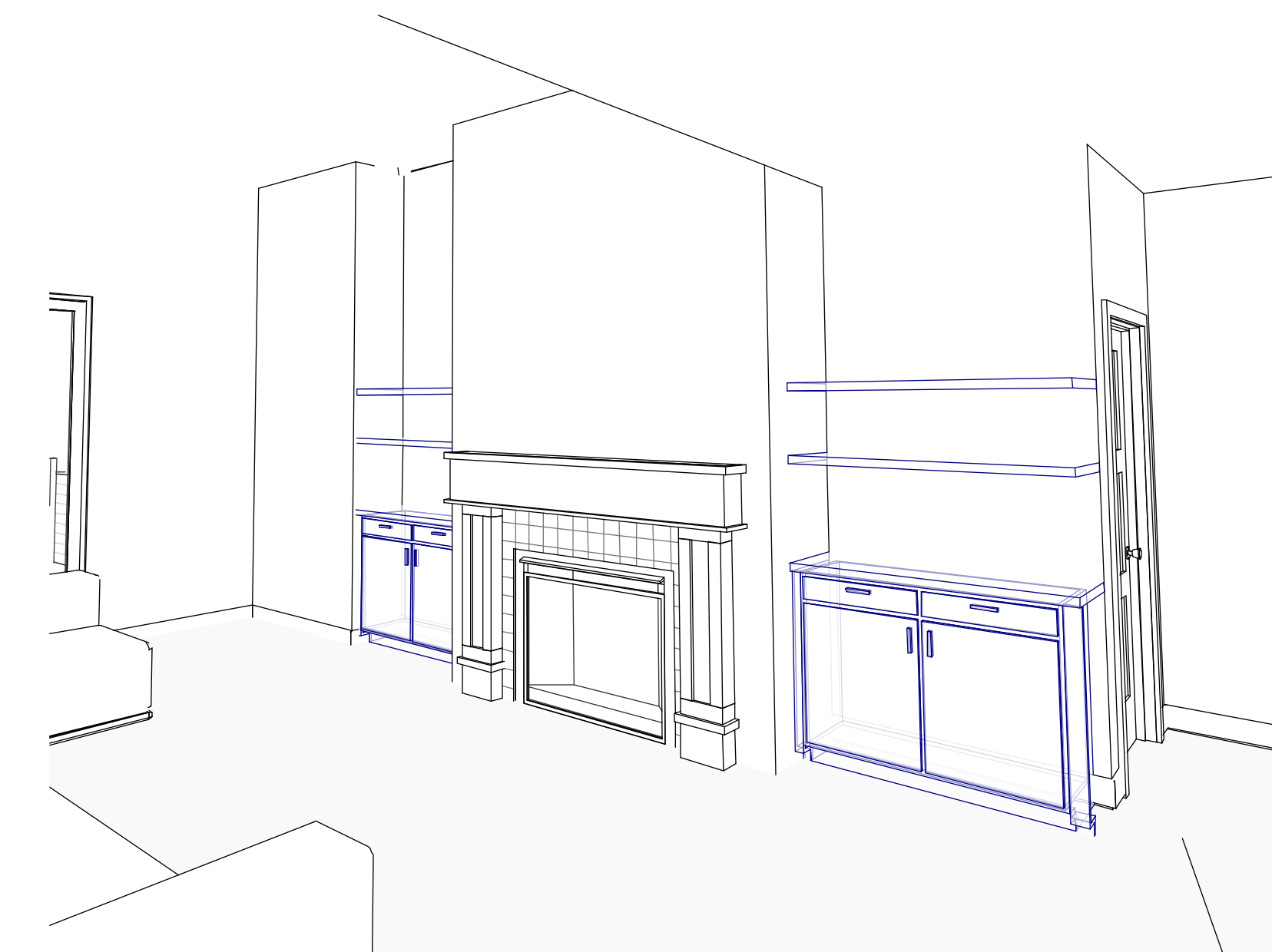
**INTERIOR  
ELEVATIONS**

SCALE: As indicated

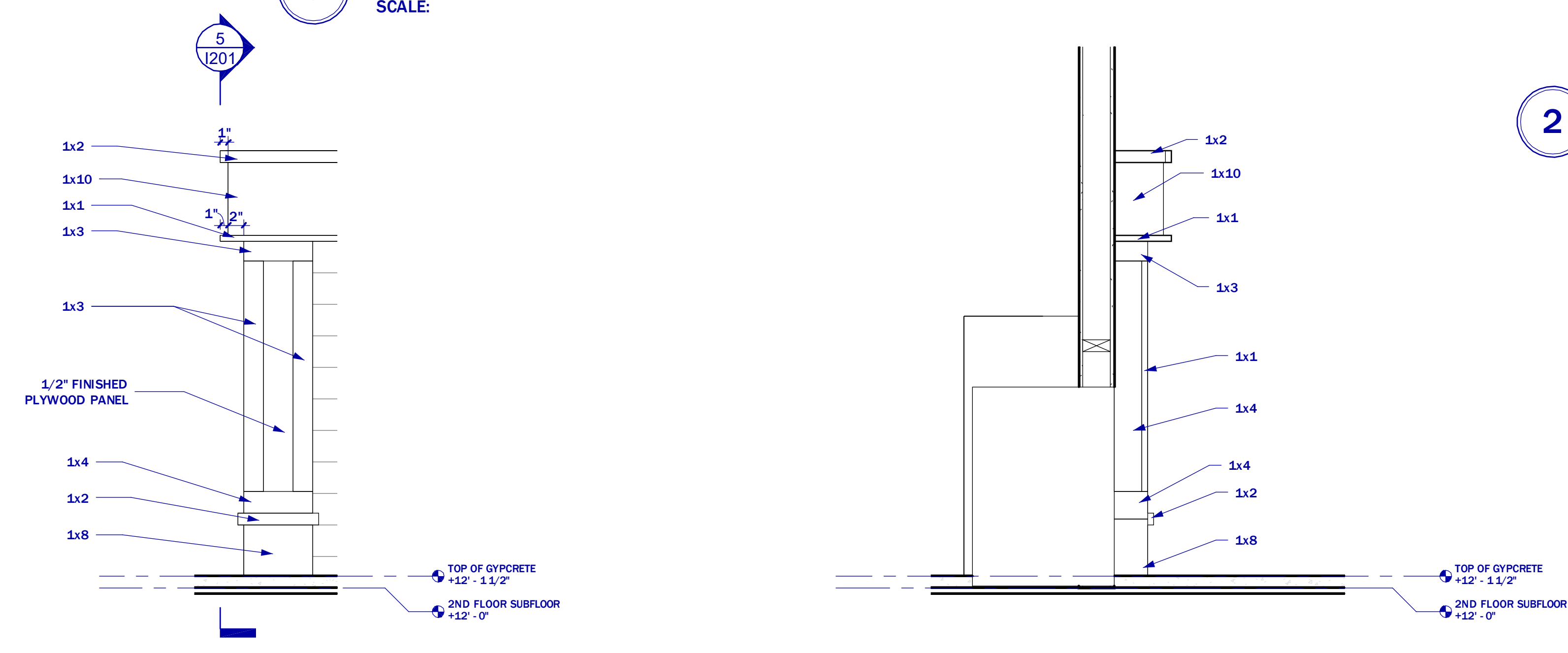
**I201**



**2 UNIT 2 FIREPLACE ELEVATION**  
SCALE: 1/2" = 1'-0"

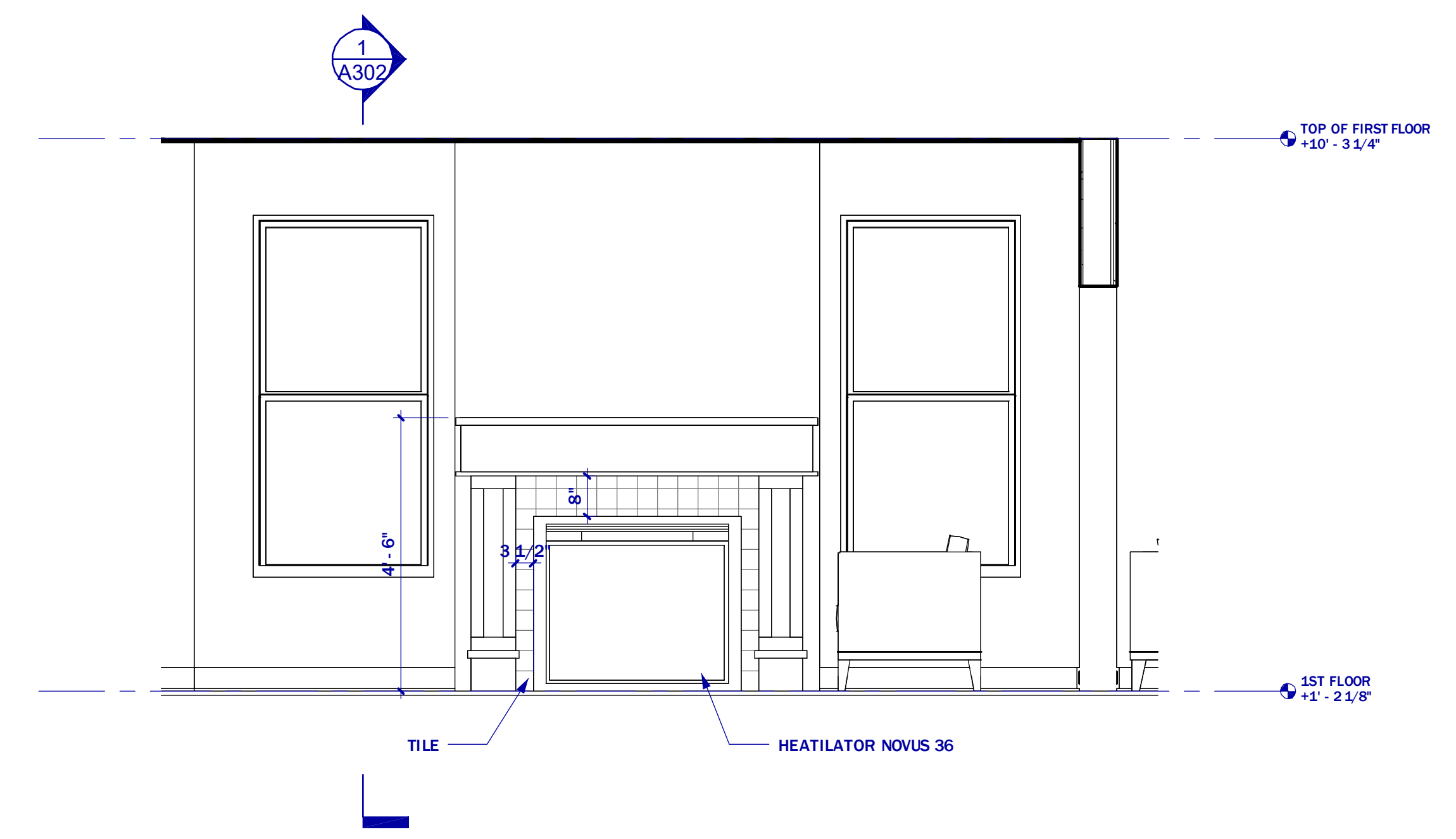


**3 FIREPLACE 3D VIEW - UNIT 2**  
SCALE:



**5 MANTEL SECTION 1**  
SCALE: 1" = 1'-0"

**6 MANTEL ELEV. 1**  
SCALE: 1" = 1'-0"



**1 UNIT 1 FIREPLACE ELEVATION**  
SCALE: 1/2" = 1'-0"



**7 FIREPLACE 3D VIEW 1 - UNIT 1**  
SCALE:



**8 FIREPLACE 3D VIEW 2 - UNIT 1**  
SCALE: