

Q.PEAK DUO XL-G11S SERIES



585-600Wp | 156 Cells
21.5% Maximum Module Efficiency

MODEL Q.PEAK DUO XL-G11S.3/BFG



Bifacial energy yield gain of up to 21%
Bifacial QANTUM solar cells make efficient use of light striking on the module rear-side for radically improved LCOE.

Low electricity generation costs
QANTUM DUO technology with optimized module layout to boost module power and improve LCOE.

A reliable investment
Double glass module design enables extended lifetime with 12-year product warranty and improved 30-year performance warranty.

Enduring high performance
Long-term yield security with Anti-LID and Anti-PID Technology*, Hot-Spot Protect.

Frame for versatile mounting options
High-tech aluminum alloy frame protects from damage, enables use of a wide range of mounting structures and is certified regarding IEC for high snow (5400 Pa) and wind loads (2400 mph).

Innovative all-weather technology
Optimal yields, whatever the weather with excellent lowlight and temperature behavior.

* See data sheet on rear for further information.
* APT test conditions according to IEC 7243-2 (2019) method B (1500 h/18h) including post-treatment according to IEC 62803-1 (cl. 2.2.2.2)

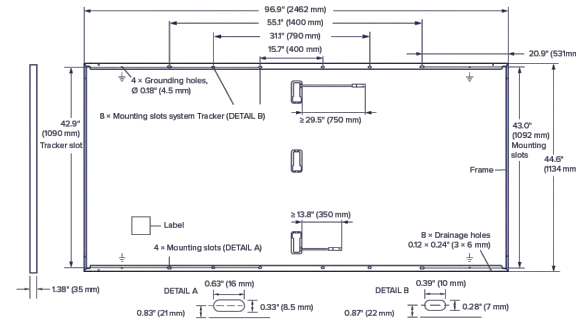
Qualifications and Certificates



Q.PEAK DUO XL-G11S SERIES

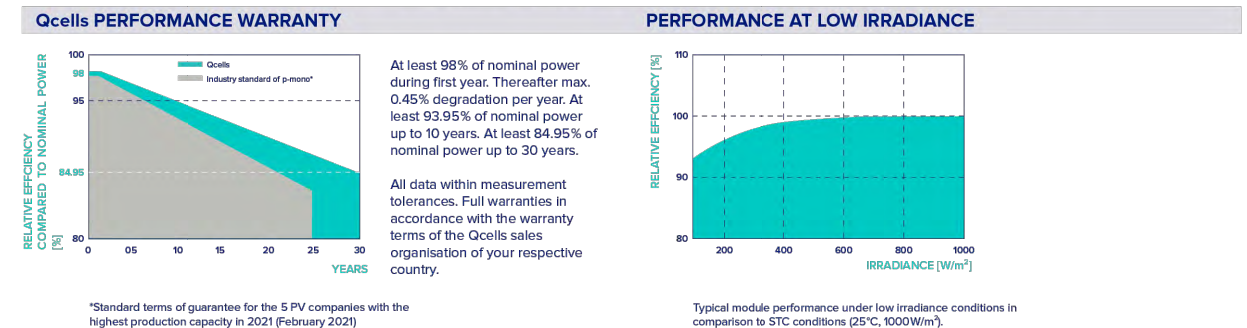
Mechanical Specification

Format	96.9" x 44.6" x 1.38" (including frame) (2462 mm x 1134 mm x 35 mm)
Weight	70.9 lbs (32.1 kg)
Front Cover	0.08" (2.0 mm) thermally pre-stressed glass with anti-reflection technology
Back Cover	0.08" (2.0 mm) semi-tempered glass
Frame	Anodized aluminum
Cell	6 x 26 monocrystalline QANTUM solar half cells
Junction box	2.09 x 3.08 x 1.26 x 2.36" x 0.59 x 0.71" (53.0 mm x 32.60 mm x 15.18 mm) Protection class IP67 with bypass diodes
Cable	4 mm ² Solar cable (T) x 2.95" (75.0 mm) (T) x 13.8" (350 mm)
Connector	Siemens MCA Evo2



Electrical Characteristics

POWER CLASS	585	590	595	600
MINIMUM PERFORMANCE AT STANDARD TEST CONDITIONS (STC) POWER TOLERANCE ±0.5W/0.1W				
Power at MPP	585	590	595	600
Short Circuit Current	13.72	13.74	13.77	13.80
Open Circuit Voltage	53.97	53.99	54.03	54.06
Current at MPP	13.07	13.12	13.16	13.20
Voltage at MPP	44.75	44.96	45.18	45.39
Efficiency	21.0	21.1	21.3	21.5



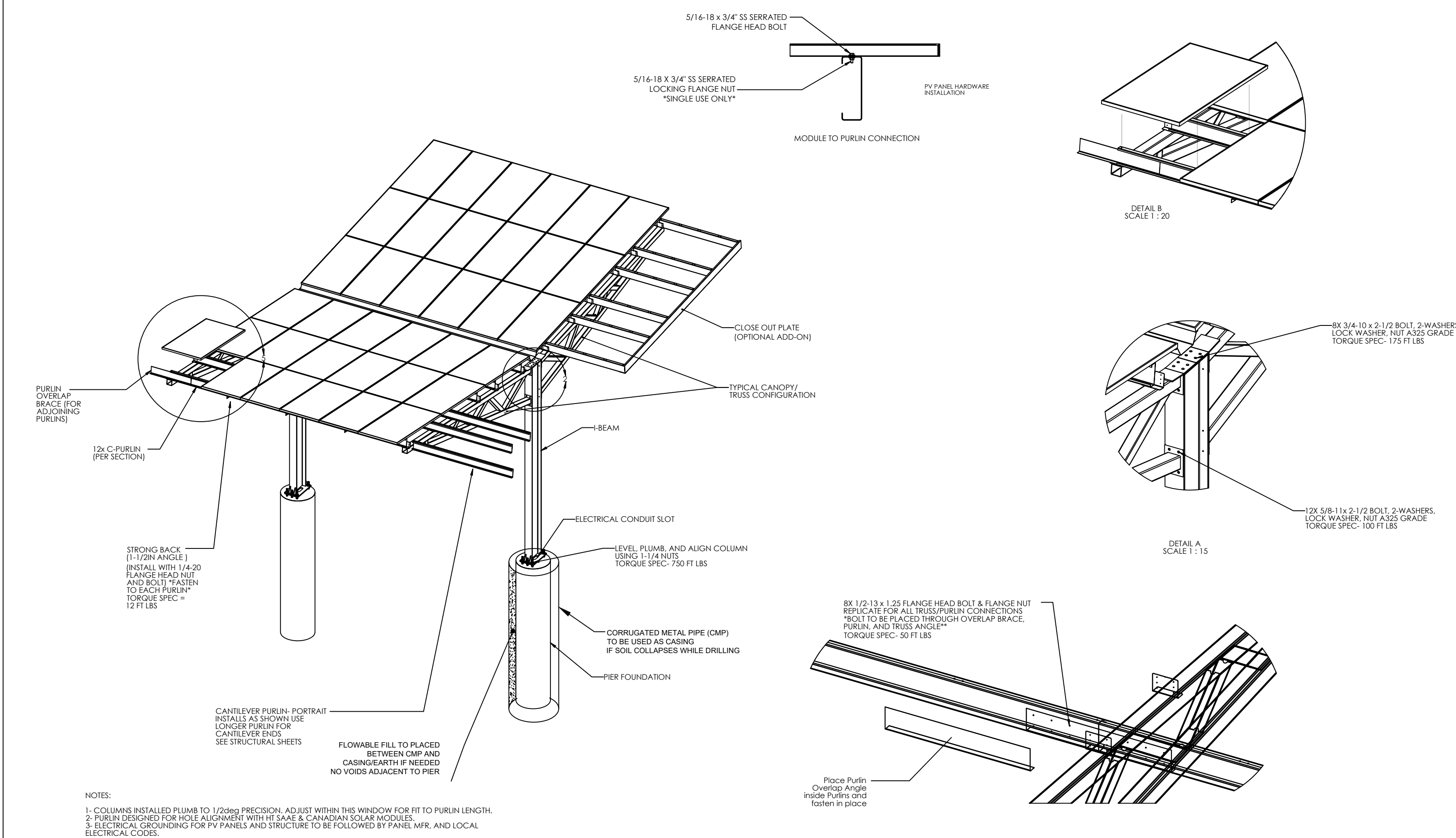
TEMPERATURE COEFFICIENTS	α [%/K]	β [%/K]
Temperature Coefficient of I_{sc}	-0.04	-0.27
Temperature Coefficient of V_{oc}	-0.34	109/15.4 (43/3 °C)

PROPERTIES FOR SYSTEM DESIGN	Value	Class
Maximum System Voltage	1500 V	Class II
Maximum Series Fuse Rating	25 A	TYPE 29*
Max. Design Load, Push/Pull†	75 (2600 Pa) / 113 (3600 Pa)	-40°F (-40°C) to 185°F (70°C)
Max. Test Load, Push/Pull†	113 (3600 Pa) / 150 (2400 Pa)	-40°C up to 185°C

Qualifications and Certificates
UL 6703-1A, UL 6703-2, CE compliant, Quality Certified by TÜV Rheinland, IEC 62703:2016, IEC 62703:2016, U.S. Patent No. 9,925,293 (solar cells)

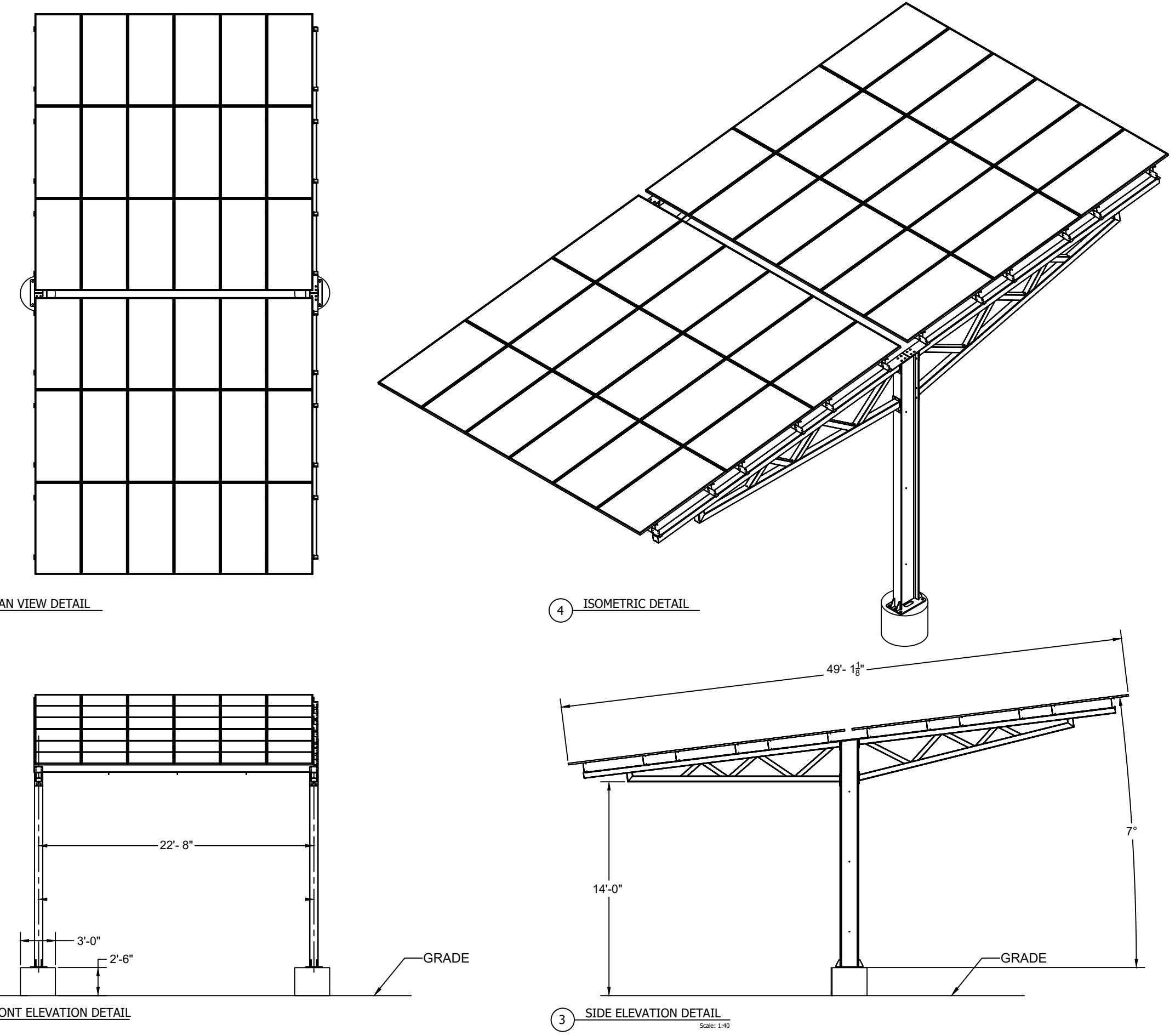
The ideal solution for:
Ground-mounted solar power plants

MODULE DIMENSIONS: 96.93" x 44.66" x 1.38"



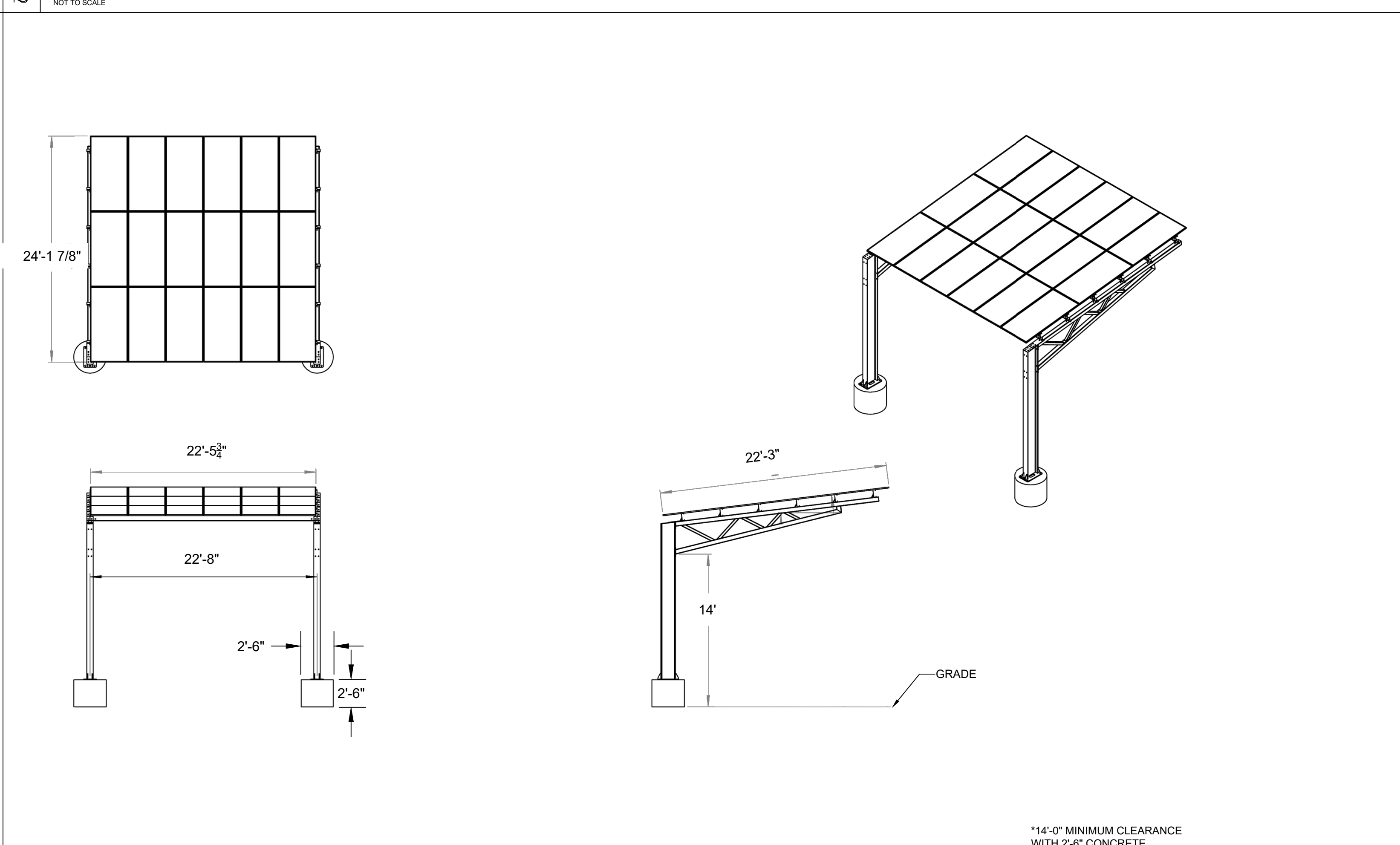
NOTES:
1. COLUMNS INSTALLED PLUMB TO 1/248th PRECISION. ADJUST WITHIN THE WINDOW FOR FIT TO PURLIN LENGTH.
2. PURLIN DESIGNED FOR HOLE ALIGNMENT WITH HT SAFE & CANADIAN SOLAR MODULES.
3. ELECTRICAL GROUNDING FOR PV PANELS AND STRUCTURE TO BE FOLLOWED BY PANEL MFR. AND LOCAL ELECTRICAL CODES.

1 PV MODULE DATA SHEET



1 PV MODULE DATA SHEET

2 CARPORT CANOPY ATTACHMENT DETAILS



4 L-CANOPY LOW SIDE COLUMN DETAILS

3 T-CANOPY CARPORT DETAILS

3 T-CANOPY CARPORT DETAILS

4 L-CANOPY LOW SIDE COLUMN DETAILS

4 L-CANOPY LOW SIDE COLUMN DETAILS

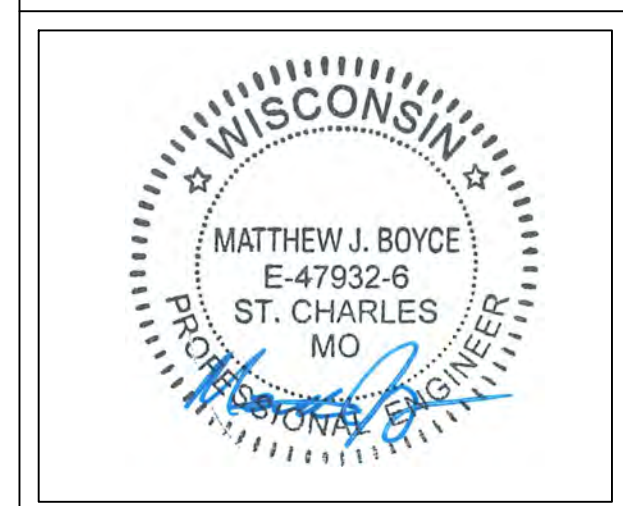
DRAWN BY: DENIS A. POLLACK (REH)
CHECKED BY: JAMES STRIZKI (REH)

DESCRIPTION	DATE	REV	BY:
ORIGINAL	02/27/2026	0	JMS

RENEWABLE ENERGY HOLDINGS
472 ROUTE 16 NORTH, RINGOES, WI 08901
PHONE: (908) 788-7750
FAX: (908) 837-0021

ARCH SOLAR
THE ENERGY EXPERTS

PERMIT PACKAGE FOR ARCH SOLAR SITUATED EAST TERRACE APARTMENTS 801 N EAST AVENUE WAUKESHA, WI 53186



Sheet Title:
DS-1 GENMOUNT'S DETAIL SHEET 6

These drawings are instruments of service and are the property of Renewable Energy Holdings. All designs and other information contained on these drawings are for use on the specified project and shall not be used on other projects, or for additions to this project, or for the completion of this project, by others without the expressed written permission and consent of Renewable Energy Holdings, nor are they to be assigned to any third party without said written permission and consent.

14'-0" MINIMUM CLEARANCE WITH 2'-6" CONCRETE PEDESTAL

