



City of Waukesha
 201 Delafield Street
 Waukesha, WI 53188
 Tel: 262.542.3700
 waukesha-wi.gov

City of Waukesha Cover Sheet

Committee: Building & Grounds	B&G Meeting Date: July 6, 2026
ID Number: ID#26-03970	Ordinance/Resolution Number (if applicable):
Department Submitting: Department of Public Works	Common Council Meeting Date: July 21, 2026
Agenda Item Title: Review and possible action on installing NO ENGINE BRAKING signs from the intersection of Interstate I-94 Southbound to the intersection of US Highway 18/State Highway 59, as well as the Northbound traffic between these two points along the Waukesha Bypass.	

Issue Before the Council:
 This item was brought forward by Ald. Van Trieste to install “Engine Brake Mufflers Required” signs for southbound STH 318 (Meadowbrook Road) just south of Silvernail Road and for northbound STH 318 (Meadowbrook Road) just north of USH 18 (Summit Avenue).

Options & Alternatives:

1. Approve the installation of the “Engine Brake Mufflers Required” for southbound STH 318 just south of Silvernail Road.
2. Do not approve the installation of the “Engine Brake Mufflers Required” for southbound STH 318 just south of Silvernail Road.

Additional Details:
 In correspondence with WisDOT, they will not allow for the installation of the northbound “Engine Brake Mufflers Required” sign because they only issue permits to install the sign at or near the corporate limits of a community. City of Waukesha already has the permitted sign installed for eastbound USH 18 (Summit Avenue) at the city limit, and the Town of Waukesha has the permitted sign installed for northbound STH 164 at Townline Road.

What is the Strategic Plan Priority this item relates to:
 N/A

What impact will this item have on the Strategic Plan Priority?
 N/A

Financial Remarks:
 The cost for installing one (1) “Engine Brake Mufflers Required” sign and one (1) 4”x6” wood post is approximately \$170. This would be charged to the 2026 Building and Grounds Special Projects Budget (3310-54141).

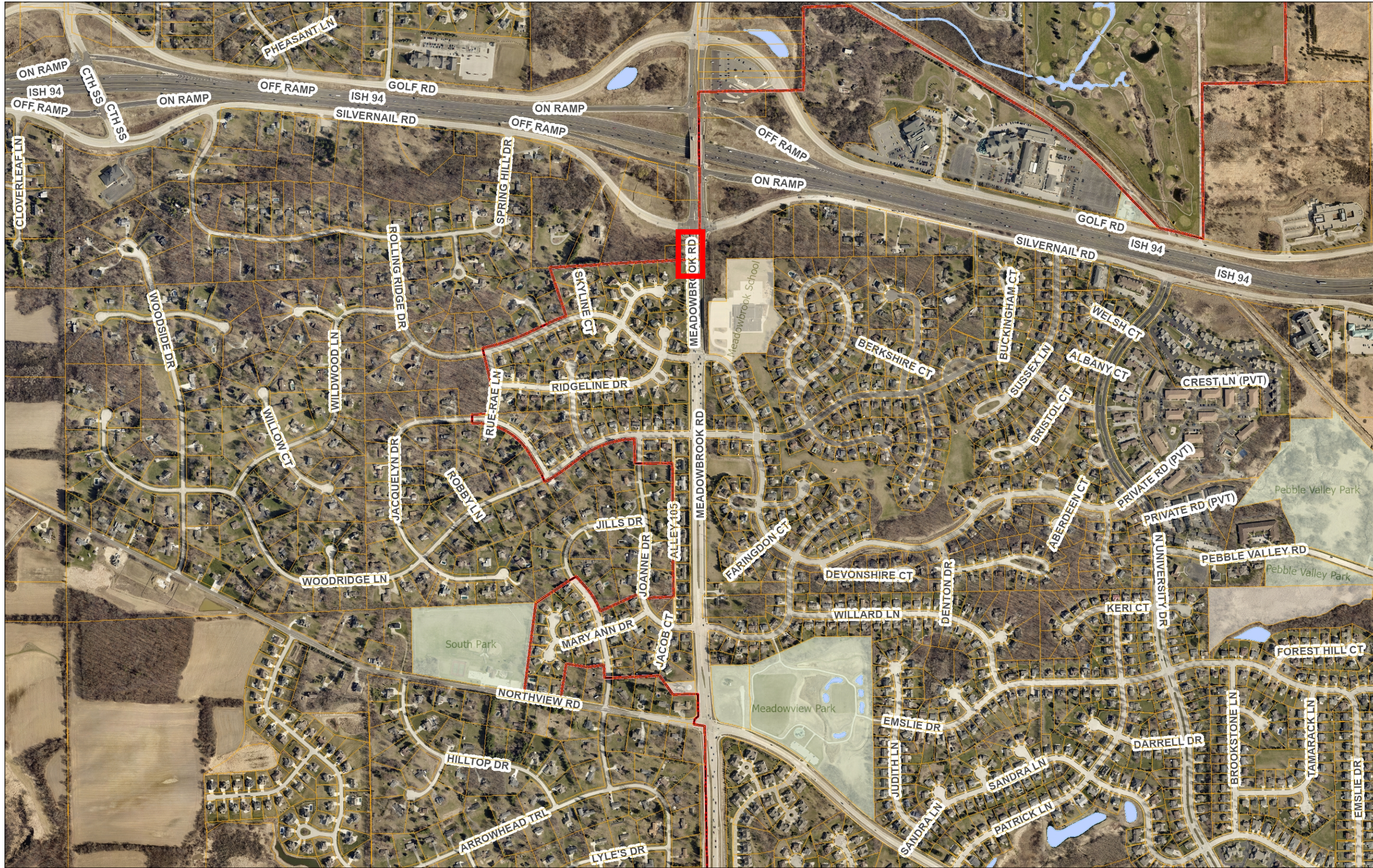
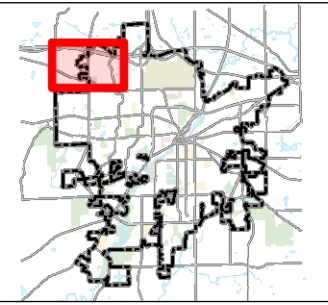
Suggested Motion:
 Recommend approval to install “Engine Brake Mufflers Required” sign for southbound STH 318 south of Silvernail Road.

Reviewed By:

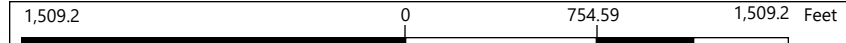
City Attorney Brian Running	Date Reviewed
Finance Director Joseph P. Ciarro	Date Reviewed
City Administrator Anthony W. Brown	Date Reviewed



City of Waukesha Property Map



- Legend**
- Parcels
 - Taxkey Labels
 - City Limits
 - Railroads
 - Water Bodies
 - Landmarks**
 - Cemetery
 - County
 - Municipal
 - Hospital
 - Parks
 - School
 - State/Federal



Print Date: 6/24/2026
City of Waukesha GIS

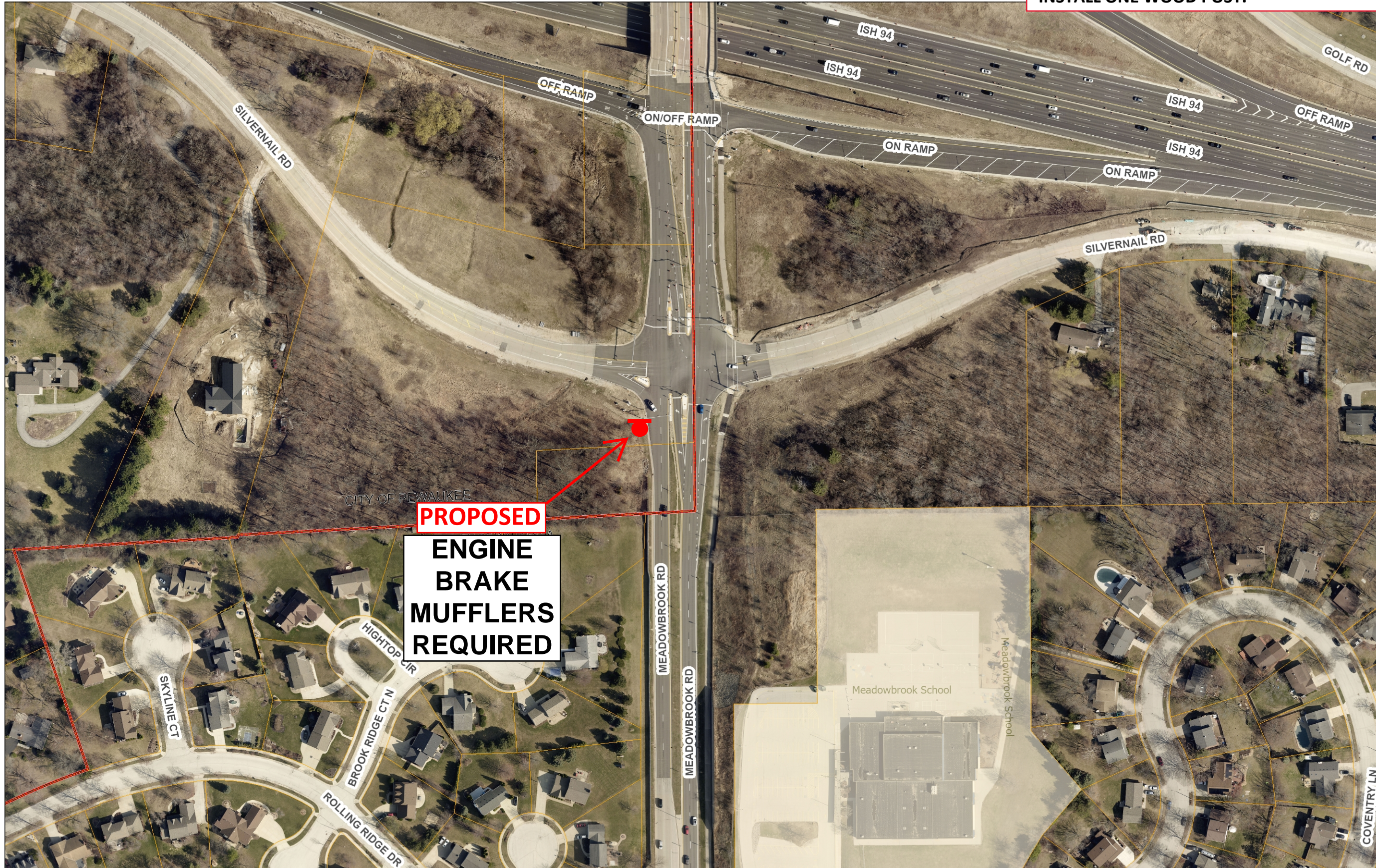
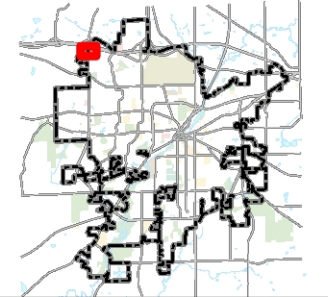
This map is a user generated static output from an Internet mapping site and is for reference only. The data found on this site is considered to be correct, but should not be used for engineering or survey applications without verifying the information from officially recorded sources.

Notes:

1: 9,055



- INSTALL ONE "ENGINE BRAKE MUFFLERS REQUIRED" SIGN.
- INSTALL ONE WOOD POST.



Legend

- Parcels
- Taxkey Labels
- City Limits
- Railroads
- Water Bodies
- Landmarks**
- Cemetery
- County
- Municipal
- Hospital
- Parks
- School
- State/Federal

1:2,000



333.3 0 166.67 333.3 Feet

This map is a user generated static output from an Internet mapping site and is for reference only. The data found on this site is considered to be correct, but should not be used for engineering or survey applications without verifying the information from officially recorded sources.

Notes:

EXHIBIT "A"

Forward View

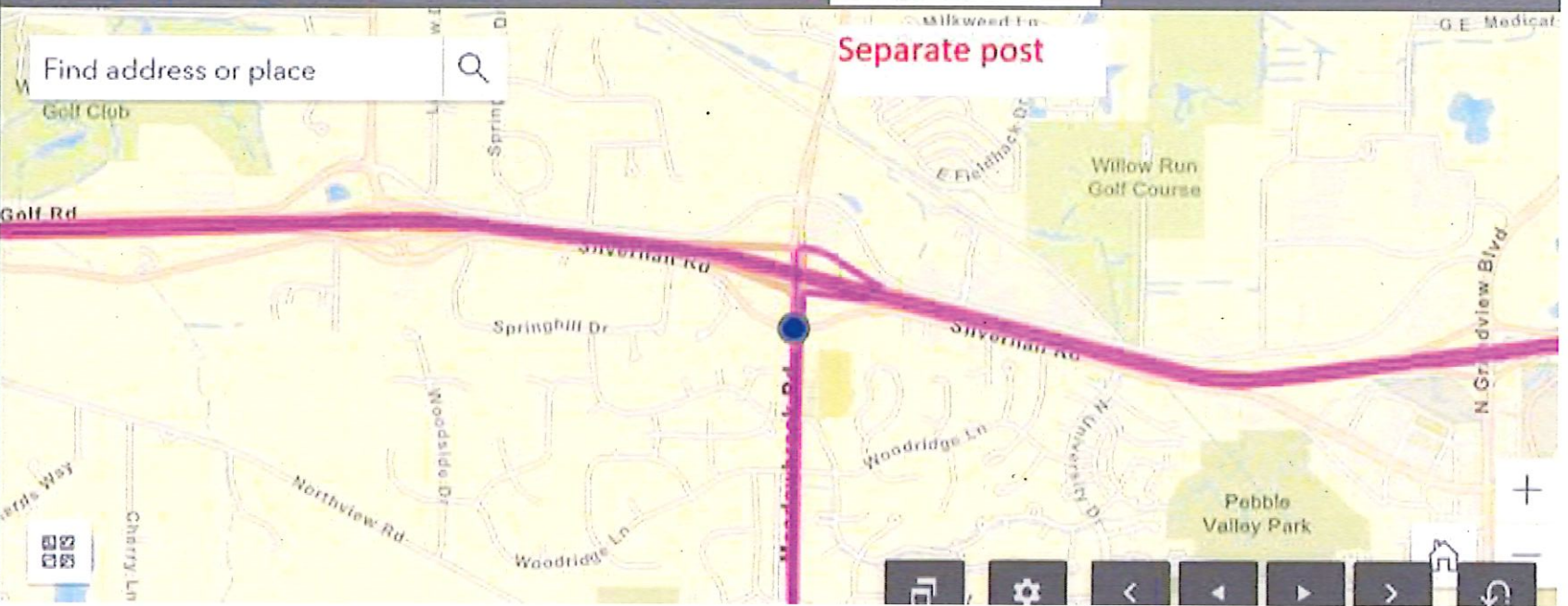


STH 318 SB south of Silvernail Road

furnish and install R10-64 ENGINE BRAKE MUFFLERS REQUIRED

RTE:	RGN:	CNTY:	DATE:	SN:	SURF_YR:	PTN CUM MILE:	COORDINATE:
318S	2	WAUKESHA	05/13/2025	421600	2024	0.382	43.047367, -88.285

Map



Find address or place

Separate post

EXHIBIT A

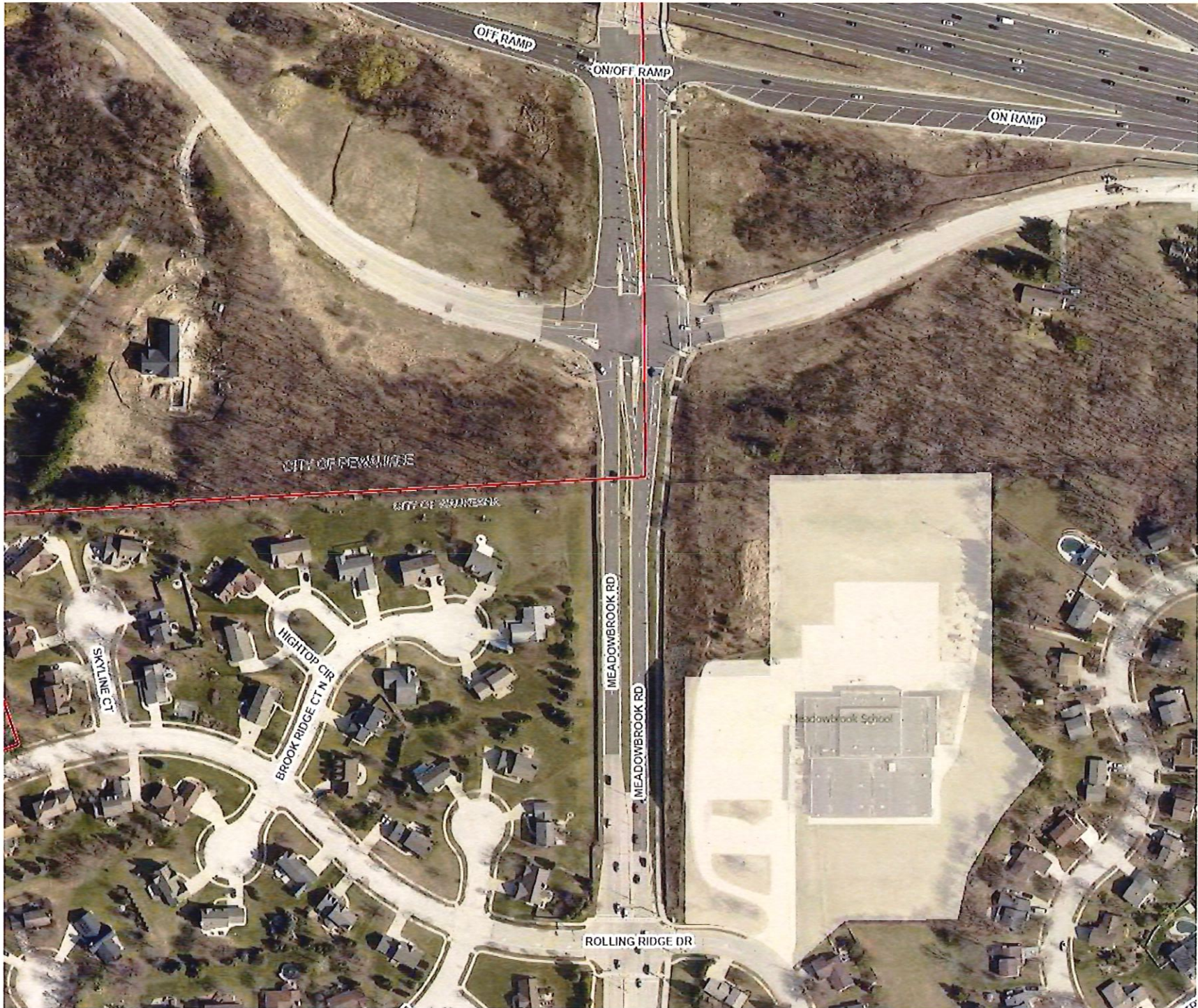
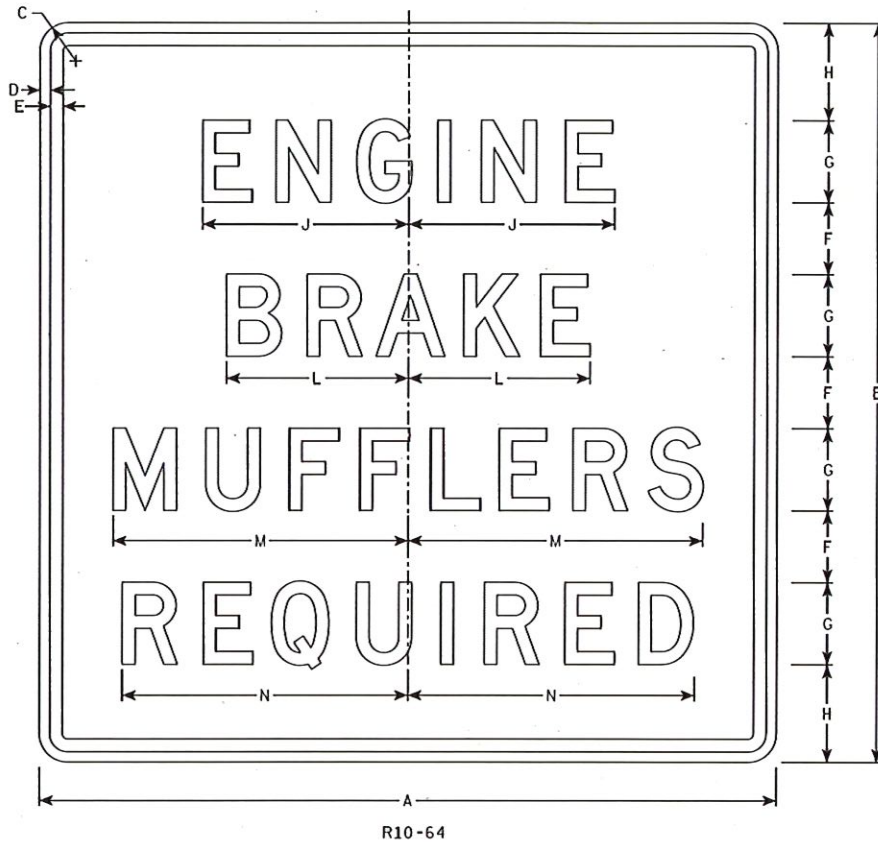


EXHIBIT A



NOTES

1. Signs are Type II - Type H Reflective
2. Color:
Background - White
Message - Black
3. Message Series - D See note 5
4. Corners shall be rounded when base material is metal

SIZE	A	B	C	D	E	F	G	H	I	J	K	L	M	N	O	P	Q	R	S	T	U	V	W	X	Y	Z	NO. OF SIGNS
1	36	36	2 1/4	1/2	5/8	3 1/2	4	4 3/4	2	10 1/8	3 1/2	8 7/8	14 3/8	14													9.0
2S	36	36	2 1/4	1/2	5/8	3 1/2	4	4 3/4	2	10 1/8	3 1/2	8 7/8	14 3/8	14													9.0
2M	36	36	2 1/4	1/2	5/8	3 1/2	4	4 3/4	2	10 1/8	3 1/2	8 7/8	14 3/8	14													9.0
3	42	42	1 7/8	1/2	5/8	4	5	5	3	12 5/8	4	11 1/8	18	17 3/8													12.25
4																											
5																											

STANDARD SIGN
R10-64

WISCONSIN DEPT OF TRANSPORTATION

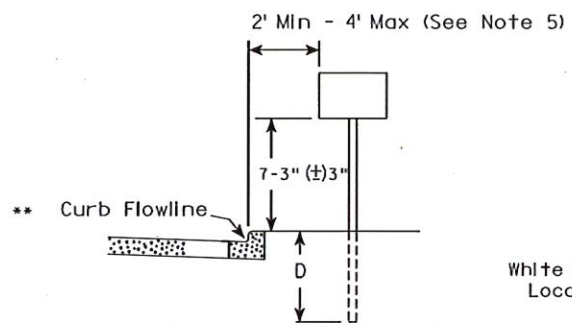
APPROVED *Matthew R Rauch*
For State Traffic Engineer

DATE 2/5/24 PLATE NO. R10-64.9

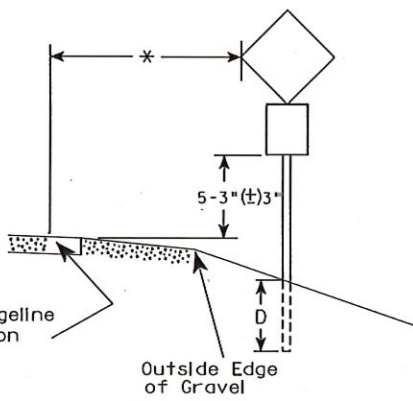
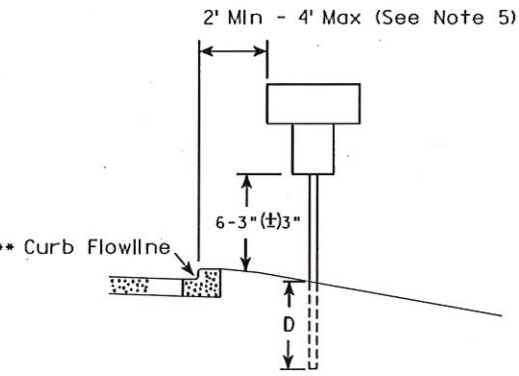
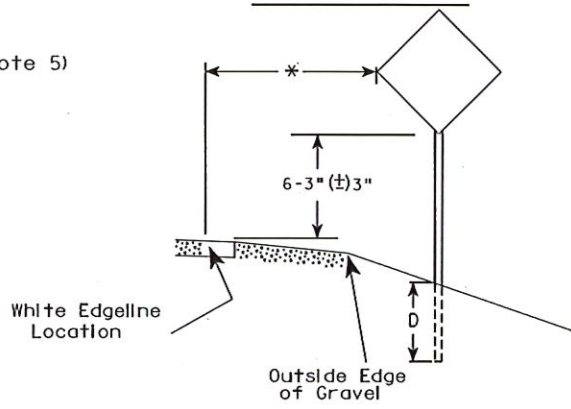
PROJECT NO:	HWY:	COUNTY:	SHEET NO: E
-------------	------	---------	--------------------

EXHIBIT A

URBAN AREA



RURAL AREA (See Note 2)



GENERAL NOTES

1. Signs wider than 4 feet or 20 sq.ft or larger, shall be mounted on multiple posts. Refer to plate A4-4.
2. If signs are mounted on or behind barrier wall, see A4-10 sign plate.
The Double Arrow sign (W12-1D) shall be mounted at a height of 2'-3" (±) 3". The Chevron sign (W1-8), Roundabout Chevron panel (R6-4B), Enhanced Reference Markers, Clearance Markers (W5-52), Mile Markers (D10 series), In Road Object Markers (W5-54) & End of Road Markers (W5-56) shall be mounted at a height of 4'-3" (±) 3".
3. For expressways and freeways, mounting height is 7'- 3" (±) 3" or 6'-3" (±) 3" depending upon existence of a sub-sign.
4. Minimum mounting height for signs mounted on traffic signal poles is 5'- 3" (±) 3".
5. Offset distance shall be consistent with existing signs or consistent throughout length of project.
6. Folding signs shall be mounted at a height of 5'-3" (±) 3" or as directed by the Engineer.

POST EMBEDMENT DEPTH

Area of Sign Installation (Sq. Ft.)	D (Min)
20 or Less	4'
Greater than 20	5'

** The existence of curb and gutter does not in itself mandate the vertical clearance illustrated. That height is typically measured where there is sidewalk adjacent to the roadway or parking is permitted. In the absence of sidewalk vertical clearance is measured from the top of the curb. Offset of signs is measured from the flow line.

* 6 feet from edge of a paved shoulder or 12 feet from the edge of pavement (edge line location) or 2 feet from outside edge of gravel, whichever is greater unless directed by project engineer.

TYPICAL INSTALLATION OF PERMANENT TYPE II SIGNS ON SINGLE POSTS

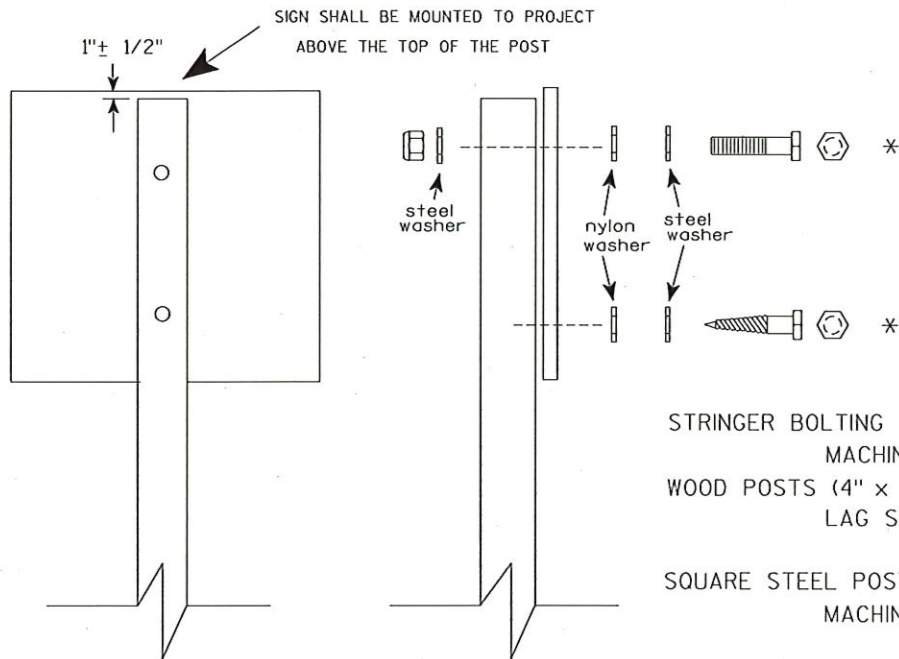
WISCONSIN DEPT OF TRANSPORTATION

APPROVED *Matthew R. Raub*
for State Traffic Engineer

DATE 12/6/23 PLATE NO. A4-3,23

PROJECT NO: _____ HWY: _____ COUNTY: _____ SHEET NO: **E**

EXHIBIT A



Nuts, bolts and lags used for mounting signs shall have hexagonal heads and shall be either :

- a. Hot dip galvanized in accordance with ASTM Designation: A 153, Class D, or SC 3
- b. Electro-galvanized in accordance with ASTM Designation : B 633, TYPE III, SC 3.

Threads on bolts and nuts shall be manufactured with sufficient allowance for the cadmium plate or galvanized coating to permit the nuts to run freely on the bolts.

STRINGER BOLTING TO ALUMINUM SIGNS (SEE SIGN PLATE A4-18)

MACHINE BOLTS - $\frac{5}{16}$ " X 1-3/4" Length w/ lock nuts

WOOD POSTS (4" x 6")

LAG SCREWS - $\frac{3}{8}$ " X 3" (NO STRINGERS ON BACK OF SIGN)
 $\frac{3}{8}$ " X 4" (STRINGERS ON BACK OF SIGN)

SQUARE STEEL POSTS (2" x 2")

MACHINE BOLTS - $\frac{3}{8}$ " X 3-1/4" Length w/ nuts (NO STRINGER ON BACK OF SIGN)
 $\frac{3}{8}$ " X 5" Length w/ nuts (STRINGERS ON BACK OF SIGN)

RIVETS - $\frac{3}{32}$ " (6605-9-6) BULB-TITE, TRI-FOLD, ALUMINUM BODY/MANDREL
 O.D. FLANGE .720-.765 INCH, GRIP RANGE .042-.375 INCH

WASHERS (ALL POSTS) -

1-1/4" O.D. X $\frac{3}{8}$ " I.D. X $\frac{1}{16}$ " STEEL
 1-1/4" O.D. X $\frac{3}{8}$ " I.D. X .080 NYLON

* Two different fastening systems are shown for illustration purposes. On any individual sign, either one or the other system shall be used. Actual number of fasteners per sign varies with the sign area, but normally there are two. For a single post installation, all signs greater than 9 sq. ft. require the use of 3 fasteners.

ATTACHMENT OF SIGNS TO POSTS

WISCONSIN DEPT OF TRANSPORTATION

APPROVED *Matthew R. Rauch*
 For State Traffic Engineer

DATE 4/1/2020 PLATE NO. A4-8.9

PROJECT NO:

FILE NAME : C:\CAEF11es\Projects\tr_stop\late\A48.DGN

PLOT DATE : 01-APRIL-2020

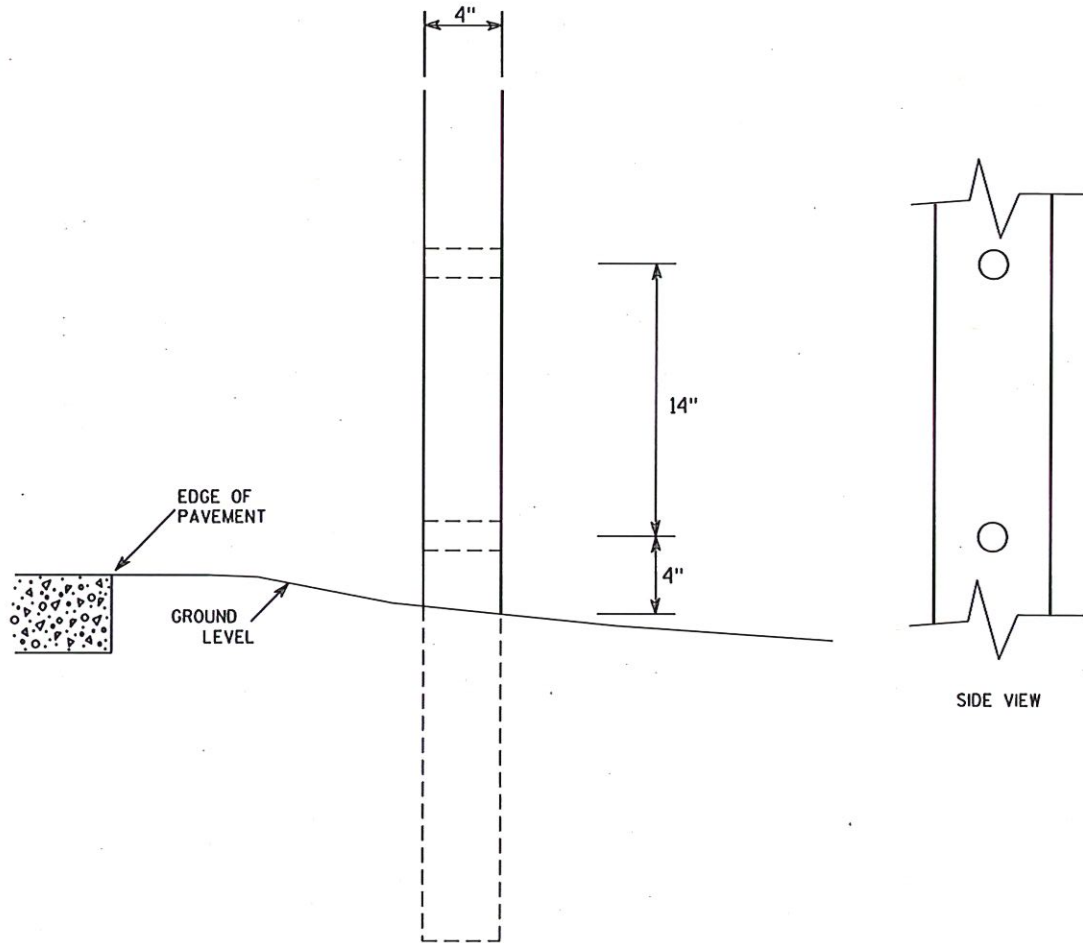
PLOT BY : dotc4c

SHEET NO:

E

WISDOT/CADD5 SHEET 42

EXHIBIT A



GENERAL NOTES

1. All 4 x 6 Wood Posts shall be modified by having two 1 1/2" diameter holes drilled perpendicular to the roadway centerline.

SIDE VIEW

4 X 6 WOOD POST MODIFICATIONS

WISCONSIN DEPT OF TRANSPORTATION

APPROVED

Chester J. Sprague
for State Traffic Engineer

DATE 3/27/97

PLATE NO. A4-11.2

PROJECT NO:

HWY:

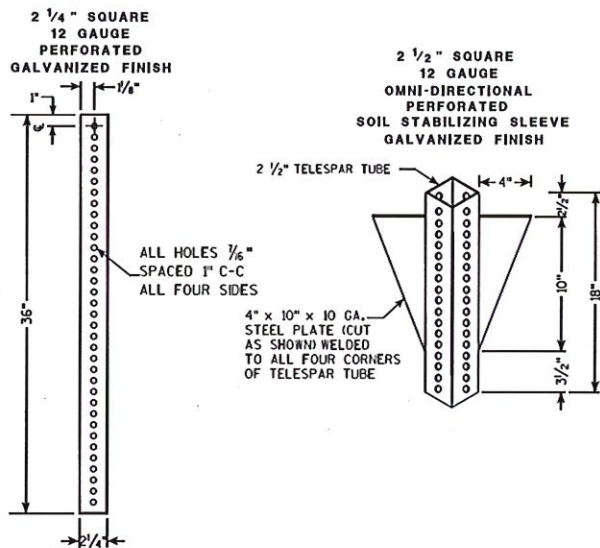
COUNTY:

SHEET NO:

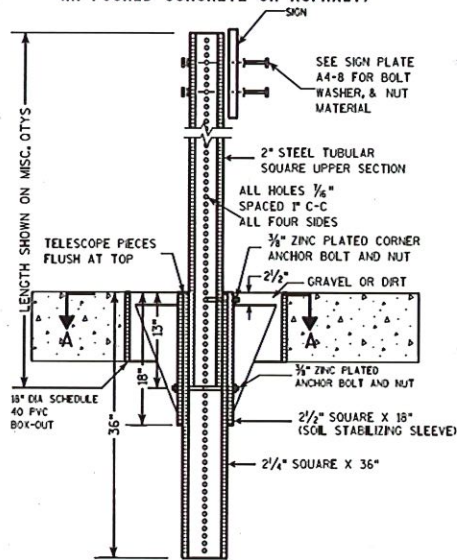
E

EXHIBIT "A"

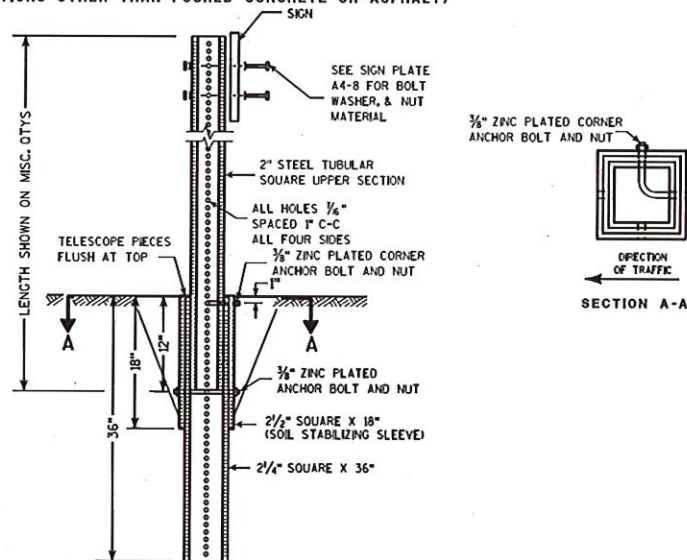
TELESCOPIC TUBING ANCHORS
TWO PIECE SYSTEM



DETAIL OF TUBULAR STEEL SIGN POST
(IN POURED CONCRETE OR ASPHALT)



DETAIL OF TUBULAR STEEL SIGN POST
(IN LOCATIONS OTHER THAN POURED CONCRETE OR ASPHALT)



Area of Sign Installation (Sq. Ft.)	Number of Required Posts
9 or less	1
Greater than 9 less than or equal to 18	2
Greater than 18 less than or equal to 27	3

Signs wider than 3 feet or larger than 9 sq. ft shall be mounted on multiple posts (see above table).

TUBULAR STEEL
SIGN POST
A4-9

WISCONSIN DEPT OF TRANSPORTATION

APPROVED *Matthew R. Rauch*
For State Traffic Engineer

DATE 2/05/15 PLATE NO. A4-9.9