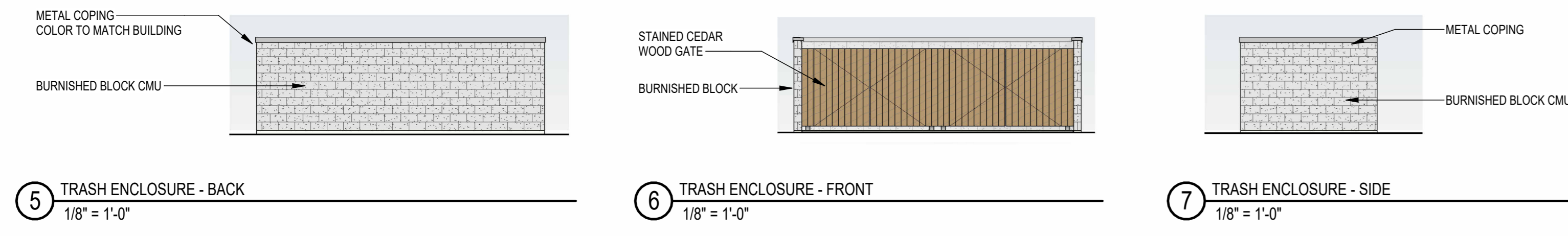
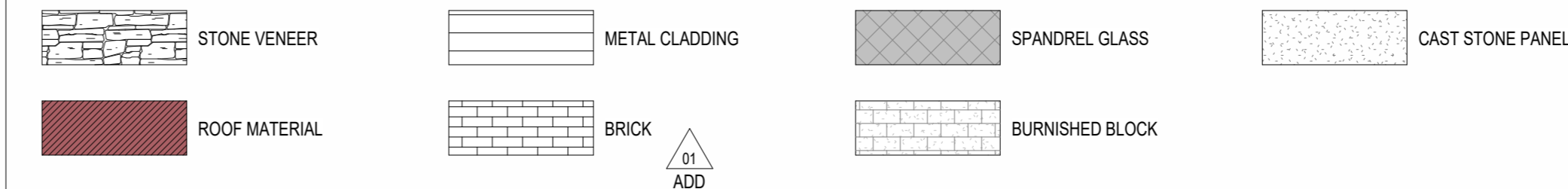


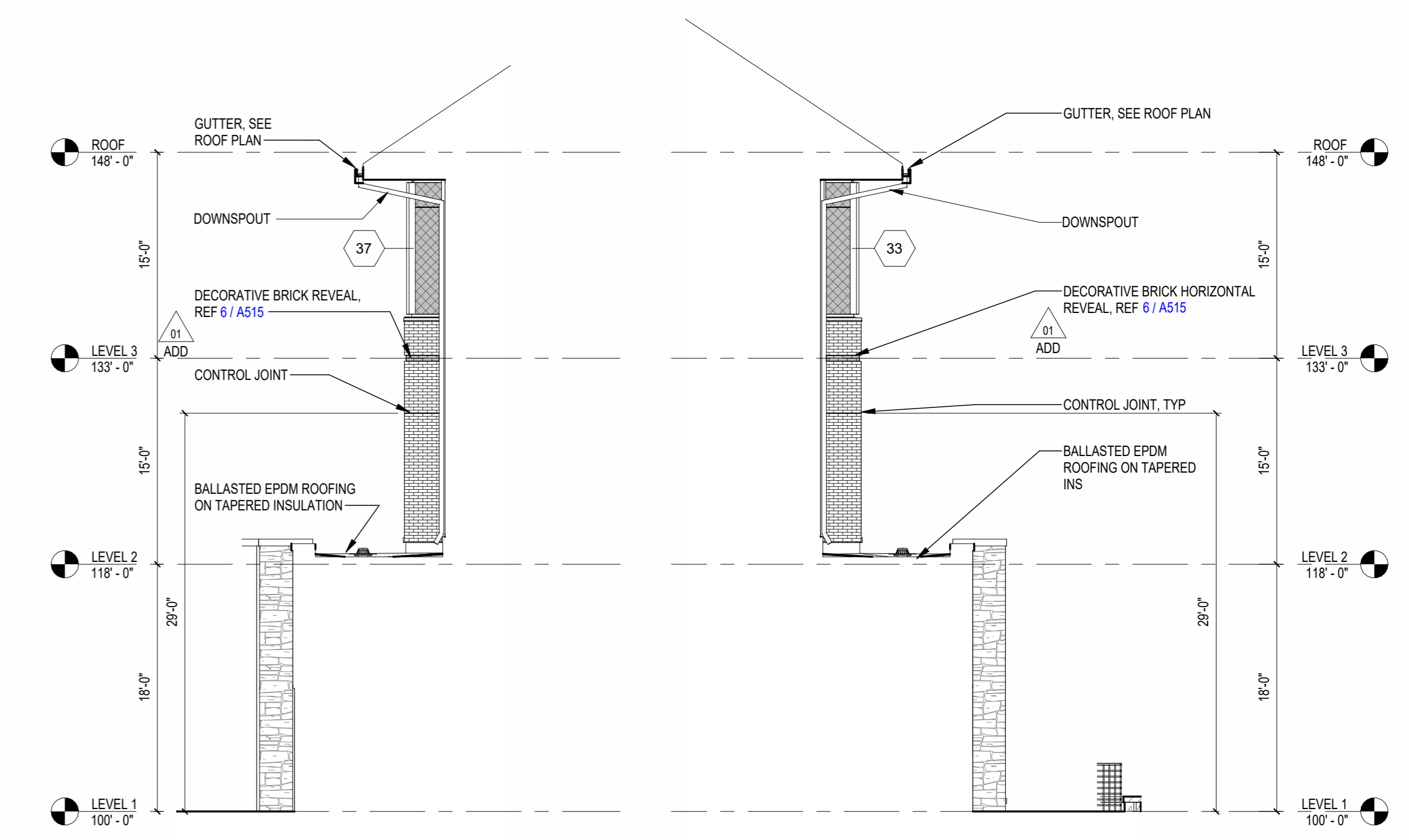
EXTERIOR ELEVATION GENERAL NOTES:

1. METAL SURFACES EXPOSED TO VIEW (INCLUDING MISCELLANEOUS METALS, PIPING, MECHANICAL EQUIPMENT, LADDERS, STAIRS, RAILING, COLUMNS, PLATFORMS, ETC.) SHALL BE PAINTED, U.N.O.
2. CONTROL JOINTS IN CMU BACKUP TO BE OFFSET FROM CONTROL JOINTS IN MASONRY/STONE VENEER. CONTROL JOINTS AT CMU BACKUP MAXIMUM 2' SPACING.
3. PROVIDE CONTROL JOINTS AT INSIDE CORNERS OF BRICK AND STONE VENEERS.
4. SEE WINDOW ELEVATIONS FOR FULL EXTENT OF WINDOW DETAILS, WINDOW FRAME TYPE AND GLASS TYPES.
5. MECHANICAL PENETRATIONS ARE GENERAL REPRESENTATIONS. SEE LOUVER ELEVATIONS FOR LOUVER TYPES. SEE MEP DRAWINGS FOR PENETRATIONS, BLANK OFF'S AND ANY ADDITIONAL INFORMATION.

MATERIAL IDENTIFICATION

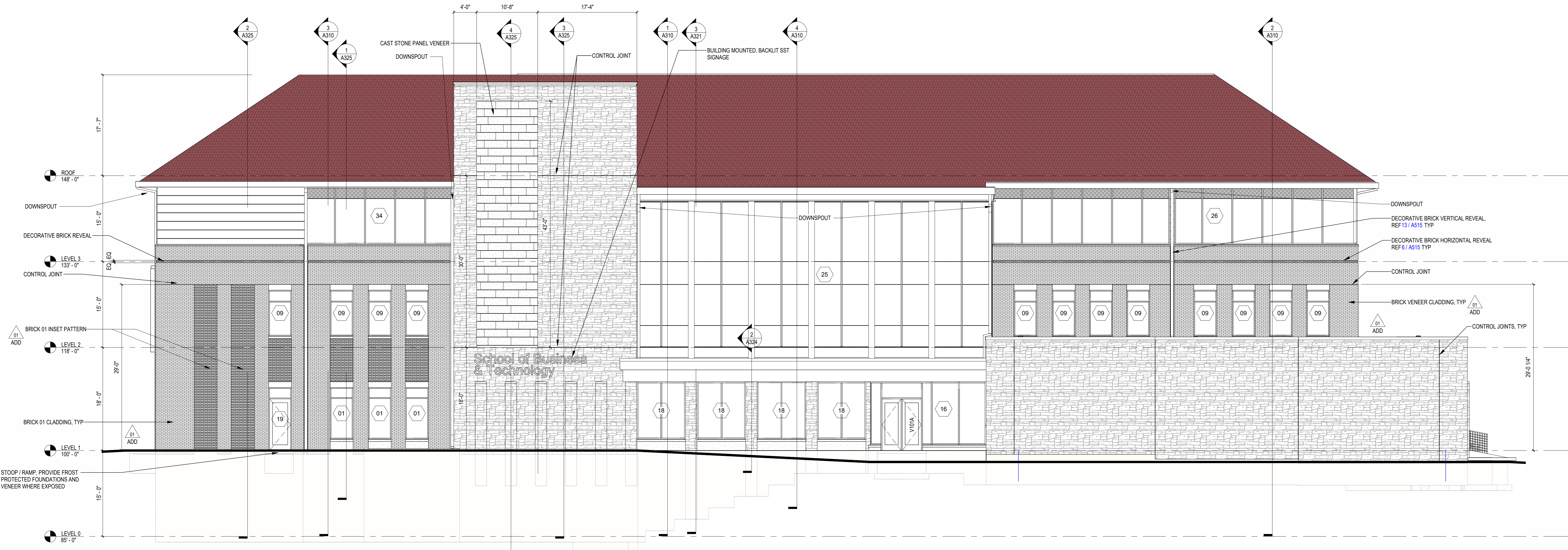


2 EXTERIOR ELEVATION - NORTH
1/8" = 1'-0"



3 EXTERIOR ELEVATION - PARTIAL BOH NORTH WEST
1/8" = 1'-0"

4 EXTERIOR ELEVATION - PARTIAL BOH NORTH EAST
1/8" = 1'-0"



1 EXTERIOR ELEVATION - EAST
1/8" = 1'-0"

Revisions
12/3/25 ADDENDUM #01

BID DOCUMENTS

SCOPE DOCUMENTS

Drawing Date
08.11.2025

SULLIVAN SCHOOL OF BUSINESS & TECHNOLOGY

245 N. Barstow St.
Waukesha, WI 53186

Project No. CARROLL UNIVERSITY
221071.00

EXTERIOR ELEVATIONS - NORTH & EAST

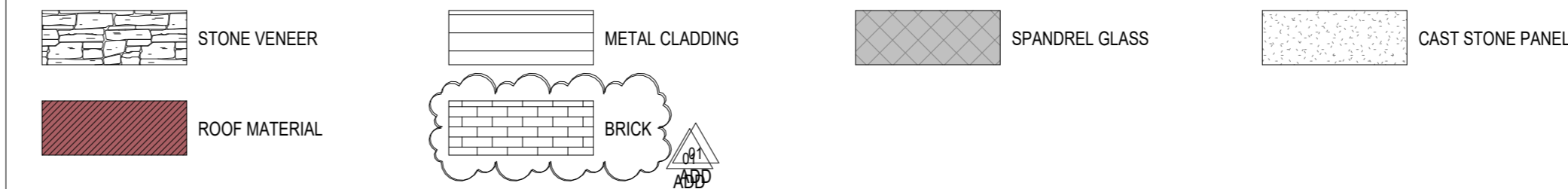
Copyright © 2024 Kahler Slater, Inc. All rights reserved.
750 N Water Street, Suite 1700, Milwaukee, Wisconsin 53202
Telephone 414.272.2000 Fax 414.272.2001
104 Shockoe Stg, Richmond, Virginia 23219
Telephone 804.787.2500
722 Williamson Street, Madison, Wisconsin 53703
Telephone 608.263.6300 Fax 608.263.6317
150 N Wacker Drive, Suite 1700, Chicago, Illinois 60606
Telephone 312.789.4516

Sheet No.
A200

EXTERIOR ELEVATION GENERAL NOTES:

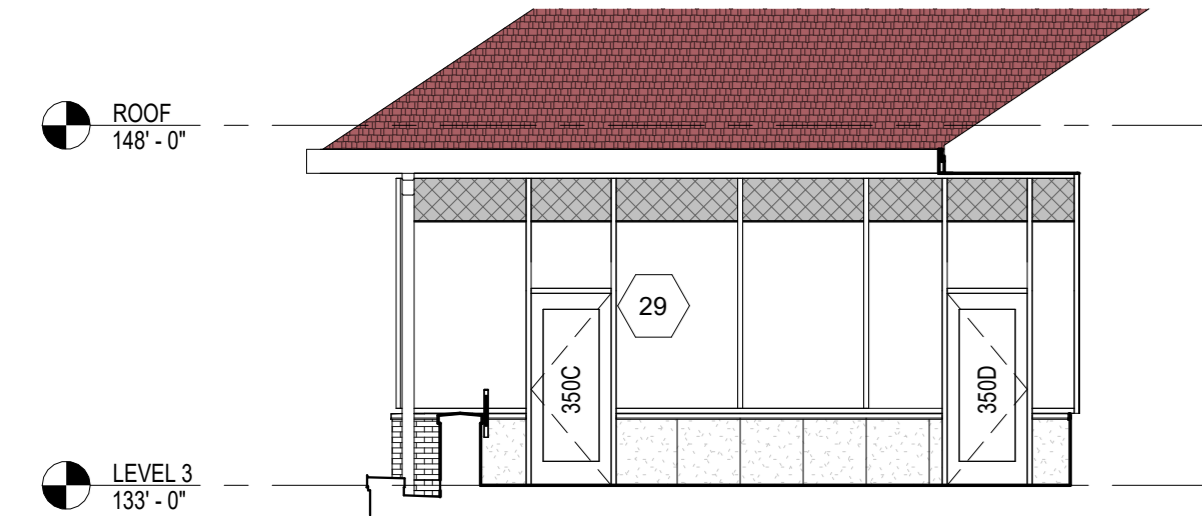
- METAL SURFACES EXPOSED TO VIEW (INCLUDING MISCELLANEOUS METALS, PIPING, MECHANICAL EQUIPMENT, LADDERS, STAIRS, RAILING, COLUMNS, PLATFORMS, ETC.) SHALL BE PAINTED, U.N.O.
- CONTROL JOINTS IN CMU BACKUP TO BE OFFSET FROM CONTROL JOINTS IN MASONRY/STONE VENEER. CONTROL JOINTS AT CMU BACKUP MAXIMUM 2' SPACING.
- PROVIDE CONTROL JOINTS AT INSIDE CORNERS OF BRICK AND STONE VENEERS.
- SEE WINDOW ELEVATIONS FOR FULL EXTENT OF WINDOW DETAILS, WINDOW FRAME TYPE AND GLASS TYPES.
- MECHANICAL PENETRATIONS ARE GENERAL REPRESENTATIONS. SEE LOUVER ELEVATIONS FOR LOUVER TYPES. SEE MEP DRAWINGS FOR PENETRATIONS, BLANK OFF'S AND ANY ADDITIONAL INFORMATION.

MATERIAL IDENTIFICATION

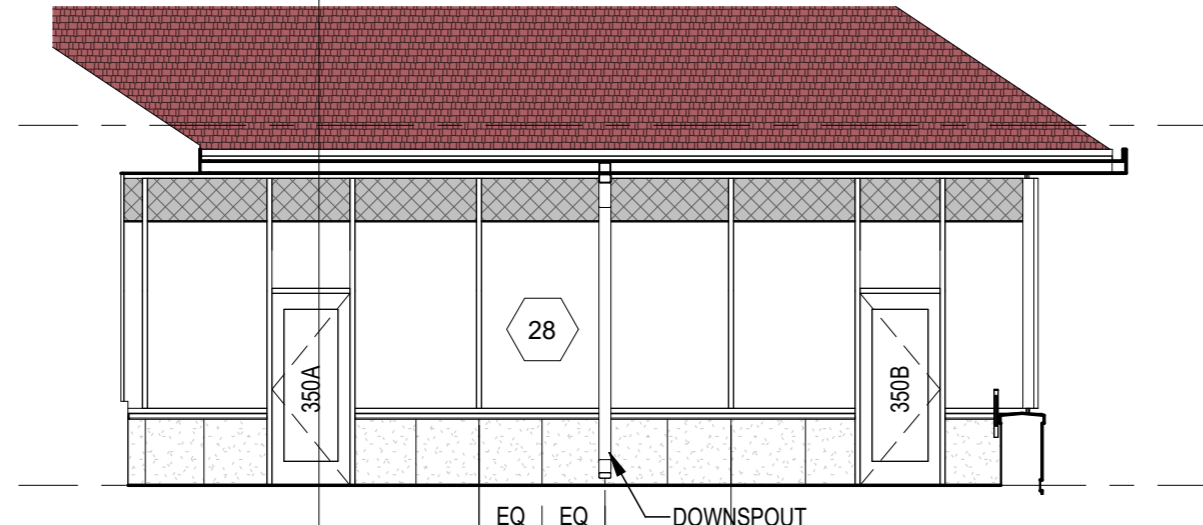


7 EXTERIOR ELEVATION - EAST CHIMNEY - EAST WALL
1/8" = 1'-0"

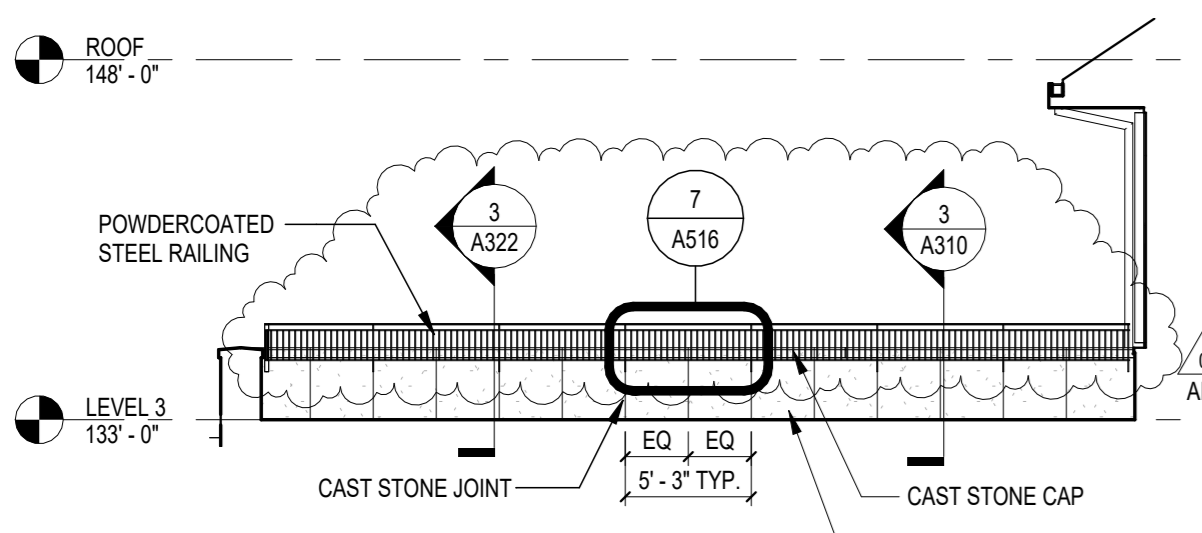
8 EXTERIOR ELEVATION - WEST CHIMNEY - EAST WALL
1/8" = 1'-0"



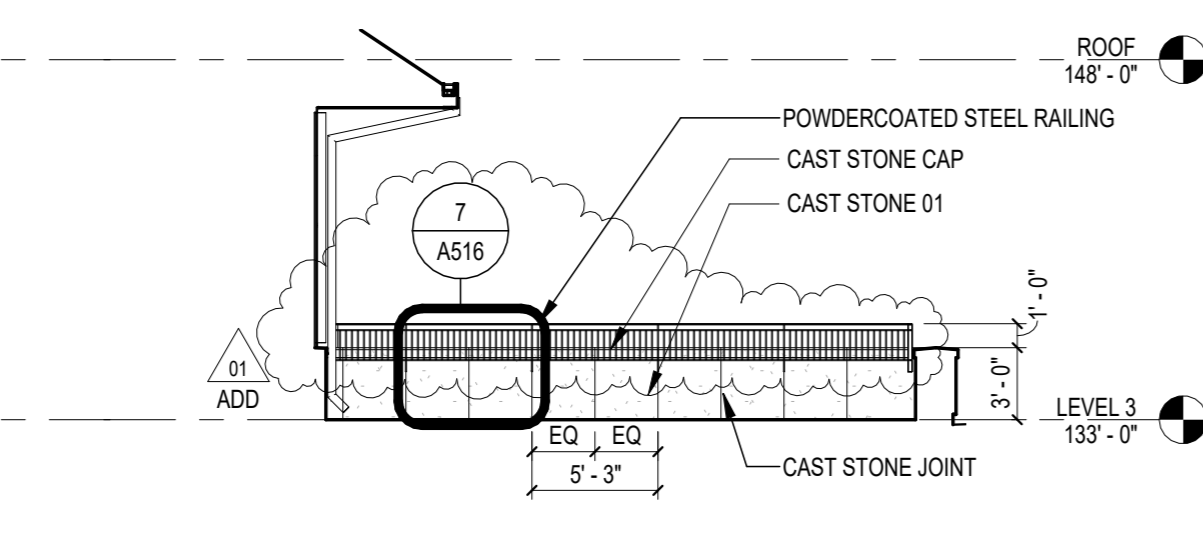
6 EXTERIOR ELEVATION - OUTDOOR CLASSROOM - NORTH WALL
1/8" = 1'-0"



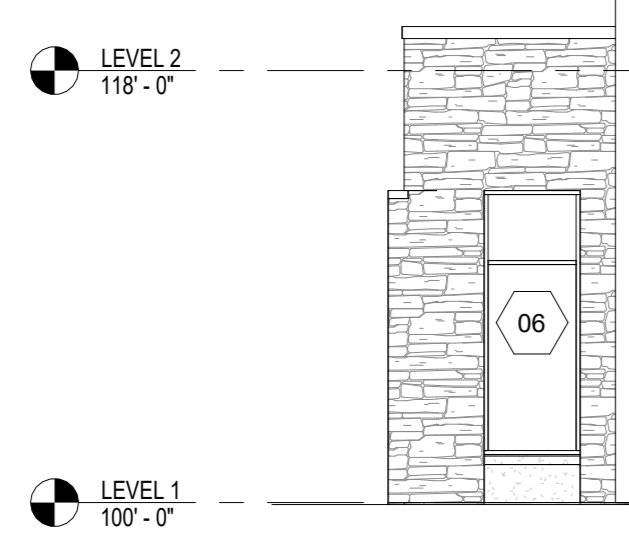
5 EXTERIOR ELEVATION - OUTDOOR CLASSROOM - EAST WALL
1/8" = 1'-0"



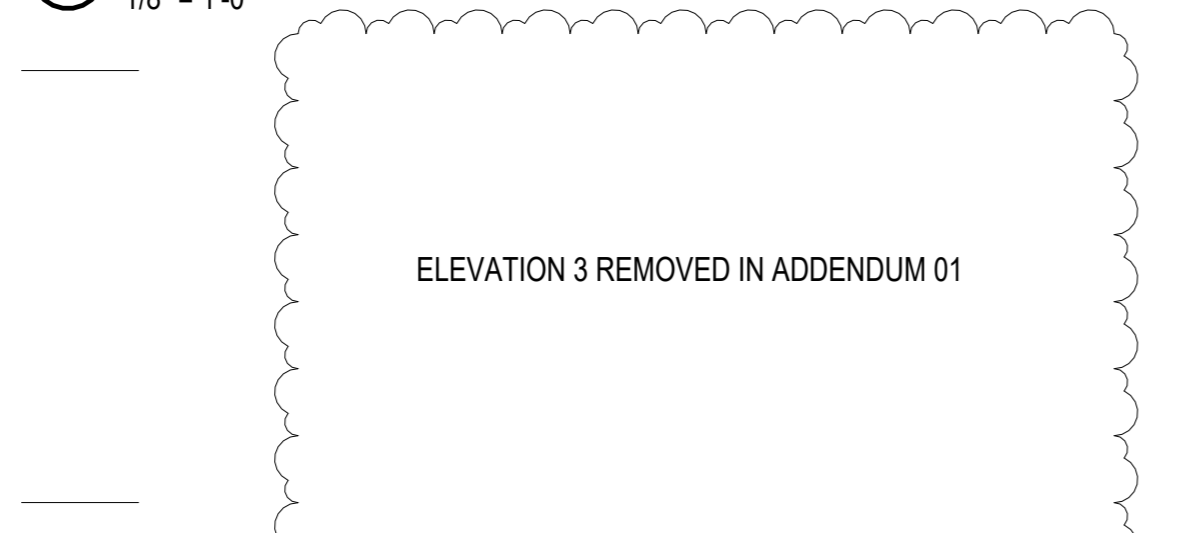
10 ROOF TERRACE - WEST ELEVATION
1/8" = 1'-0"



9 ROOF TERRACE - SOUTH ELEVATION
1/8" = 1'-0"



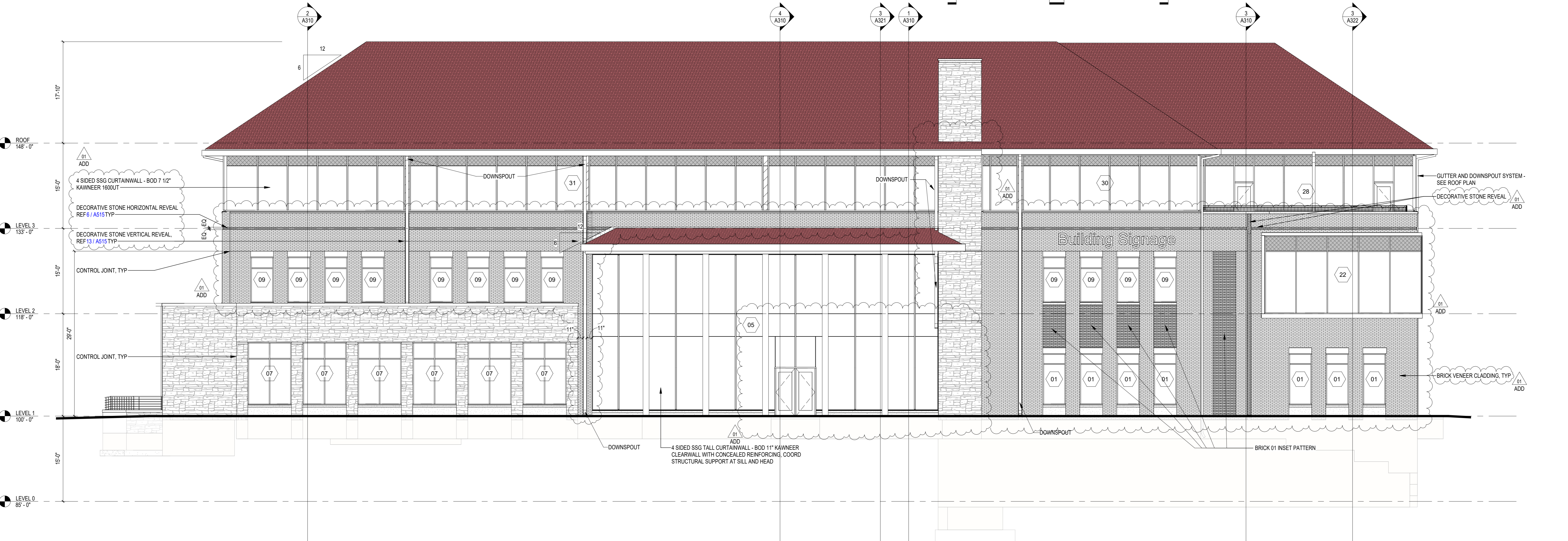
4 EXTERIOR ELEVATION - LARGE FLAT - SOUTH ELEVATION
1/8" = 1'-0"



3 EXTERIOR ELEVATION - SOUTH
1/8" = 1'-0"



2 EXTERIOR ELEVATION - SOUTH
1/8" = 1'-0"



1 EXTERIOR ELEVATION - WEST
1/8" = 1'-0"

Revisions
12/3/25 ADDENDUM #01

BID DOCUMENTS

SCOPE DOCUMENTS

Drawing Date
08.11.2025

SULLIVAN SCHOOL OF BUSINESS & TECHNOLOGY

245 N. Barstow St.
Waukesha, WI 53186

Project No. CARROLL UNIVERSITY
221071.00

Sheet Title
EXTERIOR ELEVATIONS - SOUTH & WEST

Copyright © 2024 Kahler Slater, Inc. All rights reserved.
790 N Water Street, Suite 1700, Milwaukee, Wisconsin 53202
Telephone 414.272.2000 Fax 414.272.2001
104 Shockoe Stg, Richmond, Virginia 23219
Telephone 804.787.2500
722 Williamson Street, Madison, Wisconsin 53703
Telephone 608.263.6300 Fax 608.263.6317
150 N Wacker Drive, Suite 1700, Chicago, Illinois 60606
Telephone 312.789.4516

Sheet No.
A201



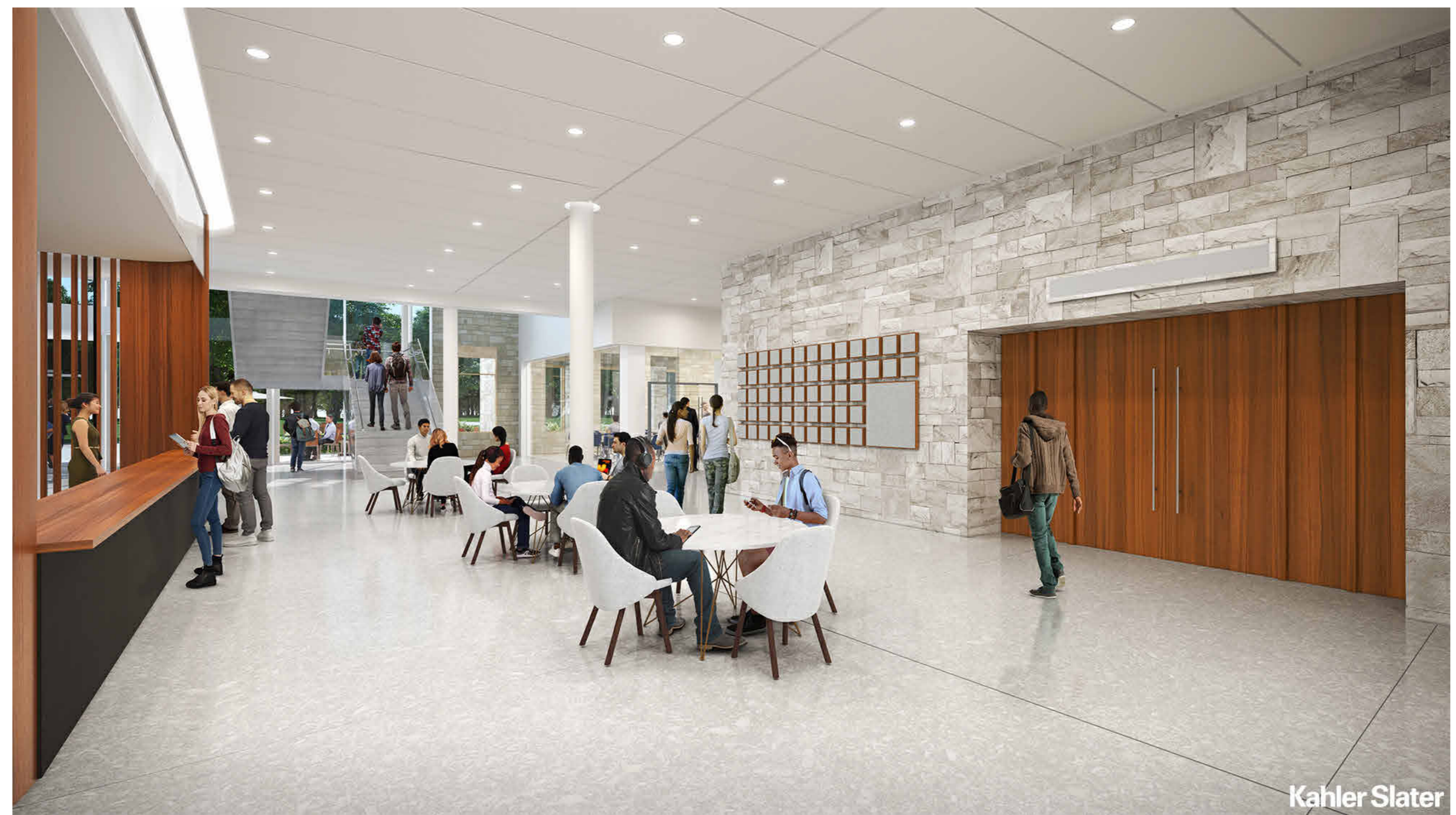
VIEW FROM BARSTOW STREET



CENTRAL ATRIUM SPACE



EAST FACADE AND ENTRY



FIRST FLOOR COMMON SPACE

NOT FOR CONSTRUCTION

Revisions

PRELIMINARY PLAN REVIEW

SCOPE DOCUMENTS

Drawing Date
08.11.2025

SULLIVAN SCHOOL OF BUSINESS & TECHNOLOGY

245 N. Barstow St.
Waukesha, WI 53186

Project No. CARROLL UNIVERSITY
221071.00

Sheet Title
REFERENCE RENDERINGS

Copyright © 2024 Kahler Slater, Inc. All rights reserved.
 750 N Water Street, Suite 1700, Milwaukee, Wisconsin 53202
 Telephone 414.272.2000 Fax 414.272.2001
 104 Shocksie Stg, Richmond, Virginia 23219
 Telephone 804.787.2500
 722 Williamson Street, Madison, Wisconsin 53703
 Telephone 608.283.6300 Fax 608.283.6317
 150 N Wacker Drive, Suite 1700, Chicago, Illinois 60606
 Telephone 312.789.4516

Sheet No.
A901

NOTE: RENDERINGS WERE COMPLETED PRIOR TO SCHEMATIC DESIGN AND MAY VARY FROM CURRENT DESIGN CONCEPT. PLEASE REFERENCE ONLY FOR QUALITY, SPATIAL AND FINISH DESIGN INTENT ONLY. SEE G000 FOR PRIMARY STREET VIEW.