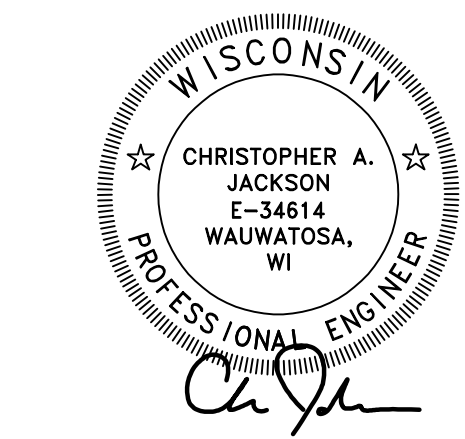


(100' WIDE PUBLIC RIGHT OF WAY)

THE WEST LINE OF THE NORTHWEST 1/4 OF SECTION 21-7-20



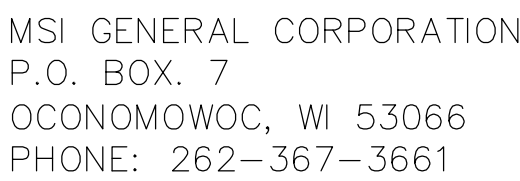
SCALE IN FEET

10' 0 10

Call 811 or (800) 242-8511
Milwaukee Area (262) 432-7910
Hearing Impaired TDD (800) 542-2289
www.DiggersHotline.com

- ## LEGEND

PROPERTY LINE
RIGHT-OF-WAY
EASEMENT LINE
DEMOLITION – REMOVAL OF ONSITE
PAVEMENT MARKING
DEMOLITION – REMOVAL OF ASPHALT SURFACES
DEMOLITION – REMOVAL OF CONCRETE SURFACE
DEMOLITION – REMOVAL OF LANDSCAPE BEDDING
TREE REMOVAL
PROTECT EXISTING TREE



SINGLE SOURCE RESPONSIBILITY™

Preliminary Set	05/09/2025
Budget Set	06/03/2025
Proposal Set	06/30/2025
Permit Set	
Construction Set	

REVISIONS:



MILWAUKEE REGIONAL OFFICE
W238 N1610 BUSSE ROAD, SUITE 100
WAUKESHA, WISCONSIN 53188
P. 262.513.0666
JSD PROJ. NO.: 25-15287
JSD PROJ. MGR.: CAJ

PROJECT NAME
EMERGENCY 24
STREET ADDRESS
2021 SPRINGDALE RD
CITY/ STATE / ZIP
WAUKESHA, WI

ALL WORK TO BE COMPLETED AS SHOWN, AND IN
ACCORDANCE WITH THE LATEST EDITION OF THE
MSI GENERAL MASTER SPECIFICATION

Architect: Engineer: Reviewed By:

Sheet Title:

SITE DEMOLITION PLAN

Sheet Number

C1.0

Project Number:

P13689

MANAGERS

ENGINEERS

CONTRACTORS

ARCHITECTS

